



Tygerberg Doctoral Office

Your Proactive Research·Degree Partner

Tyg-PhD@sun.ac.za | 021 938 9813

Throughout this brochure, teal-coloured text is clickable



Stellenbosch

UNIVERSITY
IYUNIVESITHI
UNIVERSITEIT

forward together
sonke siya phambili
saam vorentoe



Research & Internationalisation Development & Support (RIDS) · Goodie Bags, 2024

Single click

Resources

For 100% research master's students

[Welcome](#) | [Contacts for queries](#) | [Guidelines](#)

For doctoral students

[Welcome](#) | [Campus](#) | [TPSC](#) | [Student Affairs](#) | [WhatsApp group](#)
[Guidelines](#) | [Proposal review](#) | [Ethics Process](#) | [Bursaries](#) | [Funding calls](#)
[Project planning](#) | [Writing](#) | [Postgraduate Office](#) | [Intention to submit](#)

For PhD supervisors

[Supervisor training options](#) | [MoU](#) | [Form A3 review checklist](#)
[Examiner nomination form](#) | [Dissertation release form](#)
[Central analytical facilities](#)

For Postgraduate Programme Committees (PPCs): [About the CPR](#)

For Postdocs: [Campus facilities](#) | [WhatsApp group](#)



Get Further Help

PhD	Who can help you best?	Read more
All PhD Support	Tygerberg Doctoral Office	» Click here «
Application	SU Central Admissions	» Click here «
Registration	FMHS Registrar's division	» Click here «
Proposal review	Academic department & Tygerberg Doctoral Office	» Click here «
Ethics clearance	Ethics committees	» Click here «
Bursaries and loans	SU Bursary Office	» Click here «
Funding	Research Capacity Development	» Click here «
Writing	FMHS Community of Practice & language professionals	» Click here «
Tracking progress	Candidate, Supervisor & Tygerberg Doctoral Office	» Click here «
Examination	Tygerberg Doctoral Office	» Click here «
Graduation	SU Registrar's division	» Click here «
Consolidoc / Postdoc	SU Postdoc Office	» Click here «
FAQ Contacts	FAQ Contacts	» Click here «



Meet the team



Ms Brigitta Kepkey

Coordinator: PhD programme support

- Students
- Supervisors

Academic environment liaison

Postgraduate Programme Committee liaison

Tyg-PhD@sun.ac.za



Dr Chanelle Windvogel

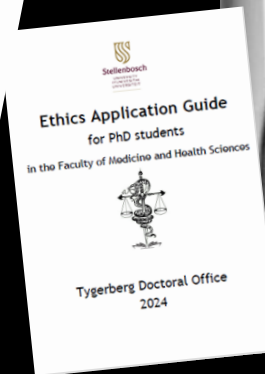
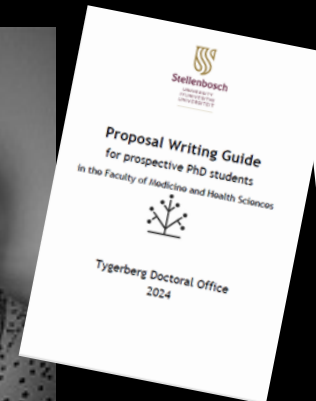
(Parttime)

Master's by thesis examination officer

Predocctoral Short Course support

Ad hoc projects

Tyg-Thesis@sun.ac.za



Dr Liela Groenewald

Head: Tygerberg Doctoral Office

Secretary: FMHS Committee for Postgraduate Research (CPR)

Convenor: SU Predocctoral Short Course in Medicine and Health Sciences



Connect with us

Tygerberg Doctoral Office

Powering FMHS PhDs from proposal to success



Walk-ins Welcome



Mondays, Wednesdays & Fridays 9AM to 12 noon

Room 1073, side passage, 1st floor, Clinical Building



Find us online

www.sun.ac.za/fmhsdoctoraloffice

where you may also access the updated FMHS [Doctoral Guidelines](#)

Mail or ring us



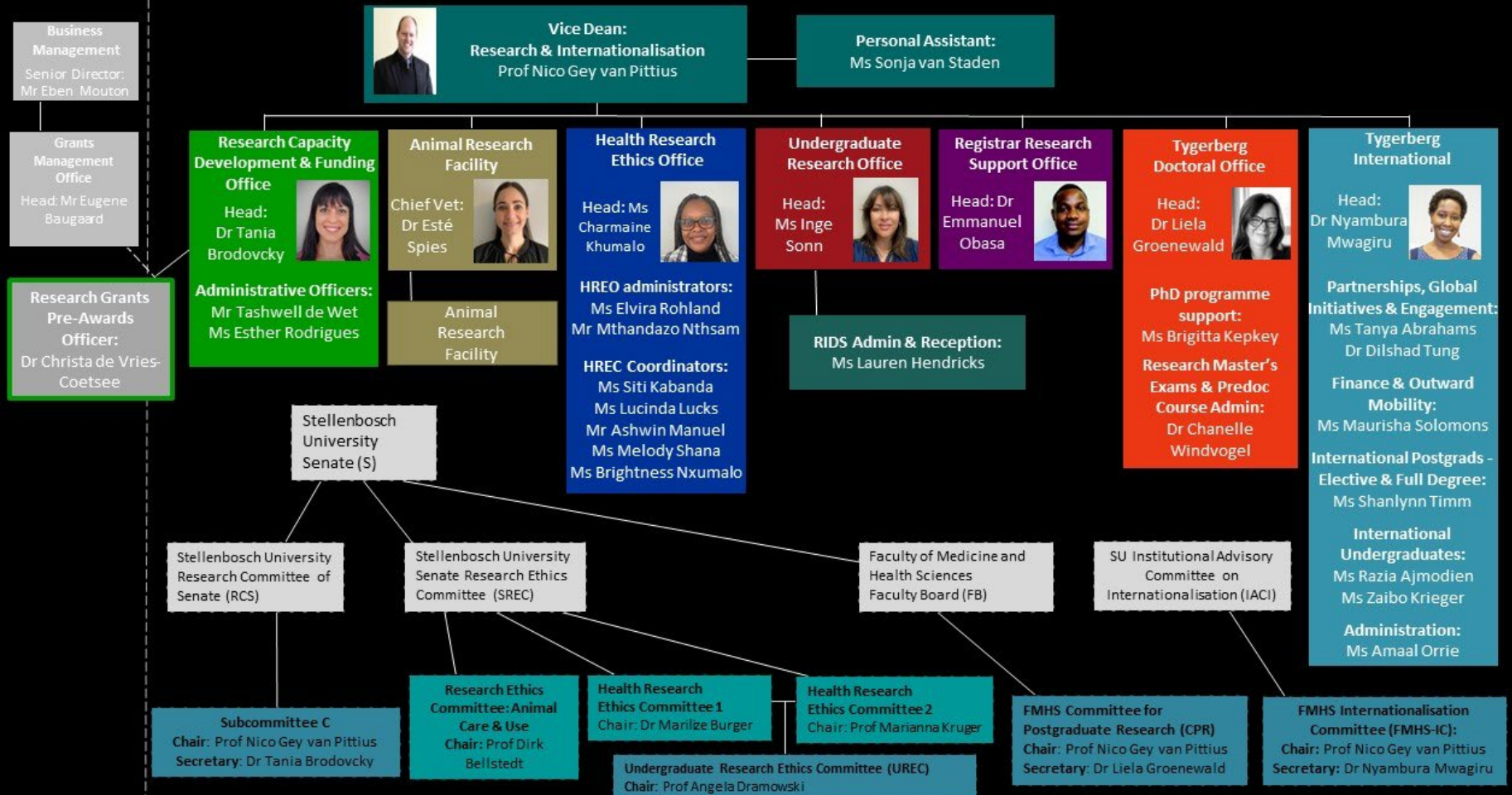
✉ Tyg-PhD@sun.ac.za | ☎ 021 938 9813 | All PhD enquiries

 PhD application	 Fees & Funding	 Registration	 PG Accommodation
 Year 1 Milestones	 FMHS Doctoral Guidelines	 Supervision	 Student experience
 Proposal Review	 Ethics process	 Research & Writing	 Courses
 PhD Examination	 Outputs	 Graduation ceremonies	 FAQ Contacts



FMHS RIDS Offices

Research & Internationalisation Development & Support



Gallery



Professor Usuf Chikte lectures in the SU
Predoctoral Short Course in Medicine and Health Sciences



PhD (Internal Medicine) candidate Ms Megan Rajah could commence with research as soon as she had received [ethics approval](#).



Dr Anusha Lachman, PhD (Psychiatry) at her SU / FMHS [graduation ceremony](#) at Coetzenburg.

