



UNIVERSITEIT•STELLENBOSCH•UNIVERSITY
jou kennisvenoot • your knowledge partner

**'n Nuwe Era :
Fasiliteite & Mobiliteit vir 'n
21ste Eeuse Universiteit**

***A New Era:
Facilities & Mobility for a
21st Century University***

2012/02/27

Prof H Russel Botman

Rektor en Visekanselier / Rector and Vice-Chancellor

Volhoubaarheid
Sustainability 



ONS/OUR STELLENBOSCH

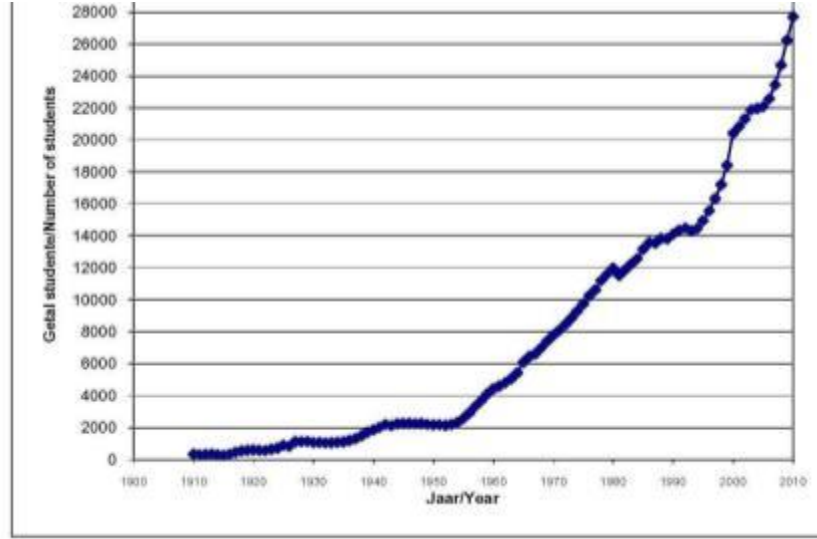
Universiteitsdorp / *University Town*



© FOTO DEUR ERHARDT THIEL



ONGEKENDE GROEI / UNPRECEDENTED GROWTH





Eie vervoer:

- 82% van personeel
- 43% van studente

Parking shortage:

Bays: 7 200

@ ea. R25 000

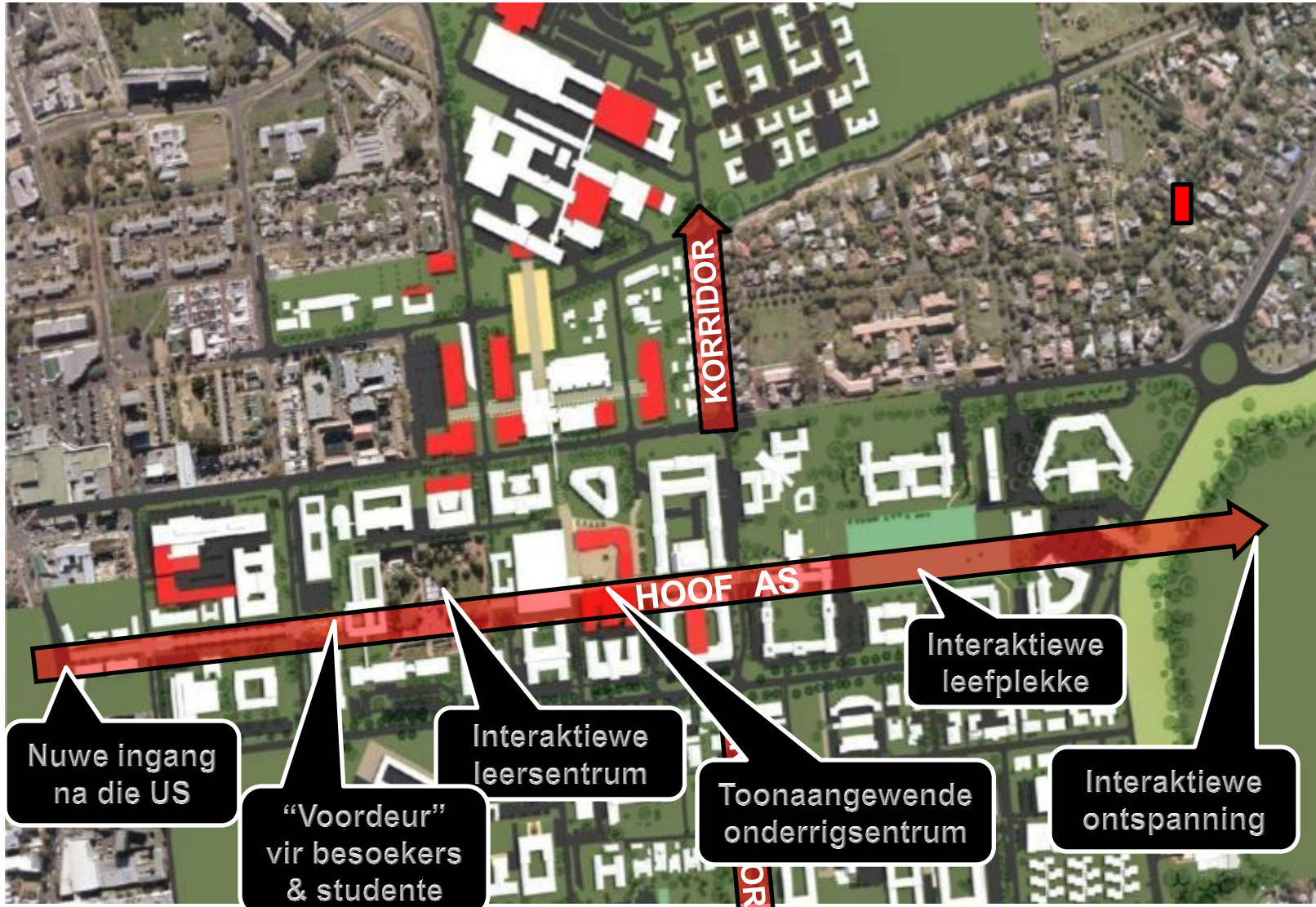
= R180 000 000







WOONERF-BENADERING

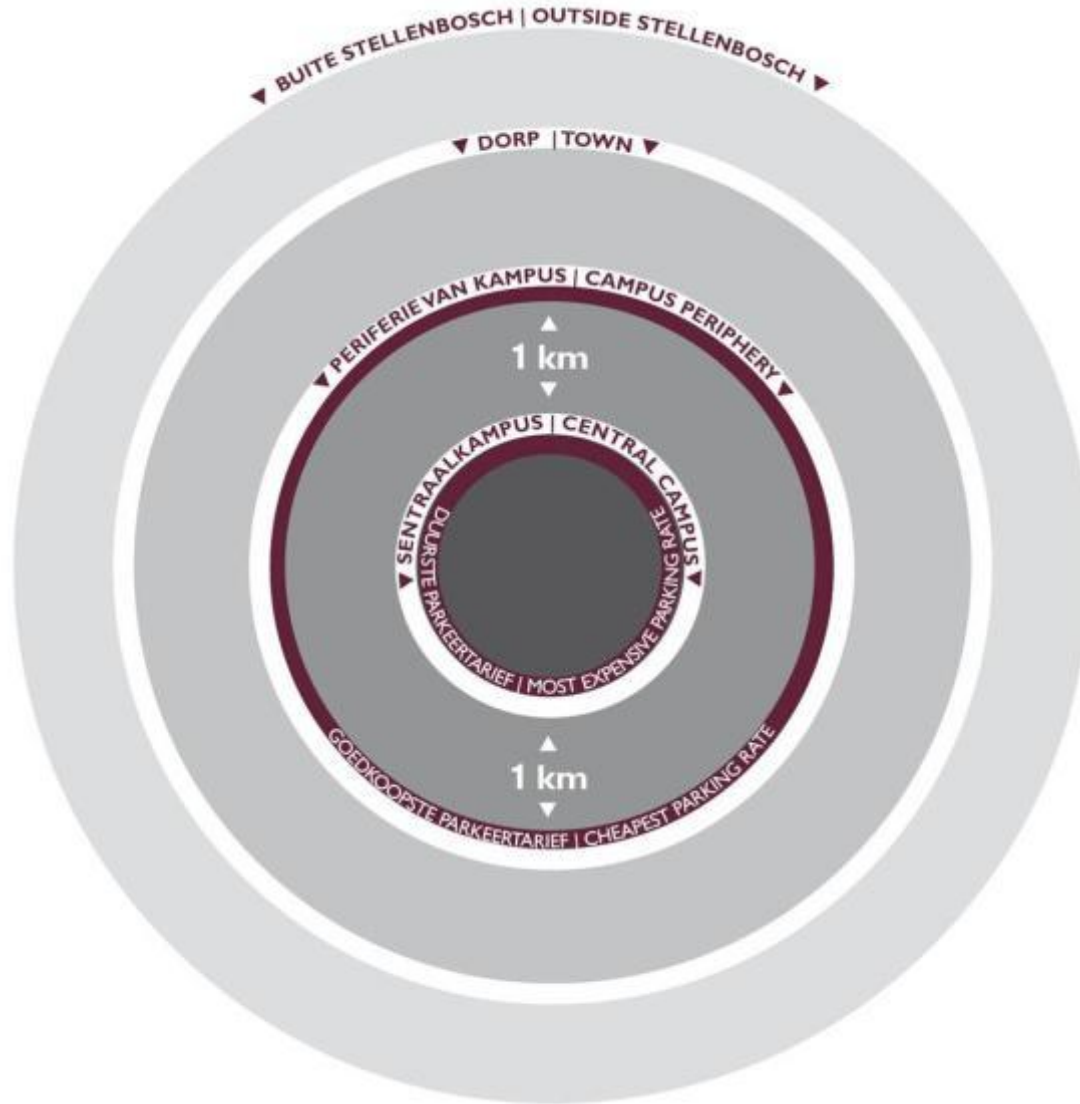


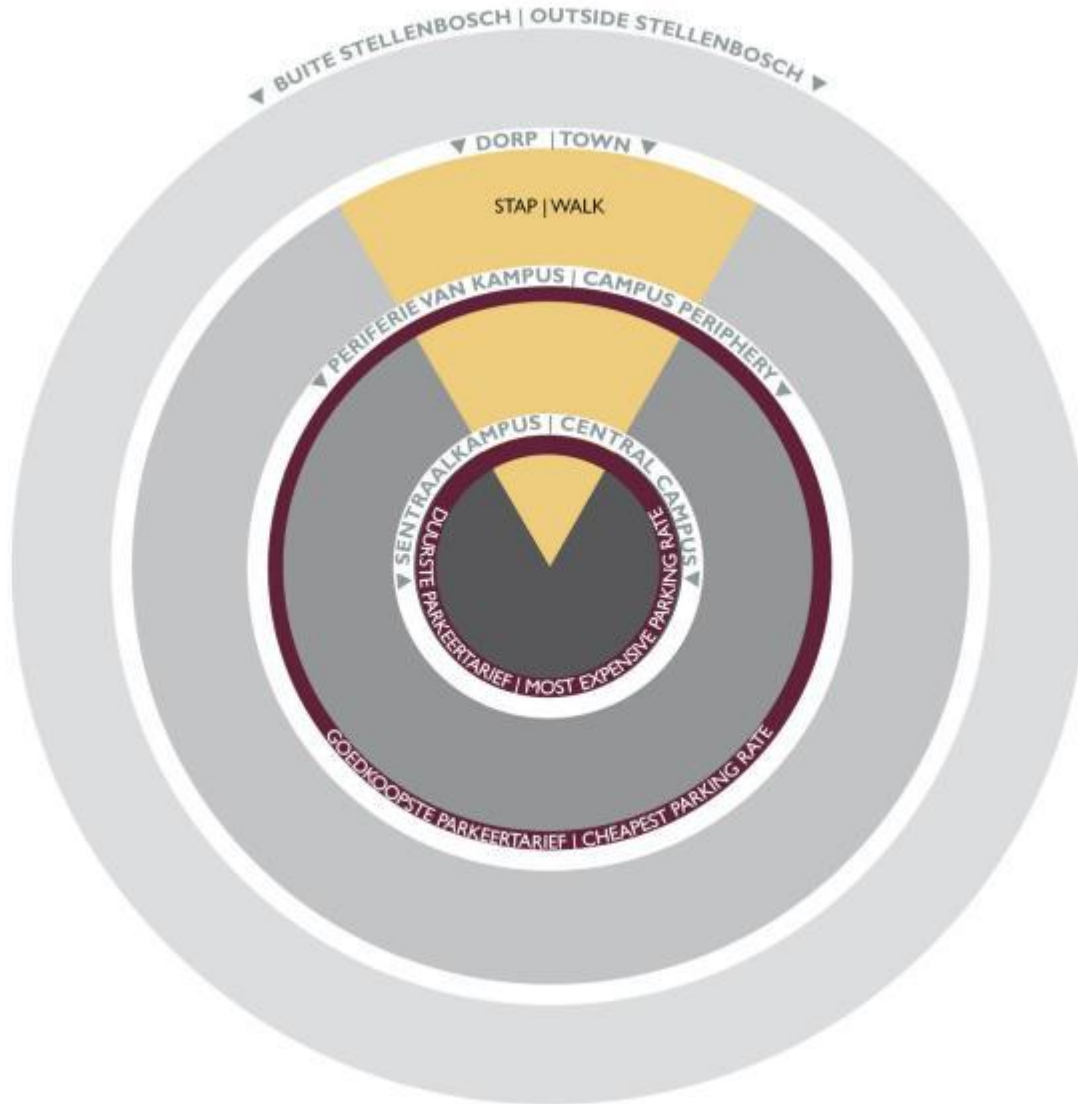


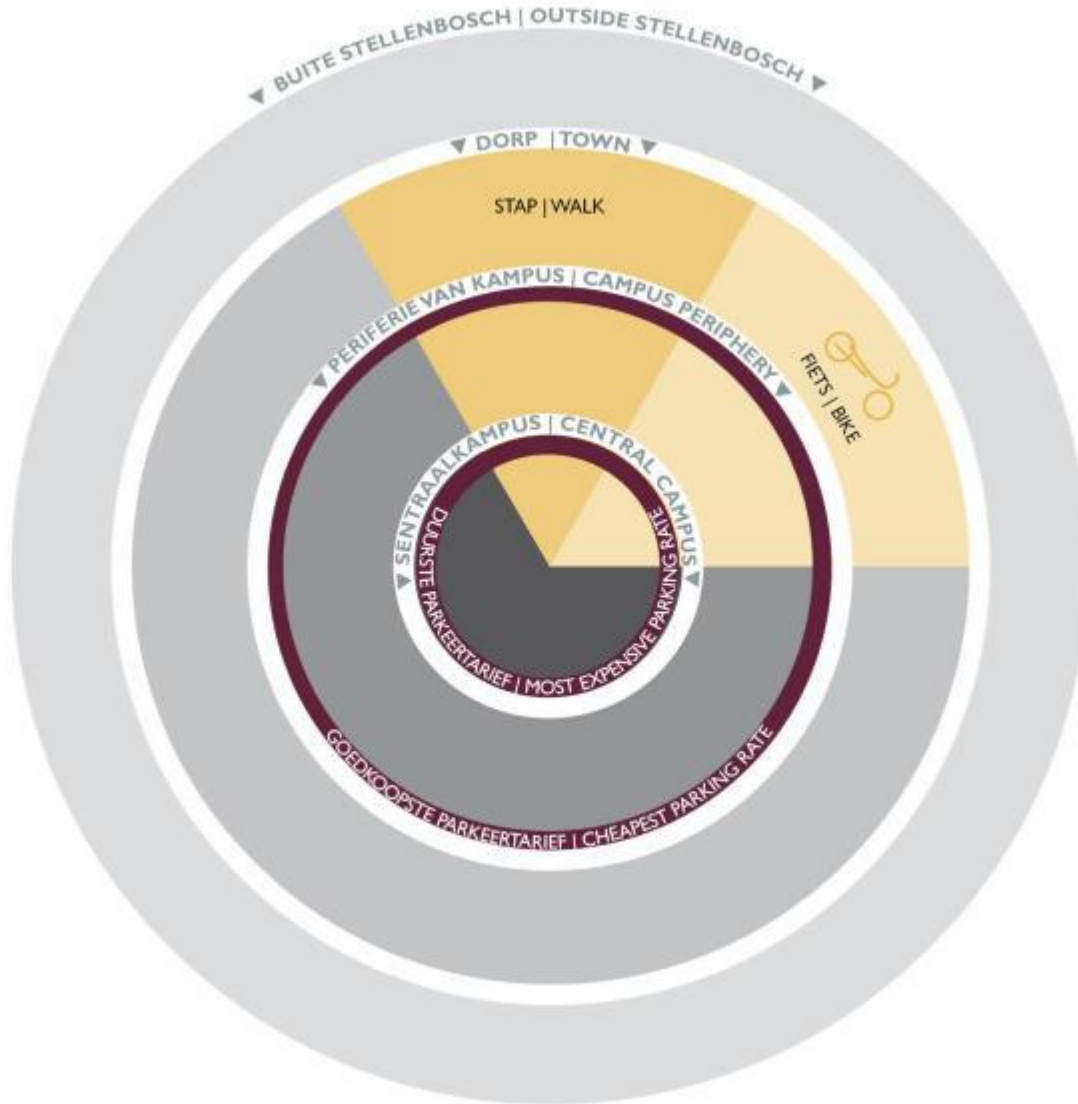
HOE BEWEEG ONS ROND?

MATIE

MOBILITEIT
MOBILITY





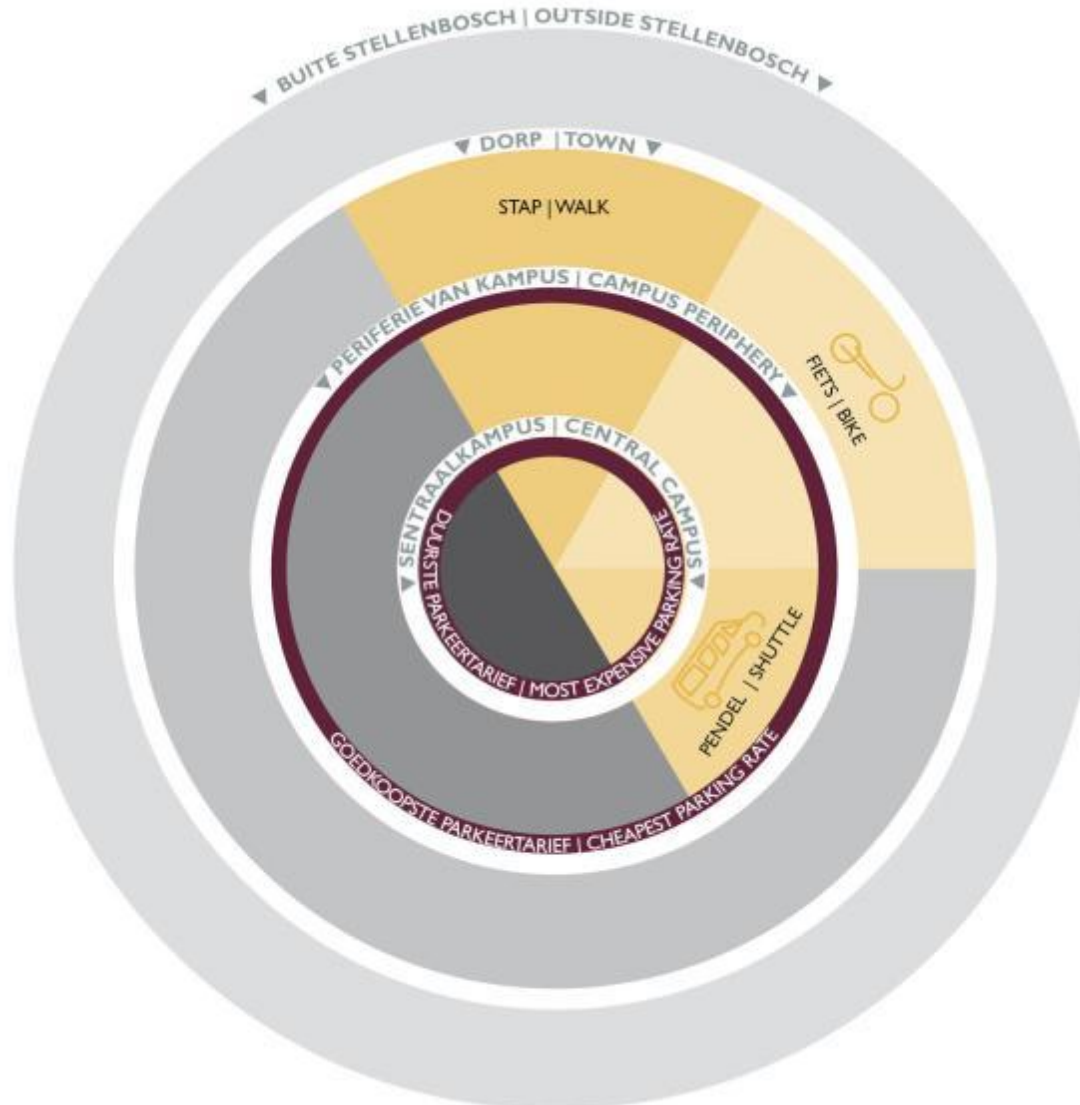




PENDEL / SHUTTLE

MATIE

MOBILITEIT
MOBILITY

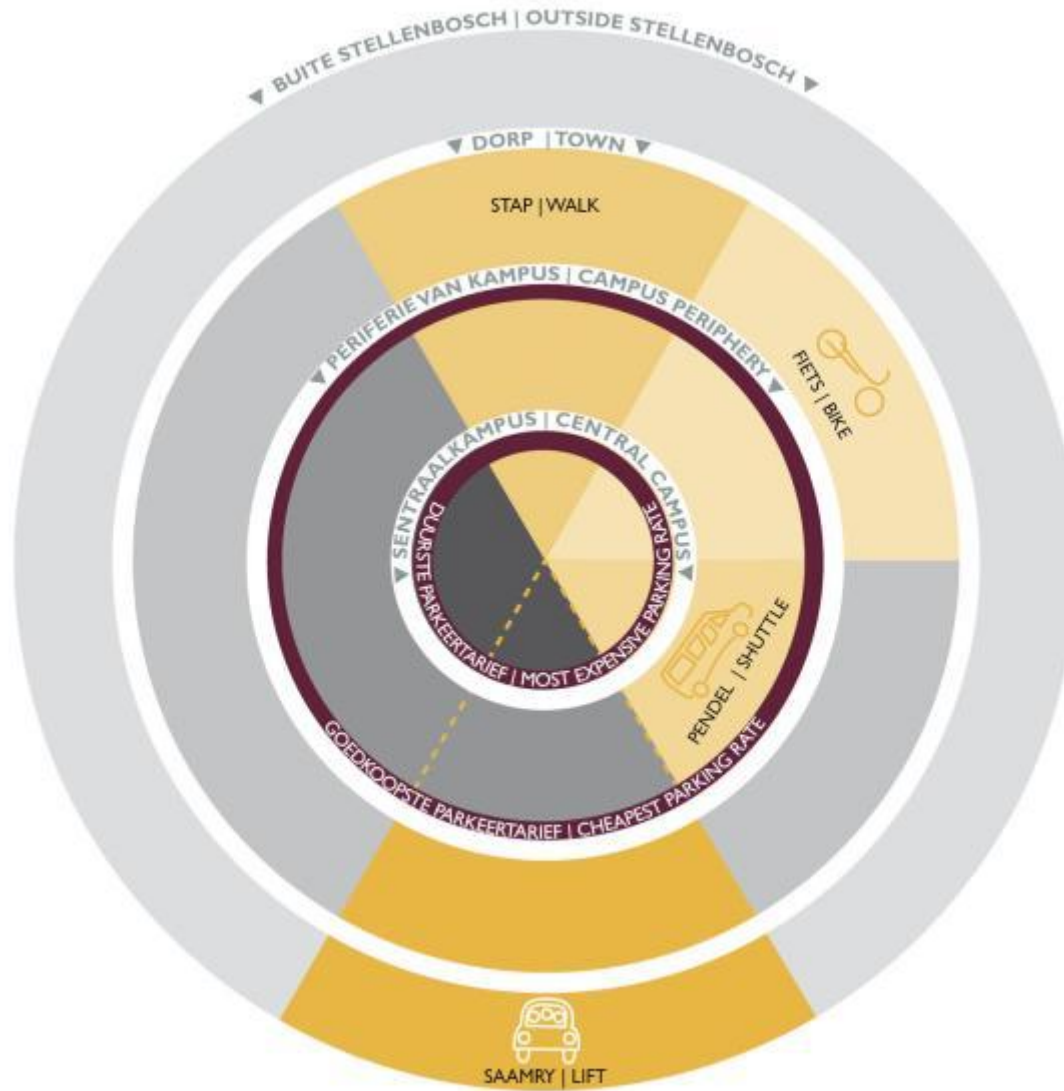




SAAMRY / LIFT CLUBS

MATIE

MOBILITEIT
MOBILITY

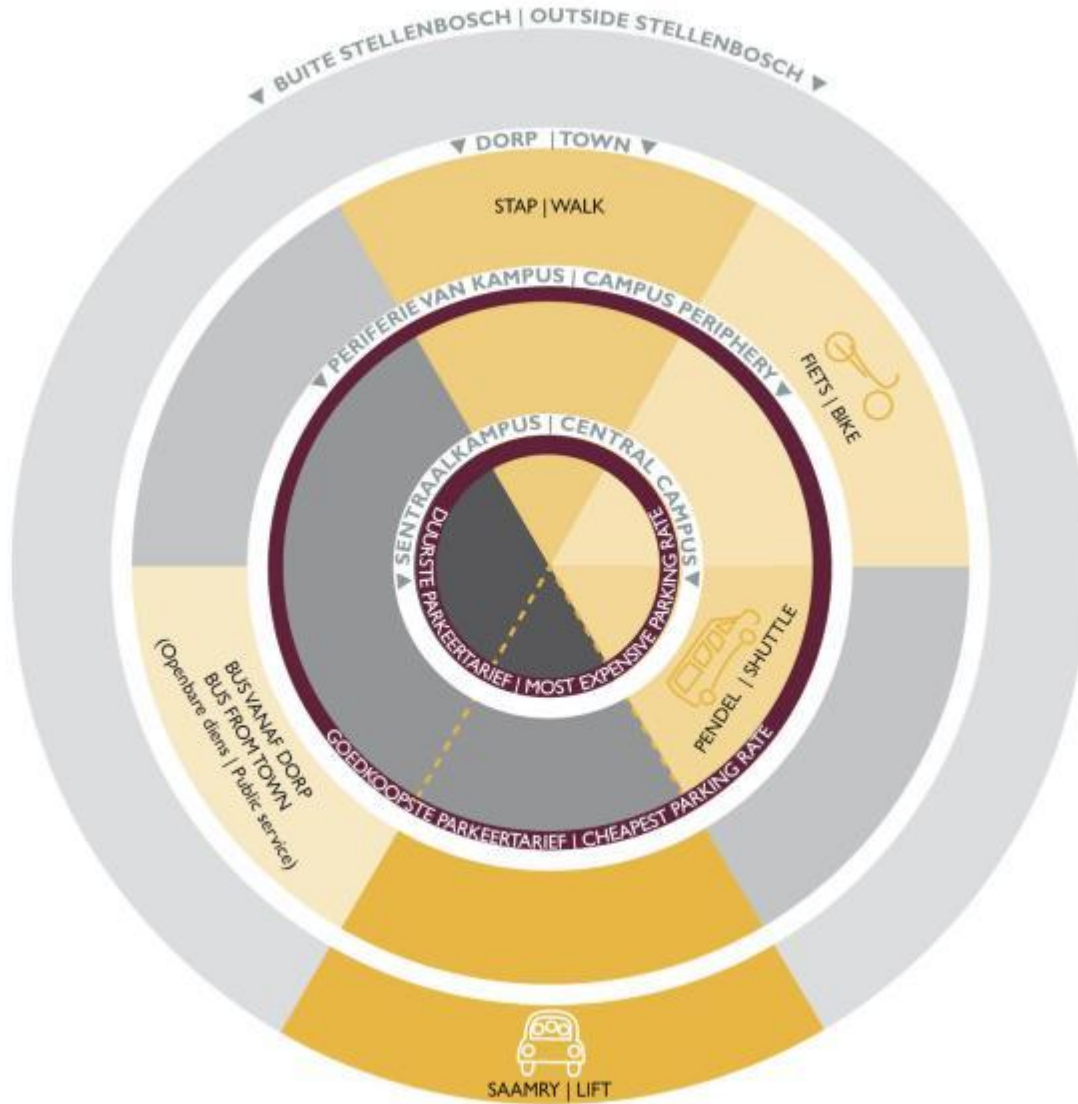




OPENBARE VERVOER (Plaaslik)

MATIE

MOBILITEIT
MOBILITY

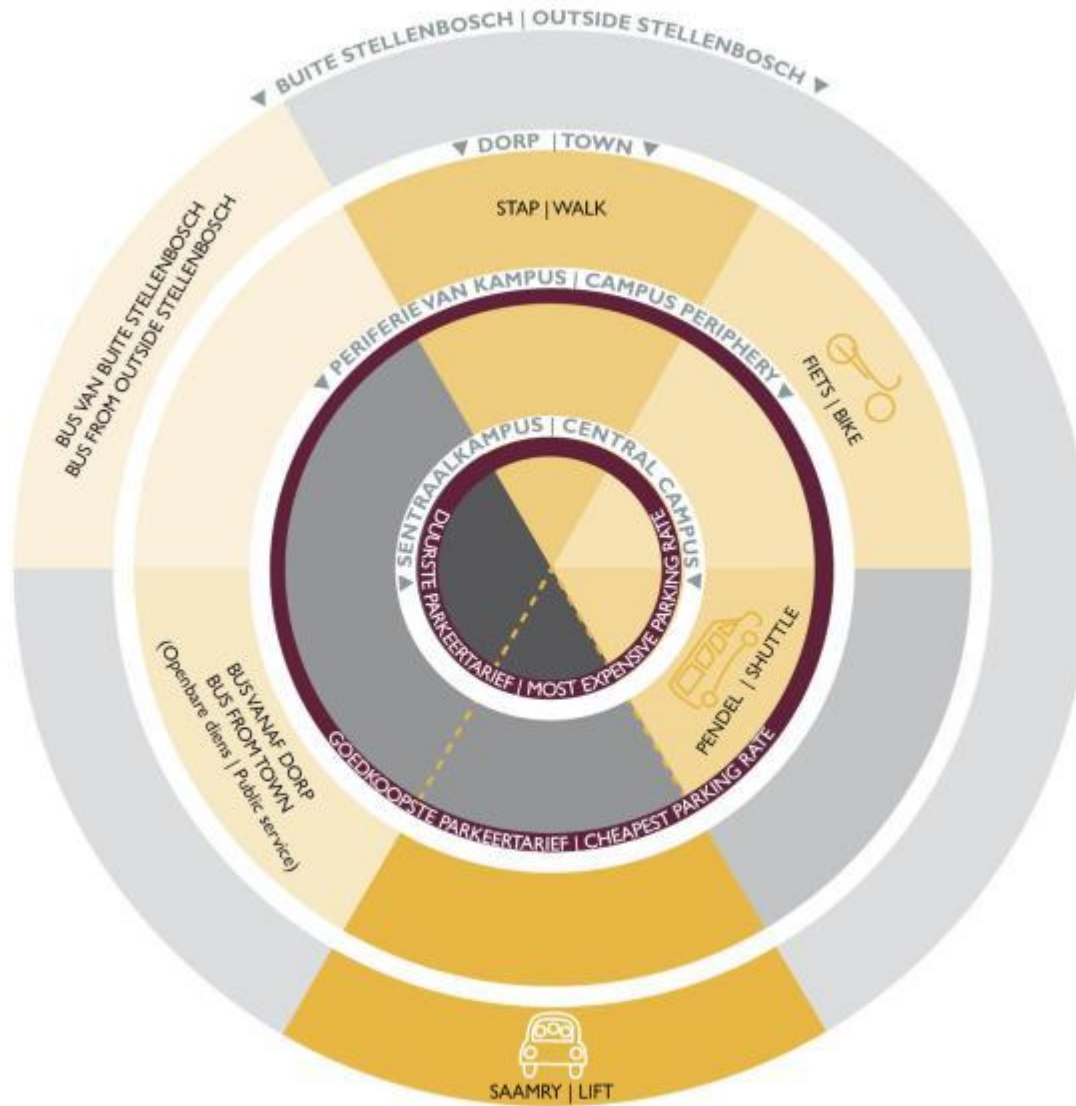




PUBLIC TRANSPORT (Long distance)

MATIE

MOBILITEIT
MOBILITY





STAP / WALK



MATIE-fiets te huur vanaf 15 Maart 2012

R400 per jaar

- *R1 000 deposit*
- *R600 back if bike is returned in good condition*



Veilige fietsloodse

- Reeds een tussen Neelsie en Peroldgebou

Special cycling lanes

- *First lane in Victoria Street*





Pilot project underway

Two routes:

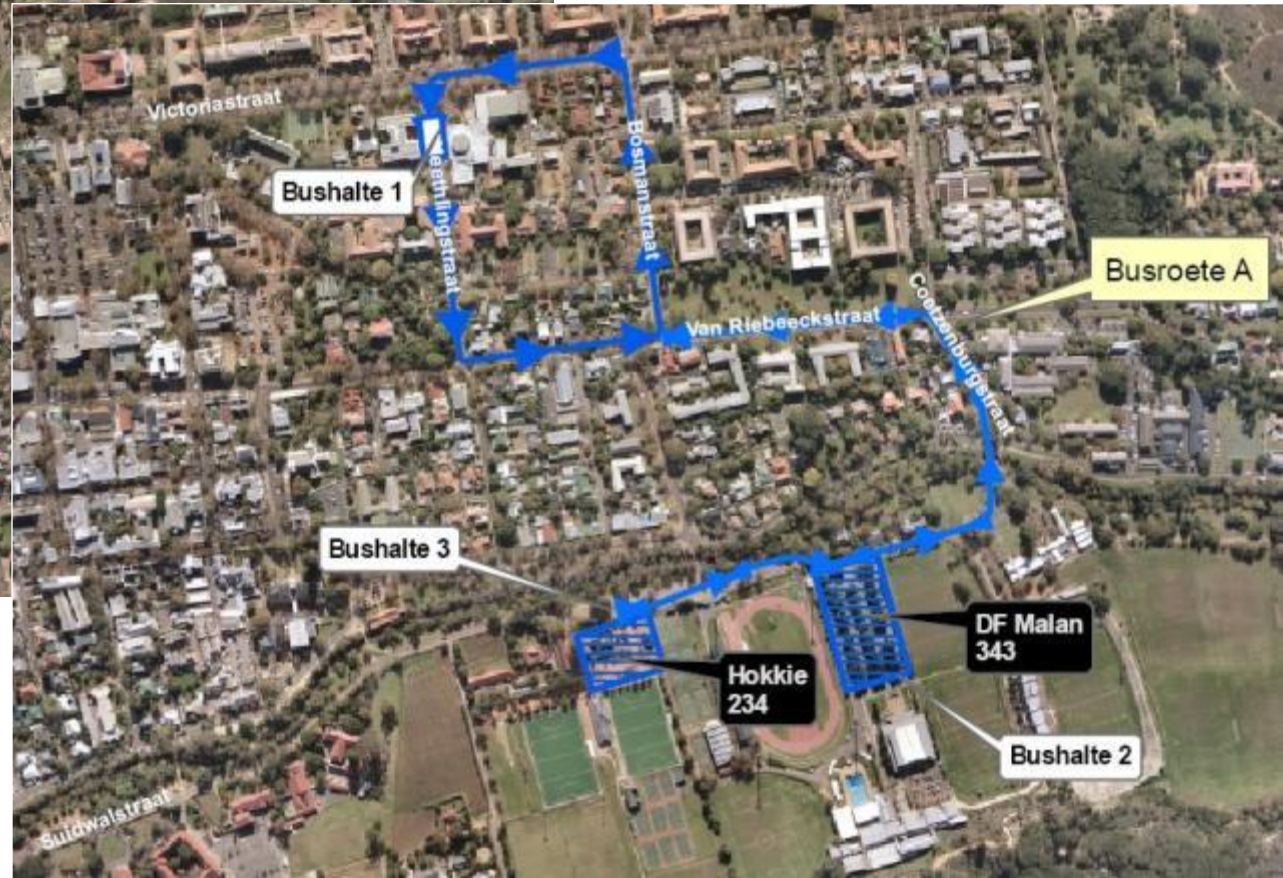
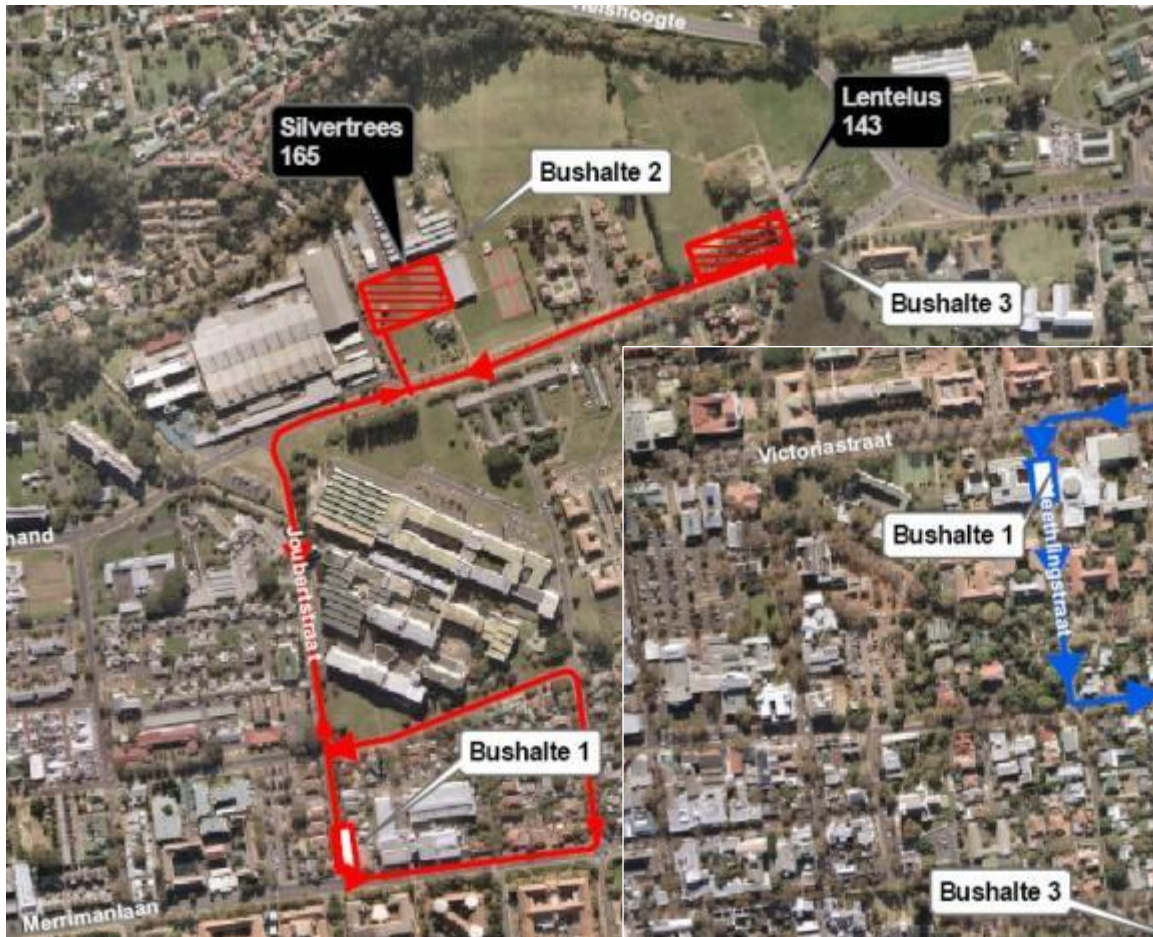
- Konservatorium – Coetzenburg
- Joubertstraat – Lentelus





LOODSPROJEK-PENDELROETES

MATIE





- *Class days 07:30–17:00*
- Tans gratis met US-kaart
- *Once fully implemented:*
 - *Everyone pays R45 this year*





Reeds gewild

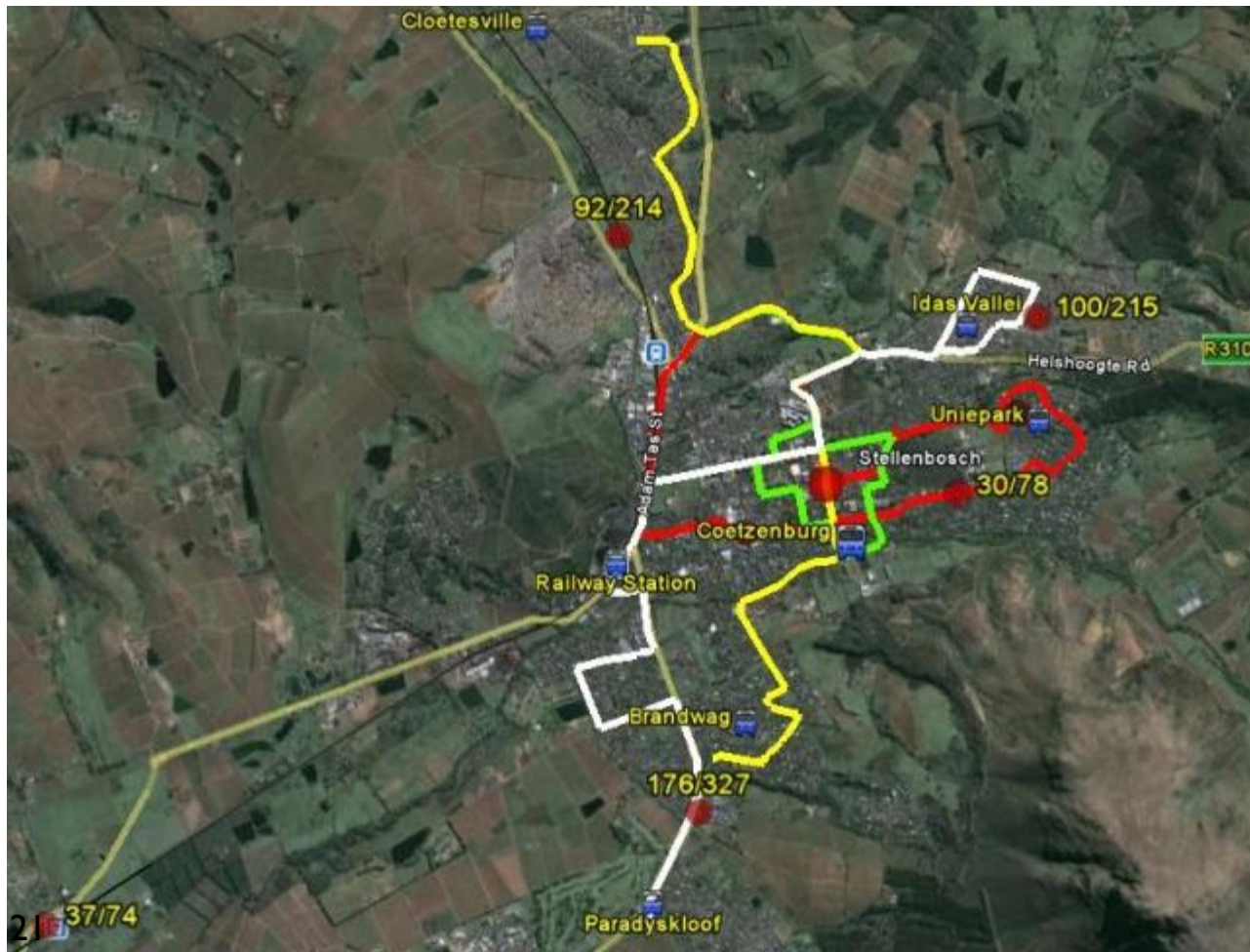
Problem: hard to arrange ad hoc lift

Oplossing: saamry-webblad



Soggens van woonbuurte af na sentrale punt

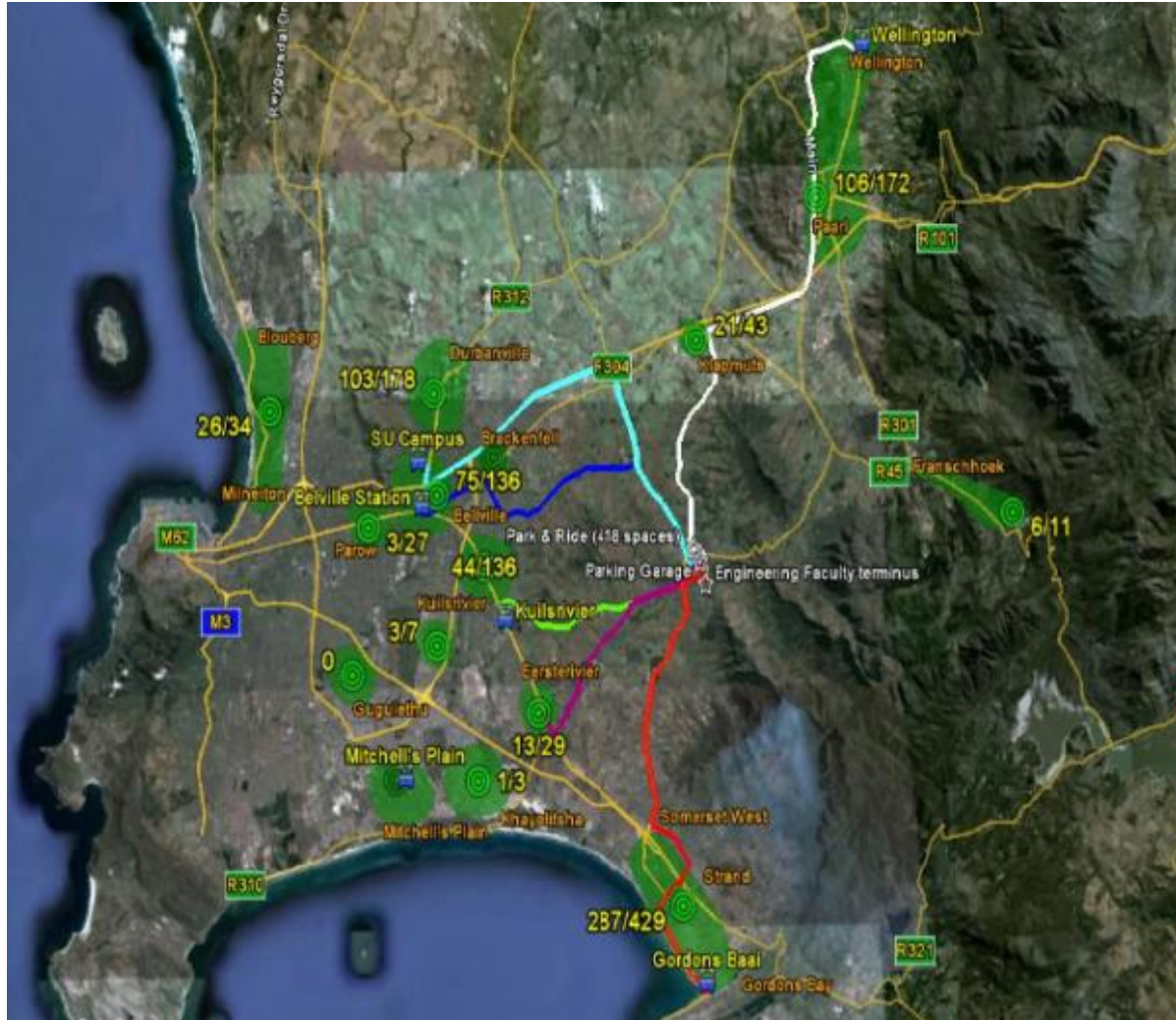
Smiddae van sentrale punt af na woonbuurte



*Possible
routes*



PUBLIC TRANSPORT: Long distance routes



Huidige &
moontlike
roetes



- Stap, fietsry, pendel & openbare vervoer verlig druk
- *Stricter policing*
- Gebruiker betaal
- *Full-cost calculation*





2012

R528 per jaar, soos volg:

Personeel betaal:

- R44 per maand

Students pay:

- *R264 per semester*





2013 <

- Sone bepaal tarief
- *Cheapest: Periphery*
- *Most expensive: Core*







15 Maart 2012 – *Watch this space ...*

Volhoubaarheid
Sustainability 





GaanGroen vir 'n GroenGenerasie *GoGreen for a GreenGeneration*





DANKIE / THANK YOU

Voorlegging beskikbaar by:

www.sun.ac.za/university/Management/rektor/toesprake.html

Presentation available at:

www.sun.ac.za/university/Management/rektor/speeches.html

Volhoubaarheidswebblad / Sustainability website:

www.sun.ac.za/volhoubaarheid or www.sun.ac.za/sustainability

VRAE/OPMERKINGS / QUESTIONS/REMARKS

groen_green@sun.ac.za