

A photograph of a university campus. In the foreground, a paved walkway leads towards a modern building with a glass facade and a patterned upper section. Several students are walking along the path; some are in motion, blurred. To the left, there are large, leafy trees. The sky is overcast. In the top right corner, there is a decorative graphic consisting of several curved, parallel lines in shades of purple, red, orange, and teal, set against a tan background.

2022

Guide for **NEWCOMERS**

www.sun.ac.za/welcome



Stellenbosch

UNIVERSITY
IYUNIVESITHI
UNIVERSITEIT

forward together
sonke siya phambili
saam vorentoe

HAVE YOU SAVED THESE NUMBERS ON YOUR CELL PHONE?

EMERGENCY NUMBERS FOR STUDENTS ON THE STELLENBOSCH CAMPUS

CSCD 24-Hour Crisis Service	010 205 3032 / 082 557 0880
Student Communities	021 808 3064
RISK MANAGEMENT AND CAMPUS SECURITY:	
Ops Room for general enquiries and the reporting of risks	021 808 4666
24-hour Emergency Line for the reporting of serious incidents and danger	021 808 2333
The Ombudsman	082 807 2994
Police Flying Squad	10111
Ambulance	084 124 (ER24) 082 911 (Netcare)
Medi-Clinic 24-hour emergency unit	021 861 2000

IMPORTANT NUMBERS: STELLENBOSCH CAMPUS

General Enquiries / Client Services	021 808 9111
Academic Affairs Council (AAC)	021 808 2493/2491
Admissions	021 808 9111
Bursaries and Loans	021 808 9111
Campus Health Services	021 808 3494/3496
Cape Institute for Agricultural Training: Elsenburg	021 808 5453
Centre for Student Communities (CSC)	021 808 3064
Centre for Student Counselling and Development (CSCD)	021 808 4707
Centre for Student Leadership, Experiential Education and Citizenship (CSLEEC)	021 808 2312
Centre for Student Recruitment and Career Advice (CSRC)	021 808 4709
Connect Office	021 808 3632
Corporate Communication	021 808 4977
Facilities Management	021 808 4666
Language Centre	021 808 2167
Library Enquiries	021 808 4380
Maties Sport	021 808 4642
Ombudsman	082 807 2994
Prim Committee	021 808 2493/2491
Risk Management and Campus Security	021 808 4666
Social worker	021 808 4994
Societies Council	021 808 2493/2491
Student Affairs	021 808 4585
Student Fees	021 808 4521
Stellenbosch Student Representative Council (SRC)	021 808 2493/2491
SU Gymnasium	021 808 9133

EMERGENCY NUMBERS FOR STUDENTS ON THE TYGERBERG CAMPUS

Maties ER24 (ambulance or counsellor)	010 205 3032
Student Affairs	021 938 9461
Risk Management and Campus Security	021 938 9507
The Ombudsman	082 807 2994
Police Flying Squad	10111
Poison Information Centre	086 155 5777
Tygerberg Hospital	021 938 4911

IMPORTANT NUMBERS: TYGERBERG CAMPUS

All Enquiries	021 938 9111
Academic Affairs Council (TAAC)	021 938 9591
Admissions	021 938 9580
Bursaries and Loans	021 938 9458/9129
Campus Health Services	021 938 9590
Centre for Student Counselling and Development (CSCD)	021 938 9590
Deputy Registrar	021 938 9379
Library Enquiries	021 938 9368
Marketing Office	021 938 9202
Maties Sport	021 938 9468
Ombudsman	082 807 2994
Prim Committee	021 938 9591
Risk Management and Campus Security	021 938 9507
Student Council	021 938 9591
Student Affairs	021 938 9789
Tygerberg Gymnasium	021 932 2888
Tygerberg Hospital	021 938 4911



CONTENTS

WELCOME, NEW MATIES!	2
The Stellenbosch University Executive (Rectorate)	3
Welcome	5
What is a Cluster?	6
Private Student Organisations & PSO Transport Service during Welcoming	7
Centre for Student Leadership Experiential Education & Citizenship	8
Covid-19	9
Students' Representative Council (SRC)	10
Tygerberg Student Representative Council (TSR)	12
Tygerberg Academic Affairs Council (TAAC)	14
Military Academy Student Council (MASC)	14
Academic Affairs Council (AAC)	15
Tygerberg Postgraduate Student Council (TPSC)	17
Tygerberg Prim Committee (TPC)	18
Centre for Student Counselling and Development	19
Campus Health Services	21
Languages of tuition at Stellenbosch University	22
Your journey to academic success starts here	23
Students with Disabilities	24
Equality Unit (EqU)	25
Stellenbosch University's Values, Human Rights and Disciplinary code	26
Social media, Insurance & Free writing advice	27
Stellenbosch University's Co-curricular Support Fund (SUCSF)	28
Welcoming Ambassador & Societies Council Executive Committee	28
Pre-registration clearance (verification) of international degree-seeking students	29
Library	29
Maties Sport	30
Maties Gymnasium	31
Computer User Areas (CUAs)	32
Maties care about the environment	34
Registration 2022	35
Extended Degree Programmes (EDPs) & Online Onboarding Programme	37
Tygerberg Campus Map	39
Stellenbosch Campus Map	40
Stellenbosch Campus Map – Index	41

@stellenboschuni – @sustudentaffairs

Published by the Corporate Communication and Marketing Division, in conjunction with the Division Student Affairs, Stellenbosch University

EDITOR: Ayanda Ntuli
CONTENT EDITOR: Audrey Poole
DESIGN: Euné van der Walt
Printing: African Sun Media

WELCOME, NEW MATIES!

Dear newcomer student

Welcome to Stellenbosch University!

You're at the frontier of a new chapter in your life. Feelings of uncertainty are normal and you might feel overwhelmed by some of the obstacles lurking at the start of this new journey. But I know that you will adjust and adapt quickly, and soon claim Stellenbosch University (SU) as your new adopted home.

Most of you will have finished high school in 2021, and you've done it under extraordinary circumstances. I'd like to congratulate you on this achievement. You've worked hard, persevered, passed your final exams, and are now on the brink of becoming a Matie. This is no small feat, so well done!

The past two years have been tough, and your high school experience was considerably different from students who matriculated before Covid-19. And while the pandemic will still have an effect on how we do things in the foreseeable future, we're also very excited to welcome students to our campuses. Naturally, we'll also continue to follow the necessary protocols for the health and safety of staff and students, and monitor the Covid-19 situation as it unfolds.

SU is a residential university, and getting a qualification from a university is about much more than just going to class and writing exams. It's often the social encounters that will shape your life's path. And being physically present will only enrich this experience. You'll make friends from different walks of life; now and then you'll have to deal with scenarios that pull you out of your comfort zone; and you'll experience highs, lows and everything in between. See these joys and challenges as opportunities to grow and learn.

That being said, you're at Maties – first and foremost – to get an academic qualification. And our overarching priority for 2022 remains the same as in previous years: to succeed with the academic project, and to remain sustainable as a leading university on our continent, and indeed the world.

You might have already familiarised yourself with the exciting On-boarding Programme that has been rolled out online. This special programme introduces you to SU and helps you orientate yourself and prepare for your studies and the unique student experience awaiting you on campus. This starts with our annual Welcoming Programme.

We will do everything possible to make your introduction to campus life special and memorable, as we always do. Keep an eye on www.sun.ac.za/welcome for the latest developments and schedule. From now, you will also have access to various support services at our [Division of Student Affairs](#). The staff and students here are ready to guide you every step of the way. Please make use of their services to make the most of your time at university.

And if you need help in the weeks and months ahead, simply reach out and ask. Remember, you're not in this alone. At Maties we move forward together.



Prof Wim de Villiers
Rector and Vice-Chancellor



SCAN HERE

THE STELLENBOSCH UNIVERSITY EXECUTIVE (RECTORATE)

The Rectorate is responsible for the day-to-day operational management of the University. The Rectorate consists principally of the Rector and Deputy Vice-Chancellors responsible for the functions of the institution, as well as the Chief Operating Officer. The Deputy Vice-Chancellors are respectively responsible for Learning and Teaching; Research, Innovation and Postgraduate Studies; Social Impact, Transformation and Personnel; as well as Strategy, Global and Corporate Affairs. The Registrar ensures that the academic administration of the University runs smoothly. The Rector may appoint senior staff to attend the meetings of the Rectorate and to support the operations of the Rectorate as required. The General Management Committee (GMC) consists of the members of the Rectorate, the deans of the University's 10 faculties, the Registrar as well as chief and senior directors of the various professional, administrative and support service divisions. Matters of academic and administrative interest are discussed by the GMC and the members play an advisory role to the Rectorate.



Prof Wim De Villiers
Rector and Vice-Chancellor



Prof Stan Du Plessis
Chief Operating Officer



Prof Deresh Ramjugernath
*Deputy Vice-Chancellor:
Learning and Teaching*



Prof Eugene Cloete
*Deputy Vice-Chancellor:
Research, Innovation and
Postgraduate Studies*



Prof Nico Koopman
*Deputy Vice-Chancellor:
Social Impact, Transformation & Personnel*



Prof Hester Klopper
*Deputy Vice-Chancellor:
Strategy, Global and Corporate Affairs*



Mr Mohamed Shaikh
Executive Manager: Rectorate



Dr Ronel Retief
Registrar

CONGRATULATIONS ON YOUR ADMISSION TO STELLENBOSCH UNIVERSITY!

We know you are not only coming here to get a degree, but also an education, and to enjoy this exciting period in your life to the full. We are looking forward to receiving you on campus. Please read through this letter to get an idea of what to expect at Stellenbosch University when you arrive on campus.

WHY HAVE A WELCOMING PROGRAMME OR ORIENTATION WEEK?

The welcoming programme introduces you to your residence, private student organisation (PSO), cluster and faculty so that you can find your feet in your new environment quickly. During the introduction to your residence or PSO ward you will meet the communities that you can join. Even though you will meet many newcomer students in your residence or PSO ward during the welcoming period, your cluster in particular will open up new worlds and expose you to even more newcomer students who might share the same values and interests as you.

You will visit the faculties together (or online), so by the time you attend your first class there should be a few familiar faces already. The introduction to your faculty will equip you for the start of your academic career. By following your faculty's programme carefully you will ensure that you are ready for your first day of class.

Use the exciting welcoming period as an opportunity to think critically about your environment, fellow students and leaders.

DURING THE WELCOMING PROGRAMME, LOOK FOR OPPORTUNITIES TO:

- Contribute to your development and preparation for the academic year ahead.
- Expose yourself to a positive environments and relationships.
- Fully live out your values and interests.
- Become the person you have always wanted to be.

WHAT MAKES UNIVERSITY LIFE SO UNIQUE?

Now that you know what to expect of the welcoming, you also need to know what not to expect: a repetition of your school experience. University is a whole new ball game. University gives you an opportunity to expand your world and to discover and exploit countless possibilities. Whether you have just completed grade 12, or already have a gap year behind you, you can rest assured that your university experience will be incomparable with anything else. University is not only there to ensure that you grow academically, but also gives you a chance to explore other facets of your life. Here you will have the freedom to choose your friends and role-models, and to try out activities that you may not have encountered before.

Who knows, this might just be the beginning of an unforgettable journey of discovery! As long as you are prepared to work hard to make your dreams come true, you have the potential to be anything you want to be. Here you will have an opportunity to find your own voice so that you can participate in critical conversations on campus.

By now you have probably heard a lot about what you can expect from your first few days at university, but this is an opportunity for you to form your own ideas. Remember, you do not have to accept everything passively; rather think critically about your experience.

HOW CAN YOU MAKE IT UNIQUE FOR YOURSELF?

At Stellenbosch we believe that students are our knowledge partners. Your success at university therefore lies in your hands. Success at university does not, however, only mean successful completion of your studies, but also that you have grown and developed as a human being.

ASK YOURSELF AND YOUR FELLOW STUDENTS THESE CRUCIAL QUESTIONS:

- What is important to you?
- Which aspects of yourself are you most keen to develop?
- Besides a degree, what else would you eventually like to leave with?
- What contribution would you like to make in your community?

YOU DO NOT HAVE TO WAIT UNTIL 'ONE DAY'; START MAKING A DIFFERENCE TODAY!

Embrace every opportunity to create memories with new and old friends and to learn new skills, even outside the lecture halls. Explore the world around you, but do not lose sight of the bigger picture. University is not only there for getting a degree or enjoying being young, is also a chance to test your boundaries in a responsible manner and to broaden your horizons.

We hope you are looking forward to your time at Stellenbosch University, because we are excited about joining you on this journey.

SCAN HERE



WHAT IS A CLUSTER?

Newcomer students join a campus that has been organised into listening, learning and living communities (LLL). All the clusters, residences, Private Student Organisations (PSOs), mentor groups, tutor groups and the listening, learning and living houses for senior students form part of LLL. The purpose of LLL is to integrate the out-of-class experience with the in-class experience to ensure academic success and a well-rounded education for students.

CLUSTERS

A cluster is made up of a number of residences and one or two PSO communities. Clusters play a significant role in the integration and support of new students on campus and ensure that students experience the University as a caring and nurturing place. They also integrate the university experience of residence students and students in private accommodation. Clusters are increasingly used as a way of organising the University, for example, faculties tend to use clusters as a basis on which to form subject tutor groups. The residences and PSOs belong to one of six clusters on the Stellenbosch campus, or the one on Tygerberg campus. The Senior Living Space forms the eighth cluster.

MENTORS

Mentors are senior students who are appointed in residences and PSOs to assist new students with their adjustment to university life. Each new student should have access to a mentor. The mentor already plays an important role during the welcoming period with general assistance regarding university life queries and psychosocial support. Through the mentor, the new students have the opportunity to partake in the wellness programme of the University, which aims to enhance the wellness of students throughout the year. When you arrive at your residence or PSO, a mentor should be allocated to you. Should you not be allocated a mentor, or have any queries, please contact Client Services at tel 021 808 9111 or info@sun.ac.za.



SCAN HERE

Visit www.sun.ac.za/welcome for the programmes and latest information

COMPOSITION OF CLUSTERS



SCAN HERE

amaMaties

Capri, Equité, Erica, Helderberg, Huis Neethling, Nemesia and Serruria

Rubix

Heemstede, Metanoia, Nerina, Pieke and Venustia

Tygerberg

Huis Francie van Zijl, Hippokrates, Meerhoff, Nkosi Johnson, Osler, Ubuntu and eNkanyini

Validus

Goldfields, Huis Visser, Huis Marais, Simonsberg, ISA, Olympus and Academia

VicMeyr

Aurora, Dagbreek, Huis ten Bosch, Lydia, Majuba and Minerva

Victoria

Monica, Harmonie, Oude Molen, Wilgenhof and Silene

Wimbledon

Aristea, Eendrag, Helshoogte, Irene, Sonop and Vesta

Senior Living Spaces

Concordia, Huis de Villiers, Huis Macdonald, Lobelia, Huis Russel Botman and The Village

PRIVATE STUDENT ORGANISATIONS

One of Stellenbosch University's key focus areas for student development is the co-curricular and the out-of-class experience. The Private Student Organisations (PSOs) have been positioned in order to fulfil this need and to give students the opportunity to have a wholesome and diverse University experience. All students who do not make use of the university's residence accommodation are automatically members of a PSO – approximately 70% of the University's students. These students are divided in different PSOs which provide them with all the opportunities for successful social and academic integration on campus.

The PSO community does not provide accommodation for members, but amongst others PSO students can use their student cards to book and enjoy meals at an open residence dining hall in their particular cluster. The PSO assigns a mentor to each new student who can assist them with all these processes.

There are ten PSOs on Stellenbosch campus and one on Tygerberg campus. New students are divided into a PSO in accordance with the University's placement policy. Students are notified about their PSO allocation via email and will also receive information regarding their PSO's welcoming programme as well as their meeting points.

PSO TRANSPORT SERVICE DURING WELCOMING

Students who are allocated to Private Student Organisations (PSOs) are encouraged to take part in the welcoming programme of their specific PSO. As the programmes end in the evening, a free transport service is available to all PSO students to ensure they get home safely. The transport service leaves at 19:15 and 21:15 from the PSO Hub, 11 Bosman Street, Stellenbosch and will get students safely to their homes in Stellenbosch and specifically indicated drop-off points in surrounding areas.*

The drop-off points where students will be taken to, are the following:

- SAPS Offices: Bellville, Kuils River, Athlone, Mitchells Plain, Paarl, Somerset-West and Kayamandi
- De Zalze Golf Estate, Stellenbosch (gate)
- Paradyskloof, Stellenbosch (Engen garage)
- Sonnebloem Rd, Idasvallei, Stellenbosch (Brent Oil garage)
- Welgevonden Estate, Stellenbosch (gate)
- 87 Lang Street, Cloeteville, Stellenbosch (Engen garage)
- Stellenbosch central area, Stellenbosch

* This information is subject to change, due to Covid-19 regulations

during welcoming. The PSOs are jointly managed by the PSO Office which is situated within the Centre for Student Communities in the Division Student Affairs. Students are not permitted to change PSOs and as such their allocation remains for the duration of their University journey.

The PSO to which a student has been allocated also determines the cluster to which that student belongs to. Should you not receive any notification of your PSO allocation, please contact Client Services on tel 021 808 9111 or info@sun.ac.za. Students are also encouraged to familiarise themselves with the compulsory PSO fees as depicted annually in the Stellenbosch University Student Fees Booklet.

STELLENBOSCH PSOs

Aristea, Aurora, Capri, Equité, Olympus, Oude Molen, Pieke, Silene, Venustia and Vesta

TYGERBERG PSO

Osler

This service is only available during the welcoming period (2-12 February 2022). Students must please log a request for the shuttle service by 11:00 on the required day, indicate the specific drop-off point. Please let your respective House Committee or the PSO office at psos@sun.ac.za know.



SCAN HERE



CENTRE FOR STUDENT LEADERSHIP, EXPERIENTIAL EDUCATION & CITIZENSHIP

The aim of the Centre for Student Leadership, Experiential Education and Citizenship (CSLEEC) is to ensure that Stellenbosch University (SU) provides comprehensive and coherent leadership experiences for its students by the development of graduate attributes. CSLEEC consists of the following portfolios:

CO-CURRICULUM OFFICE

The Co-Curriculum Office positions experiential learning as pedagogy for social justice through Shared Humanity: Lessons in Critical Thinking; academic transcript recognition for approved co-curricular activities; training in the principles of designing for transformative experiential learning; and the experiential learning prospectus. Collaborative partnerships, research, monitoring and evaluation assure alignment to the SU Vision 2040.

FVZS INSTITUTE FOR STUDENT LEADERSHIP DEVELOPMENT (FVZSI)

Through the lens of democracy, human rights and social justice, in honour of a great South African thought-leader, Dr Frederik van Zyl Slabbert, the FVZSI's leadership offerings (from semester-long short courses recognised on the academic transcript to an integrated critical engagement portfolio) empower youth leaders to challenge their roles as active citizens within the broader global context.

ONLINE PROGRAMMING

The CSLEEC Online Programming team advises the Co-Curriculum and Student Governance teams with its experiential learning and leadership development programmes, as well as short courses offered by the FVZS Institute – enhancing, enabling, and extending access through online platforms, facilitating transformative student experiences across the institution, the continent, and the world.

STUDENT GOVERNANCE

Student Governance promotes ethical student governance principles in the face of governance challenges in the twenty-first century, in South Africa, Africa and around the globe. Guided by the SU Co-Curriculum Competency Framework and Graduate Attributes, student leaders are provided with leadership development opportunities empowering them to formulate solutions to some of the complexities and challenges student leaders are confronted with today.

Students are represented and supported by the following Student Governance structures:

- The **Students' Representative Council (SRC)** is the highest student representative and decision-making body and envisions a progressive and thriving community with student success at its core. It ensures that all students are well informed and supported throughout the welcoming programme, leading up to the first academic day and assists students who are academically excluded and those who are awaiting appeal notification during January. Students are welcome to visit the SRC office for any support during this time to ensure that student success and wellbeing are promoted. The SRC support all students who are unable to either pay the initial residence fee or who have historical debt and cannot afford to register for the academic year. The SRC supports students who have not been placed in residences and are struggling to find accommodation with temporary accommodation during the welcoming period. For enquiries, contact sr@sun.ac.za.
- The **Societies Council** is a student-driven organisation representing all registered and new societies at the Stellenbosch campus. The Societies Council provide numerous opportunities for students to engage with the different aspects of their personal development such as leadership experience, teamwork, or to further their own interests, like research and community development. For enquiries, contact Tamara Wicomb at twicomb@sun.ac.za.
- The **Academic Affairs Council (AAC)** primary responsibility is to represent and protect your academic affairs and development as a student. This includes academic complaints, Language Policy grievances, HEMIS, test or timetable clashes, plagiarism issues, problems with lecturers, mentors, tutors or tut classes and co-curricular development. If you have any problems affecting your academics, we are the ones you want to talk to. Contact us or visit our social media pages for more information on Facebook (Stellenbosch University

AAC), Instagram (@abrstellies), or send an email to the chairperson, George van Dyk, at vandyk@sun.ac.za.

- The **Prim Committee (PC)** is an SRC ex-officio student body that serves as a central body for all house committees and is composed of the Primarii of the 42 student communities on campus; which includes residences and Private Student Organisations (PSOs). The PC functions as a leadership collaboration committee whereby the Prims from the various communities discuss events and topics relevant to the houses and campus. You are represented on the PC through the Prim in your student community, so make sure that you take any questions, issues, and concerns that you may have to the leadership within the residence or PSO you are a part of. If there is anything that your community leadership cannot solve you are welcome to contact the PC chair, Toni Solomon, at toniclaire@sun.ac.za, or PC Vice-Chair, Joshua Eva, at dawg@sun.ac.za or Senior PC Chair, Christo van der Bank, at thunderbank@sun.ac.za.
- The **Military Student Council** (Saldanha campus) is an SRC ex-officio body consisting of students elected from different year groups by the student body. This Council is elected to create an environment that is conducive and best supports the students to succeed in their academics as well as the development of professional military standards. For enquiries, contact Pule Lebaka at pjlebaka@sun.ac.za.
- The **Student Court** is a judiciary student body that is responsible for the resolution of student disputes, intersociety disputes and SRC constitutional matters. For enquiries, contact studentehof@sun.ac.za.
- The **Student Parliament** is an oversight student body that seeks to strengthen constitutional democracy within student leadership by actively promoting accountability, transparency and consultative governance within the SU student community. For enquiries, contact studpar@sun.ac.za.
- The **Senior Prim Committee** an SRC ex-officio student body that serves as a central body for senior residences. For enquiries, contact Eugene Nell at enell@sun.ac.za.
- The **Election Convenor** is an independent student body enshrined in the Student Constitution, the body exists to facilitate and conduct free and fair elections. For enquiries, contact srcelection@sun.ac.za.
- Die Matie** is an independent student newspaper and is published during the academic year. The editorial content includes sections on news, student life, sport, current affairs, arts and entertainment. For enquiries, contact the editor, Tiaan Booyens, at 23545550@sun.ac.za.

The following Student Governance structures are supported at the **Tygerberg Campus**:

- The **Tygerberg Student Representative Council (TSR)** is the highest form of representation and governance for the student body at the Faculty of Medicine and Health Sciences. The members of this team tackle every aspect of student life unique to this *healthcare mecca* and makes it their mission to ensure the well-being of students through portfolio-based management. Contact: tsrchair@sun.ac.za.
- The **Tygerberg Societies Council (TSC)** is a student-driven organisation representing all registered societies. Contact: tscchair@sun.ac.za.
- The **Tygerberg Academic Affairs Council (TAAC)** is a statutory student body facilitating a mutually respectful communication channel between students (via class representatives) and the Faculty regarding academic matters. Contact: tabrchair@sun.ac.za.
- The **Tygerberg Postgraduate Student Council (TPSC)** represents and address the needs of postgraduate students.

ADDRESS: 9 Bosman Street, Stellenbosch
EMAIL: clsleec@sun.ac.za
TEL: 021 808 9798
WEBSITE: www.sun.ac.za/clsleec

COVID-19

Stellenbosch University (SU) is closely monitoring developments surrounding the Covid-19 pandemic.

Our Covid-19 Contingency Committee, established in February 2020, has been expanded to an overarching Institutional Committee for Business Continuity (ICBC). It is served by a Medical Advisory Committee, and seven workstreams, covering student services; staff; learning and teaching; communications, community impact and external relations; campus operations; finance and legal matters; as well as research.

We are doing everything we possibly can to ensure that our students can complete their academic year, and that the University remains sustainable.

Stay informed of the latest developments communicated via our official channels and visit <https://bit.ly/SUcoronavirus>.



SCAN HERE

INSTITUTIONAL RULE REGARDING VACCINATION AGAINST NOVEL CORONAVIRUS DISEASE

Covid-19 is a highly infectious disease which, in some of its victims, particularly older people or persons with co-morbidities, causes serious illness and even death.

After conducting a risk assessment as prescribed by the Consolidated Directions on Occupational Health and Safety in Certain Workspaces (Government Notice No. R.499 in Government Gazette No. 44700 of 11 June 2021), SU management decided that a high rate of vaccinations is required to return to safety to full in-person teaching and learning.

SU consequently intends making a binding institutional rule which will take full effect from the start of the second quarter in 2022 or such later date as the Council may determine, and will remain in operation until the COVID-19 pandemic has passed or diminished to a level where the rule can safely be rescinded.

SCAN HERE



STUDENTS' REPRESENTATIVE COUNCIL (SRC) 2021/2022

The SRC is the highest representative student structure at the University and is under the authority of the University Council. The core functions of the Students' Representative Council include to act in the best interest of students and to actively promote students' rights. During the welcoming and registration period the SRC assists students in the following manners:

- We facilitate and provide transport for newcomers to our campuses where needed.
- We assist students with various problems they may face during registration by being accessible on our campuses and in our office. This includes assistance in dealing with administrative staff for a smoother registration.
- With the cooperation of the AAC, we assist students who are academically excluded with appeals for readmissions.
- We support students who are unable to either pay the initial registration fee or who have study debt so that they can register (RegisterAll).

- With the assistance of societies, we assist students who have not been placed in residences and are struggling to find accommodation with temporary accommodation during the welcoming period (Right2Learn).

We are excited to meet all our future maties during welcoming and will make an effort to greet all of you at your respective communities!

Please contact us at any time with concerns or problems you might face during this period:

EMAIL: sr@sun.ac.za
TEL: 021 808 2757
OFFICE: Thrid Floor, Neelsie Student Centre
INSTAGRAM: @stellenbosch_src
FACEBOOK: @srcinnovate
TWITTER: @stelliesSRC

MEET THE SRC 2021/2022

SRC



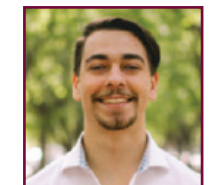
VIWE KOBOKANA
SRC Chair



PHILIP VISAGE
SRC Vice-Chair



ALYSA-ABBY KEKANA
Secretary General
& Financial Access



ILAN MEINTJIES
Treasurer



ZANDER NIEMAND
Transformation Officer



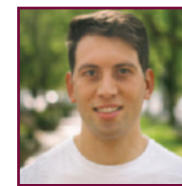
TAKADIWA CHIPFUMBO
SU International



CHRIS BRIEL
Student Wellness



PRECIOUS NHAMO
Social-Impact
& Innovation



EUGENE NELL
Senior Prim Committee Chair
& Postgraduates



TONI SOLOMON
Prim Committee Chair



CHRISTO VAN DER BANK
Prim Committee
Vice-Chair



GEORGE VAN DYK
Academic Affairs
Council Chair



TAMARA WICOMB
Society Council Chair



PULE LEBAKA
MASC Chair



GERRARD DAMONS
KUKO Chair



VHUDI RAVHUTSI
TSR Chair



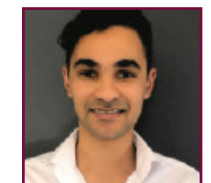
ANNA PANSEGROUW
Special Needs Manager



WANDILE SEBOTHOMA
Branding Manager



JOSIAH AIYER
Marketing Manager



ALEX VINK
WAQE Manager



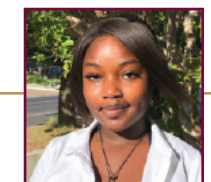
FADEELAH WILLIAMS
Leadership Development
Manager



TESSA BROOKE
Sustainability Manager



THIMNA SOTYATO
Safety & Security
Manager



TANYARADZWA CHIZA
Sports Manager



TYGERBERG STUDENT REPRESENTATIVE COUNCIL (TSRC)

The Tygerberg Student Representative Council is the highest representative and policymaking student body at the Faculty of Medicine and Health Sciences. The core functions of the TSRC are to act in the best interest of the students by actively promoting the students' rights highlighted in the bill of rights of our constitution and represent the students at different levels of the Faculty and the University.

For the term 2021/2022, we envision to be an intentional and proactive student body that approaches issues with a collaborative and solution-based mindset to holistically foster an empowering and transformative student experience.

To achieve this, we will strive to:

- Prioritise **Visibility** and accessibility, **Inclusion**, **Sustainability**, **Innovation**, **accountability** and **transformation [VISION]**.
- Formulate and critically engage on policies that govern the Tygerberg Student Union.
- Foster transparency by utilising effective communication channels.
- Employ a practical and multifaceted approach to enhance holistic student wellness.

During the welcoming and registration period the TSRC functions in the following roles:

- The TSRC, the Tygerberg Academic Affairs Council (TAAC), the Tygerberg Societies Council (TSC) and the Tygerberg Prim Committee (TPC) collaborate throughout the welcoming programme to ensure that all students are well informed and supported leading up to the first academic day.

- The TSRC and the TAAC, assist students who are academically excluded and those who are awaiting appeal notification during January.
- The TSRC supports all students who are unable to either pay the initial residence fee or who have historical debt and cannot afford to register for the academic year. This is done by liaising with the SRC on Stellenbosch Campus who head the *RegisterAll* project.
- The TSRC and the TPC ensure that students who have not been placed in residences and are struggling to find accommodation will be given temporary accommodation during the welcoming period.

With that said, please be on the lookout for how you can get involved with the TSRC in strife of impacting the Tygerberg Student Union in a positive and a dynamic manner.

If you would like to get in touch with the TSRC, you can do so via the following channels

EMAIL: tsrchair@sun.ac.za
TEL: 021 913 1921 / 021 938 9591
INSTAGRAM: @maties_tsr
FACEBOOK: Tygerberg Student Council



TYGERBERG STUDENT REPRESENTATIVE COUNCIL (TSR) 2021/2022

TSRC



VHUDI RAVHUTSI
Chairperson
Committee: Council/SRC
 tsrchair@sun.ac.za



QUERAN KAMUANYA KALOMBO
Vice Chair
Committee: Council
 tsrvice@sun.ac.za



VANESSA ANNAN
Secretary
Committee: Council
 22721851@sun.ac.za



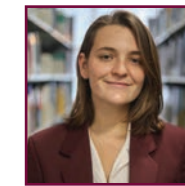
ZANELE NXAMAGELE
Financial Manager
Committee: Council
 22570578@sun.ac.za



ANANDI DE WITT
Student Community Needs
Committee: Council
 22006737@sun.ac.za



KEATON HARRIS
Student Facility Needs and Policy Unit Chair
Committee: Council
 kharris@sun.ac.za



CATHERINE BERN
Student Wellness
Committee: Council
 20691955@sun.ac.za



ZAH'RAA MOIDIN
Student Development
Committee: Council
 21940231@sun.ac.za



WANDILE MOKHELE
Sports
Committee: Council
 22706968@sun.ac.za



JESSICA DAVIES
Tygerberg Academic Affairs Council Chair
Committee: Council/TAAC
 tabrchair@sun.ac.za



JAMIE-LEE DANIELS
Tygerberg Prim Committee Chair
Committee: Council/TPC
 21606080@sun.ac.za



MARIZANNE VAN DYK
Tygerberg Societies Council Chair
Committee: Council/TSC
 tscchair@sun.ac.za



FRANCIS ADU-AMANKWAAH
Tygerberg Postgraduate Student Council Chair
Committee: Council/TPSC
 mbali@sun.ac.za



ANELE MADIYA
Culture
Committee: Council
 22599886@sun.ac.za



ISABELLA TURNER
Green and Sustainability
Committee: Council
 22904131@sun.ac.za



ASIPHESANDE JULEKA
Kopano and Prestige
Committee: Council
 21605602@sun.ac.za

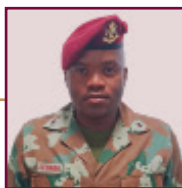


KIM STOFFELS
Social Justice
Committee: Council
 24048437@sun.ac.za



CHERESE DE KLERK
Strategic Communication
Committee: Council
 21055475@sun.ac.za

MILITARY ACADEMY STUDENT COUNCIL (MASC)



PULE LEBAKA
Student Captain



KIRSTEN RICHARDS
Vice-Student Captain



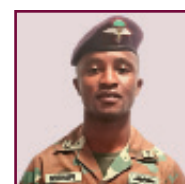
ZENITH GOVENDER
Secretary



ROXANNE WILLIAMSON
Faculty



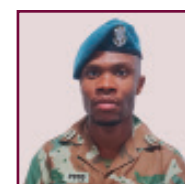
PALESA MOKGATLA
Finance



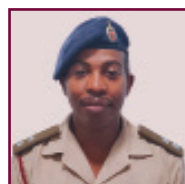
KARABO MOHAPI
Regimental Aspects Officer



**KEARABETSWÉ
MALEBANA**
Masiza



JOHN POTO
Sports



DUNCAN HEINS
DSSC



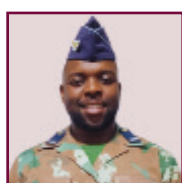
SHADRACH HENDRICKS
Transport



**BONOLO
MATHEBULA**
Social



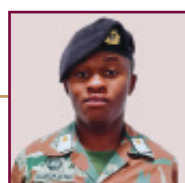
NTLHAKÉ POOE
Media



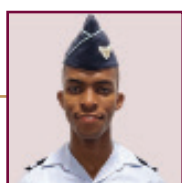
ALVIN ZWANE
Signal



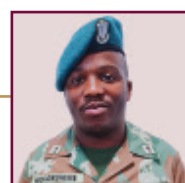
**CHARMAINE
MMOLA**
Logistics



**LEHLOHONOLO
RAMOKOENA**
Trans-enduro



SIYABUSA MHAMBI
3rd Year Commander



**DAVID
MOLOKOMME**
2nd Year Commander

TYGERBERG ACADEMIC AFFAIRS COUNCIL (TAAC)

The TAAC is a committee on the Tygerberg Campus, made up of elected class representatives from all six Health Sciences degree programmes. The TAAC represents the academic interests of the Tygerberg Student Union in the relevant faculty structures and committees. The committee is made up of an executive committee (Chair, Vice-Chair and Student Programme Coordinators), a committee of class representatives and five ex-officio members. The Chairperson and Vice-Chairperson sit on the Academic Affairs Council (AAC), on the Stellenbosch Campus and the Chairperson sits on the Tygerberg Student Representative's Council (TSR) on the Tygerberg Campus. Your academic interests are represented by your elected class representative, who sits on the TAAC Committee.

If you have any academic-related queries, you are welcome to contact the chair, **JESS DAVIES**, at: tabrchair@sun.ac.za or [20688016@sun.ac.za](tel:20688016).

ACADEMIC AFFAIRS COUNCIL (AAC)

The primary responsibility of the AAC is to represent and protect your academic affairs and development as a student. This includes:

- Academic complaints
- Language Policy Grievances, for example academic offerings in the classroom, course framework, etc
- HEMIS
- Test or timetable clashes
- Plagiarism issues
- Problems with lecturers, mentors, tutors or tut classes
- Co-curricular development

If you have any problems affecting your academics, please do not hesitate to get in touch with us.

Contact us or visit our social media pages for more details:

- Facebook: Stellenbosch University AAC
- Instagram: @aacstellies

Or send an email to the chairperson, George Van Dyk, at vandyk@sun.ac.za.

NAME	SURNAME	EMAIL	POSITION	GROUP
GEORGE	VAN DYK	vandyk@sun.ac.za	AAC Chairperson	AAC
SEBASTIAN	FOSTER	19984340@sun.ac.za	AAC Vice-Chairperson	
ELAINE	NYAMAYARO	21156751@sun.ac.za	AAC Treasurer	
JOHANÉ	BERRY	22564284@sun.ac.za	AAC Marketing Officer	
BERNARD	OOSTHUIZEN	22574514@sun.ac.za	AAC Secretary	
KARABO	MOGASHOA	21573034@sun.ac.za	EBSK Chairperson	Commerce
MIA	DE VILLIERS	22607994@sun.ac.za	EBSK Vice-Chairperson	
SANDRI	DU PLESSIS	19980779@sun.ac.za	ESC Chairperson	Engineering
ALMÉ	ENGELBRECHT	aengel@sun.ac.za	ESC Vice-Chairperson	
ALDI	SERFONTEIN	23570067@sun.ac.za	Theology Chairperson	Theology
SABRINA	SEPTEMBER	22605983@sun.ac.za	Theology Vice-Chairperson	
SKYE	DE PONTES	25362364@sun.ac.za	BASK Chairperson	Arts
OWETHU	MBELE	24867098@sun.ac.za	BASK Vice-Chairperson	
MPOYI	MPINGA	21592314@sun.ac.za	NSC Chairperson	Science
BENITA	SCHOONWINKEL	23577584@sun.ac.za	NSC Vice-Chairperson	
LIZE-MARI	SLABBER	22896228@sun.ac.za	OSK Chairperson	Education
EMMA	SWART	20950756@sun.ac.za	OSK Vice-Chairperson	
CECILE	BESTER	20899629@sun.ac.za	AgriSci Chairperson	AgriScience
ELZETTE	VAN SCHALKWYK	22736034@sun.ac.za	AgriSci Vice-Chairperson	
PULE	LEBAKA	24506184@sun.ac.za	Mil Acc Student Captain	Military Academy
ROXANNE	WILLIAMSON	20269048@sun.ac.za	Mil Acc Faculty Student Rep	
JESS	DAVIES	tabrchair@sun.ac.za	TAAC Chairperson	Tygerberg
KAY	VANWOLLEGHEM	19768028@sun.ac.za	TAAC Vice-Chairperson	
ILA	ALBERTS	25143654@sun.ac.za	JVS Chairperson	Law
MEG	JAMES	23266449@sun.ac.za	JVS Vice-Chairperson	

ACADEMIC AFFAIRS COUNCIL (AAC) 2021/2022

AAC



GEORGE VAN DYK
AAC Chairperson



SEBASTIAN FOSTER
AAC Vice-Chairperson



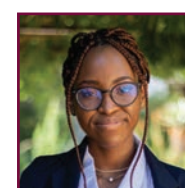
BERNARD OOSTHUIZEN
AAC Secretary-General



JOHANÉ BERRY
AAC Marketing Officer



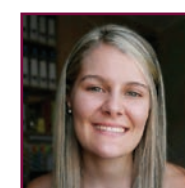
ELAINE NYAMAYARO
AAC Treasurer



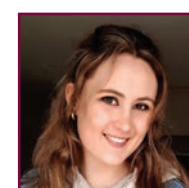
KARABO MOGASHOA
EBSK Chairperson



MIA DE VILLIERS
EBSK Vice-Chairperson



SANDRI DU PLESSIS
ESC Chairperson



ALMÉ ENGELBRECHT
ESC Vice-Chairperson



ALDI SERFONTEIN
TSC Chairperson



SABRINA SEPTEMBER
TSC Vice-Chairperson



SKYE DE PONTES
BASC Chairperson



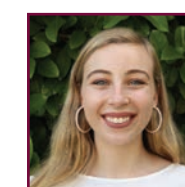
OWETHU MBELE
BASC Vice-Chairperson



MPOZI MPINGA
NSC Chairperson



BENITA SCHOONWINKEL
NSC Vice-Chairperson



LIZE-MARI SLABBER
OSK Chairperson



EMMA SWART
OSK Vice-Chairperson



CECILE BESTER
ASA Chairperson



ELZETTE VAN SCHALKWYK
ASA Vice-Chairperson



PULE LEBAKA
Mil Acc Student Captain



ROXANNE WILLIAMS
Mil Acc Faculty
Student Rep



JESS DAVIES
TAAC Chairperson



KAY VANWOLLEGHEM
TAAC Vice-Chairperson



ILA ALBERTS
JV/S Chairperson



MEG JAMES
JV/S Vice-Chairperson

TYGERBERG POSTGRADUATE STUDENT COUNCIL (TPSC) 2021/2022



FRANCIS ADU-AMANKWAAH
Chair



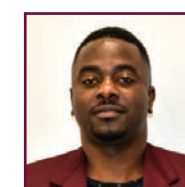
VANESSA LOUW
Vice-Chair



TSHIAMO MOTSOANE
Secretary



ARTHUR CHIWAYA
Financial Officer



KUDAKWASHE NYAMBO
Media and
Marketing Rep



ZAMA MAHLOBO
PhD Rep



HAMEER VANMALL
Masters Rep



NOTHUKELA MPAZI
Honours Rep



CANDICE FEBRUARIE
Student Health and Wellness



KIMBERLY COETZER
Student Development Rep



ILZE WILLEMSE
Community Interaction



ADEYEMI OLUWASEUN MOFOLUWA
Policy Unit Officer

NAME	EMAIL	NAME	EMAIL
FRANCIS	24133434@sun.ac.za	HAMEER	19975538@sun.ac.za
VANESSA	20768605@sun.ac.za	NOTHUKELA	23968737@sun.ac.za
TSHIAMO	tmotsoane@sun.ac.za	CANDICE	februariec@sun.ac.za
ARTHUR	achiwaya@sun.ac.za	KIMBERLY	kcoetzer@sun.ac.za
KUDAKWASHE	knyambo@sun.ac.za	ILZE	15171701@sun.ac.za
ZAMA	pzamah@sun.ac.za	ADEYEMI	24922315@sun.ac.za

**TYGERBERG PRIM COMMITTEE
(TPC) 2021/2022**

The Tygerberg Prim Committee functions parallel to the main campus Stellenbosch Prim Committee. It is comprised of all the Primis of the student communities at the Tygerberg Campus as well as the TPC chairperson and a secretary. The role of the TPC is to encourage collaboration between different student bodies, identify common challenges and collectively find solutions.

One of the points under the vision in the Prim Committee constitution is continuously taking needs of students in regard. During welcoming, the PC works together with the SRC and student communities to ensure try to ensure that newcomers can find accommodation while also having a fulfilling welcoming experience.

A few more goals of the Prim Committee as a whole are:

- For the members to function as a unit and each serve as a representative of their various Houses on the PC, as well as indirectly on the SRC and other SU bodies.
- To strive towards its vision of enriching the experiences of student life on campus.



**JAMIE-LEE
DANIELS**

TPC Chairperson



**NOMATHEMBA
NXABELA**

eNkanyini Residence
Primaria



NICOLA HAVENGA

Meerhof Primaria



CAITLIN SITHOLE

Huis Francie van Zijl Primaria



SARAH BASSA

Osler Primaria



**TSHEGOFATSO
MAHLANGU**

TPC Secretary

CENTRE FOR STUDENT COUNSELLING AND DEVELOPMENT



The Centre for Student Counselling and Development (CSCD) is committed to providing the Stellenbosch University (SU) community with psychological, developmental and support services in our quest to be partners for success. Our vision is to be a centre that is approachable, inclusive and client-centred, with our values based on shared humanity. The staff includes psychologists (clinical, counselling, educational), counsellors, social workers, psychology interns, student assistants, project/portfolio coordinators, a psychometrist, support officers and administrative staff. The CSCD consists of five units that through their core functions endeavour to promote citizenship by facilitating wellness, personal agency and sustainable equity. There are offices on Stellenbosch and Tygerberg Campuses.

Stellenbosch

37 Victoria Street, Stellenbosch
Tel: 021 808 4707 / 021 808 4994 (office hours)

Tygerberg

Second floor, Student Centre, Tygerberg
Tel: 021 938 9590 (office hours)
Website: www.sun.ac.za/cscd

24-hour emergency service in collaboration with ER24: 010 205 3032 (after hours and weekends)

The following Units are housed in five centrally situated buildings in Victoria Street, Stellenbosch:

**UNIT FOR ACADEMIC COUNSELLING
AND DEVELOPMENT (UACD)**

The Unit renders a development-directed service focusing on the academic challenges students may experience. The team comprises of educational psychologists, a psychometrist, a registered counsellor and intern psychologists. Support is provided to students with regards to study methods, coping with test and examination stress, time management and the optimisation of their potential by means of individual consultations, work sessions and self-help material. Career counselling for registered students are also available. You are welcome to send an email to studysuccess@sun.ac.za to make an individual appointment or to enquire about our work sessions.

**UNIT FOR PSYCHOTHERAPEUTIC AND SUPPORT SERVICES
(UPSS)**

The Unit offers individual, group therapy and work sessions. Confidential and professional services are offered by psychologists and registered counsellors. The Unit offers psychotherapy for a broad spectrum of problems that students experience, namely: depression, high stress levels, adjustment problems, substance abuse, relationship or family problems, etc.

The unit has implemented screening sessions to facilitate students who are experiencing psychological challenges. This service is offered daily from 11:00 to 12:30.

A 24-hour emergency service is also available for registered students from 16:00 to 08:00 as well as during weekends (ER24 010 205 3032).

Social Services (Social Worker) in collaboration with the Centre for Student Communities offer a walk-in programme that assist mainly first-year students who live outside of the Western Cape Province and arrive on campus with no confirmed accommodation and provide financial aid advice during the welcoming period. During the academic year, the social worker provides professional services such as support, guidance and counselling to students with respect to their social issues.

To request any services students must send an email to supportus@sun.ac.za. They will then be given an appointment. The appointments for all services can take the form of face to face or online.

DISABILITY UNIT (DU)

The Disability Unit offers a range of services to students with disabilities. We advise prospective students with disabilities about the possible support once at SU. We also discuss appropriate academic support solutions and ensure that academic material is accessible for study, test and exam purposes. The DU also offers students and staff various training opportunities. These include learning basic sign language for staff and students, an accredited Lead with Disability programme for students and facilitating staff training through the Siyakhula training sessions. Come chat to us about further disability-related uncertainties. Contact us at disability@sun.ac.za. Follow us on the Student Affairs Facebook page as well as Twitter at @sudisabilityupdate. Visit us at 39 Victoria Street, House Simon Nkoli Huis, Stellenbosch.

UNIT FOR GRADUAND CAREER SERVICES (UGCS)

The Unit supports students with the transition from education to employment. This could include individual sessions about your career, work sessions on CV writing, interview skills, your online profile and exposure to network opportunities with companies via career fairs and assistance with job-searching methods. All our core services are offered online.

The Unit manages an online career services management system called MatiesCareers (bit.ly/MatiesCareers) which gives students easy access to search for jobs and apply for vacancies, internships, part-time jobs and volunteer jobs. All SU students are strongly encouraged to register on the system. It is important for students to start preparing for their transition to the world of work from their first year already. MatiesCareers provides information about the Unit's services and interesting activities happening on campus. It also affords students the opportunity to register online for the Unit's services. Several employers are registered on the platform. This means that students can also upload their CVs to potential employers and search for employer's information and work opportunities. MatiesCareers allows students to stay abreast of the Unit's operations and the world of work 24/7. Contact us via email at careerservices@sun.ac.za.



SCAN HERE

CAMPUS HEALTH SERVICES

Covid-19 Notice:

Stellenbosch University Campus Health Service continues to monitor the Coronavirus outbreak and assists the Rectorate's management team to manage adherence and health guidelines, in **accordance** with the National Department of Health. Due to this novel outbreak, health information is changing constantly.

During this period, all patients require an appointment to see the doctor or nurse.

The Stellenbosch University Campus Health Service (CHS) offers an integrated and accessible health service for students and staff and has an equipped dispensary for this service. CHS supports the wellness initiative for students and staff and are provided at the Stellenbosch and Tygerberg Campuses.

The services at CHS include:

- Family medicine (including primary care)
- Health promotion and preventative medicine
- Travel medicine
- Sport and exercise medicine
- Occupational health
- Physiotherapy

Quick questions about CHS:

Is this service free?

Services delivered by our medical doctors and physiotherapists are charged at the minimum ethical tariff. All consultations delivered by our professional nurses are free of charge. A fee is charged at medical aid tariffs for medication.

How are services paid for?

We are a registered provider of all medical aids in South Africa and Namibia and all accounts are sent electronically. We accept cash, card and electronic payments as well. Medical aid rates apply.

Does CHS cover all medical services (e.g. x-rays and dentistry)?

We have professional medical doctors, physiotherapists and nurse practitioners. All other services are referred.

Must I be immunised?

Being up to date with all vaccinations is an important consideration for all students (especially first years living in residences). The following vaccinations are all optional, but highly recommended:

- Influenza (flu) – annual vaccination
 - Meningitis – one injection every 3 years
 - Measles, Mumps and Rubella (German Measles) – if non-immune, series of 2 vaccines, 1 year apart
 - Hepatitis A and B – **compulsory for Medicine and Health Sciences students** – combination (Twinrix) available, series of 3 vaccines over 6 months
 - Human Papilloma Virus – series of 3 vaccines over 6 months
- All vaccines are available at CHS and prices are available upon request. Please check with your medical aid if they pay for vaccinations.

Does CHS offer counselling?

We offer counselling to patients who come for specific screenings/ tests e.g. HIV testing and family planning. Other counselling is given by the Centre for Student Counselling and Development (CSCD). Their contact number is 021 808 4707.

Is patient transport available?

We offer transport to patients in the confines of the campus. The patient can contact the Campus Health Service directly.

How do I make an appointment?

Appointments can be made by contacting us on the numbers below or sending us an email on chs@sun.ac.za.

What if I have an emergency?

During office hours you can contact CHS. Alternatively use the contact numbers below.

DURING OFFICE HOURS:

CHS emergency number: 076 431 0305

AFTER HOURS OR WEEKENDS:

ER24 emergency number: 010 205 3032
 Stellenbosch Mediclinic: 021 886 9999/021 861 2000
 SU 24-hour crisis line: 082 557 0880
 Contraception helpline: 0800 246 432
 HIV helpline: 0860 HIV 911

FOR MORE INFORMATION:

Website: www.sun.ac.za/english/CampusHealth
 Facebook: www.facebook.com/Stellenbosch.University.CHS
 Twitter: @CHS_StellUni

ALL OUR PRACTICES ARE OPEN FROM MONDAY TO FRIDAY BETWEEN 08:00 AND 17:00.

PHYSIOTHERAPISTS:

Tel: 021 808 3392
 Next to the gymnasium in the Sport Science Building
(no 84 on the map)

STELLENBOSCH PRACTICE:

Tel: 021 808 3496/3494
 7 Claassen Street, Stellenbosch *(no 16 on the map)*

TYGERBERG PRACTICE:

Tel: 021 938 9590
 Third floor, Tygerberg Student Centre *(no 10 on the map)*



SCAN HERE

LANGUAGES OF TUITION AT STELLENBOSCH UNIVERSITY

At Stellenbosch University, we engage with knowledge in a diverse society. Our Language Policy is one of the mechanisms that supports the creation of a diverse campus community. Through the policy, we can increase equitable access; promote multilingualism and the appreciation thereof, and facilitate pedagogically sound learning and teaching. Without losing sight of the fact that SU also serves continental and global communities, we commit ourselves to multilingualism by using the three official languages of the Western Cape, namely Afrikaans, English and isiXhosa.

In December 2021, the SU Council approved a new Language Policy after a comprehensive consultative process. The purpose of our language policy is to regulate, manage and govern language use in all aspects of our institution. The three foundational principles of the new policy determine that SU regards multilingualism as a resource; that language should broaden access and enhance your success; and that the policy and its implementation should facilitate pedagogically sound learning and teaching.

MULTILINGUALISM AS A MINDSET

At SU, multilingualism does not just refer to institutional and individual multilingualism, but also to multilingualism as a way to promote inclusivity and awareness of diversity. It extends beyond creating spaces and structures to use multiple languages in academic, administrative and social contexts or individuals' willingness to learn multiple languages. Multilingualism also reflects an attitude, or mindset, that we would like to foster at our institution. As a new Matie student, you will have the opportunity to adopt this mindset and join the campus community in promoting multilingualism.

You will see how we put this mindset into practice across the institution. At ceremonial occasions, such as the welcoming event for first-year students and graduation ceremonies, Afrikaans, English and isiXhosa will be used. At meetings and social gatherings translanguageing* will occur spontaneously with mutual respect and tolerance for varying language proficiencies or where an individual is eager to learn additional languages. In the lecture hall, lecturers, lecturing assistants, interpreters and you as students take co-responsibility for multilingualism by assisting each other to understand academic content. While it is important to create spaces for you to engage informally via translanguageing in the classroom, there are also pedagogical reasons for using the academic and technical terminology at a higher education institution.

WHAT CAN YOU EXPECT?

You may be wondering what the impact of the new Language Policy will be on your academic life and language usage in social spaces. Comprehensive information, including the Language Policy and an infographic, is provided on the language policy webpage (www.sun.ac.za/language). The infographic summarises the practical implications of the policy in a visual format, but the Language Policy itself remains the only formal source of information.

Language Policy 2021 in a nutshell:

UNDERGRADUATE LEARNING AND TEACHING

1. Academic modules are offered in one of the following language options:

- Separate lectures in Afrikaans and English (A/E) Although lectures would be in either English or Afrikaans, group work, practical sessions and tutorials will combine students from various language groups. One-on-one consultations with lecturers can be conducted in Afrikaans

- and English, provided that the lecturer is proficient in both these languages.
- Both Afrikaans and English are used in the same lecture (A+E) In these lectures, all information is shared in English with summaries in Afrikaans. For first-year students, simultaneous interpreting will be available either on-site or online. Questions will be answered in the language of the question, depending on the language proficiency of the lecturer.
- One language only (A/E/X) Lectures can be in English or one of the other two languages, provided that the lecturer and all the students in the group are academically proficient in the language being used. Where possible, simultaneous interpreting in Afrikaans, English or isiXhosa may be offered online or on-site. Other learning opportunities (consultations and tutorials) are conducted in Afrikaans and English, provided that the lecturer is proficient in both these languages.

Each faculty has to submit a language implementation plan for the following academic year for approval by Senate. Once approved, the faculty must publish its plan on the faculty website. The plan indicates which one of the above three language options will be applied to each module. Visit your faculty's website to view the language options relevant for each of your modules.

2. Learning material:

- All prescribed reading material will be available in English
- Prescribed reading material (excluding published material) will be available in Afrikaans where reasonably practicable.**
- Module frameworks and study guides will be available in Afrikaans and English.
- Where reasonably practicable** and where a pedagogical need exists, isiXhosa and other languages may be used to reinforce concepts.

3. Assessments and question papers:

Assessments and questions papers are made available in Afrikaans and English, and students may complete these in either English or Afrikaans.

POSTGRADUATE LEARNING AND TEACHING

- Lectures can be in English or one of the other two languages, provided that the lecturer and all the students in the group are academically proficient in the language being used.
- Postgraduate assessments and question papers will be available in at least English and should then be completed in English unless special arrangements.

STUDENT COMMUNITIES

In student communities, such as residences and Private Student Organisation (PSO) wards, language must be used to ensure that everyone is included and can participate. During the annual welcoming period in January/February 2022, you should understand all the information shared to help you settle into campus life. The multilingual mindset of respect and tolerance for multiple cultures and languages is particularly important in these spaces. Student communities are also required to submit language implementation plans and report on their compliance.

LANGUAGE CENTRE OFFERS SUPPORT

Stellenbosch University's Language Centre provides a variety of language support services: reading and writing development; language services that include translation, interpreting and editing; and research on language and language use. The centre also offers modules in professional communication, academic literacies, and language acquisition for Afrikaans, English, isiXhosa and South African sign language. Please visit the Language Centre's website to see what it has to offer that can assist you on your academic journey.

LANGUAGE PLANNING AND COMPLAINTS

Our Language Policy 2021 sets the scene for an inclusive and diverse academic community that reflects our South African society's richness and provides the umbrella for language usage at SU. The policy cannot guarantee perfect implementation: Changes or errors will inevitably occur, but these can be managed effectively.

Faculties must submit language implementation plans and report on compliance according to a regular annual schedule. Any changes outside this timeline have to be consulted within the faculty and reported at the next faculty board and Senate meetings. The faculty will inform students affected by these changes as soon as practically possible.

In student communities, complaints regarding non-compliance with the Language Policy 2021 can be submitted to the house committee or residence head. If the matter cannot be resolved at the residence or PSO level, complaints can be referred to the Director: Centre for Student Communities, or be escalated to the Senior Director: Student Affairs. You may submit complaints related to non-compliance in the academic environment via your faculty's complaints procedure, the relevant staff members, and the departmental head, or it may be escalated to the dean. If these structures are unsuitable, complaints may be submitted to the **SU Ombud** for settlement in consultation with the relevant structures.

Please refer to the **Language Policy Revision webpage** if you have any questions about the 2021 Language Policy: www.sun.ac.za/english/Pages/Language.aspx.

** Translanguageing is an umbrella term for a context in which multilingual persons use the linguistic resources at their disposal to engage with one another and with texts to create meaning. In a classroom context, the purpose is to deepen learning using a variety of strategies, including (but not limited to) code-switching, translation practices, co-languageing and interpreting, without any attempt to limit communication or engagement with text to one language or variety of a language.*

*** The Language Policy and its implementation are informed by what is **reasonably practicable**. In practice, this means that each situation will be considered on its merit and factors such as the number of students that will benefit from an arrangement; the language proficiency of staff and students; and the University's resource, timetable and venue constraints. Other determining factors include the composition of each class group that also changes from year to year, or even from one semester to another, and unexpected staff changes.*



YOUR JOURNEY TO ACADEMIC SUCCESS STARTS HERE



The welcoming period is the start of your journey to academic success. This learning journey continues for as long as you study at Stellenbosch University (SU). In the welcoming week already, you start to integrate the various parts of your life at SU, and you will learn that the residences, PSO wards and clusters are value-driven environments characterised by hospitality, friendliness and dignity.

As newcomer student, you enter a phase of rapid development. Remember, your social and emotional adjustment to the university experience constitutes an integral part of your learning journey and personal development. In particular, keep the following in mind: A newcomer's experiences is a period of intense change, during which 'familiar' attitudes, values and behaviour patterns are often adjusted and developed. This also facilitates the development of challenging and inspiring thought patterns. (Research shows that you and your fellow newcomers are more susceptible to change during the welcoming period than in any other stage of your university careers.)

Your introduction to social and community structures during the welcoming week is important. These include structures such as clusters, residences, PSO wards, mentor groups, faculties (such as study and tutor groups), sport clubs and societies.

Role models who live by the University's values and achieve success on their learning journeys may be of great value to you.

As part of the welcoming programme, it is extremely important for you to adhere carefully and timeously to the administrative and academic requirements of your faculty. This will ensure that you are ready for the commencement of the academic part of your learning journey on the very first day of class.

The two most important development phases of a newcomer's learning journey are:

- Coping with freedom (when and how to say no); and
- Negotiating on your own behalf.

Start with these in the welcoming week already. Measure everything in the welcoming programme against the following questions, and ask yourself how the various aspects of the welcoming programme fit into the bigger picture.

Ask yourself the following questions on every activity in which you participate during the welcoming week. (Remember, this includes everything, even your own decision sometimes not to participate in activities.)

- How does this promote my journey to successful studies (learning journey)?
- Does it introduce me, as a newcomer student, to positive social relations/groups?
- Does it contribute to emotional stability and emotional development?
- Does it help me to join sound listening, living and learning communities, and encourage me to participate both independently and interdependently?
- Does it create a relaxed, safe and constructive listening, living and learning space, where I can get clarity on the nature, content, choice and form of my learning journey?

STUDENTS WITH DISABILITIES

INFORMATION SESSION FOR STUDENTS WITH DISABILITIES AND THEIR PARENTS

Students who have diagnosed disabilities that may need support or concessions such as extra writing time are invited to attend this information session to determine what support is available at the University during their studies. This **excludes information regarding** the National Benchmarking Tests (contact www.nbt.ac.za or 021 650 3523).

STELLENBOSCH STUDENTS AND THEIR PARENTS

DATE: Thursday 3 February 2022
10:00 to 15:00 (walk-in-session)

VENUE: Room 357 (Third floor), Arts and Social Sciences Building, corner of Merriman Avenue and Ryneveld Street – **for students with visual and learning impairments who needs alternative text formats and have assistive technology enquiries.**

TEST AND EXAM CONCESSIONS (STELLENBOSCH AND TYGERBERG CAMPUS)

DUE DATES:
The due dates for applications for concessions such as extra writing time for tests and exam inations are:
28 February; 29 April; 15 August and 3 October
(Expect a response within 10 workdays after each due date.)

APPLICATION FORMS:
Application forms are available at
<http://www.sun.ac.za/english/students/Pages/Tests-and-Exams.aspx> under exam and test information.
Send completed Form 1, 2 and 3 to skryftyd@sun.ac.za

ENQUIRIES:
Stellenbosch Campus Examination Office, Admin A
(no 1 on the map), tel 021 808 9111.
Tygerberg Campus Examination Office, Ms Pumeza Soga,
tel 021 938 9309, Room 1050, Clinical Building (no 3 on the map).

EQUALITY UNIT (EQU)

The Equality Unit (EqU), housed in Huis Simon Nkoli House, takes its inspiration from the South African Bill of Rights where no person should be unfairly discriminated. The core function of the Unit is to assist students and staff who have been victimised, sexually harassed, unfairly discriminated, and who have been victims of gender-based violence through a confidential complaint (formal or informal) procedure.

The EqU also provides services, training and interventions on gender non-violence. It also provides free sexual health information, services and support to students. The EqU also provides services, training and interventions on gender non-violence. It also provides free sexual health information, services and support to students. This includes HIV testing, counselling and ongoing support and distributing free safe sex materials such as internal and external condoms and lube. Support and services are also available to students of the LGBTQIA+ community and anyone who would like support regarding their sexuality or gender identity.

The Unit urges students to come forward if you have experienced forms of unfair discrimination, harassment or victimisation. Empathy, procedural fairness and confidentiality are the cornerstones of our work.

EMAIL: unfair@sun.ac.za (to report unfair discrimination or harassment)

hiv@sun.ac.za (for HIV and LGBTQIA+ related matters)

TEL: 021 808 3136

WEBSITE: www.sun.ac.za/english/learning-teaching/equalityunit

FACEBOOK, INSTAGRAM, TWITTER: @EqualityUnitSU

ADDRESS: Huis Simon Nkoli House, 39 Victoria Street, Stellenbosch

HAVE YOU BEEN HARASSED OR UNFAIRLY DISCRIMINATED?

If any student has been discriminated or harassed because of race, gender, health, sexual orientation, ethnic and social origin, age, religion, disability, culture, language or belief, there is recourse.

Students can confidentially, informally and/or formally report incidents of unfair discrimination or harassment to one of the Equality Unit's Case Officers. These are the complaint procedure steps:

1. Contact one of the EqU Case Officers via email at unfair@sun.ac.za to report and set-up a meeting.
2. The Case Officer will assist you with completing an assessment form and also refer you to a qualified counsellor who will help you through the difficulty of the incident.
3. After meeting a Case Officer, additional interviews will be conducted with affected parties, witnesses and the respondent/s.
4. Once all the information is gathered, the EqU team will make recommendations to the complainant and respondent.
5. Recommendations can include mediation, referral to the Office of Student Discipline or a department within SU, Human Resources, or the EqU will take the matter to a panel of inquiry for further deliberation.



HUMAN RIGHTS, STELLENBOSCH UNIVERSITY'S VALUES, AND DISCIPLINARY CODE FOR STUDENTS

Stellenbosch University (SU) welcomes open dialogue and wishes to encourage a culture of frank debate on our campuses. Engagement and dialogue should be integrated into all aspects of campus life: in class discussions, over a cup of coffee in student hubs, all clusters and in living areas. Students should think critically about the challenges and issues of our society. This is how thought leadership is developed – an important attribute of our graduates.

DISCIPLINARY CODE FOR STUDENTS

When signing the SU application form, students undertake to familiarise themselves with all the rules, regulations, policies, prescriptions and the Disciplinary Code for Students. Should a student be charged with transgressing any of these, he or she cannot plead ignorance as a defence.

The Disciplinary Code for students states that an individual is guilty of misconduct when, among other things, he/she wrongfully violates another person's fundamental rights as set out in the Bill of Rights, chapter 2 of the Constitution, 1996, or acts in conflict with any other South African laws or SU rules, regulations or prescripts. This includes hate speech, sexual harassment, victimisation, violence or incitement, unacceptable or improper behaviour, the humiliation of fellow students or staff, and assault. Thus, use your own good judgment and act responsibly, especially when using the social media. **Please familiarise yourself with the notice regarding the use of social media.**

Although legislation, policies, guidelines and codes are necessary to ensure order in society, SU strives to create a welcoming campus culture through shared values.

HOW TO REPORT ISSUES OR COMPLAINTS

Students are encouraged to use the various internal processes and systems to report issues, complaints or grievances. The Academic Affairs Council (AAC), a body of the Students' Representative Council, has student representatives in each faculty, and in the social context, the clusters and student residences have student leaders who can support students. Students can also approach the Division Student Affairs at studentaffairs@sun.ac.za.

Should a matter not be satisfactorily resolved via internal processes or systems, students can use the following reporting mechanisms:

• Ombud

SU has an independent ombud who looks into the problems and complaints of students, parents or staff when these cannot be satisfactorily resolved through university structures or where existing structures are found lacking.

ombud@sun.ac.za

Contact number: 082 807 2994 or 021 883 9128

Office address: 34 Ryneveld Street, Ryneveld Plaza, Stellenbosch

For appointments: Email Grace Bruintjies at graceb@sun.ac.za

• Ethics helpline

For some years, SU has subscribed to an independent ethics reporting service for the anonymous reporting of irregularities. This service is independently managed by **Deloitte**.

Tel: 0800 204 549

Fax: 0800 007 788.

Email: sun@ethics-line.com

Web: www.tip-offs.com

• Equality Unit

Incidents of unfair discrimination, victimisation, sexual harassment and other forms of harassment can be reported to the Equality Unit at unfair@sun.ac.za. Please take note of the Policy on Unfair Discrimination and Harassment.

SU'S VALUES

COMPASSION

Recognition of and care for the well-being of all our students and staff

EQUITY

Restitution in response to our past legacy and fairness in our aspirations

RESPECT

Civility in our mutual and public discourse, due regard for the freedom, equality and dignity of all, and respect for the environment

ACCOUNTABILITY

Accepting the highest level of responsibility for our actions

EXCELLENCE

Academic freedom to pursue knowledge that adheres to the highest standards of integrity, innovations and relevance

IMPORTANT NOTICE REGARDING SOCIAL MEDIA

Stellenbosch University (SU) recognises the importance of the internet and social media¹ in shaping public thinking about our University and our services, students, staff and stakeholders. SU also recognises the importance of our students and staff engaging in and helping to stimulate conversation through interaction in social media. Students and staff are encouraged to interact online about SU matters and developments in higher education. However, it is important to understand that **the use of social media as a communication channel is subject to existing SU policies and procedures**, specifically the:

- Disciplinary Code for Students of Stellenbosch University (applicable to students)
- Policy on Unfair Discrimination and Harassment (applicable to staff and students)
- Electronic Communications Policy (applicable to staff and students)

All students and staff are responsible for their own compliance with these policies and should take the time to read and understand these. Behaviours such as misconduct, harassment and victimisation conducted online are addressed in these policies. Any form of online bullying, verbal abuse, defamation, slander and/or name-calling, among others, falls into the same category as face-to-face communication and written communication.

Allegations of online misconduct, harassment and victimisation are regarded just as seriously as similar actions through traditional verbal and written communication. An aggrieved party may report such behaviour (e.g. misconduct, harassment or victimisation through any of the social media channels) to the **Equality Unit**, which may refer matters to Student Discipline (for students) or Human Resources (for staff) as necessary.

The Equality Unit's contact details are:

- unfair@sun.ac.za
- 021 808 3136
- 39 Victoria Street, Stellenbosch

The Corporate Communication Division is developing a comprehensive Social Media Policy but until the policy has been completed, the rules in existing policies and this notice will apply.



INSURANCE: STUDENTS AND THEIR PROPERTY

"A safe campus for all." – These words give expression to a core aspiration of Stellenbosch University (SU). Not only does SU conduct a continuous campaign to make staff, students and visitors aware of potential risks that may threaten their safety and/or health, but where necessary, Risk Management and Campus Security is made use of, as well as the South African Police Service, to continually enforce and monitor security measures.

Students participate in academic trips, laboratory experiments, sport and other voluntary activities where they can be exposed to risks. The University takes all reasonable measures to protect students and their property when they participate in these activities and during their daily campus life.

It is however impossible to eliminate all risks. Since it is not possible for the University to protect students and their property against all risks, students therefore participate in all University related activities on their own risk.

The University has insurance cover against injuries you might sustain while you engage in activities related to your studies. This cover includes activities on campus, in our laboratories, and on field trips. If you have a claim, you must inform the university immediately. You must also complete the insurance claim form as soon as possible. The University is not liable for any claims that are not covered by this insurance.

The University would like to draw attention to the fact that each student is responsible for his/her own insurance and therefore recommends that he/she takes out sufficient comprehensive insurance for his/her personal possessions.

FREE WRITING ADVICE

Do you need a bit of extra help with your writing assignments?

Do you sometimes struggle with particular writing issues?

The Writing Lab of the University's Language Centre offers a free one-on-one consultation service to all SU students and staff. Friendly, trained writing consultants will assist any student who would like advice on or assistance with any writing assignment. If you struggle to get started on assignments or worry that your ideas are not clear and do not flow well, you will get guidance at the Writing Lab. We will support you as you improve and sharpen your writing skills, and your improved skills should definitely lead to better marks.

A consultation is 50 minutes long, but we encourage you to come for follow-up consultations until you are satisfied with your writing.

We do not do editing at the Writing Lab. We advise you on how to improve your texts. Our aim is to equip you as a writer with writing skills which you can use in other writing tasks at University and beyond.

Book your consultation online through KENAKO, the Writing Lab's electronic booking system, on the My.SUN portal or visit the Writing Lab at the Language Centre, 44 Banghoek Road. Appointments need to be made at least 48 hours in advance.

Contact details

Anne-Mari Lackay: amlackay@sun.ac.za

Vinelen Hartley: vhartley@sun.ac.za

021 808 2989/2161

Visit our website for more information on other services offered by the Language Centre (www.sun.ac.za/languagecentre).

STELLENBOSCH UNIVERSITY'S CO-CURRICULAR SUPPORT FUND (SUCSF)

STELLENBOSCH UNIVERSITY'S CO-CURRICULAR SUPPORT FUND

Stellenbosch University's Co-Curricular Support Fund (SUCSF) is a student travel bursary fund for national and international co-curricular events, such as student leadership conferences and other opportunities that would benefit the student and our community.

AM I ELIGIBLE TO APPLY FOR FUNDING?

- Does the event have a co-curricular theme?
- Will I graduate within the minimum time of my programme, plus one year?
- If this is my first year at SU, have I successfully completed my first semester?

WHAT CAN I USE THE FUND FOR?

- Airfare
- Visa fees
- Conference fees
- Accommodation
- Transfers

Applications are considered at the discretion of the SUCSF committee, according to the prevailing Covid-19 regulations and possible risks.

Visit www.sun.ac.za/sucsf for more information.

WELCOMING AMBASSADORS

Students in yellow T-shirts will be situated at different points around central campus during the welcoming week to assist newcomer students and parents who need information and directions to the venues they are supposed to go to. The Welcoming Ambassadors are well informed about events and the location of venues regarding the welcoming programme. Please consult the Welcoming Ambassadors if you have any enquiries.

Also keep in mind that there is an Enquiry Desk in Admin A (located on the T junction of Ryneveld- and Crozier Street).

Enquiries can also be directed to Client Services.

Email enquiries info@sun.ac.za
Telephonic enquiries 021 808 9111
Walk in services Enquiries Desk in Admin A

SOCIETIES COUNCIL EXECUTIVE COMMITTEE



CHAIRPERSON
twicomb@sun.ac.za



VICE-CHAIRPERSON
20746202@sun.ac.za



CHIEF ADMINISTRATOR
21743339@sun.ac.za



FINANCIAL ADVISOR
24048437@sun.ac.za



REGISTRAR
21974616@sun.ac.za

FIND US HERE:

@SocietiesSU



PRE-REGISTRATION CLEARANCE (VERIFICATION) OF INTERNATIONAL DEGREE-SEEKING STUDENTS

DOCUMENTATION BEFORE ACADEMIC REGISTRATION 2022

1. SOUTH AFRICANS WITH FOREIGN SCHOOL QUALIFICATIONS (NEW INTAKE)

- Pre-registration clearance does not apply to these students.
- Students must send their certified copies of their final results to Ms Chantal Grove-Le Guillou at chantalg@sun.ac.za.

Please include your **SURNAME** and **SU STUDENT NUMBER** in the subject line of all email correspondence.

2. FIRST YEAR INTERNATIONAL UNDERGRADUATE STUDENTS (NEW INTAKE)

- First-year international undergraduate students do not need to apply for their matriculation exemption certificate prior to registration for the 2022 academic year. Applications for matriculation exemption will take place from September 2022.
- Please do an online assessment on the website of USAF at <https://mbit-application.usaf.ac.za/assessment/online-assessment/> to make sure you comply with matriculation exemption.
- Send a certified copy of your final results to suiundergrads@sun.ac.za before pre-registration can be finalised.

An email confirming that you do meet the exemption requirements will be sent to you. Please allow at least three to five working days response time.

3. PRE-REGISTRATION CLEARANCE FOR ALL INTERNATIONAL STUDENTS (UNDERGRADUATE & POSTGRADUATE)

- Before you can register for your academic programme of study, or enrol in any courses, you must be cleared by SU International through a process known as pre-registration.
- Pre-Registration clearance will commence via email as from Monday 3 January 2022.
- All international students including permanent resident holders, refugees and asylum seeker status students are required to provide copies of supporting documentation for pre-registration clearance prior to registering for the academic programme.

Send an email with the compulsory documentation to the following email addresses using your **SURNAME** and **SU STUDENT NUMBER** as a reference in the subject line

Stellenbosch Campus students: intpreregistration@sun.ac.za
Tygerberg Campus undergraduate students: tygselections@sun.ac.za / bdgeyer@sun.ac.za
Tygerberg Campus postgraduate students: intertyg@sun.ac.za

- **Copy** of valid passport
- **Copy** of valid study visa issued to study at Stellenbosch University
- **Proof** that you have **medical cover** with a South African medical aid for the full year (January to December 2022)
 Students are advised to view the list of Student Medical Cover Options on the following website: **SA MEDICAL COVER**
- **Proof** of minimum compulsory initial **fee payment or scholarship letter** as per 2022 Compulsory Fees Document

A confirmation email will be sent to you once pre-registration clearance has been finalized and you can then commence with online registration for your academic programme. Please allow at least three to five working days response time.

All international degree-seeking undergraduate first-year students: Follow the same welcoming programme as the SA students as per: <http://www.sun.ac.za/english/students/Pages/Registration.aspx>

Please include your **SURNAME** and **SU STUDENT NUMBER** in the subject line of all email correspondence to SU.

Please allow at least three working days response time.

LIBRARY

Library orientation is offered in the Stellenbosch University Library from 7-9 February 2022 to familiarise new students with the following aspects of the library:

- Meet your librarian
- First-years information on the library's website
- First-years assignments: "assignment step by step"

YOU COULD WIN A PRIZE IF YOU PARTICIPATE IN THE ORIENTATION PROGRAMME.

GetSmart @ URLibrary

Pop in at your convenience & GetSmart

Come and learn how to find **INFORMATION**

Kom leer hoe om **INLIGTING** te vind

14 - 18 Feb 2022
09:00 - 15:00

Stellenbosch University Library
Universiteit Stellenbosch Biblioteek

Stellenbosch UNIVERSITY
forward together
saam voretoe

Orientation programmes are also presented at the following libraries: Theology, Music, Engineering & Forestry and Medicine & Health Sciences. The orientation is followed up the next week with individual training under the title GetSmart@URLibrary.

We would like to invite all parents of first-year students to visit Stellenbosch University Library during welcoming to see the facilities and services available to Matie students. Visit our prestigious Africana room, see the Learning Commons and the E-classroom. Our E-collection include all subjects both national and international.

The Library is dedicated to support the academic endeavour of our students.

FACULTY PROGRAMMES INDICATE THE DATES AND TIMES OF LIBRARY VISITS!

Enquiries: Pieter du Plessis
Tel: 021 808 4882
Email: pdupless@sun.ac.za
Web: www.library.sun.ac.za

MATIES SPORT



YOU! YES, YOU!

Did you do sport at school? Are you considering joining a sport club at Stellenbosch University? Do it! We even offer an Esports league. And if sport isn't your thing, you can still be part of the Maroon Machine by becoming a #MatiesMVF (most valued fan). Like and follow us on Facebook, Twitter and Instagram and become part of the bigger Maties Sport family.

Maties Sport believes sport is a great contributor towards student success – regardless of whether you are a high-performance athlete or someone who just want to be active and healthy.

Participation in sport teaches self-discipline and time management and offers crucial outlets for stress and tension. Both competitive and recreational sport provide students with opportunities to socialise, develop friendships and maintain a healthy and balanced lifestyle. Maties Sport accepts co-responsibility for the optimal holistic development of student-athletes and the empowerment of high-performance athletes.

That is why Maties Sport invests in its high-performance sport codes as well as its recreation and active lifestyle programme – offering ALL students the opportunity to engage in a healthier and happier lifestyle.

Maties Sport has 30 sport clubs, making it easy to find a sport that suits your needs and skills level.

High performance sport codes are: rugby, hockey, netball, football, athletics, swimming, cricket, basketball and tennis. Competitive sport codes are: cycling, table tennis, squash, badminton, golf, gymnastics, rowing, canoeing, sailing, water polo, surfing, judo, equestrian, volleyball, fencing and chess. Recreation and active lifestyle sport codes are: equestrian club, underwater sport, volleyball, Ultimate (frisbee) and cheerleading. The Maties Parasport Club also offers athletics, swimming, cycling, wheelchair rugby and goal ball for people with disabilities.

You'll have the opportunity to participate in local as well as regional, national and even international competitions, such as:

- Varsity Cup, Varsity Sports, Intervarsity and USSA;
- Regional and local leagues;
- Residence leagues and competitions.

Only an elite few will be selected for a Varsity Cup, Varsity Sports or USSA teams, but that's no reason to stay at home. The spotlight falls as much on the fans as the players, with Maties Sport launching a drive to encourage #MatiesMVFs (most valued fans) to support their teams when they play at home.



BENEFIT FROM:

- The High Performance Sport Unit (<https://blogs.sun.ac.za/high-performance>). The focus falls mainly on three key areas: Sports medicine, performance enhancement and empowerment;
- The Recreation and Active Lifestyle Unit (RALU) which promotes physical wellness for staff and students and creates an environment where non-conventional sport and activities are enjoyed and played;
- The Centre for Sports Leadership;
- Maties Gymnasium.

DOWNLOAD:

- Get the Maties cellphone app and stay informed about events – especially sport events on campus.

CONTACT DETAILS:

Tel: 021 808 4642
Email: matiesport@sun.ac.za
Web: www.sun.ac.za/sport
Facebook: @SUMatiesSport
Twitter: @MatiesSport
Instagram: @MatiesSport



MATIES GYMNASIUM

Maties Gymnasium welcomes all 2022 Stellenbosch University (SU) students to Stellenbosch Campus. We sincerely hope that you and your loved ones are all safe and remain fit and healthy. All SU students receive a 15% discount on our normal gym fees. In addition, we offer various membership options ranging from 1 to 12 months, so you can select the package that is just right for you. All members of Maties Sport clubs will receive an additional 5% discount on their membership fees (*proof of sport club membership is required at sign-up*). Please see our website for more information or contact the gym directly at the contact details at the end of this newsletter for all the pricing options.

Unfortunately, it will no longer be possible to place your membership fees onto your student account, however, you can now purchase your membership online before the start of the academic year, by simply clicking on the following link (<https://matiesgym.sun.ac.za/signup/?sid=1>) or scanning the QR code:

SCAN HERE



Please enter your personal details as required, complete a quick Physical Activity Readiness Questionnaire, and select your contract duration (3, 6, 9 or 12 months). This way, you will beat the queues at the gym during February 2022 and secure your membership. All you need to do is scan your fingerprint at the gym on your first visit, for our state-of-the-art biometric access control system. Be one of the first 100 members to join for 2022 and you could win your money back. We will be giving away three annual memberships to three lucky students, which means more cash in your back pocket!

Your membership includes access to:

- Indoor and outdoor swimming pools;
- Four strength training circuit training areas, including a state-of-the-art Technogym® area, and an all-access area;
- A dedicated cardiovascular training area, including indoor running track;
- High-performance area, powered by Eleiko, Technogym, Life Fitness and Keiser;
- Group exercise classes; and
- A dedicated spinning studio.

Please note that certain Covid-19 protocols may still be in place during 2022 (see https://youtube/AIcE_n7RDnE).

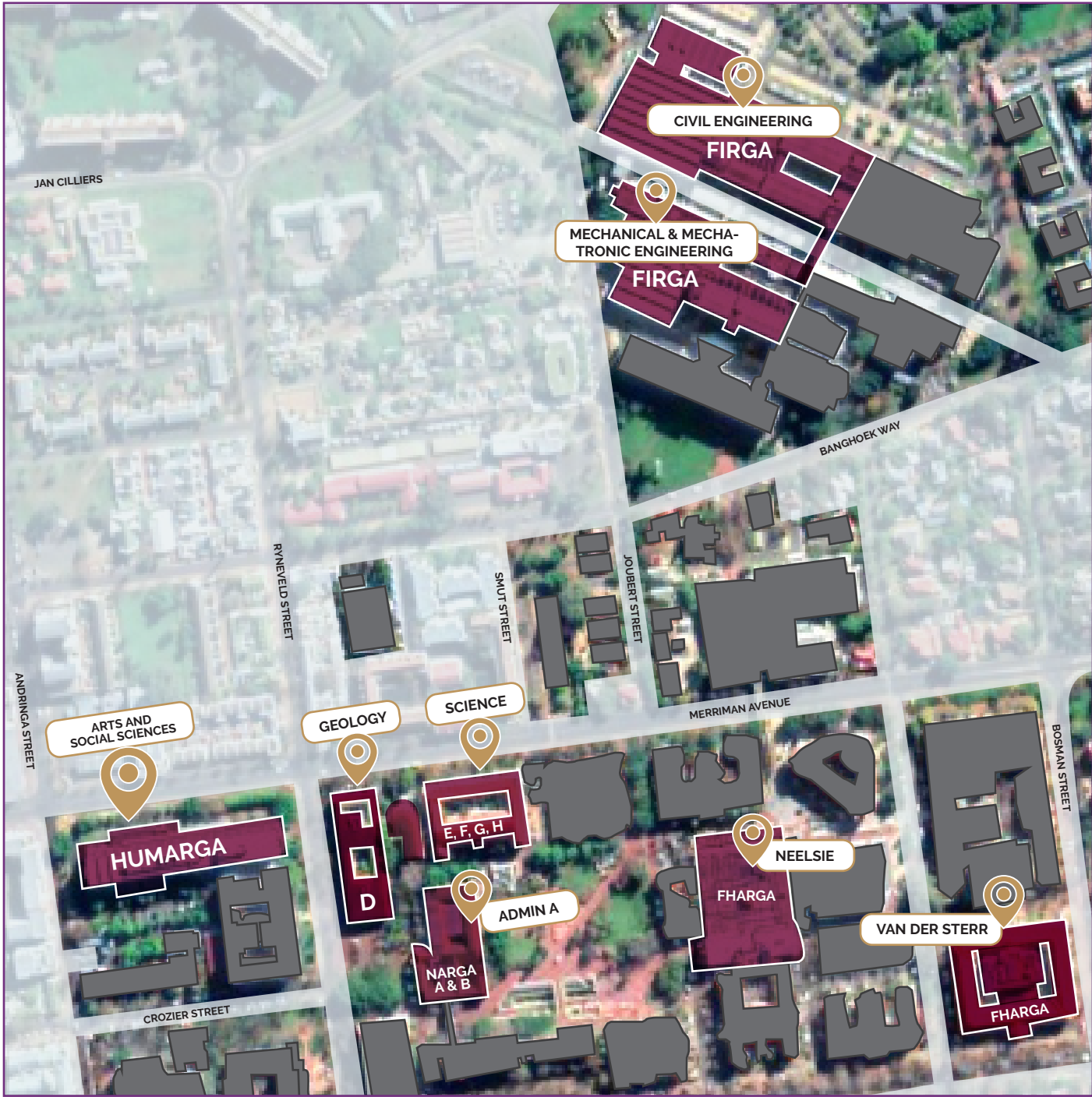
We hope to meet you in the gym soon.

The Maties Gymnasium Team
gymsales@sun.ac.za
 021 808 9133
www.matiesgym.co.za

CONNECT WITH US:

- 📷 <https://www.instagram.com/matiesgymnasium/>
- 📘 <https://www.facebook.com/MatiesGymnasium>

COMPUTER USER AREAS (CUAs)



TECHNOLOGY ON CAMPUS

- Students may connect their own devices (PCs, laptops, tablets or smart phones) to the University’s campus network, subject to certain conditions.
- To avoid long queues, you can register your private device online. More information is available on <http://www.sun.ac.za/ITHUB> or you can use the direct RegisterMe link.
- Your central point for online information is my.sun.ac.za.

Here you will find access to SUNLearn, your exam results, password change and various other services.

- For all computer and IT-related information, please visit www.sun.ac.za/ITHUB or request service at <http://servicedesk.sun.ac.za>.
- For up to date IT news on campus and elsewhere follow us on Twitter at @ITStellenUni.

CUA VENUES AND INFORMATION

FHARGA	
Venue	Van Der Sterr Building, c/o Victoria & Bosman Street and CJ Langenhoven Student Centre, Level 1 (Neelsie)
Faculty	Economic & Management Sciences
Website	www.sun.ac.za/english/faculty/economy/ebsk
Email	FHARGA@sun.ac.za
Enquiries	Neelsie Manager: Johan van Rooyen , Room E9.2 Chief Technical Officer: Chris Bosman , Room E8.2 Assistant Technical Officer: Thurlo Muller , Room E7.2 Van Der Sterr Building Technical Officer: Remé du Plessis , Room 3053
FIRGA	
Venue	Mechanical and Mechatronic Engineering Building Electronic classrooms: M2002, M2004 (Second floor) and M3002 (Third floor) Computer User Area (Firga): M1002 (First floor)
Faculty	Engineering
Website	www.firga.sun.ac.za
Email	firga@sun.ac.za
Enquiries	Manager: Johannes Brand , Room M2001 Technical Officer: Quinton Hendrikse , Room M3003 Junior Technical Officer: Bennie Lindoor , Room M1007
HUMARGA	
Venue	Arts and Social Science Building, Third floor, Merriman Avenue
Faculties	Arts and Social Sciences, Education, Law and Theology as well as blind and partially sighted students of all faculties
Website	https://humarga.sun.ac.za
Enquiries	Manager: Jan Louw , Room 301 Assistent Manager: Petro Newman , Room 301 Helpdesk: Room 306
NARGA	
Venue	NARGA A, B & Open Area: Admin A NARGA D: Geology Building NARGA E, F, G & H: Natural Sciences Building, Third floor
Faculties	Science and AgriSciences
Website	https://narga.sun.ac.za
Email	narga@sun.ac.za
Enquiries	AI Perold Building Manager: Ilse de Kock , Room 2016b Admin A Technical Officers: Johan van Rooyen & Richard Thompson , Room 2091 (Service Desk and User Support) Natural Sciences Building Senior Technical Officer: Brandon April , Room 3009 (Windows Software) Head: IT Services (Sciences): Paul Erasmus , Room 3007 (Linux System Administrator)

TAKE YOUR SAFETY SERIOUSLY

Students should take the same safety precautions in Stellenbosch than elsewhere in South Africa. Thousands of mobile phones, computers and vehicles attract criminals.

FOLLOW THESE TIPS:

- Never walk alone, especially at night. Plan to walk in groups, use the shuttle service or request security to escort you.
- Keep your phone and valuables out of sight of other people.
- Carry a whistle and pepper spray at all times to be able to draw attention if needed. Criminals hate attention.
- Choose the safest route, even if it is not the shortest. Victoria Street and Bosman Street need to be the core of your route. At night a security officer is on duty in the mobile security kiosks.
- Avoid isolated areas, especially when you exercise early in the morning or late in the afternoon.
- Be conscious of your environment, as criminals prefer to target someone not aware of his/her direct surroundings.
- Keep a safe distance if a motorist asks for directions.
- If you suspect that someone might be following you, change direction.
- Be a caring Matie: accompany a friend.
- Property on a car seat is tempting to a thief. Lock it in the boot.

Pedestrian escort service: If you need to move between campus buildings, or from a building to your car after dark (19:00 to 05:00), a security officer will walk with you. Call 021 808 4891 or alternatively 021 808 4202 and wait for an officer to join you. You can also WhatsApp the security office at 082 808 2333 to request the service. Please note that voice calls to this number is not possible. A pedestrian escort service is also available on Tygerberg campus. WhatsApp the Tygerberg security office on 083 938 1841.

SAVE THESE NUMBERS ON YOUR MOBILE PHONE

Stellenbosch 24-hour emergency	021 808 2333
Toll-free number	0800 02 58 27
WhatsApp pedestrian service	082 808 2333
General enquiries	021 808 4202
Tygerberg 24-hour emergency	021 938 9507
Toll-free number	0800 00 67 67
WhatsApp pedestrian service	083 938 1841
www.sun.ac.za/safety	



Maties care about the environment

Maties is committed to environmental sustainability and aims to be a role model for other universities in South Africa. We are committed to the following principles:

Maties is committed to environmental sustainability and aims to be a role model for other universities in South Africa. We are committed to the following principles:

Maties is committed to environmental sustainability and aims to be a role model for other universities in South Africa. We are committed to the following principles:

Waste

Maties is committed to environmental sustainability and aims to be a role model for other universities in South Africa. We are committed to the following principles:

- Reduce, Reuse, Recycle
- Proper disposal of waste
- Recycling of paper and cardboard
- Recycling of plastic and metal
- Recycling of food waste
- Recycling of electronic waste

Water

Maties is committed to environmental sustainability and aims to be a role model for other universities in South Africa. We are committed to the following principles:

- Conservation of water
- Proper disposal of water
- Recycling of water
- Recycling of water
- Recycling of water
- Recycling of water

Biodiversity and land use

Maties is committed to environmental sustainability and aims to be a role model for other universities in South Africa. We are committed to the following principles:

- Conservation of biodiversity
- Proper disposal of land use
- Recycling of biodiversity
- Recycling of biodiversity
- Recycling of biodiversity
- Recycling of biodiversity

Energy and emissions

Maties is committed to environmental sustainability and aims to be a role model for other universities in South Africa. We are committed to the following principles:

- Conservation of energy
- Proper disposal of emissions
- Recycling of energy
- Recycling of energy
- Recycling of energy
- Recycling of energy

Sustainable buildings

Maties is committed to environmental sustainability and aims to be a role model for other universities in South Africa. We are committed to the following principles:

- Conservation of buildings
- Proper disposal of buildings
- Recycling of buildings
- Recycling of buildings
- Recycling of buildings
- Recycling of buildings

Travel and mobility

Maties is committed to environmental sustainability and aims to be a role model for other universities in South Africa. We are committed to the following principles:

- Conservation of travel and mobility
- Proper disposal of travel and mobility
- Recycling of travel and mobility
- Recycling of travel and mobility
- Recycling of travel and mobility
- Recycling of travel and mobility

Goods and services

Maties is committed to environmental sustainability and aims to be a role model for other universities in South Africa. We are committed to the following principles:

- Conservation of goods and services
- Proper disposal of goods and services
- Recycling of goods and services
- Recycling of goods and services
- Recycling of goods and services
- Recycling of goods and services

Engagement

Maties is committed to environmental sustainability and aims to be a role model for other universities in South Africa. We are committed to the following principles:

- Conservation of engagement
- Proper disposal of engagement
- Recycling of engagement
- Recycling of engagement
- Recycling of engagement
- Recycling of engagement

REGISTRATION 2022

SELF-REGISTRATION (ONLINE REGISTRATION)

Students are urged to make use of the self-registration (e-registration) process, which can be accessed at www.maties.com. The relevant programme and year of study registration dates are outlined in the registration schedule. Please consult the schedule prior to registration. Please note that final admission communication will be sent from 22 January 2022 onwards.



SCAN HERE

GENERAL DATES

- 17 January 2022:** Start of online registration for undergraduate senior and postgraduate students.
- 26 January 2022:** Start of online registration for newcomer first-year students.
- 7-8 February 2022:** On-campus registration (NARGA) of newcomer first-years on the Stellenbosch campus as per the registration schedule below.
- 8-10 February 2022:** On-campus registration for senior students on the Stellenbosch campus as per the registration schedule below.
- 10 February 2022:** Conclusion of registration for all students (excluding M and D students).
- 14 February 2022:** Start of the academic year.
- 25 February 2022:** Final day for late registration for undergraduate and postgraduate students (excluding M and D students).



ASSISTED REGISTRATION SCHEDULE – NEW FIRST YEAR UNDERGRADUATE STUDENTS

FACULTY	PROGRAMME	DATE	TIME
EDUCATION	All programmes	7 February	08:00 – 09:00
ENGINEERING	All programmes	7 February	08:30 – 09:00
LAW	LLB, BCom (Law), BAaccLLB, BA (Law)	7 February	09:00 – 10:30
THEOLOGY	All programmes	7 February	10:30 – 11:30
AGRICULTURAL SCIENCES	All programmes	7 February	10:30 – 11:30
SCIENCE	All programmes	7 February	13:30 – 15:00
ECONOMIC AND MANAGEMENT SCIENCES	BAcc, BCom (all programmes, including EDP)	7 February	14:30 – 16:00
ARTS AND SOCIAL SCIENCES	All programmes	7 February	08:30 – 11:00

ASSISTED REGISTRATION SCHEDULE – SENIOR / RETURNING STUDENTS

FACULTY	PROGRAMME	DATE	TIME
ECONOMIC AND MANAGEMENT SCIENCES	• BCom (Law) • BAccLLB	8 February	14:00 – 15:00
	• BAcc • BCom (Management Accounting, Financial Accounting) • The same registration schedule applies to EDP students	10 February	08:00 – 09:30
	• BCom • BCom 9Actuarial Science, Economic Sciences, Industrial Psychology, International Business, Management Science, Mathematical Sciences) • The same registration schedule applies to EDP students	10 February	09:00 – 11:30
	• All postgraduate diplomas, honours and master's programmes	10 February	10:00 – 11:30
ENGINEERING	• Students must make use of e-registration • Only students with problems may register in NARGA during these timeslots	8 February	14:00 – 15:00
ARTS AND SOCIAL SCIENCES	• BA (Law)	8 February	14:00 – 15:00
	• BA (Humanities) • BA (Social Dynamics) • BA (Language and Culture) • BA (Socio-Informatics) • BA (Development and Environment) • BA (Political, Philosophical and Economic Studies – PPE) • B in Social Work • BA (International Studies) • BA (Human Resource Management) • All honours and master's programmes • All postgraduate diplomas • The same registration schedule applies to EDP students	9 February	08:30 – 10:30
	• Music • BA (Sports Science) • BA in Visual Arts • BA (Drama and Theatre Studies)	9 February	08:00 – 11:00 10:30 – 11:00 10:30 – 11:00 10:30 – 11:00
LAW	• LLB • LLM • LLD • Postgraduate diplomas	8 February	14:00 – 15:00
EDUCATION	• PGCE • Advanced Diploma in Education • BEd (General Education) • All other postgraduate programmes	9 February	14:00 – 15:30
AGRISCIENCES	• BScAgric (all programmes and EDP) • BSc in Food Science (all programmes) • BAgricAdmin • All postgraduate diplomas and honours, master's and doctoral programmes in Agriculture • BSc in Forestry (Forestry and Wood Science) and EDP • Honours, master's and doctoral programmes in Forestry • BSc in Conservation Ecology	9 February	14:00 – 15:00
SCIENCE	• BSc (all programmes and EDP) • Honours and master's programmes	10 February	14:00 – 16:00
THEOLOGY	• BTh (including EDP) • BDiv • MDiv • MTh • MPhil • Doctoral studies, postgraduate diplomas	9 February	08:30 – 15:30

Please note that the above schedules are conditional and assumes that the current Covid-19 regulations will not change, and no changes may become necessary to mitigate any associated risks.

Visit www.sun.ac.za/welcome for the programmes and latest information

EXTENDED DEGREE PROGRAMMES

Extended Degree Programmes (EDPs) offer selected students the opportunity to strengthen their study base with a view to ultimate success.

Faculties that offer Extended Degree Programmes are:

- AgriSciences
- Economic and Management Sciences
- Engineering
- Arts and Social Sciences
- Science

See contact details below for any questions regarding the Extended Degree Programmes.

All first-years participate in **early assessment**. To this end, you will complete a form of assessment in all first-year modules in the first six weeks of the academic year in order to form an early impression of your academic progress. Therefore, it is important that you give your studies your full attention from the outset, so that Early Assessment offers a true reflection of your progress.

Please note: Students who are following an Extended Degree Programme register in faculty context. Please consult the notice on registration that will be sent to you separately by the University Registrar.

AGRISCIENCES	Dr Natasja Brown nbro@sun.ac.za 021 808 2015
ECONOMIC AND MANAGEMENT SCIENCES	Dr Sharon Malan sbmalan@sun.ac.za 021 808 9427
ENGINEERING	Ms Natalie White natalies@sun.ac.za 021 808 4360
ARTS AND SOCIAL SCIENCES	Dr Anita Jonker axjonker@sun.ac.za 021 808 2081
SCIENCES	Ms Aatika Valentyn aatika@sun.ac.za 021 808 3063

ONLINE ONBOARDING PROGRAMME



DID YOU KNOW?

Stellenbosch University offers all first years an online onboarding programme. Everything you need to know about SU and your faculty is just a few clicks away!

The programme is available on SUNLearn (the University's learning management system). This is where you will be spending a lot of time as a student, so this is an effective way to familiarise yourself with the platform. The following topics (apart from the faculty-specific information) are explained:

Making the most of my 24 hours (time management)

Rocking university life (success and well-being)

Go with the flow (stress management)

Ace your studies (exam and study skills)

Money matters (financial literacy)

Speak, listen, read, and write like a pro
(academic writing, reading, etc)

Be the best student you can be
(I-FlourishWell4Life programme)

In an extended question and answer section you will be able to search for the answer to many of the questions you may have about SU and even post your own. Videos of students sharing ways to cope at university, a virtual campus tour, and info on available support are easily accessible.

Click on this link to access the programme:
<https://learn.sun.ac.za/course/view.php?id=65391>

Please email the onboarding team at onboardingsu@sun.ac.za if you have any questions about the onboarding programme.



Transport on SU campuses

Lighten point-to-point in grid ground campus without using motorbikes. This application provides which are designed to the university. They also provide adequate parking spaces for the night.



Walking
Along routes
parking
is easy.



Cycling
Use a bicycle to travel
on campus. Parking is
easy and free of charge
at the university.



Driving
Use a car to travel
on campus. Parking is
easy and free of charge
at the university.



Parking
Parking is free
at the university. Parking
is easy and free of charge
at the university.

Transport on Stellenbosch campus



Public transport
Use a bus to travel
on campus. Parking is
easy and free of charge
at the university.



Daytime
Use a bus to travel
on campus. Parking is
easy and free of charge
at the university.



Nighttime
Use a bus to travel
on campus. Parking is
easy and free of charge
at the university.

Transport on Tygerberg campus



Walking
Along routes
parking
is easy.



Driving
Use a car to travel
on campus. Parking is
easy and free of charge
at the university.

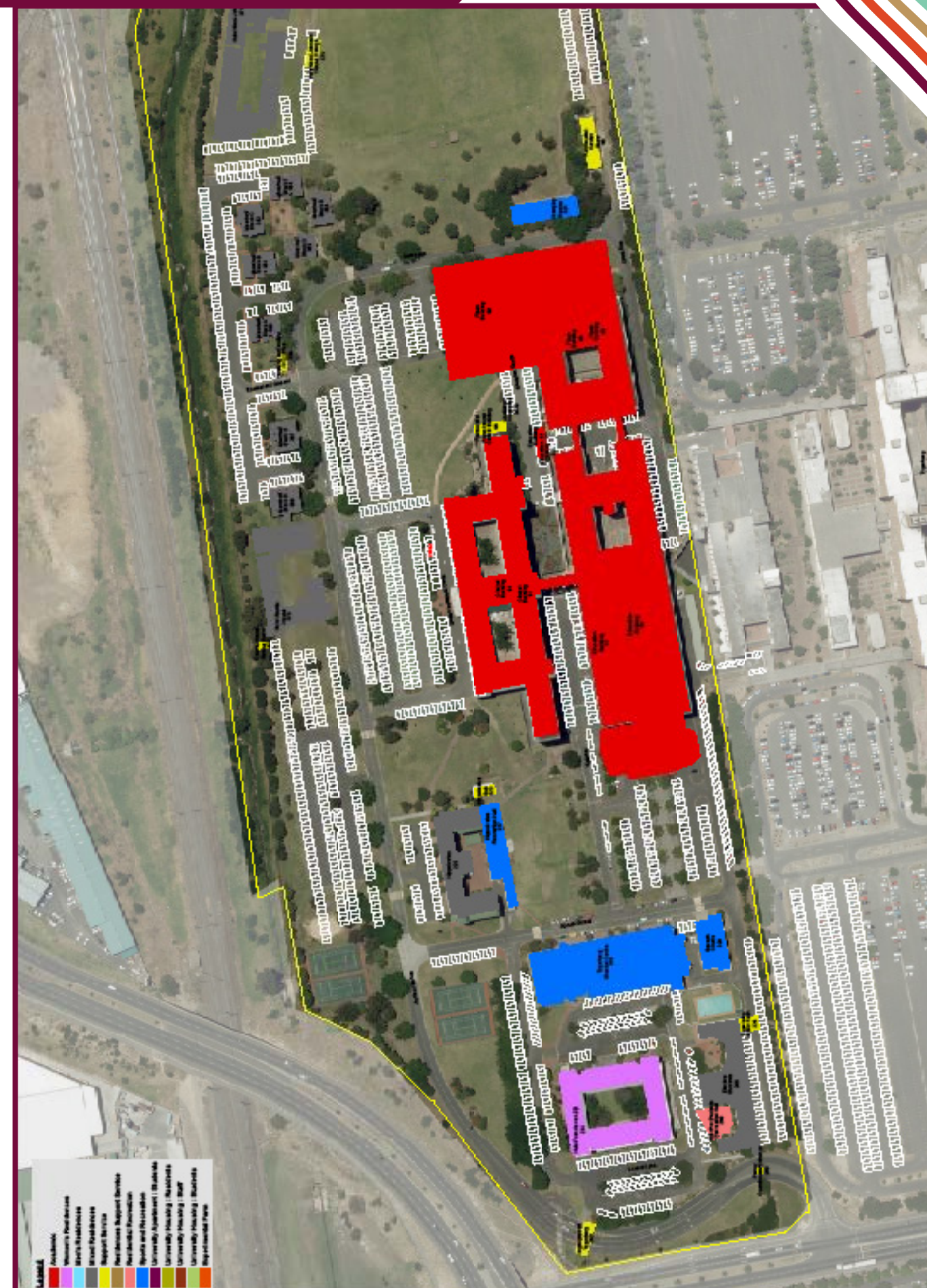


Public transport
Use a bus to travel
on campus. Parking is
easy and free of charge
at the university.



Parking
Parking is free
at the university. Parking
is easy and free of charge
at the university.

TYGERBERG CAMPUS MAP



STELLENBOSCH CAMPUS MAP – INDEX

