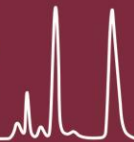


DNA Sequencer

CAF



Central
Analytical
Facilities

STELLENBOSCH UNIVERSITY

RULES FOR ENTERING LAB C118

- 1) NO cell phones, food or drink are allowed into the lab.
- 2) Consult booking sheet for instruments if applicable.
- 3) Fill in entry log sheet.
- 4) The following are not to be taken into the lab:
 - a. Your own gloves.
 - b. Your own lab coat.
 - c. Above mentioned items will be supplied by CAF on request, as well as safety goggles.
- 5) Keep the door closed at all times.
- 6) Clients are only allowed to use the following equipment:
 - a. StepOnePlus Realtime Instrument
 - b. NanoDrop ND1000
- 7) The following equipment may only be operated or handled by the client after permission was given by CAF-personnel of the DNA Sequencer:
 - a. PCR cyclers
 - b. Qubit 2.0
 - c. Agilent Bioanalyzer
- 8) Be careful not to disturb the bench on which the Bioanalyzer is situated.
- 9) Failure to adhere to points 1 to 8 may result in the retraction of the offender's right to enter C118 in future.

I, _____ hereby agree to adhere to the rules as stated in this document.

SIGNED: _____

DATE: _____