

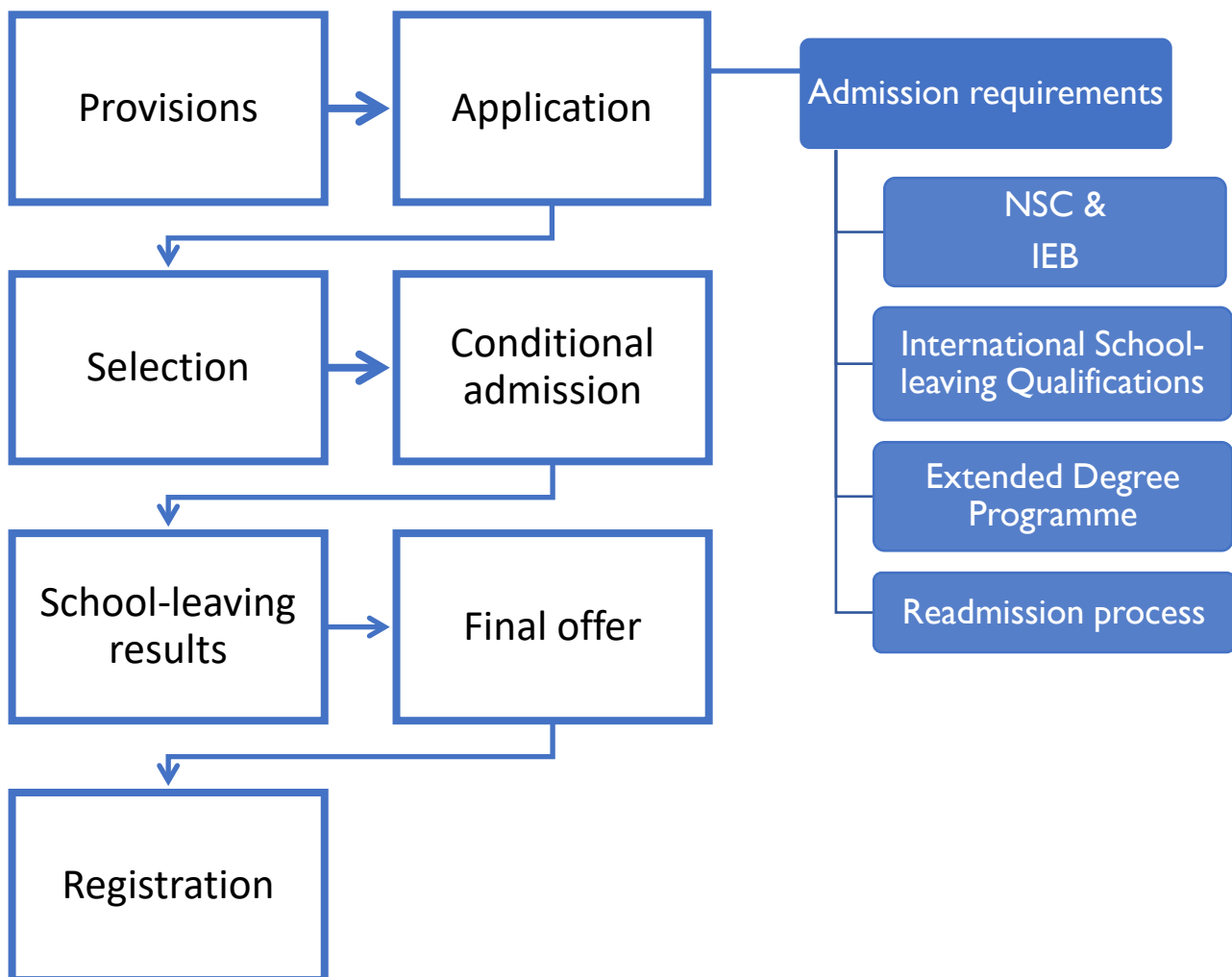
APPLICATION, SELECTION AND ADMISSION

for UNDERGRADUATE PROGRAMMES:

FACULTY OF SCIENCE

PURPOSE

This document provides the guidelines used in the application, selection, and admission procedures for undergraduate programmes offered by the Faculty of Science. The selection and admission procedures are followed in accordance with the Admission Policy of Stellenbosch University (SU).



saam vorentoe · masiye phambili · forward together

Fakulteit Natuurwetenskappe | Faculty of Science

Privaat sak XI, Private Bag XI, Matieland, 7602

Tel: +27 21 808 3931 | Email: aatika@sun.ac.za | www.sun.ac.za

1. PROVISIONS

- 1.1 Prospective students may apply for a maximum of **three undergraduate** programmes (not necessarily all in the same faculty) and should not apply for more than one stream in any particular programme in the Faculty of Science (since the same admission and selection requirements apply to all streams within a given programme).
- 1.2 The **choice** of programmes is important since this is taken into account during the reconsideration of applications, and requests for transfers to other programmes within the faculty. In particular:
- You will be considered for, and receive an offer for each chosen programme, if you meet the selection criteria.
 - Any request to change the three programme choices must be submitted to info@sun.ac.za.
 - No late applications will be considered.
- 1.3 Admission requirements (in Appendices 1, 2 and 3) are the minimum requirements an applicant must meet. Selection criteria may be set at higher thresholds depending on the number of applications received and spaces available in a particular programme.

2. PROCEDURE

2.1 Application

- 2.1.1 Fully completed applications must be submitted online **by 31 July** of the year preceding the intended year of study.
- 2.1.2 A **FULLY COMPLETED APPLICATION** means that all the steps of the application process have been finalised and that all relevant documents have been submitted. You will then receive confirmation of your application via email.
- 2.1.3 An applicant who is completing his/her final school year and is selected for a particular programme on the basis of his/her grade 11 marks, will receive **conditional** admission for that programme. The condition being that the applicant's final school-leaving results **ALSO** meet the minimum admission requirements for the programme for which he/she has been conditionally accepted.
- 2.1.4 An applicant will receive **final** admission if the school-leaving results also meet the minimum admission requirements for the programme for which he/she has been conditionally accepted. Such an applicant will then receive a final offer to study at SU.
- 2.1.5 An applicant who are already in possession of a school-leaving certificate will be selected based on those results. Should such an application for a particular programme be successful, admission into the specific programme will already be final.

2.2 Selection

The selection process is done by the Selection Committee of the Faculty of Science in accordance with the Admission Policy of Stellenbosch University. The Selection Committee is composed of the Dean, Vice-Dean: Teaching & Learning, the Director: Faculty Management, the Faculty Administrator, and the Coordinator: Academic and Student Affairs. All decisions regarding selection and admission are ratified by the Dean prior to communication with the candidates and decisions of the committee are therefore final.

2.2.1 Selection for Programmes

- The faculty has a target of 700 new first-year intake of which 40% should comprise diversity candidates by 2024. For each programme there is also an admission target.

Programmes	Admission target
Biological Sciences <ul style="list-style-type: none">• Biodiversity and Ecology• Molecular Biology and Biotechnology• Human Life Sciences• Sport Science	325
Physical Sciences <ul style="list-style-type: none">• Chemistry• Physics• Earth Sciences• Geoinformatics	100
Mathematical Sciences <ul style="list-style-type: none">• Abstract Mathematics• Biomathematics• Applied Mathematics• Mathematics• Mathematical Statistics• Operations Research	50
Computer science	150
Interdisciplinary streams <ul style="list-style-type: none">• Applied Medicinal Chemistry• Biomedical Mathematical Sciences• Bioinformatics and Computational Biology• Data Science	75

- The principle of overbooking is applied to compensate for conditionally accepted applicants who do not take up the final offer to register. The overbooking rate is reviewed annually to incorporate changing application and registration trends.

2.2.2 Selection Mark

- Applicants who meet the minimum admission criteria ([Appendices 1, 2, and 3](#)) are ranked according to a **selection mark SM**, which is calculated as follows:

NSC & IEB	$(2 \times \text{Mathematics mark} + \text{the marks of five other subjects}) \div 7$
NSC & IEB (more than six school subjects)	$(2 \times \text{Mathematics mark} + \text{the marks of the five best subjects}) \div 7$
International School-leaving Qualifications	$(2 \times \text{Mathematics mark} + \text{marks of other subjects}(n)) \div (n+1)$

- The Life Orientation mark is excluded in the calculation of the selection mark.
- At least one language will be included in the calculation of the selection mark: whether it be Afrikaans or English, as Home or First Additional Language.
- The final promotional marks of Grade 11 are used to calculate the selection mark for applicants in their final school year. Results of the final school year examinations are used to calculate the selection mark for applicants who are already in possession of a school-leaving certificate.

2.2.3 Selection Phases based on the selection mark:

There are four selection phases for each programme, depending on the available spaces in the programme.

Selection Phases	Description																
Phase 1	All applicants with a Selection Mark (SM) $\geq 75\%$ will be conditionally accepted within one month after the submission of a fully completed application before 31 July.																
Phase 2	<p>All applicants with a Selection Mark (SM) $< 75\%$ will be conditionally accepted within two months after the submission of a fully completed application before 31 July, if the selection mark is within the specified range for a chosen programme as in the table below:</p> <table border="1" data-bbox="296 472 1345 1641"> <thead> <tr> <th data-bbox="296 472 967 533">Programmes</th> <th data-bbox="967 472 1345 533">Selection Mark (SM) Range</th> </tr> </thead> <tbody> <tr> <td data-bbox="296 533 967 685"> Biological Sciences <ul style="list-style-type: none"> • Molecular Biology and Biotechnology • Human Life Sciences </td> <td data-bbox="967 533 1345 685">$72 \leq SM < 75$</td> </tr> <tr> <td data-bbox="296 685 967 837"> Biological Sciences <ul style="list-style-type: none"> • Biodiversity and Ecology • Sport Science </td> <td data-bbox="967 685 1345 837">$70 \leq SM < 75$</td> </tr> <tr> <td data-bbox="296 837 967 1016"> Physical Sciences <ul style="list-style-type: none"> • Chemistry • Physics • Earth Sciences • Geoinformatics </td> <td data-bbox="967 837 1345 1016">$70 \leq SM < 75$</td> </tr> <tr> <td data-bbox="296 1016 967 1169"> Interdisciplinary <ul style="list-style-type: none"> • Biomedical Mathematical Sciences • Applied Medicinal Chemistry • Bioinformatics and Computational Biology </td> <td data-bbox="967 1016 1345 1169">$70 \leq SM < 75$</td> </tr> <tr> <td data-bbox="296 1169 967 1458"> Mathematical Sciences <ul style="list-style-type: none"> • Abstract Mathematics • Applied Mathematics • Biomathematics • Financial Mathematics • Mathematics • Mathematical Statistics • Operations Research </td> <td data-bbox="967 1169 1345 1458">$70 \leq SM < 75$</td> </tr> <tr> <td data-bbox="296 1458 967 1496"> Computer science </td> <td data-bbox="967 1458 1345 1496">$70 \leq SM < 75$</td> </tr> <tr> <td data-bbox="296 1496 967 1641"> Data Science <ul style="list-style-type: none"> • Applied Mathematics • Computer Science • Statistical Physics </td> <td data-bbox="967 1496 1345 1641">$SM \geq 80$</td> </tr> </tbody> </table>	Programmes	Selection Mark (SM) Range	Biological Sciences <ul style="list-style-type: none"> • Molecular Biology and Biotechnology • Human Life Sciences 	$72 \leq SM < 75$	Biological Sciences <ul style="list-style-type: none"> • Biodiversity and Ecology • Sport Science 	$70 \leq SM < 75$	Physical Sciences <ul style="list-style-type: none"> • Chemistry • Physics • Earth Sciences • Geoinformatics 	$70 \leq SM < 75$	Interdisciplinary <ul style="list-style-type: none"> • Biomedical Mathematical Sciences • Applied Medicinal Chemistry • Bioinformatics and Computational Biology 	$70 \leq SM < 75$	Mathematical Sciences <ul style="list-style-type: none"> • Abstract Mathematics • Applied Mathematics • Biomathematics • Financial Mathematics • Mathematics • Mathematical Statistics • Operations Research 	$70 \leq SM < 75$	Computer science	$70 \leq SM < 75$	Data Science <ul style="list-style-type: none"> • Applied Mathematics • Computer Science • Statistical Physics 	$SM \geq 80$
Programmes	Selection Mark (SM) Range																
Biological Sciences <ul style="list-style-type: none"> • Molecular Biology and Biotechnology • Human Life Sciences 	$72 \leq SM < 75$																
Biological Sciences <ul style="list-style-type: none"> • Biodiversity and Ecology • Sport Science 	$70 \leq SM < 75$																
Physical Sciences <ul style="list-style-type: none"> • Chemistry • Physics • Earth Sciences • Geoinformatics 	$70 \leq SM < 75$																
Interdisciplinary <ul style="list-style-type: none"> • Biomedical Mathematical Sciences • Applied Medicinal Chemistry • Bioinformatics and Computational Biology 	$70 \leq SM < 75$																
Mathematical Sciences <ul style="list-style-type: none"> • Abstract Mathematics • Applied Mathematics • Biomathematics • Financial Mathematics • Mathematics • Mathematical Statistics • Operations Research 	$70 \leq SM < 75$																
Computer science	$70 \leq SM < 75$																
Data Science <ul style="list-style-type: none"> • Applied Mathematics • Computer Science • Statistical Physics 	$SM \geq 80$																
Phase 3	All applicants with a Selection Mark (SM) lower than the specified range for a chosen programme will not be granted immediate conditional admission to that chosen programme . Such applicants will be placed on a waiting list for their chosen programmes OR they may choose to change their choice of programmes. Another round of selection may be conducted depending on the availability of places in the various programmes. Other relevant information may be taken into account during this phase.																
Phase 4	<p>All applicants who are not selected during Phase 1, 2 or 3 and who comply with the socio-economic status (SES)* requirements of the University's admission policy may be selected for an Extended Degree Programme.</p> <p style="text-align: right;">*The university determines all applicants' SES scores.</p>																

2.3 FINAL ADMISSION AFTER SCHOOL-LEAVING RESULTS

- 2.3.1 Each applicant who were granted conditional admission to a programme in the Faculty of Science **and** whose school-leaving results meet the minimum admission requirements for that programme (as in [Appendices 1,2, 3](#)) will receive a final offer to study at SU.
- 2.3.2 The final offer must be accepted to obtain final admission status and permission to register.
- 2.3.3 Registration can be done electronically online (e-registration) from two weeks prior to the start of the first term of the academic year, or alternatively during the period of on-campus first-year registration as communicated in the [Guide For Newcomers](#).

3. SPECIAL ADMISSION REQUESTS

3.1 Submission of requests

- 3.1.1 The following categories of special admission requests will be considered:
- i. Applicants **who obtained conditional admission** to a programme in the Faculty of Science, **but** whose **school-leaving results do not meet the minimum admission requirements** of the specific programme; and who wish to be considered for admission to an Extended Degree Programme.
 - ii. Applicants **who have been conditionally accepted** to a programme in the Faculty of Science, but wish to change programme or stream.
 - iii. Applicants who **have not been conditionally accepted** to a programme in the Faculty of Science based on their grade 11 marks, but whose final school-leaving marks meet the admission requirements and selection criteria for the programme.
 - iv. Applicants **who have been conditionally accepted** to a programme in another faculty at Stellenbosch University, but wish to change to a programme in the Faculty of Science.
- 3.1.2 These special admission requests should be **submitted online** via the [Special Admission Request form](#). This form will be active from 2 January until the last day for on-campus registration of senior students.
- 3.1.3 Applicants who are **improving their school-leaving results** or taking Mathematics and/or Physical Science (Chemistry and Physics) additional as school subjects, should submit a request, as well as the improved marks to the Admissions Division (info@sun.ac.za) as soon as these results are available. For consideration, the improved results must comply with the minimum requirements **and** the selection criteria for the specific programme as implemented in the year of application.
- 3.1.4 Applicants with **disabilities** should complete the [Student Support form](#) from the [Centre for Student Counselling and Development](#) and contact the [Disability Unit](#) to arrange a meeting

with the Faculty of Science for determining the support that is required and what can be offered.

3.2 **Selection of applicants that submitted a special admission request**

- i. This selection will occur daily until the on-campus registration of senior students commence.
- ii. The Selection Committee will consider requests daily and an outcome will be communicated to each applicant via email.
- iii. Applicants whose requests were approved, will receive a new offer to study via email that must be accepted within three working days.
- iv. Only a limited number of students are selected for the Extended Degree Programmes using the guidelines in Appendix 3

4 **READMISSION APPEAL PROCESS**

Students who have previously been registered at Stellenbosch University, **but** who do not meet the HEMIS requirements for readmission to study at SU, should submit a Readmission Appeal Application and **not** a new application to study at SU. For further details please refer to the SU [General Calendar](#) and/or contact scienceadmin@sun.ac.za.

Appendix I

Minimum admission requirements according to the National Senior Certificate (NSC) and International Examination Board (IEB) school-leaving certificate:

- 1) An average final mark of at least 65% (excluding Life Orientation) and
- 2) A performance level of at least 4 (50%) in Afrikaans or English (Home Language or First Additional Language) and
- 3) With the minimum admission requirements for mainstream programmes as follow.

Programmes	Minimum admission requirements
BIOLOGICAL SCIENCES	
1.1 Biodiversity and Ecology 1.2 Molecular Biology and Biotechnology 1.3 Human Life Sciences 1.3.1 Stream: Biology 1.3.2 Stream: Biology with Psychology 1.4 Sport Science	Physical Sciences 4 (50%) AND Mathematics 5 (60%) or 6 (70) (the Mathematics mark determine the Physics and Mathematics that can be taken in the first year)
PHYSICAL SCIENCES	
2.1 Chemistry 2.1.1 Stream: Chemistry and Polymer Science 2.1.2 Stream: Chemical Biology 2.1.3 Stream: Materials Technology 2.2 Physics 2.2.1 Stream: Laser Physics (Physical), Nuclear-, Radiation- and Health Physics 2.2.2 Stream: Laser Physics (Biological) 2.2.3 Stream: Theoretical Physics	Physical Sciences 4 (50%) AND Mathematics 6 (70%)
2.3 Earth Science* 2.3.1 Stream: Applied Earth Science 2.3.2 Stream: Geo-Environmental Science 2.4 Geoinformatics*	Physical Sciences 4 (50%) AND Mathematics 6 (70%) OR *an option for admission with: Mathematics 5 (60%)
MATHEMATICAL SCIENCES	
3.1 Mathematical Sciences 3.1.1 Financial Mathematics 3.1.2 Applied Mathematics 3.1.3 Mathematics 3.1.4 Mathematical Statistics 3.1.5 Operational Research 3.1.6 Abstract Mathematics 3.1.7 Biomathematics Option 1: Molecular Biology Option 2: Ecology	Mathematics 6 (70%) AND If Physics or Chemistry is taken: Physical Sciences 4 (50%)
3.2 Computer Science 3.2.1 Option 1: Computer Science (excluding Genetics or Geographical Information Technology) 3.2.2 Option 2: Computer Science with Genetics 3.2.3 Option 3: Computer Science with Geographical Information	Mathematics 6 (70%) AND If Physics or Chemistry is taken: Physical Sciences 4 (50%)
INTERDISCIPLINARY STREAMS	
4.1 Stream: Biomedical Mathematical Sciences 4.2 Stream: Applied Medicinal Chemistry 4.3 Stream: Bioinformatics and Computational Biology	Mathematics 6 (70%) AND Physical Sciences 4 (50%)

Programmes	Minimum admission requirements
INTERDISCIPLINARY BDatSci	
5.1 Focus area: Applied Mathematics 5.2 Focus area: Computer Science 5.3 Focus area: Statistical Physics	Average final mark (excluding Life Orientation) 80% Afrikaans or English Home Language 60% or Afrikaans or English First Additional Language 75% Mathematics 80%
SCHOOL OF TOMORROW*	
6.1 All programmes	Admission requirements as for NSC / IEB AND National Benchmarking Test National Academic Literacy 60 Quantitative Literacy 60 Mathematics 55

Appendix 2

Minimum admission requirements for applicants with International Qualifications

Applicants with International Qualifications have to meet the requirements for university exemption laid down by the Matriculation Board, Universities South Africa, formerly known as Higher Education South Africa (HESA).

- 1) An average performance level of at least 65%
- 2) A performance level of at least 50% in Afrikaans or English and
- 3) With the minimum admission requirements for mainstream programmes provided below.

International Qualification ¹	University subjects to be taken	Minimum admission requirement
HIGCSE and Namibian NSSC	Physics or Chemistry	Physical Sciences OR Chemistry and Physics OR Natural Science 3
	Mathematics 114, 144 and Physics 114, 144	Mathematics 2
	Mathematics (Bio) 124 and Physics (Bio) 134, 154	Mathematics 3
AS-level	Physics or Chemistry	Physical Sciences OR Chemistry and Physics OR Natural Science D
	Mathematics 114, 144 and Physics 114, 144	Mathematics B
	Mathematics (Bio) 124 and Physics (Bio) 134, 154	Mathematics C
A-level	Physics or Chemistry	Physical Sciences OR Chemistry and Physics OR Natural Science E
	Mathematics 114, 144 and Physics 114, 144	Mathematics D
	Mathematics (Bio) 124 and Physics (Bio) 134, 154	Mathematics E
IB HL	Physics or Chemistry	Physical Sciences OR Chemistry and Physics 2
	Mathematics 114, 144 and Physics 114, 144	Mathematics 4
	Mathematics (Bio) 124 and Physics (Bio) 134, 154	Mathematics 3
IB SL	Physics or Chemistry	Physical Sciences OR Chemistry and Physics 2
	Mathematics 114, 144 and Physics 114, 144	Mathematics 5
	Mathematics (Bio) 124 and Physics (Bio) 134, 154	Mathematics 4
School of Tomorrow	All programmes	Can only obtain a university exemption certificate on recommendation of the Faculty of Science Meeting programme specific requirements (Appendix 1) and Performance in the National Benchmark Tests (NBTs)

¹ Contact the International Office (<http://www0.sun.ac.za/international/contact-us.html>) for the minimum admission requirements for school leaving qualifications not listed.

Appendix 3

Minimum admission requirements for Extended Degree Programmes (EDP)

An applicant **who obtained conditional admission** to a programme in the Faculty of Science, **but whose school-leaving results do not meet the minimum admission requirements** of the specific programme, may be considered for an Extended Degree Programme provided that the applicant:

- has not been previously registered at Stellenbosch University or at any other higher education institution; and
- complies with the socio-economic status (SES) requirements of the University's Admission Policy; and
- falls into one of the following categories:

	BIOLOGICAL SCIENCES	MATHEMATICAL-, PHYSICAL SCIENCES
CATEGORY 1	Average $\geq 60\%$ Life Orientation excluded	Average $\geq 60\%$ Life Orientation excluded
	Meeting ALL other admission requirements	Meeting ALL other admission requirements
CATEGORY 2	Mathematics 4 (55%)	Mathematics 5 (65%)
	Meeting ALL other admission requirements	Meeting ALL other admission requirements
CATEGORY 3	Physical Science 3 (45%)	
	Meeting ALL other admission requirements	