



Stellenbosch

UNIVERSITY
IYUNIVESITHI
UNIVERSITEIT

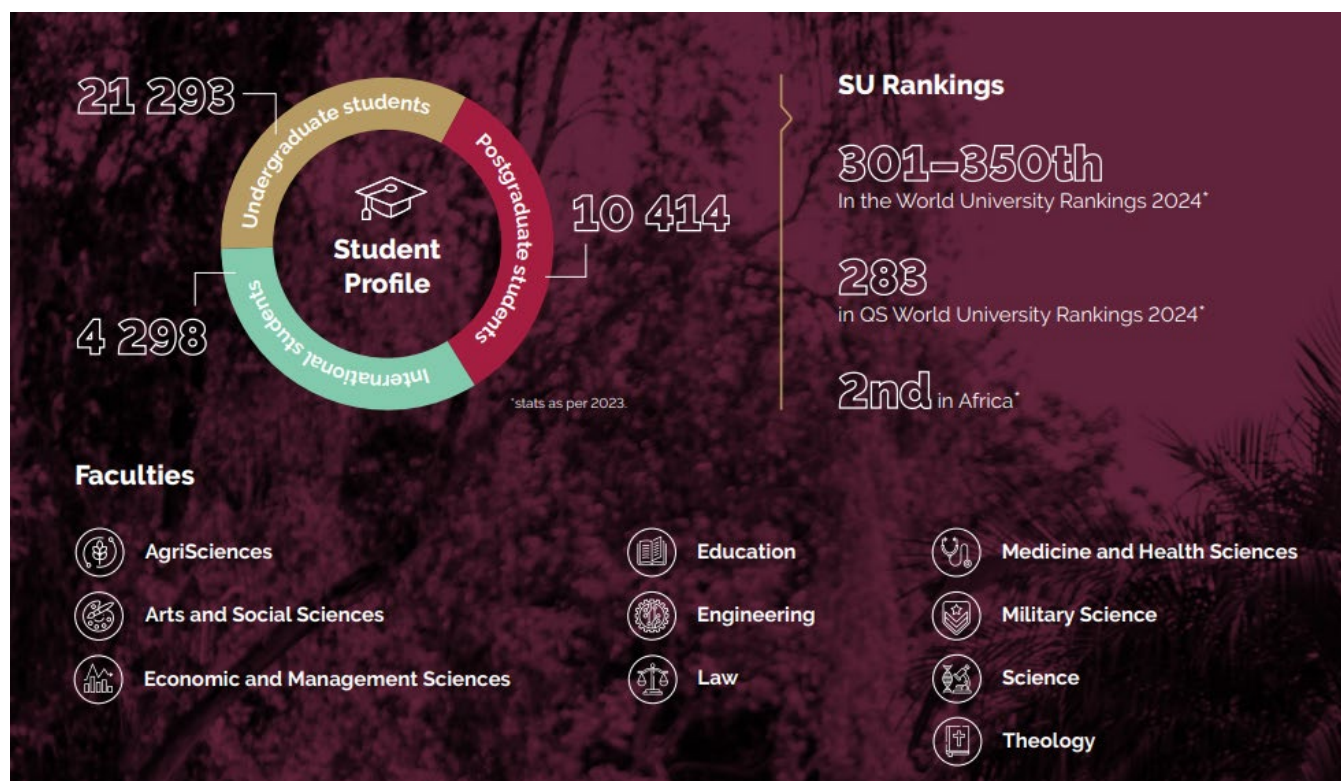
forward together
sonke siya phambili
saam vorentoe

My undergraduate application to study at Stellenbosch University in 2026

Answers to grade 11s' frequently asked questions

Disclaimer: This document contains the most current information (November 2024) from www.maties.com. However, it remains the responsibility of prospective students, parents and/or teachers to keep abreast of the latest developments.

STELLENBOSCH UNIVERSITY AT A GLANCE



**According to the (the) Times Higher Education World University Rankings data 2024.*

MY APPLICATION, PROGRAMME CHOICE and STUDY OFFER

What are the key dates for applying to Stellenbosch University?

15 March 2025	Open Day on Stellenbosch and Tygerberg campuses
1 April 2025	Undergraduate programme and residence applications open
	Launch of Open Day website
31 July 2025	Undergraduate programme and residence applications close
1 October 2025	Financial assistance (funding) applications open
31 October 2025	Financial assistance (funding) applications close

How do I secure an offer to study at Stellenbosch University?

- **Step 1: Meet the basic university entry requirements**

NSC/IEB: [Basic admission requirements](#)

International curricula: [2025-SU-International-Undergraduate-ApplicationsAdmission-requirements-2.5.2024.pdf](#) (see page 7, "Matric exemption")

- **Step 2: Meet the minimum admission requirements**

Different Stellenbosch University programmes have different minimum requirements. However, meeting the minimum requirements does not guarantee admission. Our faculties have only a fixed number of spots available, so conditional acceptance will be granted to the top applicants. In addition, for some faculties, other factors will also be considered.

- For more information on programme requirements, visit:
www.maties.com > What can I study? (select the faculty you're interested in)
- Download our minimum requirements booklet:

English: <https://blogs.sun.ac.za/open-day/files/2024/06/2025-Admission-booklet-Eng.pdf>

Afrikaans: <https://blogs.sun.ac.za/open-day/files/2024/06/2025-Admission-booklet-Afr.pdf>

IsiXhosa: <https://blogs.sun.ac.za/open-day/files/2024/03/Admission-booklet-2025-isiXhosa.pdf>

- **Step 3: Adhere to faculty/programme selection requirements**

View all faculty selection guidelines: [Admissions](#)

**The guidelines provided at the link above are those that applied for the 2025 intake and are meant to give you a broad idea of selection requirements. Selection guidelines are updated annually. The updated guidelines for the 2026 intake will be uploaded to the link by 1 April 2025 when applications open.*

Where can I find more information about the programmes that Stellenbosch University offers?

- For more information on the University's undergraduate programmes, download the [minimum admission requirements booklet](#).
- You could also view the information sessions on the University's [Open Day website](#) to learn more.

Which programmes are unique to Stellenbosch University?

- Unique programme areas in AgriSciences:
 - Viticulture and Oenology
 - Forestry and Wood Sciences
 - The only Horticultural Sciences university department in South Africa, focusing on deciduous, citrus and subtropical fruit as well as Cape flora and berries
- Unique programme areas in Economic and Management Sciences:
 - Diploma in Sustainable Development
 - BAccLLB
 - BCom International Business, a combination of the BCom Management Sciences and the BA International Studies programmes. This four-year programme includes a six-month international exchange.
- The country's first specialised School for Data Science and Computational Thinking, which offers an interdisciplinary programme that comprises the following eight focus areas, working with four different faculties. Its first intake was in 2021.
 - Analytics and Optimisation (Economic and Management Sciences)
 - Behavioural Economics (Economic and Management Sciences)
 - Statistical Learning (Economic and Management Sciences)
 - Applied Mathematics (Science)
 - Computer Science (Science)
 - Statistical Physics (Science)
 - Statistical Genetics (AgriSciences)
 - Geoinformatics (Arts and Social Sciences)
- A unique feature of our Engineering programmes is that all except the new Data Engineering stream follow the same first year. This allows students some leeway to change their focal area once they have successfully completed their first-year modules.
- Unique programme in Science: BSc in Polymer Sciences
- As a leader in the move towards a carbon-neutral university, Stellenbosch University has also launched a School for Climate Studies in 2021 – the first of its kind in South Africa that has full faculty status.

Which programmes are not offered at Stellenbosch University?

- Architecture and programmes in the built environment
- Dentistry
- Veterinary Sciences
- Marine Biology
- Hospitality Studies

However, if you have a specific career in mind, please ask. One of our programmes may very well serve as a route to that career, even though the programme name doesn't sound like it.

What programme choice guidance and resources are on offer?

- For useful downloadable (Stellenbosch University-specific) resources: <http://www.sun.ac.za/english/maties/Pages/Content/Teacher.aspx>
- You could also view the information sessions on the University's [Open Day website](#) to learn more.
- Other resources:
Fundiconnect: <https://fundiconnect.co.za/useful-resources/>
PACE Careers: <http://www.pacecareers.com/services.html>
- Free programme choice guidance (complete an online questionnaire to see which of our programmes best suit your profile): <https://www.gostudy.net/maties>

Where can I find more information on the application process?

Prospective students may apply for up to **three programmes** and will be considered for all three. This also means that an applicant may receive up to three conditional offers.

Please use the minimum admission requirements booklet for guidance on "suggested second programme choices".

- **How to apply**, including which documents to submit and how many programmes you may apply for: www.maties.com > Apply > How to apply, as well as www.maties.com > Apply > Application documents
- **Can you apply for more than one programme in the same faculty?** www.maties.com > Apply > Select your programme

Are there any additional selection requirements to take note of?

National Benchmark Test (NBT)

Applicants wishing to study in the Faculty of Law (LLB, BCom Law, BAccLLB, BA Law) are required to write the NBTs before 30 July in the year prior to their envisaged studies to be considered for selection.

With a view to the 2026 academic year, all School of Tomorrow applicants must write the NBTs before the end of 2025 to ensure that their results are available before registration in 2026.

For more information on additional selection requirements:

- www.maties.com > Apply > NBT
- To book your NBT session, visit www.nbt.ac.za.

What is the difference between a conditional and a final study offer?

- If you apply with your grade 11 results, we may admit you on the condition that you pass your final NSC or equivalent exam and that your results meet the conditions set for the programme you applied for. This would be a **conditional offer**.
- We will make a **final offer** based on your final grade 12 (or equivalent) results released at the beginning of 2026. You will have two days to accept this final offer; if not, the offer will lapse.
- If you completed your final school year earlier than 2025 and apply with your grade 12 (or equivalent) results, we will consider you for a **final offer** straight away. You will need to accept it before the due date specified in our written communication to you. As this will already be a final offer, you will not receive another "final" offer at the beginning of 2026.

Can I receive multiple offers?

- You can apply and be considered for up to three programmes. This means it is possible to receive an offer for more than one of your programme choices.
- However, you may accept only one offer at any given time.
- Conditional offers
 - If you accept a conditional offer while waiting for the outcome of another programme application, this will have no influence on such other application whatsoever. You will still be considered for the other programme.
 - Once you receive a conditional offer that you would like to accept, you should decline any other conditional offer that you have accepted up until then.

Where do I find information about students with specific learning needs?

The University is committed to assisting students with disabilities who comply with the relevant academic requirements, to become full-fledged, integrated members of the student community. Please complete the [Student support form](#) to declare your specific needs, and submit it along with your application.

Where practicable and financially feasible, the needs of students with disabilities are catered for to make the campus more accessible. Our [Disability Unit](#) coordinates disability interests at the University. For full details about the University's policy on students with disabilities, and general information regarding accommodation, physical facilities and support services on offer, please contact:

Dr Marcia Lyner-Cleophas, Disability Unit, Centre for Student Counselling and Development, Student Affairs

Email: cleophas@sun.ac.za | Tel: 021 808 4707

Where do I find information about student fees?

The links below provide information on various aspects relating to fees.

- [Study fees](#)
- [Residence fees](#)
- [Amount payable at registration](#)
- [Payment options](#)

MY BURSARY (FUNDING) APPLICATION

Students have various funding options available. Please start researching this well in advance, as the different options have different application processes and closing dates. Bursary applications must be made during your grade 12 year.

- Our website offers an overview of various funding opportunities: <https://finaid.sun.ac.za/>
- Also consult the bursaries resource page on the GoStudy website: <https://www.gostudy.net/bursaries>
- All major banks have study loan schemes, and many private companies such as FUNDI also specialise in student loans: <https://fundi.co.za/>

What are the dates to apply for funding from Stellenbosch University?

SU funding applications for prospective students open on 1 October 2025 and close on 31 October 2025.* The funding applications of late admissions will be managed on a case-by-case basis.

**Dates subject to change*

Who may apply for funding?

- All applicants who are South African citizens and who received a conditional or final offer from Stellenbosch University may apply for funding.
- Since the University's financial resources are limited, funding is allocated based on financial need (household financial circumstances) and academic merit (the applicant's potential to study successfully).

What funding does Stellenbosch University offer?

We offer a range of mostly partial-cost bursaries. For details, consult the [Bursaries and Loans part of our Yearbook](#) and also have a look under the [Types of funding](#) tab on the webpage of the Centre for Undergraduate Bursaries and Loans.

What documents will I need to provide when applying for funding?

- You will need to provide various documents to support your application for funding from Stellenbosch University. Please see the table below for a summary of the supporting documents required, depending on your personal, family and financial circumstances. All applicants must also complete the consent form, signed by all parties.
- Note that all supporting documents are to be clearly labelled, uploaded in PDF, and no file may exceed 2 MB.
- All documents submitted as proof of income will be verified by a third party.

STUDENT'S PERSONAL INFORMATION	INFORMATION OF PARENT(S) OR LEGAL GUARDIAN(S) for each parent/legal guardian
<ul style="list-style-type: none">• Certified copy of ID• Medical certificate (if you have a disability) or SASSA• One-page abridged CV, including any leadership role, sport achievement and other awards• Latest academic record if you are currently studying at another university	<ul style="list-style-type: none">• Certified copy of ID• Proof of income and monthly income before tax (salary slip/ITA34/affidavit of informal employment type and income), or unemployment (affidavit/retrenchment letter/UIF letter), or child support (maintenance agreement), or pension/SASSA (letter from bank/bank statement)• Death certificate if deceased

FAMILY INFORMATION <ul style="list-style-type: none"> For marital status of parent(s)/legal guardian(s) <i>if</i> separated, divorced or estranged, proof of separation, divorce (divorce decree) <i>or</i> estrangement, and maintenance agreement <i>if</i> applicable Proof of university registration of any siblings, for up to three siblings only 	SPOUSE'S INFORMATION if applicant is married/widowed <ul style="list-style-type: none"> Certified copy of ID Proof of income and monthly income before tax (salary slip/ITA34/affidavit of informal employment type and income), <i>or</i> unemployment (affidavit/retrenchment letter/UIF letter), <i>or</i> child support (maintenance agreement), <i>or</i> pension/SASSA (letter from bank/bank statement) Death certificate <i>if</i> deceased
Plus the CONSENT FORM , signed by all parties.	

How do I apply for funding?

- As a prospective student, once you have accepted your conditional or final offer, you will receive an email from the Centre for Undergraduate Bursaries and Loans (CUBL). The email will include details on how to apply for funding. All applications occur online, and you will need your SU student number to access the portal. In the interim, more information is available on the CUBL webpage, under the [Application process](#) tab.

When will I be informed of the outcome of my funding application?

- All applications will be considered after the closing date. Applicants for Stellenbosch University's own bursaries will be notified of the outcome by the end of February 2026.
- The outcome dates for bursaries from SU's external donors may vary, although the majority will be allocated by the end of May 2026.

Who can I contact if I have more questions about SU funding?

You're welcome to contact our Client Services Centre on 021 808 9111 or info@sun.ac.za. If you prefer to email, please include your SU student number (#) in the subject line, for example "#/2026 SU funding query".

MY STUDENT ACCOMMODATION

Does my academic offer include an accommodation offer?

Accommodation is not included in your academic offer. You are responsible to secure your own accommodation, at your own cost, before you arrive on campus and register. Visit www.maties.com for more information on residence and accredited private accommodation.

How does the timeline for residence placement work?

- Offers for placement in a Stellenbosch University residence will be issued on an ongoing basis up until the end of October 2025.
- If you have not been allocated a place in residence by the end of October, you will receive an email that confirms this, referring you to our [private accommodation webpage](#).

How do I accept a place in residence if I am offered one?

- If you have been allocated a place in a Stellenbosch University residence on Stellenbosch campus, you will receive an offer letter requesting you to accept the offer and pay an acceptance fee of R5 100 within 30 calendar days.
- If we have not received your acceptance fee by the due date, your residence offer will expire.
- Based on the socioeconomic information you provided in your application to Stellenbosch University, you might be charged a reduced acceptance fee of R500, which must be paid within 30 calendar days to secure your place in residence.
 - You may request exemption from the acceptance fee by submitting a motivation and proof of financial need to info@sun.ac.za.
 - You may also be exempted from the acceptance fee if you receive financial aid based on need. Please submit proof of such bursary to info@sun.ac.za.

If my application for residence placement is unsuccessful, how do I request to be reconsidered?

- If you have not been placed in a residence, but still wish to be considered in the event of any cancellation, you may register on the waiting list at www.maties.com > Residence waiting list, from 1 November 2025.
- You could also consider private accommodation. Visit our [private accommodation webpage](#) for more information.

For more information on our residences: www.maties.com > Accommodation > University residences

For more information on private accommodation: www.maties.com > Accommodation > Private accommodation

MY STUDENT EXPERIENCE

What is Stellenbosch University's language policy?

Stellenbosch University strives to attract outstanding students, employ talented staff and make the institution inclusive and diverse. One way to achieve this is by using more than one language. Without disregarding the value of any other South African and international language, our institution uses Afrikaans, English and isiXhosa, being the three official languages of the Western Cape, where we are located. By enhancing the academic value of these three languages, we empower large and diverse communities.

- For a more detailed explanation of our language policy:
<http://www.sun.ac.za/english/about-us/language>

Is Stellenbosch campus safe?

As everywhere else in South Africa and the rest of the world, vigilance is key to ensure your personal safety on campus. Keep valuables out of sight, remain aware of your surroundings, and try not to walk alone at night.

Campus Security is a service division of the University that helps all students, staff and visitors create a safe environment. Security officers patrol the University grounds and are trained to assist in the event of an emergency.

Some security services on offer:

- **Safety escort at night**

If you need to move between campus buildings or from a building to your car between the hours of 20:00 and 05:00, security officers are at hand to escort you.

- **Campus shuttle service**

A campus shuttle service is available on Stellenbosch central campus. This service moves:

- between the general parking areas on the edge of campus and central campus during the day;
- between the long-term parking area and central points at Stellenbosch residences at specific times of the day and night; and
- between service divisions and departments on the edge of campus (such as Food Science and Welgevallen) and central campus.

- **Safest routes**

Always choose the safest route, even if it is not the shortest. Ideally, stick to Victoria and Bosman streets, as these are patrolled at all times. At night, a security officer is on duty in the mobile security kiosk. View security tips and services here: [Your security](#)

Apart from academic training, what else does student life at Stellenbosch University offer?

- **Maties Sport**

Maties Sport not only trains student athletes, but also offers other exciting opportunities for those who simply want to lead an active life.

There are various options to consider, such as:

- joining one of the ten high-performance or 20 other sporting clubs on offer: <http://www.sun.ac.za/english/sport/sport-clubs>;
- playing sport as part of recreation and an active lifestyle, with residences and Commuter Student Organisations competing against one another; and
- joining the fully equipped Maties Gym, which is within walking distance from residences and central campus: <https://matiesgym.co.za/>.

- **Other activities**

- SU has more than 60 student societies to choose from:
<http://www.sun.ac.za/english/students/student-societies>
- The SU Choir is currently ranked number one on the Interkultur rankings of the world's top 1 000 choirs:
<http://www.sun.ac.za/english/entities/choir/about-the-choir>
If you haven't heard this award-winning choir perform, do take a listen:
<https://www.youtube.com/watch?v=PoOyjlMefLw>
- Die Matie is the University's official student newspaper since 1941. It appears every second Wednesday of the academic term. The entire production of the paper – from pictures, articles and advertisements to page layout and distribution – is managed by the all-student editorial staff.
- MFM 92.6 is the campus and community radio station and is on a mission to make you "Move to the music". For more information: [MFM](#)
- The Students' Representative Council (SRC) is the highest representative

structure for our students and is elected annually. SRC members and appointed SRC managers have various portfolios through which they fulfil their mandate. For more information: [SRC](#)

I HAVE MORE QUESTIONS ...

I. Book an ONLINE SESSION.

Not able to visit campus? We've got you covered! One of our advisors will lead you in an online information session. This session will be structured to give you an overview of our application process, admission criteria, financial aid system and student life.

Platforms used include Zoom, MS Teams, WhatsApp, Skype and Facebook Messenger. A good old telephone call will also do the trick!

- **For bookings:**

Email: csr@sun.ac.za

Telephone: 021 808 4709

2. Book a PSYCHOMETRIC ASSESSMENT.

- **Costs:**

Mondays to Fridays: R2 850 per client | Saturdays: R3 350 per client

The fee is payable within 48 hours after booking. Costs apply to both in-office and online assessments.

*Keep an eye on www.maties.com and our Facebook page for special offers!

- **For bookings:**

Email: csr@sun.ac.za

Telephone: 021 808 4709

<http://www.sun.ac.za/english/maties/Pages/Career-CareerAdvice.aspx>

Please note:

- We are open during school holidays.
- Assessments are done by appointment only.
- Other services (such as career counselling at schools, school subject choice guidance, or special projects and/or workshops) are also available. Costs will depend on the nature of the project.
- We only assess persons aged 15 to 21.
- Grade 10s are only assessed if they consider changing their subjects.