



*forward together · saam vorentoe · masiye phambili*

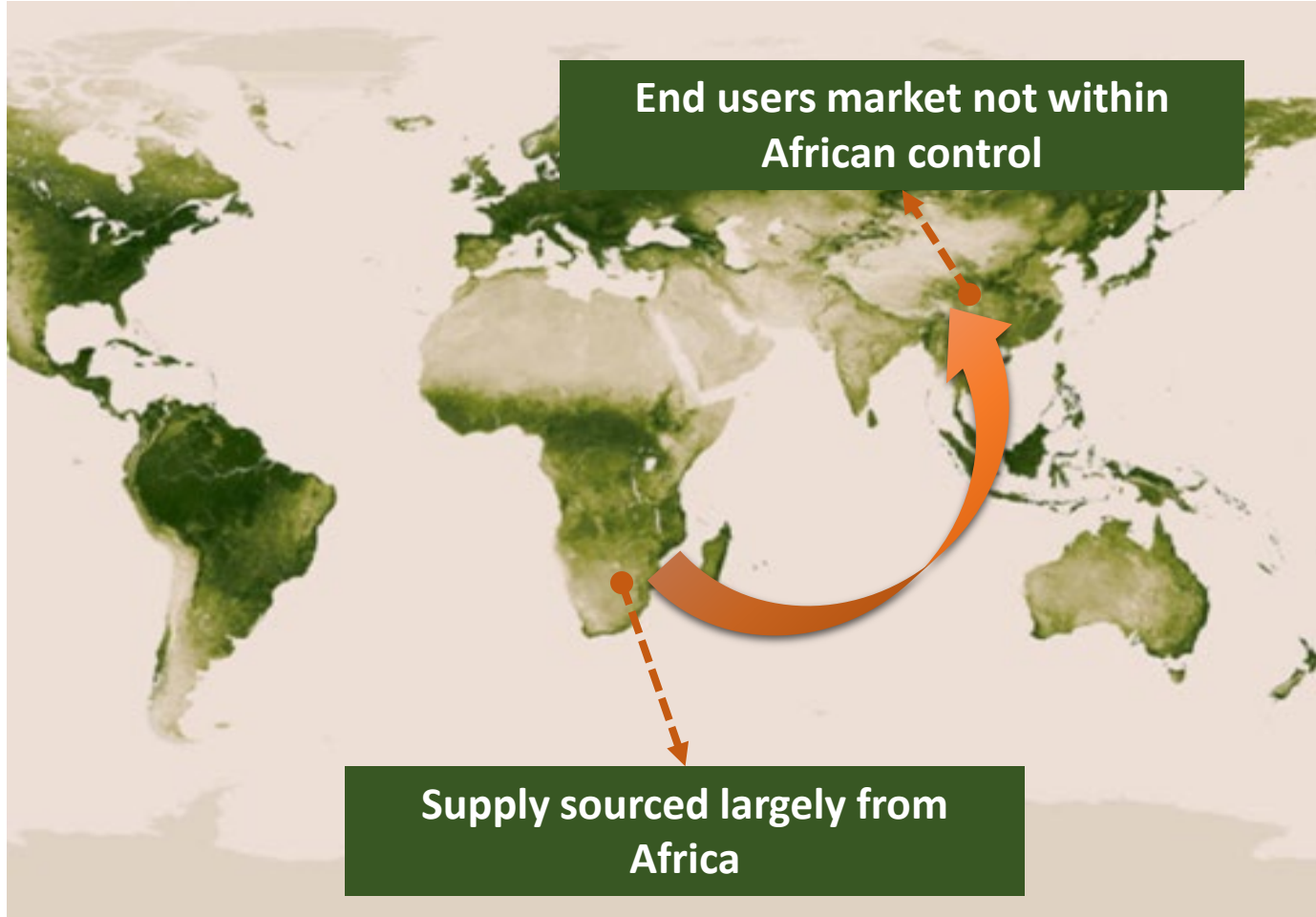


# **Border Management workshop**

*Maj Gen (ret) Johan Jooste  
(Winter 19)*



# A Global Challenge



Greed

+

Poverty



# The continental impact



- *Wildlife crime is rife, global, on the increase, and closely linked to organized crime*
- *Our natural heritage is at stake*
- *Africa's economic engine is under threat (tourism)*

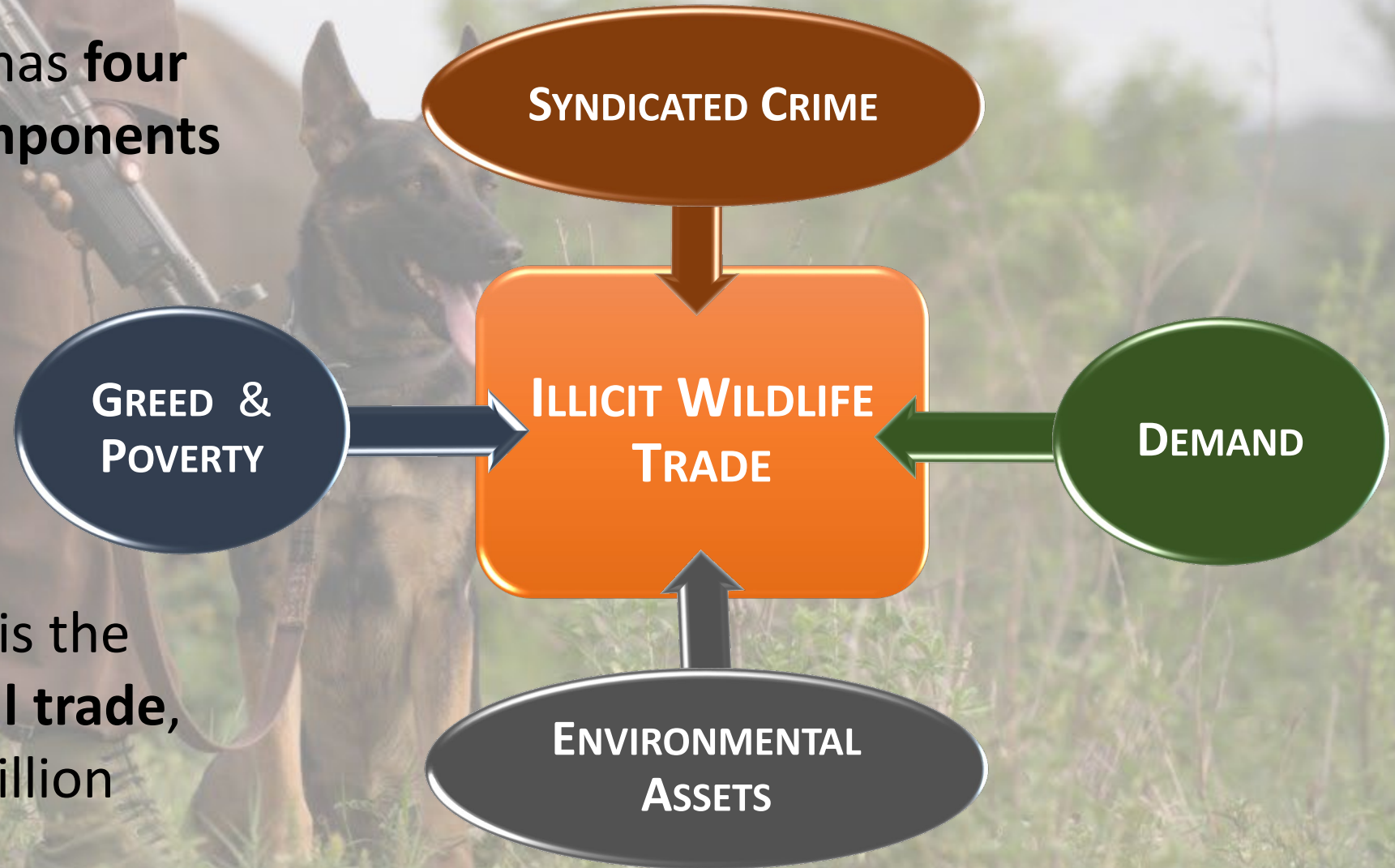
# Africa is the Last Home for Mega Fauna





# The Threat

The illicit wildlife trade has **four primary interactive components**



The illicit wildlife trade is the **4<sup>th</sup> largest global illegal trade**, estimated at over \$20billion annually

# Wildlife crime and conservation Africa

Rhino Poaching



Ivory Smuggling



Pangolin Trade



Abalone



Rhino horn smuggling





# The Odds are Stacked





# The Slaughter Continues

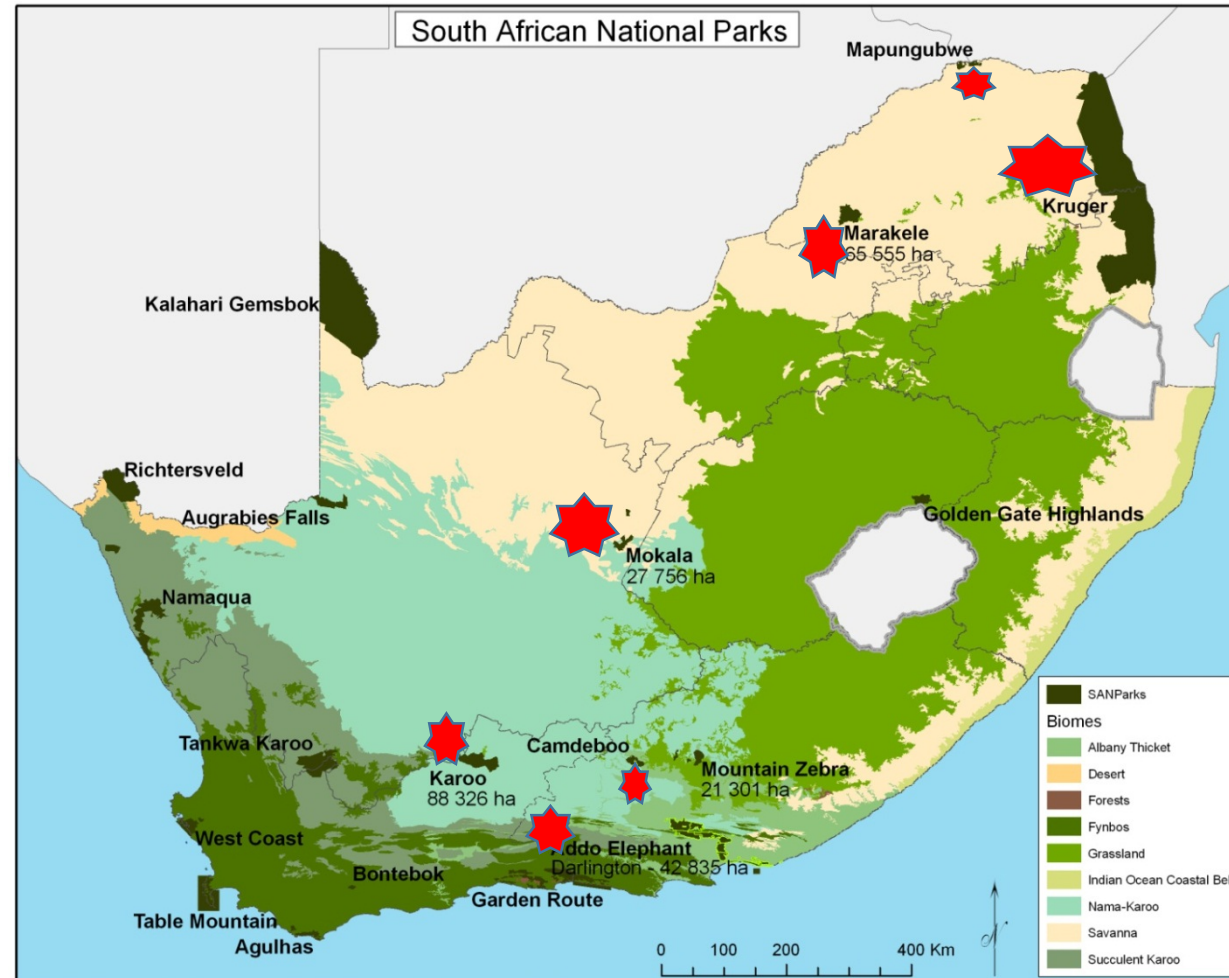
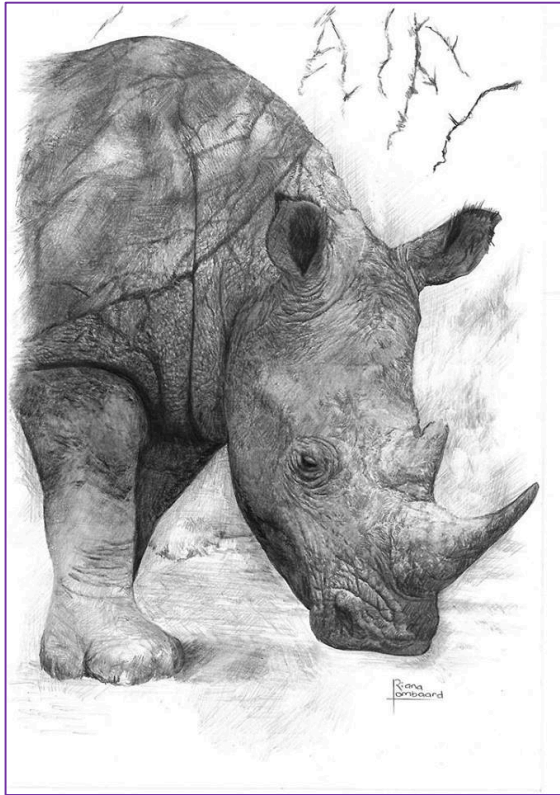




# When borders become fault lines

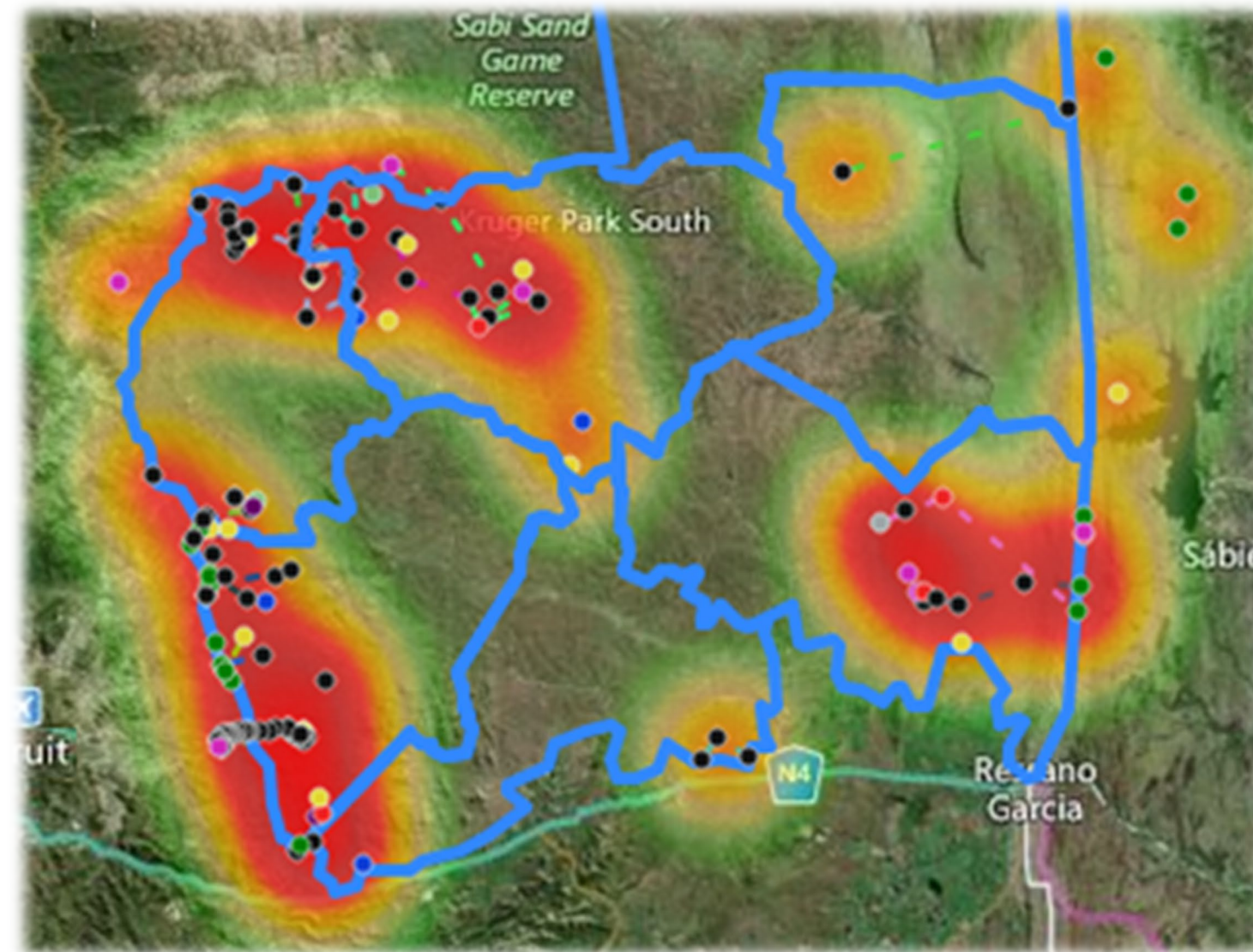


# The dilemma in protected areas when boundaries become irrelevant





# The Dark Side of Kruger



## STATISTICS:

6

INCURSIONS PER DAY

12

GROUPS IN THE PARK AT ANY TIME

7500

POACHERS IN THE PARK PER YEAR

2500

POACHING INCIDENTS PER YEAR

100

CONTACTS PER YEAR

100

SIGHTINGS PER YEAR

# 2018 SEIZURES IN AFRICAN COUNTRIES

## NIGERIA

- **7.1t** of pangolin scales seized in Hong Kong SAR from shipment declared as plastic materials in transit to mainland China.
- **3.3t** of pangolin scales seized in Viet Nam from a shipment declared as dried cashew nuts bound for Cambodia.
- **2.8t** of pangolin scales seized in Hong Kong SAR from shipment declared as metal scraps arriving from Nigeria.
- **3.5t** of elephant ivory seized in Singapore from shipment declared as groundnuts arriving from Nigeria and destined for Viet Nam

## SENEGAL

trafficker arrested with 41 sea turtle shells and 3.5kg of seahorses

## 3.8t CONGO

3.8t of pangolin scales seized in Singapore from shipment declared as logs destined for Viet Nam

## NAMIBIA

A Chinese national found in unlawful possession of one rhino horn, 60 pieces of ivory, one leopard head and skin and cheetah skin in Windhoek, Namibia

## 1.35t BOTSWANA

Abalone worth as estimated ZAR6m was seized at the border between South Africa and Botswana, hidden in potato sacks

## 800 KENYA

A government vehicle was impounded after it was found to contain 800 pieces of rosewood timber

## 6 SOMALIA

Six cheetah cubs seized in Somalia and two smugglers prosecuted in the first wildlife conviction of its kind in the country

## 340 DRC

Over 340 Grey Parrots seized by customs in Istanbul Ataturk Airport customs warehouse from DRC, en route to Iraq

## 3.4t MOZAMBIQUE

3.4t of elephant ivory tips seized before shipment in Maputo in containers declared as recyclable plastic bottles destined for Cambodia

## 10,976 MADAGASCAR

total of 10,976 live Radiated Turtles confiscated from residence in Madagascar

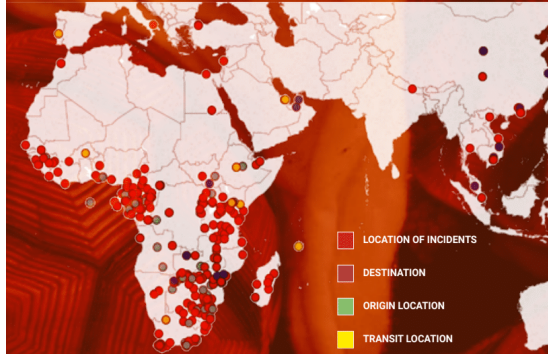
**FIGURE 4**

Examples of seizures in 2018 involving African countries, highlighting incidents involving large quantities, interesting concealment methods and noteworthy commodity types or trade routes



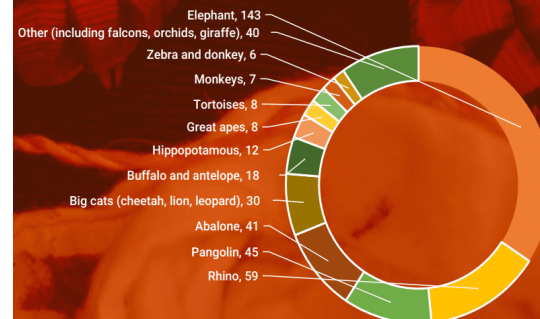
# SUMMARY

The 365 incidents (poaching incidents, seizures or broader enforcement action such as operations) linked to Africa involved 365 unique locations (Figure 1), 330 in Africa, and 35 in destination countries in mostly East Asia and involved at least 109 species from 40 taxonomic families such as the elephant and rhino families (Figure 2).



**FIGURE 1**

The geographic distribution of incidents recorded in TRAFFIC's database (Jan–Oct 2018) and the role of each location in recorded incidents.



**FIGURE 2**

The species involved in the 365 incidents linked to Africa as recorded in TRAFFIC's database (Jan–Oct 2018).

**ELEPHANT**  
**13t**  
of tusks, raw ivory, and ivory carvings

**RHINO**  
**93kg**  
of horn and horn pieces

**PANGOLINS**  
**36t**  
of scales and 10 live individuals

**ABALONE**  
**15t**  
of dried and frozen individuals

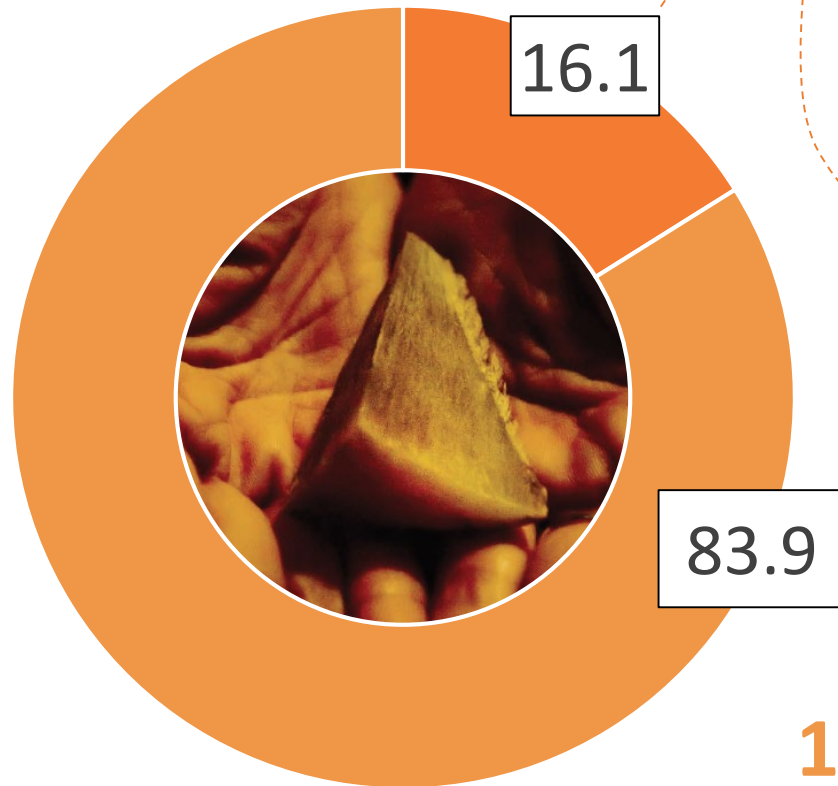
**BIG CATS**  
**165**  
live animals, skin, teeth, body parts

**HIPPOPOTAMUS**  
**180kg**  
of teeth and meat

**TURTLES**  
**11,000**  
live individuals

*Based only on data held by TRAFFIC for 2018; actual trade much larger.*

# The Seizure Deficit



**6,661 RHINOS**

RECORDED POACHED BETWEEN 2010-2016  
equivalent to 13,322 individual horns weighing 37.04 tonnes

**2,149 horns recovered**

amounting to 5.18 tonnes in 456 seizures

**11,173 horns / 31.86 tonnes**

unaccounted for and entering illegal market



# MAJOR TRADE ROUTES AND PORTS USED

To reach international destinations, wildlife products normally leave the African continent via airports and seaports.

A total of 26 airports and seven seaports in 23 different countries (14 airports and four seaports in Africa) were linked to seizures in 2018 (Figure 3).

Often the ports used are not reported, making it difficult to understand the precise routes used to traffic wildlife, however, based on the dataset, the most frequently linked ports were:

- Hong Kong SAR International Airport, Hong Kong SAR** (four incidents)
- Cat Lai Port, Viet Nam** (three incidents)
- Noi Bai International Airport, Viet Nam** (three incidents)
- Port of Beira, Mozambique** (two incidents)
- Ivato International Airport, Madagascar** (two incidents)
- Jomo Kenyatta International Airport, Kenya** (two incidents)
- Maputo International Airport, Mozambique** (two incidents)
- N'djili International Airport, Democratic Republic of the Congo** (two incidents)
- Quatro de Fevereiro International Airport, Angola** (two incidents)

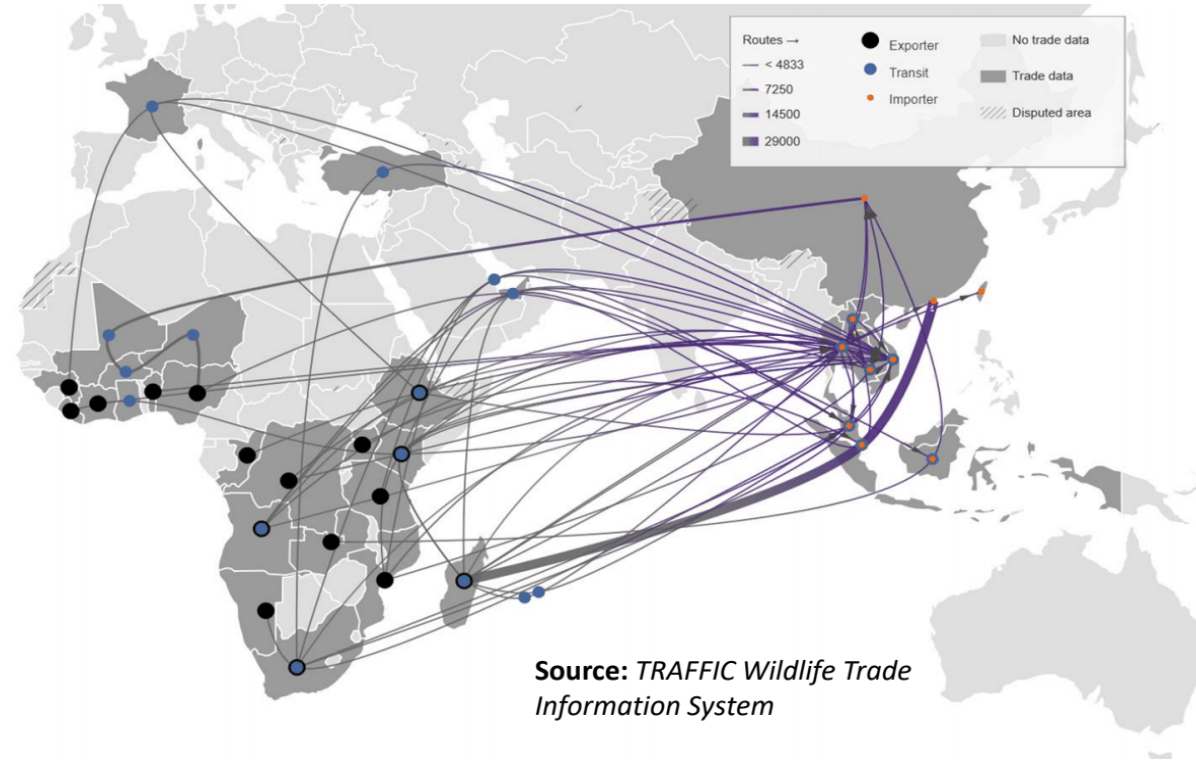


**26** **7**  
AIRPORTS SEAPORTS  
WERE IMPLICATED IN  
SEIZURES IN 2018



# Smuggling routes

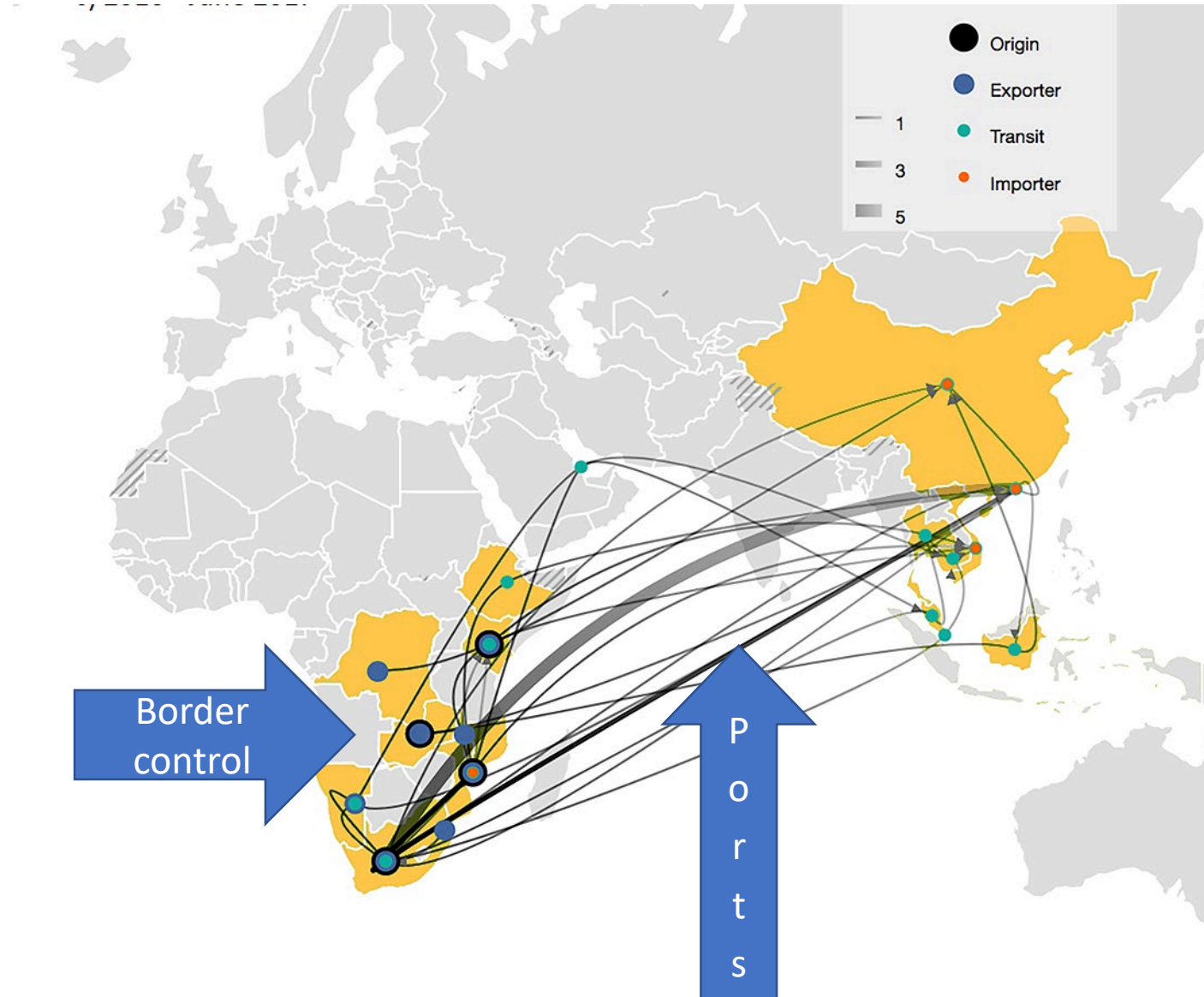
Illegal wildlife  
trade  
smuggling  
routes from  
Africa to Asia  
2014 - 2019



**Source:** TRAFFIC Wildlife Trade Information System

\* Routes mapped using open source seizure data. (See disclaimer)  
Quantities in kilograms.

# Smuggling routes



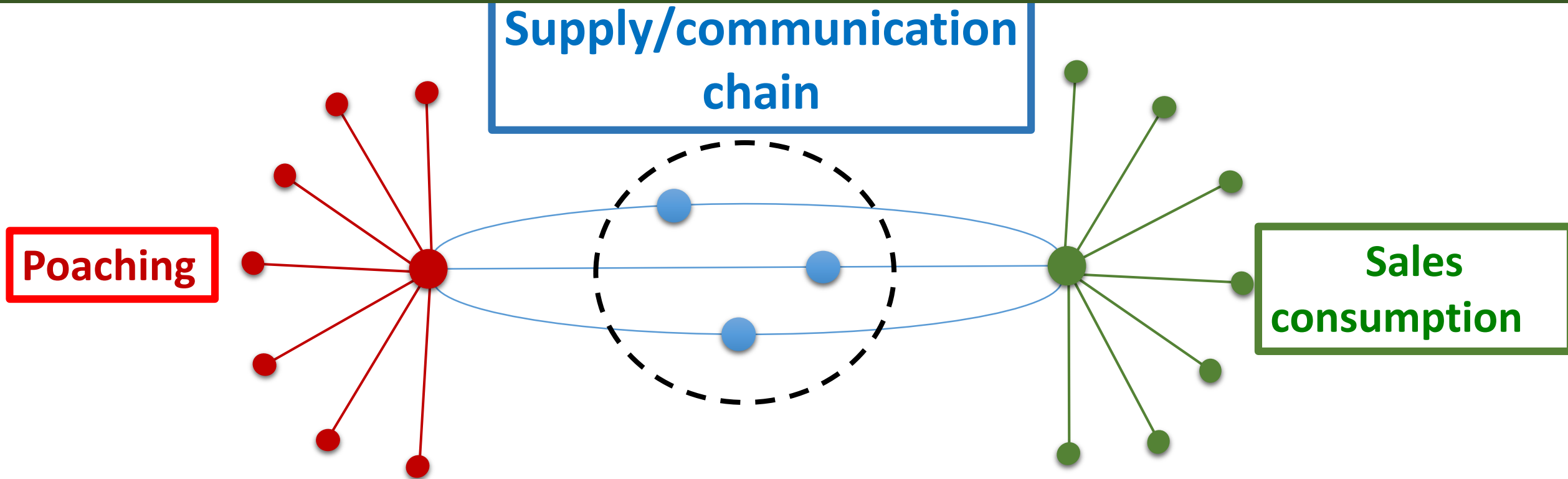
# Ports of entry/exit



Technology ??



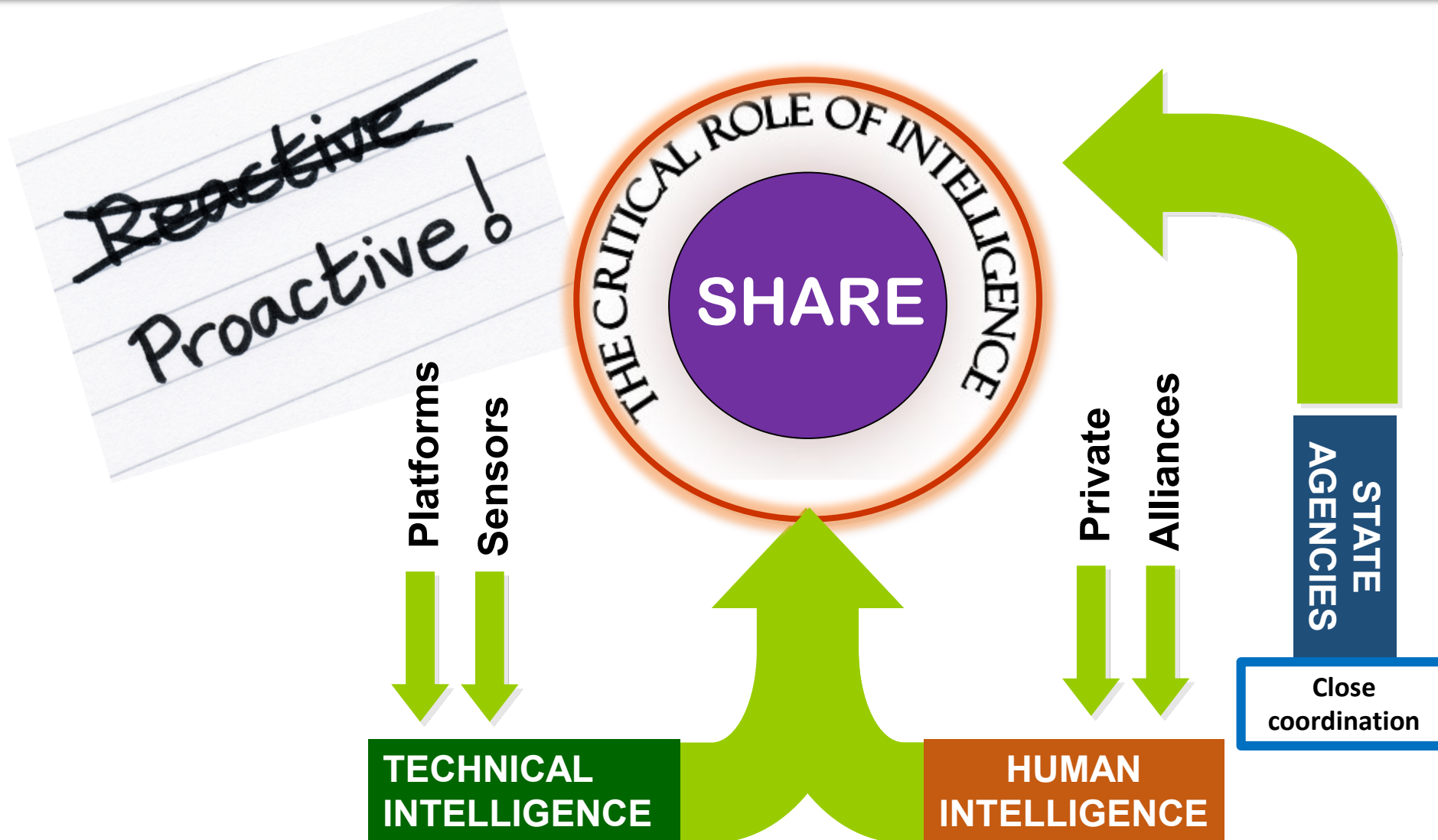
# Removing the cause



The best target for intervention is the **central grouping**



# Actionable Intelligence



# ENHANCING KNOWLEDGE AND SHARING DATA



increased use of  
CITES trade data to  
better understand  
trade dynamics

information  
sharing  
on regional, national  
and international  
scales

**CITES**  
Convention on International Trade in Endangered Species of Wild Fauna and Flora

**CITES Trade Database**

Please enter your search below:

**Year Range:**  
Select start (From) and end (To) years for your query. It is advisable to limit your data request to a year span not exceeding 5 years  
From 2018 To 2018

**Search Selection:**

Year Range:	From: 2018 To: 2018
Exporting countries:	All Countries
Importing countries:	All Countries
Source:	All Sources
Purpose:	All Purposes
Trade Terms:	All Terms
Species:	

[Search](#) [Reset](#)

Download: [A Guide to Using the CITES Trade Database](#)

The CITES Trade Database was developed and is maintained by UNEP-WCMC on behalf of the CITES Secretariat. :  
[CITES](#) | [UNEP-WCMC](#) | [Species+](#) | [Contact Us](#)

# DETAILED COUNTRY AND REGIONAL PROFILES

## COUNTRY TRADE PROFILE: DEMOCRATIC REPUBLIC OF THE CONGO

A summary of exports of CITES-listed species from Democratic Republic of the Congo to East and Southeast Asia between 2006–2015

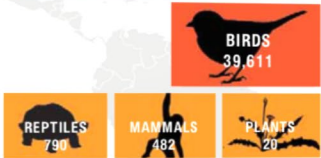
Democratic Republic of the Congo (DRC) was the largest African exporter of wild Grey Parrots to Asia: most of which were destined for Singapore. DRC also exported African Cherry bark and sawn wood from African Teak: almost all of which were imported into China.

### TOP 3 IMPORTERS OF LIVE SPECIMENS

Total number of individuals across all species



### LIVE SPECIMENS



### WOOD PRODUCTS



## COUNTRY TRADE PROFILE: MADAGASCAR

A summary of exports of CITES-listed species from Madagascar to East and Southeast Asia between 2006–2015

Madagascar was a significant exporter of live CITES-listed specimens: most were plants, reptiles or amphibians. Madagascar was the only exporter of live amphibians to Asia: a significant proportion of these were destined for Japan.

### TOP 3 IMPORTERS OF LIVE SPECIMENS

Total number of individuals across all species

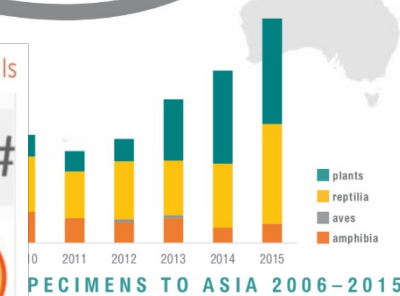
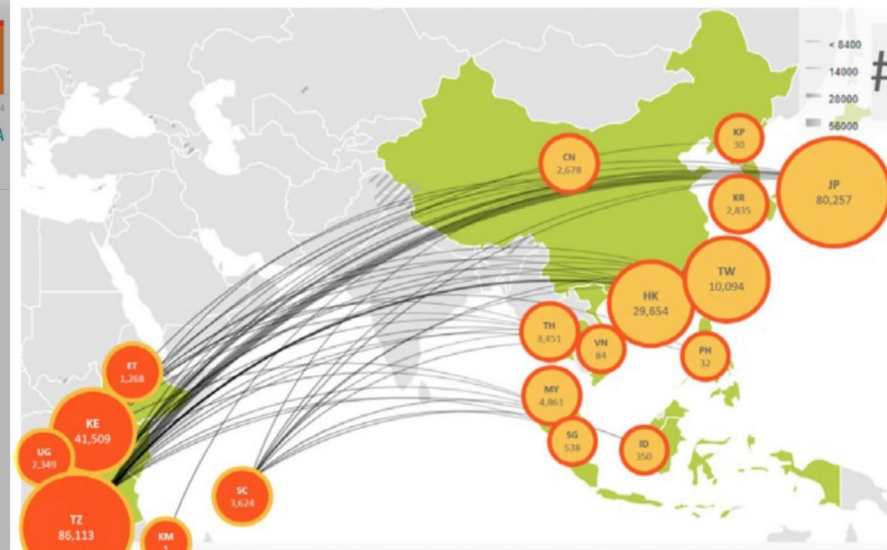


### LIVE SPECIMENS



20K

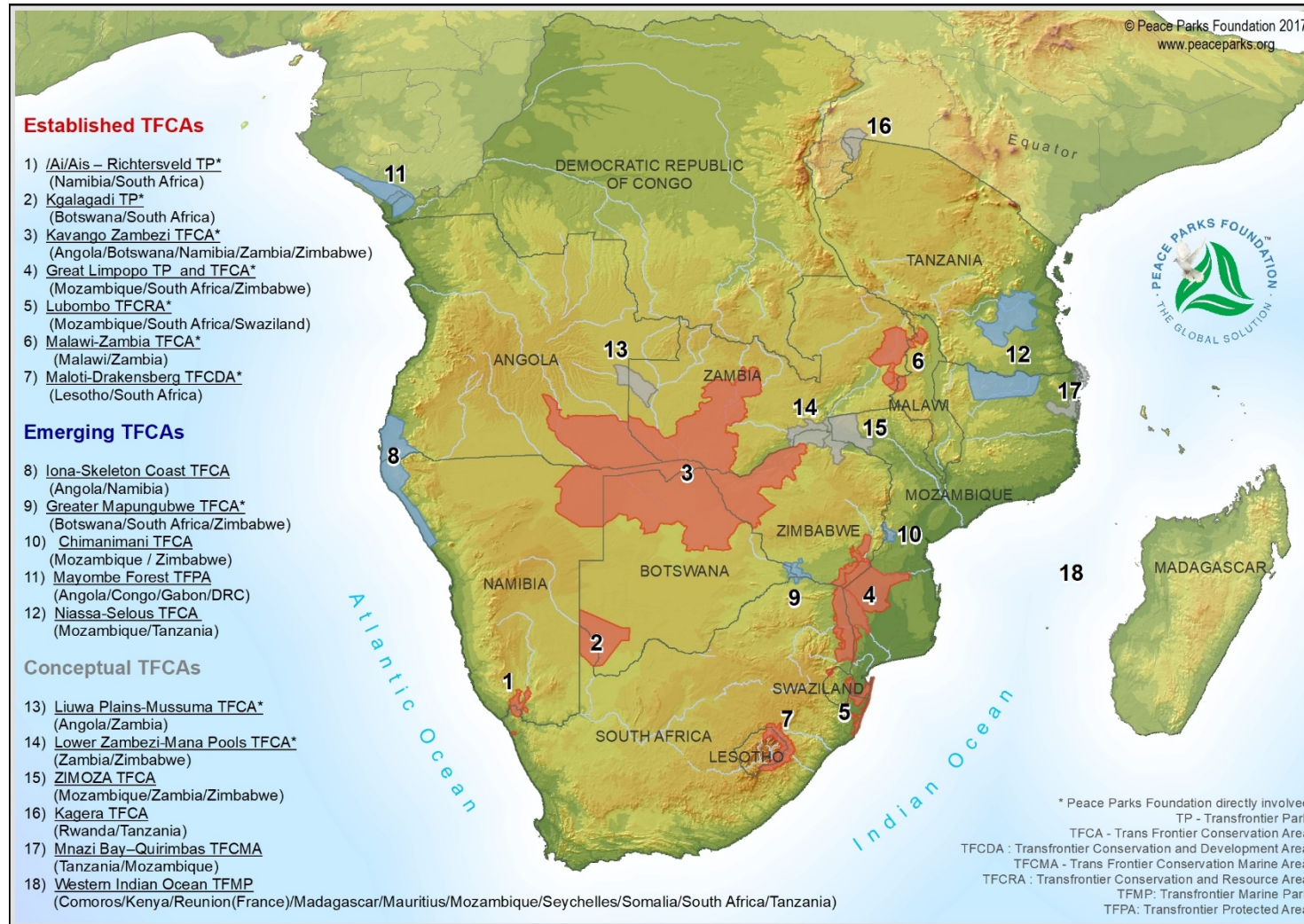
### No. of individuals



PECIMENS TO ASIA 2006–2015

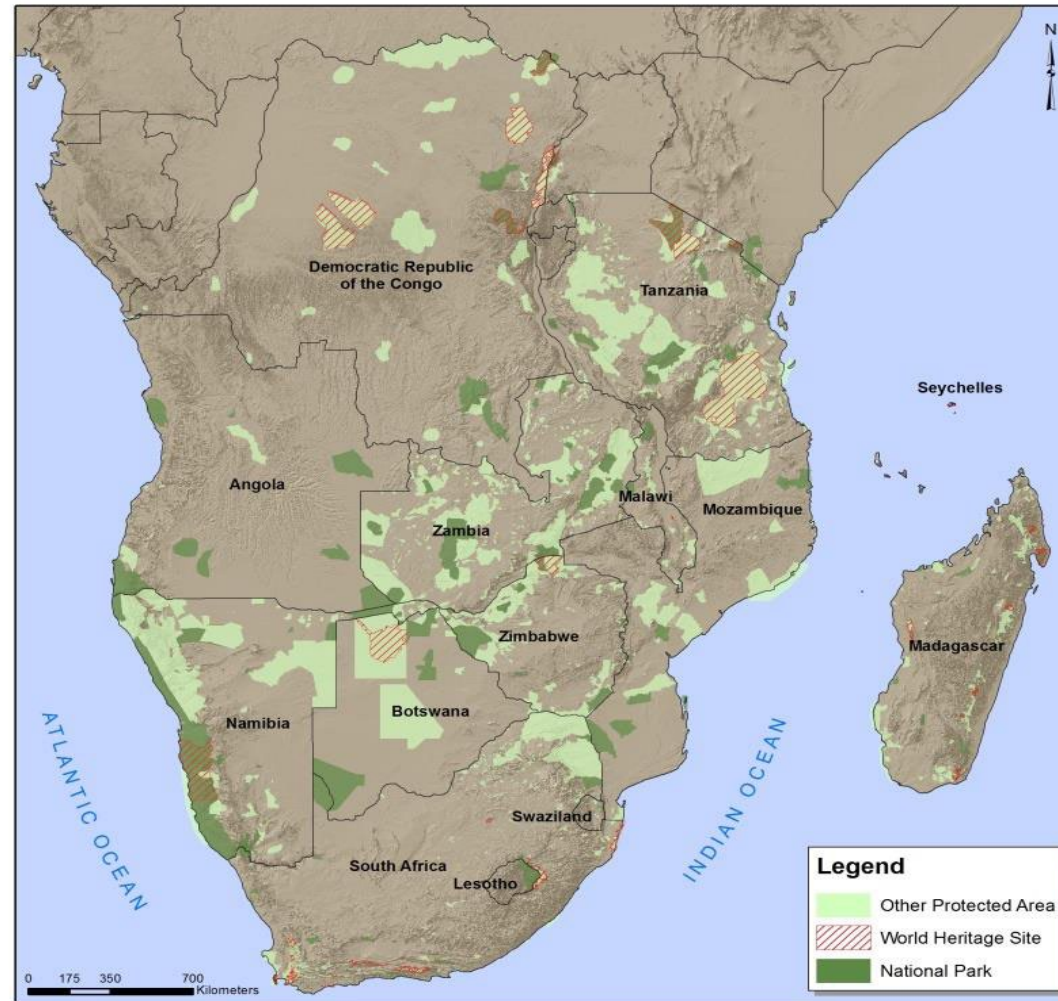


# Trans frontier (peace) parks

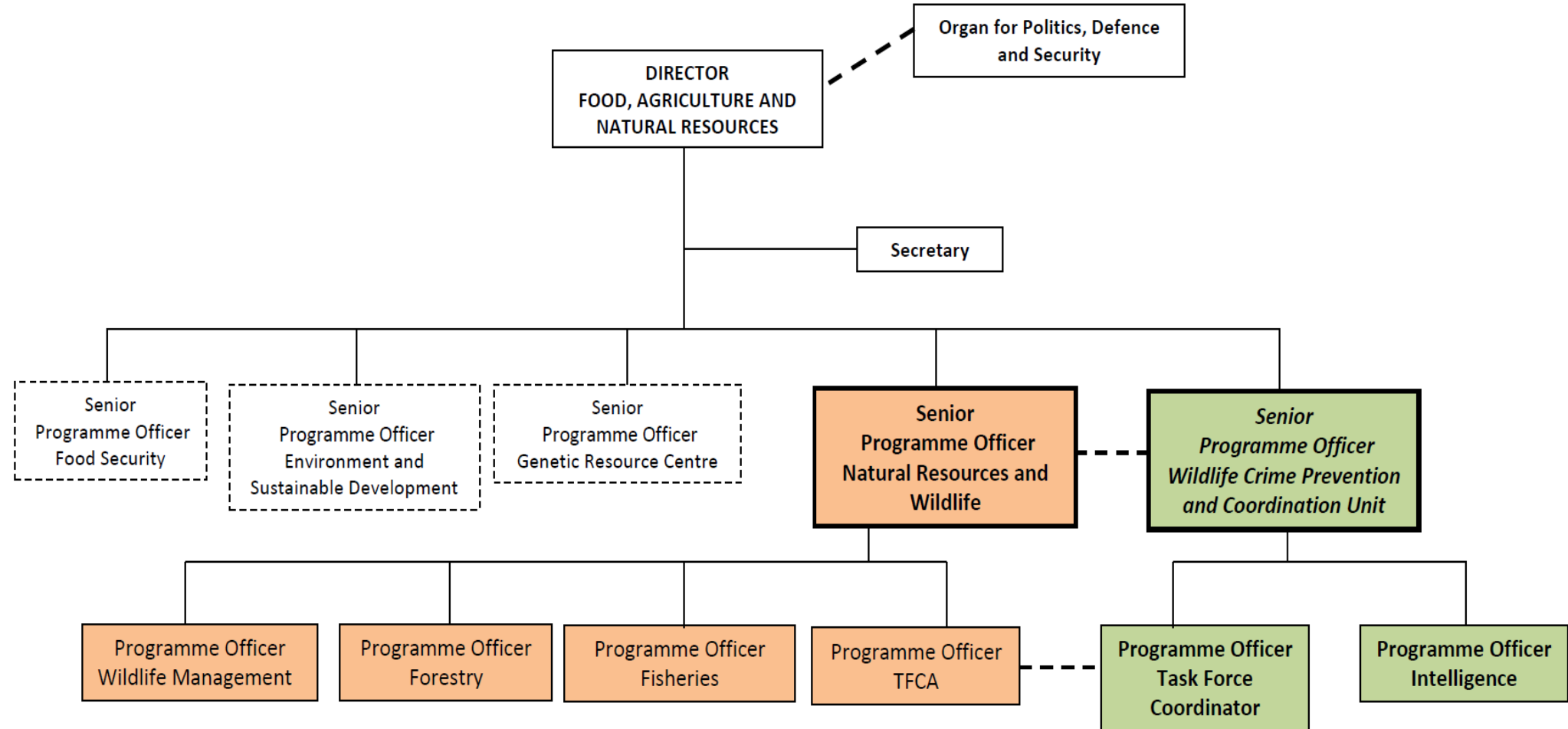




# Protected areas in Southern Africa



# Formal structures





# Law enforcement in conservation



## JOINT OPERATIONS CENTRE





# Informal structures



## NGO's



CONSERVATION  
INTERNATIONAL



## Private owners

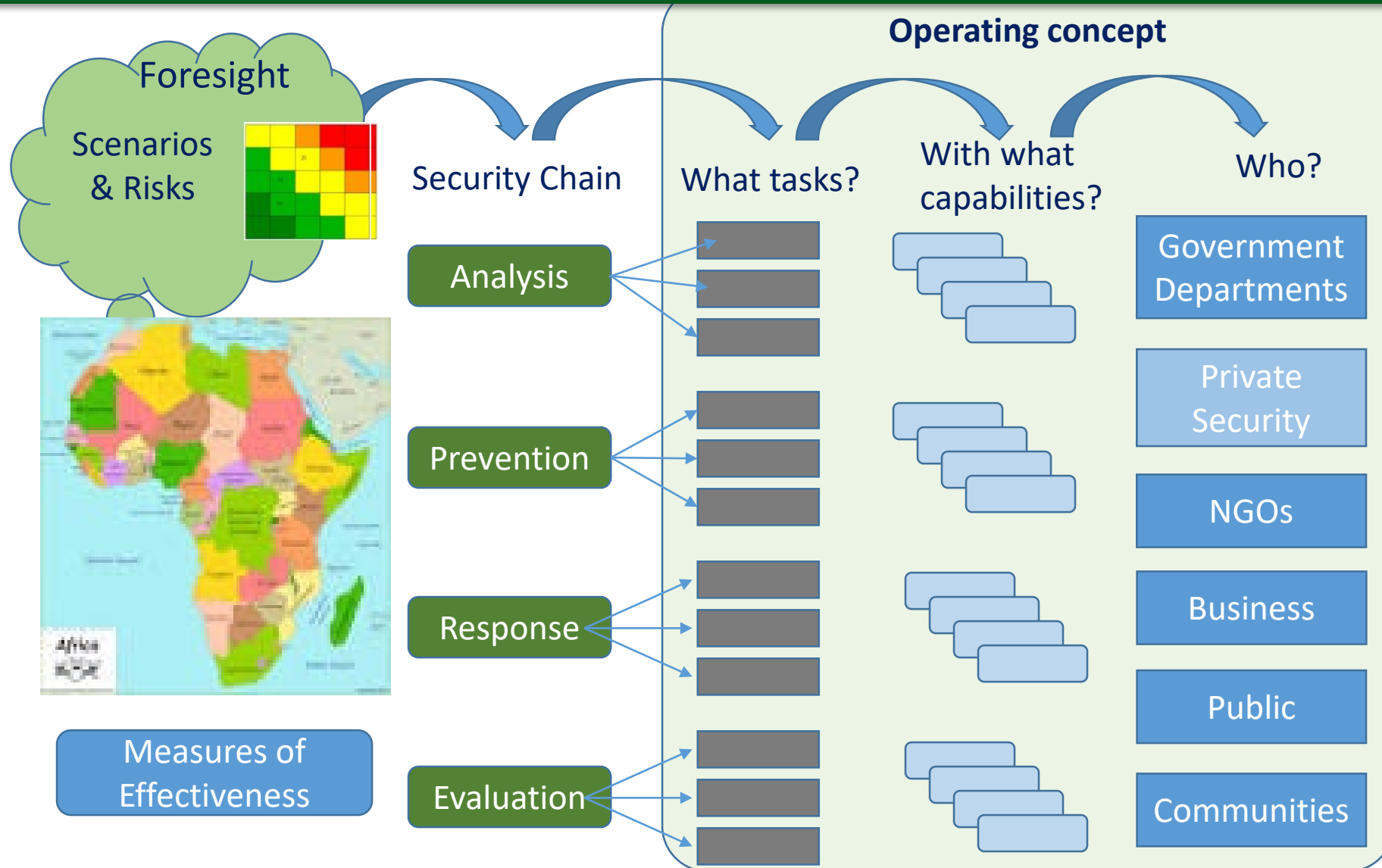


## Industry





# Whole-of- continent Approach



# Joint, Interagency, Multi National operations



## OPERATION THUNDERBALL 2019

Tackling illegal wildlife crime



**109** countries



**582** suspects arrested

**1,828** seizures including:



**545kg** ivory



**1.3t** pangolin scales



**9,777** live tortoises and turtles



**604t and 2,551m<sup>3</sup>** timber



**1.7t** plants



**4,304** live birds



**9,820** marine species



**1,422** live reptiles

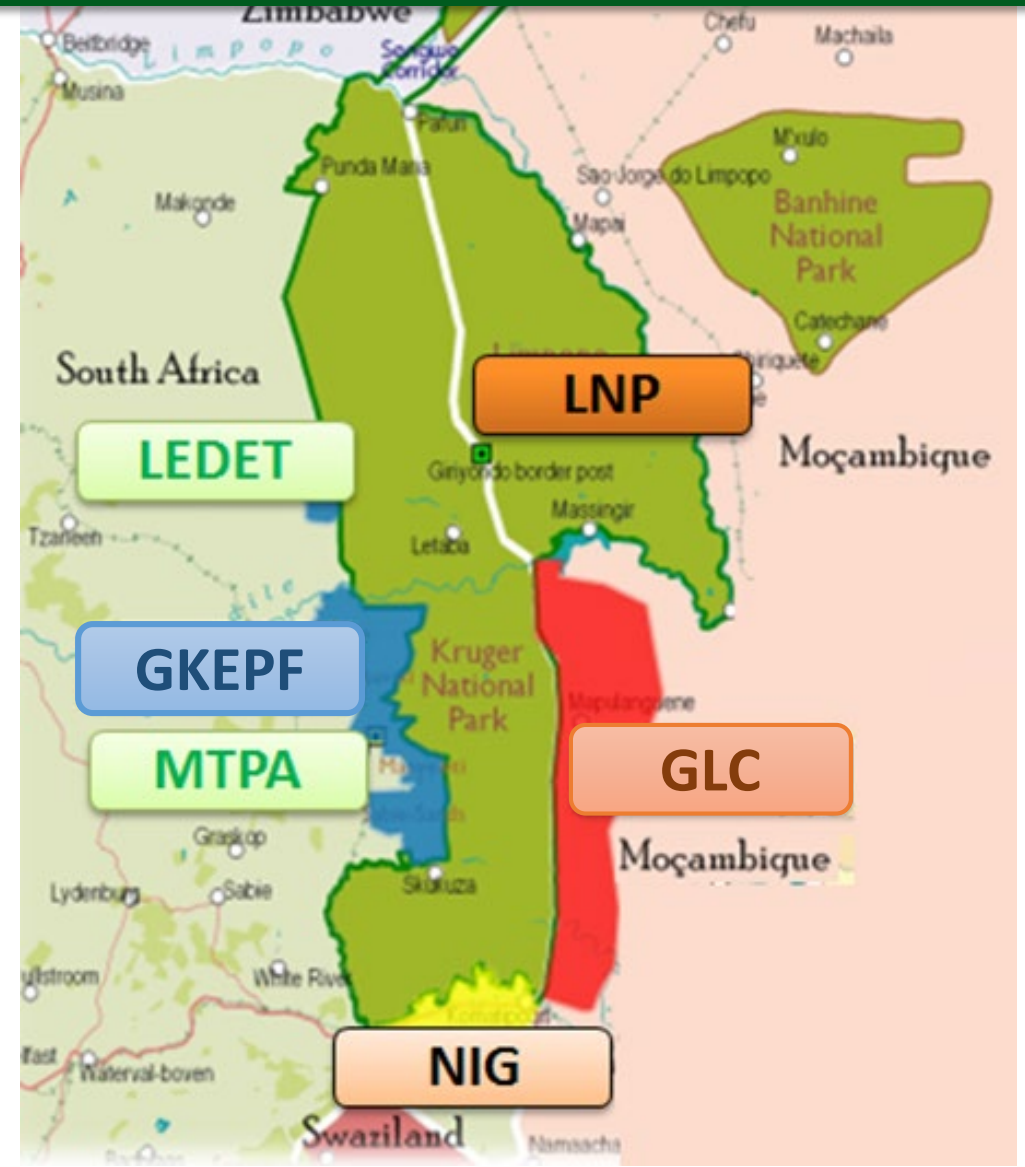


# Inclusive Approach

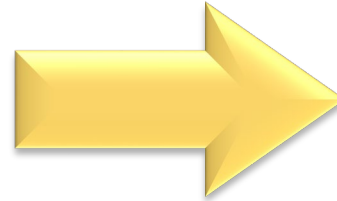
## Surrounded by Strategic Partners

- Urban & Rural Communities
- Private & Provincial Reserves
- Hotels, Lodges & Resorts
- Informal Settlements
- Farms & Businesses

KNP can only be cleared  
from the outside

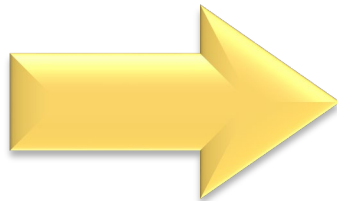


# Mozambique – A New Paradigm



## PREVIOUSLY:

- > “Shoot” ..... menatlity
- > Fence (*keep them out*)
- > Hot Pursuit



## NOW:

- > Rules of Engagement
- > Move the Fence
- > Joint Cross-Border Operations



**“Just hang in there” feeling**



# NEVER GIVE UP!

