

1 Broad BCom programmes

1.1 BCom General

1.2 BCom (Management Sciences)

- 1.2.1 BCom (Management Sciences): General
- 1.2.2 BCom (Management Sciences): Agricultural Economics focal area
- 1.2.3 BCom (Management Sciences): Entrepreneurship and Innovation Management focal area
- 1.2.4 BCom (Management Sciences): Financial Management focal area
- 1.2.5 BCom (Management Sciences): Human Resource Management focal area
- 1.2.6 BCom (Management Sciences): Information Systems Management focal area
- 1.2.7 BCom (Management Sciences): Logistics Management focal area
- 1.2.8 BCom (Management Sciences): Marketing Management focal area
- 1.2.9 BCom (Management Sciences): Public and Development Management focal area
- 1.2.10 BCom (Management Sciences): Quantitative Management focal area

1.3 BCom (Economic Sciences)

- 1.3.1 BCom (Economic Sciences): General
- 1.3.2 BCom (Economic Sciences): Econometrics focal area
- 1.3.3 BCom (Economic Sciences): Economic and Management Consultants focal area
- 1.3.4 BCom (Economic Sciences): Financial Sector focal area
- 1.3.5 BCom (Economic Sciences): Transport Economics focal area

1.4 BCom (Mathematic Sciences)

- 1.4.1 BCom (Mathematical Sciences): General
- 1.4.2 BCom (Mathematical Sciences): Computer Science focal area
- 1.4.3 BCom (Mathematical Sciences): Financial Risk Management focal area
- 1.4.4 BCom (Mathematical Sciences): Mathematical Statistics focal area
- 1.4.5 BCom (Mathematical Sciences): Operations Research focal area

1.5 BCom (International Business):

4-year programme that includes a 6-month international exchange.

2 Professional programmes

- 2.1 BAcc
- 2.2 BCom (Actuarial Science)
- 2.3 BCom (Financial Accounting)
- 2.4 BCom (Management Accounting)
- 2.5 BCom (Industrial Psychology)
- 2.6 BCom: Financial planning focal area
- 2.7 BCom: Investment Management focal area

3 Programmes that include studies in Law

Please note:

The Law Faculty selects students for these programmes.

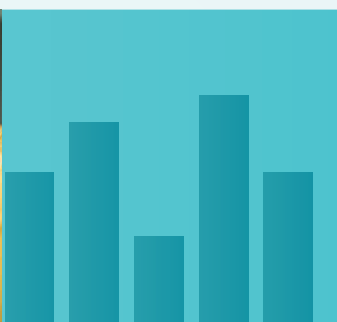
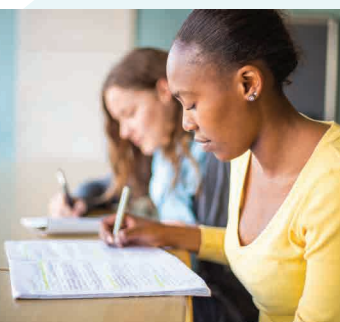
- 3.1 BCom (Law)
- 3.2 BAccLLB

4 Extended degree programme (four-year Bachelor's programme)

Please note:

Students cannot apply for this programme; placement is reserved for learners from previously disadvantaged school environments and is based on their Grade 12 Mathematics mark. Students who meet the BCom (Management Sciences) EDP admission requirements, should apply for the BCom (Management Sciences) programme.

- 4.1 BCom (Management Sciences) EDP
(Extended Degree Programme)



Admission requirements for undergraduate Baccalaureus degrees for 2016/2017

BCom,
BCom (Management Sciences),
BCom (Industrial Psychology) and
BCom (Economic Sciences)

Language: Combination of A & E; A+i; E+i

Overall NSC average of at least 60%, excluding Life Orientation
Mathematics 60%
Minimum EMS language admission requirements*

**BCom (Financial Accounting) and
BCom (Management Accounting)**

Language: A & E

Overall NSC average of at least 60%,
excluding Life Orientation
Mathematics 60%
Minimum EMS language admission
requirements*

BCom (International Business)

Language: E

Please note:

- This is a 4-year **selection** programme (including 6 months' international exchange), therefore other students cannot transfer to this programme.
- The admission requirements for 2017 are under review.
Overall NSC average of at least 60%, excluding Life Orientation
Mathematics 60%
English Home Language 60% **OR** English First Additional Language 70%

BCom (Mathematical Sciences)

Language: Combination of A & E; A+i; E+i

Overall NSC average of at least 60%, excluding Life Orientation
Mathematics 70%
Minimum EMS language admission requirements*

BCom (Management Sciences) Extended Degree Programme (EDP)

Language: Combination of A & E; A+i; E+i

Overall NSC average of at least 60%, excluding Life Orientation
Mathematics 50%
Minimum EMS language admission requirements*
Please note: Students cannot apply for this programme; students from disadvantaged school backgrounds are placed in this programme.

BCom (Actuarial Science)

Language: Combination of A & E; A+i; E+i

Please note: The admission requirements for 2017 are under review.

Overall NSC average of at least 70%, excluding Life Orientation
Mathematics 80%
English Home Language 60% **and** Afrikaans First Additional Language 60% **OR** Afrikaans Home Language 60% **and** English First Additional Language 60%

BAcc

Language: A & E

Overall NSC average of at least 70%, excluding Life Orientation
Mathematics 60%
Accounting 70% **OR** Mathematics 70%
Minimum EMS Language admission requirements*

BCom (Law)

Language: Combination of A & E; A+i; E+i

Overall NSC average of at least 70%, excluding Life Orientation
Mathematics 60%
Afrikaans Home Language 60% **OR** English Home Language 60% **OR** Afrikaans First Additional Language 70% **OR** English First Additional Language 70%

BAccLLB

Language: Combination of A & E; A+i; E+i

Overall NSC average of at least 70%, excluding Life Orientation
Mathematics 60%
Accounting 70% **OR** Mathematics 70%
Afrikaans Home Language 60% **OR** English Home Language 60% **OR** Afrikaans First Additional Language 70% **OR** English First Additional Language 70%

***Minimum EMS language admission requirements:**

Afrikaans Home Language 50% **OR** English Home Language 50% **OR** Afrikaans First Additional Language 60% **OR** English First Additional Language 60%

Programme

BAcc, BCom (Fin Acc), BCom (Man Acc)

All other programmes

Parallel medium (A&E specification):

Interpreting (A+i; E+i):

Please note:

- The language specifications of modules may change from time to time, with due allowance for registered students' language of choice and the availability of staff.
- For the language specifications of the various modules, see www.sun.ac.za/ems or the Calendar Part 10.
- Modules from another faculty will adhere to that faculty's language policy.

Language of instruction

These programmes are presented fully in parallel medium.

The **first-year modules** of all programmes are presented fully in parallel medium. In the **second and third years**, the language of instruction is either one of, or a combination of, the following: parallel medium, bilingual, and simultaneous interpreting into Afrikaans or into English.

Afrikaans and English classes are presented separately. Students select their language of choice at registration.

Simultaneous interpreting can be into Afrikaans or English, according to the language of instruction.

