

# GUIDE FOR NEWCOMERS 2018



UNIVERSITEIT  
iYUNIVESITHI  
STELLENBOSCH  
UNIVERSITY

100

1918 · 2018



Have you saved this on your cell phone?

### EMERGENCY NUMBERS: STELLENBOSCH CAMPUS

CSCD 24-Hour Crisis Service	010 205 3032 / 082 557 0880
Student Communities	021 808 2848
Risk Management and Campus Security:	
• Ops Room for general enquiries and the reporting of risks	021 808 4666
• 24-hour Emergency Line for the reporting of serious incidents and danger	021 808 2333
The Ombudsman	082 807 2994
Police Flying Squad	10111
Ambulance	084 124 (ER24) 082 911 (Netcare)
Medi-Clinic 24-hour emergency unit	021 886 9999

### EMERGENCY NUMBERS: TYGERBERG CAMPUS

CSCD 24-hour Crisis Service	010 205 3032 / 082 557 0880
Student Communities	021 808 2848
Risk Management and Campus Security	021 938 9507
The Ombudsman	082 807 2994
Police Flying Squad	10111
Ambulance	084 124 (ER24) 082 911 (Netcare)
Poison Information Centre	086 155 5777
Tygerberg Hospital	021 938 4911

### IMPORTANT NUMBERS: STELLENBOSCH CAMPUS

All Enquiries / Client Services	021 808 9111
Academic Affairs Council (AAC)	021 808 2493/2491
Admissions	021 808 9111
Bursaries and Loans	021 808 9111
Campus Health Services	021 808 3494/3496
Cape Institute for Agricultural Training: Elsenburg	021 808 5453
Centre for Student Communities (CSC)	021 808 2848
Centre for Student Counselling and Development (CSCD)	021 808 4707
Centre for Student Leadership and Structures (CSLS)	021 808 2312
Centre for Student Recruitment and Career Advice (CSRC)	021 808 4709
Connect office	021 808 3632
Corporate Communication	021 808 4977
Facilities Management	021 808 4666
Language Centre	021 808 2167
Library Enquiries	021 808 2486
Maties Sport	021 808 4642
Ombudsman	082 807 2994
Prim Committee	021 808 2493/2491
Risk Management and Campus Security	021 808 4666
Social worker	021 808 4994
Societies Council	021 808 2493/2491
Student Affairs	021 808 4585
Student Fees	021 808 4521
Stellenbosch Student Representative Council (SRC)	021 808 2493/2491
SU Gymnasium	021 808 4428

### IMPORTANT NUMBERS: TYGERBERG CAMPUS

All Enquiries / Client Services	021 938 9111
Academic Affairs Council (TAAC)	021 938 9591
Admissions	021 938 9378
Bursaries and Loans	021 938 9458/9129
Campus Health Services	021 938 9590
Centre for Student Counselling and Development (CSCD)	021 938 9590
Deputy Registrar	021 938 9379
Library Enquiries	021 938 9368
Marketing Office	021 938 9202
Maties Sport	021 938 9468
Ombudsman	082 807 2994
Prim Committee	021 938 9591
Risk Management and Campus Security	021 938 9507
Student Affairs	021 938 9461
Student Council	021 938 9591
Student Recruitment and Support Office	021 938 9789/9461
Tygerberg Gymnasium	021 932 2888
Tygerberg Hospital	021 938 4911



# CONTENTS

## STUDENT SERVICES

<b>STUDENT AFFAIRS</b>	2
PSO transport service during welcoming	2
Students with special learning needs (disabilities)	2
The welcoming period at SU:Your key to success	3
Join a listening, learning and living community	4
Centre for student counselling and development (CSCD)	5
<b>STUDENTS</b>	
Student representative council (SRC)	7
Academic affairs council (AAC)	7
Societies	7
Transport on SU campuses	8
Sustainability at SU	9
<b>INSTITUTIONAL INFORMATION</b>	
Notice regarding social media	10
Insurance: students and their property	10
Languages of tuition at Stellenbosch University	11
SU's values, human rights and protest action	12
<b>REGISTRATION</b>	13
<b>COMPUTER USER AREAS (CUAs)</b>	14
<b>SERVICES</b>	
Free writing advice	10
Take your safety seriously	15
Verification of international students' documents before registration for academic programmes	16
Library	16
Maties Sport	17
Campus health service	18
<b>NOTIFICATIONS</b>	
Construction on campus	19
Welcoming information champions	19
National Benchmark Tests (NBT)	19
Extended degree programmes	20
<b>FACULTY PROGRAMMES</b>	20
Economic and Management Sciences	21
AgriSciences	22
Engineering	23
Arts and Social Sciences	24
Law	25
Medicine and Health Sciences	26
Science	28
Education	29
Theology	30
<b>Save Water</b>	31
Main campus map	32
Tygerberg campus map	34

# STUDENT SERVICES



## STUDENT AFFAIRS

Welcome to Stellenbosch University (SU). It will be an exciting new chapter in your life and we are happy to be part of your journey. Take every event and training opportunity that the SU has to offer, and use the available support services and development opportunities to make a success of your studies.

The Division for Student Affairs is committed to play a key role in establishing and expanding a developmental, and enabling environment where all students can achieve their full potential.

The Division consist of three centres. These centres are the Centre for Student Communities (CSC), the Centre for Student Counselling and Development (CSCD) and the Centre for Student Leadership and Structures (CSLS). The Division is furthermore largely responsible for the coordination of welcoming new students.

Your cluster, residence or PSO ward will play an important role in how you take part and experience Stellenbosch. It must first be a place where you find ways of feeling at home and where you can engage with your academic activities in a focused way. Each residence and PSO ward has a residence head or PSO coordinator, a House Committee (HC) and a group of mentors to support you, and all of these people form part of a cluster where a ResEd coordinator is the head who guides you and fellow students in how to create supportive communities.

The welcoming programme is a fully integrated programme with academic, social as well as general aspects in the pursuit of a common goal – to let new students as soon as possible feel at home in our new environment and prepare them for successful study. Through this programme, we want every new student to have a meaningful and memorable welcoming – hence our dedicated pursuit and practice of the values of hospitality, friendliness and dignity.

We trust that your experience as a new student will be positive, enriching and unforgettable. Always remember that you have come here to be academically successful. As you pursue this part of your academic journey, choose from the menu of activities those that will contribute to your positive growth, academic success and total learning experience. And remember, we are all in this community together.

### General contact details:

Address: 15A Bosman Street, Stellenbosch

Tel: 021 808 9111

Email: [mjoyce@sun.ac.za](mailto:mjoyce@sun.ac.za)

Visit: [www.sun.ac.za/studentaffairs](http://www.sun.ac.za/studentaffairs)

## PSO TRANSPORT SERVICE DURING WELCOMING

Students who are allocated to Private Student Organisations (PSOs) are encouraged to take part in the welcoming programme of their specific PSO. As the programmes end in the evening, a free transport service is available to all PSO students to ensure they get home safely. The transport service leaves at exactly 19:00 and 21:00 from the PSO Hub, 11 Bosman Street, Stellenbosch and will get students safely to their homes in Stellenbosch and specifically indicated drop-off points in surrounding areas.

The drop-off points where students will be taken to, are the following:

- SAPS Offices: Bellville, Kuils River, Athlone, Mitchells Plain, Paarl, Somerset-West and Kayamandi
- De Zalze Golf Estate, Stellenbosch (gate)
- Paradyskloof, Stellenbosch (Engen garage)
- Sonnebloem Rd, Idasvallei, Stellenbosch (Brent Oil)
- Welgevonden Estate, Stellenbosch (gate)
- 87 Lang Street, Cloeteville, Stellenbosch (Engen garage)
- Stellenbosch central area, Stellenbosch

This service is only available during the welcoming period (24 January – 03 February 2018). Students must please indicate beforehand, by 19 January 2018, whether they would be using this service, as well as indicate the specific drop-off point. Please let your respective House Committee or the PSO office at [pso@sun.ac.za](mailto:pso@sun.ac.za) know.

## STUDENTS WITH SPECIAL LEARNING NEEDS (DISABILITIES)

### INFORMATION SESSION FOR STUDENTS WITH SPECIAL LEARNING NEEDS (DISABILITIES) AND THEIR PARENTS:

Students who have diagnosed disabilities that may need support or concessions such as extra writing time are invited to attend this information session to determine what support is available at the University during their studies.

This excludes information regarding the National Benchmarking Tests (contact [www.nbt.ac.za](http://www.nbt.ac.za) or 021 650 3523).

Stellenbosch students and their parents

**Date** Thursday 25 January, 12:30 – 15:00 (walk-in session)

**Venue** Room 357 (3rd floor), Arts and Social Sciences Building, corner of Merriman Avenue and Ryneveld Street

### EXTRA WRITING TIME (STELLENBOSCH CAMPUS)

**Please note** - The cut-off dates for applications for extra writing time for tests and examinations are: 12 February; 5 March; 26 March; 2 May; 13 August and 5 October (expect a response within 10 work days after each cut-off date).

**Enquiries** - Examination Office, Admin A (no 1 on the map), tel 021 808 9111 or email [skryftyd@sun.ac.za](mailto:skryftyd@sun.ac.za).

Application forms are available at [www.mymaties.com](http://www.mymaties.com) (exam and test information).

### EXTRA WRITING TIME (TYGERBERG CAMPUS)

**Please note** - Due to different time-tables, cut-off dates do not apply.

**Enquiries** - Examination Office, Ms Marilyn de Vries, tel 021 938 9309, Room 1050, Clinical Building (no 3 on the map).

# THE WELCOMING PERIOD AT SU: your key to success



## CONGRATULATIONS ON YOUR ADMISSION TO STELLENBOSCH UNIVERSITY!

We know you are not only coming here to get a degree, but also to enjoy this exciting period in your life to the full, and we are looking forward to receiving you on campus. Please read through this letter to get an idea of what to expect at Stellenbosch when you arrive on campus.

## WHY HAVE A WELCOMING PROGRAMME?

The welcoming programme introduces you to your residence, private student organisation (PSO), cluster and faculty so that you can find your feet in your new environment quickly. During the introduction to your residence or PSO ward you will meet the communities that you can join. Even though you will meet many first-year students in your residence or PSO ward during the welcoming period, your cluster in particular will open up new worlds and expose you to even more first-year students who might share the same values and interests as you.

You will visit the faculties together, so by the time you attend your first class there should be a few familiar faces already. The introduction to your faculty will equip you for the start of your academic career. By following your faculty's programme carefully you will ensure that you are ready for your first day of class.

Therefore, use the exciting welcoming period as an opportunity to think critically about your environment, fellow students and leaders.

Be the first to ask questions such as:

- Do the activities in the welcoming programme contribute to your development and preparation for the academic year ahead?
- Does the welcoming period expose you to a positive environment and positive relationships?
- Does the welcoming period offer you a chance to fully live out your values and interests?
- And particularly: Does the welcoming period help you to become the person you have always wanted to be?

## WHAT MAKES UNIVERSITY LIFE SO UNIQUE?

Now that you know what to expect of the welcoming, you also need to know what not to expect: a repetition of your school experience. University is a whole new ball game. University gives you an opportunity to expand your world and to discover and exploit countless possibilities. Whether you have just completed grade 12, or already have a gap year behind you, you can rest assured that your university experience will be incomparable with anything else. University is not only there to ensure that you grow academically, but also gives you a chance to explore other facets of your life. Here you will have the freedom to choose your friends and role models, and to try out activities that you may not have encountered before.



WELCOME!

Who knows, this might just be the beginning of an unforgettable journey of discovery! As long as you are prepared to work hard to make your dreams come true, you have the potential to be anything you want to be. Here you will have an opportunity to find your own voice so that you can participate in critical conversations on campus.

By now you have probably heard a lot about what you can expect from your first few days at university, but this is an opportunity for you to form your own ideas about the welcoming period. Remember, you do not have to accept everything passively; rather think critically about your experience of the welcoming programme.

## HOW CAN YOU MAKE IT UNIQUE FOR YOURSELF?

At Stellenbosch we believe that students are our knowledge partners. Your success at university therefore lies in your hands. Success at university does not, however, only mean successful completion of your studies, but also that you have grown and developed as a human being.

You have the opportunity to address the following critical questions to yourself and to your fellow students:

- What is important to you?
- Which aspects of yourself are you most keen to develop?
- Besides a degree, what else would you eventually like to leave with?
- What contribution would you like to make in your community?

You do not have to wait until 'one day'; start making a difference today! Embrace every opportunity to create memories with new and old friends and to learn new skills, even outside the lecture halls. Explore the world around you, but do not lose sight of the bigger picture. University is not only there for getting a degree or enjoying being young, but is also a chance to test your boundaries in a responsible manner and to broaden your horizons.

We hope you are looking forward to your time at Stellenbosch, because we are very excited about joining you on this journey.

**Embrace every  
opportunity to create  
memories with new and  
old friends and to learn  
new skills, even outside  
the lecture halls.  
Explore the world!**



# JOIN A LISTENING, LEARNING AND LIVING COMMUNITY

**ALL STELLENBOSCH CLUSTERS WILL MEET ON SATURDAY 27 JANUARY FROM 09:00 – 13:00**

New students join a campus that has been organised into listening, learning and living communities (LLL). All the clusters, residences, Private Student Organisations for non-residence students (PSO wards), mentor groups, tutor groups and the listening, learning and living houses for senior students form part of LLL. The purpose of LLL is to integrate the out-of-class experience with the in-class experience to ensure academic success and a well-rounded education for students.

## CLUSTERS

A cluster is made up of a number of residences that are geographically close to one another as well as a PSO ward or two. Clusters play a significant role in the integration and support of new students on campus and ensure that students experience the University as a caring and nurturing place. They also integrate the university experience of residence students, day students and students in private accommodation.

Mentors are appointed to support new students in adjusting to university life and are allocated in cluster context. Find out who your mentor is as soon as possible. Clusters are increasingly used as a way of organising the University, for example, Faculties now tend to employ clusters as a basis on which to form subject tutor groups.

The residences and the PSO wards belong to one of six clusters on Stellenbosch campus. Tygerberg campus forms a seventh cluster.

## CLUSTER MEETING (Stellenbosch campus)

Students (both residence and PSO) meet from 09:00 – 13:00 on Saturday 27 January in their clusters to learn how their social integration at the University could support their academic success. Students will meet others in their cluster who follow the same programmes and learn how they could become involved in the ResEd initiative as well as how their mentors could assist them. In addition, they will be introduced to the academic support groups at the University, such as the First-year Academy (FYA) and the Academic Affairs Council (AAC).

## HOW CAN PSO STUDENTS BECOME INVOLVED? (Private accommodation and day students)

All students who does not make use of the university's residence accommodation are automatically members of a Private Student Organisation (PSO) – approximately 70% of the University's students. These students are divided in different PSO wards which provide them with all the opportunities for successful social and academic integration on campus

The PSO ward does not provide accommodation for members, but amongst others PSO students can use their student cards to book and enjoy meals at an open residence dining hall in their particular cluster. The PSO assign a mentor to each new student who can assist them with all these processes.



There are ten PSO wards on Stellenbosch campus and one on Tygerberg campus. New students are divided into PSO wards in accordance with the university's placement policy. Students are notified about their PSO allocation per email and will also receive information regarding their PSO's welcoming programme as well as their meeting points during welcoming.

The PSO ward to which a student has been allocated also determines the cluster to which that student belongs. Should you not receive any notification of your PSO allocation, please contact Client Services on tel 021 808 9111 or [info@sun.ac.za](mailto:info@sun.ac.za).

## COMPOSITION OF CLUSTERS

<b>amaMaties</b>	Erica, Helderberg, Huis Neethling, Nemesia, Serruria and the PSO wards Equité and Libertas
<b>Rubix</b>	Heemstede, Metanoia, Nerina and the PSO wards Pieke and Venustia
<b>TygerMaties</b>	Hippocrates, Huis Francie van Zijl, Kerkenberg, Meerhoff, Ubuntu House and the PSO ward Osler
<b>Validus</b>	Academia, Botmashoogte, Concordia, Goldfields, Huis MacDonald, Huis Marais, Huis Visser, ISA, Lobelia, Nooitgedacht, Simonsberg and the PSO ward Olympus
<b>VicMeyr</b>	Dagbreek, Huis ten Bosch, Lydia, Majuba, Minerva and the PSO ward Aurora
<b>Victoria</b>	Harmonie, Huis de Villiers, Monica, Wilgenhof and the PSO wards Oude Molen and Silene
<b>Wimbledon</b>	Eendrag, Helshoogte, Irene, Russel Botman House, Sonop and the PSO wards Aristeia and Vesta

## KLUSTER VENUE ON CLUSTER DAY: 27/01/2018 9:00

<b>amaMaties</b>	Lawn in front of Erica, Nemesia and Serruria Ladies Residences
<b>Rubix</b>	Lawn in front of Nerina Ladies Residence
<b>Validus</b>	Lentelus Sport grounds and Goldfields
<b>VicMeyr</b>	The quad at Dagbreek
<b>Victoria</b>	Meet at Wilgenhof
<b>Wimbledon</b>	Each residence or PSO meet at their respective residence or PSO HUB and from there they will move to the different venues.

## CENTRE FOR STUDENT COUNSELLING AND DEVELOPMENT (CSCD)

The Centre for Student Counselling and Development is committed to providing the Stellenbosch University (SU) community with psychological, developmental and support services in our quest to be partners for success. Our vision is to be a centre that is approachable, inclusive and client-centred, with our values based on shared humanity. The staff includes psychologists (clinical, research, counselling, educational), a social worker, psychology interns, student assistants, project/portfolio coordinators, support officers and administrative staff. The CSCD consists of five units that through their core functions endeavour to promote citizenship by facilitating wellness, personal agency and sustainable equity.

**Address:** 37 Victoria Street, Stellenbosch

**Tel:** 021 808 4707 / 021 808 4994

Second floor, Student Centre, Tygerberg

**Tel:** 021 938 9590

**Website:** [www.sun.ac.za/cscd](http://www.sun.ac.za/cscd)

**24-hour crisis service:** 010 205 3032 / 082 557 0880

The following units are housed in five centrally situated buildings in Victoria Street:

### EQUALITY UNIT (EQU)

The Equality Unit (EqU) at the Centre for Student Counselling and Development welcomes you to Stellenbosch University. The Equality Unit promotes collective action towards social justice and discourse regarding social asymmetries at SU. We also coordinate, educate and raise awareness around sexualities, gender, HIV/Aids, and anti-discrimination in partnership with relevant campus structures.

Apart from the coordination and implementation of SU's policies on Unfair Discrimination and Harassment and HIV/Aids, the unit also plays a leading role in dealing with issues related to gender non-violence. We serve as a centralised one-stop service for students managing accounts of unfair discrimination and various forms of harassment. The Equality Unit offers walk-in services at 39 Victoria Street including free, quick and confidential HIV testing and counselling (email [hiv@sun.ac.za](mailto:hiv@sun.ac.za) for more information) or to lodge unfair discrimination-based matters (email [unfair@sun.ac.za](mailto:unfair@sun.ac.za) for more information). Our telephone number is 021 808 3136.

Should you experience any form of discrimination, harassment or victimisation from fellow university students or staff, you are encouraged to provide an official complaint report of the incident to our unit through the walk-in service.

Please follow us on Facebook and Twitter (@MatieSURpass) for updates and to keep in touch with us.

### UNIT FOR ACADEMIC COUNSELLING AND DEVELOPMENT (UACD)

The Unit for Academic Counselling and Development renders a development-directed service focusing on the academic challenges students may experience. The team comprises of educational psychologists, a psychometrist, as well as intern psychologists. Support is provided to students with regards to study methods, coping with

test and examination stress, time management and the optimisation of their potential by means of individual consultations, work sessions and self-help material. Career counselling for registered students are also available.

### UNIT FOR PSYCHOTHERAPEUTIC AND SUPPORT SERVICES (UPSS)

The Unit for Psychotherapeutic and Support Services offers individual, group therapy and work sessions. Confidential and professional services are offered. The unit offers psychotherapy for a broad spectrum of problems that students experience, namely: depression, high stress levels, adjustment problems, substance abuse, relationship or family problems, etc.

The unit has implemented screening sessions for the Stellenbosch campus students only to facilitate students who are experiencing psychological challenges. This service is offered daily from 11:00 – 12:30.

A 24-hour crisis service is also available for registered students from 16:00 – 08:00 as well as weekends.

Social Services (Social Worker) offer assistance to first-year students during the welcoming period with accommodation and food. Services offered during the course of the year are the Work Study Programme, social challenges for example, finance and food security in collaboration with the Bursary and Loans Office.

### DISABILITY UNIT (DU)

The Unit offers various services to students with disabilities or special learning needs. These services could include making texts accessible, processing of test- and exam concessions, as well as advice on innovative academic support which includes assistive technology. Work sessions are also presented.

### UNIT FOR GRADUAND CAREER SERVICES (UGCS)

The Unit provides student support with the transition from education to employment. This could include individual sessions about your career, work sessions on CV Writing, Interview Skills, your Online Profile and exposure to network opportunities with companies via career fairs and assistance with job-searching methods.

The UGCS has a new career services management system called MatiesCareers, which provides students with an easy way to search and apply for vacancies, internships, part-time work and volunteer opportunities. MatiesCareers will provide them with information about the Career Fairs and Work Sessions facilitated by the unit, affording them an opportunity to register and RSVP online. Students can also upload CV's for potential employers, search and view employers and stay connected with the Unit.



# STUDENTS' REPRESENTATIVE COUNCIL 2018



**CHAIRPERSON**  
Executive Committee  
LWANDO NKAMISA  
lwando@sun.ac.za



**VICE-CHAIRPERSON**  
Executive Committee  
WIANN BESTER  
besterw@sun.ac.za



**SECRETARY GENERAL & POLICY OFFICER**  
Executive Committee  
DENISHA PADACHEY  
dtp@sun.ac.za



**TREASURER**  
Executive Committee  
ZANDER PRINSLOO  
zanderprinsloo@sun.ac.za



**STRATEGIC INITIATIVES & LEADERSHIP DEVELOPMENT**  
Executive Committee  
BEN MOOLMAN  
bsmoolman@sun.ac.za



**TRANSFORMATION**  
ALUWANI RAMARUMO  
alur@sun.ac.za



**COMMUNICATIONS**  
LEIGHTON SEPTEMBER  
leightonseptember@sun.ac.za



**AAC CHAIRPERSON**  
EUWEN ETSON  
euwen@sun.ac.za



**SOCIETIES CHAIRPERSON**  
HANNAH LESTER  
hannahl@sun.ac.za



**STUDENT SUCCESS**  
Executive Committee  
THANDILE LUCAS  
thandile@sun.ac.za



**PC VICE-CHAIRPERSON & SAFETY**  
MINETTE SIEBERHAGEN  
minettes@sun.ac.za



**SUSTAINABILITY & INNOVATION**  
OMRI JACOBZ  
omri@sun.ac.za



**PC CHAIRPERSON**  
BOBBY WESELS  
bobby@sun.ac.za



**Website:**

English - [www.sun.ac.za/src](http://www.sun.ac.za/src)

Afrikaans - [www.sun.ac.za/sr](http://www.sun.ac.za/sr)

**Office:** 3rd floor the Neelsie

**Tel:** 021 808 2491/93 | **Email:** [sr@sun.ac.za](mailto:sr@sun.ac.za)



INCLUSIVE. INNOVATIVE. FUTURE-FOCUSED.

FLTR Chitsadi Thulare, Fatima Mazari, Tevarus Naicker, Raven Hannes, Kevin Oira, Ilana van Niekerk, Chiara Africa, Vukosi Baloyi, Taryn Simeon, Eduard Roos FRONT: Thula Makhoba, Lebogang Mohlala, Sinethamba Toyo



TEVARUS NAICKER  
Chairperson  
SRC  
Executive Committee Chair  
tsrchair@sun.ac.za

KEVIN OIRA  
Media & Marketing  
rmarketing@sun.ac.za

FATIMA MAZARI  
TSC Chairperson  
tschair@sun.ac.za

SINETHAMBA TOYO  
Vice Chairperson  
Portfolio Manager  
Executive Committee  
tsrvice@sun.ac.za

VUKOSI BALOYI  
Student Services  
Sport

ILANA VAN NIEKERK  
TAAC Chairperson  
tabrchair@sun.ac.za

LEBOGANG MOHLALA  
Financial Manager  
Culture  
Executive Committee  
lebom@sun.ac.za

THULA MAKHOB  
Student Development & Wellness  
Policy Unit  
tgbstudentwellness@sun.ac.za

CHITSADI THULARE  
PK Chairperson  
Guardians  
pkchair@sun.ac.za

CHIARA AFRICA  
Secretary  
Prestige  
Executive Committee  
tsrsecretary@sun.ac.za

TARYN SIMEON  
Social Impact  
Critical Engagement  
Policy Unit  
tarynsocrit@sun.ac.za

EDUARD ROOS  
TPSC Chairperson  
tpschair@sun.ac.za

RAVEN HANNES  
Student Services  
Sustainability  
Executive Committee  
raventsr@sun.ac.za

TYGERBERG CAMPUS |  
TYGERBERG STUDENT  
CENTRE  
Room 2005, 1ST Floor  
Tel: +27 21 931 1921  
Fax: 0867216116  
Website: [www.sun.ac.za/tsr](http://www.sun.ac.za/tsr)



## STUDENT REPRESENTATIVE COUNCIL (SRC)

The Student Representative Council (SRC) of Stellenbosch University is responsible towards representing and assisting all students during welcoming, the registration period and during their term of office. We are fortunate to have within our ranks students who have served on all the student leadership structures within the university, enabling us to ensure student success holistically.

- The SRC participate actively in the welcoming programme by recruiting and training students to act as SRC assistants to assist all students with inquiries.
- The SRC support all students who are unable to either pay the initial residence fee or who have historical debt and cannot afford to register for the academic year. This falls within the Register All project which contains a fixed amount allocated within the SRCs budget.
- The SRC, the Academic Affairs Council (AAC), Societies Council

and the Prim Committee (PC) collaborate throughout the welcoming programme to ensure that all students are well informed and supported leading up to the first academic day.

- The SRC and the AAC, assist students who are academically excluded and who are awaiting appeal notification during January. Students are welcome to visit the SRC office for any support during this time to ensure that student success and wellbeing are promoted.
- The SRC and the PC ensure that students who have not been placed in residences and are struggling to find accommodation will be given temporary accommodation during the welcoming period.

The SRC represent all students as the highest student representative and decision-making body at Stellenbosch University and look forward to welcoming all newcomers to our beautiful campus.

## ACADEMIC AFFAIRS COUNCIL (AAC)

The primary responsibility of the AAC is to represent and protect your academic affairs as student.

Luckily for you this includes:

- academic complaints
- language issues
- HEMIS
- test or timetable clashes
- plagiarism issues

- problems with lecturers, mentors, tutors or tut classes

If you have any problems affecting your academics, we are the ones you want to talk to. Contact us or visit our Facebook page: <https://www.facebook.com/abrstellenbosch?fref=ts> for more details.

Or send an email to the chairperson, Euwen Etson at [euwen@sun.ac.za](mailto:euwen@sun.ac.za).

## SOCIETIES

The societies at Stellenbosch University make up the largest and most diverse out-of-class activities on campus. This means just about everything from dancing to community work, from sexuality to religion and from nationalities to debating!

The societies offer you everything you could want to have outside of class:

- it is a way to meet new people and make friends with others that have the same interests as you;
- give outlet to your passions, whether for animals, children, people, philosophy or community interaction;

- gain new skills and run courses to further yourself; and
- join a community that can offer you friendship and support.

So, have a look in the back of the Matie Diary, go to our website at <http://www.sun.ac.za/english/students/student-societies/Pages/About.aspx> or send an email to the chairperson, Hannah Lester at [hannahl@sun.ac.za](mailto:hannahl@sun.ac.za) for more information.

Remember to visit the Societies fair on **Friday 26th January**.



# TRANSPORT ON SU CAMPUSES

Get from point A to point B in and around campus without using motor vehicles. This reduces carbon emissions which are detrimental to the environment. There is also definitely not enough parking space available for all the vehicles.

## Transport on Stellenbosch campus

### Walk



Along various pedestrian routes.

### Cycle



Use a Matie Bike or your own bicycle. Register for free to access SU bicycle sheds.

### Use the campus shuttle



Various shuttle services are available. Make sure you choose the right one.

### Join an existing lift club



Or create your own lift club.

You will save money and protect the environment, and won't have to search for parking on campus.

### Parking



Parking is limited. If you have no other alternative than motor vehicle transport, please apply for access parking.

#### Day shuttle:

Operates from Monday to Friday between **07:00 and 17:30**.

Fixed times and routes, with fixed pick-up and drop-off points as indicated on the website below.

Between general parking areas on periphery of campus and central campus.

#### Evening shuttle:

For students who study until late at night. Operates from Monday to Sunday on the hour between **18:00 and 02:00**.

From the main entrance of the Neelsie, within a 6 km radius to private housing in the broader town.

NB: Book your trip online at [www.sun.ac.za](http://www.sun.ac.za) > My.SUN > Services > Reservations: Shuttle Service

#### Shuttle service between the long-term parking area and residences:

Available to residence students from Monday to Friday.

Travel **ONLY** between long-term parking area and residences.

Schedule during the **day**: **07:30, 13:30 and 16:00**.

**In the evening** the first trip departs at **18:45**, then every hour until **01:45**.

Residence students can **ONLY** use the service if they are registered for long-term parking. Register at [www.sun.ac.za/sustainability](http://www.sun.ac.za/sustainability) > Transport.

Show student card.

Visit [www.sun.ac.za/sustainability](http://www.sun.ac.za/sustainability) > Transport for the route map.

Visit [www.sun.ac.za/mobility-shuttles](http://www.sun.ac.za/mobility-shuttles)

## Transport on Tygerberg campus

### Walk



Along various pedestrian routes.

### Join an existing lift club



Or create your own lift club.

You will save money and protect the environment, and won't have to search for parking on campus.

### Shopping centre shuttle service



The shuttle runs to a nearby shopping centre from Monday to Thursday at fixed times.

Book your trip at [www.sun.ac.za](http://www.sun.ac.za) > My.SUN > Services > Reservations: Shuttle Services.

### Parking



Parking is limited. If you have no other alternative than motor vehicle transport, please apply for access parking.

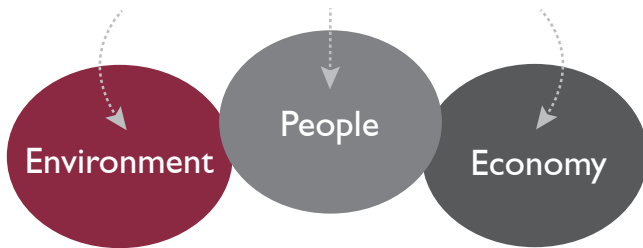
# SUSTAINABILITY AT SU



UNIVERSITEIT  
iYUNIVESITHI  
STELLENBOSCH  
UNIVERSITY

100  
1918 - 2018

## SUSTAINABILITY IS A CORE SU FOCUS AREA



WASTE

Reduce  
Re-use  
Recycle



Use the three-bin system on campuses for non-recyclable, recyclable and compost/food waste.

## WHAT'S HAPPENING:

- More than **80%** of the waste at three campuses is sorted for recycling.
- Left-over food from kitchens and the cafeterias is treated and used as compost.
- Rooms in residences have one bin per bed for recyclable waste.
- Zero-waste events take place on campus.

Various modes of transport available on campuses to reduce carbon emissions and alleviate parking problems.



TRANSPORT



**Walking:** Use the safe pedestrian routes.



**Cycling:** Rent a Matie Bike or bring your own and cycle where you want to be.



**Campus shuttle service:** Use the campus shuttle service on specific routes.



**Lift clubs:** Travel together instead of using your own transport.



ENERGY

## OBJECTIVES SET FOR ACHIEVEMENT IN 2022:

- Reduction in the total greenhouse gases and carbon emissions at SU.
- Improved energy efficiency per unit on all campuses.
- Using renewable sources for energy generation.

## Various actions already in place on campuses to save energy:

- Energy saving light bulbs in some buildings.
- Smart monitoring of energy consumption of buildings.
- The use of plants and special building materials in some buildings to regulate the temperature.
- Light sensors that switch on the lights only when movement is detected have been installed in some buildings.

## SU ALREADY HAS A RANGE OF SUSTAINABLE WATER-SAVING INITIATIVES. HERE ARE A FEW OF THEM:



Water leakages are continuously repaired by the water warrior team.



Water-permeable paving and grass squares are used, where possible, so that rain water can penetrate the soil and replenish the underground aquifers.



Water-efficient equipment, such as water-saving shower heads, tap aerators and toilet cistern displacement devices, is currently being installed on our campuses.



Water-hardy plant species, including local endemic species that require less water, are systematically planted.



WATER

Visit [www.sun.ac.za/sustainability](http://www.sun.ac.za/sustainability) for more information and to see what you can do to help.



## NOTICE REGARDING SOCIAL MEDIA

### IMPORTANT NOTICE REGARDING THE USE OF SOCIAL MEDIA BY STELLENBOSCH UNIVERSITY STUDENTS AND STAFF

Stellenbosch University (SU) recognises the importance of the internet and social media<sup>1</sup> in shaping public thinking about our University and our services, students, staff and stakeholders. SU also recognises the importance of our students and staff engaging in and helping to stimulate conversation through interaction in social media. Students and staff are encouraged to interact online about SU matters and developments in higher education. However, it is important to understand that **the use of social media as a communication channel is subject to existing SU policies and procedures**, specifically the:

- Disciplinary Code for Students of Stellenbosch University (applicable to students)
- Policy on Unfair Discrimination and Harassment (applicable to staff and students)
- Electronic Communications Policy (applicable to staff and students)

All students and staff are responsible for their own compliance with these policies and should take the time to read and understand these. Behaviours such as misconduct, harassment and victimisation conducted online are addressed in these policies. Any form of online bullying, verbal abuse, defamation, slander and/or name-calling, among others, falls into the same category as face-to-face communication and written communication.

Allegations of online misconduct, harassment and victimisation are regarded just as seriously as similar actions through traditional verbal and written communication. An aggrieved party may report such behaviour (e.g. misconduct, harassment or victimisation through any of the social media channels) to the **Equality Unit**, which may refer matters to Student Discipline (for students) or Human Resources (for staff) as necessary.

The Equality Unit's contact details are:

- [unfair@sun.ac.za](mailto:unfair@sun.ac.za)
- 021 808-3136
- 39 Victoria Street, Stellenbosch

The Corporate Communication Division is developing a comprehensive Social Media Policy but until the policy has been completed, the rules in existing policies and this notice will apply.

*Issued by the Senior Director: Corporate Communication  
10 February 2017*

<sup>1</sup> "Social media" is defined as any mobile or web-based application or service that allows the creation and exchange of user-generated content, such as a blog, wiki, social network and other interactive websites. Examples of social media platforms include, but are

## INSURANCE: STUDENTS AND THEIR PROPERTY

### "A safe campus for all"

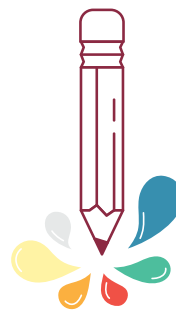
– these words give expression to a core aspiration of Stellenbosch University (SU). Not only does SU conduct a continuous campaign to make staff, students and visitors aware of potential risks that may threaten their safety and/or health, but where necessary, Risk Management and Campus Security is made use of, as well as the South African Police Service, to continually enforce and monitor security measures.

Students participate in academic trips, laboratory experiments, sport and other voluntary activities where they can be exposed to risks. The University takes all reasonable measures to protect students and their property when they participate in these activities and during their daily campus life. It is however impossible to eliminate all risks.

Since it is not possible for the University to protect students and their property against all risks, students therefore participate in all University related activities on their own risk.

The University does not take out personal insurance against accidents, medical insurance or any other insurance on behalf of students. The University would like to draw attention to the fact that each student is responsible for his/her own insurance and therefore recommends that he/she takes out sufficient comprehensive insurance for his/her personal possessions, as well as insurance against accidents and/or medical insurance.

## FREE WRITING ADVICE



**Do you need a bit of extra help with your writing assignments? Are there writing issues you struggle with?**

The Writing Lab of the University's Language Centre offers a free one-to-one consultation service to all students and staff of the University. For students who would like support or advice on their writing, friendly, trained consultants can assist with any assignments. If you struggle to get started on assignments or worry that your ideas are not clear and do not flow well, you will get guidance at the Writing Lab. You will be supported to improve and sharpen your writing skills, and your improved skills definitely lead to better marks.

A consultation session is 50 minutes long, but you are encouraged to come for follow-up consultations until you are satisfied with your writing. We do not do editing at the Writing Lab, but rather advise you on how to improve your text. Our aim is to equip you as a writer with writing skills which you can use in other writing tasks. Consultation appointments can be made 48 hours in advance online through KENAKO, the Writing lab's electronic appointment system, on MyMaties, or at the Language Centre at 44 Banghoek Road.

Contact Anne-Mari Lackay or Vinelene Hartley for more information at **021 808 2989/2161** or [amlackay@sun.ac.za](mailto:amlackay@sun.ac.za) / [vhartley@sun.ac.za](mailto:vhartley@sun.ac.za). For information about other services please visit our website at <http://www0.sun.ac.za/languagecentre>.

# LANGUAGES OF TUITION AT STELLENBOSCH UNIVERSITY

Stellenbosch University (SU) is committed to knowledge exchange in a diverse society and, through its Language Policy, seeks to extend fair access to SU to all students and staff. Multilingualism is an important differentiator for SU, where Afrikaans, English and isiXhosa are used in academic, administrative, professional and social settings. [More information on language usage at SU is available on the website at www.sun.ac.za/language.](http://www.sun.ac.za/language)

## LANGUAGE POLICY

Stellenbosch University accepted a new Language Policy in 2016. This policy and the language implementation plans that go with it have been implemented since the beginning of 2017.

Every faculty compiles its own Language Implementation Plan. The policy and plans will ensure that no student who has yet to master Afrikaans or English on an academic level will be excluded from academic tuition.

## WHAT CAN YOU EXPECT?

For undergraduate modules, Afrikaans and English are the languages of teaching and learning, and are used in a combination of the following modes:

- Facilitated learning opportunities (lectures, tutorials and practicals)
- Learner support via information and communication technologies (ICTs) such as video or audio recordings (podcasts)
- Real-time interpreting of some lectures.

Where classes are large, an effort will be made wherever possible to offer separate lectures in Afrikaans and English. When students from both language groups are studying the same module, both groups will participate in group work, class assignments, tutorials and practical sessions, the aim being to stimulate frank debate and a diversity of ideas and viewpoints.

Where Afrikaans and English are used in the same lecture, all information will be conveyed in at least English, with a summary or notes of key points in Afrikaans as well. Questions will at least be answered in the language in which they are asked. In your first year, real-time interpreting will be another possible form of support where practical. In some sessions, for example field work or computer literacy, interpreting would not be feasible. In your second and subsequent years, interpreting could be provided at the request of your faculty.

Undergraduate lectures may only be offered in one language when the learning material warrants this, the lecturer concerned can only teach in that language, or the class votes unanimously for one language. For first-year students at least, real-time interpreting into the 'other' language will be available.

- The language mode for each of your academic modules will be explained in the module framework concerned, as well as on your faculty's webpage.

## THE SUPPORT YOU WILL RECEIVE

Further support in Afrikaans or English is available to students through consultations during office hours, scheduled tutorials and practicals, ICT-supported learning (audio and video recordings), and the services of the Language Centre.



All compulsory reading material will be provided in English and, except for published material, also in Afrikaans. SU's module frameworks and study guides will still be available in English and Afrikaans. In undergraduate modules, question papers for tests, examinations and other assessments will be prepared in Afrikaans and English, and students may complete all assessments and written work in Afrikaans or English. The multilingual model supports Afrikaans first-year students who have not yet mastered academic English. In their final year of study, through the academic support that is available, these students should be able to participate nationally and internationally.

## HELP EACH OTHER TO SUCCEED

The Language Policy is not ideologically motivated. It does not accord any special status to any of South Africa's official languages, and the language allocation is not based on a given percentage of lecture time per language. SU believes that multilingualism is an additional asset for any graduate. The intention is rather to use the languages of tuition in practical ways that will ensure no one is excluded from knowledge, that no one language is forced on students, and that students are encouraged to learn additional languages.

The implementation of multilingualism is complex and there is no universal quick fix. The language proficiency of a particular group of students is the biggest variable – it will differ from module to module, and from year to year. Therefore language application should be flexible to adapt to changing needs. Feedback to lecturers is important. Share examples of successful language implementation and make suggestions for improvement with a positive and helpful attitude.

Where students believe that language usage is jeopardising their study success, or that they are being excluded from the academic offering on the basis of the language of tuition, the matter can be taken up in the department or faculty, or through the faculty's representatives on the Academic Affairs Council that operates under the auspices of the Student Representative Council. If the matter cannot be satisfactorily resolved through the internal processes, students can approach the university ombud at [ombud@sun.ac.za](mailto:ombud@sun.ac.za).

# SU'S VALUES, HUMAN RIGHTS AND PROTEST ACTION

Stellenbosch University (SU) welcomes open dialogue and wishes to encourage a culture of frank debate on our campuses. Engagement and dialogue should be integrated into all aspects of campus life: in class discussions, over a cup of coffee in student hubs, all clusters and in living areas. Students should think critically about the challenges and issues of our society. This is how thought leadership is developed – an important attribute of our graduates.

## PROTEST ACTION

SU acknowledges the right of students and staff to participate in protest action, provided the academic and administrative activities of the institution are not disrupted; students, staff and university property are not threatened; and the right of other students to access academic activities and facilities is not violated. Vandalism, arson, intimidation and violence are strongly condemned and the SU does not hesitate to act against anyone who displays illegal or unacceptable behaviour.

Apart from SU's own application processes for student gatherings, petitions and protest marches on campus, such matters are also regulated by legislation, and permission must be obtained timeously from local municipalities and the South African Police Service.

## HOW TO REPORT ISSUES OR COMPLAINTS

Mass meetings or protest action attract media coverage and briefly focus attention on the issues concerned but do not lead to sustainable solutions. Students are therefore encouraged to use the various internal processes and systems to report issues, complaints or grievances. The Academic Affairs Council, a body of the Students' Representative Council, has student representatives in each faculty, and in the social context, the clusters and student residences have student leaders who can support students. Students can also approach the Student Affairs division at [studentaffairs@sun.ac.za](mailto:studentaffairs@sun.ac.za).

Should a matter not be satisfactorily resolved via internal processes or systems, students can use the following reporting mechanisms:

### • Ombud

SU has an independent ombud who looks into the problems and complaints of students, students' parents or staff when these cannot be satisfactorily resolved through university structures or where existing structures are found lacking.

#### Adv Rina Meyer

[ombud@sun.ac.za](mailto:ombud@sun.ac.za)

Contact number: 0828072994

Office address:

Lutz Building, 11 Victoria Street, Stellenbosch

For appointments: Michelle Jooste at [joostem@sun.ac.za](mailto:joostem@sun.ac.za)

### • Ethics helpline

For some years, SU has subscribed to an independent ethics reporting service for the anonymous reporting of irregularities. This service is independently managed by Deloitte.

Tel: 0800 204 549

Fax: 0800 007 788.

Email: [sun@ethics-line.com](mailto:sun@ethics-line.com)

Web: [www.tip-offs.com](http://www.tip-offs.com)

### • Equality Unit

Incidents of unfair discrimination, victimisation, sexual harassment and other forms of harassment can be reported to the Equality Unit at [unfair@sun.ac.za](mailto:unfair@sun.ac.za). Please take note of the Policy on Unfair Discrimination and Harassment.

## DISCIPLINARY CODE FOR STUDENTS

When signing the SU application form, students undertake to familiarise themselves with all the rules, regulations, policies, prescriptions and the Disciplinary Code for Students. Should a student be charged with transgressing any of these, he or she cannot plead ignorance as a defence.

The Disciplinary Code for students states that an individual is guilty of misconduct when, among other things, he/she wrongfully violates another person's fundamental rights as set out in the Bill of Rights, chapter 2 of the Constitution, 1996, or acts in conflict with any other South African laws or SU rules, regulations or prescripts. This includes hate speech, sexual harassment, victimisation, violence or incitement, unacceptable or improper behaviour, the humiliation of fellow students or staff, and assault. Thus, use your own good judgment and act responsibly, especially when using the social media. Please familiarise yourself with the notice regarding the use of social media.

Although legislation, policies, guidelines and codes are necessary to ensure order in society, SU strives to create a welcoming campus culture through shared values.

## SU'S VALUES

### EXCELLENCE

Excellence characterizes everything we do.

### SHARED ACCOUNTABILITY

We realise and accept that in the interests of the stakeholders we serve, we are jointly responsible for achieving the University's vision.

### EMPATHY

We promote human dignity through a culture and behaviour that are respectful - self-respect, respect for other people and respect for the physical environment.

### INNOVATION

We think and act in new and different ways and make better choices and decisions for ourselves and for our stakeholders, the country, the continent and the planet.

### LEADERSHIP IN SERVICE OF OTHERS

We promote the welfare of people and the world by leading with humility, responsibility and understanding.



## TWO WAYS TO REGISTER AS STUDENT

There are two different options available for you to officially register as a student of Stellenbosch University in January 2018. The one is self-registration (e-registration), and the other one is by using the registration process in NARGA on the Stellenbosch campus, or GERGA on the Tygerberg campus for students in the Faculty of Medicine and Health Sciences.

If you have done the National Senior Certificate or the IEB-certificate, you will be able to register yourself. Candidates from other school systems cannot make use of self-registration. It will, however, be beneficial if candidates from other school systems can send their final school results, as well as the certificate of university exemption that must be obtained from the SA Matriculation Board, to [info@sun.ac.za](mailto:info@sun.ac.za). Your student number must be supplied as well.

It is important that you carefully read the **notice on registration** that will be sent to you separately via email by the Registrar of the University before the end of the year. All the information that you need to decide whether you want to register yourself, or whether you rather want to register in NARGA (GERGA at the Tygerberg campus) during the welcoming programme, will be given in the notice. All the necessary dates, times, documentation required and other important information will be contained in the notice. **Self-registration by first-year students can be done from 12 January up to the time slot that they will have to register in NARGA or GERGA.**

Self-registration can be done from any computer with access to internet on [www.maties.com](http://www.maties.com). We wish to urge you to use this option, as you will know before leaving for Stellenbosch whether you meet the admission requirements of the study programme to which you were provisionally admitted to and, if so, that you were finally accepted and registered as student. You will then just have to acquire your **student card** at the **Student Centre (Neelsie) in Stellenbosch**, in the time slot determined for your faculty's registration in NARGA, or in GERGA if you are at Tygerberg. **It is, however, important that you attend the full welcoming programme.**

If you cannot or do not want to register yourself, you must carefully read the **notice on registration** that will be sent to you via email before the end of the year, to ensure that you report for registration at the right date and time at NARGA or GERGA, with all the necessary documents that are required (see further on for documents required). GERGA-registration at the Tygerberg campus is scheduled for **Friday 26 January** and NARGA-registration at the Stellenbosch campus per faculty and allocated to time slots for **Monday 29 and Tuesday 30 January**. Please note that first-year students who have not registered on these dates and who obtain special permission to register (the programme for which you want to register might already be full), will have to register later in the course of that week in NARGA together with the senior students of their faculty. First-year students, who register later than that, will be charged a levy of R500, on condition that the relevant Faculty Administrator has granted permission for late registration.

If you do not register yourself before you arrive in Stellenbosch or at Tygerberg, it is your responsibility to ensure that you comply with all the admission requirements of your study programme before you leave for Stellenbosch. If you are going to register in NARGA or GERGA, you

must show the following **original documents** when you report for registration in your faculty's allotted registration time slot:

1. Advice of Results of the 2017 NSC or IEB final school-leaving examination.
2. NSC or IEB candidates who matriculated in 2016 or earlier: National Senior Certificate.
3. Candidates from other school systems: School-leaving certificate/s and certificate of university exemption issued by the SA Matriculation Board.
4. Candidates who studied at other universities: The document/s mentioned at 2 or 3 above, as well as a full academic record and a certificate of good conduct issued by the university concerned.
5. If you are not a South African citizen: a valid study permit.

Please take note of the notice regarding the writing of the National Benchmark Tests.

## REGISTRATION SCHEDULE 2018

### FRIDAY 26 JANUARY

Registration of all new first-year students of the Faculty of Medicine and Health Sciences (who could not register themselves via [www.maties.com](http://www.maties.com))

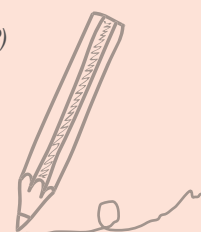
<b>09:00 – 09:30</b>	Francie van Zijl Residence
<b>09:30 – 10:00</b>	Kerkenberg and Meerhoff
<b>10:00 – 10:30</b>	Hippokrates
<b>10:30 – 11:30</b>	Osler (Private Students' ward)
<b>Venue</b>	Venues as indicated in registration booklet.
<b>14:00 – 16:00</b>	Registration of new first-year students for B of Occupational Therapy and B of Speech-Language and Hearing Therapy who could not register themselves via <a href="http://www.maties.com">www.maties.com</a>
<b>Venue</b>	Ms Zenda Jansen, room A3008, Admin, Stellenbosch campus

### MONDAY 29 JANUARY

<b>08:00 – 09:00</b>	Education
<b>08:30 – 09:30</b>	Engineering
<b>09:00 – 10:30</b>	Law LLB, BCom (Law), BAccLLB, BA (Law)
<b>10:30 – 11:30</b>	Theology
<b>10:30 – 11:30</b>	AgriSciences
<b>13:30 – 15:00</b>	Science
<b>14:30 – 16:00</b>	Economic and Management Sciences BAcc, BCom (all programmes, including EDP)

### TUESDAY 30 JANUARY

<b>08:00 – 11:30</b>	Arts and Social Sciences
----------------------	--------------------------



## COMPUTER USER AREAS (CUAs)



### COMPUTER USER AREAS (CUAs)

Students also register at the computer user areas.

To be able to register:

- you must take note of the University's Electronic Communications Policy at <http://www.sun.ac.za/ecp/>;
- you must already be registered as a student;
- your student card must be activated and magnetised, and you must have your card with you;
- you will need your student number;
- you will need the letter or sms containing your password that you received in the mail; and
- you MUST know your student number and your ID number

### COMPUTERS ON CAMPUS

- Students may connect their own computers to the University's campus network, subject to certain conditions.
- For all computer and IT-related information, please visit our website at <http://www.sun.ac.za/ITHUB> or send an email to [helpinfo@sun.ac.za](mailto:helpinfo@sun.ac.za).

To avoid long queues, there is a remote registration process that may be followed for all private pc's. For more information, follow this link:

<https://stbsp01.stb.sun.ac.za/innov/it/it-help/Wiki%20Pages/Student%20Private%20Computer.aspx>



## CUA – INFORMATION

### FHARGA

<b>Where?</b>	Van Der Sterr building, c/o Victoria & Bosmanstreet and CJ Langenhoven Student Centre Level 1 (Neelsie)	
<b>For whom?</b>	Faculty of Economic & Management Sciences	
<b>www?</b>	<a href="http://www.sun.ac.za/english/faculty/economy/ebsk">http://www.sun.ac.za/english/faculty/economy/ebsk</a>	
<b>Who's there?</b>	<b>Neelsie: Manager:</b>	Johan van Rooyen, Room E9.2, tel 021 808 4113
	<b>Chief Technical Officer:</b>	Chris Bosman, Room E8.2, tel 021 808 3436
	<b>Assistant Technical Officer:</b>	Thurlo Muller, Room E7.2, tel 021 808 3829
	<b>Van Der Sterr Building: Technical Officer:</b>	Remé du Plessis, Room 3053, tel 021 808 3433

### FIRGA

<b>Where?</b>	Civil Engineering Building General use area: Room S303, Third floor Electronic Classrooms: Rooms S203 & S207, Second floor	
<b>For whom?</b>	Fakulteit Ingenieurswese	
<b>www?</b>	<a href="http://www.firga.sun.ac.za">http://www.firga.sun.ac.za</a>	
<b>Who's there?</b>	<b>Manager:</b>	Andre du Toit, Room S205, tel 021 808 3562, <a href="mailto:adt@sun.ac.za">adt@sun.ac.za</a>
	<b>Junior Technical Officer:</b>	Bennie Lindoor, Room S303, tel 021 808 4415, <a href="mailto:bennie@sun.ac.za">bennie@sun.ac.za</a>
	<b>Junior Technical Officer:</b>	Quinton Hendrikse, Room S203, <a href="mailto:qlh@sun.ac.za">qlh@sun.ac.za</a>

### HUMARGA

<b>Where?</b>	Arts Building, Third floor, Merriman Avenue	
<b>For whom?</b>	Arts and Social Sciences, Education, Law and Theology faculties as well as blind and partially sighted students of all faculties	
<b>www?</b>	<a href="http://www.sun.ac.za/humarga/">http://www.sun.ac.za/humarga/</a>	
<b>Who's there?</b>	<b>Manager:</b>	Jan Louw, Room 301, tel 021 808 2128, <a href="mailto:jlo@sun.ac.za">jlo@sun.ac.za</a>
	<b>Assistant manager:</b>	Petro Newman, Room 301, tel 021 808 2128, <a href="mailto:pa@sun.ac.za">pa@sun.ac.za</a>
	<b>Helpdesk:</b>	Room 306, tel 021 808 2129, <a href="mailto:humarga@sun.ac.za">humarga@sun.ac.za</a>

### NARGA

<b>Where?</b>	NARGA A, B & Open Area: Admin A NARGA D: Geology building NARGA E, F, G & H: Natural Sciences building, Third floor	
<b>For whom?</b>	Science and AgriSciences faculties	
<b>Email?</b>	<a href="mailto:narga@sun.ac.za">narga@sun.ac.za</a>	
<b>Who's there?</b>	<b>Manager:</b>	Ilse de Kock, Room 2016, Al Perold Building, tel 021 808 2682
	<b>Technical Officer:</b>	Johan van Rooyen, Admin A, room 2092, tel 021 808 2203 (Service Desk and User Support)
	<b>Senior Technical Officer:</b>	Brandon April, Admin A, room 2091 tel 021 808 2562 (Windows Software)
	<b>Chief Technical Officer:</b>	Paul Erasmus, Room 3007, Natural Science, tel 021 808 2698 (Linux System Administrator)



## TAKE YOUR SAFETY SERIOUSLY

Students should take the same safety precautions in Stellenbosch than elsewhere in South Africa. Thousands of mobile phones, computers and vehicles attract criminals.

Follow these tips:

- Never walk alone, especially at night. Plan to walk in groups, use the shuttle service or request security to escort you.
- Keep your phone and valuables out of sight of other people.
- Carry a whistle and pepper spray at all times to be able to draw attention if needed. Criminals hate attention.
- Choose the safest route, even if it is not the shortest. Victoria Street and Bosman Street need to be the core of your route.
- Avoid isolated areas, especially when you exercise early in the morning or late in the afternoon.
- Be conscious of your environment, as criminals prefer to target someone not aware of his/her direct surroundings.
- Keep a safe distance if a motorist asks for directions.
- If you suspect that someone might be following you, change direction.
- Be a caring Matie: accompany a friend.
- Property on a car seat is tempting to a thief. Lock it in the boot.

**SAFETY ESCORT AT NIGHT:** If you need to move between campus buildings, or from a building to your car after dark (20:00 – 05:00), a security officer will escort you. Call 021 808 2333 or alternatively 021 808 4202 and wait for the officer to join you. You can also Whatsapp the security office at 082 808 2333 to contact you. Unfortunately no voice calls to this number is possible.



**SAFEST ROUTES:** Bosman and Victoria streets are the safest routes. At night a security officer is on duty in the mobile security kiosk.

**SHUTTLE SERVICE:** On weekdays the shuttle service runs from 07:00 to 17:30 on a fixed schedule from the general parking area on the edge of the campus to central campus (refer to [www.sun.ac.za/mobility-shuttles](http://www.sun.ac.za/mobility-shuttles)). At night it runs on the hour from 18:00 to 02:00 from the Neelsie parking area at the main entrance to the Neelsie (east side).

The buses run up to a 6 km radius from the central campus. This service is available from Monday to Sunday during class and exam periods. You need your student card to make use of this service. Visit the safety website for updates.

**EMERGENCY NUMBERS** (save these numbers on your mobile phone)

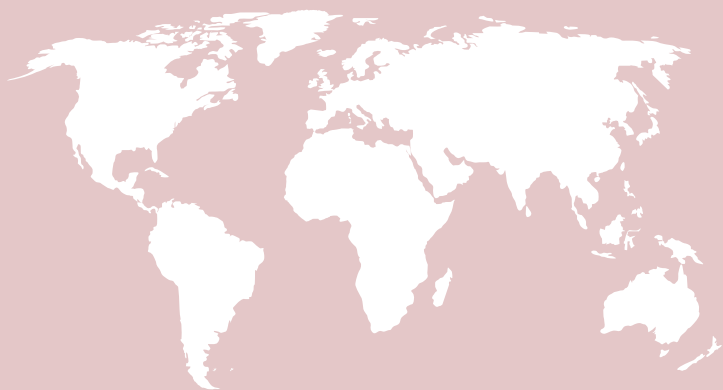
Stellenbosch campus 24-hour emergency number: 021 808 2333  
Enquiries / reporting / safety escort: 021 808 2333 or alternatively 021 808 4202

Tygerberg campus 24-hour emergency number: 021 938 9507

Whatsapp: 082 808 2333

[www.sun.ac.za/safety](http://www.sun.ac.za/safety)





## LIBRARY

**Library orientation** is offered in the Stellenbosch University Library on **29 and 30 January** to familiarise new students with the following aspects of the library:

- Librarian: meet yours
- First-years information on the library website
- First-years assignments: "assignment step by step"
- Learning commons: "bib" place for first-years

**PARTICIPANTS OF THE ORIENTATION PROGRAMME STAND A CHANCE TO WIN PRIZES.**

## VERIFICATION OF INTERNATIONAL STUDENTS' DOCUMENTS BEFORE REGISTRATION FOR ACADEMIC PROGRAMMES

(UNDERGRADUATE & POSTGRADUATE DEGREE-SEEKING)

The verification of documents for Undergraduate and Postgraduate Degree-seeking International students will take place from Monday 22 to Friday 26 January 2018 at the RW Wilcocks building, Crossley Room 1023.

### Students must present the following documentation:

- Valid study visa
- Valid passport
- Proof of South African medical cover
- Proof of full payment (tuition fees, International Registration Fees [IRF], International tuition fees, academic service fees)

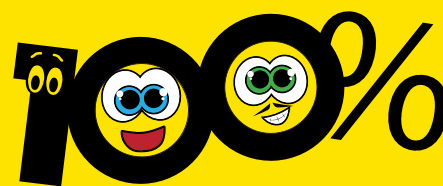
**PLEASE NOTE:** All first-year undergraduate students do not need to apply for their matriculation exemption certificate prior to registration of the 2018 academic year; however, you need ensure you meet the exemption requirements by sending your final results to Ms Talmarkes at [ctalmarkes@sun.ac.za](mailto:ctalmarkes@sun.ac.za), in order to obtain confirmation that registration will be in order.

### CONTACT DETAILS:

**Undergraduate:** Ms Carmelita Talmarkes  
Tel: +27 21 808 2910  
Email: [ctalmarkes@sun.ac.za](mailto:ctalmarkes@sun.ac.za)

**Postgraduate:** Mrs Cindy de Doncker  
Tel: +27 21 808 2566  
Email: [cnm@sun.ac.za](mailto:cnm@sun.ac.za)  
[pges@sun.ac.za](mailto:pges@sun.ac.za) (when documents are attached)

**PLEASE NOTE:** All international undergraduate first-year students registering for degree programmes need to follow the same welcoming programme as the SA students as per the following link: [www.sun.ac.za/welcome](http://www.sun.ac.za/welcome).



**100% on the ball  
@ library.sun.ac.za  
Ons sit die bal aan die rol**

Answer a question correctly after the presentations of an orientation video about the Library and Information Service and stand a chance to

**WIN A PRIZE!!**

Beantwoord 'n vraag korrek na afloop van 'n oriënteringsvideo oor die Biblioteek - en Inligtingsdiens en staan 'n kans om 'n

**PRYS TE WEN!!**

**LIBRARY ORIENTATION  
BIBLIOTEEKORIËTERING  
29 - 30 JAN 2018**

Orientation programmes are also presented at the following libraries: Theology, Music, Engineering and Forestry, Medicine & Health Sciences. The orientation is followed up the next week with individual training under the title **GetSmart@URLibrary**.

We would like to invite all parents of first-year students to visit Stellenbosch University Library during welcoming to see the facilities and services available to Matie students. Visit our prestigious Africana room, see the Learning Commons and the E-classroom. The Library is dedicated to support the academic endeavour of our students. Our E-collection include all subjects both national and international.

Faculty programmes indicate the dates and times of library visits!

**Enquiries:** Pieter du Plessis

Tel: 021 808 4882 | Email: [pdupless@sun.ac.za](mailto:pdupless@sun.ac.za) | [www.sun.ac.za/library](http://www.sun.ac.za/library)





## You! Yes, you!

Are you considering joining a sport club at Stellenbosch University? Maybe you're worried that you won't have time? We're here to tell you that you'd be missing out of a number of benefits and a lot of fun if you don't join!

Maties Sport believes sport is a great contributor towards student success – regardless of whether you are a high-performance athlete or someone who just wants to be active and healthy.

Participation in sport teaches self-discipline and time management and offers crucial outlets for stress and tension. Both competitive and recreational sport provide students with opportunities to socialise, develop friendships and maintain a healthy and balanced lifestyle. Maties Sport accepts co-responsibility for the optimal holistic development of student-athletes and the empowerment of high-performance athletes.

For this reason, Maties Sport invests in its high performance sport codes as well as its recreation and active lifestyle programme – offering ALL students the opportunity to engage in a healthier and happier lifestyle.

Maties Sport offers 30 sport codes, making it easy to find a sport that suits your needs and skills level.

High performance sport codes are: rugby, hockey, netball, football, athletics, swimming, cricket, cycling and basketball. Recreation and active lifestyle sport codes are: tennis, table tennis, squash, badminton, golf, gymnastics, rowing, canoeing, sailing, underwater sport, water polo, surfing, judo, kendo, taekwondo, equestrian, ultimate (frisbee), fencing and chess. Volleyball and cheerleading were recently added to this list. The Maties Parasport Club also offers athletics, swimming, cycling, wheelchair rugby and goal ball for people with disabilities.

You'll have the opportunity to participate in regional, national and even international competitions, such as:

- Varsity Cup, Varsity Sports, Intervarsity and USSA competitions;
- Regional and local leagues and competitions;
- Residence leagues and competitions.

Only an elite few will be selected for a Varsity Cup or Varsity Sports team, but that's no reason to be left out. The spotlight falls as much on the fans as the players, with Maties Sport launching a drive to encourage #MatiesMVs (most valued fans) to support their teams when they play at home.



### BENEFIT FROM:

- The High Performance Sport Unit (<https://blogs.sun.ac.za/high-performance>). The focus falls mainly on three key areas: Sports medicine, performance enhancement and empowerment;
- Recreation and Active Lifestyle Unit (RALU). RALU promotes physical wellness for staff and students and creates an environment where non-conventional sport and activities are enjoyed and played;
- Centre for Human Performance Sciences;
- Maties Gymnasium.

### DOWNLOAD:

Get the Maties App and stay informed about events – especially sport events on campus.

### CONTACT DETAILS:

Tel: 021 808 4642

Email: [matiesport@sun.ac.za](mailto:matiesport@sun.ac.za)

Web: [www.sun.ac.za/sport](http://www.sun.ac.za/sport)

Facebook: [www.facebook.com/SUMatiesSport](http://www.facebook.com/SUMatiesSport)

Twitter: @MatiesSport

### Maties Sport presentation for ALL first-years

Day	Friday 26 January
Time	15:00 – 19:00
Venue	Coetzenburg sport fields

## CAMPUS HEALTH SERVICE

The Stellenbosch University Campus Health Service (CHS) offers an integrated and accessible health service for students and staff and has an equipped dispensary for this service. CHS supports the wellness initiative for students and staff and are provided at the Stellenbosch and Tygerberg campuses.

### QUICK QUESTIONS ABOUT CHS:

#### IS THIS SERVICE FREE?

Services delivered by our medical doctors and physiotherapists are charged at the minimum ethical tariff. All consultations delivered by our professional nurses are free of charge.

#### HOW ARE SERVICES PAID FOR?

We are a registered provider of all medical aids in South Africa and Namibia and all accounts are sent electronically. We accept cash, card and electronic payments as well. Medical aid rates apply.

#### DOES CHS COVER ALL MEDICAL SERVICES (E.G. X-RAYS AND DENTISTRY)?

We have professional medical doctors, physiotherapists and nurse practitioners. All other services are referred to.

#### MUST I BE IMMUNISED?

Being up to date with all vaccinations is an important consideration for all students (especially first years living in residences). The following vaccinations are all optional, but highly recommended:

- Influenza (flu) – annual vaccination
- Meningitis – one injection every 3 years
- Measles, Mumps and Rubella (German Measles) – if non-immune, series of 2 vaccines, 1 year apart
- Hepatitis A and B – compulsory in Health Sciences; combination (Twinrix) available, series of 3 vaccines over 6 months
- Human Papilloma Virus – series of 3 vaccines over 6 months
- All vaccines are available at CHS and prices are available upon request. Please check with your Medical Aid if they pay for vaccinations.

#### DOES CHS OFFER COUNSELLING?

We offer counselling to patients who come for specific screening/ test e.g. HIV testing and family planning. Other counselling is given by the Centre for Student Counselling and Development (CSCD). Their contact number is 021 808 4707.

#### IS PATIENT TRANSPORT AVAILABLE?

We offer transport to patients in the confines of the campus. The patient can contact Campus Health Services directly.

#### HOW DO I MAKE AN APPOINTMENT?

Appointments can be made by contacting us on the numbers below or at our practice.



### WHAT IF I HAVE AN EMERGENCY?

During office hours you can contact CHS. Alternatively for emergencies:

#### During office hours:

CHS emergency number, tel 076 431 0305

#### After hours or weekends:

ER24 emergency number, tel 010 205 3032

Stellenbosch Medi-Clinic, tel 021 886 9999 or 021 861 2000.

SU 24-Hour Crisis line, tel 082 557 0880

Contraception helpline, tel 0800 246 432

HIV Helpline, tel 0860 HIV 911

#### For more information go to:

Website: [www.sun.ac.za/kampusgesondheid](http://www.sun.ac.za/kampusgesondheid)

Facebook: [www.facebook.com/Stellenbosch.University.CHS](https://www.facebook.com/Stellenbosch.University.CHS)

Twitter: @CHS\_StellUni

**All our practices are open from Monday to Friday between 08:00 – 17:00.**

#### Physiotherapists

Tel: 021 808 3392

Next to the gymnasium in the Sport Science building (no 84 on the map)

#### Stellenbosch practice

Tel: 021 808 3496/3494

7 Claassen Street (no 16 on the map)

#### Tygerberg practice

Tel: 021 938 9590

3rd Floor, Tygerberg Student Centre (no 10 on the map)



# i

## CONSTRUCTION ON CAMPUS

## WELCOMING INFORMATION CHAMPIONS

Stellenbosch University is constantly busy improving facilities on campus for the benefit of students and staff. For this reason, please take note that during the academic year building will possibly be taking place in and around the accommodation facilities on campus.

There is a new housing project planned for execution during 2018 in the Monica, Harmonie and Wilgenhof precinct but alternative locations, i.e. Goldfields housing complex, are currently investigated. Furthermore, continuous maintenance and upgrade projects are also continuing as usual, for example the phased upgrading of bathrooms in Helshoogte that will start in the beginning of 2018. Smaller projects are also planned for Minerva and Nerina during 2018.

There are currently also plans to launch a project at Goldfields student housing complex during 2018, with the main objectives of improving the current dining-hall and kitchen as well as access to these facilities.

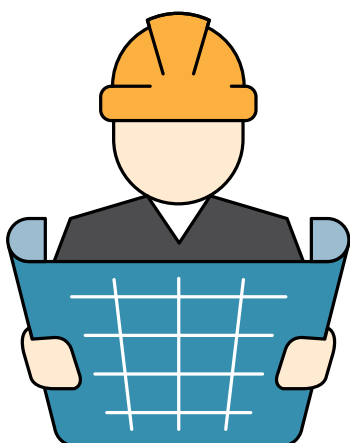
Because continuous construction work is happening on several terrains on all campuses and initially everyone is affected negatively in some way, no “discount” regarding residence tariffs will be considered. The question of ‘who will be given discount and who not?’ will result in a situation too tricky to handle. Students and their parents can be assured, however, that the well-being, safety and academic progress of students are always priority and that the University will do everything possible to limit inconvenience as much as possible.

During times of construction all possible arrangements will be made for the safety of students and their belongings. For bigger projects, regular meetings will be held and representatives of the residences will be invited in order to keep them updated on all matters and ensure that students are inconvenienced as little as possible.

No noisy work will be done during the first exam opportunities. In the week leading up to the start of the first exam opportunities, restrictions will be placed on working hours to ensure the residents are given sufficient opportunity to prepare for the upcoming examination.

All statutory requirements regarding occupational safety will be adhered to and the contract team and workers of each project will be clearly identifiable. The safety of our students is of cardinal importance.

Enquiries can be directed to Mr Anton Kriel at [ack@sun.ac.za](mailto:ack@sun.ac.za).



Twenty students in yellow T-shirts will be situated at different points around central campus during the welcoming week to assist new-comer students and parents who need information and directions to the venues they are supposed to go to. The info champions are well informed about events and the location of venues regarding the welcoming programme. This service aims to contribute to, and enhance, a positive and welcoming “Matie experience” for all first-years and their parents and guardians.

The Admin B building (Victoria Street opposite Wilgenhof) and the Admin A building (on the T junction of Ryneveld and Crozier streets) both have an enquiries desk for any other information.

**Email enquiries** info@sun.ac.za  
**Telephonic enquiries** 021 808 9111

## NATIONAL BENCHMARK TESTS (NBT)

It is **compulsory** for all prospective first-year students at SU, regardless of the matriculation year or examination system followed, to write the National Benchmark Tests.

For all NBT-related detail and reservations, please visit the official NBT website at [www.nbt.ac.za](http://www.nbt.ac.za).

If you have not yet written the NBT by the **last official test session on 6 January 2018**, you can send an email to [eloize@sun.ac.za](mailto:eloize@sun.ac.za) or tel **021 808 4704** to make an appointment to take the test on **Thursday 25 January 2018** in Stellenbosch. Bookings can be made until **18 January 2018**.

## EXTENDED DEGREE PROGRAMMES

Extended Degree Programmes offer selected students the opportunity to strengthen their study base with a view to ultimate success.

Faculties that offer Extended Degree Programmes are:

- AgriSciences
- Economic and Management Sciences
- Medicine and Health Sciences
- Engineering
- Arts and Social Sciences and
- Science

See contact details below for any questions regarding the Extended Degree Programmes.

All first-years participate in **early assessment**. To this end, they will complete a form of assessment in all first-year modules in the first six weeks of the academic year in order to form an early impression of their academic standing. Therefore, it is important that you give your studies your full attention from the outset, so that early assessment offers a true reflection of your progress.

**PLEASE NOTE:** Students who are following an Extended Degree Programme register in faculty context on either **Monday 29 or Tuesday 30 January**. (Please consult the notice on registration that will be sent to you separately by the University Registrar.)

General enquiries	Mnr Gert Young gyoung@sun.ac.za   021 808 4937
AgriSciences	Dr Natasja Brown nbro@sun.ac.za   021 808 2015
Economic and Management Sciences	Me Ilze Gelderblom ilzeg@sun.ac.za   021 808 9525
Medicine and Health Sciences	Dr Alwyn Louw ajnlouw@sun.ac.za   021 938 9389
Engineering	Mnr Minnaar Pienaar mop@sun.ac.za   021 808 4205
Arts and Social Sciences	Me Anita Jonker axjonker@sun.ac.za   021 808 2081
Sciences	Me Wilma Wagener ww@sun.ac.za   021 808 3063

## FACULTY PROGRAMMES





**i** **General enquiries** **SU Client Service Centre**  
**Tel** 021 808 9111  
**Venue** Admin A

**Academic enquiries** **Ms Nazli Daniels**  
**Tel** 021 808 4837  
**Venue** Admin A, Room 2036

**Welcoming programme** **Ms Ilze Gelderblom**  
**Tel** 021 808 9525  
**Venue** CGW Schumann, Room 702

All enquiries regarding the faculty's Welcoming Programme and academic offerings can be directed to staff at the above-mentioned venues. Please note the times when staff will be available at the venues

## THURSDAY 25 JANUARY

**14:30 – 16:00 PARENT MEETING WITH THE DEAN**

Parents of EMS students meet the Dean, staff and Student Committee (only parents, no students)

**Venue** Coetzenburg Centre, Coetzenburg

**PLEASE NOTE:** The Rectors welcoming follows at 18:00 next to the Coetzenburg Centre

## FRIDAY 26 JANUARY

**09:00 – 10:30 COMPULSORY INFORMATION SESSION FOR ALL FIRST-YEAR STUDENTS**

Students meet the roleplayers in the Faculty including the Dean, Vice deans, lecturers, Student Committee and support staff and receive important and valuable information regarding their studies.

**Venue** DRC (Kruiskerk), at the corner of Victoria- and Ryneveld Street

## MONDAY 29 JANUARY

**08:30 – 11:00 COMPULSORY LIBRARY VISIT**

EMS students visit the Stellenbosch University Library for an orientation (assemble 10 min prior to appointment at reception desk of library). Groups are divided as follows:

**08:30 – 09:00** Group 1 (surnames A – F)

**09:00 – 09:30** Group 2 (surnames G – L)

**10:00 – 10:30** Group 3 (surnames M – Q)

**10:30 – 11:00** Group 4 (surnames R – Z)

**08:30 – 11:00 E-MAZING RACE**

EMS students get to know the campus in a fun way and find out in which buildings they attend classes in. They also learn how their class schedule works, which departments there are in the Faculty, what type of support the University offers and much more.

### PRICES TO WIN!

**08:30 – 09:00** Group 1 (surnames R – Z)

**09:00 – 09:30** Group 2 (surnames M – Q)

**10:00 – 10:30** Group 3 (surnames G – L)

**10:30 – 11:00** Group 4 (surnames A – F)

**Venue** Stellenbosch University Library (stairs)

**14:00 – 16:00 ACADEMIC REGISTRATION**

All students that have not already registered online

**Venue** NARGA, Northern entrance, Admin A (see registration programme)

## TUESDAY 30 JANUARY

**08:00 – 16:00 COMPUTER REGISTRATION**

The session includes information concerning class schedules, how to use the SUNLEARN platform and Module Mentor registration

**08:00 – 10:00** Group 1 (surnames A – E)

**10:00 – 12:00** Group 2 (surnames F – J)

**14:00 – 16:00** Group 3 (surnames K – M)

**Venue** FHARGA, First Floor, Langenhoven Student Centre (Neelsie)

## WEDNESDAY 31 JANUARY

**08:00 – 12:00 COMPUTER REGISTRATION**

The session includes information concerning class schedules, how to use the SUNLEARN platform and Module Mentor registration

**08:00 – 10:00** Group 4 (surnames N – R)

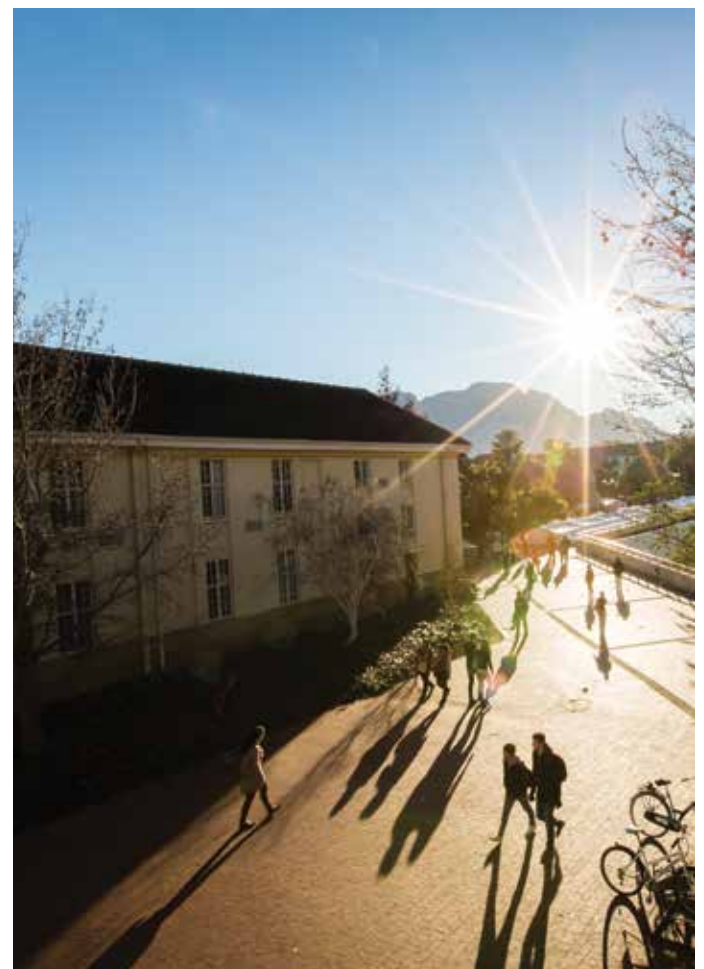
**10:00 – 12:00** Group 5 (surnames S – Z)

**Venue** FHARGA, First Floor, Langenhoven Student Centre (Neelsie)

**14:00 – 15:00 SU AND FACULTY BURSARY GENERAL INFORMATION SESSION**

**PLEASE NOTE:** This session is only for students who have already received a bursary offer from the University or Faculty of Economic and Management Sciences, e.g. a recruitment- or project zero bursary. No new applications.

**Venue** Van der Sterr 2121





# AGRISCIENCES

**Enquiries** Monika Basson, Tel 021 808 2978  
**Venue** Room 1033, JS Marais Building (Victoria Street)

All enquiries regarding the faculty's Welcoming Programme and academic offerings can be directed to staff at the above-mentioned venue. Please note the times when staff will be available at the venues.

## IMPORTANT GENERAL INFORMATION

### CONSERVATION ECOLOGY, FOOD SCIENCE, AND VITICULTURE AND OENOLOGY

Students who intend studying the programmes BSc Conservation Ecology, BSc Food Science, BScAgric Grape and Wine Sciences follow the Faculty of AgriSciences' welcoming programme.

### ELSENBURG (BAgric) STUDENTS

The programme Agricultural Production and Management (BAgric) is presented in collaboration with the Elsenburg Agricultural Training Institute. Students receive their training at Elsenburg, and will therefore also follow the Elsenburg welcoming programme.

#### Enquiries

Desiree Chinasamy-Dampies, tel 021 808 5457 or DesireeCD@elsenburg.com.

Visit the website for more information: [www.elsenburg.com](http://www.elsenburg.com)

#### Please note

- It is compulsory for all AgriScience students to follow the full programme.

## THURSDAY 25 JANUARY

**14:30 – 16:30** Parents meet the Dean & visit departments (only parents, no students)

**Venue** Room 1002, JS Marais, Victoria Street

**15:30 – 16:30** **COMPULSORY SESSION FOR THE FOLLOWING STUDENTS:**

- with NBT of 33% - 47% for the MAT-component; and/or
- with an average of between 55% and 59,9% for Mathematics [for programmes leading to BScAgric, BScFor (Forestry and Natural Resource Management), BScConsEcol, BSc Food Sc and BAgricAdmin]; or
- with an average of between 60% and 69,9% for Mathematics [for the programme BScAgric with Soil Science and Chemistry as major subjects or the programme BScFor (Wood and Wood Products Science)]; and/or
- with an average of between 45% and 49,9% for Physical Sciences (Physics and Chemistry) [for programmes leading to BScAgric, BScFor (Forestry and Natural Resource Management), BScConsEcol, BSc Food Sc and BAgricAdmin]; or
- with an average of between 55% and 59,9% for Physical Sciences (Physics and Chemistry) [for the programme BScFor (Wood and Wood Products Science)]; and/or
- who have gained conditional admission to the Extended Degree Programme.

**Venue** Room 1002, JS Marais, Victoria Street

## FRIDAY 26 JANUARY

**08:00 – 15:00** **COMPULSORY FACULTY PROGRAMME FOR ALL AGRISCIENCE STUDENTS**

- Welcoming by the Dean
- Assessment
- Academic guidance
- Academic and student support

- Lunch in the Faculty
- Departmental visits

**Venue** Room 1002, JS Marais, Victoria Street

## MONDAY 29 JANUARY

**08:30 – 10:30** **COMPULSORY MYSUN, SUNLEARN & LAB ONLINE ORIENTATION**

**Venue** Room 1002, JS Marais (English);  
Room 1011, Van der Sterr (Afrikaans)

**10:30 – 11:30** **Registration**  
**Venue** NARGA, Northern entrance, Admin A (see registration programme)

**11:30 – 12:30** **Only students admitted to the Extended Degree Programme (EDP)**  
**Venue** Room 1005, Mathematical Sciences and Industrial Psychology Building

**14:00 – 17:00** **Registration, orientation and placing regarding computer user area – compulsory for all students except Wood and Wood Products Sciences**

**14:00 – 15:30** Surnames A – L  
**15:30 – 17:00** Surnames M – Z  
**Venue** Room 3011, Third Floor, Natural Sciences Building (NARGA H)

Please make sure that you bring your student card and the letter you received from SU with your username and password to the registration.

**14:00 – 17:00** Computer Orientation: Only Wood and Wood Products Sciences – Afrikaans (join Engineering students)

**Venue** S207A & S207B, Engineering Building, Banghoek Ave

Please make sure that you bring your student card and the letter you received from SU with your username and password to the registration.

## TUESDAY 30 JANUARY

**08:00 – 11:00** **COMPULSORY SESSION:** Academic guidance, timetable & lecture organisation Examinations Non Academic & student support

**Venue** Room 1002, JS Marais (Engels)  
Room 1011, Van der Sterr (Afrikaans)

**11:15 – 12:30** **Amazing Race**  
**Venue** Meet at the main entrance, JS Marais

**14:00 – 15:00** Library visit (surnames A – L)  
**Venue** Stellenbosch University Library

**14:00 – 15:00** Compulsory workshop (surnames M – Z)  
**Venue** Russell Botman House

**15:00 – 16:00** Library visit (surnames M – Z)  
**Venue** Stellenbosch University Library

**15:00 – 16:00** Compulsory Workshop (surnames A – L)  
**Venue** Russell Botman House



## WEDNESDAY 31 JANUARY

**08:00 – 12:00** Technical visit to various environments on **Welgevallen Experimental Farm. All students except Forestry and Wood Sciences.**  
**Venue** Paul van der Bijl-laboratoria, Welgevallen Experimental Farm

### Various fields:

- Agronomy, Plantbreeding and Genetics
- Aquaculture
- Horticulture, Soil Science and Plant Pathology
- Animal Science
- Viticulture and Oenology
- Conservation Ecology

**Important** Comfortable clothes and walking (closed) shoes; something warm to wear

**09:00 – 10:00** Computer Orientation: Wood and Wood Products Sciences – English (join Engineering students)  
**Venue** S207A & S207B, Engineering Building, Banghoek Ave

**10:30 – 12:30** Departmental visit – Only Forestry and Wood Science students

Introduction to first semester modules and visit to Jonkershoek  
 Students must wear suitable, closed shoes

**Venue** Meet at the main entrance, Paul Sauer



**1** **Contact person** August Engelbrecht  
**Tel** 021 808 3947  
**Venue** Room A213, General Engineering Building, Banghoek Road  
**Hours** 08:00 – 15:30

All enquiries regarding the Faculty's Welcoming Programme and academic offerings can be directed to staff at the above-mentioned venue. Please note the times when staff will be available.

## THURSDAY 25 JANUARY

**15:00 – 16:00** Parents of first-year students (English) meet the Vice-Dean, Prof Anton Basson  
**Venue** Reitz Hall, General Engineering Building

## FRIDAY 26 JANUARY

No formal faculty programme for the day.

## MONDAY 29 JANUARY

Programme for English speaking students will be in the Reitz Hall, unless stated otherwise.

**08:00 – 08:15** **Prof Wikus van Niekerk, Dean of Engineering, welcomes the students**  
**Venue** Area in front of the General Engineering Building

**08:30 – 09:30** **Registration of all new first-year students** who did not yet register online, including first-year EDP students  
**Venue** NARGA, North entrance of Admin A

**10:15 – 11:15** Prof Wikus van Niekerk introduces Vice-Deans and Chairpersons of departments (each Chairperson speaks about their degree programme)

**11:15 – 11:45** **Cool-drink break**  
**Venue** Area in front of the General Engineering Building

**11:45 – 12:15** August Engelbrecht introduces the Engineering Students' Council (ESC)

**12:15 – 13:00** **General orientation of Faculty and University**  
 English speaking students have afternoon off.

## TUESDAY 30 JANUARY

**09:00 – 09:45** August Engelbrecht discusses information regarding class-, test- and exam timetables and other important administration

**09:45 – 10:15** Break

**10:15 – 11:00** Culture of learning – survival as an Engineering student

**11:00 – 12:30** Students meet lecturers for subject orientation

## WEDNESDAY 31 JANUARY

**09:00 – 12:00** Computer Orientation (do textbook orders on computer system) (only English-speaking students)  
**Venue** S207A and S207B (Electronic classrooms – Civil Eng)

**12:00 – 12:45** All first-year EDP students meet Ms W Wagener and Prof AH Basson  
**Venue** Reitz Hall

All other first-year students have the time off

**14:00 – 17:00** All first-years receive their textbooks  
**Venue** Foyer, General Engineering Building



**Contact persons** Taryn Bernard & Shona Lombard  
**Tel** 021 808 2146 / 021 808 2513  
**Hours** 09:00 – 16:00  
**Venue** Arts Building, Room 461 / Room 457

All enquiries regarding the Faculty's Welcoming Programme and academic offerings can be directed to staff at the above-mentioned venues. Please note the times when staff will be available.

## THURSDAY 25 JANUARY

**14:00 – 15:00** Parents of BA (Sport Science) students meet programme co-ordinator

**Venue** Sport Science Building, Hall A (no 84 on the map)

**15:30 – 16:30** Parents (all programmes within Faculty) meet Dean, Prof Anthony Leysens

**Venue** Endler, Conservatorium, Victoria Street (no 79 on the map)

## FRIDAY 26 JANUARY

**09:30 – 12:00** All Arts and Social Sciences' students with a NSC average of between 60% and 64,9% meet lecturers about the extended degree programme (EDP)

**Venue** Room 230, Arts Building (Ryneveld Street)

**Take note:** All non-music students who want to take Practical Music Study E as an extra subject or elective must fill in their names for an audition at the Music Department (use the Neethling Street entrance). Auditions will take place from 31 January – 2 February.

**Enquiries:** Me Minette du Toit-Pearce, pearce@sun.ac.za.

## MONDAY 29 JANUARY

**09:00 – 10:45** Students meet **DEAN and BASC**

**Venue** Endler, Conservatorium, Victoria Street (no 79 on map)

### PROGRAMMES:

- BA in Humanities
- BA in International Studies
- BA in Drama and Theatre Studies
- B of Occupational Therapy
- B of Speech-Language and Hearing Therapy
- BA in Visual Arts
- BA in Sport Science

**09:00 – 10:45** Students meet **PROGRAMME COORDINATORS**

### VENUE PROGRAMME

RW Wilcocks, 3001 BA in Social Dynamics

RW Wilcocks, 1001 BA in Language and Culture

RW Wilcocks, 1012 B of Social Work

Arts, 228 BA in Human Resource Management

Arts, 227 BA in Political, Philosophical and Economic Studies

Arts, 226 BA in Socio-Informatics

Arts, 224 BA in Development and Environment Conservatorium,

Jannasch Hall BMus; BA in Music; Higher Certificate in Music; Diploma in Practical Music

**11:00 – 12:45** Students meet **DEAN and BASC**

**Venue** Endler, Conservatorium, Victoria Street (no 79 on map)

### PROGRAMMES:

- BA in Social Dynamics
- BA in Language and Culture
- B of Social Work
- BA in Human Resource Management

- BA in Political, Philosophical and Economic Studies
- BA in Socio-Informatics
- BA in Development and Environment
- BMus; BA in Music; Higher Certificate in Music; Diploma in Practical Music

**11:00 – 12:45** Students meet **PROGRAMME COORDINATORS**

### VENUE

Arts, 230

Arts, 229

Arts, 225

Arts, 223

Arts, 222

Visual Arts, 1024

Sport Science

Building, Foyer

### PROGRAMME

BA in Humanities

BA in International Studies

BA in Drama and Theatre Studies

B of Occupational Therapy

B of Speech-Language and Hearing Therapy

BA in Visual Arts

BA in Sport Science

**14:00 – 17:00**

### Venue

### COMPULSORY LIBRARY ORIENTATION

Stellenbosch University Library

**14:00**

BA in Language and Culture

BA in Sport Science

**14:30**

BA in International Studies

BA in Drama and Theatre Studies

**15:00**

BA in Social Dynamics

B of Social Work

**15:30**

BA in Visual Arts

BA in Development and Environment

BA in Political, Philosophical and Economic Studies

**16:00**

BMus

BA in Music

BA in Socio-Informatics

BA in Human Resource Management

B of Speech-Language and Hearing Therapy

B of Occupational Therapy

BA in Humanities

**16:30**

## TUESDAY 30 JANUARY

**08:00 – 11:30** REGISTRATION

**Venue** NARGA, Northern entrance to Admin A

**COMPULSORY INTRODUCTION** to HUMARGA (computer users' area) and registration for network

**11:00 – 13:00** BA in Humanities

**14:00 – 16:00** BA in Language and Culture

BA in Social Dynamics

BA in Development and Environment

BA in Socio-Informatics

## WEDNESDAY 31 JANUARY

**COMPULSORY INTRODUCTION** to HUMARGA (computer users' area) and registration for network

**08:00 – 10:00** BA in International Studies

BA in Sport Science

BA in Visual Arts

BA in Human Resource Management

**10:00 – 12:00**

BA in Drama and Theatre Studies

B of Social Work

BA in Political, Philosophical and Economic Studies

BA in Music

BMus

Diploma in Practical Music

Higher Certificate in Music





<b>1</b>	<b>General enquiries</b>	Ms Karin Wiss
	<b>Tel</b>	021 808 3780
	<b>Venue</b>	Room 2007, Old Main Building
	<b>Academic enquiries</b>	Mr Shirle Cornelissen (Faculty Administrator)
	<b>Tel</b>	021 808 9111
	<b>Venue</b>	Admin A
	<b>Financial enquiries</b>	Student Fees Division (class fees)
	<b>Tel</b>	021 808 3530
	<b>Venue</b>	Admin A

All enquiries regarding the faculty's Welcoming Programme and academic offerings can be directed to staff at the above-mentioned venues. Please note the times when staff will be available at the venues.

## TUESDAY 23 JANUARY

LLB, BCom (Law), BA (Law) and BAccLLB

<b>14:00 – 18:00</b>	Students arrive to book into their residences
<b>Venue</b>	Various residences
<b>18:00 – 19:00</b>	Parents and first-year Law students meet the Dean (Prof Nicola Smit)
<b>Venue</b>	Kruiskerk (Cnr of Victoria & Ryneveld Str)
<b>19:00 – 20:00</b>	Opportunity for informal discussions with staff members
<b>Venue</b>	Old Main Building (Law Faculty)

## WEDNESDAY 24 JANUARY

LLB, BCom (Law), BA (Law) and BAccLLB

### 08:30 – 16:00 COMPULSORY FACULTY PROGRAMME

- Assessment
- Academic guidance
- Law Programme preparation

### Lunch with the Faculty

**Venue** Room 1023, Old Main Building

## THURSDAY 25 JANUARY

LLB, BCom (Law), BA (Law) and BAccLLB

### 08:30 – 12:00 COMPULSORY FACULTY PROGRAMME

- Assessment
- Academic Guidance
- Law Programme Preparation

**Venue** Room 1023, Old Main Building

## FRIDAY 26 JANUARY

LLB, BCom (Law), BA (Law) and BAccLLB

### 08:30 – 12:00 COMPULSORY FACULTY PROGRAMME

- Assessment
- Academic guidance
- Programme specific information

**Venue** Room 1023, Old Main Building

## ACADEMIC AND COMPUTER REGISTRATION

All students complete TWO registration processes: academic registration and registration at the Faculty's computer user area. Students who have already registered academically via the internet will have completed the first registration process. If not, please report to ADMIN A at the times set out below. Students may only register at the computer user area once they have completed their academic registration. For computer registration, all students must report to HUMARGA (LLB & BA (Law)) or FHARGA (BCom (Law) & BAccLLB) at the times set out below. A late registration fee will be levied on students who fail to register in the prescribed time slot.

**PLEASE NOTE:** BCom (Law) and BAccLLB students attend the general welcoming programme of the Faculty of Law, which includes academic registration. However, these students use the computer user area of the Faculty of Economic and Management Science only, and accordingly register at FHARGA on Tuesday 30 January.

## MONDAY 29 JANUARY

**09:00 – 10:30** Registration - LLB, BCom (Law), BA (Law) and BAccLLB  
**Venue** NARGA, Northern entrance to Admin A

**14:00 – 16:00** Registration and computer orientation - LLB and BA (Law)  
**Venue** HUMARGA, Arts and Social Sciences Building

## TUESDAY 30 JANUARY

**08:00 – 10:00** Registration and computer orientation - BCom (Law) and BAccLLB (surnames A – L)  
**Venue** FHARGA, Accounting and Statistics Building

**10:00 – 12:00** Registration and computer orientation - BCom (Law) and BAccLLB (surnames M – Z)  
**Venue** FHARGA, Accounting and Statistics Building

**14:00 – 15:00** Library visit - LLB and BAccLLB  
**Venue** Stellenbosch University Library, Entrance hall

**15:00 – 16:00** Library visit - BA (Law) and BCom (Law)  
**Venue** Stellenbosch University Library, Entrance hall

## WEDNESDAY 31 JANUARY

**COMPULSORY** for all LLB, BCom (Law), BA (Law) and BAccLLB

### 08:00 – 12:30 COMPULSORY FACULTY PROGRAMME

- Introduction to first-year modules
- Feedback on assessment
- Student Societies
- Closing

**Venue** Room 1023, Old Main Building

# MEDICINE AND HEALTH SCIENCES

Please note that students in the **B of Occupational Therapy and B of Speech-Language and Hearing Therapy**, together with their parents, follow the programme at the **Tygerberg campus on 25 January from 08:30 – 11:00** and thereafter these students follow the programme of the Faculty of Arts and Social Sciences on the Stellenbosch campus. Transport from Stellenbosch and back is available to these students and parents. (For more details on registration, please refer to the letter that will be sent to you separately.)

All new students and their parents (MB, ChB, B of Occupational Therapy, B of Speech-Language and Hearing Therapy, BSc in Dietetics and BSc in Physiotherapy) are cordially invited to participate in the following activities (for parents, only Thursday 25 January).

**Busses** will be provided for these OT and SLHT first-years and their parents from Stellenbosch to Tygerberg at the following times:

- **07:00** - Depart Stellenbosch campus, departure point to be confirmed with students directly
- **08:15** - Arrive at Tygerberg campus. Parents and first-year students report to the Tygerberg campus Sports Hall.

Please note that the **welcoming ceremony at 18:00** (informal programme for students starts at 17:30) on **Thursday 25 January** takes place at the **Danie Craven Stadium in Stellenbosch**, and not on Tygerberg campus. New Tygerberg campus students and their parents are requested to attend this programme after the day's programme at Tygerberg campus. For those who do not have their own transport, busses will be arranged from Tygerberg campus to Stellenbosch, and back.

**ENQUIRIES** Farah Fredericks, tel 021 938 9379  
Sandra Josias, tel 021 938 9789  
Khairounisa Foflonker, tel 021 938 9461

## THURSDAY 25 JANUARY

**08:30 – 10:00** Welcoming of parents and first-year students by the Dean: Faculty of Medicine and Health Sciences, the Tygerberg Student Council chairperson and other role players in the Faculty  
**Venue** Tygerberg Sports Hall (no 10 on the map)

**10:00 – 11:00** Meeting of parents and new students with programme coordinators for MB, ChB, B of Occupational Therapy, B of Speech-Language and Hearing Therapy, BSc in Dietetics and BSc in Physiotherapy respectively  
**Venue** Education Building (no 2 on the map)  
MB, ChB: Lecture Hall 11  
Physiotherapy: Lecture Hall 4  
Dietetics: Lecture Hall 1  
Speech-Language & Hearing Therapy: (TBC)  
Occupational Therapy: Room 1034

Please visit the student societies' exhibition in the Tygerberg Student Centre between 11:00 and 14:00 if you are not involved in any of the sessions below.

Please also visit the cafeteria in the Tygerberg Student Centre or the coffee shop in the Clinical Building for refreshments or a light meal. There is also a kiosk in the Education Building.

**11:15** Busses depart from Tygerberg to Stellenbosch: Occupational Therapy & Speech Language & Hearing Therapy first-year students & parents will return to Stellenbosch Campus for the Welcoming Programme.

**11:00 – 12:30** Explore Tygerberg – a campus tour for first-year students of Hippokrates and Meerhoff, and their parents  
**Venue** Assemble on the Hippokrates lawn (no 4 on the map)

**11:00 – 12:30** Osler\* students and their parents meet Osler committee members  
**Venue** Lecture Hall 11, Education Building

**12:30 – 14:00** Explore Tygerberg – a campus tour for first-year students of Huis Francie van Zijl and Huis Kerkenberg, and their parents  
**Venue** Assemble on the Hippokrates lawn

**12:30 – 14:00** Session on student support at Tygerberg campus for parents of first-year students in Hippokrates and Osler  
**Venue** Lecture Hall 11, Education Building

**14:00 – 15:30** Explore Tygerberg – a campus tour for first-year students of Osler, and their parents  
**Venue** Assemble on the Hippokrates lawn

**14:00 – 15:30** Session on student support at Tygerberg campus for parents of first-year students in Huis Francie van Zijl, Meerhoff and Huis Kerkenberg  
**Venue** Lecture Hall 11, Education Building

**15:30** Busses depart for Danie Craven Stadium, Stellenbosch

**17:30 – 18:00** Informal programme

**18:00 – 19:00** **OFFICIAL WELCOMING**  
Rector's welcoming of new students and their parents (compulsory for all students)  
**Venue** Danie Craven stadium (no 33 on the Stellenbosch campus map)

If you are using your own transport, please take the traffic congestion in Stellenbosch into account when planning travelling time, as well as parking and walking distance to the stadium. Comfortable clothes and shoes are recommended.

\*Osler refers to the Private Students' Organisation (PSO) on Tygerberg campus, i.e. students who do not live in residences.



## FRIDAY 26 JANUARY

**Please note** A Muslim prayer facility is available on Tygerberg campus

**09:00 – 11:30** Registration (only those first-year students who could not self-register via <http://www.maties.com>) and taking of photographs for student cards (all first-years)

**09:00 – 09:30** Huis Francie van Zijl

**09:30 – 10:00** Huis Kerkenberg and Meerhoff

**10:00 – 10:30** Hippokrates

**10:30 – 11:30** Osler

**Venue** As indicated in registration information booklet

**12:00 – 16:00** GERGA-orientation (compulsory: all first-years)

**12:00 – 12:45** Hippokrates

**13:00 – 13:45** Huis Francie van Zijl

**14:00 – 14:45** Huis Kerkenberg and Meerhoff

**15:00 – 15:45** Osler

**Venue** GERGA, 3rd floor, Education Building

**Please note:** It is highly recommended that all students on Tygerberg campus provide their own electronic devices (e.g. laptops or tablets) for academic purposes, including assessments. For more information on the Bring-Your-Own-Device (BYOD) system please visit [www.sun.ac.za/byod](http://www.sun.ac.za/byod).

**14:00 – 16:00** Registration of new first-year students for the B of Occupational Therapy and Speech-Language and Hearing Therapy programmes who cannot self-register

**Venue** Room 3008 (office of Ms Z Jansen), Admin A (no 1 on the Stellenbosch campus map), Stellenbosch

## SATURDAY 27 JANUARY

General and social integration as arranged by residences and Osler PSO.

## MONDAY 29 JANUARY

**08:00 – 16:00** **Academic orientation: An introduction to your degree**

Introduction (Prof Julia Blitz, Deputy Dean: Learning and Teaching and Ms Ilana van Niekerk, Chairperson: Tygerberg Academic Affairs Council). Different programmes and activities are presented within group context.

**Venue** Lecture Hall 11, Education Building

Some of the activities include visits to patients in the hospital; students are, therefore, required to be dressed in a professional manner\*.

## TUESDAY 30 JANUARY

General and social interaction as arranged by residences and Osler PSO.

## WEDNESDAY 31 JANUARY

**09:00 – 12:00** What first-years should know – an interactive learning experience

**Venue** Tygerberg Sports Hall

**09:00 – 16:00** Compulsory session for B of Occupational Therapy students at the Tygerberg campus  
**Venue** Room 1018, Division of Occupational Therapy, Education Building

**12:30 – 14:00** Tutor-mentor introduction and lunch  
**Venue** Lecture Hall 11, Education Building

### 14:00 – 15:30 Academic Administration

- Submission of admission documents (2 copies of Matriculation results, 2 copies of appropriate identification documentation\*\* and clinical visitation forms (only Dietetics and Physiotherapy students))
- Completion of HPCSA registration forms
- Distribution of timetable booklets and study guides
- Opportunity for questions regarding administrative issues

**Venue** MB, ChB: Lecture Hall 11  
Physiotherapy and Dietetics: Lecture Hall 4, Education Building

\*Men Neat trousers with collared shirt, no slip-slops, no excessive jewellery.

\*Women Neat and appropriate attire, no slip-slops, no excessive jewellery.

\*\*SA citizens ID or birth certificate (no passports or driver's licences) – two copies.

\*\*International students Passport and study permit – two copies.





**i** **Contact persons** Mrs W Wagener | Mrs M van den Worm  
**Tel** 021 808 3063 | 021 808 3760  
**Hours** As indicated in programme below  
**Venue** Room 2012 and 2013, Al Perold Building (no 65 on the map)

All enquiries regarding the Faculty's Welcoming Programme and academic offering may be directed to staff at the abovementioned venues. Please note the times when staff will be available.

**PLEASE NOTE:**  
**ATTENDANCE IS COMPULSORY FOR ALL NEW STUDENTS**

## THURSDAY 25 JANUARY

**Parents meet the Dean (only parents, not for students)**

**14:00 – 14:30** Help with questions regarding modules and programmes (for parents) if needed

**Venue** Foyer, Mathematical Sciences & Industrial Psychology Building (no 67 on the map)

**14:30 – 16:00** Welcome by the Dean, Prof Louise Warnich and Vice-dean, Prof Ingrid Rewitzky

**Venue** Room 3001 (Afrikaans) OR Room 1005 (English), Mathematical Sciences & Industrial Psychology Building

## FRIDAY 26 JANUARY

**08:30 – 09:50 WELCOMING**

- Meeting with the Dean, Prof Louise Warnich and Vice-dean, Prof Ingrid Rewitzky

- Orientation regarding programme offering of the Faculty

**Venue** Room 3001 (Afrikaans) OR Room 1005 (English), Mathematical Sciences & Industrial Psychology Building

**10:00 – 12:30** Your journey through Science@SU (Bring stationary: pen, kokis, highlighters)

**Programme** **Human Life Sciences (Biology) and (Biology with Psychology)**

**Venue** Room 1005, Mathematical Sciences & Industrial Psychology Building

**Programme** **Molecular Biology and Biotechnology**

**Venue** Room 2011, First-Year Chemistry Building (no 56 on the map)

**Programme** **Biodiversity and Ecology**

**Venue** Broom Lecture hall 2020, Natural Sciences Building (no 69 on the map)

**Programme** **Sport Science**

Organisation of the Sport Science practical programme and timetable and the ordering of Sport Science uniforms

**Venue** Room 1015, First-Year Chemistry building (no 56 on the map)

**Programme** **Physics**  
**Venue** Room Beta 3002, Merensky Building (no 66 on the map)

**Programme** **Mathematical Sciences**  
**Venue** Room 3001, Mathematical Sciences & Industrial Psychology building

**Programme** **Chemistry**  
**Venue** Room 2003, De Beers Building (no 54 on the map)

**Programmes** **Earth Science and Geo-informatics**  
**Venue** Room 1004, Chamber of Mines Building (no 70 on the map)

## MONDAY 29 JANUARY

**Your support structures, timetable and lecture organisation**

**08:00 – 09:30** English speaking students

**09:45 – 11:15** Afrikaans speaking students

**Venue** Room 1005, Mathematical Sciences & Industrial Psychology Building

**11:30 – 12:30** Only students admitted for Extended Degree Programmes in Science

**Venue** Room 1005, Mathematical Sciences & Industrial Psychology Building

**11:00 – 13:00** Help with further questions regarding modules and programmes if needed

**Venue** Rooms 2012 and 2013, Al Perold Building

**13:30 – 15:00** Registration

**Venue** NARGA, Northern entrance, Admin A (see registration programme)

## TUESDAY 30 JANUARY

**Computer user area registration, orientation and placing; SUNLearn orientation and Library orientation**

**Surnames A – E**

**08:00 – 09:40** Room 3011 Natural Science Building, Third floor (NARGA H)

**10:00 – 11:00** Library visit, Foyer, Stellenbosch University Library

**Surnames F – K**

**08:00 – 09:00** Library visit, Foyer, Stellenbosch University Library

**09:40 – 11:20** Room 3011 Natural Science Building, Third floor (NARGA H)

**Surnames L – Q**

**09:00 – 10:00** Library visit, Foyer, Stellenbosch University Library

**11:20 – 13:00** Room 3011 Natural Science Building, Third floor (NARGA H)



### Surnames R – Z

**11:00 – 12:00** Library visit, Foyer, Stellenbosch University Library

**14:00 – 15:40** Room 3011 Natural Science Building, Third floor (NARGA H)

## WEDNESDAY 31 JANUARY

### Science academic orientation

#### Surnames A – K

**09:00 – 10:00** Amazing race

**Venue** Outside (main entrance) of Mathematical Sciences & Industrial Psychology Building

**10:30 – 11:30** Tools for your journey

**Venue** Room 1005, Mathematical Sciences & Industrial Psychology Building

### Surnames L – Z

**09:00 – 10:00** Tools for your journey

**Venue** Room 1005, Mathematical Sciences & Industrial Psychology Building

**10:30 – 11:30** Amazing race

**Venue** Outside (main entrance) of Mathematical Sciences & Industrial Psychology Building

## THURSDAY 1 FEBRUARY

**08:00 – 16:00** Help with further questions regarding modules and programmes if needed

**Venue** Rooms 2012 and 2013, Al Perold Building

## EDUCATION



**Contact person** Dr Bernard Rhodes  
**Tel** 021 808 2273 / 021 808 2300  
**Hours** 08:00 – 16:30  
**Venue** Room 4007, GG Cillié Building

All enquiries regarding the faculty's Welcoming Programme and academic offerings can be directed to staff at the above-mentioned venue. Please note the times when staff will be available at the venues.

## THURSDAY 25 JANUARY

### Parents' introduction to the faculty

**15:00 – 15:30** Cool drinks / water

**Venue** Foyer, GG Cillié Building (no 76 on the map)

**15:30 – 16:30** Meet the acting Dean, Prof Y Waghid

**Venue** Room 3001, GG Cillié Building

**16:30 – 17:00** Parents meet Lecturers. Enquiries regarding registration, programme and modules

**Venue** Room 3001, GG Cillié Building

## FRIDAY 26 JANUARY

### 09:00 – 10:00 Welcoming of new students

- Meet the acting Dean, Prof Y Waghid
- Orientation regarding Faculty of Education and BEd programme
- Academic support to newcomer students
- Education bursary and time table
- Meet the Education Student Committee
- General information regarding registration

**Venue** Room 1028, GG Cillié Building (no 76 on the map)

**10:00** Cool drinks / water

**10:00 – 11:30** Enquiries regarding registration, programme and modules

**Venue** Room 1028, GG Cillié Building

## MONDAY 29 JANUARY

**08:00** Academic Registration BEd (General Education)

**Venue** NARGA, Northern Entrance of Admin A, Ryneveld Str

**10:20** Students gather in front of GG Cillié Building (moves as group to HUMARGA)

**10:30 – 12:30** Computer registration and orientation (bring student card to registration)

- Introduction to HUMARGA computer users' area
- Introduction to WebCT
- Registration for network use
- Completion of Alpha Base Questionnaire

**Venue** HUMARGA, Third floor, Arts Building

**12:30 – 16:30** Faculty orientation

**Venue:** Room 1028, GG Cillié Building

## TUESDAY 30 JANUARY

**10:00 – 12:20** Visit Stellenbosch University Library (compulsory introduction and orientation). Groups must gather 5 minutes before the time in front of the library.

**10:00 – 10:30** Session 1 – Surnames A – E

**10:40 – 11:10** Session 2 – Surnames F – K

**11:15 – 11:45** Session 3 – Surnames L – R

**11.50 – 12.20** Session 4 – Surnames S – Z

**14:00 – 16:30** Information session regarding BEd Programme

- Overview of BEd programme and handout of "Guidelines for BEd Programme"
- Arrangements regarding subjects: Afrikaans, English Studies and Information Skills
- Programme requirements
- Visit to the Education Library (media centre)

**Venue** Room 1028, GG Cillié Building



**i** **Contact person** Ms Marieke Brand  
**Tel** 021 808 2142  
**Email** mariekeb@sun.ac.za  
**Venue** Room 1024 (Reception), Room 2031 (Attie van Wijk Auditorium), Faculty of Theology, 171 Dorp Street, Stellenbosch  
**Hours** 08:30 – 16:30

All enquiries regarding the faculty's Welcoming Programme and academic offerings can be directed to staff at the above-mentioned venue. Please note the times when staff will be available at the venues.

## THURSDAY 25 JANUARY

**15:30 – 16:30** **Parents of new students meet the Dean & TSC**

**Venue** Attie van Wijk Auditorium

## FRIDAY 26 JANUARY

**09:00 – 12:00** **General orientation to the faculty**

**Venue** Attie van Wijk Auditorium

## MONDAY 29 JANUARY

**08:00 – 09:00** Faculty timetable and registration information session

**Venue** Attie van Wijk Auditorium

**09:30 – 10:00** Library visit (Stellenbosch University Library)

**Venue** Foyer, Stellenbosch University Library

**10:30 – 11:30** **REGISTRATION**

**Venue** Admin A

**14:00 – 16:00** Introduction to Computer User Area

**Venue** HUMARGA

## TUESDAY 30 JANUARY

**08:30 – 09:00** **Introduction:**

- Centre for Teaching and Learning
- Language Centre

**Venue** Attie van Wijk Auditorium

**09:00 – 10:30** **Introduction of lecturers**

- Old and New Testament
- Hebrew, Greek
- Systematic Theology and Ecclesiology
- Practical Theology and Missiology
- Philosophy, Sociology, Psychology

**Venue** Attie van Wijk Auditorium

**10:30 – 11:00** Tea and refreshments: lecturers, TSC and first-years

**Venue** Cafeteria and tent area, Faculty of Theology

**11:00 – 11:30** Library visit

**Venue** Theology Library, Faculty of Theology

**11:30 – 12:30** Introduction to SUN Learn and SU internet use

**Venue** Computer lab, Faculty of Theology

**14:30 – 16:00** Faculty spiritual formation programme

**Venue** Sol Iustitiae Chapel

## WEDNESDAY 31 JANUARY

**10:00 – 10:30** Centre for Student Counselling and Development (CSCD)

**Venue** Attie van Wijk Auditorium

**10:30 – 12:30** **INFORMATION SESSION** on centres and partners of the faculty:

- Beyers Naudé Centre and archive
- Ekklesia
- EGON
- NetACT
- Communitas
- DRC archive

**Venue** Attie van Wijk Auditorium

**12:30 – 14:00** Joint lunch: first-years, TSC, staff

**14:00 – 15:00** Meet the church representatives

**Venue** Sol Iustitiae Chapel





# PLAY YOUR PART

Here is a list of things you can do to help save water. For more tips, visit [www.sun.ac.za/sustainability](http://www.sun.ac.za/sustainability).

## Here are some of the water-saving measures already implemented at SU:

- No irrigation takes place on campuses as part of the implementation of level 4B water restrictions.
- Water-saving shower heads and toilets have been installed on campuses.
- Water-permeable paving and grass squares are used, where possible, so that rain water can penetrate the soil and refill the underground aquifers.
- Landscape areas are designed to retain water, which enables the absorption and storage of water.
- Indigenous and endemic plant species that require less water than exotic species are systematically planted.
- Grey water is reused.
- Rain water is collected and used.
- Water leakages are continuously checked and repaired.

- Report leaky taps, sprinklers and other devices on campus to (021) 808-4666.
- Drink tap water. Three to five litres of water is used to produce one litre of bottled water.
- Watch out for the water stations with their special branding on the campuses.
- Taking a shower uses less water than taking a bath. (Level 4B water restrictions encourage a two-minute shower.)
- Turn off the tap while rubbing your hands with soap, brushing your teeth or shaving.
- Ensure that all taps are tightly closed. A dripping tap wastes up to 30 litres of water a day, which is equal to 10 000 litres per year.
- While waiting for tap water to get warm, don't let the cold water run down the drain.
- Use eco-friendly soap so that water can be reused.
- Wash less small loads of laundry in the washing machine. Wait until you have a large load before doing the laundry.



## CONTACT US

Contact John de Wet ([jdewet@sun.ac.za](mailto:jdewet@sun.ac.za)) or Meg Hamilton ([meg2@sun.ac.za](mailto:meg2@sun.ac.za)) for further information or send an e-mail to [groen\\_green@sun.ac.za](mailto:groen_green@sun.ac.za). [www.sun.ac.za/sustainability](http://www.sun.ac.za/sustainability)



## WATER IS SCARCE – HELP US SAVE!



The Western Cape is currently experiencing a drought crisis and it is expected that each one of us should contribute to saving water. Level 4B water restrictions are currently in place, which means that each person in the Western Cape is limited to the use of 87 liters of water per day. And this is also applicable to Stellenbosch University.

ed that each one of us should contribute to saving water. Level 4B water restrictions are currently in place, which means that each person in the Western Cape is limited to the use of 87 liters of water per day. And this is also applicable to Stellenbosch University.

**SU has already started implementing water saving measures a while ago.**

**The following objectives were identified:**



A **10%** reduction in water consumption, measured against 2012 values.



A **30%** reduction in water used for irrigation, measured against 2012 values. (No irrigation takes place during the current level 4B water restrictions.)



A reduction in water from the environment flowing to rivers (storm water).



An increase in the quality of effluent water.



# MAIN CAMPUS MAP



## SUPPORT SERVICES

- 1** Administration, Block A
- 2** Administration, Block B
- 3** Administration, Block C
- 4** SU Library
- 5** Neelsie Student Centre; SRC Office
- 6** Campus Security
- 7** Centre for Student Recruitment
- 8** Centre for Student Counselling and Development: Reception (CSCD)
- 9** CSCD: Office for Students with Special Learning Needs (Disabilities); Den Bosch; Equality Unit
- 10** CSCD: Unit for Psychotherapeutic and Support Services
- 11** Centre for Teaching and Learning
- 12** Division for Student Affairs
- 13** Centre for Student Communities
- 14** Centre for Student Leadership and Structures
- 15** Language Centre: Reading Lab and Language Enrichment Courses
- 16** Campus Health Services
- 17** Maties Sport; Die Stal
- 18** Coetzenburg Centre
- 19** Old Conservatoire
- 20** SU Art Gallery
- 21** SU Museum
- 22** Centre for Learning Technologies: Telematic Services
- 23** IT Hub (Help Centre) and TAS-IT
- 24** Legal Aid Clinic
- 25** Social Impact, Lückhoff School
- 26** Transport Services
- 27** Language Centre: Writing Lab
- 28** Facility Services
- 29** Information Governance
- 30** Purchasing and Provision Services
- 31** Facilities Management; LaunchLab
- 32** Information Technology; LaunchLab
- 71** Stellenbosch University International
- 71** Postgraduates Office

## SPORTS FACILITIES

- 33** Danie Craven Stadium
- 34** Coetzenburg Athletics Stadium
- 35** Coetzenburg Tennis Courts
- 36** PSO Club House and Hockey Fields
- 37** Netball Courts
- 38** Swimming Pool
- 39** SU Gymnasium
- 40** Tennis Courts (Residences)
- 41** Old Mutual Sports Centre (squash courts)
- 42** Tennis Courts
- 43** Heidehof Rugby Fields

## ACADEMIC BUILDINGS

- 44** Food Science
- 45** PO Sauer
- 46** Electrical/Electronic Engineering
- 47** Civil Engineering
- 48a** Mechanical/Mechatronic Engineering
- 48a/b** Industrial Engineering
- 49** Process Engineering
- 50** Knowledge Centre
- 51** Engineering, General
- 52** Africa Centre for HIV and AIDS Management
- 53** JC Smuts – Biological Sciences
- 54** De Beers – Chemistry
- 55** Mike de Vries
- 56** Chemistry – first-years
- 57** Inorganic Chemistry
- 58** CGW Schumann
- 59** Van der Sterr
- 61** JS Marais
- 62** Polymer Science

- 63** Visual Arts
- 64** JH Neethling
- 65** Al Perold
- 66** Merensky
- 67** Mathematical Sciences and Industrial Psychology
- 68** Nursery
- 69** Natural Sciences
- 70** Chamber of Mines
- 71** RW Wilcocks
- 72** Old Main Building
- 73** HB Thom Theatre
- 74** CL Marais Library
- 75** Journalism
- 76** GG Cillie
- 77** Arts and Social Sciences
- 78** Lombardi
- 79** Konservatorium (University Choir)
- 80** Theology
- 81** Paul van der Bijl Laboratories
- 82** Agronomy
- 83** Welgevallen Experimental Farm
- 84** Sport Science

## CLUSTERS: PSOs AND RESIDENCES

### Colour Code

- **WOMEN** ■ **MEN**
- **MEN AND WOMEN**
- ▲ **HUBS**

### amaMaties

- 92** Erica
- 93** Nemesia
- 94** Serruria
- 95** Tinie Louw dining hall  
▲ amaMaties-hub: Equité and Libertas PSOs
- 106** Helderberg
- 107** Huis Neethling

### Rubix

- 87** Heemstede
- 91** Nerina
- 108** Metanoia
- A** Pieke PSO
- B** Venustia PSO

### Validus

- 100** Simonsberg
- 101** Huis Visser
- 102** Huis Marais
- 110** Academia
- 111** Concordia
- 112** Goldfields
- 113** Huis McDonald
- 114** Lobelia
- C** Olympus PSO

\* Botmashoogte [off map]

\* ISA [opposite 106]

\* Nooitgedacht [see inset]

### VicMeyr

- 88** Huis ten Bosch
- 89** Lydia
- 90** Minerva
- 103** Dagbreek
- 104** Majuba
- D** Aurora PSO

### Victoria

- 85** Monica
- 86** Harmonie
- 105** Wilgenhof

- 116** Huis de Villiers
- E** Oude Molen PSO
- F** Silene PSO

### Wimbledon

- 96** Sonop (Huis van Niekerk)
- 97** Irene
- 98** Eendrag
- 99** Helshoogte
- 109** Huis Russel Botman House  
▲ Wimbledon-hub: Vesta and Aristeia PSOs

### UNIVERSITY FLATS

- 115** Crozierhof
- 117** Waldenhof

### LISTEN, LIVE AND LEARN INITIATIVE

- 118** LLL village
- LLL** houses

## FACULTIES (IN COLOUR) AND DEPARTMENTS

Accounting	59
African Languages	77
Afrikaans en Nederlands	77
Agricultural Economics	61
<b>AGRISCIENCES</b>	44, 45, 53, 55, 61, 64, 78, 81–83
Agronomy	82
Ancient Studies	77
Animal Sciences	55
Applied Mathematics	51
<b>ARTS AND SOCIAL SCIENCES</b>	63, 70, 71, 73, 75, 77, 79
Biochemistry	53
Business Management	58
Botany and Zoology	69
Chemistry and Polymer Science	54–57, 62
Computer Science (Math. Sc.)	51
Conservation Ecology and Entomology	61
Drama	73
Earth Sciences	70
<b>ECONOMIC AND MANAGEMENT SCIENCES</b>	52, 58–60, 67
<b>EDUCATION</b>	76, 84
<b>ENGINEERING</b>	47–51
English	77
Food Science	44
Forest and Wood Sciences	45
General Linguistics	77
Genetics	53
Geography and Environmental Studies	70
History	71
Horticulture	78
Industrial Psychology	67
Information Science	77
Institute for Wine Biotechnology	64
Institute for Plantbiotechnology	69
Journalism	75
<b>LAW</b>	72
Mathematics (Math. Sc.)	67
Microbiology	53
Modern Foreign Languages	77
Music	79
Philosophy	77
Physics	66
Physiological Sciences	55
Plant Pathology	78
Political Science	77
Psychology	71
Public Development Management	59
<b>SCIENCE</b>	51, 53–57, 59, 62, 65, 66, 67, 70
Social Work	77
Sociology and Social Anthropology	77
Soil Science	78
Sport Science	84
Statistics and Actuarial Science	60
<b>THEOLOGY</b>	80
Visual Arts	63
Viticulture and Oenology	64



# TYGERBERG CAMPUS MAP



## FACULTY OF MEDICINE AND HEALTH SCIENCES

### ACADEMIC BUILDINGS

- 1 Fisan Building
- 2 Education Building
  - Clinical Skills Centre
  - GERGA (Computer Centre)
  - FMHS Library
  - Lecture halls
- 3 Clinical Building
  - Academic departments
  - Centre for Student Administration
  - Cashier

### MEN'S AND WOMEN'S RESIDENCES

- 4 Hippokrates
- 5 Elective Students' Residence
- 6 Huis Kerkenberg
- 7 Meerhoff
- 8 Huis Ubuntu House

### WOMEN'S RESIDENCE

- 9 Huis Francie van Zijl

### SPORT & RECREATION

- 10 Tygerberg Student Centre
  - Sports Hall
  - Cafeteria
  - Gymnasium
  - Book Shop
  - Tygerberg Student Council (TSC)
- 11 Hippokrates Lawn
- 12 Sports Fields

**M** Main Entrance from Francie van Zijl Drive

**P** Parking

Wheelchair access