



Institutional Profile



Stellenbosch
UNIVERSITY
IYUNIVESITHI
UNIVERSITEIT

forward together
sonke siya phambili
saam vorentoe

**Pursue.
Discover.
Together.**



Contents

- 04** Our story
- 06** Fast facts
- 09** Our vision, mission and values
- 10** Our faculties
- 12** Our campuses
- 16** Our research and innovation
- 17** Our partners
- 18** Our world-class facilities
- 22** Our approach to sustainability
- 24** Our leaders and governance
- 26** Our student experience
- 28** Our people
- 30** Our alumni
- 31** A global Matie network
- 32** Campus cycle tour

Our story

With our African roots and global reach, Stellenbosch University (SU) has grown into a true asset to South Africa, our continent and beyond over more than a century. We combine world-class knowledge production and cutting-edge technological innovation to be a thriving, transformative and systemically sustainable university. Our relevant, impactful research makes us ever more agile and responsive to the needs of society, enabling us to confront the complex challenges of our country, region and the globe. Future-fit, inclusive and collaborative, we are moving forward, together.



Fast facts

Qualifications

8 760

qualifications
awarded for 2023



320

doctoral degrees
awarded for 2023



Global ranking

296th

in QS World
University
Rankings 2024/25



301-350th

bracket on Times Higher
Education World
University Rankings 2024



People

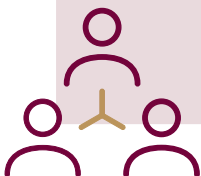
35 000

undergraduate,
occasional and
postgraduate students



3 600

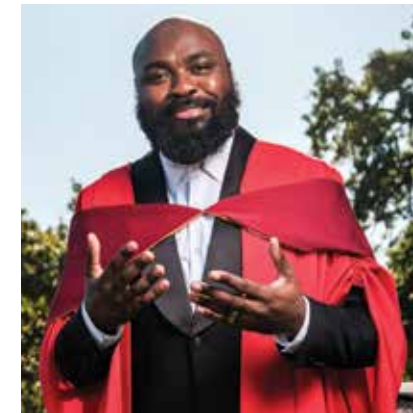
academics and
professional
support staff



*As at June 2024.



Our vision, mission and values



Guided by our vision ...

... of being Africa's leading research-intensive university, globally recognised as excellent, inclusive and innovative, where we advance knowledge in service of society.



Steadfast in our mission ...

... as a research-intensive university where we attract outstanding students, employ talented staff and provide a world-class environment; a place connected to the world, while enriching and transforming local, continental and global communities.



Led by our values ...

Excellence
Compassion
Equity
Respect
Accountability

Our faculties

AgriSciences

Rated one of the best in Africa and among top 100 globally



Arts and Social Sciences

Producing 21st-century critical thinkers



Science

Globally recognised knowledge partner



Medicine and Health Sciences

Launchpad for ground-breaking medical and health sciences innovation



Economic and Management Sciences

Delivering sought-after business leaders and entrepreneurs



Transformative student experience

Renowned academics

With world-leading academics and acclaimed programmes, our ten faculties unlock minds, knowledge and new futures, delivering well-rounded Maties ready and able to be dynamic professionals and engaged citizens.

Military Science

Only one of its kind in the country



Research-intensive

Education

Shaping schooling as SA's oldest education faculty



Engineering

Delivering top-quality engineers



Law

Prime legal education since 1921



10 Faculties

Theology

One of Africa's best for theology, divinity and religious studies



Networked
teaching and
learning



Stellenbosch campus

Located along the historic, oak-lined streets of Stellenbosch, 50 km from Cape Town, this is the oldest and largest of our campuses.

33.9328° S, 18.8644° E





Worcester campus

This newest of our campuses was established in 2010 to offer our Medicine and Health Sciences students exposure to a rural healthcare setting through the Ukwanda Rural Clinical School.

Situated 80 km from Stellenbosch, the campus is next door to Worcester regional hospital and a specialist tuberculosis facility.



Tygerberg campus

This campus, situated in Bellville, 20 km from central Cape Town, is home to our Faculty of Medicine and Health Sciences and encompasses Tygerberg academic hospital. In addition to clinical and education buildings and five student residences, it boasts the recently launched cutting-edge Biomedical Research Institute.

33.9078° S, 18.6123° E



33.8842° S, 18.6266° E

Bellville Park campus

Home to the triple-accredited Stellenbosch Business School and other postgraduate business and planning programmes of the Faculty of Economic and Management Sciences, the Bellville Park campus is situated in Tygervalley, midway between Stellenbosch and central Cape Town.



Saldanha campus

Located on the West Coast, 150 km from Cape Town and 170 km from Stellenbosch, the Saldanha campus houses our Faculty of Military Science. Part of the South African Military Academy, this is where the country's future military leaders are trained.


Our research and innovation

Our research efforts are aimed at both knowledge production and making a real difference in society. To deliver research for impact, we continue to build on our areas of expertise and fearlessly cross disciplinary and geographic boundaries. Recent investments in transdisciplinary research at SU include our School for Data Science and Computational Thinking and the School for Climate Studies, both of which stand alongside and work across our ten faculties. Moreover, our collaborative research network includes just over 350 partner institutions in 67 countries.

At the same time, we use our research output to promote entrepreneurship and facilitate new products that address societal challenges. This has led to a record number of registered trademarks, licences, patent applications, disclosures and spin-out companies.

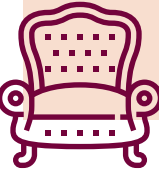


Our research agenda is shaped by five strategic areas – the natural environment, health and human security, social justice and development, human creativity and social innovation, and systems and technologies for the future. Each is aligned with South Africa's National Development Plan, the African Union's Agenda 2063 goals and the United Nations' sustainable development goals, ensuring that our scholarship serves society locally, regionally and globally.




9

centres of excellence



50

research chairs



509

scientists with a National Research Foundation rating

Our partners

We know that what happens in the world shapes our university, and that what happens at our university matters to the world. That is why SU collaborates with a global partnership network that spans six continents.

Collaborations vary from departmental and faculty-level initiatives to broad institutional agreements to work together on some of the world's challenges. The number of partner institutions abroad participating in our dual degree programmes and split-site degree offerings also continues to grow year on year. In addition, we take an active part in various alliances, consortia and initiatives, both globally and closer to home.

Our international partnerships and networks


We have more than

350

bilateral partner institutions in

67

countries.



Number of partnerships by region

Stellenbosch University has established collaborative relationships with a number of prestigious partners at institutional, faculty and departmental level.

193

Europe

institutions in 23 countries

45

Asia and Pacific

institutions in 12 countries

35

North America

institutions in 3 countries

33

Africa

institutions in 22 countries

11

South America

institutions in 4 countries

Network and engagement highlights

Some formal international networks we belong to

- Global Alliance of Universities on Climate (GAUC)
- Consortium of Universities for Global Health (CUGH)
- European Guild of Research-Intensive Universities
- Venice International University
- Alliance of Guangzhou International Sister-City Universities (GISU)

A few African engagement highlights

- African Research Universities Alliance (ARUA)
- Periperi U (aimed at disaster risk reduction and management)
- African Institute for Mathematical Sciences (AIMS)
- Partnership for Africa's Next Generation of Academics (PANGeA)
- NEPAD-supported initiatives

Our world-class facilities

The Biomedical Research Institute (BMRI) is the largest and most sophisticated research complex of its kind on the African continent and in the southern hemisphere. Situated on our Tygerberg campus, the facility houses more than 500 biomedical researchers and students, including some of the world's foremost scientists in the fields of bioinformatics, tuberculosis, neuroscience and urology. It also houses the Centre for Epidemic Response and Innovation (CERI), a leader in genomic sequencing for vaccine development and evaluation in South Africa, as well as the Biorepository Unit, a state-of-the-art facility that provides secure, cost-effective long-term sample storage. The latter is enabled by the Hamilton BIOS L5, the first fully automated biorepository system in the southern hemisphere. The BMRI also received a four-star rating from the Green Building Council of South Africa.





The Jan Mouton Learning Centre, a benchmark for future campus development, is a contemporary, multifunctional facility designed to support modern interactive and hybrid learning pedagogies. Centrally located on the Stellenbosch campus, it features advanced technological infrastructure for lectures, streaming, conferencing and collaborative classes. The centre prioritises sustainability with a low-carbon footprint, greywater system and regional chiller plant for air-cooling, with provision for future solar photovoltaic installations.

The **Stellenbosch University Library** has been refurbished to provide diverse, cutting-edge spaces and technologies, reflecting the library's mission to facilitate effective knowledge discovery and creation. The renovation aligns with the University's commitment to innovative and world-class research and education. The library's Makerspace fosters an environment of innovation and collaboration that enables a range of activities, from 3D scanning to small robotics development.

Maties Sport has been enhanced with a multimillion-rand upgrade of the Coetzenburg athletics track, including a new A-grade track and state-of-the-art lighting, reaffirming its status as an international athletics venue.



The Bellville Park campus has undergone significant refurbishment, leveraging a nearby deep-water lake to develop a cooling and heating plant for the campus facilities.



The **Engineering campus** is being upgraded to support decades of future teaching and learning. This includes new laboratories and refurbishments in the Mechanical and Mechatronic, Civil as well as Electrical and Electronic Engineering buildings.

The Stellenbosch Institute for Advanced Studies, established in 1999, provides a creative space for high-level interdisciplinary research. The Wallenberg Research Centre, opened in 2007, is a modern facility designed for advanced research, featuring individual and communal workspaces and a multipurpose conference section.

Our approach to sustainability

Stellenbosch University is committed to systemic sustainability across ecological, social and economic dimensions. Our Sustainable Development Impact Hub (SDG/2063 Impact Hub), established in 2021 in the Centre for Collaboration in Africa at SU International, plays a crucial role in aligning the University's efforts with global and African sustainable development goals.

We strive for systemic sustainability, which includes people, places, economic prosperity, the environment and responsible corporate governance. We are developing SU in a manner that respects ecological thresholds and enhances society and the natural environment. In this way, we want to avoid the depletion or degradation of natural resources and ensure diverse, resilient and productive ecosystems for current and future generations.

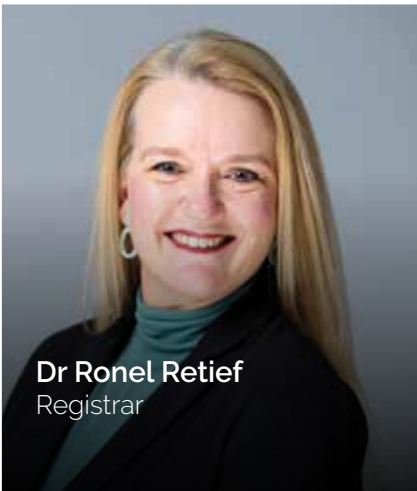
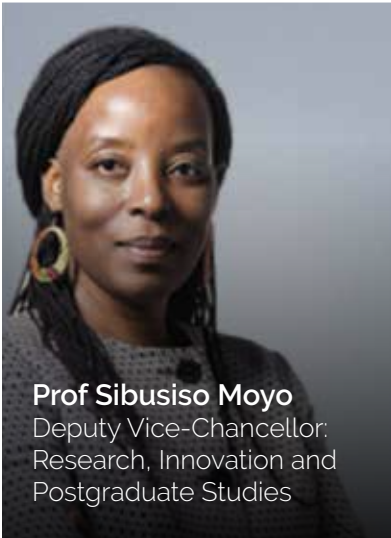


Our leaders and governance

The following five statutory bodies fulfil a vital governance oversight function:

- Council**
Governs our assets, sets institutional strategies, and determines policies on academic and operational matters
- Senate**
Accountable to Council for decisions on academic and research functions
- The Students' Representative Council (SRC)**
Represents our students' interests in Council and other university, national and international bodies
- The Convocation**
Gives alumni a say in university matters
- The Institutional Forum**
Advises Council on the implementation of the Higher Education Act and national policies, senior management appointments, codes of conduct, and mediation and dispute resolution

The Rectorate takes charge of our day-to-day operational management. They are:



Our student experience

Teaching and learning

A firm believer in networked and collaborative teaching and learning, we create communities for meaningful learning among students and staff. To us, learning is a partnership, and students are co-creators of knowledge. This encourages intellectual inquisitiveness and the kind of critical and creative thinking that society needs.

As a residential university, we continue to serve students with classroom-based face-to-face teaching. But we are also moving with the times. Harnessing the latest technologies, we are extending our learning spaces and cracking open new knowledge markets. Broad Wi-Fi coverage, livestreaming of lectures, our Telematic Services and the SUNLearn mobile app help us push the boundaries of our teaching. Our new edX StellenboschX online course portfolio offers

further exciting opportunities for students to take part in our academic offering, wherever, whenever.

Transformative experience

At SU, it's less about what you become, and more about #whoyoubecome. We intend to provide every student with a transformative experience, equipping them to lead and excel in a diverse world. Opportunities abound for all Maties to flex their faculties and grow, including a well-established and accredited co-curricular offering.

Campus life

Living

Student accommodation options include undergraduate and senior residences, a number of Private Student Organisation wards, and our Listen, Live and Learn houses. All offer full internet connectivity and communal living areas where students can socialise, watch TV or just hang out.

Irrespective of their living arrangements, all Maties belong to one of seven cluster communities – a meeting space for private and residence students, and a place of belonging that promotes student success. Our cluster hubs offer physical on-campus spaces for maximum engagement.

Wrap-around support

We understand that adjusting to a new home and community on top of starting a new academic career can be stressful. That is why our student mentors are trained to ease newcomer students into university life. Moreover, qualified psychologists, psychometrists and social workers deliver a suite of on-campus student-centred development and support services.

Engaging

Proudly continuing our long sports tradition, Maties Sport nurtures talented student athletes, while also promoting an active lifestyle among the entire SU community. Although our range of sport clubs cater for all interests, our high-performance sporting codes are athletics, cricket, football, hockey, netball, rugby, basketball and swimming. Our top-notch sporting facilities include a 14 000-seater athletics stadium, two artificial grass pitches, nine hockey fields, six cricket fields, nine squash courts, eight netball courts, 15 rugby fields, 27 tennis courts and six clubhouses.

Our diverse student societies – catering for dancing to debating and everything in between – offer students a chance to meet new people with similar interests and maintain a balanced lifestyle. Societies fall into the broad categories of social awareness (environment, gender), religion and spirituality, culture, hobbies and the arts (music, dance and photography), academics (Golden Key and debating) and community service.



Our people

Our people are one of our enablers that make everything possible. We want to see them thrive. Therefore, as part of our efforts to be an employer of choice, we embrace staff diversity and equity, leverage unique talents and strengths, promote lifelong learning, and celebrate our employees' achievements. Our talent acquisition and management plan includes equitable remuneration, performance management and rewards, and the continuous development of staff's competencies, talent and leadership. We also continue to streamline our human resources processes by harnessing technology and digitalisation.

With our comprehensive staff health and wellbeing programme, we build a personnel corps who continuously feel part of SU's core business and experience their work as meaningful and important. The wellbeing offering includes individual leadership coaching, physical health guidance, encouraging active lifestyles, financial management tips, and confidential counselling. Workshops and training also help our staff improve their transformation competencies and intercultural communication to draw strength from their diversity.



... we embrace staff diversity and equity, leverage unique talents and strengths, promote lifelong learning, and celebrate our employees' achievements.



Our alumni

Our students' journey with us does not end on graduation day. We remain their intellectual home and keep our alumni connected with their alma mater long after the euphoria of graduation has passed.

Through our network of alumni hubs across the world, our global community of over 200 000 Maties keep in touch with one another and with SU. Alumni also subscribe to the Maties Connect platform to keep up to date with SU news and receive opportunities to connect, network and grow. Our annual Maties Homecoming in Stellenbosch is a memorable event comprising class and residence reunions, campus tours, networking, business breakfasts, sporting activities, and socials.

A global Matie network

Maties are forming communities all across South Africa, Africa and the world.

Our chapters allow our alumni to network with other Maties, engage, volunteer their time or talent, and explore ideas.



48 chapters
worldwide

CANADA

Calgary
Toronto
Vancouver

USA

Chicago
Colorado
Georgia
Kansas City
Los Angeles
New York
San Diego
San Francisco
Seattle
Texas
Washington DC

UAE

Dubai

UK

Bristol
Cambridge
Cardiff
Edinburgh
Guernsey
Jersey
London
Oxford
St Albans
West Midlands

IRELAND

Dublin

EUROPE

Amsterdam
Brussels
Paris
Lyon
Luxembourg
Berlin
Munich
Stuttgart
Frankfurt

NAMIBIA

Windhoek

SOUTH AFRICA

Western Cape

Stellenbosch
Paarl
Cape Town
Breede River
Gansbaai
Elgin

Eastern Cape

Gqeberha
East London

Gauteng

Johannesburg
Pretoria

KZN

Durban
Pietermaritzburg

Campus cycle tour



Join German trials cyclist Nils Riecker as he explores our Stellenbosch campus on his bike, showcasing his skills and the campus's scenic beauty.





A I PEROLDGE



Stellenbosch
UNIVERSITY
IYUNIVESITHI
UNIVERSITEIT

Journey with us

www.sun.ac.za
+27 (0)21 808 9111
info@sun.ac.za

