



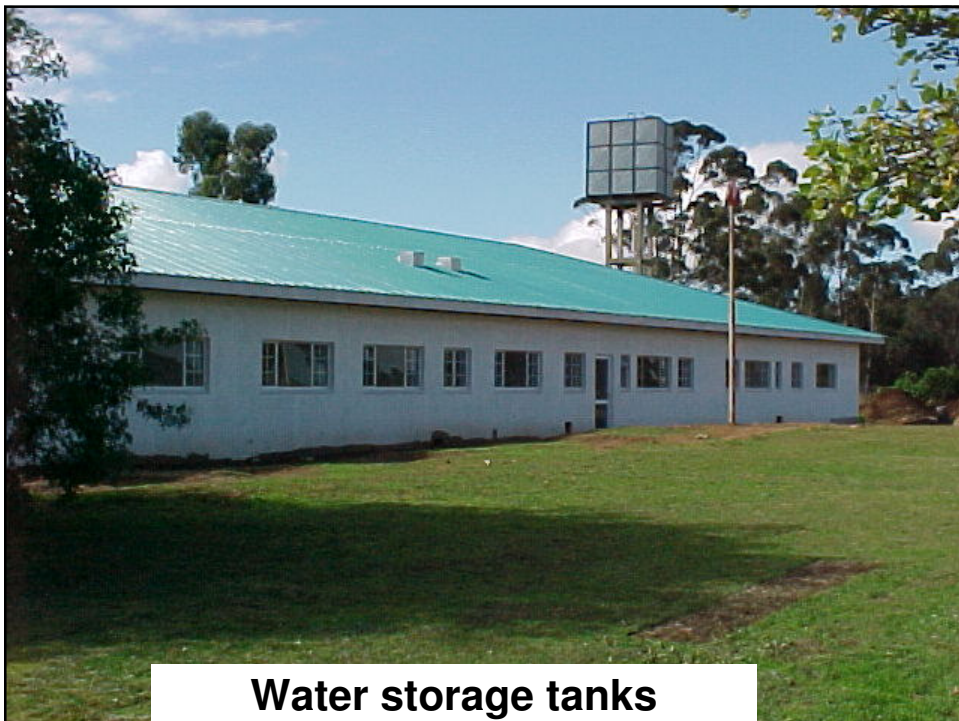
**Legionnaires Disease:
Hospital Engineering Perspective**



WATER STORAGE



Water storage tanks



Water storage tanks

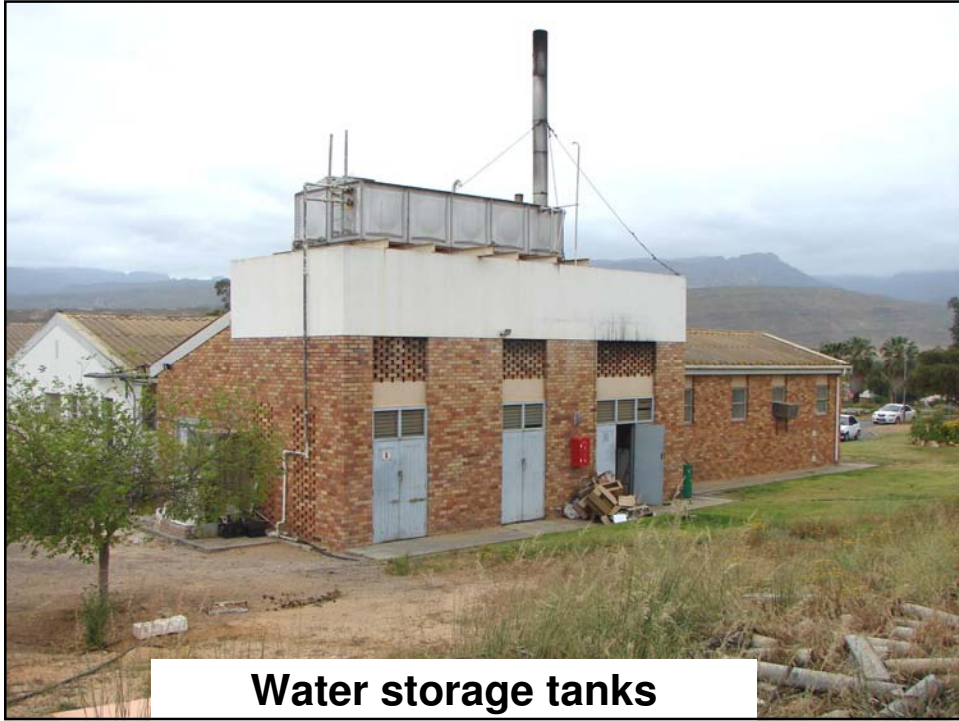


Hygiene

Are the tanks ever cleaned?

Are the lids closed?

What about chlorination loss?



Water storage tanks



Storage tank at ground level



Booster pump at ground level

COOLING TOWERS

LEGIONELLA & TEMPERATURE

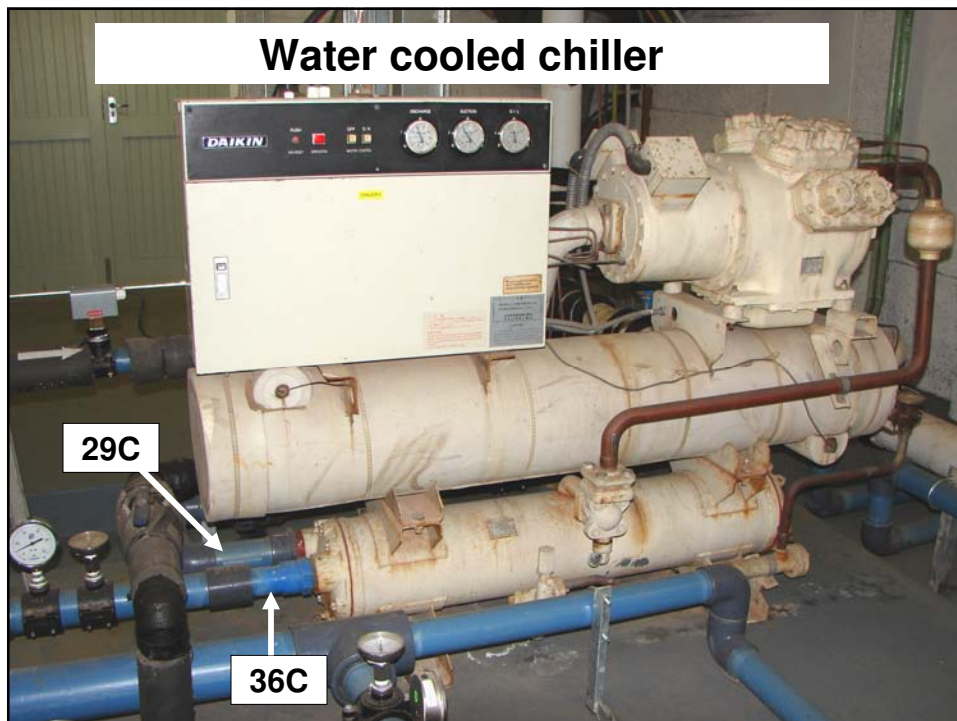
Ideal temperature to multiply **32 C to 42 C**

Greatest increase in viable counts **37 C to 42 C**

CHILLER COOLING TOWERS

Cooling tower out (condenser in) **29 C**

Condenser out (cooling tower in) **36 C**





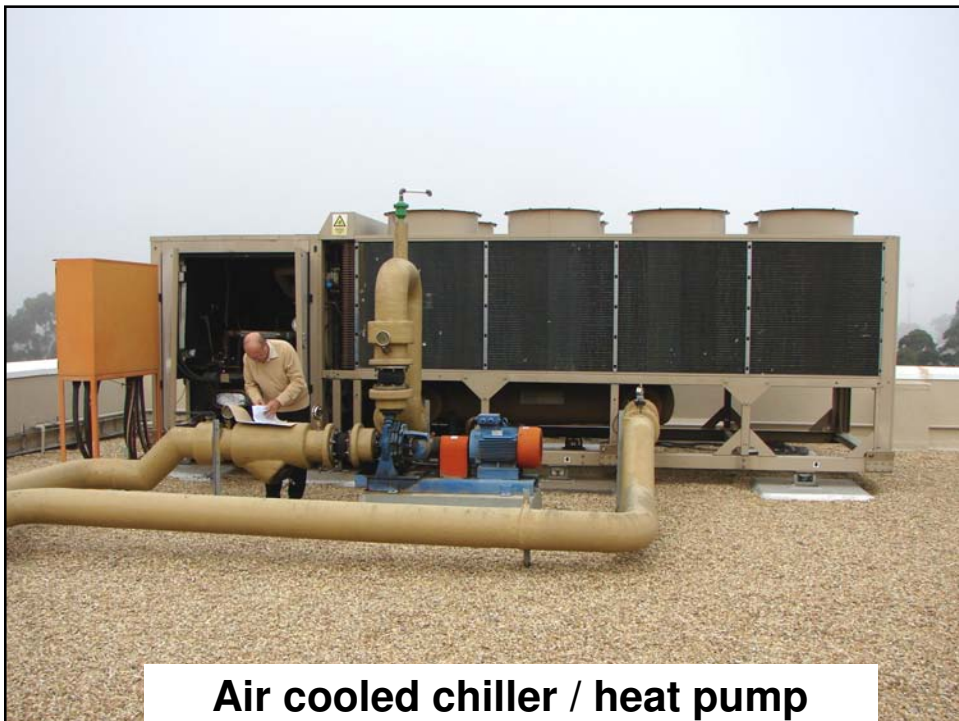
Water cooling towers



Air cooled chiller



Air cooled chiller



Air cooled chiller / heat pump



Split unit air cooled condensers

DOMESTIC WATER HEATING

LEGIONELLA & TEMPERATURE

Destroyed almost instantaneously at **70 C**

Decimal reduction time of 2 minutes at **60 C**

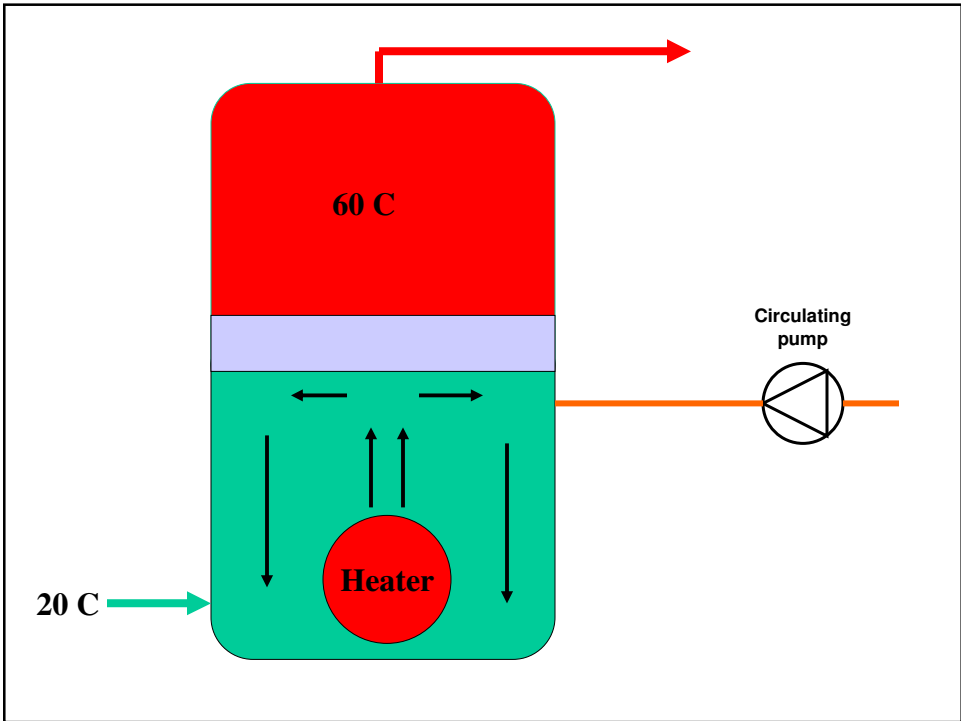
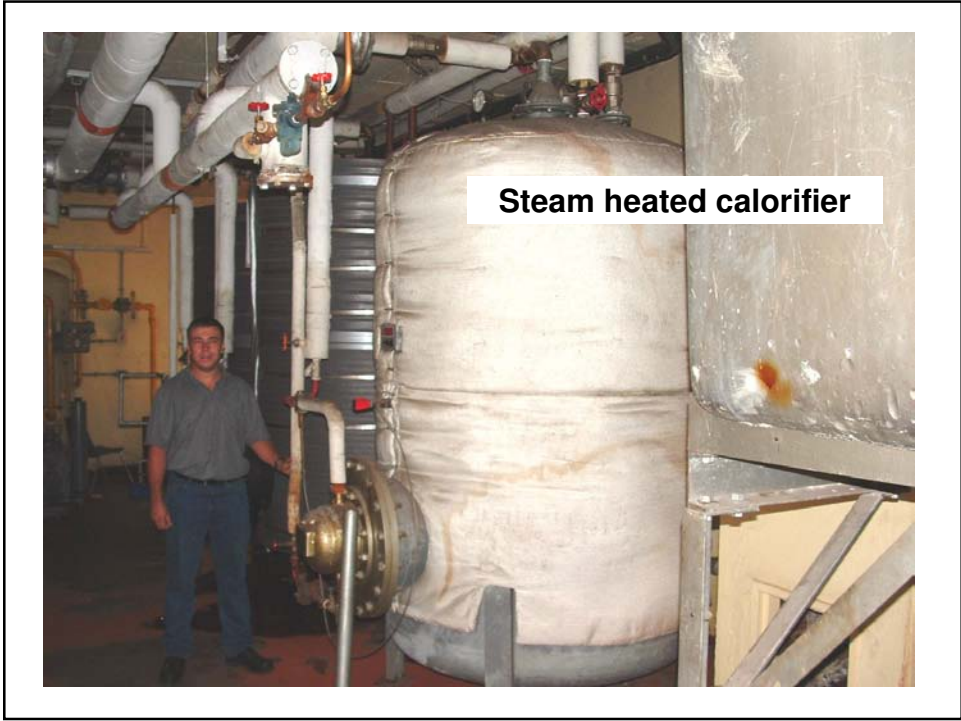
Decimal reduction time of 120 minutes at **50 C**

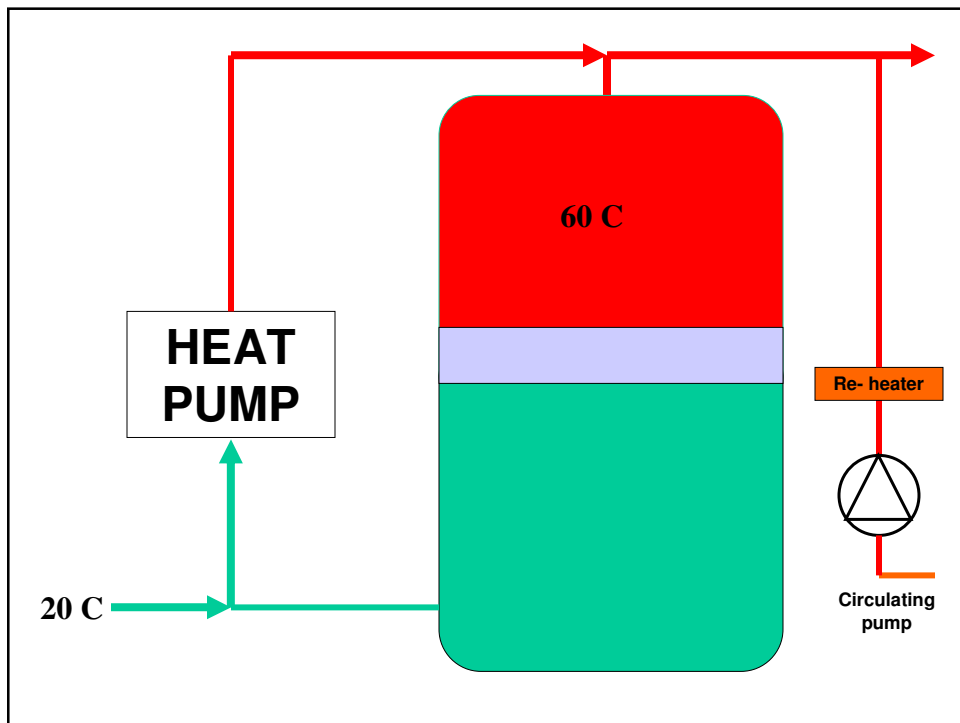
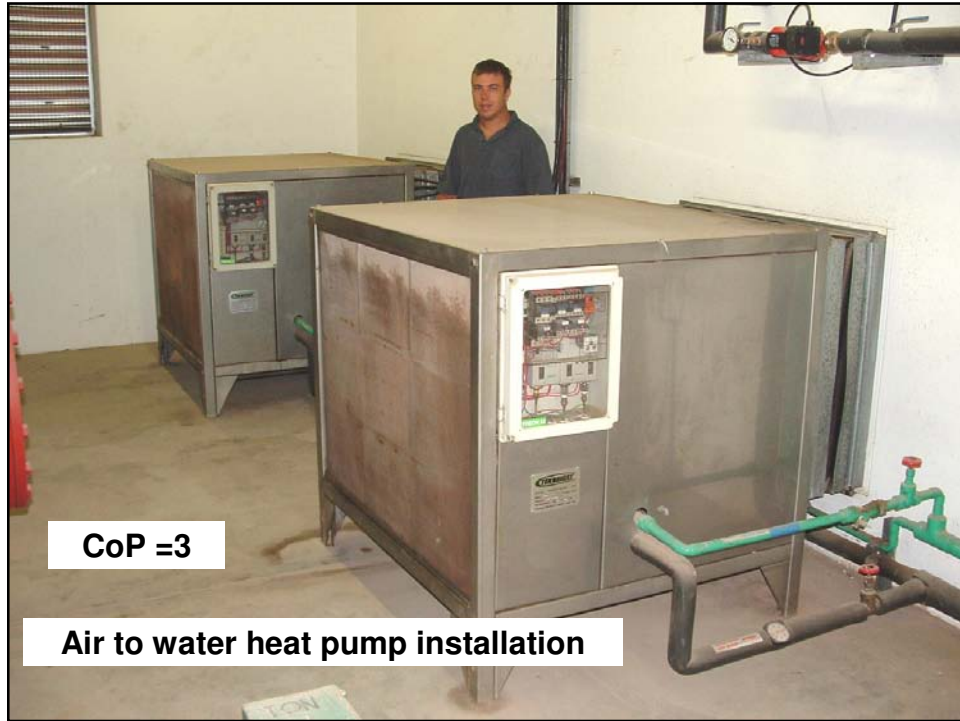
Survive and multiply between **25 C** and **45 C**

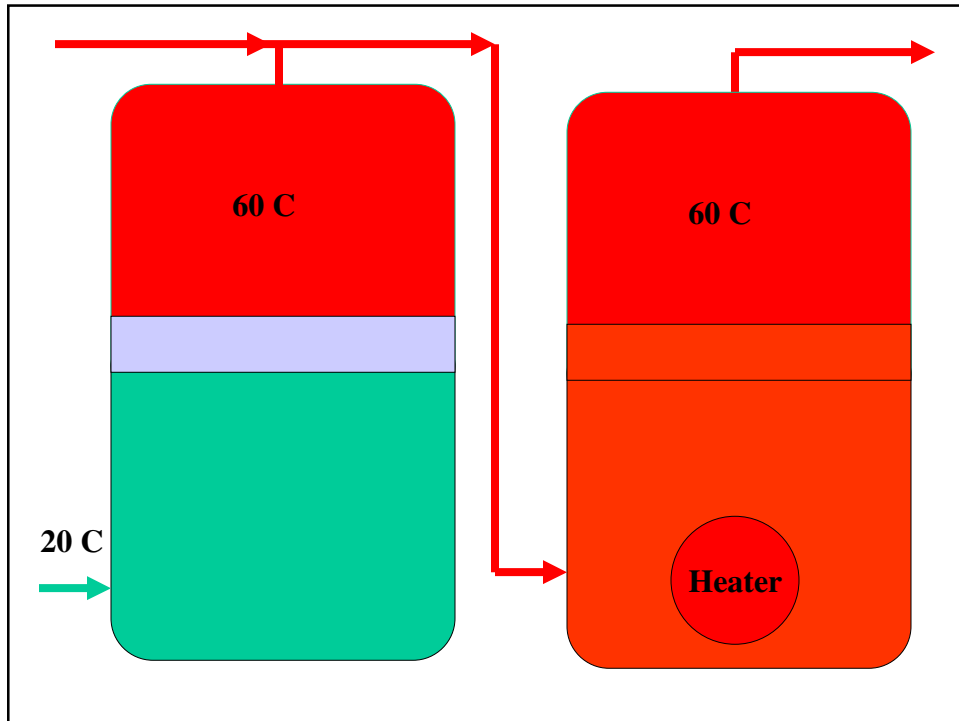
Ideal temperature to multiply **32 C** to **42 C**

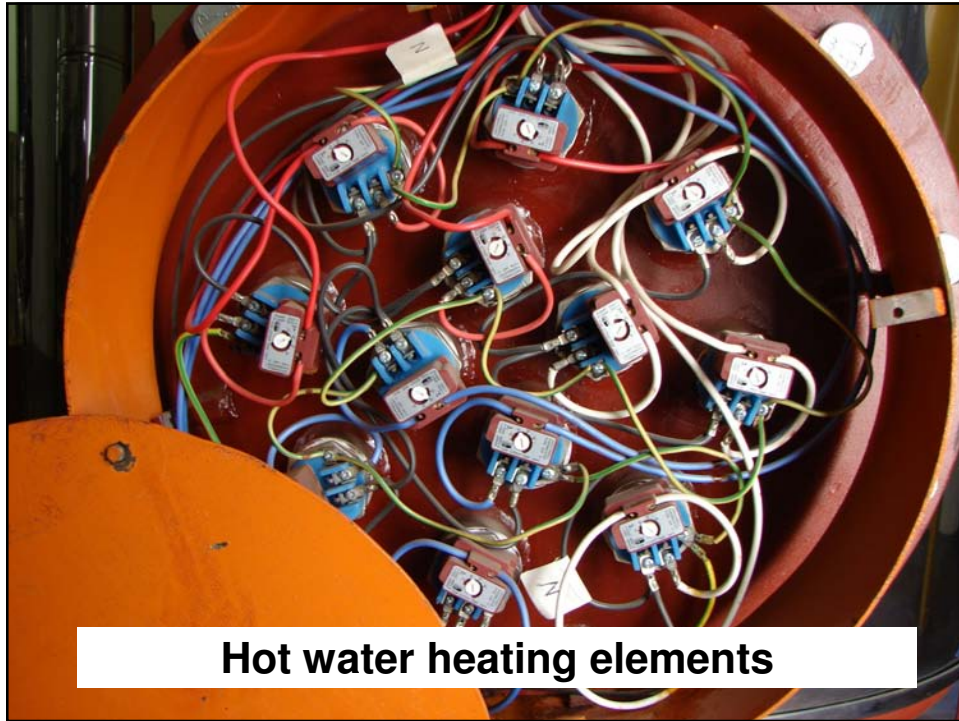
Greatest increase in viable counts **37 C** to **42 C**

Little or no increase below **20 C**









Domestic Hot Water Cylinders





SWITCHING OFF THE HOT WATER CYLINDER

Actual figures for a family of 3:

Energy with heating on continuously: **8,78 KWh/day**

Energy switching off 18 hours/day: **7,98 KWh/day**

Energy saving: **0,80 KWh/day**

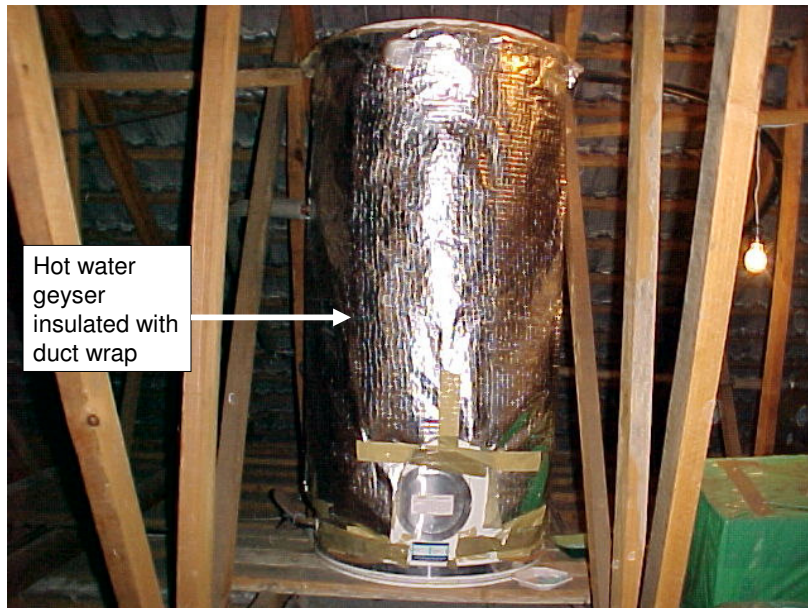
Cost saving: **R25-56 per month**

NB. The cylinder is very well insulated.

SWITCHING OFF THE HOT WATER CYLINDER

1. Maximum saving is achieved if the heating is switched off after ablutions – i.e. when the tank is cool.
2. Heating should be immediately before ablutions.
3. Heat to 50C for maximum saving.

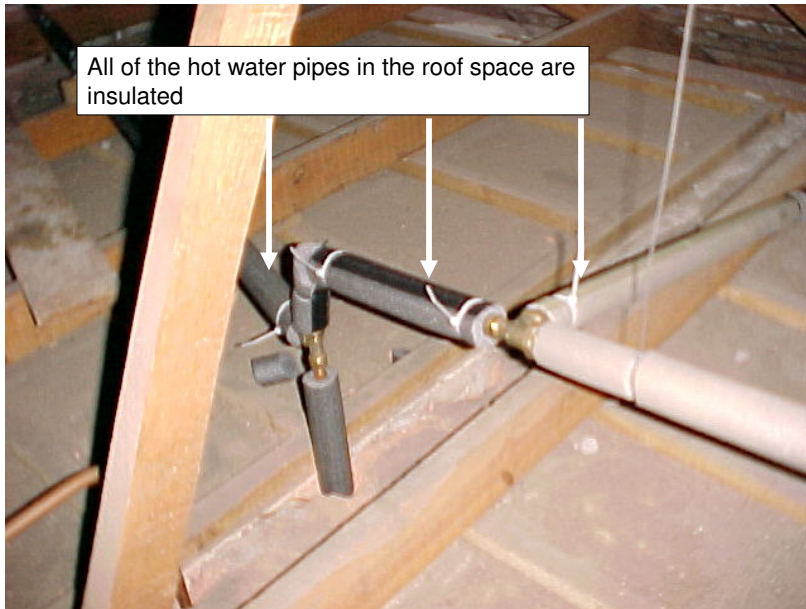
Result: for approx 18 hours water is stored in the range 30 C to 45 C range.



All of the hot water pipes in the roof space are insulated



All of the hot water pipes in the roof space are insulated



WATER SAVING



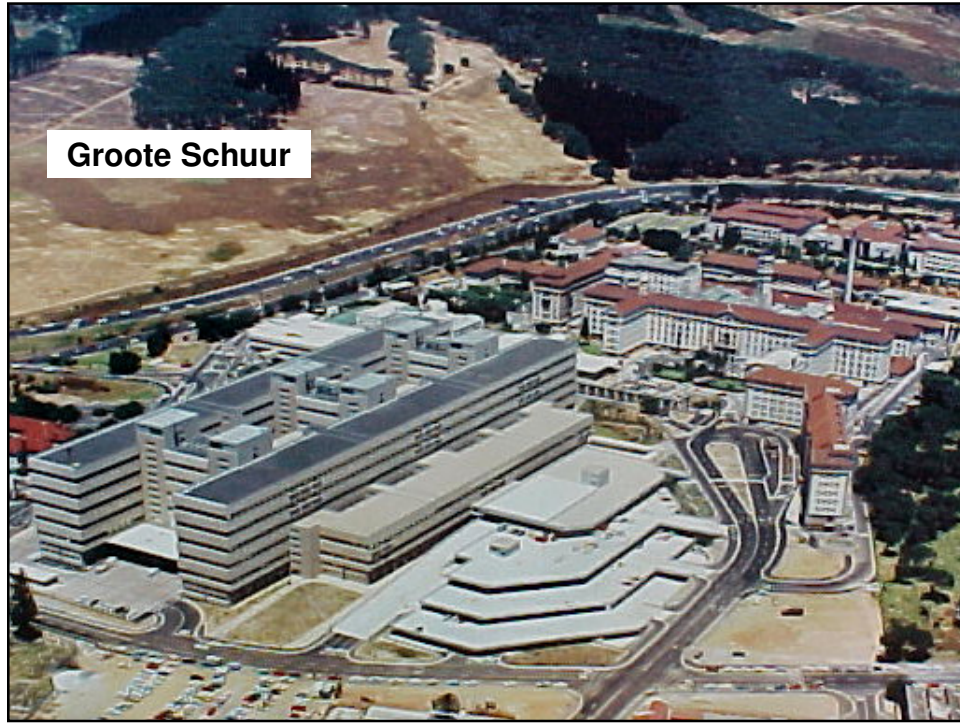
COMBINED RISK

COMBINING THE DOMESTIC HOT WATER RISKS

1. Low maximum temperature of 50 C.
2. Biofilm in tanks and pipes.
3. Storage for long periods below 45 C.
4. Showering under low flow shower heads.

Humidifiers





Groote Schuur



Humidifiers



Thank you