



UNIVERSITEIT•STELLENBOSCH•UNIVERSITY  
jou kennisvenoot • your knowledge partner

**'n Nuwe Era :  
Fasiliteite & Mobiliteit vir 'n  
21ste Eeuse Universiteit**

***A New Era:  
Facilities & Mobility for a  
21st Century University***

2012/02/28

**Prof H Russel Botman**

Rektor en Visekanselier / Rector and Vice-Chancellor

---

Volhoubaarheid  
Sustainability 

---



# ONS/OUR STELLENBOSCH

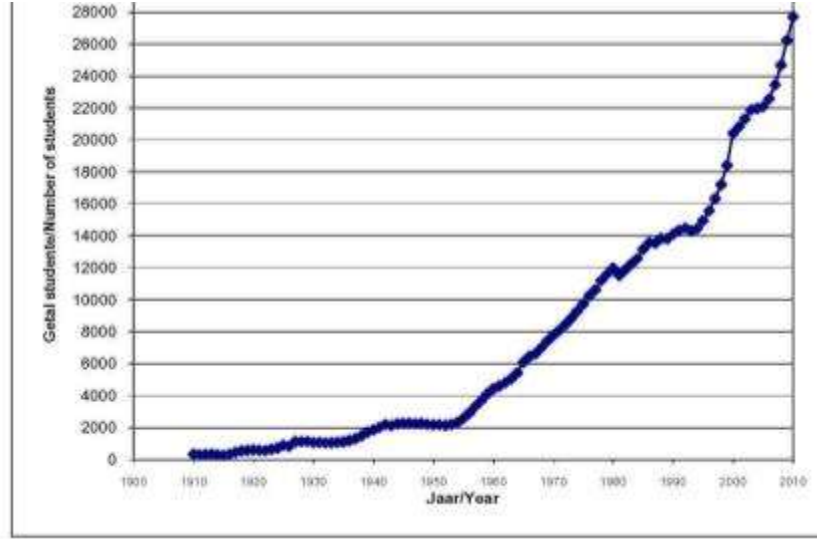
## Universiteitsdorp / *University Town*



© FOTO DEUR ERHARDT THIEL



# ONGEKENDE GROEI / UNPRECEDENTED GROWTH





## Eie motors:

- 43% van studente
- 82% van personeel

## *Parking shortage:*

*Bays: 7 200*

*@ ea. R25 000*

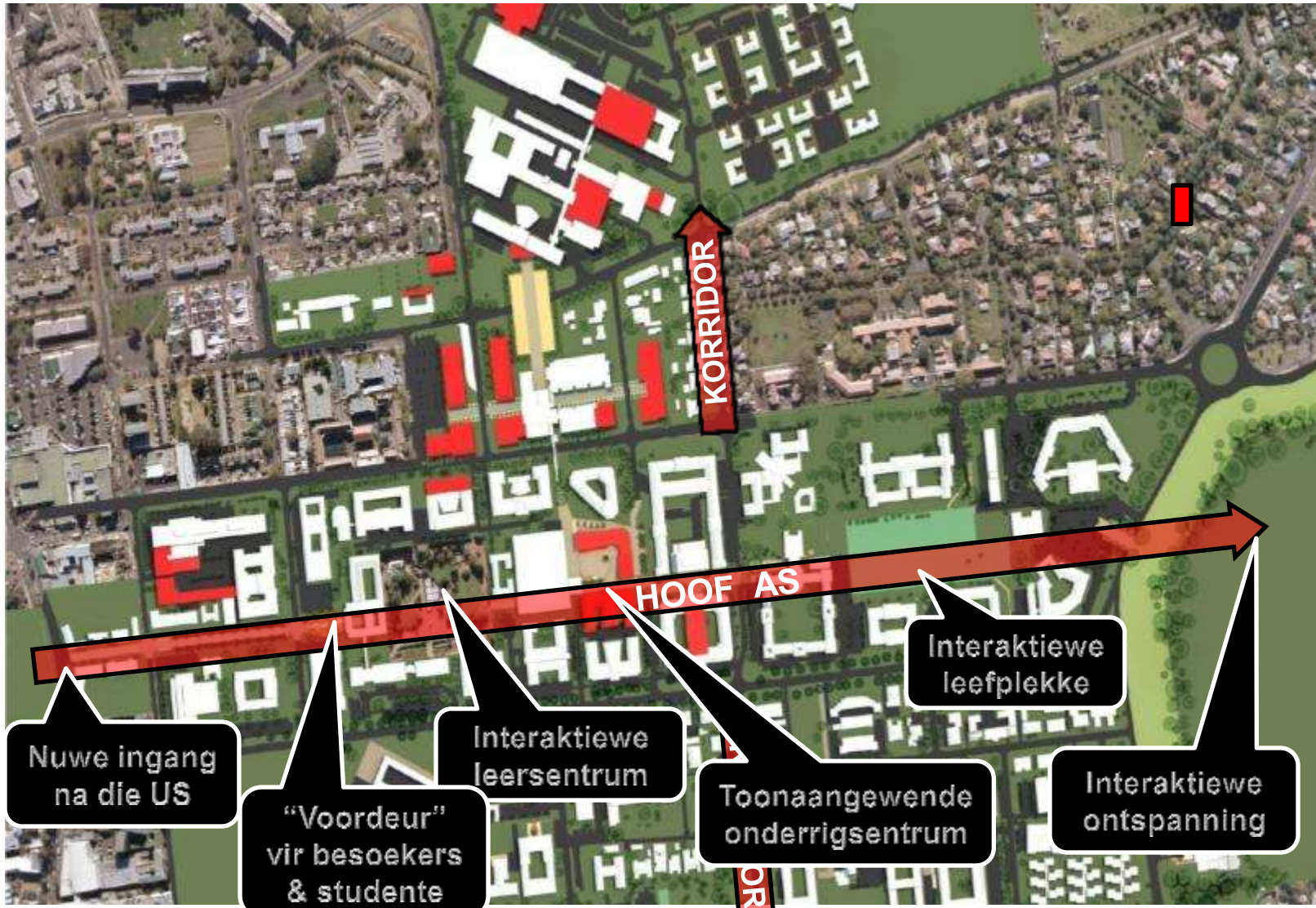
*= R180 000 000*







# WOONERF-BENADERING

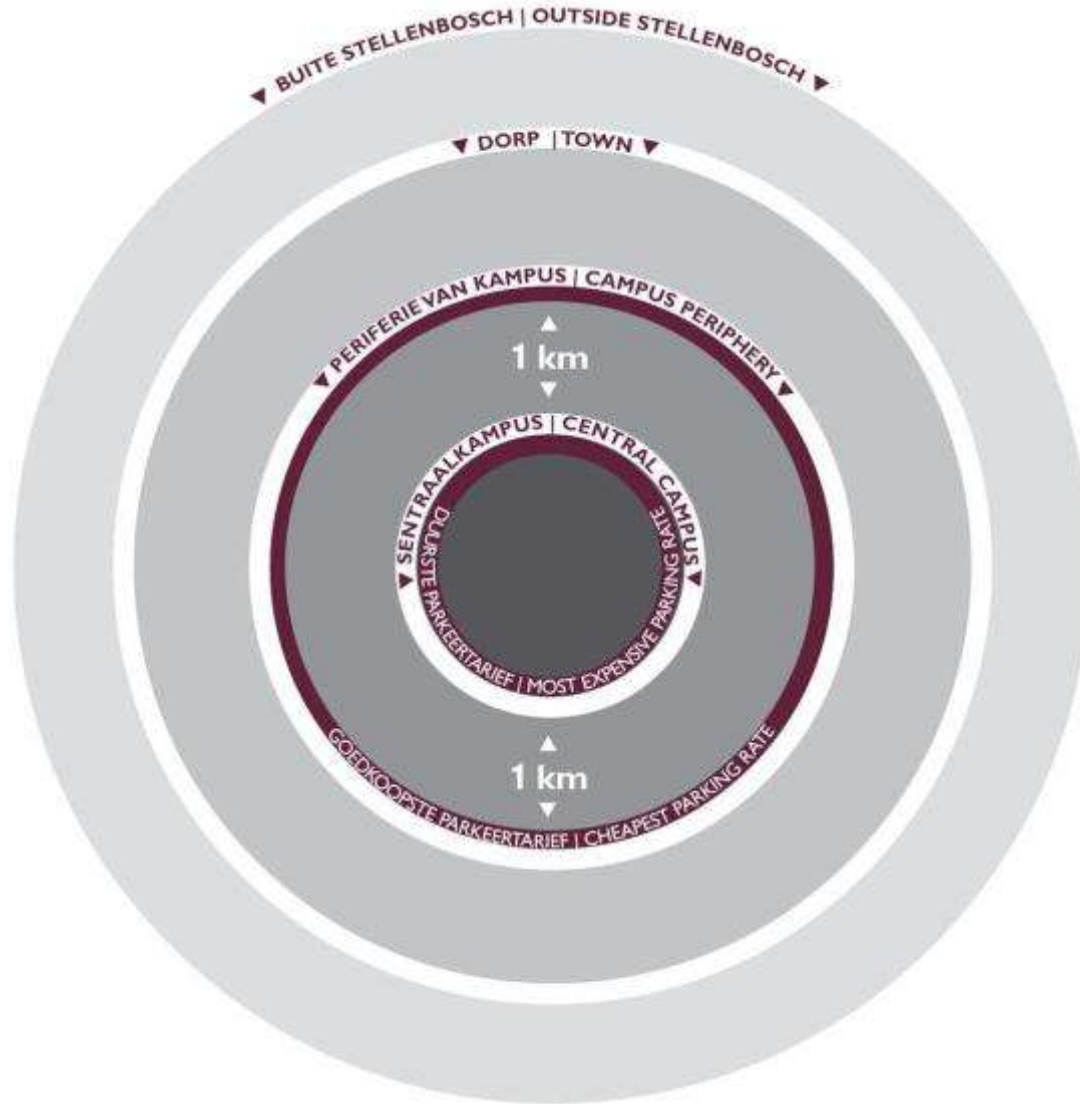


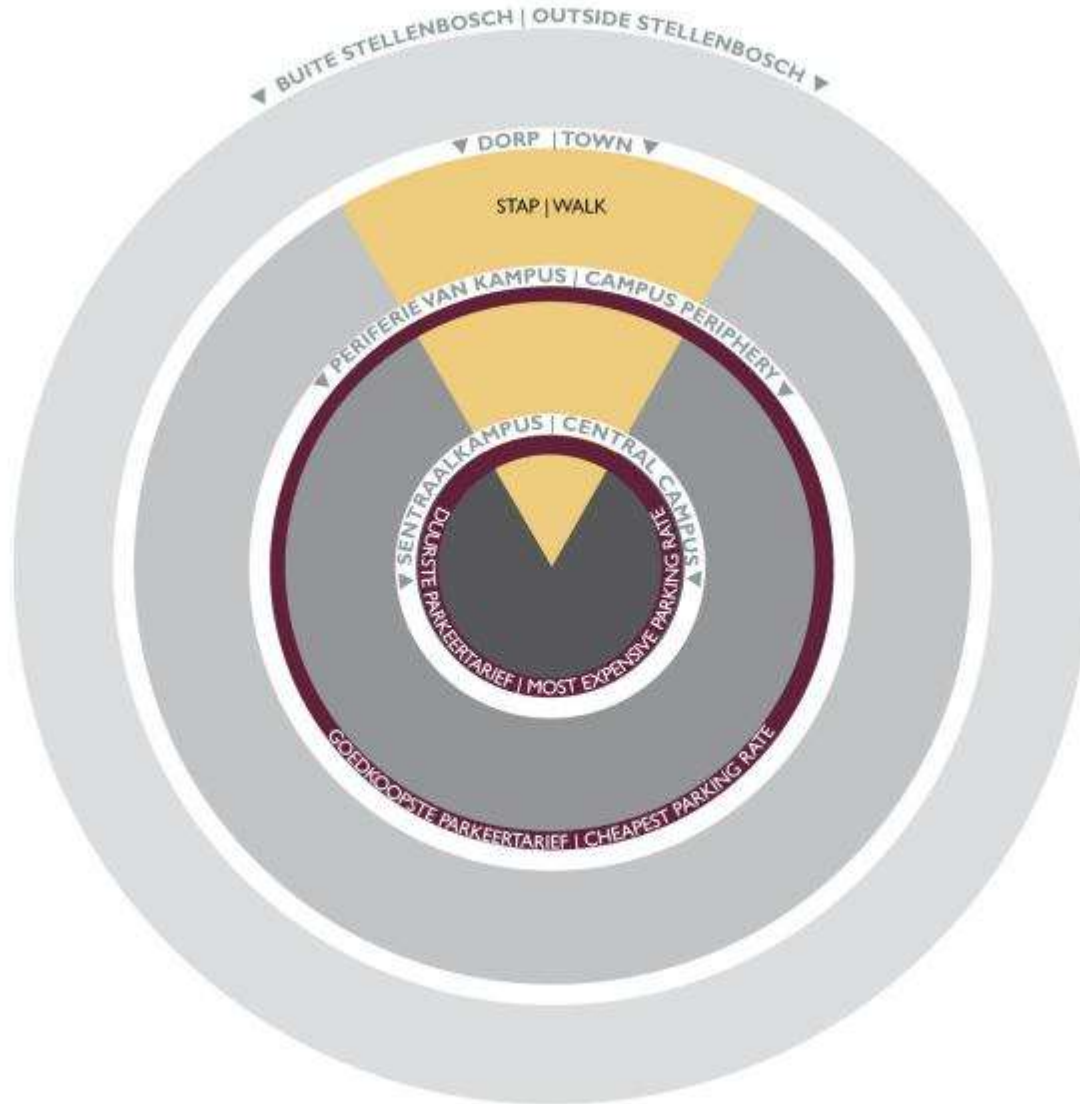


# HOE BEWEEG ONS ROND?

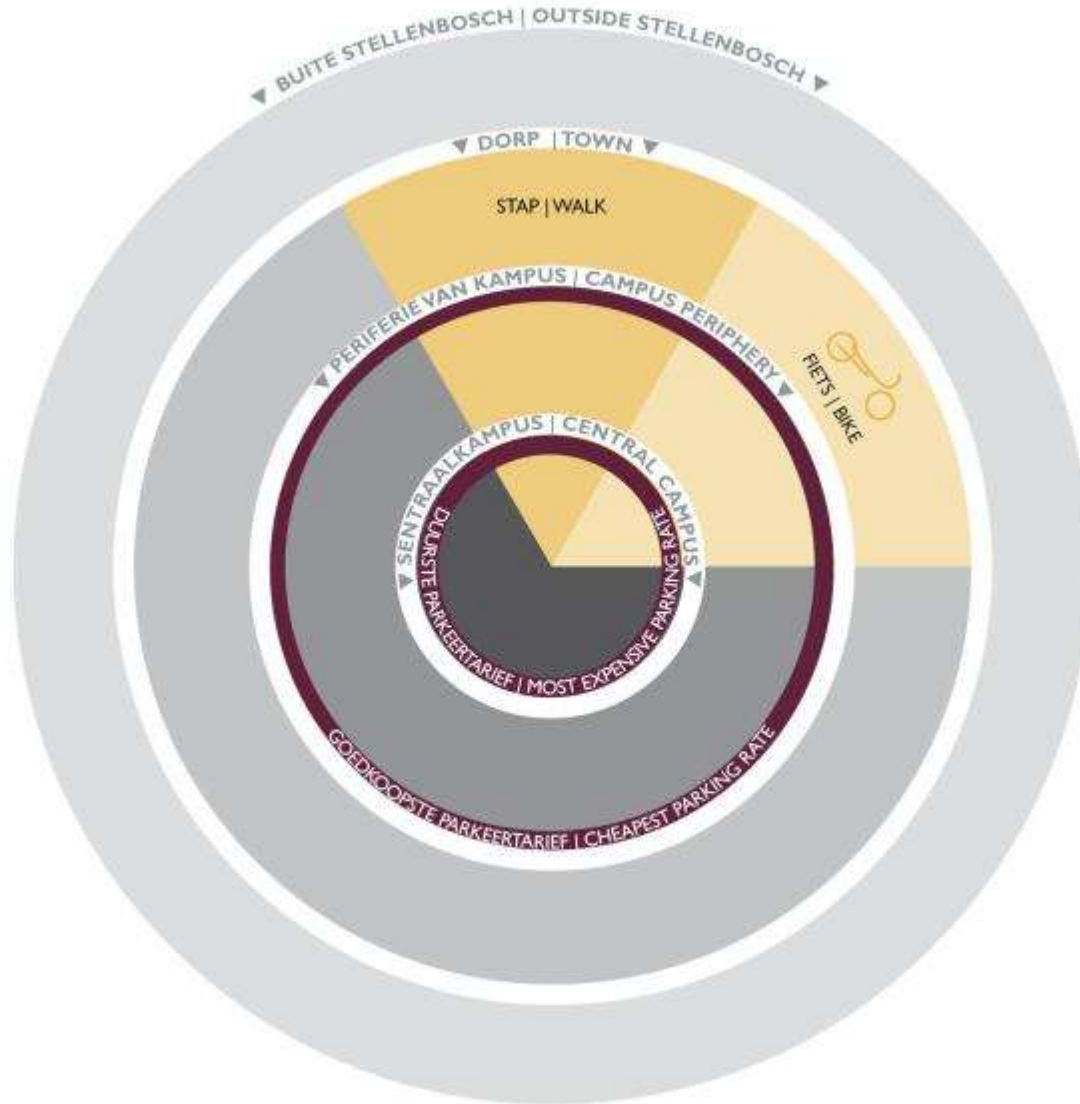
**MATIE**

MOBILITEIT  
MOBILITY







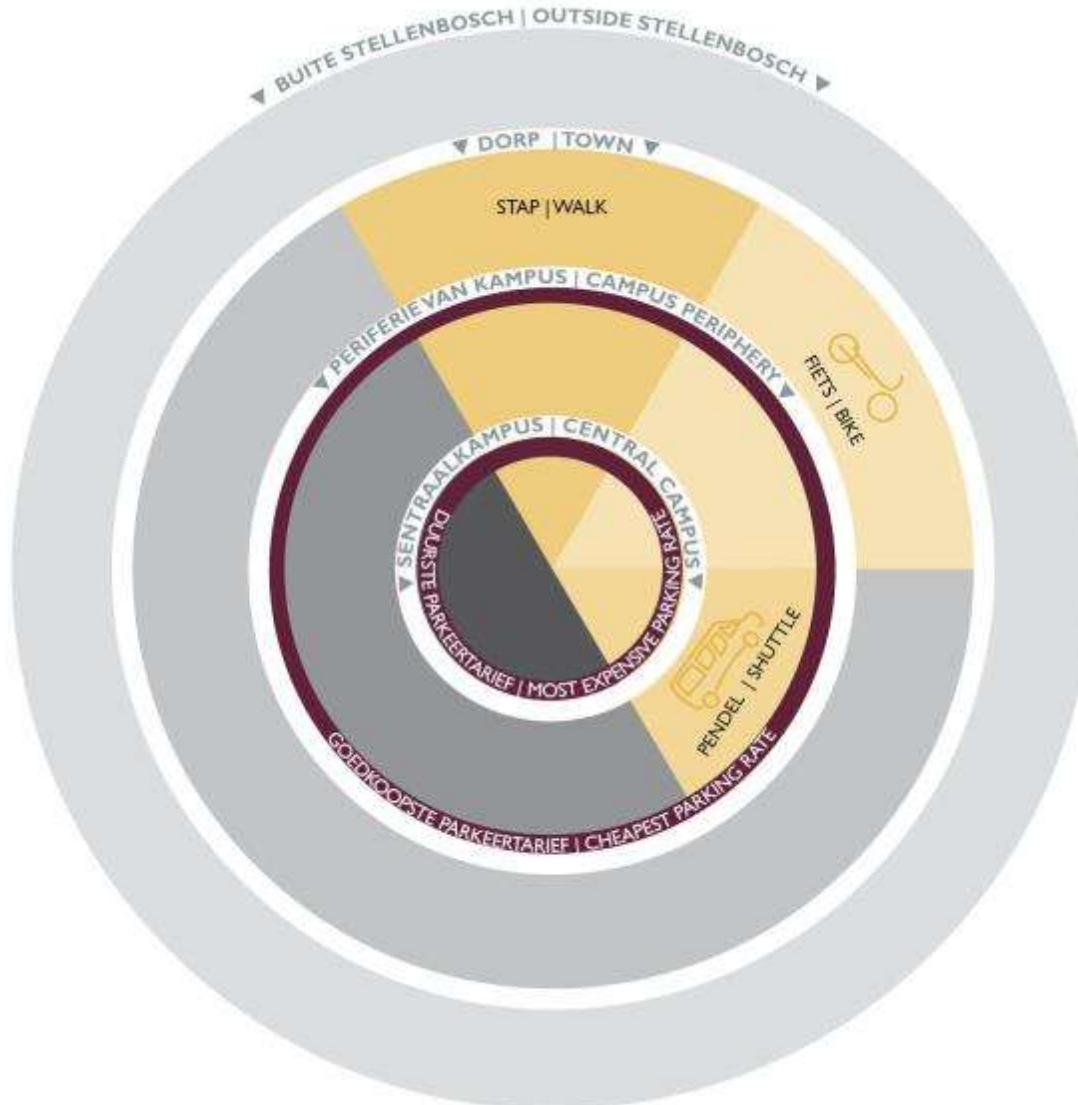




# PENDEL / SHUTTLE

**MATIE**

MOBILITEIT  
MOBILITY

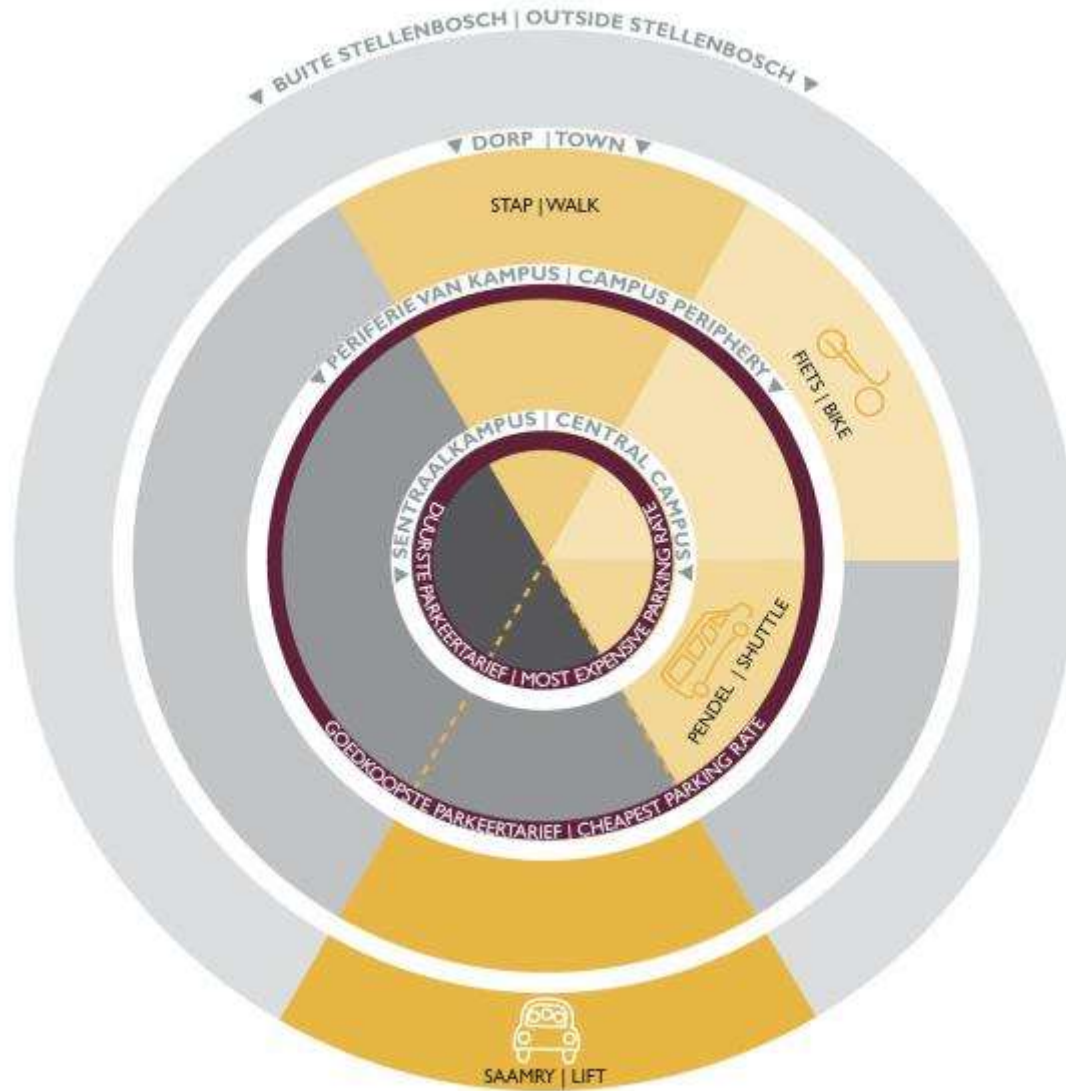




# SAAMRY / LIFT CLUBS

**MATIE**

MOBILITEIT  
MOBILITY

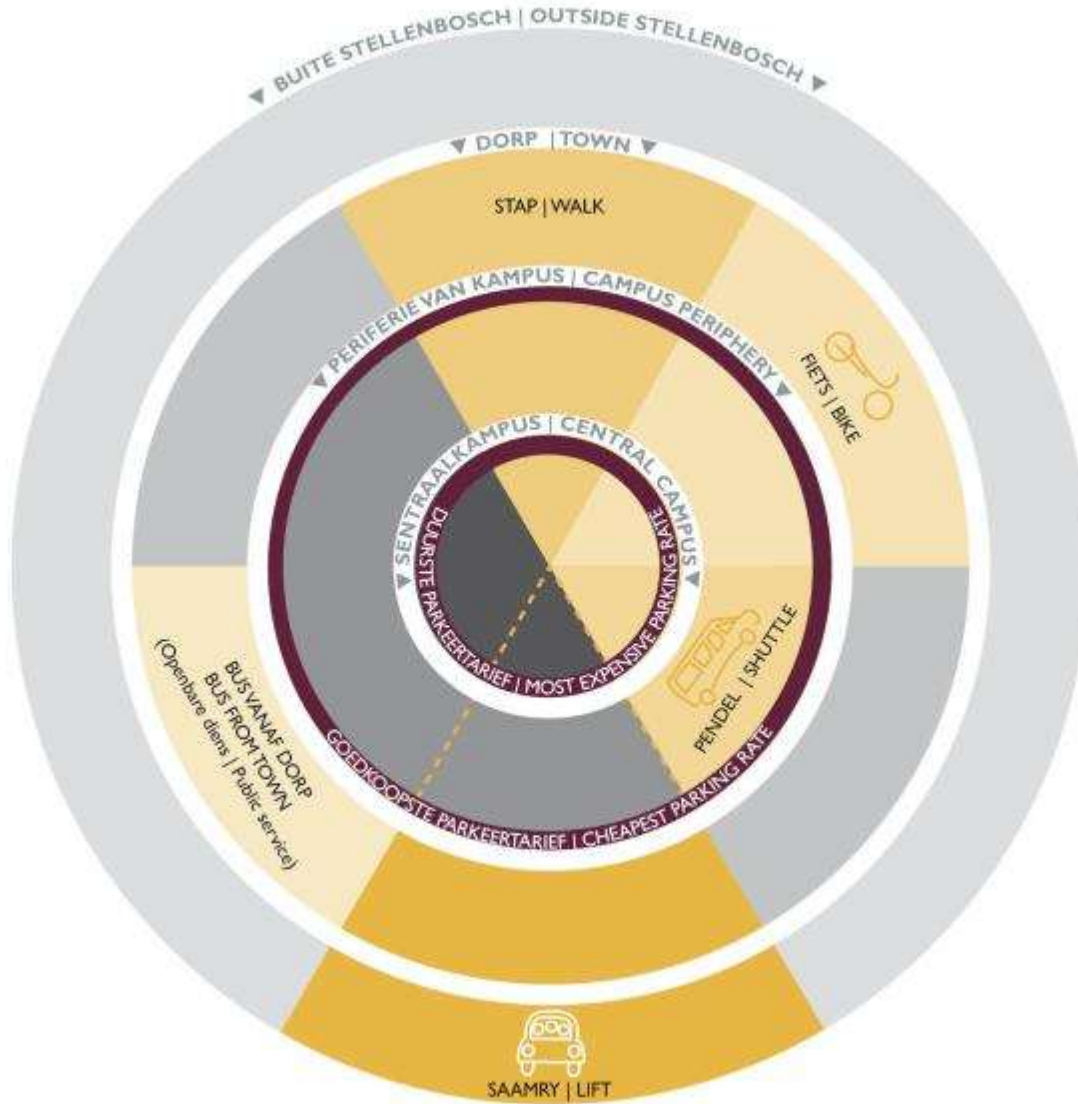




# OPENBARE VERVOER (Plaaslik)

**MATIE**

MOBILITEIT  
MOBILITY

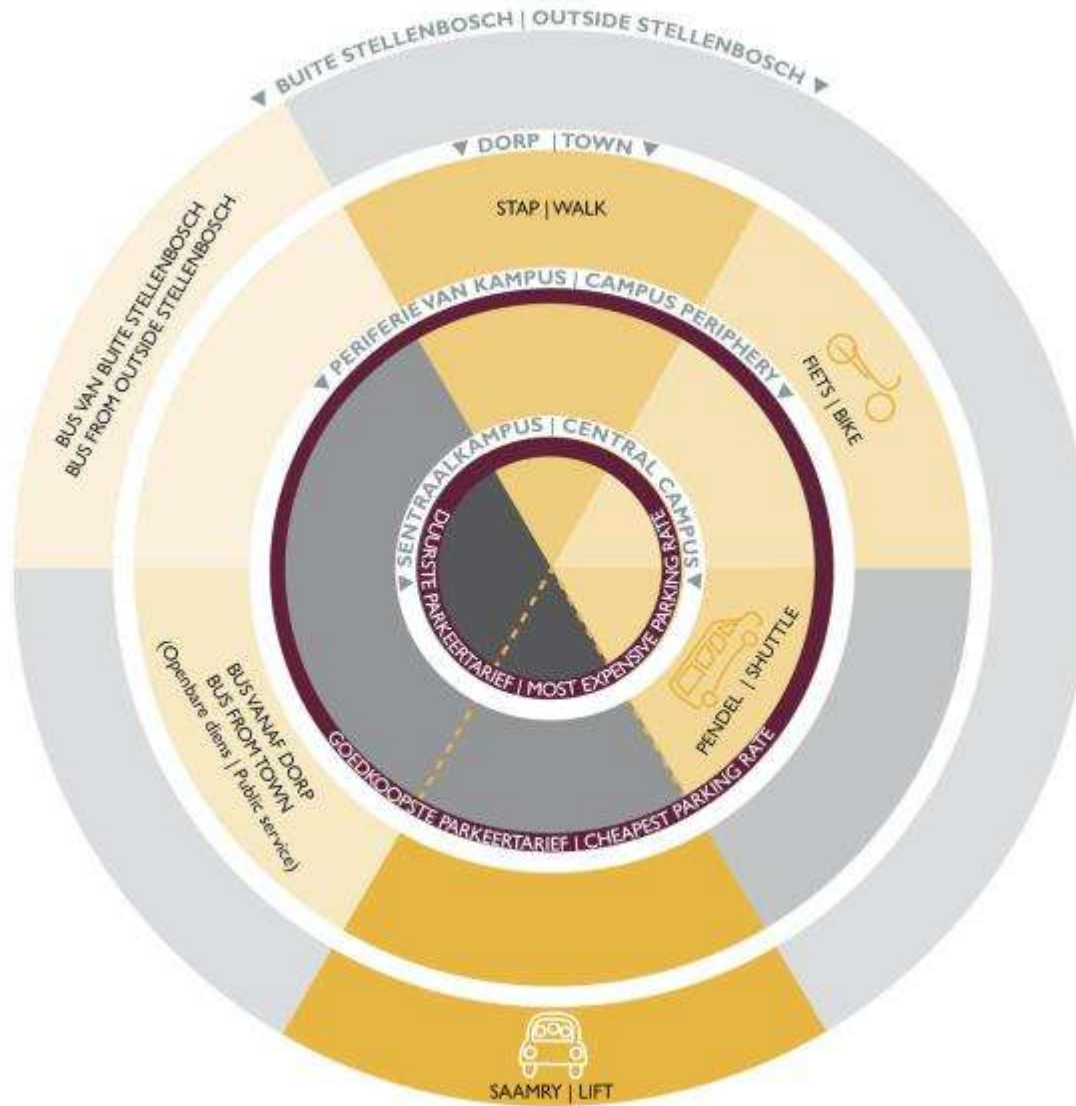




# PUBLIC TRANSPORT (Long distance)

**MATIE**

MOBILITEIT  
MOBILITY





# STAP / WALK



MATIE-fiets te huur vanaf 15 Maart 2012

R400 per jaar – e-pos [llang@sun.ac.za](mailto:llang@sun.ac.za) om op waglys te kom

- *R1 000 deposit*
- *R600 back if bike is returned in good condition*



## Veilige fietsloodse

- Reeds een tussen Neelsie en Peroldgebou

## *Special cycling lanes*

- *First lane in Victoria Street*







*Pilot project underway*

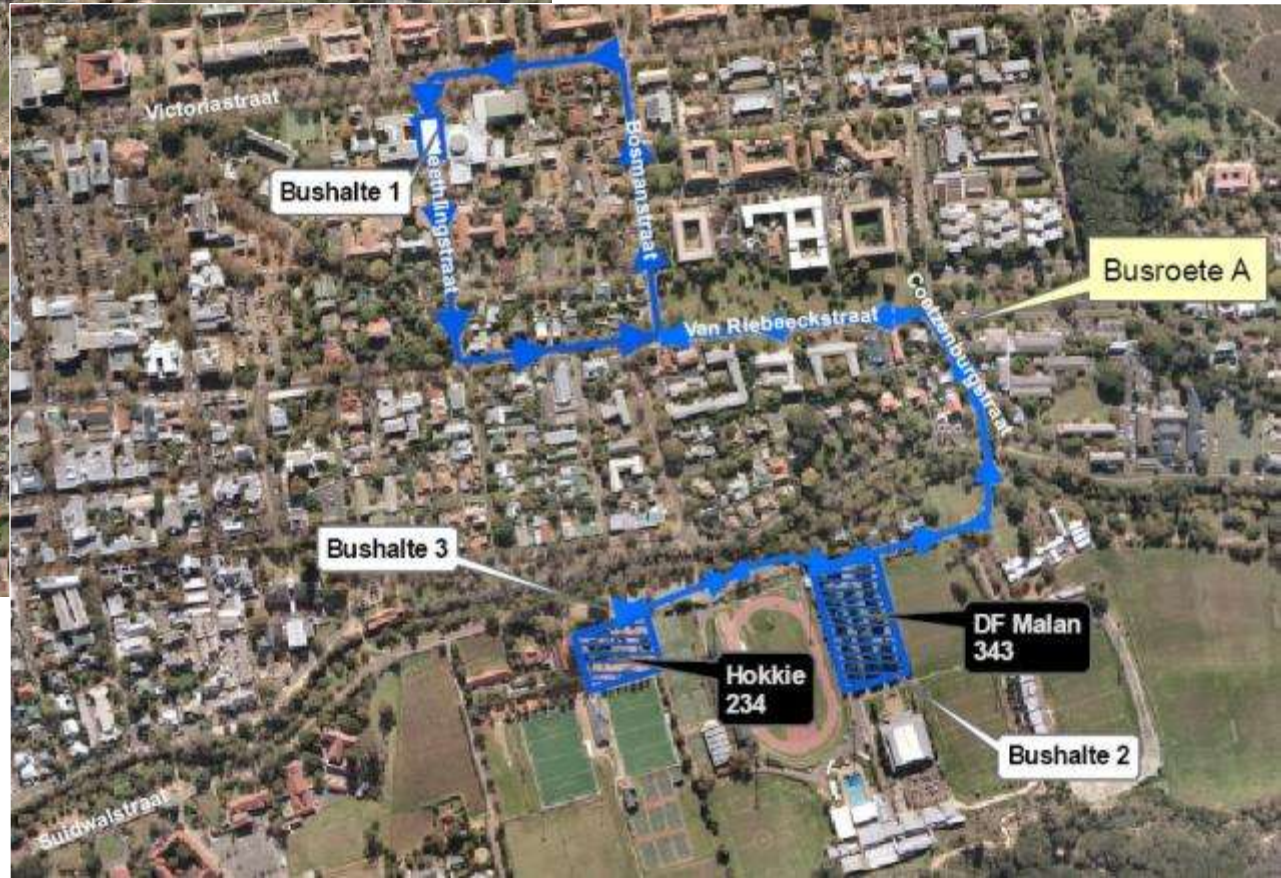
Two routes:

- Konservatorium – Coetzenburg
- Joubertstraat – Lentelus





# LOODSPROJEK-PENDELROETES





- *Class days 07:30–17:00*
- Tans gratis met US-kaart
- *Once fully implemented:*
  - *Everyone pays R45 this year*





Reeds gewild

*Problem: hard to arrange ad hoc lift*

Oplossing: saamry-webblad



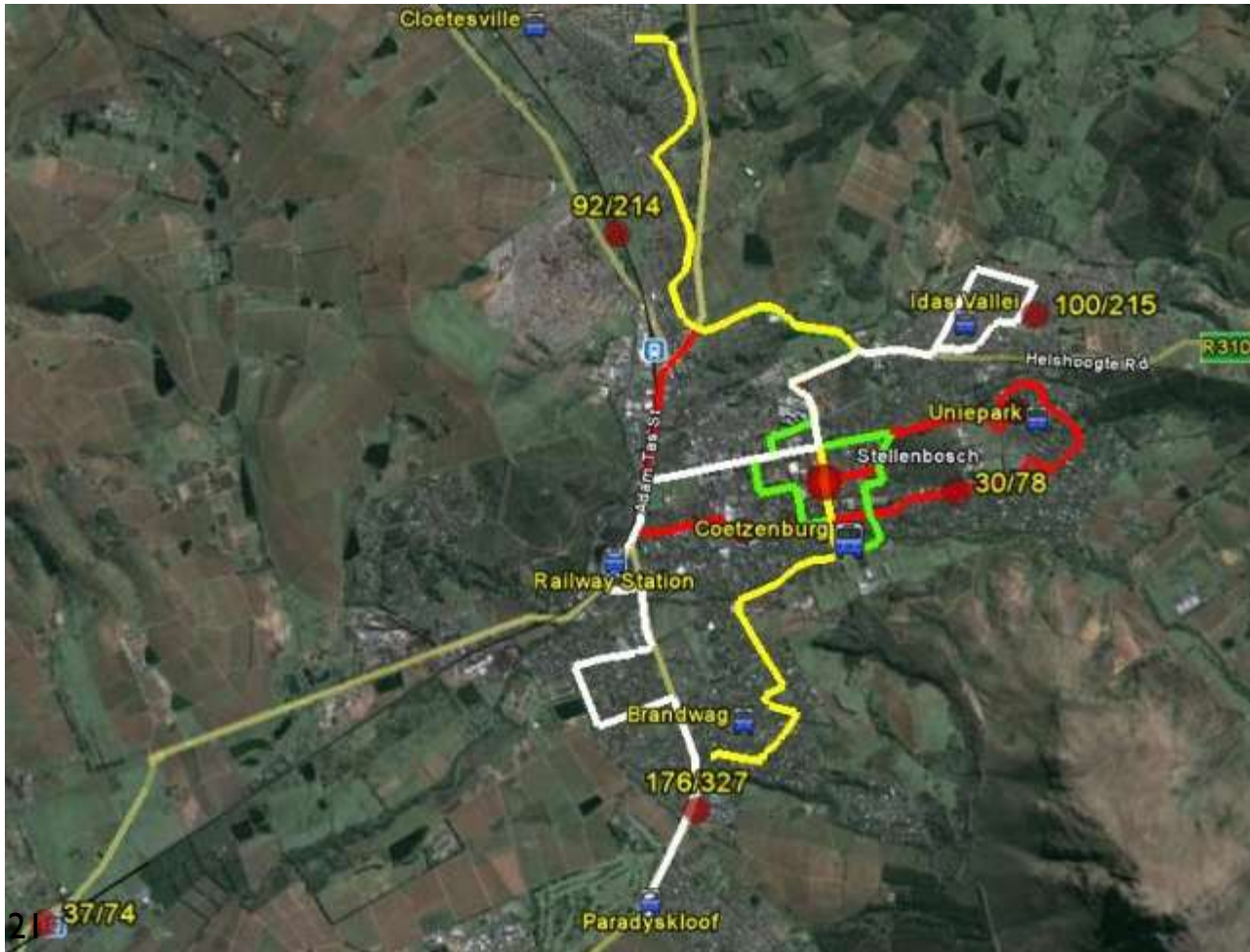


# OPENBARE VERVOER: Stellenbosch



Soggens van woonbuurte af na sentrale punt

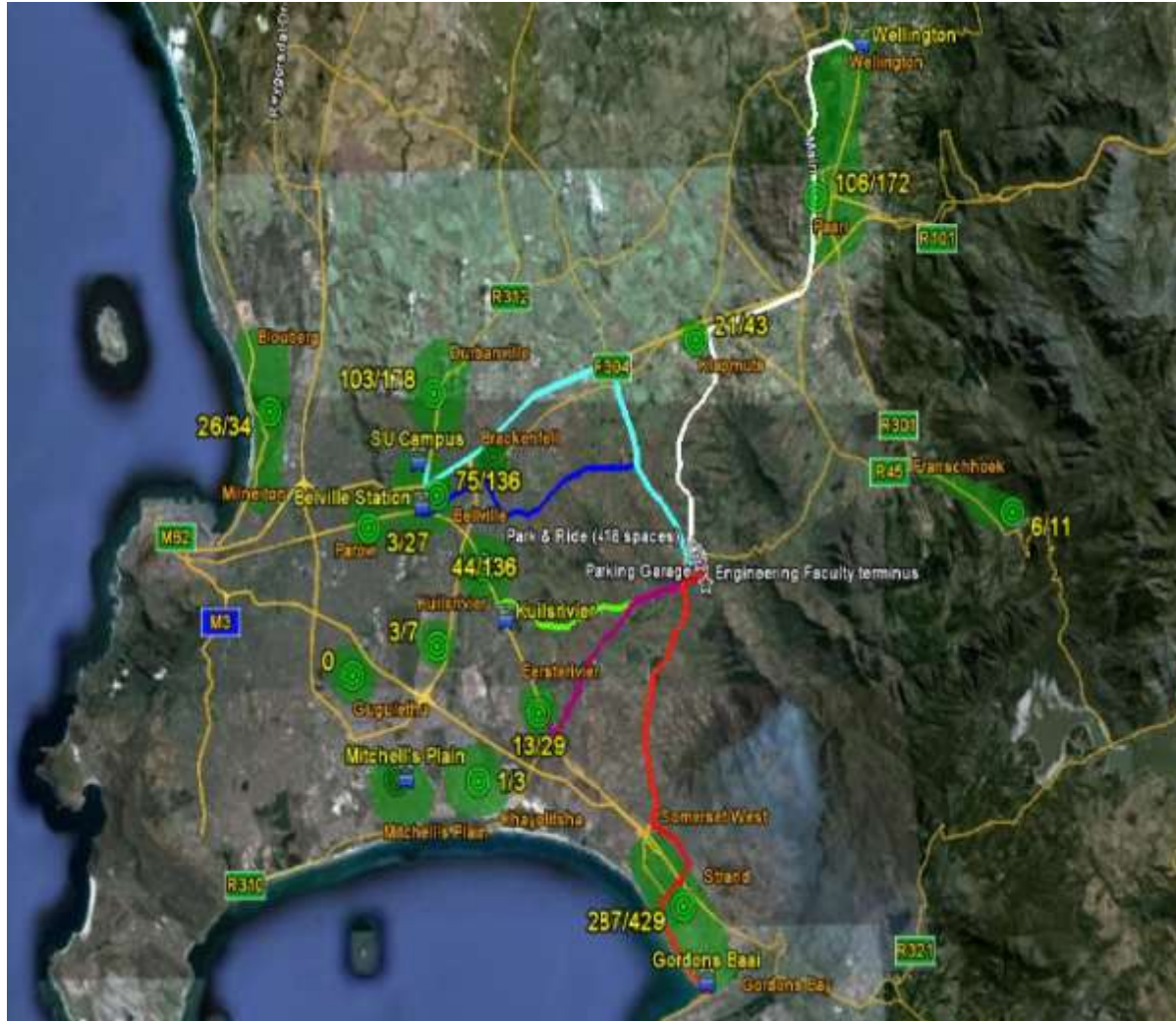
Smiddae van sentrale punt af na woonbuurte



*Possible  
routes*



# PUBLIC TRANSPORT: Long distance routes



Huidige &  
moontlike  
roetes



- Stap, fietsry, pendel & openbare vervoer verlig druk
- *Stricter policing*
- Gebruiker betaal
- *Full-cost calculation*





## 2012

R528 per jaar, soos volg:

Personeel betaal:

- R44 per maand

*Students pay:*

- *R264 per semester*







## 2013 <

- Sone bepaal tarief
- *Cheapest: Periphery*
- *Most expensive: Core*







**15 Maart 2012 – *Watch this space ...***

Volhoubaarheid  
Sustainability 





# GaanGroen vir 'n GroenGenerasie *GoGreen for a GreenGeneration*





## **DANKIE / THANK YOU**

**Voorlegging beskikbaar by:**

[www.sun.ac.za/university/Management/rektor/toesprake.html](http://www.sun.ac.za/university/Management/rektor/toesprake.html)

***Presentation available at:***

[www.sun.ac.za/university/Management/rektor/speeches.html](http://www.sun.ac.za/university/Management/rektor/speeches.html)

**Volhoubaarheidswebblad / Sustainability website:**

[www.sun.ac.za/volhoubaarheid](http://www.sun.ac.za/volhoubaarheid) or [www.sun.ac.za/sustainability](http://www.sun.ac.za/sustainability)

**VRAE/OPMERKINGS / QUESTIONS/REMARKS**

***groen\_green@sun.ac.za***