



SAAM VORENTOE | MASIYE PHAMBILI | FORWARD TOGETHER

# Guide for **NEWCOMERS**

[www.sun.ac.za/welcome](http://www.sun.ac.za/welcome)



UNIVERSITEIT  
iYUNIVESITHI  
STELLENBOSCH  
UNIVERSITY

**100**  
1918 · 2018

# 2021

## HAVE YOU SAVED THEM ON YOUR CELL PHONE?

### EMERGENCY NUMBERS FOR STUDENTS ON STELLENBOSCH CAMPUS

|                                                                                   |                                     |
|-----------------------------------------------------------------------------------|-------------------------------------|
| CSCD 24-Hour Crisis Service                                                       | 010 205 3032 /<br>082 557 0880      |
| Student Communities                                                               | 021 808 2848                        |
| <b>Risk Management and Campus Security:</b>                                       |                                     |
| • Ops Room for general enquiries and the reporting of risks                       | 021 808 4666                        |
| • <b>24-hour Emergency Line</b> for the reporting of serious incidents and danger | 021 808 2333                        |
| The Ombudsman                                                                     | 082 807 2994                        |
| Police Flying Squad                                                               | 10111                               |
| Ambulance                                                                         | 084 124 (ER24)<br>082 911 (Netcare) |
| Medi-Clinic 24-hour emergency unit                                                | 021 861 2000                        |

### IMPORTANT NUMBERS: STELLENBOSCH CAMPUS

|                                                                                |                   |
|--------------------------------------------------------------------------------|-------------------|
| General Enquiries / Client Services                                            | 021 808 9111      |
| Academic Affairs Council (AAC)                                                 | 021 808 2493/2491 |
| Admissions                                                                     | 021 808 9111      |
| Bursaries and Loans                                                            | 021 808 9111      |
| Campus Health Services                                                         | 021 808 3494/3496 |
| Cape Institute for Agricultural Training: Elsenburg                            | 021 808 5453      |
| Centre for Student Communities (CSC)                                           | 021 808 2848      |
| Centre for Student Counselling and Development (CSCD)                          | 021 808 4707      |
| Centre for Student Leadership, Experiential Education and Citizenship (CSLEEC) | 021 808 2312      |
| Centre for Student Recruitment and Career Advice (CSRC)                        | 021 808 4709      |
| Connect office                                                                 | 021 808 3632      |
| Corporate Communication                                                        | 021 808 4977      |
| Facilities Management                                                          | 021 808 4666      |
| Language Centre                                                                | 021 808 2167      |
| Library Enquiries                                                              | 021 808 4380      |
| Maties Sport                                                                   | 021 808 4642      |
| Ombudsman                                                                      | 082 807 2994      |
| Prim Committee                                                                 | 021 808 2493/2491 |
| Risk Management and Campus Security                                            | 021 808 4666      |
| Social worker                                                                  | 021 808 4994      |
| Societies Council                                                              | 021 808 2493/2491 |
| Student Affairs                                                                | 021 808 4585      |
| Student Fees                                                                   | 021 808 4521      |
| Stellenbosch Student Representative Council (SRC)                              | 021 808 2493/2491 |
| SU Gymnasium                                                                   | 021 808 9133      |

### EMERGENCY NUMBERS FOR STUDENTS ON TYGERBERG CAMPUS

|                                       |              |
|---------------------------------------|--------------|
| Maties ER24 (ambulance or counsellor) | 010 205 3032 |
| Student Affairs                       | 021 938 9461 |
| Risk Management and Campus Security   | 021 938 9507 |
| The Ombudsman                         | 082 807 2994 |
| Police Flying Squad                   | 10111        |
| Poison Information Centre             | 086 155 5777 |
| Tygerberg Hospital                    | 021 938 4911 |

### IMPORTANT NUMBERS: TYGERBERG CAMPUS

|                                                       |                   |
|-------------------------------------------------------|-------------------|
| All Enquiries                                         | 021 938 9111      |
| Academic Affairs Council (TAAC)                       | 021 938 9591      |
| Admissions                                            | 021 938 9580      |
| Bursaries and Loans                                   | 021 938 9458/9129 |
| Campus Health Services                                | 021 938 9590      |
| Centre for Student Counselling and Development (CSCD) | 021 938 9590      |
| Deputy Registrar                                      | 021 938 9379      |
| Library Enquiries                                     | 021 938 9368      |
| Marketing Office                                      | 021 938 9202      |
| Maties Sport                                          | 021 938 9468      |
| Ombudsman                                             | 082 807 2994      |
| Prim Committee                                        | 021 938 9591      |
| Risk Management and Campus Security                   | 021 938 9507      |
| Student Affairs                                       | 021 938 9461      |
| Student Council                                       | 021 938 9591      |
| Student Recruitment and Support Office                | 021 938 9789      |
| Tygerberg Gymnasium                                   | 021 932 2888      |
| Tygerberg Hospital                                    | 021 938 4911      |



# CONTENTS

|                                                                                             |          |
|---------------------------------------------------------------------------------------------|----------|
| <b>WELCOME, NEW MATIES!</b>                                                                 | <b>2</b> |
| Welcome                                                                                     | 3        |
| What is a Cluster?                                                                          | 4        |
| Private Student Organisations                                                               | 5        |
| PSO Transport Service during welcoming                                                      | 5        |
| Centre for Student Leadership, Experiential Education & Citizenship                         | 6        |
| COVID-19                                                                                    | 7        |
| Meet the SRC 2020/2021                                                                      | 8        |
| Tygerberg Student Representative council (TSR)                                              | 9        |
| Tygerberg Academic Affairs Council (TAAC)                                                   | 10       |
| Military Academy Student Council (MASC)                                                     | 10       |
| Centre for Student Counselling and Development                                              | 11       |
| Campus Health Service                                                                       | 13       |
| Languages of tuition at Stellenbosch University                                             | 14       |
| Your journey to academic success starts here                                                | 15       |
| Stellenbosch University's Values, Human Rights and Disciplinary code                        | 16       |
| Important notice regarding social media                                                     | 17       |
| Insurance: Students and their property                                                      | 17       |
| Free writing advice                                                                         | 17       |
| Stellenbosch University's Co-curricular Support Fund (SUCSF)                                | 18       |
| Welcoming Champions                                                                         | 18       |
| Societies Council Executive Committee                                                       | 18       |
| Pre-registration clearance ( <i>verification</i> ) of international degree-seeking students | 19       |
| Library                                                                                     | 19       |
| Maties Sport                                                                                | 20       |
| Maties Gimnasium                                                                            | 21       |
| Computer User Areas (CUAs)                                                                  | 22       |
| CUA – Information                                                                           | 23       |
| Take your safety seriously                                                                  | 23       |
| Two options to register as a student                                                        | 25       |
| Extended Degree Programmes (EDPs)                                                           | 27       |
| Online Onboarding Programme                                                                 | 27       |
| Tygerberg Campus Map                                                                        | 29 (A)   |
| Stellenbosch Campus Map                                                                     | 30 (A)   |
| Stellenbosch Campus Map Index                                                               | 31 (A)   |



@stellenboschuni @sustudentaffairs

Published by the Corporate Communication and Marketing Division, in conjunction with the Division Student Affairs, Stellenbosch University

Editor: JC Landman

Content Editor: Audrey Poole

Design: Edward Mitchell

Printing: African Sunmedia

## WELCOME, NEW MATIES!

### Dear newcomer student

Welcome to Stellenbosch University (SU).  
What an exciting journey awaits!

The past year has been exceptionally challenging for all of us, particularly for young people such as yourself who have had to wrap up their schooling and prepare for the next chapter: university. Congratulations on working hard and persevering. You have passed your final exams and have been admitted to SU – a tremendous accomplishment during a global pandemic. Take a moment to look back on how far you have come, and appreciate where you are today.

Last year was tough, and we will no doubt continue to face difficulties this year with the ongoing effects of COVID-19 on our university community, our country and the rest of the world. While we look forward to our campuses coming alive again as students and staff return, we will be complying with all prescribed measures. We will also be asking you to agree to a code of conduct, which includes avoiding risky off-campus activities. We each have to accept responsibility to prevent the further spread of the coronavirus.

At SU, our overarching priorities for 2021 remain the same as last year: to succeed with the academic project, and to remain sustainable as a leading higher education institution. These we will pursue while also prioritising the health and safety of our students and staff. Remember, getting through COVID-19 is not a sprint; it's a marathon. And now we know it isn't just any old marathon, but an ultramarathon! These are difficult times, and we need to work on our fitness and stay in shape to cross the finish line.

I hope you have already familiarised yourself with the exciting Onboarding Programme that has been rolled out online. This special programme introduces you to SU and helps you orientate yourself and prepare for your studies and the unique student experience awaiting you on campus. That experience will start with our signature annual Welcoming Programme.

Some components of the Welcoming Programme will be conducted online to avoid large gatherings, but certain elements, which can be carried out within the confines of the COVID-19 regulations, will continue in person. We will do everything possible to make your introduction to campus life special and memorable, as we always do. Keep an eye on [www.sun.ac.za/welcome](http://www.sun.ac.za/welcome) for the latest developments and schedule.

From now, you will have access to various support services at our Division of Student Affairs. Here, highly experienced professionals stand ready to support your learning and development, guiding you every step of the way. Do make use of their services to make the most of your time at university.

We firmly believe you have what it takes to study successfully and graduate. Stay confident, remain focused on your studies and work hard. And don't forget to have fun along the way – many varsity friends become friends for life.

If you need help in the weeks and months ahead, simply reach out and ask. Because at Maties, we move forward together.



**Prof Wim de Villiers**  
Rector and Vice-Chancellor



**SCAN HERE**

## THE WELCOMING PERIOD AT SU: YOUR KEY TO SUCCESS



### Congratulations on your admission to Stellenbosch University!

We know you are not only coming here to get a degree, but also an education to enjoy this exciting period in your life to the full, and we are looking forward to receiving you on campus. Please read through this letter to get an idea of what to expect at Stellenbosch when you arrive on campus.

### Why have a welcoming programme or orientation week?

The welcoming programme introduces you to your residence, private student organisation (PSO), cluster and faculty so that you can find your feet in your new environment quickly. During the introduction to your residence PSO ward you will meet the communities that you can join. Even though you will meet many newcomer students in your residence or PSO ward during the welcoming period, your cluster in particular will open up new worlds and expose you to even more newcomer students who might share the same values and interests as you.

You will visit the faculties together (or online), so by the time you attend your first class there should be a few familiar faces already. The introduction to your faculty will equip you for the start of your academic career. By following your faculty's programme carefully you will ensure that you are ready for your first day of class.

Therefore, use the exciting welcoming period as an opportunity to think critically about your environment, fellow students and leaders.

EMBRACE EVERY OPPORTUNITY TO CREATE MEMORIES WITH NEW AND OLD FRIENDS AND TO LEARN NEW SKILLS, EVEN OUTSIDE THE LECTURE HALLS.



### Be the first to ask questions such as:

- Do the activities in the welcoming programme contribute to your development and preparation for the academic year ahead?
- Does the welcoming period expose you to a positive environment and positive relationships?
- Does the welcoming period offer you a chance to fully live out your values and interests?
- And particularly: Does the welcoming period help you to become the person you have always wanted to be?

### What makes university life so unique?

Now that you know what to expect of the welcoming, you also need to know what not to expect: a repetition of your school experience. University is a whole new ball game. University gives you an opportunity to expand your world and to discover and exploit countless possibilities. Whether you have just completed grade 12, or already have a gap year behind you, you can rest assured that your university experience will be incomparable with anything else. University is not only there to ensure that you grow academically, but also gives you a chance to explore other facets of your life. Here you will have the freedom to choose your friends and role-models, and to try out activities that you may not have encountered before.

Who knows, this might just be the beginning of an unforgettable journey of discovery! As long as you are prepared to work hard to make your dreams come true, you have the potential to be anything you want to be. Here you will have an opportunity to find your own voice so that you can participate in critical conversations on campus.

By now you have probably heard a lot about what you can expect from your first few days at university, but this is an opportunity for you to form your own ideas about the welcoming period. Remember, you do not have to accept everything passively; rather think critically about your experience of the welcoming programme.

### How can you make it unique for yourself?

At Stellenbosch we believe that students are our knowledge partners. Your success at university therefore lies in your hands. Success at university does not, however, only mean successful completion of your studies, but also that you have grown and developed as a human being.

### You have the opportunity to address the following critical questions to yourself and to your fellow students:

- What is important to you?
- Which aspects of yourself are you most keen to develop?
- Besides a degree, what else would you eventually like to leave with?
- What contribution would you like to make in your community?

### You do not have to wait until 'one day'; start making a difference today!

Embrace every opportunity to create memories with new and old friends and to learn new skills, even outside the lecture halls. Explore the world around you, but do not lose sight of the bigger picture. University is not only there for getting a degree or enjoying being young, but is also a chance to test your boundaries in a responsible manner and to broaden your horizons.

We hope you are looking forward to your time at Stellenbosch University, because we are very excited about joining you on this journey.

SCAN HERE



## WHAT IS A CLUSTER?

Newcomer students join a campus that has been organised into listening, learning and living communities (LLL). All the clusters, residences, Private Student Organisations (PSOs), mentor groups, tutor groups and the listening, learning and living houses for senior students form part of LLL. The purpose of LLL is to integrate the out-of-class experience with the in-class experience to ensure academic success and a well-rounded education for students.

## CLUSTERS

A cluster is made up of a number of residences and one or two PSO communities. Clusters play a significant role in the integration and support of new students on campus and ensure that students experience the University as a caring and nurturing place. They also integrate the university experience of residence students and students in private accommodation. Clusters are increasingly used as a way of organising the University, for example, faculties tend to use clusters as a basis on which to form subject tutor groups. The residences and PSOs belong to one of six clusters on the Stellenbosch campus, or the one on Tygerberg campus. The Senior Living Space forms the eighth cluster.

## MENTORS

Mentors are senior students who are appointed in residences and PSOs to assist new students with their adjustment to university life. Each new student should have access to a mentor. The mentor already plays an important role during the welcoming period with general assistance regarding university life queries and psychosocial support. Through the mentor, the new students have the opportunity to partake in the wellness programme of the University, which aims to enhance the wellness of students throughout the year. When you arrive at your residence or PSO, a mentor should be allocated to you. Should you not be allocated a mentor, or have any queries, please contact Client Services at tel 021 808 9111 or [info@sun.ac.za](mailto:info@sun.ac.za).



SCAN HERE

## COMPOSITION OF CLUSTERS



SCAN HERE

### amaMaties

Capri, Equité, Erica, Helderberg, Huis Neethling, Nemesia and Serruria



### Rubix

Heemstede, Metanoia, Nerina, Pieke and Venustia



### Tygerberg

Francie van Zijl, Hippokrates, Meerhoff, Nkosi Johnson, Osler, Ubuntu and eNkanyini



### Validus

Goldfields, Huis Visser, Huis Marais, Simonsberg, ISA, Olympus and Academia



### VicMeyr

Aurora, Dagbreek, Huis ten Bosch, Lydia, Majuba and Minerva



### Victoria

Monica, Harmonie, Oude Molen, Wilgenhof and Silene



### Wimbledon

Aristea, Eendrag, Helshoogte, Irene, Sonop and Vesta



### Senior Living Spaces

Botmashoogte, Concordia, Huis de Villiers, Huis Macdonald, Lobelia, Huis Russel Botman and The Village



## PRIVATE STUDENT ORGANISATION

One of Stellenbosch University's key focus areas for student development is the co-curricular and the out-of-class experience. The Private Student Organisations (PSOs) have been positioned in order to fulfil this need and to give students the opportunity to have a wholesome and diverse University experience. All students who do not make use of the university's residence accommodation are automatically members of a PSO – approximately 70% of the University's students. These students are divided in different PSOs which provide them with all the opportunities for successful social and academic integration on campus.

The PSO community does not provide accommodation for members, but amongst others PSO students can use their student cards to book and enjoy meals at an open residence dining hall in their particular cluster. The PSO assigns a mentor to each new student who can assist them with all these processes.

There are ten PSOs on Stellenbosch campus and one on Tygerberg campus. New students are divided into a PSO in accordance with the University's placement policy. Students are notified about their PSO allocation via email and will also receive information regarding their

PSO's welcoming programme as well as their meeting points during welcoming. The PSOs are jointly managed by the PSO Office which is situated within the Centre for Student Communities in the Division Student Affairs. Students are not permitted to change PSOs and as such their allocation remains for the duration of their University journey.

The PSO to which a student has been allocated also determines the cluster to which that student belongs to. Should you not receive any notification of your PSO allocation, please contact Client Services on tel 021 808 9111 or [info@sun.ac.za](mailto:info@sun.ac.za). Students are also encouraged to familiarise themselves with the compulsory PSO fees as depicted annually in the Stellenbosch University Student Fees Booklet.

### STELLENBOSCH PSOS

Aristea, Aurora, Capri, Equité, Olympus, Oude Molen, Pieke, Silene, Venustia and Vesta

### TYGERBERG PSO

Osler

## PSO TRANSPORT SERVICE DURING WELCOMING

Students who are allocated to Private Student Organisations (PSOs) are encouraged to take part in the welcoming programme of their specific PSO. As the programmes end in the evening, a free transport service is available to all PSO students to ensure they get home safely. The transport service leaves at exactly 18:30 and 20:30 from the PSO Hub, 11 Bosman Street, Stellenbosch and will get students safely to their homes in Stellenbosch and specifically indicated drop-off points in surrounding areas.\*

The drop-off points where students will be taken to, are the following:

- SAPS Offices: Bellville, Kuils River, Athlone, Mitchells Plain, Paarl, Somerset-West and Kayamandi
- De Zalze Golf Estate, Stellenbosch (gate)
- Paradyskloof, Stellenbosch (Engen garage)
- Sonnebloem Rd, Idasvallei, Stellenbosch (Brent Oil garage)
- Welgevonden Estate, Stellenbosch (gate)
- 87 Lang Street, Cloeteville, Stellenbosch (Engen garage)
- Stellenbosch central area, Stellenbosch

\* This information is subject to change, due to COVID-19 regulations.

This service is only available during the welcoming period (2-12 March 2021). Students must please log a request for the shuttle service by 11:00 on the required day, indicate the specific drop-off point. Please let your respective House Committee or the PSO office at [psos@sun.ac.za](mailto:psos@sun.ac.za) know.



SCAN HERE



## CENTRE FOR STUDENT LEADERSHIP, EXPERIENTIAL EDUCATION & CITIZENSHIP



The aim of the Centre for Student Leadership, Experiential Education & Citizenship (CSLEEC) is to ensure that Stellenbosch University (SU) provides comprehensive and coherent leadership experiences for its students by the development of graduate attributes. The CSLEEC comprises of the:

### SU CO-CURRICULUM OFFICE

The Co-curriculum Office offers a purposive, experiential education that amplifies knowledge acquisition, develops critical life skills and competencies; builds values and interests; fosters community formation, intentionally creating pathways for whole-student development towards African-centered, global citizenship. By participating in formally recognised co-curriculum programmes students are now able to receive recognition for learning on their academic transcript.

### FVZS INSTITUTE FOR STUDENT LEADERSHIP & DEVELOPMENT (FVZS)

The FVZS honours the legacy of a great South African leader, the late Dr Frederik van Zyl Slabbert who was known for his significant contribution to the democracy of South Africa. The FVZS supports the SU vision of a university that graduates young people who are active and engaged global citizens able to contribute to the health and prosperity of our global society. For more information join our active social media platforms on Facebook (fvzsladershipinstitute), Instagram (@fvzsinstitute) or via email at fvzs@sun.ac.za.

### ONLINE PROGRAMMES

Do you want to engage in co-curricular activities but struggling to find time in your academic schedule? The CSLEEC: Online portfolio offers online short courses that can accommodate your schedule.

### STUDENT GOVERNANCE

Student Governance seeks to promote ethical governance ethos to the SU student leadership community. The following Student Governance structures are supported:

- **The Students' Representative Council (SRC)** is the highest student representative and decision-making body and envisions a progressive and thriving community with student success at its core. It ensures that all students are well informed and supported throughout the welcoming programme, leading up to the first academic day and assists students who are academically excluded and those who are awaiting appeal notification during January. Students are welcome to visit the SRC office for any support during this time to ensure that student success and wellbeing are promoted. The SRC support all students who are unable to either pay the initial residence fee or who have historical debt and cannot afford to register for the academic year. The SRC supports students who have not been placed in residences and are struggling to find accommodation with temporary accommodation during the welcoming period.
- **Societies Council** is a student-driven organisation representing all registered and new societies at the Stellenbosch campus. The Societies Council provide numerous opportunities for students to engage with the different aspects of their personal development such as leadership experience, teamwork, or to further their own interests, like research and community development.
- **Academic Affairs Council (AAC)** primary responsibility is to represent and protect your academic affairs and development as a student. This includes academic complaints, Language Policy grievances, HEMIS, test or timetable clashes, plagiarism issues, problems with lecturers, mentors, tutors or tut classes and co-curricular development. If you have any problems affecting your academics, we are the ones you want to talk to. Contact us or visit our social media pages for more information on Facebook (Stellenbosch University AAC), Instagram (@abrstellies), or send an email to the chairperson, Jarryd Luyt, at luyt@sun.ac.za.



## COVID-19

- **Prim Committee (PC)** is an SRC ex-officio student body that serves as a central body for all house committees and is composed of the Primarii of the 42 student communities on campus; which includes residences and Private Student Organisations (PSOs). The PC functions as a leadership collaboration committee whereby the Prims from the various communities discuss events and topics relevant to the houses and campus. You are represented on the PC through the Prim in your student community, so make sure that you take any questions, issues, and concerns that you may have to the leadership within the residence or PSO you are a part of. If there is anything that your community leadership cannot solve you are welcome to contact the PC chair, Leoné Wilkinson at wilkinson@sun.ac.za, or PC Vice-Chair, Joshua Eva at dawg@sun.ac.za or Senior PC Chair, Masixole Ndamandama at masixolen@sun.ac.za.
- **Military Student Council (Saldanha campus)** is an SRC ex-officio body consisting of students elected from different year groups by the student body. This Council is elected to create an environment that is conducive and best supports the students to succeed in their academics as well as the development of professional military standards.
- **Student Court** is a judiciary student body that is responsible for the resolution of student disputes, intersociety disputes and SRC constitutional matters.
- **Student Parliament** is an oversight student body that seeks to strengthen constitutional democracy within student leadership by actively promoting accountability, transparency and consultative governance within the SU student community.
- **Senior Prim Committee** is an SRC ex-officio student body that serves as a central body for senior residences.
- **Election Convenor** is an independent student body enshrined in the Student Constitution, the body exists to facilitate and conduct free and fair elections.
- **Die Matie** is an independent student newspaper and is published every two weeks during the academic year. The editorial content includes sections on news, student life, sport, current affairs, arts and entertainment.

The following Student Governance structures are supported at **Tygerberg Campus**:

- **TSR** is the highest form of representation and governance for the student body at the Faculty of Medicine and Health Sciences. The members of this team tackle every aspect of student life unique to this *healthcare mecca* and makes it their mission to ensure the well-being of students through portfolio-based management.
- **Tygerberg Societies Council (TSC)** is a student-driven organisation representing all registered societies.
- **Tygerberg Academic Affairs Council (TAAC)** is a statutory student body facilitating a mutually respectful communication channel between students (via class representatives) and the Faculty regarding academic matters.

**ADDRESS:** 9 Bosman Street, Stellenbosch  
**EMAIL:** clsleec@sun.ac.za  
**TEL:** 021 808 9798  
**WEBSITE:** www.sun.ac.za/csleec



Stellenbosch University (SU) is closely monitoring developments surrounding the coronavirus disease outbreak (COVID-19, caused by the novel coronavirus SARS-CoV-2) that was declared a global pandemic by the World Health Organisation.

Our COVID-19 Contingency Committee, established in February 2020, has been expanded to an overarching Institutional Committee for Business Continuity (ICBC). It is served by a Medical Advisory Committee, and seven workstreams, covering student services; staff; learning and teaching; communications, community impact and external relations; campus operations; finance and legal matters; as well as research.

We are doing everything we possibly can to ensure that our students can complete their academic year, and that the University remains sustainable.

Stay informed of the latest developments communicated via our official channels and visit <https://bit.ly/SUcoronavirus>.

SCAN HERE



## MEET THE SRC 2020/2021

The Students' Representative Council (SRC) is the highest representative structure for students at Stellenbosch University, as recognised by the SU Statute and governed by the Stellenbosch Student Constitution. The SRC is democratically elected and all candidates run independently, and do not represent any political parties while serving on the SRC.

SRC Office, 3rd Floor Neelsie Student Centre  
8 De Beer Rd, Stellenbosch  
sr@sun.ac.za | 021 808 2757

|                                                                                                                                                                                                                    |                                                                                                                                                                  |                                                                                                                                                                                                                                                                                        |                                                                                                                                                                                                                      |                                                                                                                                                        |
|--------------------------------------------------------------------------------------------------------------------------------------------------------------------------------------------------------------------|------------------------------------------------------------------------------------------------------------------------------------------------------------------|----------------------------------------------------------------------------------------------------------------------------------------------------------------------------------------------------------------------------------------------------------------------------------------|----------------------------------------------------------------------------------------------------------------------------------------------------------------------------------------------------------------------|--------------------------------------------------------------------------------------------------------------------------------------------------------|
| <p><b>XOLA NJENGELE</b></p> <p>Chairperson<br/><i>Executive Member</i><br/>Committee: Council<br/>xn@sun.ac.za</p>                |                                                                                 | <p><b>KIRA ALBERTS</b></p> <p>Vice-Chairperson<br/><i>Executive Member</i><br/>Committee: Institutional Forum<br/>kca@sun.ac.za</p>                                                                                                                                                    | <p><b>EDUARD ZERHT</b></p> <p>Secretary General &amp; Communications Officer<br/><i>Executive Member</i><br/>zerht@sun.ac.za</p>  |                                                                                                                                                        |
|                                                                                                                                   | <p><b>PHILIP VISAGE</b></p> <p>Treasurer<br/><i>Executive Member</i><br/>Committees: Senate, Quality Committee &amp; Naming Committee<br/>pvvisage@sun.ac.za</p> | <p><b>JARRYD LUYT</b></p> <p>Academic Affairs Council<br/>Chairperson<br/><i>Executive Member</i><br/>Committees: Senate, Quality Committee &amp; Academic Planning Committee<br/>luyt@sun.ac.za</p>  |                                                                                                                                   | <p><b>MAKABONGWE KASEKE</b></p> <p>Student Wellness<br/><i>Executive Member</i><br/>Committees: Bursaries and Loans &amp; Senate<br/>mak@sun.ac.za</p> |
| <p><b>LEONÉ WILKINSON</b></p> <p>Prim Committee<br/>Chairperson<br/>Committee: Senate<br/>wilkinson@sun.ac.za</p>                |                                                                                | <p><b>JOSHUA EVA</b></p> <p>Prim Committee Vice-Chairperson<br/>dawg@sun.ac.za</p>                                                                                                                                                                                                     | <p><b>NOMZAMO BUTHELEZI</b></p> <p>Societies Council<br/>Chairperson &amp; Policy Officer<br/>shenge@sun.ac.za</p>               |                                                                                                                                                        |
|                                                                                                                                 | <p><b>KRISTIN ARENDS</b></p> <p>Tygerberg Student Council Chairperson<br/>tsrchair@sun.ac.za</p>                                                                 | <p><b>AVUMILE FINIZA</b></p> <p>Military Academy Student Council Chairperson<br/>avumile@sun.ac.za</p>                                                                                              |                                                                                                                                 | <p><b>AYESHA ABOU-ZEID</b></p> <p>Women and Queer Empowerment (WAQE)<br/>Committee: Council<br/>ayeshaabouzeid@sun.ac.za</p>                           |
| <p><b>UNATHI NGUMBELA</b></p> <p>Social Impact<br/>Committees: Social Impact, MGD &amp; Student Fees<br/>unathin@sun.ac.za</p>  |                                                                               | <p><b>VIWE KOBOKANA</b></p> <p>Transformation Officer<br/>Committee: Institutional Forum<br/>viwek@sun.ac.za</p>                                                                                                                                                                       | <p><b>GINA SIBANDA</b></p> <p>Student Financial Access<br/>Committee: Bursaries and Loans<br/>gina23@sun.ac.za</p>              |                                                                                                                                                        |
|                                                                                                                                 | <p><b>MASIXOLE NDAMANDAMA</b></p> <p>Senior Prim Committee Chair<br/>masixolen@sun.ac.za</p>                                                                     | <p><b>THIMNA SOTYATO</b></p> <p>Safety &amp; Security<br/>studentsafety@sun.ac.za</p>                                                                                                               |                                                                                                                                 | <p><b>SARAH KAYEMBE</b></p> <p>SU International<br/>srosul@sun.ac.za</p>                                                                               |
| <p><b>REWALDO CAROLUS</b></p> <p>Culture (KUKO)<br/>srculture@sun.ac.za</p>                                                     |                                                                               | <p><b>PRECIOUS NHAMO</b></p> <p>Sustainability<br/>sustainability@sun.ac.za</p>                                                                                                                                                                                                        | <p><b>KHWEZI NDLOVU</b></p> <p>Sport<br/>srcsport@sun.ac.za</p>                                                                 |                                                                                                                                                        |
|                                                                                                                                 | <p><b>ALMÉ ENGELBRECHT</b></p> <p>Branding &amp; Marketing<br/>srcbranding@sun.ac.za</p>                                                                         | <p><b>LUIGIA NICHOLAS</b></p> <p>Special Needs<br/>specialneeds@sun.ac.za</p>                                                                                                                       |                                                                                                                                 | <p><b>HAIKU</b></p> <p>Luigia's Guide Dog<br/>Good Boy</p>                                                                                             |

## TYGERBERG STUDENT REPRESENTATIVE COUNCIL (TSR)



The Tygerberg Student Representative Council is the highest policy-making and representative student body at the Faculty of Medicine and Health Sciences. It is made up of 9 members elected by the student body, the Tygerberg Prim Committee chair, the Tygerberg Academic Affairs Council chair, Tygerberg Postgraduate Student Council chair, Tygerberg Societies Council chair and 5 portfolio managers. The TSR chair represents the Tygerberg students as a member on the student representative council (SRC).

The functions of the TSR include representing the Tygerberg students in the university management structures, facilitating initiatives or projects that benefit the students and always acting in the best interests of the students.

Should you have any queries, suggestions or issues that you'd like to bring to our attention, please don't hesitate to contact our TSR chair, Kristin Arends, at [tsrchair@sun.ac.za](mailto:tsrchair@sun.ac.za). You can also make use of our social media platforms which are Instagram @maties\_tsr and Facebook on the Tygerberg Student Council-TSR page.

### GENERAL COUNCIL



**Kristin Arends**  
Chairperson  
[tsrchair@sun.ac.za](mailto:tsrchair@sun.ac.za)



**Tshiamo Ngcobo**  
Vice Chair  
[tsrvice@sun.ac.za](mailto:tsrvice@sun.ac.za)



**Puleng Mokoena**  
Secretary  
[20962797@sun.ac.za](mailto:20962797@sun.ac.za)



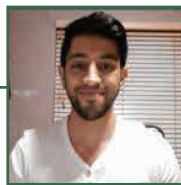
**Nikita Heneke**  
Financial Manager  
[20843690@sun.ac.za](mailto:20843690@sun.ac.za)



**Vhudi Ravhutsi**  
Policy unit chair, Student  
Community needs  
[21768757@sun.ac.za](mailto:21768757@sun.ac.za)



**Dharshana Moodliar**  
Green and Sustainability  
[20741456@sun.ac.za](mailto:20741456@sun.ac.za)



**Abdul-Mutakabir Aziz**  
Student Facility Needs  
[20878273@sun.ac.za](mailto:20878273@sun.ac.za)



**Hugh Seton**  
Sport  
[20965877@sun.ac.za](mailto:20965877@sun.ac.za)



**Kamva-Qama Tambekile**  
Strategic communication  
[20856512@sun.ac.za](mailto:20856512@sun.ac.za)

### EX OFFICIO MEMBERS



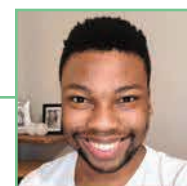
**Jess Davies**  
Tygerberg Academic  
Affairs Council Chair  
[20688016@sun.ac.za](mailto:20688016@sun.ac.za)



**Mbali Mkhonza**  
Tygerberg Postgraduate  
Student Council Chair  
[mbali@sun.ac.za](mailto:mbali@sun.ac.za)



**Lynette Classen**  
Tygerberg Societies  
Council Chair  
[19795858@sun.ac.za](mailto:19795858@sun.ac.za)

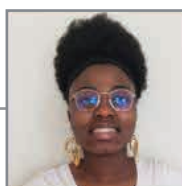


**Luyanda Nzama**  
Tygerberg Prim  
Committee Chair  
[21818762@sun.ac.za](mailto:21818762@sun.ac.za)

### PORTFOLIO MANAGERS



**Sonia Muchiri**  
Kopano and Prestige  
[20788878@sun.ac.za](mailto:20788878@sun.ac.za)



**Queren Kamuanya**  
Student Wellness  
[21770166@sun.ac.za](mailto:21770166@sun.ac.za)



**Realeboga Mothupi**  
Social Justice  
[20303688@sun.ac.za](mailto:20303688@sun.ac.za)



**Vanessa Annan**  
Student Development  
[22721851@sun.ac.za](mailto:22721851@sun.ac.za)



**Amore Arends**  
Culture  
[21078718@sun.ac.za](mailto:21078718@sun.ac.za)

## TYGERBERG ACADEMIC AFFAIRS COUNCIL (TAAC)

The TAAC is a committee on the Tygerberg Campus, made up of elected class representatives from all six Health Sciences degree programmes. The TAAC represents the academic interests of the Tygerberg Student Union in the relevant faculty structures and committees. The committee is made up of an executive committee (Chair, Vice-Chair and Student Programme Coordinators), a committee of class representatives and five ex-officio members. The Chairperson and Vice-Chairperson sit on the Academic Affairs Council (AAC), on Main Campus and the Chairperson sits on the Tygerberg Student Representative's Council (TSR) on the Tygerberg Campus. Your academic interests are represented by your elected class representative, who sits on the TAAC Committee.

If you have any academic-related queries, you are welcome to contact the Chair, **Jessica Davies**, at: [tabrchair@sun.ac.za](mailto:tabrchair@sun.ac.za) or [20688016@sun.ac.za](tel:20688016).



## MILITARY ACADEMY STUDENT COUNCIL (MASC)



**Student Captain**  
2Lt A. Finiza



**Vice Student Captain**  
Esn S. Mbatha



**Policy/Secretary**  
Lt(SAN) K. Kgatitswe



**Faculty**  
Mid R.T. Lesu



**RSM**  
Lt M.R. Mojela



**3rd Year Grp Cdr**  
Lt S. Mbotshelwa



**2nd Year Grp Cdr**  
Lt U.E. Maduwa



**1st Year Grp Cdr**  
SLt J.T. Magongwa



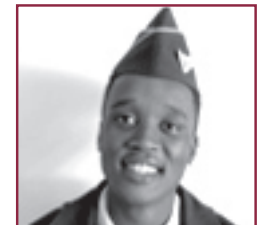
**Finance**  
Lt K. Setsiba



**Sports**  
Lt J.T. Poto



**Social**  
Lt(SAN) T.G. Mohulatsi



**Signal**  
CO K. Gaompe



**Logistics**  
Lt C.L. Cannon



**Transport**  
Mid J.R. Potgieter



**Media**  
Lt C.M. Phathela



**DSSA**  
2Lt T.J. Mbola



**Masiza**  
Lt T.P. Mahomed



**Trans-Enduro**  
Lt D.D. Oss

## CENTRE FOR STUDENT COUNSELLING AND DEVELOPMENT



The Centre for Student Counselling and Development (CSCD) is committed to providing the Stellenbosch University (SU) community with psychological, developmental and support services in our quest to be partners for success. Our vision is to be a centre that is approachable, inclusive and client-centred, with our values based on shared humanity. The staff includes psychologists (clinical, counselling, educational), counsellors, social workers, psychology interns, student assistants, project/portfolio coordinators, a psychometrist, support officers and administrative staff. The CSCD consists of five units that through their core functions endeavour to promote citizenship by facilitating wellness, personal agency and sustainable equity. There are offices on Stellenbosch and Tygerberg campuses.

### STELLENBOSCH

37 Victoria Street, Stellenbosch

**Tel:** 021 808 4707 / 021 808 4994 (office hours)

### TYGERBERG

Second floor, Student Centre, Tygerberg

**Tel:** 021 938 9590 (office hours)

**Website:** [www.sun.ac.za/cscd](http://www.sun.ac.za/cscd)

*24-hour emergency service in collaboration with ER24: 010 205 3032 (after hours and weekends)*

The following Units are housed in five centrally situated buildings in Victoria Street, Stellenbosch:

### EQUALITY UNIT (EQU)

The Equality Unit (EqU), housed in Huis Simon Nkoli House, takes its inspiration from the South African Bill of Rights where no person should be unfairly discriminated. The core function of the Unit is to assist students and staff who have been victimised, sexually harassed, unfairly discriminated, and who have been victims of gender-based violence through a confidential complaint (formal or informal) procedure. The EqU also provides services, training and interventions around HIV/Aids (prevention, testing and counselling) and gender non-violence, and services for the LGBTQIA+ community.

The Unit urges students to come forward if you have experienced forms of unfair discrimination, harassment or victimisation. Empathy, procedural fairness and confidentiality are the cornerstones of our work.

**Email:** [unfair@sun.ac.za](mailto:unfair@sun.ac.za) (to report unfair discrimination or harassment) or [hiv@sun.ac.za](mailto:hiv@sun.ac.za) (for HIV and LGBTQIA+ related matters)

**Tel:** 021 808 3136

**Website:** <http://www.sun.ac.za/english/learning-teaching/student-affairs/cscd/equality-unit>

Facebook, Twitter and Instagram: @EqualityUnitSU

**Address:** Huis Simon Nkoli House, 39 Victoria Street, Stellenbosch

## HAVE YOU BEEN HARASSED OR UNFAIRLY DISCRIMINATED?

If any student has been discriminated or harassed because of race, gender, health, sexual orientation, ethnic and social origin, age, religion, disability, culture, language or belief, there is recourse.

Students can confidentially, informally and/or formally report incidents of unfair discrimination or harassment to one of the Equality Unit's Case Officers. These are the complaint procedure steps:

1. Contact one of the EqU Case Officers via email at [unfair@sun.ac.za](mailto:unfair@sun.ac.za) to report and set-up a meeting.
2. The Case Officer will assist you with completing an assessment form and also refer you to a qualified counsellor who will help you through the difficulty of the incident.
3. After meeting a Case Officer, additional interviews will be conducted with affected parties, witnesses and the respondent/s.
4. Once all the information is gathered, the EqU team will make recommendations to the complainant and respondent.
5. Recommendations can include mediation, referral to the Office of Student Discipline or a department within SU, Human Resources, or the EqU will take the matter to a panel of inquiry for further deliberation.

## UNIT FOR ACADEMIC COUNSELLING AND DEVELOPMENT (UACD)

The Unit renders a development-directed service focusing on the academic challenges students may experience. The team comprises of educational psychologists, a psychometrist, a registered counsellor and intern psychologists. Support is provided to students with regards to study methods, coping with test and examination stress, time management and the optimisation of their potential by means of individual consultations, work sessions and self-help material. Career counselling for registered students are also available. You are welcome to send an email to [studysuccess@sun.ac.za](mailto:studysuccess@sun.ac.za) to make an individual appointment or to enquire about our work sessions.

## UNIT FOR PSYCHOTHERAPEUTIC AND SUPPORT SERVICES (UPSS)

The Unit offers individual, group therapy and work sessions. Confidential and professional services are offered by psychologists and registered counsellors. The Unit offers psychotherapy for a broad spectrum of problems that students experience, namely: depression, high stress levels, adjustment problems, substance abuse, relationship or family problems, etc.

The unit has implemented screening sessions to facilitate students who are experiencing psychological challenges. This service is offered daily from 11:00 – 12:30.

A 24-hour emergency service is also available for registered students from 16:00 – 08:00 as well as weekends (ER24 010 205 3032).

Social Services (Social Worker) in collaboration with the Centre for Student Communities offer a walk-in programme that assist mainly first-year students who live outside of the Western Cape Province and arrive on campus with no confirm accommodation

and provide financial aid advice during the welcoming period. During the academic year, the social worker provides professional services such as support, guidance and counselling to students with respect to their social issues.

To request any services students must send an email to [supportus@sun.ac.za](mailto:supportus@sun.ac.za). They will then be given an appointment. The appointments for all services can take the form of face to face or online.

## DISABILITY UNIT (DU)

The Disability Unit offers a range of services to students with disabilities. We advise prospective students with disabilities about the possible support once at SU. We also discuss appropriate academic support solutions and ensure that academic material is accessible for study, test and exam purposes. The DU also offers students and staff various training opportunities. These include learning basic sign language for staff and students, an accredited Lead with Disability programme for students and facilitating staff training through the Siyakhula training sessions. Come chat to us about further disability-related uncertainties. Contact us at [disability@sun.ac.za](mailto:disability@sun.ac.za). Follow us on the Student Affairs Facebook page as well as Twitter at @suidisabilityupdate. Visit us at 39 Victoria Street, House Simon Nkoli Huis, Stellenbosch

## UNIT FOR GRADUAND CAREER SERVICES (UGCS)

The Unit supports students with the transition from education to employment. This could include individual sessions about your career, work sessions on CV writing, interview skills, your online profile and exposure to network opportunities with companies via career fairs and assistance with job-searching methods. All our core services are offered online.

The Unit manages an online career services management system called MatiesCareers ([bit.ly/MatiesCareers](http://bit.ly/MatiesCareers)) which gives students easy access to search for jobs and apply for vacancies, internships, part-time jobs and volunteer jobs. All SU students are strongly encouraged to register on the system. It is important for students to start preparing for their transition to the world of work from their first year already. MatiesCareers provides information about the Unit's services and interesting activities happening on campus. It also affords students the opportunity to register online for the Unit's services. Several employers are registered on the platform. This means that students can also upload their CVs to potential employers and search for employer's information and work opportunities. MatiesCareers allows students to stay abreast of the Unit's operations and the world of work 24/7. Contact us via email at [careerservices@sun.ac.za](mailto:careerservices@sun.ac.za).



## CAMPUS HEALTH SERVICE

Covid-19 Notice: Stellenbosch University Campus Health Service continues to monitor the Coronavirus outbreak and assists the Rectorate's management team to manage adherence and health guidelines, in **accordance** with the National Department of Health. Due to this novel outbreak, health information is changing constantly.

During this period, all patients require an appointment to see the doctor or nurse.

The Stellenbosch University Campus Health Service (CHS) offers an integrated and accessible health service for students and staff and has an equipped dispensary for this service. CHS supports the wellness initiative for students and staff and are provided at the Stellenbosch and Tygerberg campuses.

### Quick questions about CHS:

#### Is this service free?

Services delivered by our medical doctors and physiotherapists are charged at the minimum ethical tariff. All consultations delivered by our professional nurses are free of charge. A fee is charged at medical aid tariffs for medication.

#### How are services paid for?

We are a registered provider of all medical aids in South Africa and Namibia and all accounts are sent electronically. We accept cash, card and electronic payments as well. Medical aid rates apply.

#### Does CHS cover all medical services

##### (e.g. X-rays and Dentistry)?

We have professional medical doctors, physiotherapists and nurse practitioners. All other services are referred.

#### Must I be immunised?

Being up to date with all vaccinations is an important consideration for all students (especially first years living in residences). The following vaccinations are all optional, but highly recommended:

- Influenza (flu) – annual vaccination
- Meningitis – one injection every 3 years
- Measles, Mumps and Rubella (German Measles) – if non-immune, series of 2 vaccines, 1 year apart
- Hepatitis A and B – **compulsory for Medicine and Health Sciences students**; combination (Twinrix) available, series of 3 vaccines over 6 months
- Human Papilloma Virus – series of 3 vaccines over 6 months

All vaccines are available at CHS and prices are available upon request. Please check with your medical aid if they pay for vaccinations.

#### Does CHS offer counselling?

We offer counselling to patients who come for specific screening/test e.g. HIV testing and family planning. Other counselling is given by the Centre for Student Counselling and Development (CSCD). Their contact number is 021 808 4707.

#### Is patient transport available?

We offer transport to patients in the confines of the campus. The patient can contact Campus Health Services directly.

#### How do I make an appointment?

Appointments can be made by contacting us on the numbers below or at our practice.

#### What if I have an emergency?

During office hours you can contact CHS. Alternatively for emergencies:

#### During office hours:

CHS emergency number, tel 076 431 0305

#### After hours or weekends:

ER24 emergency number, tel 010 205 3032

Stellenbosch Medi-Clinic, tel 021 886 9999 or 021 861 2000

SU 24-hour crisis line, tel 082 557 0880

Contraception helpline, tel 0800 246 432

HIV Helpline, tel 0860 HIV 911

#### For more information go to:

Website: [www.sun.ac.za/english/CampusHealth](http://www.sun.ac.za/english/CampusHealth)

Facebook: [www.facebook.com/Stellenbosch.University.CHS](https://www.facebook.com/Stellenbosch.University.CHS)

Twitter: @CHS\_StellUni

**All our practices are open from Monday to Friday between 08:00 – 17:00.**

#### Physiotherapists

Tel: 021 808 3392

Next to the gymnasium in the Sport Science building (no 84 on the map)

#### Stellenbosch practice

Tel: 021 808 3496/3494

7 Claassen Street (no 16 on the map)

#### Tygerberg practice

Tel: 021 938 9590

3<sup>rd</sup> Floor, Tygerberg Student Centre (no 10 on the map)



## LANGUAGES OF TUITION AT STELLENBOSCH UNIVERSITY

Stellenbosch University (SU) is committed to knowledge exchange in a diverse society and, through its Language Policy, seeks to extend fair access to SU to all students and staff. Multilingualism is an important differentiator for SU, where Afrikaans, English and isiXhosa are used in academic, administrative, professional and social settings. More information on language usage at SU is available on the website at [www.sun.ac.za/language](http://www.sun.ac.za/language).

### LANGUAGE POLICY

Stellenbosch University accepted a new Language Policy in 2016. This policy and the language implementation plans that go with it have been implemented since the beginning of 2017.

Every faculty compiles its own Language Implementation Plan. The policy and plans will ensure that no student who has yet to master Afrikaans or English on an academic level will be excluded from academic tuition.

### WHAT CAN YOU EXPECT?

For undergraduate modules, Afrikaans and English are the languages of teaching and learning, and are used in a combination of the following modes:

- Facilitated learning opportunities (lectures, tutorials and practicals)
- Learner support via information and communication technologies (ICTs) such as video or audio recordings (podcasts)
- Real-time interpreting of some lectures.

Where classes are large, an effort will be made wherever possible to offer separate lectures in Afrikaans and English. When students from both language groups are studying the same module, both groups will participate in group work, class assignments, tutorials and practical sessions, the aim being to stimulate frank debate and a diversity of ideas and viewpoints.

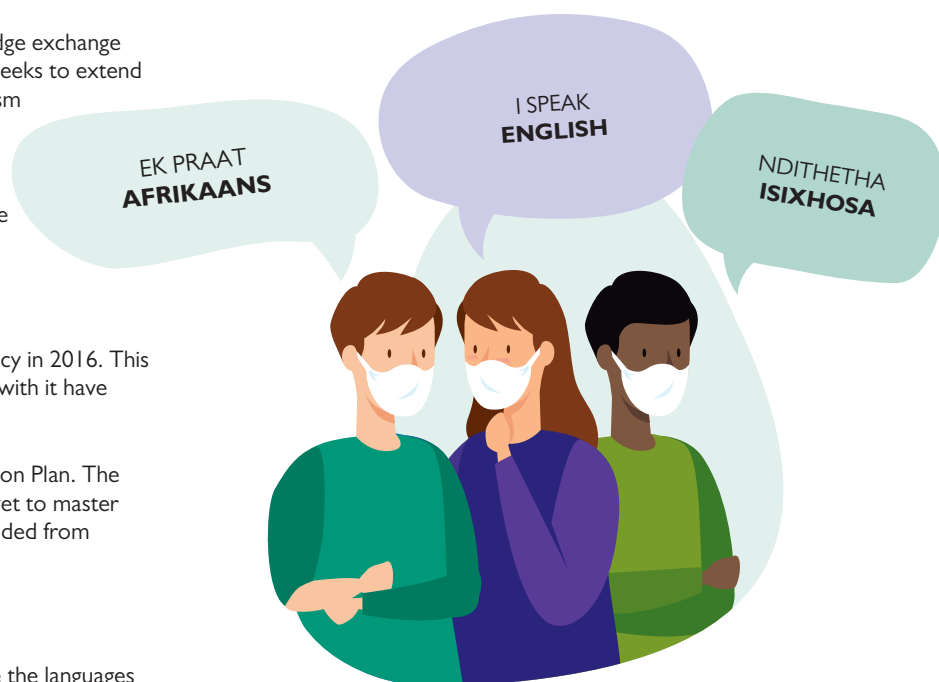
Where Afrikaans and English are used in the same lecture, all information will be conveyed in at least English, with a summary or notes of key points in Afrikaans as well. Questions will at least be answered in the language in which they are asked. In your first year, real-time interpreting will be another possible form of support where practical. In some sessions, for example field work or computer literacy, interpreting would not be feasible. In your second and subsequent years, interpreting could be provided at the request of your faculty.

Undergraduate lectures may only be offered in one language when the learning material warrants this, the lecturer concerned can only teach in that language, or the class votes unanimously for one language. For first-year students at least, real-time interpreting into the 'other' language will be available.

- The language mode for each of your academic modules will be explained in the module framework concerned, as well as on your faculty's webpage.

### THE SUPPORT YOU WILL RECEIVE

Further support in Afrikaans or English is available to students through consultations during office hours, scheduled tutorials and practicals, ICT-supported learning (audio and video recordings), and the services of the Language Centre.



All compulsory reading material will be provided in English and, except for published material, also in Afrikaans. SU's module frameworks and study guides will still be available in English and Afrikaans. In undergraduate modules, question papers for tests, examinations and other assessments will be prepared in Afrikaans and English, and students may complete all assessments and written work in Afrikaans or English. The multilingual model supports Afrikaans first-year students who have not yet mastered academic English. In their final year of study, through the academic support that is available, these students should be able to participate nationally and internationally.

### HELP EACH OTHER TO SUCCEED

The Language Policy is not ideologically motivated. It does not accord any special status to any of South Africa's official languages, and the language allocation is not based on a given percentage of lecture time per language. SU believes that multilingualism is an additional asset for any graduate. The intention is rather to use the languages of tuition in practical ways that will ensure no one is excluded from knowledge, that no one language is forced on students, and that students are encouraged to learn additional languages.

The implementation of multilingualism is complex and there is no universal quick fix. The language proficiency of a particular group of students is the biggest variable – it will differ from module to module, and from year to year. Therefore language application should be flexible to adapt to changing needs. Feedback to lecturers is important. Share examples of successful language implementation and make suggestions for improvement with a positive and helpful attitude.

Where students believe that language usage is jeopardising their study success, or that they are being excluded from the academic offering on the basis of the language of tuition, the matter can be taken up in the department or faculty, or through the faculty's representatives on the Academic Affairs Council that operates under the auspices of the Student Representative Council. If the matter cannot be satisfactorily resolved through the internal processes, students can approach the university ombud at [ombud@sun.ac.za](mailto:ombud@sun.ac.za).



## YOUR JOURNEY TO ACADEMIC SUCCESS STARTS HERE

University is not a super high school – it is something entirely different. Therefore, do not expect your welcoming at SU to be anything like your welcoming at a high school or school hostel.

The welcoming period is the start of your journey to academic success. This learning journey continues for as long as you study at Stellenbosch University (SU). In the welcoming week already, you start to integrate the various parts of your life at SU, and you will learn that the residences, PSO wards and clusters are value-driven environments characterised by hospitality, friendliness and dignity.

As newcomer student, you enter a phase of rapid development. Remember, your social and emotional adjustment to the university experience constitutes an integral part of your learning journey and personal development. In particular, keep the following in mind: A newcomer's experiences is a period of intense change, during which 'familiar' attitudes, values and behaviour patterns are often adjusted and developed. This also facilitates the development of challenging and inspiring thought patterns. (Research shows that you and your fellow newcomers are more susceptible to change during the welcoming period than in any other stage of your university careers.)

Your introduction to social and community structures during the welcoming week is important. These include structures such as clusters, residences, PSO wards, mentor groups, faculties (such as study and tutor groups), sport clubs and societies.

Role models who live by the University's values and achieve success on their learning journeys may be of great value to you.

As part of the welcoming programme, it is extremely important for you to adhere carefully and timeously to the administrative and academic requirements of your faculty. This will ensure that you are ready for the commencement of the academic part of your learning journey on the very first day of class.

The two most important development phases of a newcomer's learning journey are:

- coping with freedom (when and how to say no); and
- negotiating on your own behalf.

Start with these in the welcoming week already. Measure everything in the welcoming programme against the following questions, and ask yourself how the various aspects of the welcoming programme fit into the bigger picture.

Ask yourself the following questions on every activity in which you participate during the welcoming week. (Remember, this includes everything, even your own decision sometimes not to participate in activities.)

- How does this promote my journey to successful studies (learning journey)?
- Does it introduce me, as a newcomer student, to positive social relations/groups?
- Does it contribute to emotional stability and emotional development?
- Does it help me to join sound listening, living and learning communities, and encourage me to participate both independently and interdependently?
- Does it create a relaxed, safe and constructive listening, living and learning space, where I can get clarity on the nature, content, choice and form of my learning journey?



## STELLENBOSCH UNIVERSITY'S VALUES, HUMAN RIGHTS AND DISCIPLINARY CODE

Stellenbosch University (SU) welcomes open dialogue and wishes to encourage a culture of frank debate on our campuses. Engagement and dialogue should be integrated into all aspects of campus life: in class discussions, over a cup of coffee in student hubs, all clusters and in living areas. Students should think critically about the challenges and issues of our society. This is how thought leadership is developed – an important attribute of our graduates.

### HOW TO REPORT ISSUES OR COMPLAINTS

Students are encouraged to use the various internal processes and systems to report issues, complaints or grievances. The Academic Affairs Council (AAC), a body of the Students' Representative Council, has student representatives in each faculty, and in the social context, the clusters and student residences have student leaders who can support students. Students can also approach the Division Student Affairs at [studentaffairs@sun.ac.za](mailto:studentaffairs@sun.ac.za).

Should a matter not be satisfactorily resolved via internal processes or systems, students can use the following reporting mechanisms:

- **Ombud**

SU has an independent ombud who looks into the problems and complaints of students, parents or staff when these cannot be satisfactorily resolved through university structures or where existing structures are found lacking.

**Adv Rina Meyer**

[ombud@sun.ac.za](mailto:ombud@sun.ac.za)

**Contact number:** 082 807 2994 or 021 883 9128

**Office address:** 34 Ryneveld Street, Ryneveld Plaza, Stellenbosch

**For appointments:** Grace Bruintjies at [graceb@sun.ac.za](mailto:graceb@sun.ac.za)

- **Ethics helpline**

For some years, SU has subscribed to an independent ethics reporting service for the anonymous reporting of irregularities. This service is independently managed by **Deloitte**.

**Tel:** 0800 204 549

**Fax:** 0800 007 788.

**Email:** [sun@ethics-line.com](mailto:sun@ethics-line.com)

**Web:** [www.tip-offs.com](http://www.tip-offs.com)

- **Equality Unit**

Incidents of unfair discrimination, victimisation, sexual harassment and other forms of harassment can be reported to the Equality Unit at [unfair@sun.ac.za](mailto:unfair@sun.ac.za). Please take note of the Policy on Unfair Discrimination and Harassment.

### DISCIPLINARY CODE FOR STUDENTS

When signing the SU application form, students undertake to familiarise themselves with all the rules, regulations, policies, prescriptions and the Disciplinary Code for Students. Should a student be charged with transgressing any of these, he or she cannot plead ignorance as a defence.

The Disciplinary Code for students states that an individual is guilty of misconduct when, among other things, he/she wrongfully violates another person's fundamental rights as set out in the Bill of Rights, chapter 2 of the Constitution, 1996, or acts in conflict with any other South African laws or SU rules, regulations or prescripts. This includes hate speech, sexual harassment, victimisation, violence or incitement, unacceptable or improper behaviour, the humiliation of fellow students or staff, and assault. Thus, use your own good

judgment and act responsibly, especially when using the social media. **Please familiarise yourself with the notice regarding the use of social media.**

Although legislation, policies, guidelines and codes are necessary to ensure order in society, SU strives to create a welcoming campus culture through shared values.

### SU'S VALUES



## IMPORTANT NOTICE REGARDING SOCIAL MEDIA

Stellenbosch University (SU) recognises the importance of the internet and social media in shaping public thinking about our University and our services, students, staff and stakeholders. SU also recognises the importance of our students and staff engaging in and helping to stimulate conversation through interaction in social media. Students and staff are encouraged to interact online about SU matters and developments in higher education. However, it is important to understand that **the use of social media as a communication channel is subject to existing SU policies and procedures**, specifically the:

- Disciplinary Code for Students of Stellenbosch University (applicable to students)
- Policy on Unfair Discrimination and Harassment (applicable to staff and students)
- Electronic Communications Policy (applicable to staff and students)

All students and staff are responsible for their own compliance with these policies and should take the time to read and understand these. Behaviours such as misconduct, harassment and victimisation conducted online are addressed in these policies. Any form of online bullying, verbal abuse, defamation, slander and/or name-calling, among others, falls into the same category as face-to-face communication and written communication.

Allegations of online misconduct, harassment and victimisation are regarded just as seriously as similar actions through traditional verbal and written communication. An aggrieved party may report such behaviour (e.g. misconduct, harassment or victimisation through any of the social media channels) to the **Equality Unit**, which may refer matters to Student Discipline (for students) or Human Resources (for staff) as necessary.

The Equality Unit's contact details are:

- unfair@sun.ac.za
- 021 808-3136
- 39 Victoria Street, Stellenbosch

The Corporate Communication Division is developing a comprehensive Social Media Policy but until the policy has been completed, the rules in existing policies and this notice will apply.

*"Social media" is defined as any mobile or web-based application or service that allows the creation and exchange of user-generated content, such as a blog, wiki, social network and other interactive websites. Examples of social media platforms include, but are not limited to, Facebook, Twitter, YouTube, Instagram and news websites that allow the public to comment.*



## INSURANCE: STUDENTS AND THEIR PROPERTY

**“A safe campus for all”** – these words give expression to a core aspiration of Stellenbosch University (SU). Not only does SU conduct a continuous campaign to make staff, students and visitors aware of potential risks that may threaten their safety and/or health, but where necessary, Risk Management and Campus Security is made use of, as well as the South African Police Service, to continually enforce and monitor security measures.

Students participate in academic trips, laboratory experiments, sport and other voluntary activities where they can be exposed to risks. The University takes all reasonable measures to protect students and their property when they participate in these activities and during their daily campus life.

It is however impossible to eliminate all risks. Since it is not possible for the University to protect students and their property against all risks, students therefore participate in all University related activities on their own risk.

The University has insurance cover against injuries you might sustain while you engage in activities related to your studies. This cover includes activities on campus, in our laboratories, and on field trips. If you have a claim, you must inform the university immediately. You must also complete the insurance claim form as soon as possible. The University is not liable for any claims that are not covered by this insurance. The University would like to draw attention to the fact that each student is responsible for his/her own insurance and therefore recommends that he/she takes out sufficient comprehensive insurance for his/her personal possessions.

## FREE WRITING ADVICE

**Do you need a bit of extra help with your writing assignments?**

**Do you sometimes struggle with particular writing issues?**

The Writing Lab of the University's Language Centre offers a free one-on-one consultation service to all SU students and staff. Friendly, trained writing consultants will assist any student who would like advice on or assistance with any writing assignment. If you struggle to get started on assignments or worry that your ideas are not clear and do not flow well, you will get guidance at the Writing Lab. We will support you as you improve and sharpen your writing skills, and your improved skills should definitely lead to better marks.

A consultation is 50 minutes long, but we encourage you to come for follow-up consultations until you are satisfied with your writing.

We do not do editing at the Writing Lab. We advise you on how to improve your texts. Our aim is to equip you as a writer with writing skills which you can use in other writing tasks at University and beyond.

Book your consultation online through KENAKO, the Writing Lab's electronic booking system, on the My.SUN portal or visit the Writing Lab at the Language Centre, 44 Banghoek Road. Appointments need to be made at least 48 hours in advance.

### Contact details

Anne-Mari Lackay (amlackay@sun.ac.za) or  
Vinelene Hartley (vhartley@sun.ac.za) 021 808 2989/2161

Visit our website for more information on other Language Centre services (<http://www.sun.ac.za/languagecentre>).

## SUCSF

**STELLENBOSCH UNIVERSITY'S  
CO-CURRICULAR SUPPORT FUND**

Stellenbosch University's Co-curricular Support Fund (SUCSF) is a student travel bursary fund for national and international co-curricular events, such as student leadership conferences and other opportunities that would benefit the student and our community.

**AM I ELIGIBLE TO APPLY FOR FUNDING?**

- Does the event have a co-curricular theme?
- Will I graduate within the minimum time of my programme, plus one year?
- If this is my first year at SU, have I successfully completed my first semester?

**WHAT CAN I USE THE FUND FOR?**

- Airfare
- Visa fees
- Conference fees
- Accommodation
- Transfers

Applications are considered at the discretion of the SUCSF committee, according to the prevailing COVID-19 regulations and possible risks.

Visit [www.sun.ac.za/sucsf](http://www.sun.ac.za/sucsf) for more information.

**WELCOMING CHAMPIONS**

Students in yellow T-shirts will be situated at different points around central campus during the welcoming week to assist newcomer students and parents who need information and directions to the venues they are supposed to go to. The info champions are well informed about events and the location of venues regarding the welcoming programme. This service aims to contribute to, and enhance, a positive and welcoming "Matie experience" for all first-years and their parents and guardians.

Admin B (Victoria Street opposite Wilgenhof) and Admin A (on the T junction of Ryneveld and Crozier streets) both have an enquiries desk for any other information.

Email enquiries [info@sun.ac.za](mailto:info@sun.ac.za)  
Telephonic enquiries 021 808 9111

**SOCIETIES COUNCIL  
EXECUTIVE COMMITTEE****CHAIRPERSON**

Nomzamo Buthelezi  
[shenge@sun.ac.za](mailto:shenge@sun.ac.za)

**VICE-CHAIRPERSON**

Sinegugu April  
[21743339@sun.ac.za](mailto:21743339@sun.ac.za)

**ADMINISTRATIVE  
OFFICER**

Tamara Wicomb  
[22134433@sun.ac.za](mailto:22134433@sun.ac.za)

**REGISTRAR**

Tebogo Mphahlele  
[19966121@sun.ac.za](mailto:19966121@sun.ac.za)

**FINANCIAL ADVISOR**

Manqoba Mdau  
[20060033@sun.ac.za](mailto:20060033@sun.ac.za)

**SECRETARY**

Monwabisi Petersen  
[21168822@sun.ac.za](mailto:21168822@sun.ac.za)

@SocietiesSU    

## PRE-REGISTRATION CLEARANCE (VERIFICATION) OF INTERNATIONAL DEGREE-SEEKING STUDENTS

### DOCUMENTATION BEFORE ACADEMIC REGISTRATION 2021

#### 1. FIRST YEAR INTERNATIONAL UNDERGRADUATE STUDENTS

- First-year international undergraduate students do not need to apply for their matriculation exemption certificate prior to registration for the 2021 academic year.
- However, you need to ensure you meet the exemption requirements by sending a certified copy of your final results to Ms Carmelita Talmarkes at [suiundergrads@sun.ac.za](mailto:suiundergrads@sun.ac.za), before pre-registration can be finalised.

An e-mail confirming that you do meet the exemption requirements will be sent to you.

#### 2. SOUTH AFRICANS WITH FOREIGN SCHOOL QUALIFICATIONS (First Years)

- Pre-registration clearance does **not** apply to these students.
- Students must send scans of their **original final results** to Ms Chantal Grove-Le Guillou at [chantalg@sun.ac.za](mailto:chantalg@sun.ac.za).

#### 3. PRE-REGISTRATION CLEARANCE (VERIFICATION OF DOCUMENTATION)

Pre-Registration clearance will commence as from Monday, 4 January 2021. **All** international students are required to provide copies of supporting documentation for pre-registration clearance prior to registering for the academic programme.

E-mail the required documentation to the following e-mail addresses using your **SURNAME** and **SU STUDENT NUMBER** as a reference.

|                                   |                                                                              |
|-----------------------------------|------------------------------------------------------------------------------|
| Stellenbosch Campus:              | <a href="mailto:inpreregistration@sun.ac.za">inpreregistration@sun.ac.za</a> |
| Tygerberg Campus (Undergraduate): | <a href="mailto:bdgeyer@sun.ac.za">bdgeyer@sun.ac.za</a>                     |
| Tygerberg Campus (Postgraduate):  | <a href="mailto:stimm@sun.ac.za">stimm@sun.ac.za</a> or                      |
| Tygerberg Campus (Postgraduate):  | <a href="mailto:mdamon@sun.ac.za">mdamon@sun.ac.za</a>                       |

- **Certified copy** of your valid passport
- **Certified copy** of valid study visa issued to study at Stellenbosch University or Proof of Permanent residence / Refugee Status / Asylum Seeker
- Proof of valid South African medical cover
  - Students are advised to view the list of *Student Medical Cover Options* on the following website: [www.sun.ac.za/international](http://www.sun.ac.za/international)
  - Medical cover is not compulsory for Permanent residence, Refugee Status and Asylum Seeker students
- Proof of minimum compulsory initial fee payment or Scholarship letter

A confirmation e-mail will be sent to you once pre-registration clearance has been finalized and you can then commence with online registration for your academic programme.

**All international degree-seeking undergraduate first-year students** need to follow the same welcoming programme as the SA students as per the following link: [www.sun.ac.za/welcome](http://www.sun.ac.za/welcome).

Please include your **SURNAME** and **SU STUDENT NUMBER** in the subject line of all e-mail correspondence.

Please allow at least 3 working days response time.

## LIBRARY

Library orientation is offered in the Stellenbosch University Library on 8 and 9 March to familiarise new students with the following aspects of the library:

- Librarian: meet yours
- First-years information on the library website
- First-years assignments: "assignment step by step"

### DEELNEMERS AAN DIE ORIENTERINGSPROGRAM STAAN 'N KANS OM PRYS TE WEN.



Orientation programmes are also presented at the following libraries: Theology, Music, Engineering & Forestry and Medicine & Health Sciences. The orientation is followed up the next week with individual training under the title GetSmart@URLibrary.

We would like to invite all parents of first-year students to visit Stellenbosch University Library during welcoming to see the facilities and services available to Matie students. Visit our prestigious Africana room, see the Learning Commons and the E-classroom. Our E-collection include all subjects both national and international.

The Library is dedicated to support the academic endeavour of our students.

### FACULTY PROGRAMMES INDICATE THE DATES AND TIMES OF LIBRARY VISITS!

|                   |                                                                  |
|-------------------|------------------------------------------------------------------|
| <b>Enquiries:</b> | Pieter du Plessis                                                |
| <b>Tel:</b>       | 021 808 4882                                                     |
| <b>Email:</b>     | <a href="mailto:pdupless@sun.ac.za">pdupless@sun.ac.za</a>       |
| <b>Web:</b>       | <a href="http://www.library.sun.ac.za">www.library.sun.ac.za</a> |

## MATIES SPORT



### YOU! YES, YOU!

Did you do sport at school? Are you considering joining a sport club at Stellenbosch University? Do it! We even offer an Esports league. And if sport isn't your thing, you can still be part of the Maroon Machine by becoming a #MatiesMVF (most valued fan). Like and follow us on Facebook, Twitter and Instagram and become part of the bigger Maties Sport family.

Maties Sport believes sport is a great contributor towards student success – regardless of whether you are a high-performance athlete or someone who just want to be active and healthy.

Participation in sport teaches self-discipline and time management and offers crucial outlets for stress and tension. Both competitive and recreational sport provide students with opportunities to socialise, develop friendships and maintain a healthy and balanced lifestyle. Maties Sport accepts co-responsibility for the optimal holistic development of student-athletes and the empowerment of high-performance athletes.

That is why Maties Sport invests in its high-performance sport codes as well as its recreation and active lifestyle programme – offering ALL students the opportunity to engage in a healthier and happier lifestyle.

Maties Sport has 30 sport clubs, making it easy to find a sport that suits your needs and skills level.

High performance sport codes are: rugby, hockey, netball, football, athletics, swimming, cricket, basketball and tennis. Competitive sport codes are: cycling, table tennis, squash, badminton, golf, gymnastics, rowing, canoeing, sailing, water polo, surfing, judo, equestrian, volleyball, fencing and chess. Recreation and active lifestyle sport codes are: equestrian club, underwater sport, volleyball, Ultimate (frisbee) and cheerleading. The Maties Parasport Club also offers athletics, swimming, cycling, wheelchair rugby and goal ball for people with disabilities.

You'll have the opportunity to participate in local as well as regional, national and even international competitions, such as:

- Varsity Cup, Varsity Sports, Intervarsity and USSA;
- Regional and local leagues;
- Residence leagues and competitions.

Only an elite few will be selected for a Varsity Cup, Varsity Sports or USSA teams, but that's no reason to stay at home. The spotlight falls as much on the fans as the players, with Maties Sport launching a drive to encourage #MatiesMVF's (most valued fans) to support their teams when they play at home.



#### BENEFIT FROM:

- The High Performance Sport Unit (<https://blogs.sun.ac.za/highperformance>). The focus falls mainly on three key areas: Sports medicine, performance enhancement and empowerment;
- The Recreation and Active Lifestyle Unit (RALU) which promotes physical wellness for staff and students and creates an environment where non-conventional sport and activities are enjoyed and played;
- The Centre for Sports Leadership;
- Maties Gymnasium.

#### DOWNLOAD:

- Get the Maties App and stay informed about events – especially sport events on campus.

#### CONTACT DETAILS:

|                   |                                                                                    |
|-------------------|------------------------------------------------------------------------------------|
| <b>Tel:</b>       | 021 808 4642                                                                       |
| <b>Email:</b>     | <a href="mailto:matiesport@sun.ac.za">matiesport@sun.ac.za</a>                     |
| <b>Web:</b>       | <a href="http://www.sun.ac.za/sport">www.sun.ac.za/sport</a>                       |
| <b>Facebook:</b>  | <a href="http://www.facebook.com/SUMatiesSport">www.facebook.com/SUMatiesSport</a> |
| <b>Twitter:</b>   | @MatiesSport                                                                       |
| <b>Instagram:</b> | MatiesSport                                                                        |



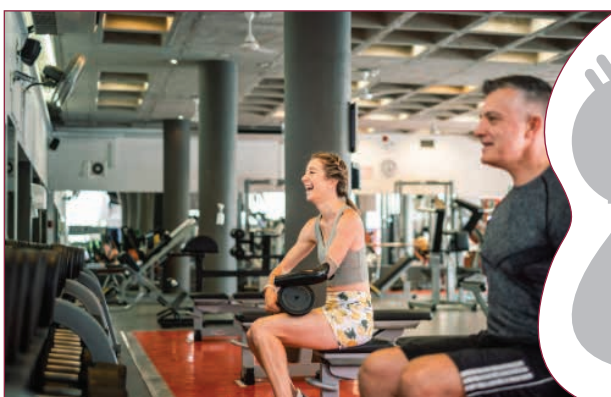
## MATIES GYMNASIUM

We would like to officially welcome all 2021 students. We sincerely hope that you and your loved ones are all safe and remain fit and healthy.

Please keep in mind that the usual social distancing restrictions of 1.5m are still in place. Also, until further notice, you will still be screened when entering the facility. Although we have a constant cleaning regime and close the gym for sanitizing during the day, we would appreciate your help, as we are all in this together. Please continue to regularly sanitize your hands and the equipment before and after use. The Maties Gym Code of Practice is still available at [https://youtu.be/AIcE\\_n7RDnE](https://youtu.be/AIcE_n7RDnE)

You are further also reminded that the wearing of masks inside the gym remains compulsory, *EXCEPT when partaking in vigorous exercise whilst keeping a social distance of at least 2m from other members.* Please remember to still make use of our online booking platform to book your gym visits. Bookings can be made up to 7 days in advance by clicking on the following links:

**Stellenbosch:** <http://bit.ly/matiesgymstellies>  
**Tygerberg:** <http://bit.ly/matiesgymtygerberg>



### Please take note students receive preferential rates!

All Stellenbosch University students, registered for 2021, receive a 15% discount on our normal gym fees. In addition, we offer various membership options from 1 to 12 months and it is possible to use your student account to settle your gym fees. Please see our website for more information or contact the gym directly at the contact details at the end of this newsletter.

Additionally, we are excited to announce the following new additions to our existing programs for 2021. Should you wish to run your first half marathon, marathon, participate in a cycling event or lose some excess weight in the new year, we have a program for you:

|                            |                                                                   |
|----------------------------|-------------------------------------------------------------------|
| <b>Run Fit</b>             | 16 Weeks of running and gym programs at R 1 200                   |
| <b>Cycle Fit</b>           | 16 Weeks of cycling and gym programs at R 1 200                   |
| <b>Fit for Weight loss</b> | 6 Months program at R 2 200 includes a meal plan and gym program. |
| <b>Strength Fit</b>        | 4 Week gym program at R 200                                       |
| <b>Muscle Fit</b>          | 4 Week gym program at R 200                                       |

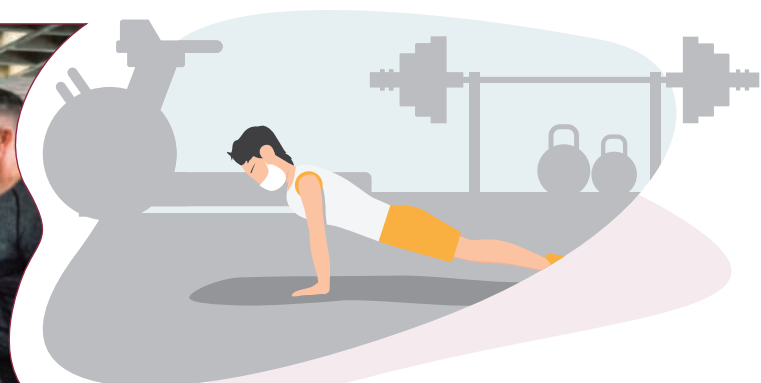
**Please contact Dexter Chapman ([dexter@sun.ac.za](mailto:dexter@sun.ac.za))** for more information on these programs.

If you have not visited our facility yet, please come in for a tour! We hope to meet you in the gym soon.

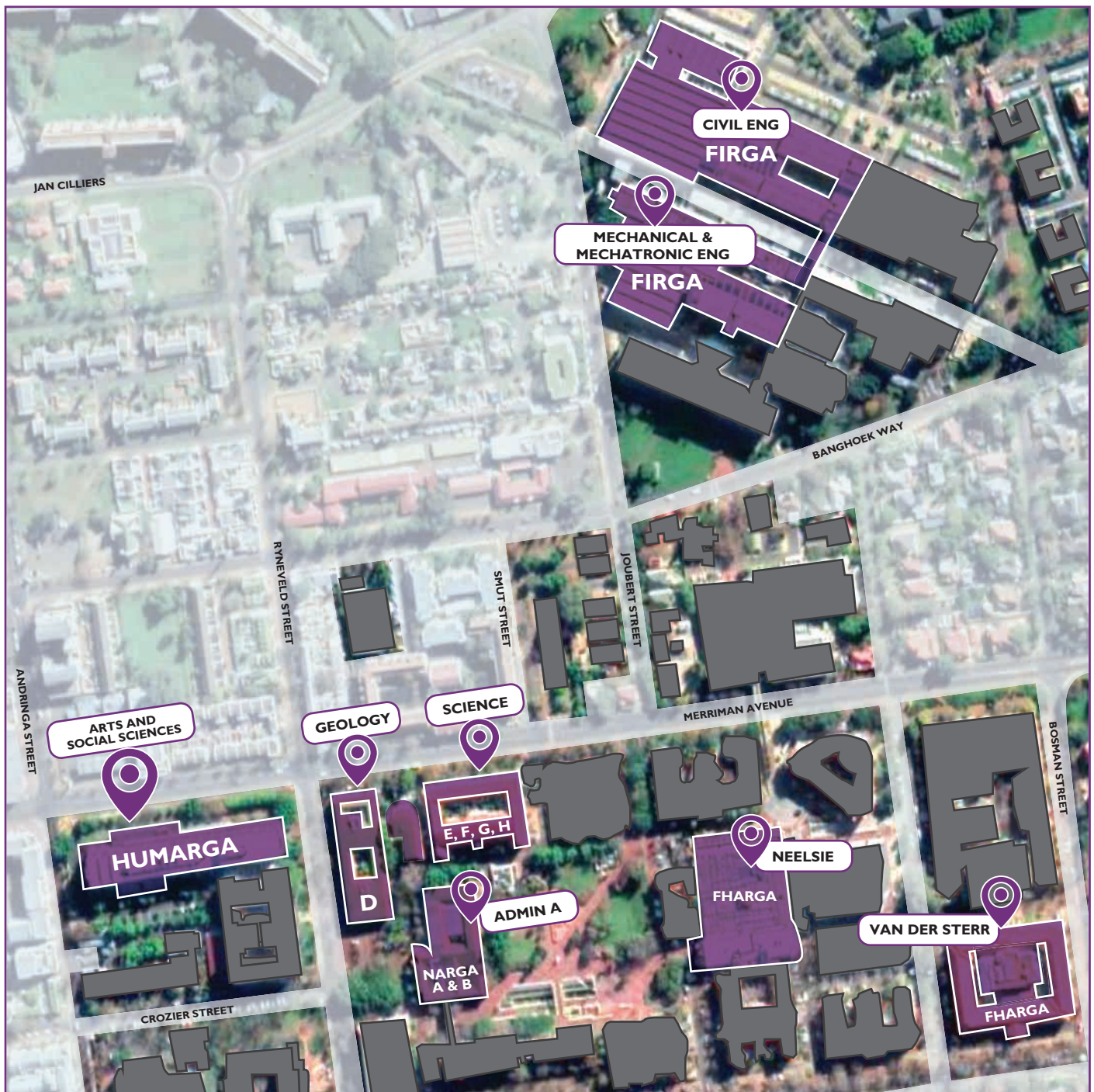
Warm regards,  
 Maties Gymnasium  
[gymsales@sun.ac.za](mailto:gymsales@sun.ac.za)  
<https://www.matiesgym.co.za>

 <https://www.instagram.com/matiesgymnasium/>

 <https://www.facebook.com/MatiesGymnasium>



## COMPUTER USER AREAS (CUA's)



### TECHNOLOGY ON CAMPUS

- Students may connect their own devices (PCs, laptops, tablets or smart phones) to the University's campus network, subject to certain conditions.
- To avoid long queues, you can register your private device online. More information is available on <http://www.sun.ac.za/ITHUB> or you can use the direct RegisterMe link.
- Your central point for online information is [my.sun.ac.za](http://my.sun.ac.za). Here you will find access to SUNLearn, your exam results, password change and various other services.
- For all computer and IT-related information, please visit <http://www.sun.ac.za/ITHUB> or request service at <http://servicedesk.sun.ac.za>.
- For up to date IT news on campus and elsewhere follow us on Twitter at @ITStellenUni.

### TEGNOLOGIE OP KAMPUS

- Studente kan hulle eie toestelle (rekenaars, skootrekenaars, tablette of slimfone) aan die Universiteit se kampusnetwerk koppel, onderworpe aan sekere voorwaardes.
- Om lang toue te vermy, kan jy jou privaattoestel self aanlyn registreer. Meer inligting op <http://www.sun.ac.za/ITHUB> of jy kan die direkte RegisterMe skakel gebruik.
- Jou sentrale kontakpunt vir alle aanlyn-inligting is [my.sun.ac.za](http://my.sun.ac.za). Hier sal jy toegang kry tot SUNLearn, jou eksamenuitslae, wagwoordverandering en vele ander dienste.
- Vir alle rekenaar- en IT-verwante inligting, besoek <http://www.sun.ac.za/ITHUB> of versoek 'n diens by <http://servicedesk.sun.ac.za>.
- Om op hoogte te bly van IT-nuus op kampus en in die res van die wêreld, volg ons op Twitter by @ITStellenUni.



## CUA – INFORMATION

## FHARGA

|           |                                                                                                                                                                                                                                                       |
|-----------|-------------------------------------------------------------------------------------------------------------------------------------------------------------------------------------------------------------------------------------------------------|
| Venue     | Van Der Sterr Building, c/o Victoria & Bosman Street and CJ Langenhoven Student Centre, Level 1 (Neelsie)                                                                                                                                             |
| Faculty   | Economic & Management Sciences                                                                                                                                                                                                                        |
| Website   | <a href="http://www.sun.ac.za/english/faculty/economy/ebsk">http://www.sun.ac.za/english/faculty/economy/ebsk</a>                                                                                                                                     |
| Email     | FHARGA@sun.ac.za                                                                                                                                                                                                                                      |
| Enquiries | <b>Neelsie</b><br>Manager: Johan van Rooyen, Room E9.2<br>Chief Technical Officer: Chris Bosman, Room E8.2<br>Assistant Technical Officer: Thurlo Muller, Room E7.2<br><b>Van Der Sterr Building</b><br>Technical Officer: Remé du Plessis, Room 3053 |

## FIRGA

|           |                                                                                                                                                                                                               |
|-----------|---------------------------------------------------------------------------------------------------------------------------------------------------------------------------------------------------------------|
| Venue     | Mechanical and Mechatronic Engineering Building<br>Electronic classrooms: M2002, M2004 (2 <sup>nd</sup> Floor) and M3002 (3 <sup>rd</sup> Floor)<br>Computer User Area (Firga): M1002 (1 <sup>st</sup> Floor) |
| Faculty   | Engineering                                                                                                                                                                                                   |
| Website   | <a href="https://www.firga.sun.ac.za">https://www.firga.sun.ac.za</a>                                                                                                                                         |
| Email     | firga@sun.ac.za                                                                                                                                                                                               |
| Enquiries | Manager: Johannes Brand, Room M2001<br>Technical Officer: Quinton Hendrikse, Room M3003<br>Junior Technical Officer: Bennie Lindoor, Room M1007                                                               |

## HUMARGA

|           |                                                                                                                        |
|-----------|------------------------------------------------------------------------------------------------------------------------|
| Venue     | Arts and Social Science Building, Third floor, Merriman Avenue                                                         |
| Faculties | Arts and Social Sciences, Education, Law and Theology as well as blind and partially sighted students of all faculties |
| Website   | <a href="https://humarga.sun.ac.za">https://humarga.sun.ac.za</a>                                                      |
| Enquiries | Manager: Jan Louw, Room 301<br>Assistant Manager: Petro Newman, Room 301<br>Helpdesk: Room 306                         |

## NARGA

|           |                                                                                                                                                                                                                                                                                                                                                                                           |
|-----------|-------------------------------------------------------------------------------------------------------------------------------------------------------------------------------------------------------------------------------------------------------------------------------------------------------------------------------------------------------------------------------------------|
| Venue     | NARGA A, B & Open Area: Admin A<br>NARGA D: Geology Building<br>NARGA E, F, G & H: Natural Sciences Building, Third floor                                                                                                                                                                                                                                                                 |
| Faculties | Science and AgriSciences                                                                                                                                                                                                                                                                                                                                                                  |
| Website   | <a href="https://narga.sun.ac.za">https://narga.sun.ac.za</a>                                                                                                                                                                                                                                                                                                                             |
| Email     | narga@sun.ac.za                                                                                                                                                                                                                                                                                                                                                                           |
| Enquiries | <b>AI Perold Building</b><br>Manager: Ilse de Kock, Room 2016b<br><b>Admin A</b><br>Technical Officers: Johan van Rooyen & Richard Thompson, Room 2091 (Service Desk and User Support)<br><b>Natural Sciences Building</b><br>Senior Technical Officer: Brandon April, Room 3009 (Windows Software)<br>Head: IT Services (Sciences): Paul Erasmus, Room 3007 (Linux System Administrator) |

## TAKE YOUR SAFETY SERIOUSLY

Students should take the same safety precautions in Stellenbosch than elsewhere in South Africa. Thousands of mobile phones, computers and vehicles attract criminals.

## FOLLOW THESE TIPS:

- Never walk alone, especially at night. Plan to walk in groups, use the shuttle service or request security to escort you.
- Keep your phone and valuables out of sight of other people.
- Carry a whistle and pepper spray at all times to be able to draw attention if needed. Criminals hate attention.
- Choose the safest route, even if it is not the shortest. Victoria Street and Bosman Street need to be the core of your route. At night a security officer is on duty in the mobile security kiosks.
- Avoid isolated areas, especially when you exercise early in the morning or late in the afternoon.
- Be conscious of your environment, as criminals prefer to target someone not aware of his/her direct surroundings.
- Keep a safe distance if a motorist asks for directions.
- If you suspect that someone might be following you, change direction.
- Be a caring Matie: accompany a friend.
- Property on a car seat is tempting to a thief. Lock it in the boot.

**Pedestrian escort service:** If you need to move between campus buildings, or from a building to your car after dark (19:00 – 05:00), a security officer will walk with you. Call 021 808 4891 or alternatively 021 808 4202 and wait for an officer to join you. You can also WhatsApp the security office at 082 808 2333 to request the service. Please note that voice calls to this number is not possible. A pedestrian escort service is also available on Tygerberg campus. WhatsApp the Tygerberg security office on 083 938 1841.

## SAVE THESE NUMBERS ON YOUR MOBILE PHONE

|                                |               |
|--------------------------------|---------------|
| Stellenbosch 24-hour emergency | 021 808 2333  |
| Toll-free number               | 0800 02 58 27 |
| WhatsApp pedestrian service    | 082 808 2333  |
| General enquiries              | 021 808 4202  |
| Tygerberg 24-hour emergency    | 021 938 9507  |
| Toll-free number               | 0800 00 67 67 |
| WhatsApp pedestrian service    | 083 938 1841  |

[www.sun.ac.za/safety](http://www.sun.ac.za/safety)



# MATIES CARE ABOUT THE ENVIRONMENT

Stellenbosch University (SU) plays a significant role in forging the path to a sustainable future. The University is on a journey to reduce its carbon footprint. Sustainability is a core component of SU's strategic initiatives and we aim to create a community of sustainable changemakers. Together we can design a more sustainable future that will reduce our impact on the environment – leaving behind greener and healthier ecosystems.

This document contains a short summary of the eight aspects relevant to creating a more environmentally sustainable University. For more information, visit [www.sun.ac.za/sustainability](http://www.sun.ac.za/sustainability)



## TWO OPTIONS TO REGISTER AS A STUDENT



There are two different options to register. They are:

- **self-registration (online registration)**, or
- the assisted registration process on the Stellenbosch campus (with venue(s) as indicated in the registration guide), or on the Tygerberg campus for students in the Faculty of Medicine and Health Sciences.

### SELF-REGISTRATION (ONLINE REGISTRATION)



SCAN HERE

- If you have completed the National Senior Certificate or the IEB-certificate, you will be able to register yourself.
- If you are a first-year, **self-registration opens on 1 March** up to the time slot determined for your faculty's registration on the Stellenbosch or on the Tygerberg Campus.
- **Self-registration can be done from any computer with access to internet on [www.maties.com](http://www.maties.com).**

If you register on the Stellenbosch campus, you can get your student card in the Student Center (Neelsie), in the faculty's allotted registration time slot. If you register on Tygerberg Campus, you must consult this campus' registration information sheet for the collection of your student card.

Candidates from international school systems can normally not make use of self-registration. It will, however, be beneficial if candidates from international school systems can send their final school results, as well as the certificate of university exemption that must be obtained from the SA Matriculation Board, to:

- South African citizenship: [chantalg@sun.ac.za](mailto:chantalg@sun.ac.za) (SA citizens will be able to register online after the evaluation of their results, provided that all requirements are met. Check your registration status online.)
- Foreign citizenship: [ctalmarkes@sun.ac.za](mailto:ctalmarkes@sun.ac.za) (Foreign citizens cannot register online.)

Your **student number** must be supplied as well.

### REGISTRATION ON THE STELLENBOSCH OR TYGERBERG CAMPUS



SCAN HERE

- Registration at the Tygerberg campus is scheduled for Friday 5 March. Consult this campus' registration information sheet for specific time slots.
- Registration at the Stellenbosch campus is scheduled per faculty and allocated to time slots for Monday 8 and Tuesday 9 March.

- First-year students who have not registered on these dates and who obtain special permission to register (the programme for which you want to register might already be full), will have to register later in the course of that week together with the senior students of their faculty, as indicated in the registration information guide.
- First-year students, who register later than that, will be charged a levy of R500, on condition that the relevant Faculty Administrator has granted permission for late registration.
- If you do not register yourself before you arrive in Stellenbosch or at Tygerberg, it is your responsibility to ensure that you comply with all the admission requirements of your study programme before you leave for Stellenbosch.

If you are going to register on the Stellenbosch campus, **you must report with the following original documents at registration** in your faculty's allotted registration time slot:

1. Advice of Results of the 2020 NSC or IEB final school-leaving examination.
2. NSC or IEB candidates who matriculated in 2019 or earlier: National Senior Certificate.
3. Candidates from international school systems: School-leaving certificate/s and certificate of university exemption issued by the SA Matriculation Board.
4. Candidates who studied at other universities: The document/s mentioned at 2 or 3 above, as well as an original academic transcript/record and certificate of good conduct issued by the university concerned.
5. If you are not a South African citizen: a valid study permit.

If you are going to register on the **Tygerberg Campus**, you must present the original documents as indicated in this campus' registration information sheet.

**Please take note of the notice regarding the writing of the National Benchmark Tests.**

**Please note the above schedule is conditional and assumes that the current COVID-19 regulations will not change, and no changes may become necessary to mitigate any associated risks.**



## REGISTRATION SCHEDULE 2021

Registration of all new first-year students  
(**who could not register themselves via [www.maties.com](http://www.maties.com)**)

### FACULTY OF MEDICINE AND HEALTH SCIENCES

#### FRIDAY 5 MARCH

**09:00 – 09:30** Francie van Zijl Residence

**09:30 – 10:00** Kerkenberg and Meerhoff

**10:00 – 10:30** Hippokrates

**10:30 – 11:45** Osler (Private Students' ward)

**Venue** Venues as indicated in registration booklet

**14:00 – 16:00** Registration of new first-year students for B of Occupational Therapy and B of Speech- Language and Hearing Therapy who **could not register themselves via [www.maties.com](http://www.maties.com)**

**Plek** Ms Zenda Jansen, room A3008, Admin A, Stellenbosch campus

### FACULTIES ON STELLENBOSCH CAMPUS

#### MONDAY 8 MARCH

**08:00 – 09:00** Education

**08:30 – 09:30** Engineering

**09:00 – 10:30** Law  
LLB, BCom (Law), BAccLLB, BA (Law)

**10:30 – 11:30** Theology

**10:30 – 11:30** AgriSciences

**13:30 – 15:00** Science

**14:30 – 16:00** Economic and Management Sciences BAcc, BCom (all programmes, including EDP)

#### TUESDAY 9 MARCH

**08:30 – 11:00** Arts and Social Sciences

**Please note the above schedule is conditional and assumes that the current COVID-19 regulations will not change, and no changes may become necessary to mitigate any associated risks.**

## EXTENDED DEGREE PROGRAMMES

Extended Degree Programmes (EDPs) offer selected students the opportunity to strengthen their study base with a view to ultimate success.

Faculties that offer Extended Degree Programmes are:

- AgriSciences
- Economic and Management Sciences
- Engineering
- Arts and Social Sciences
- Science

See contact details below for any questions regarding the Extended Degree Programmes.

All first-years participate in **early assessment**. To this end, you will complete a form of assessment in all first-year modules in the first six weeks of the academic year in order to form an early impression of your academic progress. Therefore, it is important that you give your studies your full attention from the outset, so that Early Assessment offers a true reflection of your progress.

**Please note:** Students who are following an Extended Degree Programme register in faculty context on either **Monday 27 or Tuesday 28 January**. (Please consult the notice on registration that will be sent to you separately by the University Registrar.)

### General enquiries

**Me/Ms Claudia Swart-Jansen van Vuuren**

*claudias2@sun.ac.za*  
021 808 4502

### AgriSciences

**Dr Natasja Brown**

*nbro@sun.ac.za*  
021 808 2015

### Economic and Management Sciences

**Me/Ms Ilze Gelderblom**

*ilzeg@sun.ac.za*  
021 808 9525

### Engineering

**Me/Ms Avril Ford**

*aford@sun.ac.za*  
021 808 3614

### Arts and Social Sciences

**Dr Anita Jonker**

*axjonker@sun.ac.za*  
021 808 2081

### Sciences

**Me/Ms Aatika Valentyn**

*aatika@sun.ac.za*  
021 808 3063

## ONLINE ONBOARDING PROGRAMME



## DID YOU KNOW?

Stellenbosch University will be offering an online onboarding programme for all provisionally accepted first years during February 2021. Everything you need to know about SU and your faculty is just a few clicks away!

The programme is available on SUNLearn (the University's learning management system). This is where you will be spending a lot of time as a student, so this is an effective way to familiarise yourself with the platform. The following topics (apart from the faculty-specific information) are explained:

**Making the most of my 24 hours** (time management)

**Rocking university life** (success and well-being)

**Go with the flow** (stress management)

**Ace your studies** (exam and study skills)

**Money matters** (financial literacy)

**Speak, listen, read, and write like a pro** (academic writing, reading, etc)

**Be the best student you can be** (I-FlourishWell4Life programme)

In an extended question and answer section you will be able to search for the answer to many of the questions you may have about SU and even post your own. Videos of students sharing ways to cope at university, a virtual campus tour, and info on available support are easily accessible.

Please e-mail Annie Burger at [annieburger@sun.ac.za](mailto:annieburger@sun.ac.za) if you have any questions about the onboarding programme.

SCAN HERE



# TRANSPORT ON SU CAMPUSES

Get from point A to point B in and around campus without using motor vehicles. This reduces carbon emissions which are detrimental to the environment. There is also definitely not enough parking space available for all the vehicles.



## Walk

Along various pedestrian routes.



## Cycle

Use a Matie Bike or your own bicycle. Register for free to access SU bicycle sheds by sending an e-mail to [fiets\\_bike@sun.ac.za](mailto:fiets_bike@sun.ac.za).



## Join an existing lift club

Or create your own lift club.

*You will save money and protect the environment, and won't have to search for parking on campus.*



## Parking

Parking is limited. If you have no other alternative than motor vehicle transport, please apply for access to parking.

## TRANSPORT ON STELLENBOSCH CAMPUS



## Use the campus shuttle

Various shuttle services are available. Make sure you choose the right one.

### Day shuttle:



Operates from Monday to Friday between 07:00 and 17:30.

Fixed times and routes, with fixed pick-up and drop-off points as indicated on the website below.

Between general parking areas on periphery of campus and central campus.

### Evening shuttle:



For students who study until late at night. Operates from Monday to Sunday on the hour between 18:00 and 02:00.

From the main entrance of the Neelsie, within a 6 km radius to private housing in the broader town.

NB: Book your trip online at [www.sun.ac.za](http://www.sun.ac.za) > My.SUN > Services > Reservations: Shuttle Service

## TRANSPORT ON TYGERBERG CAMPUS



## Walk

Along various pedestrian routes.



## Join an existing lift club

Or create your own lift club.

*You will save money and protect the environment, and won't have to search for parking on campus.*



## Shopping centre shuttle service

The shuttle runs to a nearby shopping centre at fixed times.

Book your trip at [www.sun.ac.za](http://www.sun.ac.za) > My.SUN > Services > Reservations: Shuttle Services.



## Parking

Parking is limited. If you have no other alternative than motor vehicle transport, please apply for access to parking.



UNIVERSITEIT  
iYUNIVESITHI  
STELLENBOSCH  
UNIVERSITY

100  
1918 - 2018

Visit [www.sun.ac.za/mobility-shuttles](http://www.sun.ac.za/mobility-shuttles)

## NOTES

A series of horizontal dotted lines for taking notes.