



GUIDE FOR **NEWCOMERS**



UNIVERSITEIT
iYUNIVESITHI
STELLENBOSCH
UNIVERSITY

100
1918 · 2018

2019

saam vorentoe | masiye phambili | forward together



Have you saved this on your cell phone?

EMERGENCY NUMBERS: STELLENBOSCH CAMPUS

CSCD 24-Hour Crisis Service	010 205 3032 / 082 557 0880
Student Communities (CSC)	021 808 2848
Risk Management and Campus Security:	
• Ops Room for general enquiries and the reporting of risks	021 808 4666
• 24-hour Emergency Line for the reporting of serious incidents and danger	021 808 2333
The Ombudsman	082 807 2994
Police Flying Squad	10111
Ambulance	084 124 (ER24) 082 911 (Netcare)
Medi-Clinic 24-hour emergency unit	021 861 2000

IMPORTANT NUMBERS: STELLENBOSCH CAMPUS

All Enquiries / Client Services	021 808 9111
Academic Affairs Council (AAC)	021 808 2493/2491
Admissions	021 808 9111
Bursaries and Loans	021 808 9111
Campus Health Services	021 808 3494/3496
Cape Institute for Agricultural Training: Elsenburg	021 808 5453
Centre for Student Communities (CSC)	021 808 2848
Centre for Student Counselling and Development (CSCD)	021 808 4707
Centre for Student Leadership and Structures (CSLS)	021 808 2312
Centre for Student Recruitment and Career Advice (CSRC)	021 808 4709
Connect office	021 808 3632
Corporate Communication	021 808 4977
Facilities Management	021 808 4666
Language Centre	021 808 2167
Library Enquiries	021 808 4883
Maties Sport	021 808 4642
Ombudsman	082 807 2994
Prim Committee	021 808 2493/2491
Risk Management and Campus Security	021 808 4666
Social worker	021 808 4994
Societies Council	021 808 2493/2491
Student Affairs	021 808 4585
Student Fees	021 808 4521
Stellenbosch Student Representative Council (SRC)	021 808 2493/2491
SU Gymnasium	021 808 4428

EMERGENCY NUMBERS: TYGERBERG CAMPUS

CSCD 24-hour Crisis Service	010 205 3032 / 082 557 0880
Student Communities (CSC)	021 808 2848
Risk Management and Campus Security	021 938 9507
The Ombudsman	082 807 2994
Police Flying Squad	10111
Ambulance	084 124 (ER24) 082 911 (Netcare)
Poison Information Centre	086 155 5777
Tygerberg Hospital	021 938 4911

IMPORTANT NUMBERS: TYGERBERG CAMPUS

All Enquiries	021 938 9111
Academic Affairs Council (TAAC)	021 938 9591
Admissions	021 938 9378
Bursaries and Loans	021 938 9458/9129
Campus Health Services	021 938 9590
Centre for Student Counselling and Development (CSCD)	021 938 9590
Deputy Registrar	021 938 9379
Library Enquiries	021 938 9368
Marketing Office	021 938 9202
Maties Sport	021 938 9468
Ombudsman	082 807 2994
Prim Committee	021 938 9591
Risk Management and Campus Security	021 938 9507
Student Affairs	021 938 9461
Student Council	021 938 9591
Student Recruitment and Support Office	021 938 9789/9461
Tygerberg Gymnasium	021 932 2888
Tygerberg Hospital	021 938 4911

CONTENTS

STUDENT AFFAIRS	2
Students with disabilities	2
The welcoming period at SU	3
What is a cluster?	4
What is a PSO?	5
PSO transport service during welcoming	5
Centre for Student Counselling and Development	6
Campus Health Service	7
Students' Representative Council 2018/2019	9
Academic Affairs Council	9
Societies	9
Prim Committee	9
Languages of tuition at Stellenbosch University	10
Notice regarding social media	11
Insurance: Students and their property	11
Free writing advice	11
Construction on campus	12
Welcoming Champions	12
National Benchmark Test	12
Pre-registration of international degree students	13
Library	13
Maties Sport	14
SU cares for the environment	15
Computer User Areas	16
CUA-Information	17
Take your safety seriously	17
Two options to register as a student	18
Registration schedule 2019	18
Extended Degree Programmes	19
Parent's introduction to faculties	20
FACULTY PROGRAMMES	21
AgriSciences	22
Engineering	23
Economic and Management Sciences	24
Arts and Social Sciences	25
Law	26
Theology	27
Medicine and Health Sciences	28
Science	30
Education	31
Parking	32
Transport on SU campuses	33
Tygerberg campus map	35
Stellenbosch campus map	36



@stellenboschuni @sustudentaffairs

Published by Corporate Communication in conjunction with
Division Student Affairs, Stellenbosch University

Editor: Maretha Joyce
Design: Edward Mitchell
Printing: African Sunmedia

STUDENT AFFAIRS

Welcome to Stellenbosch University (SU). It will be an exciting new chapter in your life and we are happy to be part of your journey. Partake and contribute to every event and training opportunity that the SU has to offer, and use the available support services and development opportunities to make a success of your studies.

The Division Student Affairs (DSAf) plays a key role in facilitating an engaging and supportive environment that is conducive to student success.

The Division consist of three centres, namely the Centre for Student Communities (CSC), the Centre for Student Counselling and Development (CSCD) and the Centre for Student Leadership and Structures (CSLS). Furthermore, the Division Student Affairs is responsible for the coordination of welcoming new students.

Your cluster, residence or PSO will play an important role in how you take part and experience Stellenbosch. It must first be a place where you find ways of feeling at home and where you can engage with your academic activities in a focused way. Each residence and PSO has a residence head or PSO coordinator, a House Committee (HC) and a group of mentors to support you, and all of these peers and staff members form part of a cluster where a ResEd coordinator is the head who guides you and fellow students in how to create supportive communities.

The welcoming programme is a fully integrated programme with academic, social as well as general aspects in the pursuit of a common goal – to let new students as soon as possible feel at home in their new environment and prepare them for successful study. Through this programme, we want every new student to have a meaningful and memorable welcoming – hence our dedicated pursuit and practice of the welcoming values of hospitality, friendliness and dignity.

We trust that your experience as a new student will be positive, enriching and unforgettable. Always remember that you have come here to be academically successful. As you pursue this part of your academic journey, choose from the menu of activities those that will contribute to your positive growth, academic success and total learning experience. And remember, we are all in this community together.

General contact details:

Address: 15A Bosman Street, Stellenbosch

Tel: 021 808 9111

Email: studentaffairs@sun.ac.za

Visit: www.sun.ac.za/studentaffairs



@SUSStudentAffairs



STUDENTS WITH DISABILITIES

INFORMATION SESSION FOR STUDENTS WITH DISABILITIES AND THEIR PARENTS/GUARDIANS:

Students who have diagnosed disabilities that may need academic or social support can attend this session. Academic concessions such as extra writing time will also be discussed. You are invited to attend this information session to determine what support is available at the University during your studies. This excludes information regarding the National Benchmarking Tests (contact www.nbt.ac.za or 021 650 3523).

Stellenbosch students and their parents/guardians

Date Thursday 24 January, 12:30 – 15:00
(walk-in session)

Venue Room 357 (3rd floor), Arts and Social Sciences Building, corner of Merriman Avenue and Ryneveld Street

EXTRA WRITING TIME (STELLENBOSCH CAMPUS)

Please note The cut-off dates for applications for extra writing time for tests and examinations are: 18 February; 11 March; 8 April; 6 May; 19 August and 7 October (expect a response within 10 work days after each cut-off date).

Enquiries Examination Office, Admin A (no 1 on the map), Tel 021 808 9111 or email skryftyd@sun.ac.za. Application forms are available at www.mymaties.com (exam and test information).

EXTRA WRITING TIME (TYGERBERG CAMPUS)

Please note Due to different time-tables, cut-off dates do not apply.

Enquiries Examinations Office, Ms Desireé Petersen, Tel 021 938 9142, Room 1048, Clinical Building (no 3 on the Tygerberg map).

THE WELCOMING PERIOD AT SU

your key to success



UNIVERSITEIT
iYUNIVESITHI
STELLENBOSCH
UNIVERSITY

100

1918 · 2018



CONGRATULATIONS ON YOUR ADMISSION TO STELLENBOSCH UNIVERSITY!

We know you are not only coming here to get a degree, but also to enjoy this exciting period in your life to the full, and we are looking forward to receiving you on campus. Please read through this letter to get an idea of what to expect at Stellenbosch when you arrive on campus.

WHY HAVE A WELCOMING PROGRAMME?

The welcoming programme introduces you to your residence, private student organisation (PSO), cluster and faculty so that you can find your feet in your new environment quickly. During the introduction to your residence or PSO you will meet the communities that you can join. Even though you will meet many first-year students in your residence or PSO during the welcoming period, your cluster in particular will open up new worlds and expose you to even more first-year students who might share the same values and interests as you. You will visit the faculties together, so by the time you attend your first class there should be a few familiar faces already. The introduction to your faculty will equip you for the start of your academic career. By following your faculty's programme carefully you will ensure that you are ready for your first day of class.

Therefore, use the exciting welcoming period as an opportunity to think critically about your environment, fellow students and leaders.

Be the first to ask questions such as:

- Do the activities in the welcoming programme contribute to your development and preparation for the academic year ahead?
- Does the welcoming period expose you to a positive environment and positive relationships?
- Does the welcoming period offer you a chance to fully live out your values and interests?
- And particularly: Does the welcoming period help you to become the person you have always wanted to be?

WHAT MAKES UNIVERSITY LIFE SO UNIQUE?

Now that you know what to expect of the welcoming, you also need to know what not to expect: a repetition of your school experience. University is a whole new ball game. University gives you an opportunity to expand your world and to discover and exploit countless possibilities. Whether you have just completed grade 12, or already have a gap year behind you, you can rest assured that your university experience will be incomparable with anything else. University is not only there to ensure that you grow academically, but also gives you a chance to explore other facets of your life. Here you will have the freedom to choose your friends and role-models, and to try out activities that you may not have encountered before.

Who knows, this might just be the beginning of an unforgettable journey of discovery! As long as you are prepared to work hard to make your dreams come true, you have the potential to be anything you want to be. Here you will have an opportunity to find your own voice so that you can participate in critical conversations on campus. By now you have probably heard a lot about what you can expect from your first few days at university, but this is an opportunity for you to form your own ideas about the welcoming period. Remember, you do not have to accept everything passively; rather think critically about your experience of the welcoming programme.

HOW CAN YOU MAKE IT UNIQUE FOR YOURSELF?

At Stellenbosch we believe that students are our knowledge partners. Your success at university therefore lies in your hands. Success at university does not, however, only mean successful completion of your studies, but also that you have grown and developed as a human being.

You have the opportunity to address the following critical questions to yourself and to your fellow students:

- What is important to you?
- Which aspects of yourself are you most keen to develop?
- Besides a degree, what else would you eventually like to leave with?
- What contribution would you like to make in your community?

You do not have to wait until 'one day'; start making a difference today! Embrace every opportunity to create memories with new and old friends and to learn new skills, even outside the lecture halls. Explore the world around you, but do not lose sight of the bigger picture. University is not only there for getting a degree or enjoying being young, but is also a chance to test your boundaries in a responsible manner and to broaden your horizons.

We hope you are looking forward to your time at Stellenbosch, because we are very excited about joining you on this journey.

**Embrace every opportunity
to create memories
with new and old
friends and to
learn new skills,
even outside the
lecture halls.**

WHAT IS A CLUSTER?

ALL STELLENBOSCH CLUSTERS WILL MEET ON SATURDAY 26 JANUARY FROM 09:00 – 13:00

Newcomer students join a campus that has been organised into listening, learning and living communities (LLL). All the clusters, residences, Private Student Organisations (PSOs), mentor groups, tutor groups and the listening, learning and living houses for senior students form part of LLL. The purpose of LLL is to integrate the out-of-class experience with the in-class experience to ensure academic success and a well-rounded education for students.

CLUSTERS

A cluster is made up of a number of residences and one or two PSO communities. Clusters play a significant role in the integration and support of new students on campus and ensure that students experience the University as a caring and nurturing place. They also integrate the university experience of residence students and students in private accommodation. Clusters are increasingly used as a way of organising the University, for example, faculties tend to use clusters as a basis on which to form subject tutor groups. The residences and the PSOs belong to one of six clusters on Stellenbosch campus. Tygerberg campus forms a seventh cluster.

MENTORS

Mentors are senior students who are appointed in residences and PSOs to assist new students with their adjustment to university life. Each new student should have access to a mentor. The mentor already plays an important role during the welcoming period with general assistance regarding university life queries and psychosocial support. Through the mentor, the new students have the opportunity to partake in the wellness programme of the University, which aims to enhance the wellness of students throughout the year. When you arrive at your residence or PSO, a mentor should be allocated to you. Should you not be allocated a mentor, or have any queries, please contact Client Services at tel 021 808 9111 or info@sun.ac.za.

CLUSTER MEETING (STELLENBOSCH CAMPUS ONLY)

Newcomer students meet from 09:00 – 13:00 on Saturday 26 January in their clusters to learn how their social integration at the University could support their academic success. Students will meet others in their cluster who follow the same programmes and learn how they could become involved in the ResEd initiative as well as how their mentors could assist them. In addition, they will be introduced to the academic support groups at the University, such as the Academic Affairs Council (AAC).

COMPOSITION OF CLUSTERS

amaMaties	Capri, Equité, Erica, Helderberg, Huis Neethling, Nemesia and Serruria
Rubix Tygerberg	Heemstede, Metanoia, Nerina, Pieke and Venustia Hippokrates, Huis Francie van Zijl, Kerkenberg, Meerhoff, Nkosi Johnson House, Ubuntu House and Osler
Validus	Academia, Concordia, Goldfields, Huis MacDonald, Huis Marais, Huis Visser, ISA, Lobelia and Nooitgedacht,
VicMeyr	Aurora, Dagbreek, Huis ten Bosch, Lydia, Majuba and Minerva
Victoria	Harmonie, Huis de Villiers, Monica, Oude Molen, Silene and Wilgenhof
Wimbledon	Aristea, Eendrag, Helshoogte, Irene, Russel Botman House, Sonop and Vesta



WHAT IS A PSO?

One of Stellenbosch University's key focus areas for student development is the co-curricular and the out-of-class experience. The Private Student Organisations (PSOs) have been positioned in order to fulfil this need and to give students the opportunity to have a wholesome and diverse University experience. All students who do not make use of the university's residence accommodation are automatically members of a PSO – approximately 70% of the University's students. These students are divided in different PSOs which provide them with all the opportunities for successful social and academic integration on campus.

The PSO community does not provide accommodation for members, but amongst others PSO students can use their student cards to book and enjoy meals at a specific residence in their particular cluster. The PSO assigns a mentor to each new student who can assist them with all these processes.

There are ten PSOs on Stellenbosch campus and one on Tygerberg campus. New students are divided into a PSO in accordance with the University's placement policy. Students are notified about their PSO

allocation via email and will also receive information regarding their PSO's welcoming programme as well as their meeting points during welcoming. The PSOs are jointly managed by the PSO Office which is situated within the Centre for Student Communities in the Division Student Affairs. Students are not permitted to change PSOs and as such their allocation remains for the duration of their University journey.

The PSO to which a student has been allocated also determines the cluster to which that student belongs to. Should you not receive any notification of your PSO allocation, please contact Client Services on tel 021 808 9111 or info@sun.ac.za. Students are also encouraged to familiarise themselves with the compulsory PSO fees as depicted annually in the Stellenbosch University Student Fees Booklet.

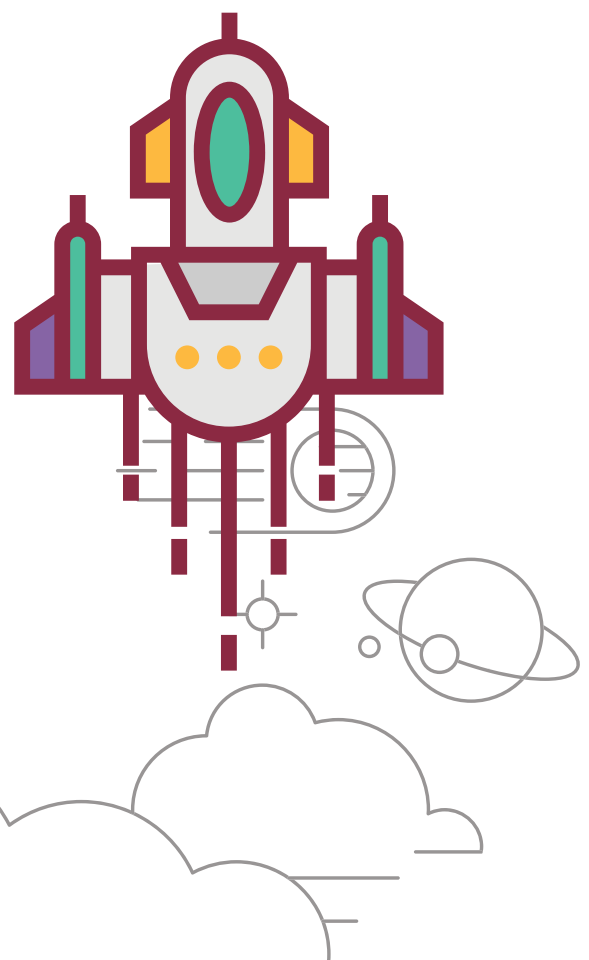
PSO TRANSPORT SERVICE DURING WELCOMING

Students who are allocated to Private Student Organisations (PSOs) are encouraged to take part in the welcoming programme of their specific PSO. As the programmes end in the evening, a free transport service is available to all PSO students to ensure they get home safely. The transport service leaves at exactly 19:00 and 21:00 from the PSO Hub, 11 Bosman Street, Stellenbosch and will get students safely to their homes in Stellenbosch and specifically indicated drop-off points in surrounding areas.

The drop-off points where students will be taken to, are the following:

- SAPS Offices: Bellville, Kuils River, Athlone, Mitchells Plain, Paarl, Somerset-West and Kayamandi
- De Zalze Golf Estate, Stellenbosch (gate)
- Paradyskloof, Stellenbosch (Engen garage)
- Sonnebloem Rd, Idasvallei, Stellenbosch (Brent Oil garage)
- Welgevonden Estate, Stellenbosch (gate)
- 87 Lang Street, Cloetesville, Stellenbosch (Engen garage)
- Stellenbosch central area, Stellenbosch

This service is only available during the welcoming period (23 January – 02 February). Students must please indicate beforehand, by 18 January, whether they would be using this service, as well as indicate the specific drop-off point. Please let your respective House Committee or the PSO office at psos@sun.ac.za know.



CENTRE FOR STUDENT COUNSELLING AND DEVELOPMENT

The Centre for Student Counselling and Development (CSCD) is committed to providing the Stellenbosch University (SU) community with psychological, developmental and support services in our quest to be partners for success. Our vision is to be a centre that is approachable, inclusive and client-centred, with our values based on shared humanity. The staff includes psychologists (clinical, counselling, educational), a social worker, psychology interns, student assistants, project/portfolio coordinators, a psychometrist, support officers and administrative staff. The CSCD consists of five units that through their core functions endeavour to promote citizenship by facilitating wellness, personal agency and sustainable equity.

Address: 37 Victoria Street, Stellenbosch

Tel: 021 808 4707 / 021 808 4994

Second floor, Student Centre, Tygerberg

Tel: 021 938 9590

Website: www.sun.ac.za/cscd

24-hour crisis service: 010 205 3032 / 082 557 0880

The following units are housed in five centrally situated buildings in Victoria Street:

EQUALITY UNIT (EQU)

The Unit promotes collective action towards social justice and discourse regarding social asymmetries at SU. We also coordinate, educate and raise awareness around sexualities, gender, HIV/Aids, and anti-discrimination in partnership with relevant campus structures.

Apart from the coordination and implementation of SU's policies on Unfair Discrimination and Harassment and HIV/Aids, the Unit also plays a leading role in dealing with issues related to gender non-violence and the LGBTQI community. We serve as a centralised one-stop service for students and staff managing accounts of unfair discrimination, sexual harassment and harassment. The EqU offers walk-in services at Simon Nkoli House (39 Victoria Street) including free, quick and confidential HIV testing and counselling (email hiv@sun.ac.za for more information) or to lodge unfair discrimination-based matters (email unfair@sun.ac.za for more information). Our telephone number is 021 808 3136.

Should you experience any form of unfair discrimination, sexual harassment or victimisation from fellow university students or staff, you are encouraged to provide an official complaint report of the incident through the walk-in service or unofficially via unfair@sun.ac.za.

Please follow us on Facebook and Twitter (@MatieSURpass) for updates and to keep in touch with us.

UNIT FOR ACADEMIC COUNSELLING AND DEVELOPMENT (UACD)

The Unit renders a development-directed service focusing on the academic challenges students may experience. The team comprises of educational psychologists, a psychometrist, as well as intern psychologists. Support is provided to students with regards to study methods,

coping with test and examination stress, time management and the optimisation of their potential by means of individual consultations, work sessions and self-help material. Career counselling for registered students are also available.

UNIT FOR PSYCHOTHERAPEUTIC AND SUPPORT SERVICES (UPSS)

The Unit offers individual, group therapy and work sessions. Confidential and professional services are offered. The Unit offers psychotherapy for a broad spectrum of problems that students experience, namely: depression, high stress levels, adjustment problems, substance abuse, relationship or family problems, etc.

The Unit has implemented screening sessions for the Stellenbosch campus students only to facilitate students who are experiencing psychological challenges. This service is offered daily from 11:00 – 12:30.

A 24-hour crisis service is also available for registered students from 16:00 – 08:00 as well as weekends.

Social Services (Social Worker) in collaboration with the Centre for Student Communities offer a walk-in programme that assist mainly first-year students who live outside of the Western Cape Province and arrive on campus with no confirmed accommodation and provide financial aid advice during the welcoming period. During the academic year, the social worker provides professional services such as support, guidance and counselling to students with respect to their social issues.

DISABILITY UNIT (DU)

The Unit offers various services to students with disabilities. These services could include making texts accessible, processing of test and exam concessions and advising on residence placement. We also advise on innovative academic support, which includes assistive technology. Disability work sessions are also presented for staff and students to raise awareness around disability. For any disability-related information, contact us at disability@sun.ac.za. Follow us on the Student Affairs Facebook page as well as Twitter: @sudisabilityupdate.

UNIT FOR GRADUAND CAREER SERVICES (UGCS)

The Unit provides student support with the transition from education to employment. This could include individual sessions about your career; work sessions on CV writing, interview skills, your on-line profile and exposure to network opportunities with companies via career fairs and assistance with job-searching methods.

The UGCS has a new career services management system called MatiesCareers, which provides students with an easy way to search and apply for vacancies, internships, part-time work and volunteer opportunities. MatiesCareers will provide them with information about the career fairs and work sessions facilitated by the unit, affording them an opportunity to register and RSVP online. Students can also upload CVs for potential employers, search and view employers and stay connected with the Unit.

CAMPUS HEALTH SERVICE

The Stellenbosch University Campus Health Service (CHS) offers an integrated and accessible health service for students and staff and has an equipped dispensary for this service. CHS supports the wellness initiative for students and staff and are provided at the Stellenbosch and Tygerberg campuses.

QUICK QUESTIONS ABOUT CHS:

IS THIS SERVICE FREE?

Services delivered by our medical doctors and physiotherapists are charged at the minimum ethical tariff. All consultations delivered by our professional nurses are free of charge. A fee is charged at medical aid tariffs for medication.

HOW ARE SERVICES PAID FOR?

We are a registered provider of all medical aids in South Africa and Namibia and all accounts are sent electronically. We accept cash, card and electronic payments as well. Medical aid rates apply.

DOES CHS COVER ALL MEDICAL SERVICES (E.G. X-RAYS AND DENTISTRY)?

We have professional medical doctors, physiotherapists and nurse practitioners. All other services are referred.

MUST I BE IMMUNISED?

Being up to date with all vaccinations is an important consideration for all students (especially first years living in residences). The following vaccinations are all optional, but highly recommended:

- Influenza (flu) – annual vaccination
- Meningitis – one injection every 3 years
- Measles, Mumps and Rubella (German Measles) – if non-immune, series of 2 vaccines, 1 year apart
- Hepatitis A and B – **compulsory for Medicine and Health Sciences students**; combination (Twinrix) available, series of 3 vaccines over 6 months
- Human Papilloma Virus – series of 3 vaccines over 6 months

All vaccines are available at CHS and prices are available upon request. Please check with your medical aid if they pay for vaccinations.

DOES CHS OFFER COUNSELLING?

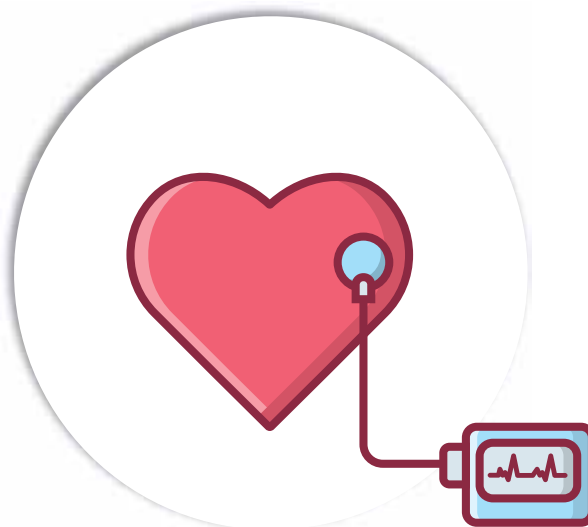
We offer counselling to patients who come for specific screening/test e.g. HIV testing and family planning. Other counselling is given by the Centre for Student Counselling and Development (CSCD). Their contact number is 021 808 4707.

IS PATIENT TRANSPORT AVAILABLE?

We offer transport to patients in the confines of the campus. The patient can contact Campus Health Services directly.

HOW DO I MAKE AN APPOINTMENT?

Appointments can be made by contacting us on the numbers indicated on this page or at our practice.



WHAT IF I HAVE AN EMERGENCY?

During office hours you can contact CHS. Alternatively for emergencies:

During office hours:

CHS emergency number, tel 076 431 0305

After hours or weekends:

ER24 emergency number, tel 010 205 3032

Stellenbosch Medi-Clinic, tel 021 886 9999 or 021 861 2000

SU 24-hour crisis line, tel 082 557 0880

Contraception helpline, tel 0800 246 432

HIV Helpline, tel 0860 HIV 911

For more information go to:

Website: www.sun.ac.za/english/CampusHealth

Facebook: www.facebook.com/Stellenbosch.University.CHS

Twitter: @CHS_StellUni

All our practices are open from Monday to Friday between 08:00 – 17:00.

Physiotherapists

Tel: 021 808 3392

Next to the gymnasium in the Sport Science building
(no 84 on the map)

Stellenbosch practice

Tel: 021 808 3496/3494

7 Claassen Street (no 16 on the map)

Tygerberg practice

Tel: 021 938 9590

3rd Floor, Tygerberg Student Centre (no 10 on the map)

STUDENTS' REPRESENTATIVE COUNCIL 2018/2019



Secretary General
Leighton September
leighntonseptember@sun.ac.za



Vice Chairperson
Alex van Greuning
alexvang@sun.ac.za



Chairperson
Carli van Wyk
carlivwyk@sun.ac.za



Treasurer
Lauren Stevenson
laurens@sun.ac.za



Strategic Initiatives and Leadership
Lethiwe Mbatha
lmbatha@sun.ac.za



Student Wellness and Post Graduates
Melt Hugo
melthugo@sun.ac.za



Communications Officer and Transformation
Tariq Khan
tariq@sun.ac.za



Policy Officer
Mariné Bothma
mbothma@sun.ac.za



Student Access
Mthunzi Matshabane
mthunzim@sun.ac.za



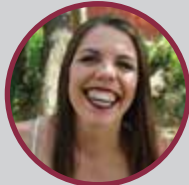
Chairperson of Societies Council
Alchadvon Fransman
alchadvon@sun.ac.za



Chairperson of Academic Affairs Council
Eduard Beukman
eduard@sun.ac.za



Chairperson of Prim Committee
Paulu Joubert
paulu@sun.ac.za



Vice Chairperson of Prim Committee
Jané Fourie
fouriej@sun.ac.za



TSR Chairperson
John Kachoko
tsrchair@sun.ac.za



MASC Captain
Thembeka Myeko
thembimthembeka@gmail.com



Website: www.sun.ac.za/src
Office: 3rd Floor Neelsie
Tel: 021 808 2491/93
Email: sr@sun.ac.za



TYGERBERG REPRESENTATIVE COUNCIL 2018/2019

Financial Manager
Ruhann Botha
19790864@sun.ac.za

Student Development
Salathiso Mazaleni
21072574@sun.ac.za

Tygerberg Societies Council
Lynette Classen
19795858@sun.ac.za

Secretary/Sustainability
Sinethemba Toyo
18541003@sun.ac.za

Chairperson
John Kachoko
19173695@sun.ac.za

Media and Marketing
Samukelisiwe Mthembu
19908555@sun.ac.za

Tygerberg Academic Affairs
Ilana van Niekerk
tabrchair@sun.ac.za

Vice Chairperson
Ntsako Mtileni
19804660@sun.ac.za

Sport/Social Impact
Louiso Du Pisanie
19098634@sun.ac.za

Tygerberg Prim Committee
Cebolenkosi Mbhele
19831560@sun.ac.za

Student Wellness
Nqaba Mngomezulu
18955339@sun.ac.za

Student Services
Vukosi Baloyi
18294359@sun.ac.za

Tygerberg Post - Graduate Student Council
Lynette Classen
tpscchair@sun.ac.za



STUDENTS' REPRESENTATIVE COUNCIL 2018/2019

The Students' Representative Council (SRC) of Stellenbosch University is responsible towards representing and assisting all students during welcoming, the registration period and during their term of office. We are fortunate to have within our ranks students who serve on all the student leadership structures within the university, enabling us to ensure student success holistically.

- The SRC participate actively in the welcoming programme by recruiting and training students to act as SRC assistants to assist all students with inquiries.
- The SRC support all students who are unable to either pay the initial residence fee or who have historical debt and cannot afford to register for the academic year. This falls within the Register All project which contains a fixed amount allocated within the SRC's budget.
- The SRC, the Academic Affairs Council (AAC), Societies Council and the Prim Committee (PC) collaborate throughout the

welcoming programme to ensure that all students are well informed and supported leading up to the first academic day.

- The SRC and the AAC, assist students who are academically excluded and those who are awaiting appeal notification during January. Students are welcome to visit the SRC office for any support during this time to ensure that student success and wellbeing are promoted.
- The SRC and the PC ensure that students who have not been placed in residences and are struggling to find accommodation will be given temporary accommodation during the welcoming period.

The SRC represent all students as the highest student representative and decision-making body of Stellenbosch University. The SRC envisions a progressive and thriving community with student success at its core. "We are excited to welcome you to our beautiful campus."

ACADEMIC AFFAIRS COUNCIL

The primary responsibility of the Academic Affairs Council (AAC) is to represent and protect your academic affairs and development as a student.

This includes:

- Academic complaints
- Language issues
- HEMIS
- Test or timetable clashes

- Plagiarism issues
- Problems with lecturers, mentors, tutors or tut classes
- Co-curricular development

If you have any problems affecting your academics, we are the ones you want to talk to. Contact us or visit our Facebook page: <https://www.facebook.com/abrstellenbosch> for more details. Or send an email to the chairperson, Eduard Beukman at eduard@sun.ac.za.

SOCIETIES

The societies at Stellenbosch University make up the largest and most diverse out-of-class activities on campus. This means just about everything from dancing to community work, from sexuality to religion and from nationalities to debating!

The societies offer you everything you could want to have outside of class:

- it is a way to meet new people and make friends with others that have the same interests as you;
- it give an outlet to your passions, whether for animals, children, people, philosophy or community interaction;

- gain new skills and run courses to further yourself; and
- join a community that can offer you friendship and support.

Visit our website at <http://www.sun.ac.za/english/students/student-societies> or send an email to the chairperson, Alchadvon Fransman at alchadvon@sun.ac.za for more information.

Remember to visit the Societies fair on **Friday 25 January** as well as in February.

PRIM COMMITTEE

The Prim Committee (PC) is made up of the Primarii of the 41 student communities on campus; which includes residences and private student organisations (PSOs). The PC functions as a leadership collaboration committee whereby the Prims from the various communities discuss events and topics relevant to the houses and campus. The PC has a chairperson representing the residences as well as a co-chairperson representing the PSOs; who both have seats on the SRC and who works with the Centre for Student Communities to ensure student community's leadership functions optimally.

You – yes, you! – are represented on the PC through the Prim in your student community, so make sure that you take any questions, issues, and concerns that you may have to the leadership within the residence or PSO you are a part of. If there is anything that your community leadership cannot solve you are welcome to contact the PC chair, Paulu Joubert, at paulu@sun.ac.za, or the PC PSO co-chair, Jané Fourie, at fouriej@sun.ac.za.

Make the most of being part of a supportive student community during your time at Stellenbosch University and seize all the opportunities that will come your way!

LANGUAGES OF TUITION AT STELLENBOSCH UNIVERSITY

Stellenbosch University (SU) is committed to knowledge exchange in a diverse society and, through its Language Policy, seeks to extend fair access to SU to all students and staff. Multilingualism is an important differentiator for SU, where Afrikaans, English and isiXhosa are used in academic, administrative, professional and social settings. More information on language usage at SU is available on the website at www.sun.ac.za/language.

LANGUAGE POLICY

Stellenbosch University accepted a new Language Policy in 2016. This policy and the language implementation plans that go with it have been implemented since the beginning of 2017.

Every faculty compiles its own Language Implementation Plan. The policy and plans will ensure that no student who has yet to master Afrikaans or English on an academic level will be excluded from academic tuition.

WHAT CAN YOU EXPECT?

For undergraduate modules, Afrikaans and English are the languages of teaching and learning, and are used in a combination of the following modes:

- Facilitated learning opportunities (lectures, tutorials and practicals)
- Learner support via information and communication technologies (ICTs) such as video or audio recordings (podcasts)
- Real-time interpreting of some lectures.

Where classes are large, an effort will be made wherever possible to offer separate lectures in Afrikaans and English. When students from both language groups are studying the same module, both groups will participate in group work, class assignments, tutorials and practical sessions, the aim being to stimulate frank debate and a diversity of ideas and viewpoints.

Where Afrikaans and English are used in the same lecture, all information will be conveyed in at least English, with a summary or notes of key points in Afrikaans as well. Questions will at least be answered in the language in which they are asked. In your first year, real-time interpreting will be another possible form of support where practical. In some sessions, for example field work or computer literacy, interpreting would not be feasible. In your second and subsequent years, interpreting could be provided at the request of your faculty.

Undergraduate lectures may only be offered in one language when the learning material warrants this, the lecturer concerned can only teach in that language, or the class votes unanimously for one language. For first-year students at least, real-time interpreting into the 'other' language will be available.

- The language mode for each of your academic modules will be explained in the module framework concerned, as well as on your faculty's webpage.

THE SUPPORT YOU WILL RECEIVE

Further support in Afrikaans or English is available to students through consultations during office hours, scheduled tutorials and practicals,



ICT-supported learning (audio and video recordings), and the services of the Language Centre.

All compulsory reading material will be provided in English and, except for published material, also in Afrikaans. SU's module frameworks and study guides will still be available in English and Afrikaans. In undergraduate modules, question papers for tests, examinations and other assessments will be prepared in Afrikaans and English, and students may complete all assessments and written work in Afrikaans or English. The multilingual model supports Afrikaans first-year students who have not yet mastered academic English. In their final year of study, through the academic support that is available, these students should be able to participate nationally and internationally.

HELP EACH OTHER TO SUCCEED

The Language Policy is not ideologically motivated. It does not accord any special status to any of South Africa's official languages, and the language allocation is not based on a given percentage of lecture time per language. SU believes that multilingualism is an additional asset for any graduate. The intention is rather to use the languages of tuition in practical ways that will ensure no one is excluded from knowledge, that no one language is forced on students, and that students are encouraged to learn additional languages.

The implementation of multilingualism is complex and there is no universal quick fix. The language proficiency of a particular group of students is the biggest variable – it will differ from module to module, and from year to year. Therefore language application should be flexible to adapt to changing needs. Feedback to lecturers is important. Share examples of successful language implementation and make suggestions for improvement with a positive and helpful attitude.

Where students believe that language usage is jeopardising their study success, or that they are being excluded from the academic offering on the basis of the language of tuition, the matter can be taken up in the department or faculty, or through the faculty's representatives on the Academic Affairs Council that operates under the auspices of the Students' Representative Council. If the matter cannot be satisfactorily resolved through the internal processes, students can approach the university ombud at ombud@sun.ac.za.

NOTICE REGARDING SOCIAL MEDIA

IMPORTANT NOTICE REGARDING THE USE OF SOCIAL MEDIA BY STELLENBOSCH UNIVERSITY STUDENTS AND STAFF.

Stellenbosch University (SU) recognises the importance of the internet and social media¹ in shaping public thinking about our University and our services, students, staff and stakeholders. SU also recognises the importance of our students and staff engaging in and helping to stimulate conversation through interaction in social media. Students and staff are encouraged to interact online about SU matters and developments in higher education. However, it is important to understand that **the use of social media as a communication channel is subject to existing SU policies and procedures**, specifically the:

- Disciplinary Code for Students of Stellenbosch University (applicable to students)
- Policy on Unfair Discrimination and Harassment (applicable to staff and students)
- Electronic Communications Policy (applicable to staff and students)

All students and staff are responsible for their own compliance with these policies and should take the time to read and understand these. Behaviours such as misconduct, harassment and victimisation conducted online are addressed in these policies. Any form of online bullying, verbal abuse, defamation, slander and/or name-calling, among others, falls into the same category as face-to-face communication and written communication.

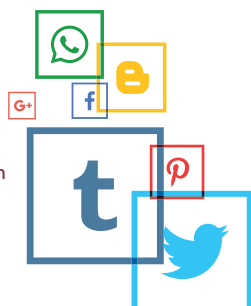
Allegations of online misconduct, harassment and victimisation are regarded just as seriously as similar actions through traditional verbal and written communication. An aggrieved party may report such behaviour (e.g. misconduct, harassment or victimisation through any of the social media channels) to the **Equality Unit**, which may refer matters to Student Discipline (for students) or Human Resources (for staff) as necessary.

The Equality Unit's contact details are:

- unfair@sun.ac.za
- 021 808 3136
- 39 Victoria Street, Stellenbosch

The Corporate Communication Division is developing a comprehensive Social Media Policy but until the policy has been completed, the rules in existing policies and this notice will apply.

¹ "Social media" is defined as any mobile or web-based application or service that allows the creation and exchange of user-generated content, such as a blog, wiki, social network and other interactive websites. Examples of social media platforms include, but are not limited to, Facebook, Twitter, YouTube, Instagram and news websites that allow the public to comment.



INSURANCE: STUDENTS AND THEIR PROPERTY

"A safe campus for all"

– these words give expression to a core aspiration of Stellenbosch University (SU). Not only does SU conduct a continuous campaign to make staff, students and visitors aware of potential risks that may threaten their safety and/or health, but where necessary, Risk Management and Campus Security is made use of, as well as the South African Police Service, to continually enforce and monitor security measures.

Students participate in academic trips, laboratory experiments, sport and other voluntary activities where they can be exposed to risks. The University takes all reasonable measures to protect students and their property when they participate in these activities and during their daily campus life.

It is however impossible to eliminate all risks. Since it is not possible for the University to protect students and their property against all risks, students therefore participate in all University related activities on their own risk.

The University does not take out personal insurance against accidents, medical insurance or any other insurance on behalf of students. The University would like to draw attention to the fact that each student is responsible for his/her own insurance and therefore recommends that he/she takes out sufficient comprehensive insurance for his/her personal possessions, as well as insurance against accidents and/or medical insurance.

FREE WRITING ADVICE



Do you need a bit of extra help with your writing assignments? Do you sometimes struggle with particular writing issues?

The Writing Lab of the University's Language Centre offers a free one-on-one consultation service to all SU students and staff. Friendly, trained writing consultants will assist any student who would like advice on or assistance with any writing assignment. If you struggle to

get started on assignments or worry that your ideas are not clear and do not flow well, you will get guidance at the Writing Lab. We will support you as you improve and sharpen your writing skills, and your improved skills should definitely lead to better marks.

A consultation is 50 minutes long, but we encourage you to come for follow-up consultations until you are satisfied with your writing. We do not do editing at the Writing Lab. We advise you on how to improve your texts. Our aim is to equip you as a writer with writing skills which you can use in other writing tasks at University and beyond.

Book your consultation online through KENAKO, the Writing Lab's electronic booking system, on the MySUN portal or by visiting the Language Centre at 44 Banghoek Road. Appointments need to be made at least 48 hours in advance.

Contact details

Anne-Mari Lackay (amlackay@sun.ac.za) or
Vinelene Hartley (vhartley@sun.ac.za)
021 808 2989/2161

Visit our website for more information on other Language Centre services (<http://www0.sun.ac.za/languagecentre>).

Stellenbosch University is constantly busy improving facilities on campus for the benefit of students and staff. For this reason, please take note that construction may be taking place in and around the accommodation facilities on all campuses during the 2019 academic year.

Maintenance and upgrade projects are also regularly done on all University campuses. As an example, a phased upgrade project commenced at Helshoogte men's residence in January 2018 and will only be completed at the end of 2020.

Since building work on all campuses take place continuously, and initially everyone is affected negatively in some way, no discount regarding residence tariffs will be considered. Students and their parents can however be assured that the wellbeing, safety and academic progress of students always take priority and that the University will do everything possible to limit the inconvenience as much as possible.

During times of construction all possible arrangements will be made for the safety of students and their belongings. For bigger projects, regular site meetings are held and designated representatives of the residences will be invited. These representatives will be tasked to keep their residences informed and updated on all matters.

Where building work is done in the immediate vicinity of University residences, work may continue but no loud/noisy work will be allowed during the first exam opportunity of each semester. In these cases, there will also, in the week leading up to the start of the first exam opportunity, be a restriction on working hours to ensure that students are given sufficient opportunity to prepare for the upcoming examination.

Several alternative study areas are available on campus throughout the year. Students who may be negatively affected by building work, could make use of these areas at any time.

All statutory requirements regarding occupational health and safety will be adhered to and the contract team and workers of each project will be clearly identifiable. The safety of our students is of the utmost importance.



Enquiries for Stellenbosch campus can be directed via email to Mr A.C. Kriel at ack@sun.ac.za.

Enquiries for Tygerberg and Belvillepark campuses can be directed via email to Mr D.J. Theart at dtheart@sun.ac.za.



Twenty students in yellow T-shirts will be situated at different points around central campus during the welcoming week to assist newcomer students and parents who need information and directions to the venues they are supposed to go to. The welcoming champions are well informed about events and the location of venues regarding the welcoming programme. This service aims to contribute to, and enhance, a positive and welcoming "Matie experience" for all first-years and their parents and guardians.

Admin B (Victoria Street opposite Wilgenhof) and Admin A (on the T junction of Ryneveld and Crozier streets) both have an enquiries desk for any other information.

Email enquiries info@sun.ac.za
Telephonic enquiries 021 808 9111

NATIONAL BENCHMARK TESTS (NBT)

It is **compulsory** for all prospective first-year students at SU, regardless of the matriculation year or examination system followed, to write the National Benchmark Tests. For all NBT related detail and reservations, please visit the official NBT website at www.nbt.ac.za. If you have not yet written the NBT by the **last official test session on 5 January**, you can send an email to eloize@sun.ac.za or tel 021 808 4704 to make an appointment to take the test on **Saturday 26 January** in Stellenbosch. Bookings can be made until **21 January**.

PRE-REGISTRATION (VERIFICATION) OF INTERNATIONAL DEGREE SEEKING STUDENTS DOCUMENTATION BEFORE ACADEMIC REGISTRATION

(Applicable to Stellenbosch campus students only)

Undergraduate degree seeking International newcomer students (first-year students)

The verification of documentation for newcomer undergraduate degree-seeking international students will take place from Monday 21 to Friday 25 January at the RW Wilcocks building, Crossley Room 1023.

Students must present the following compulsory documentation for pre-registration:

- Valid passport and study visa
- Proof of South African medical cover
 - ✓ Medical cover must be registered with the SA Council for Medical Schemes in terms of the Medical Schemes Act, 1998.
 - ✓ Please use the following link to ensure that you have the correct medical cover: www.medicalschemes.com/medicalschemes.aspx
- Students with permanent residency, refugees and asylum-seekers must submit proof of their immigration documentation that confirms their status – no study visa and medical cover is required.
- Proof of payment as per your admission letter.

Pre-registration does **not** apply to South Africans with foreign school qualifications.

PLEASE NOTE:

- ✓ **First-year international undergraduate students** do not need to apply for their matriculation exemption certificate prior to registration of the 2019 academic year. However, you need to ensure you meet the exemption requirements by sending your final results to Ms Carmelita Talmarkes at ctalmarkes@sun.ac.za, before pre-registration.
- ✓ **South Africans with foreign school qualifications** need to send your final results to Ms Chantal Grove-Le Guillou at chantalg@sun.ac.za.

An email confirming that you do meet the exemption requirements will be send back to you.


- ✓ All international degree-seeking undergraduate newcomer students need to follow the same welcoming programme as the SA students as per the following link: www.sun.ac.za/welcome and this booklet.

LIBRARY

Library orientation is offered in the Stellenbosch University Library on **28 and 29 January** to familiarise new students with the following aspects of the library:

- Librarian: meet yours
- First-years information on the library website
- First-years assignments: "assignment step by step"
- Learning commons: "bib" place for first-years

**PARTICIPANTS OF THE ORIENTATION PROGRAMME
STAND A CHANCE TO WIN PRIZES.**



**Your library
Your heartBEAT**

Answer a question correctly after the presentations of an orientation video about the Library and Information Service and stand a chance to

WIN A PRIZE!!

Beantwoord 'n vraag korrek na afloop van 'n oriënteringsvideo oor die Biblioteek - en Inligtingsdiens en staan 'n kans om 'n

PRYS TE WEN!!

**LIBRARY ORIENTATION
BIBLIOTEEKORIËTERING
28 - 29 JAN 2019**

Orientation programmes are also presented at the following libraries: Theology, Music, Engineering and Forestry, Medicine & Health Sciences. The orientation is followed up the next week with individual training under the title **GetSmart@URLibrary**.

We would like to invite all parents of first-year students to visit Stellenbosch University Library during welcoming to see the facilities and services available to Matie students. Visit our prestigious Africana room, see the Learning Commons and the E-classroom. The Library is dedicated to support the academic endeavour of our students. Our E-collection include all subjects both national and international.

Faculty programmes indicate the dates and times of library visits.

Enquiries: Pieter du Plessis

Tel: 021 808 4882 | **Email:** dpupless@sun.ac.za | www.library.sun.ac.za





MATIES SPORT

You! Yes, you!

Did you do sport at school? Are you considering joining a sport club at Stellenbosch University? Do it! We even offer an Esports league. And if sport isn't your thing, you can still be part of the Maroon Machine by becoming a #MatiesMVF (most valued fan). Like or follow us on Facebook, Twitter and Instagram and become part of the bigger Maties Sport family.

Maties Sport believes sport is a great contributor towards student success – regardless of whether you are a high-performance athlete or someone who just want to be active and healthy.

Participation in sport teaches self-discipline and time management and offers crucial outlets for stress and tension. Both competitive and recreational sport provide students with opportunities to socialise, develop friendships and maintain a healthy and balanced lifestyle. Maties Sport accepts co-responsibility for the optimal holistic development of student-athletes and the empowerment of high-performance athletes.

That is why Maties Sport invests in its high-performance sport codes as well as its recreation and active lifestyle programme – offering ALL students the opportunity to engage in a healthier and happier lifestyle.

Maties Sport has 30 sport clubs, making it easy to find a sport that suits your needs and skills level.

High performance sport codes are: rugby, hockey, netball, football, athletics, swimming, cricket, cycling, basketball and tennis. Recreation and active lifestyle sport codes are: table tennis, squash, badminton, golf, gymnastics, rowing, canoeing, sailing, water polo, surfing, judo, equestrian, fencing, volleyball, chess, underwater sport, taekwondo, Ultimate (frisbee) and cheerleading. The Maties Parasport Club also offers athletics, swimming, cycling, wheelchair rugby and goal ball for people with disabilities.

You'll have the opportunity to participate in local as well as regional, national and even international competitions, such as:

- Varsity Cup, Varsity Sports, Intervarsity and USSA competitions;
- Regional and local leagues and competitions;
- Residence leagues and competitions.

Only an elite few will be selected for a Varsity Cup or Varsity Sports team, but that's no reason to stay at home. The spotlight falls as much on the fans as the players, with Maties Sport launching a drive to encourage #MatiesMVF's (most valued fans) to support their teams when they play at home.



BENEFIT FROM:

- The High Performance Sport Unit (<https://blogs.sun.ac.za/high-performance>). The focus falls mainly on three key areas: Sports medicine, performance enhancement and empowerment;
- The Recreation and Active Lifestyle Unit (RALU) which promotes physical wellness for staff and students and creates an environment where non-conventional sport and activities are enjoyed and played;
- The Centre for Human Performance Sciences;
- Maties Gymnasium.

DOWNLOAD:

- Get the Maties App and stay informed about events – especially sport events on campus.

CONTACT DETAILS:

Tel: 021 808 4642

Email: matiesport@sun.ac.za

Web: www.sun.ac.za/sport

Facebook: www.facebook.com/SUMatiesSport

Twitter: @MatiesSport

Instagram: MatiesSport

Maties Sport presentation for ALL first-years

Day Friday 25 January

Time 15:00 – 18:00

Venue Coetzenburg sport fields

SU CARES FOR THE ENVIRONMENT

Systemic sustainability at Stellenbosch University is one of our focus areas.

Regarding environmental sustainability, we are involved across eight areas.

We only highlight five of these areas in this graph.

(The other three areas are: Goods and Services; Green Buildings; Leadership.)

ENERGY

Our mission for 2024:

- **reduce** carbon emissions and greenhouse gases
- **use** renewable energy sources
- **improve** energy efficiency on all campuses

How we're saving on campus:

- Energy-saving lightbulbs
- Smart metering of energy consumption
- Natural temperature regulation via vegetation and building materials
- Motion-activated lights

WASTE

All campuses have a three-bin system for

- 1 recyclables,
- 2 non-recyclables, and
- 3 food waste/compost

E-waste is collected by the IT Department at various collection points and then

- repaired and upgraded for **re-use** by someone else, or **recycled** for certain parts, such as metal, plastic and glass.

Did you know?

Leftover food from kitchens and cafeterias is treated and then used as compost.

BIODIVERSITY AND LAND USE

Our campuses are part of a larger, interconnected ecosystem and our actions will have an impact on the natural environment around us.

Our targets:

- 10% increase in carbon sequestration by 2024 through planting of trees
- Change 60% of all landscapes to be endemic and/or indigenous by 2024
- 5% increase in areas designed as green belts
- 80% organic pest control
- 80% use of organic fertilisers in landscapes

WATER

Water remains one of our most precious resources in the Western Cape. We're committed to using it wisely for years to come.

How we're saving on campus:

- Irrigation with non-potable water
- Water-saving showerheads, tap aerators and adapted cisterns in toilets
- Indigenous, waterwise landscaping
- Permeable paving allows run-off water to replenish underground aquifers
- Harvesting of rainwater
- Using of grey water for flushing toilets

TRANSPORT

Cut down on carbon emissions and save yourself parking hassles by opting for one of the following transport options:

- **WALK** on the safe, patrolled pedestrian routes
- **CYCLE** on a Matie Bike (available to rent), or bring your own
- **RIDE** on the campus shuttle bus on certain routes
- **SHARE** a ride

Did you know?

Stellenbosch University was the first university in South Africa to make bicycles available for hire to students.

Visit www.sun.ac.za/sustainability to see how you can contribute.



COMPUTER USER AREAS (CUAs)



COMPUTER USER AREAS (CUAs)

It is compulsory for students to register at the computer user areas.

To be able to register:

- you must take note of the University's Electronic Communications Policy at <http://www.sun.ac.za/ecp>;
- you must already be registered as a student;
- your student card must be activated, and **you must have your card with you**;
- you will need your student number;
- you will need the letter or sms containing your password that you received in the mail; and
- **you MUST know your student number and your ID number or passport number.**

TECHNOLOGY ON CAMPUS

- Students may connect their own devices (PCs, laptops, tablets or smart phones) to the University's campus network, subject to certain conditions.
- To avoid long queues, you can register your private device online. More information is available on <http://www.sun.ac.za/ITHUB>.
- Your central point for online information is my.sun.ac.za. Here you will find access to SUNLearn, your exam results, password change and various other services.
- For all computer and IT-related information, please visit <http://www.sun.ac.za/ITHUB> or request service at <http://servicedesk.sun.ac.za>.
- For up to date IT news on campus and elsewhere follow us on Twitter (@ITStellenUni).

CUA-INFORMATION

FHARGA

Where?	Van Der Sterr building, c/o Victoria & Bosmanstreet and CJ Langenhoven Student Centre Level 1 (Neelsie)
For whom?	Faculty of Economic & Management Sciences
www?	http://www.sun.ac.za/english/faculty/economy/ebsk
Email	FHARGA@sun.ac.za
Who's there?	Neelsie Manager: Johan van Rooyen, Room E9.2, tel 021 808 4113
	Chief Technical Officer: Chris Bosman, Room E8.2, tel 021 808 3436
	Assistant Technical Officer: Thurlo Muller, Room E7.2, tel 021 808 3829
	Van Der Sterr Building, Technical Officer: Remé du Plessis, Room 3053, tel 021 808 3433

FIRGA

Where?	Civil Engineering Building General use area: Room S303, Third floor Electronic Classrooms: Rooms S203 & S207, Second floor
For whom?	Faculty of Engineering
www?	http://www.firga.sun.ac.za
Email?	firga@sun.ac.za
Who's there?	Manager: Johan Brand, Room S205, tel 021 808 3562, jbrand@sun.ac.za
	Junior Technical Officer: Bennie Lindoor, Room S303, tel 021 808 4415, bennie@sun.ac.za
	Technical Officer: Quinton Hendrikse, Room S203, qlh@sun.ac.za

HUMARGA

Where?	Arts and Social Science Building, Third floor, Merriman Avenue
For whom?	Arts and Social Sciences, Education, Law and Theology faculties as well as blind and partially sighted students of all faculties
www?	http://www.sun.ac.za/humarga/
Who's there?	IT Manager: Jan Louw, Room 301, tel 021 808 2128, jlo@sun.ac.za
	Assistant IT Manager: Petro Newman, Room 301, tel 021 808 2128, pa@sun.ac.za
	Humanities Helpdesk: Room 306, tel 021 808 2129, humarga@sun.ac.za

NARGA

Where?	NARGA A, B & Open Area: Admin A NARGA D: Geology building NARGA E, F, G & H: Natural Sciences building, Third floor
For whom?	Science and AgriSciences faculties
www?	www.sun.ac.za/science
Email?	narga@sun.ac.za
Who's there?	Manager: Ilse de Kock, Room 2016b, Al Perold Building, tel 021 808 2682
	Technical Officers: Johan van Rooyen & Richard Thompson, Admin A, room 2091, tel 021 808 2203 (Service Desk and User Support)
	Senior Technical Officer: Brandon April, Natural Science 3009, tel 021 808 2562 (Windows Software)
	Head: IT Services Paul Erasmus, Natural Science 3007, tel 021 808 2698 (Linux System Administrator)



TAKE YOUR SAFETY SERIOUSLY

Students should take the same safety precautions in Stellenbosch than elsewhere in South Africa. Thousands of mobile phones, computers and vehicles attract criminals.

FOLLOW THESE TIPS:

- Never walk alone, especially at night. Plan to walk in groups, use the shuttle service or request security to escort you.
- Keep your phone and valuables out of sight of other people.
- Carry a whistle and pepper spray at all times to be able to draw attention if needed. Criminals hate attention.
- Choose the safest route, even if it is not the shortest. Victoria Street and Bosman Street need to be the core of your route.
- Avoid isolated areas, especially when you exercise early in the morning or late in the afternoon.
- Be conscious of your environment, as criminals prefer to target someone not aware of his/her direct surroundings.
- Keep a safe distance if a motorist asks for directions.
- If you suspect that someone might be following you, change direction.
- Be a caring Matie: accompany a friend.
- Property on a car seat is tempting to a thief. Lock it in the boot.

SAFETY ESCORT AT NIGHT: If you need to move between campus buildings, or from a building to your car after dark (19:00 – 05:00), a security officer will escort you. Call 021 808 4891 or alternatively 021 808 4202 and wait for the officer to join you. You can also Whatsapp the security office at 082 808 2333 to contact you. Unfortunately no voice calls to this number is possible.

SAFEST ROUTES: Bosman and Victoria Streets are the safest routes. At night a security officer is on duty in the mobile security kiosk.

SHUTTLE SERVICE: On weekdays the shuttle service runs from 07:00 to 17:30 on a fixed schedule from the general parking area on the edge of the campus to central campus (book online at: www.sun.ac.za/mobility-shuttles).



EMERGENCY NUMBERS

(save these numbers on your mobile phone)

Stellenbosch campus 24-hour emergency number: 021 808 2333

Enquiries / reporting / safety escort: 021 808 4202

Tygerberg campus 24-hour emergency number: 021 938 9507

Whatsapp EMERGENCY NUMBER: 082 808 2333

www.sun.ac.za/safety

TWO OPTIONS TO REGISTER AS A STUDENT

There are two different options to register in January. They are:

- self-registration (e-registration), or
- the registration process in NARGA on the Stellenbosch campus, or GERGA on the Tygerberg campus for students in the Faculty of Medicine and Health Sciences.

SELF-REGISTRATION (E-REGISTRATION)

- If you have completed the National Senior Certificate or the IEB-certificate, you will be able to register yourself.
- If you are a first-year, **self-registration opens on 14 January** up to the time slot determined for your faculty's registration in NARGA, or in GERGA.
- **Self-registration can be done from any computer with access to internet on www.maties.com.**

Student cards can be obtained at the Student Centre (Neelsie) in Stellenbosch, in the time slot determined for your faculty's registration in NARGA, or in GERGA if you are at Tygerberg.

Candidates from other school systems cannot make use of self-registration. It will, however, be beneficial if candidates from other school systems can send their final school results, as well as the certificate of university exemption that must be obtained from the SA Matriculation Board, to info@sun.ac.za. Your student number must be supplied as well.

NARGA or GERGA-registration

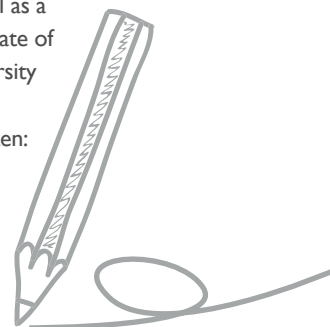
- GERGA registration at the Tygerberg campus is scheduled for Friday 25 January.
- NARGA registration at the Stellenbosch campus is scheduled per faculty and allocated to time slots for Monday 28 and Tuesday 29 January.

- First-year students who have not registered on these dates and who obtain special permission to register (the programme for which you want to register might already be full), will have to register later in the course of that week in NARGA together with the senior students of their faculty.
- First-year students, who register later than that, will be charged a levy of R500, on condition that the relevant Faculty Administrator has granted permission for late registration.
- If you do not register yourself before you arrive in Stellenbosch or at Tygerberg, it is your responsibility to ensure that you comply with all the admission requirements of your study programme before you leave for Stellenbosch.

If you are going to register in NARGA or GERGA, **you must report with the following original documents at registration** in your faculty's allotted registration time slot:

1. Advice of results of the 2018 NSC or IEB final school-leaving examination.
2. NSC or IEB candidates who matriculated in 2017 or earlier: National Senior Certificate.
3. Candidates from other school systems: School-leaving certificate/s and certificate of university exemption issued by the SA Matriculation Board.
4. Candidates who studied at other universities: The document/s mentioned at 2 or 3 above, as well as a full academic record and a certificate of good conduct issued by the university concerned.
5. If you are not a South African citizen: a valid study permit.

Please take note of the notice regarding the writing of the National Benchmark Tests.



REGISTRATION SCHEDULE 2019

FRIDAY 25 JANUARY

Registration of all new first-year students of the Faculty of Medicine and Health Sciences (**who could not register themselves via www.maties.com**)

09:00 – 09:30	Huis Francie van Zijl
09:30 – 10:00	Kerkenberg and Meerhoff
10:00 – 10:30	Hippokrates
10:30 – 11:45	Osler (Private Students' ward)
Venue	Venues as indicated in registration booklet

14:00 – 16:00	Registration of new first-year students for B of Occupational Therapy and B of Speech-Language and Hearing Therapy who could not register themselves via www.maties.com
Venue	Ms Erina van Wyk, room A3008, Admin A, Stellenbosch campus

MONDAY 28 JANUARY

08:00 – 09:00	Education
08:30 – 09:30	Engineering
09:00 – 10:30	Law <i>LLB, BCom (Law), BAccLLB, BA (Law)</i>
10:30 – 11:30	Theology
10:30 – 11:30	AgriSciences
13:30 – 15:00	Science
14:30 – 16:00	Economic and Management Sciences <i>BAcc, BCom (all programmes, including EDP)</i>

TUESDAY 29 JANUARY

08:30 – 11:00	Arts and Social Sciences
---------------	--------------------------

EXTENDED DEGREE PROGRAMMES

Extended degree programmes (EDP) offer selected students the opportunity to strengthen their study base with a view to ultimate success.

Faculties that offer extended degree programmes are:

- AgriSciences
- Arts and Social Sciences
- Economic and Management Sciences
- Engineering
- Science

See contact details below for any questions regarding the extended degree programmes.

All first-years participate in **early assessment**. To this end, they will complete a form of assessment in all first-year modules in the first six weeks of the academic year in order to form an early impression of their academic standing. Therefore, it is important that you give your studies your full attention from the outset, so that early assessment offers a true reflection of your progress.

PLEASE NOTE: Students who are following an extended degree programme register in faculty context on either **Monday 28 or Tuesday 29 January**. (Please consult the notice on registration that was sent to you separately by the University Registrar.)

General enquiries	Ms Claudia Swart-Jansen van Vuuren claudias2@sun.ac.za 021 808 4502
AgriSciences	Dr Natasja Brown nbro@sun.ac.za 021 808 2015
Arts and Social Sciences	Ms Anita Jonker axjonker@sun.ac.za 021 808 2081
Economic and Management Sciences	Ms Ilze Gelderblom ilzeg@sun.ac.za 021 808 9525
Engineering	Mr Minnaar Pienaar mop@sun.ac.za 021 808 4205
Sciences	Ms Wilma Wagener ww@sun.ac.za 021 808 3063



PARENTS' INTRODUCTION TO FACULTIES

(Students excluded, unless indicated otherwise.)

THURSDAY 24 January

Faculty	Time	Venue
AgriSciences	14:30 – 16:30	Parents meet the Dean, Prof Danie Brink & visit departments Venue: Lecture Room 1002, JS Marais Building (no 61 on the map)
Arts and Social Sciences	14:00 – 15:00	Parents of BA (Sport Science) students meet programme co-ordinator Venue: Sport Science Building, Hall A (no 84 on the map)
	15:30 – 16:30	Parents (all programmes within Faculty) meet the Dean, Prof Anthony Leysens Venue: Endler, Conservatorium, Victoria Street (no 79 on the map)
Economic and Management Sciences	14:30 – 16:00	Parents of EMS students meet the Dean, staff and Student Committee (only parents, no students) Venue: Coetzenburg Centre, Coetzenburg
Education	15:00 – 15:30	Water Venue: Foyer, GG Cillié Building (no 76 on the map)
	15:30 – 16:30	Parents meet the acting Dean, Prof DJ Malan Venue: Room 3001, GG Cillié Building
	16:30 – 17:00	Parents meet lecturers. Enquiries regarding registration, programme and modules. Venue: Room 3001, GG Cillié Building
Engineering	15:00 – 16:00	Parents of first-year students (English) meet the Vice-dean, Prof Anton Basson Venue: Reitz Hall, General Engineering Building, Banghoek Road
Law PLEASE NOTE: Meeting is on Tuesday 22 January	18:00 – 19:00	Parents and first-year Law students meet the Dean, Prof Nicola Smit Venue: Endler, Conservatorium, Victoria Street (no 79 on the map)
	19:00 – 20:00	Opportunity for informal discussions with Faculty members Venue: Old Main Building (Law Faculty)
Medicine and Health Sciences	09:00 – 10:30	Welcoming of parents and new students by the Dean, the Tygerberg Student Council chairperson and other role players in the Faculty Venue: Tygerberg Sports Hall (no 10 on the map)
	10:30 – 11:30	Meeting of parents and new students with programme coordinators for MB, ChB, B of Occupational Therapy, B of Speech-Language and Hearing Therapy, BSc in Dietetics, BSc in Physiotherapy and B in Nursing & Midwifery respectively Venue: Education Building (no 2 on the map)
	11:30 – 15:00	Student support sessions for parents and campus tours for parents and students
	15:30	Depart for Stellenbosch for the Rector's Welcoming
Science	14:00 – 14:30	Parents meet the Dean (only parents, no students) Help with questions regarding modules and programmes (for parents) if needed Venue: Foyer, Mathematical Sciences & Industrial Psychology Building (no 67 on the map)
	14:30 – 16:00	Welcome by the Dean, Prof Louise Warnich and the Vice-dean, Prof Ingrid Rewitzky Venue: Room 3001 (Afrikaans) OR Room 1005 (English), Mathematical Sciences & Industrial Psychology Building
Theology	15:30 – 16:30	Parents meet the Dean, Prof Reggie Nel and the Theological Student Committee (TSC) Venue: Attie van Wijk Auditorium, Faculty of Theology

FACULTY PROGRAMMES



AgriSciences



Engineering



Economic and
Management Sciences



Arts & Social Sciences



Law



Theology



Medicine and Health
Sciences



Science



Education



AGRISCIENCES

● Enquiries	Monika Basson,
1 Tel	021 808 2978
Venue	Room 1033, JS Marais Building (Victoria Street)

All enquiries regarding the Faculty's Welcoming Programme and academic offerings can be directed to staff at the above-mentioned venue.

COMPULSORY INFORMATION SESSION

THURSDAY 24 JANUARY

Compulsory session for AgriSciences students with:

- an average of between **55% and 59,9% for Mathematics** and/or with an average of between **45% and 49,9% for Physics and Chemistry** [for programmes leading to BScAgric, BScFor (Forestry and Natural Resource Management), BScConsEcol, BSc Food Sc and BAgric (Agri-business Management)] ; or
- an average of between **60% and 69,9% for Mathematics** [for the programme BScAgric with Soil Science and Chemistry as major subjects or the programme BScFor (Wood and Wood Products Science)]; and/or with an average of between **55% and 59,9% for Physical Sciences** (Physics and Chemistry) [for the programme BScFor (Wood and Wood Products Science)] and/or
- who have gained conditional admission to the Extended Degree Programme.

Time	15:30 – 16:30
Venue	Lecture Room 1002, JS Marais Building (no 61 on the map)
Enquiry	Dr Natasja Brown, tel 021 808 2015

Please note

- It is compulsory for all AgriScience students to follow the full programme.
- Students who follow the programmes **BSc Food Science, BSc in Conservation Ecology and BSc in Forestry and Wood Sciences** follow the Faculty of AgriSciences Welcoming Programme.
- The programme **BAgric** [excluding BAgric (Agri-business Management)] is presented in collaboration with the Elsenburg Agricultural Training Institute. Students receive their training at Elsenburg, and follow the Elsenburg welcoming programme. Enquiries: Desiree Chinasamy-Dampies, tel 021 808 5457 or DesireeCD@elsenburg.com.

THURSDAY 24 JANUARY

14:30 – 16:30	Parents meet the Dean & visit departments (only parents, no students)
Venue	Room 1002, JS Marais, Victoria Street

15:30 – 16:30 COMPULSORY SESSION

SEE INFORMATION ABOVE

FRIDAY 25 JANUARY

08:00 – 15:00 COMPULSORY FACULTY PROGRAMME FOR ALL AGRISCIENCE STUDENTS

- Welcoming by the Dean
- Assessment
- Academic guidance
- Academic and student support
- Lunch in the Faculty
- Departmental visits

Venue	Room 1002, JS Marais, Victoria Street
-------	---------------------------------------

MONDAY 28 JANUARY

08:30 – 10:30 Compulsory mySun, SunLearn & Lab Online orientation

Venue	Room 1002, JS Marais (English); Room 1011, Van der Sterr (Afrikaans)
-------	---

10:30 – 11:30 Registration
Venue NARGA, Northern entrance, Admin A
(see registration programme)

11:30 – 12:30 **Only** students admitted to the **Extended Degree Programme (EDP)**
Venue Room 1005, Mathematical Sciences and Industrial Psychology Building

14:00 – 17:00 Registration, orientation and placing regarding computer user area – compulsory for all students **except** Wood and Wood Products Sciences

Please make sure that you bring your student card and the letter you received from SU with your username and password to the registration.

14:00 – 15:30 Surnames A – L
15:30 – 17:00 Surnames M – Z
Venue Room 3011, Third Floor, Natural Sciences Building (NARGA H)

14:00 – 17:00 Computer Orientation: **Only Wood and Wood Products Sciences – Afrikaans**
(join Engineering students)
Venue S207A & S207B, Engineering Building, Banghoek Avenue

Please make sure that you bring your student card and the letter you received from SU with your username and password to the registration.

TUESDAY 29 JANUARY

08:30 – 11:00 **Compulsory session**
Academic guidance, timetable & lecture organisation
Examinations
Non-academic & student support
Venue Room 1002, JS Marais (English)
Room 1011, Van der Sterr (Afrikaans)

11:15 – 12:30 **Amazing Race**
Venue Meet at the main entrance, JS Marais

14:00 – 15:00 **Library visit** (surnames A – L)
Venue Stellenbosch University Library

14:00 – 15:00 **Compulsory workshop** (surnames M – Z)
Venue JH Neethling Quad area

15:00 – 16:00 **Library visit** (surnames M – Z)
Venue Stellenbosch University Library

15:00 – 16:00 **Compulsory workshop** (surnames A – L)
Venue JH Neethling Quad area



WEDNESDAY 30 JANUARY

08:00 – 12:30

Welgevallen Experimental Farm visit – all students **except Forestry and Wood Sciences**

Venue

Paul van der Bijl-laboratoria, Welgevallen Experimental Farm

Various fields:

- Agronomy, Plantbreeding and Genetics
- Aquaculture
- Horticulture, Soil Science and Plant Pathology
- Animal Science
- Viticulture and Oenology
- Conservation Ecology Food Science

Important

Comfortable clothes and **walking** (closed) shoes; something warm to wear

09:00 – 10:00

Computer Orientation: **Wood and Wood Products Sciences – English** (join Engineering students)

Venue

S207A & S207B, Engineering Building Banghoek Avenue

10:30 – 12:30

Departmental visit – **only Forestry and Wood Science students**

Introduction to first semester modules and visit to Jonkershoek

Students must wear suitable, closed shoes

Venue

Meet at the main entrance, Paul Sauer



Enquiries

Tel

Venue

Hours

August Engelbrecht

021 808 3947

Room A213, General Engineering Building, Banghoek Road

08:00 – 15:30

All enquiries regarding the Faculty's Welcoming Programme and academic offerings can be directed to staff at the above-mentioned venue.

PLEASE NOTE: All English speaking students follow this programme

THURSDAY 24 JANUARY

15:00 – 16:00

Parents of first-year students meet the Vice-dean, Prof Anton Basson

Venue

A107, General Engineering Building

FRIDAY 25 JANUARY

No formal faculty programme for the day.

MONDAY 28 JANUARY

Programme for English speaking students will be in A107 (Reitz Hall), unless stated otherwise.

08:00 – 08:15

Prof Wikus van Niekerk, Dean of Engineering, welcome first-years
Area in front of the General Engineering Building

Venue

08:30 – 09:30

Registration of all new first-year students who did not yet register online, including first-year EDP students
NARGA, North entrance of Admin A

Venue

10:15 – 10:30

First-years assigned to groups for visits to departments. Senior students accompany first-years to departments.

10:30 – 12:30

Meet the Chairperson of the Department. General orientation on department's degree programmes, facilities and laboratories.

12:30 – 13:30

Lunch at residence / PSO

English speaking students have afternoon off.

TUESDAY 29 JANUARY

09:00 – 10:30

Students meet lecturers for subject orientation

10:30 – 11:30

First-years meet the Engineering Student Council (ESC). Members of ESC explain their different roles in the Faculty.

11:30 – 12:00

Break

12:00 – 12:30

Faculty support programmes for first-years: (Deans Periods, Facilitated group learning sessions, Revision lecturers, Educational Psychologists, etc)

WEDNESDAY 30 JANUARY

09:00 – 12:00

Computer Orientation
(do textbook orders on computer system)
(only English-speaking students)
S207A and S207B
(Electronic classrooms – Civil Eng)

Venue

12:00 – 12:45

All first-year EDP students meet
Ms W Wagener and Prof AH Basson
Reitz Hall

Venue

14:00 – 17:00

All first-years receive their textbooks
Foyer, General Engineering Building

Venue



1 General enquiries SU Client Service Centre
Tel 021 808 9111
Venue Admin A

Academic enquiries Ms Nazli Daniels
Tel 021 808 4837
Venue Admin A, Room 2036

Welcoming programme Ms Ilze Gelderblom
Tel 021 808 9525
Venue CGW Schumann, Room 706

All enquiries regarding the Faculty's Welcoming Programme and academic offerings can be directed to staff at the above-mentioned venues.

THURSDAY 24 JANUARY

14:30 – 16:00 Parent meeting with the Dean
 Parents of EMS students meet the Dean, staff and Student Committee (**only** parents, **no** students)
Venue Coetzenburg Centre, Coetzenburg
Please note The Rector's welcoming follows at 18:00 next to the Coetzenburg Centre

FRIDAY 25 JANUARY

09:00 – 10:30 Compulsory information session for all first-year students
 Students meet the roleplayers in the Faculty including the Dean, Vice-deans, lecturers, Student Committee and support staff and receive important and valuable information regarding their studies.
Venue DRC (Kruiskerk), at the corner of Victoria and Ryneveld Street

MONDAY 28 JANUARY

08:30 – 11:00 Compulsory Library visit
 EMS students visit the Stellenbosch University Library for an orientation (assemble 10 min prior to appointment at reception desk of library).

Groups are divided as follows:
08:30 – 09:00 Group 1 (surnames A – F)
09:00 – 09:30 Group 2 (surnames G – L)
10:00 – 10:30 Group 3 (surnames M – Q)
10:30 – 11:00 Group 4 (surnames R – Z)

08:30 – 11:00 E-mazing Race
 EMS students get to know the campus in a fun way and find out in which buildings they attend class in. They also learn how their class schedule works, which departments there are in the Faculty, what type of support the University offers and much more.

PRICESTO WIN!

08:30 – 09:00 Group 4 (surnames R – Z)
09:00 – 09:30 Group 1 (surnames A – F)
10:00 – 10:30 Group 2 (surnames G – L)

10:30 – 11:00 Group 3 (surnames M – Q)
Venue Stellenbosch University Library (stairs)

14:30 – 16:00 Academic registration
All students that have not already registered online
Venue NARGA, Northern entrance, Admin A (see registration programme)

TUESDAY 29 JANUARY

08:00 – 16:00 Computer registration
 This session includes information concerning class schedules, how to use the SUNLEARN platform and module mentor registration
08:00 – 10:00 Group 1 (surnames A – E)
10:00 – 12:00 Group 2 (surnames F – J)
14:00 – 16:00 Group 3 (surnames K – M)
Venue FHARGA, First Floor, Langenhoven Student Centre (Neelsie)

WEDNESDAY 30 JANUARY

08:00 – 12:00 Computer registration
 This session includes information concerning class schedules, how to use the SUNLEARN platform and module mentor registration
08:00 – 10:00 Group 4 (surnames N – R)
10:00 – 12:00 Group 5 (surnames S – Z)
Venue FHARGA, First Floor, Langenhoven Student Centre (Neelsie)
14:00 – 15:00 SU and Faculty bursary general information session
Please note This session is only for students who have already received a bursary offer from the University or Faculty of Economic and Management Sciences, e.g. a recruitment- or project zero bursary. No new applications.
Venue Van der Sterr 2121





Enquiries Taryn Bernard & Shona Lombard
Tel 021 808 2146 / 021 808 2513
Hours 09:00 – 16:00
Venue Arts Building, Room 461 / Room 457

All enquiries regarding the Faculty's Welcoming Programme and academic offerings can be directed to staff at the above-mentioned venues. Please note the times when staff will be available.

THURSDAY 24 JANUARY

14:00 – 15:00 Parents of BA (Sport Science) students meet programme co-ordinator
Venue Sport Science Building, Hall A (no 84 on the map)

15:30 – 16:30 Parents (all programmes within Faculty) meet the Dean, Prof Anthony Leysens
Venue Endler, Conservatorium, Victoria Street (no 79 on the map)

FRIDAY 25 JANUARY

Compulsory session for all prospective students with matric averages of between 60% and 64,9%.

- This session will be used to convey information on the compulsory Extended Degree Programme (EDP) for candidates whose Grade 12 averages are between 60% and 64,9%.
- This session specifically takes place prior to registration to ensure that students are properly advised and will be registered for the correct programmes or modules according to Calendar regulations.

Time 09:30 – 12:00
Venue Room 230, Arts building (no 77 on the map)
Enquiry Anita Jonker, tel 021 808 2081
 Taryn Bernard, tel 021 808 2146
 Shona Lombard, tel 021 808 2513

Take note: All non-music students who want to take **Practical Music Study E** as an extra subject or elective must fill in their names for an audition at the Music Department (use the Neethling Street entrance). Auditions will take place on Friday, 25 January.

Enquiries: Ms Lauren Dasappa, laurendasappa@sun.ac.za

The **compulsory** Faculty welcoming and orientation takes place with in the different programmes. There are four sessions to attend.

- Meeting with the Dean and the BA Student Committee (BASC)
- Programme meetings with programme coordinators
- Library orientation
- Introduction to HUMARGA (computer users' area) and registration for network use.

MONDAY 28 JANUARY

08:30 – 10:15 Students meet the **DEAN** and **BASC**
Venue Endler, Conservatorium, Victoria Street (no 79 on map)

PROGRAMMES:

- BA in Humanities
- BA in International Studies
- BA in Drama and Theatre Studies
- B of Occupational Therapy
- B of Speech-Language and Hearing Therapy
- BA in Visual Arts
- BA in Sport Science

08:30 – 10:15 Students meet **PROGRAMME COORDINATORS**
VENUE PROGRAMME

Wilcocks, 3001 BA in Social Dynamics
 Wilcocks, 1001 BA in Language and Culture
 Wilcocks, 1012 B of Social Work
 Arts, 228 BA in Human Resource Management
 Arts, 227 BA in Political, Philosophical and Economic Studies
 Arts, 226 BA in Socio-Informatics
 Arts, 224 BA in Development and Environment

Jannasch Hall, BMus; BA in Music; Higher Certificate in Music;
 Conservatorium Diploma in Practical Music

10:45 – 12:30 Students meet the **DEAN** and **BASC**
Venue Endler, Conservatorium, Victoria Street (no 79 on map)

PROGRAMMES:

BA in Social Dynamics
 BA in Language and Culture
 B of Social Work
 BA in Human Resource Management
 BA in Political, Philosophical and Economic Studies
 BA in Socio-Informatics
 BA in Development and Environment
 BMus; BA in Music; Higher Certificate in Music;
 Diploma in Practical Music

10:45 – 12:30 Students meet **PROGRAMME COORDINATORS**
VENUE PROGRAMME

Arts, 230 BA in Humanities
 Arts, 229 BA in International Studies
 Arts, 223 B of Occupational Therapy
 Arts, 222 B of Speech-Language and Hearing Therapy
 Adam Small
 Theatre Complex BA in Drama and Theatre Studies
 Visual Arts, 1024 BA in Visual Arts
 Sport Science Bld, Foyer BA in Sport Science

14:00 – 17:00 LIBRARY ORIENTATION
Venue Stellenbosch University Library

14:00 BA in Language and Culture
 BA in Sport Science
14:30 BA in International Studies
 BA in Drama and Theatre Studies
15:00 BA in Social Dynamics
 B of Social Work
15:30 BA in Visual Arts
 BA in Development and Environment
 BA in Political, Philosophical and Economic Studies
16:00 BMus, BA in Music, Higher Certificate in Music, Diploma in Practical Music
 BA in Socio-Informatics
 BA in Human Resource Management
 B of Speech-, Language and Hearing Therapy
 B of Occupational Therapy
 BA in Humanities

TUESDAY 29 JANUARY

08:30 – 11:00 REGISTRATION
Venue NARGA, Northern entrance to Admin A
Compulsory introduction to HUMARGA (computer users' area) and registration for network

11:00 – 13:00 BA in Humanities
14:00 – 16:00 BA in Language and Culture
 BA in Social Dynamics
 BA in Development and Environment
 BA in Socio-Informatics

WEDNESDAY 30 JANUARY

Compulsory introduction to HUMARGA (computer users' area) and registration for network

08:00 – 10:00 BA in International Studies
 BA in Sport Science
 BA in Visual Arts
 BA in Human Resource Management
10:00 – 12:00 BA in Drama and Theatre Studies
 B of Social Work
 BA in Political, Philosophical and Economic Studies
 B of Speech-, Language and Hearing Therapy
 BMus, BA in Music, Higher Certificate in Music,
 Diploma in Practical Music



1 General enquiries	Mr Bradley Greenhalgh
Tel	021 808 3196
Venue	Room 2008, Old Main Building
Academic enquiries	Mr Shirle Cornelissen (Faculty Administrator)
Tel	021 808 9111
Venue	Admin A
Financial enquiries	Student Fees Division (class fees)
Tel	021 808 3530
Venue	Admin A

All enquiries regarding the Faculty's Welcoming Programme and academic offerings can be directed to staff at the above-mentioned venues. Please note the times when staff will be available.

TUESDAY 22 JANUARY

LLB, BCom (Law), BA (Law) and BAccLLB

14:00 – 18:00	Students arrive to move into their residences
Venue	Various residences
18:00 – 19:00	Parents and first-year Law students meet the Dean (Prof Nicola Smit)
Venue	Endler Hall, SU Conservatorium (Victoria Str)
19:00 – 20:00	Opportunity for informal discussions with staff members
Venue	Old Main Building (Law Faculty)

WEDNESDAY 23 JANUARY

LLB, BCom (Law), BA (Law) and BAccLLB

08:30 – 16:00	COMPULSORY FACULTY PROGRAMME
	<ul style="list-style-type: none"> • Assessment • Academic guidance • Law programme preparation
Venue	Lunch with the Faculty Room 1023, Old Main Building

THURSDAY 24 JANUARY

LLB, BCom (Law), BA (Law) and BAccLLB

08:30 – 12:00	COMPULSORY FACULTY PROGRAMME
	<ul style="list-style-type: none"> • Assessment • Academic Guidance • Law programme preparation
Venue	Room 1023, Old Main Building

FRIDAY 25 JANUARY

LLB, BCom (Law), BA (Law) and BAccLLB

08:30 – 12:00	COMPULSORY FACULTY PROGRAMME
	<ul style="list-style-type: none"> • Assessment • Academic guidance • Programme specific information
Venue	Room 1023, Old Main Building

ACADEMIC AND COMPUTER REGISTRATION

All students complete TWO registration processes: academic registration and registration at the Faculty's computer user area. Students who have already registered academically via the internet will have completed

the first registration process. If not, please report to ADMIN A at the times set out below. Students may only register at the computer user area once they have completed their academic registration. For computer registration, all students must report to HUMARGA (LLB & BA (Law)) or FHARGA (BCom (Law) & BAccLLB) at the times set out below. A late registration fee will be levied on students who fail to register in the prescribed time slot.

PLEASE NOTE: BCom (Law) and BAccLLB students attend the general welcoming programme of the **Faculty of Law**, which includes academic registration. However, these students use the computer user area of the **Faculty of Economic and Management Science** only, and accordingly register at FHARGA on Tuesday 29 January.

MONDAY 28 JANUARY

09:00 – 10:30	Registration
	LLB, BCom (Law), BA (Law) and BAccLLB
Venue	NARGA, Northern entrance to Admin A

10:30 – 12:30	COMPULSORY FACULTY PROGRAMME
Venue	Room 1023, Old Main Building

14:00 – 16:00	Registration and computer orientation
	LLB and BA (Law)
Venue	HUMARGA, Arts and Social Sciences Building

TUESDAY 29 JANUARY

08:00 – 10:00	Registration and computer orientation
	BCom (Law) and BAccLLB (surnames A – L)
Venue	FHARGA, Accounting and Statistics Building

10:00 – 12:00	Registration and computer orientation
	BCom (Law) and BAccLLB (surnames M – Z)
Venue	FHARGA, Accounting and Statistics Building

14:00 – 15:00	Library visit
	LLB and BAccLLB
Venue	Stellenbosch University Library, Foyer

15:00 – 16:00	Library visit
	BA (Law) and BCom (Law)
Venue	Stellenbosch University Library, Foyer

WEDNESDAY 30 JANUARY

Compulsory for all LLB, BCom (Law), BA (Law) and BAccLLB

08:00 – 12:30	COMPULSORY FACULTY PROGRAMME
	<ul style="list-style-type: none"> • Introduction to first-year modules • Feedback on assessment • Student societies • Closing
Venue	Room 1023, Old Main Building





1 Enquiries Ms Marieke Brand
Tel 021 808 2142
Email mariekeb@sun.ac.za
Venue Room 1024 (Reception), Room 2031 (Attie van Wijk Auditorium), Faculty of Theology, 171 Dorp Street, Stellenbosch
Hours 08:30 – 16:30

All enquiries regarding the Faculty's Welcoming Programme and academic offerings can be directed to staff at the above-mentioned venue. Please note the times when staff will be available.

THURSDAY 24 JANUARY

15:30 – 16:30 Parents meet the Dean & Theological Student Committee (TSC)
Venue Attie van Wijk Auditorium

FRIDAY 25 JANUARY

09:00 – 12:00 General orientation to the faculty
Venue Attie van Wijk Auditorium

MONDAY 28 JANUARY

08:15 – 09:00 Registration information session
Venue Attie van Wijk Auditorium

09:30 – 10:00 Library visit
Venue Foyer, Stellenbosch University Library

10:30 – 11:30 REGISTRATION
Venue Admin A

14:00 – 16:00 Introduction to computer user area (CUA)
Venue HUMARGA

TUESDAY 29 JANUARY

08:30 – 09:00 Introduction:
 • Centre for Teaching and Learning
 • Language Centre
Venue Attie van Wijk Auditorium

09:00 – 10:30 Introduction of lecturers
 • Old and New Testament
 • Hebrew, Greek
 • Systematic Theology and Ecclesiology
 • Practical Theology and Missiology
 • Philosophy, Sociology, Psychology
Venue Attie van Wijk Auditorium

10:30 – 11:00 Tea and refreshments: lecturers, TSC and first-years
Venue Cafeteria and tent area, Faculty of Theology

11:00 – 11:30 Library visit
Venue Theology Library, Faculty of Theology

11:30 – 12:30 Introduction to SUN Learn and SU internet use
Venue Computer lab, Faculty of Theology

14:30 – 16:00 Faculty spiritual formation programme
Venue Sol Iustitiae Chapel

WEDNESDAY 30 JANUARY

10:00 – 10:30 Introduction:
 • Centre for Student Counselling and Development (CSCD)
 • Equality Unit
Venue Attie van Wijk Auditorium

10:30 – 12:30 **INFORMATION SESSION** on centres and partners of the faculty:
 • Beyers Naudé Centre and archive
 • Ekklesia
 • EGON
 • NetACT
 • Communitas
 • DRC archive
Venue Attie van Wijk Auditorium

12:30 – 14:00 Joint lunch: first-years, TSC, staff



FACULTY OF MEDICINE AND HEALTH SCIENCES

1 All new students and their parents (MB, ChB, B of Occupational Therapy, B of Speech-Language and Hearing Therapy, BSc in Dietetics, BSc in Physiotherapy and *B of Nursing and Midwifery) are cordially invited to participate in the following activities (for parents, only Thursday 24 January).

TAKE NOTE: Students in the programmes B of Occupational Therapy (OT) and B of Speech-Language and Hearing Therapy (SLHT), together with their parents, follow the programme at the Tygerberg campus on **the morning of 24 January** and thereafter these students follow the programme of the Faculty of Arts and Social Sciences on the Stellenbosch campus.

Transport will be provided for these OT and SLHT first-years and their parents from Stellenbosch to Tygerberg at the following times:

07:30 Depart Stellenbosch campus from Merriman Avenue (bus stop at JC Smuts bridge)

08:30 Arrive at Tygerberg campus. Parents and first-years report to the Tygerberg campus Sports Hall.

Please note that the Welcoming ceremony at 18:00 (informal programme for students starts at 17:30) on Thursday 24 January, takes place at the Danie Craven Stadium in Stellenbosch, and not on Tygerberg campus. New Tygerberg campus students and their parents are requested to attend this programme after the day's programme at Tygerberg. For those who do not have their own transport, busses will be arranged from Tygerberg to Stellenbosch and back.

ENQUIRIES

Sandra Josias 021 938 9789
Khairounisa Foflonker 021 938 9461

THURSDAY 24 JANUARY

09:00 – 10:30 Welcoming of parents and newcomer students by the Dean, the Tygerberg Student Council chairperson and other role players in the Faculty Tygerberg Sports Hall (no 10 on the map)

Venue

10:45 – 11:30 Meeting of parents and new students with programme coordinators for MB, ChB, B of Occupational Therapy, B of Speech-Language and Hearing Therapy, BSc in Dietetics, BSc in Physiotherapy and B of Nursing and Midwifery respectively Education Building (no 2 on the map)
MB, ChB: Lecture Hall 11
Physiotherapy: Lecture Hall 3
Dietetics: Lecture Hall 1
Speech-Language & Hearing Therapy: Lecture Hall 8
Occupational Therapy: Room 1034
Nursing and Midwifery: Lecture Hall 5

Venue

Please visit the student societies' exhibition in the Tygerberg Student Centre between 11:30 and 14:00 if you are not involved in any of the sessions below. Please also visit the cafeteria in the Tygerberg Student Centre or the coffee shop in the Clinical Building for refreshments or a light meal. There is also a kiosk in the Education Building.

11:45

Busses depart from Tygerberg to Stellenbosch: **Occupational Therapy and Speech-Language & Hearing Therapy first-year students and parents return to Stellenbosch for the remainder of the Welcoming Programme.**

11:45 – 13:00

Explore Tygerberg – a campus tour for first-year students of Hippokrates and Meerhoff, and their parents

Venue

Assemble on the Hippokrates lawn (no 4 on the map)

11:45 – 13:00

**Osler students and their parents meet Osler committee members

Venue

Lecture Hall 11

13:00 – 14:30

Explore Tygerberg – a campus tour for first-year students of Osler, Huis Francie van Zijl and Huis Kerkenberg, and their parents
Assemble on the Hippokrates lawn

Venue

13:00 – 14:30

Session on student support at Tygerberg campus for all parents of first-year students
Lecture hall 11

Plek

15:30

Busses depart for Danie Craven Stadium, Stellenbosch

17:30 – 18:00

Informal programme

18:00 – 19:30

OFFICIAL WELCOMING

Rector's welcoming for new students and their parents (**compulsory** for all students)

Venue

Danie Craven stadium
(no 33 on the Stellenbosch campus map)

If you are using your own transport, please take the traffic congestion in Stellenbosch into account when planning travelling time, as well as parking and walking distance to the stadium. Comfortable clothes and shoes are recommended.

****Osler refers to the Private Student Organisation (PSO) on Tygerberg campus, i.e. students who do not live in residences.**

FRIDAY 25 JANUARY

PLEASE NOTE A Muslim prayer facility is available on Tygerberg campus

09:00 – 11:30

Registration (only those first-year students who could not self-register via <http://www.maties.com>) and taking of photographs for student cards (all first-years)

09:00 – 09:30

Huis Francie van Zijl

09:30 – 10:00

Huis Kerkenberg and Meerhoff

10:00 – 10:30

Hippokrates

10:30 – 11:45

Osler

Venue

As indicated in registration information booklet



12:00 – 16:00 GERGA-orientation
(**compulsory for all first-years**)
12:00 – 12:45 Hippokrates
13:00 – 13:45 Huis Francie van Zijl
14:00 – 14:45 Huis Kerkenberg and Meerhoff
15:00 – 15:45 Osler
Venue GERGA, 3rd floor, Education Building

14:00 – 16:00 Registration of new first-year students for the B of Occupational Therapy and B of Speech-Language and Hearing Therapy programmes who cannot self-register
Venue Room 3008 (office of Ms Erina van Wyk), Admin A (no 1 on the Stellenbosch campus map), Stellenbosch

SATURDAY 26 JANUARY

General and social integration as arranged by residences and Osler PSO.

MONDAY 28 JANUARY

08:00 – 16:00 Academic orientation: An introduction to your degree
Introduction (Prof Julia Blitz, Vice-dean: Learning and Teaching and Ms Ilana van Niekerk, Chairperson: Tygerberg Academic Affairs Council)
Different programmes and activities are presented within group context.
Venue Lecture Hall 11

*Some of the activities include visits to patients in the hospital; students are, therefore, required to dress in a professional manner***.*

TUESDAY 29 JANUARY

General and social interaction as arranged by residences and Osler PSO.

WEDNESDAY 30 JANUARY

09:00 – 12:00 What first-years should know – an interactive learning experience
Venue Tygerberg Sports Hall
09:00 – 16:00 Compulsory session for B of Occupational Therapy students at the Tygerberg campus
Venue Room 1034, 1st Floor, Education Building
12:30 – 14:00 Tutor-mentor introduction and lunch
Venue Lecture Hall 11
Nursing and Midwifery: Lecture Hall 8
14:00 – 15:30 Academic Administration

- Submission of admission documents: 2 certified copies of Matriculation results, 2 certified copies of appropriate identification documentation+ and clinical visitation forms (only Dietetics and Physiotherapy students)
- Completion of HPCSA and SANC registration forms
- Distribution of timetable booklets and study guides
- Opportunity for questions regarding administrative issues

Venue MB, ChB: Lecture hall 11
Physiotherapy and Dietetics: Lecture Hall 7
Nursing and Midwifery: Lecture Hall 8

*****Men** Neat trousers with collared shirt, no slip-slops, no excessive jewellery.

*****Women** Neat and appropriate attire, no flip-flops, no excessive jewellery.

+SA citizens Certified copies of ID or birth certificate (no passports or driver's licences) – two copies.

+International students Passport and study permit – two certified copies.

***PLEASE NOTE:** The name of this degree programme will change to Bachelor of Nursing pending approval from the Department of Higher Education and Training.



Enquiries Mrs W Wagener | Mrs M van den Worm
Tel 021 808 3063 | 021 808 3760
Hours As indicated in programme below
Venue Room 2012 and 2013, Al Perold Building
 (no 65 on the map)

All enquiries regarding the Faculty's Welcoming Programme and academic offering may be directed to staff at the abovementioned venues. Please note the times when staff will be available.

Please note

- **Attendance is compulsory for all new students.**
- Students who follow the programmes BSc Food Science, BSc in Conservation Ecology and BSc in Forestry and Wood Sciences follow the Faculty of AgriSciences Welcoming Programme.

THURSDAY 24 JANUARY

Parents meet the Dean (only parents, not for students)

14:00 – 14:30 Help with questions regarding modules and programmes (for parents) if needed
Venue Foyer, Mathematical Sciences & Industrial Psychology Building (no 67 on the map)

14:30 – 16:00 Welcome by the Dean, Prof Louise Warnich and Vice-dean, Prof Ingrid Rewitzky
Venue Room 3001 (Afrikaans) OR Room 1005 (English), Mathematical Sciences & Industrial Psychology Building

FRIDAY 25 JANUARY

08:30 – 09:50 **Welcoming**
 • Meet the Dean, Prof Louise Warnich and Vice-dean, Prof Ingrid Rewitzky
 • Orientation regarding programme offering of the Faculty
Venue Ender Hall, Conservatorium (no 79 on the map)

10:00 – 12:30 Your journey through Science@SU
 (Bring stationary: pen, kokis, highlighters)

Programme **Human Life Sciences (Biology) and (Biology with Psychology)**
Venue Room 1005, Mathematical Sciences & Industrial Psychology Building

Programme **Molecular Biology and Biotechnology**
Venue Room A201, JC Smuts Building (no 53 on the map)

Programme **Biodiversity and Ecology**
Venue Broom Lecture hall 2020, Natural Sciences Building (no 69 on the map)

Programme **Sport Science**
 Organisation of the Sport Science practical programme and timetable and the ordering of Sport Science uniforms
Venue Room 1015, First-Year Chemistry Building (no 56 on the map)

Programme **Physics**
Venue Room Beta 3002, Merensky Building (no 66 on the map)

Programme **Mathematical Sciences**
Venue Room 3001, Mathematical Sciences & Industrial Psychology Building

Programme **Chemistry**
Venue Room 2011, First-Year Chemistry Building (no 56 on the map)

Programmes **Earth Science and Geo-informatics**
Venue Room 1004, Chamber of Mines Building (no 70 on the map)

MONDAY 28 JANUARY

Your support structures, timetable and lecture organisation

08:00 – 09:30 English speaking students
09:45 – 11:15 Afrikaans speaking students
Venue Room 1005, Mathematical Sciences & Industrial Psychology Building

11:00 – 13:00 Help with further questions regarding modules and programmes if needed
Venue Rooms 2012 and 2013, Al Perold Building

11:30 – 12:30 Only students admitted for Extended Degree Programmes in Science
Venue Room 1005, Mathematical Sciences & Industrial Psychology Building

13:30 – 15:00 Registration
Venue NARGA, Northern entrance, Administration Block A (see registration programme)

TUESDAY 29 JANUARY

Computer user area registration, orientation and placing; SUNLearn and Library orientation

Surnames A – E
08:00 – 09:40 Room 3011 Natural Science Building, Third floor (NARGA H)
10:00 – 11:00 Library visit, Foyer, Stellenbosch University Library

Surnames F – K
08:00 – 09:00 Library visit, Foyer, Stellenbosch University Library
09:40 – 11:20 Room 3011 Natural Science Building, Third floor (NARGA H)

Surnames L – Q
09:00 – 10:00 Library visit, Foyer, Stellenbosch University Library
11:20 – 13:00 Room 3011 Natural Science Building, Third floor (NARGA H)



Surnames R – Z

11:00 – 12:00	Library visit, Foyer, Stellenbosch University Library
14:00 – 15:40	Room 3011 Natural Science Building, Third floor (NARGA H)

WEDNESDAY 30 JANUARY

Science academic orientation

Surnames A – K

09:00 – 10:00	<i>Amazing race</i>
Venue	Outside (main entrance) of Mathematical Sciences & Industrial Psychology Building
10:30 – 11:30	Tools for your journey
Venue	Room 1005, Mathematical Sciences & Industrial Psychology Building

Surnames L – Z

09:00 – 10:00	Tools for your journey
Venue	Room 1005, Mathematical Sciences & Industrial Psychology Building
10:30 – 11:30	Amazing race
Venue	Outside (main entrance) of Mathematical Sciences & Industrial Psychology Building

THURSDAY 31 JANUARY

08:00 – 16:00	Help with further questions regarding modules and programmes if needed
Venue	Rooms 2012 and 2013, Al Perold Building

EDUCATION



Enquiries	Dr Bernard Rhodes / Ms Juliet Paulse
Tel	021 808 2273 / 021 808 9612
Hours	08:00 – 16:30
Venue	Room 4007, GG Cillie Building

All enquiries regarding the Faculty's Welcoming Programme and academic offerings can be directed to staff at the above-mentioned venue. Please note the times when staff will be available.

THURSDAY 24 JANUARY

Parents' introduction to the faculty

15:00 – 15:30	Water
Venue	Foyer, GG Cillie Building (no 76 on the map)
15:30 – 16:30	Meet the acting Dean, Prof DJ Malan
Venue	Room 3001, GG Cillie Building
16:30 – 17:00	Parents meet lecturers. Enquiries regarding registration, programme and modules
Venue	Room 3001, GG Cillie Building

FRIDAY 25 JANUARY

09:00 – 10:00	Welcoming of new students Meet the acting Dean, Prof DJ Malan • Orientation regarding Faculty of Education and BEd programme • Academic support to newcomer students • Education bursary and time table • Meet the Education Student Committee • General information regarding registration
Venue	Room 1028, GG Cillie Building (no 76 on the map)
10:00	Water
10:00 – 11:30	Enquiries regarding registration, programme and modules
Venue	Room 1028, GG Cillie Building

MONDAY 28 JANUARY

08:00	Academic registration BEd (General Education)
Venue	NARGA, Northern Entrance of Admin A, Ryneveld Street
10:20	Students gather in front of GG Cillie Building (moves as group to HUMARGA)
10:30 – 12:30	Computer registration and orientation (bring student card to registration) • Introduction to HUMARGA computer users' area • Introduction to WebCT • Registration for network use • Completion of Alpha Base Questionnaire
Venue	HUMARGA, Third floor, Arts and Social Sciences Building
12:30 – 16:30	Faculty orientation
Venue	Room 1028, GG Cillie Building

TUESDAY 29 JANUARY

10:00 – 12:20	Visit Stellenbosch University Library (compulsory introduction and orientation). Groups must gather 5 minutes before the time in front of the library.
10:00 – 10:30	Session 1 (surnames A – E)
10:40 – 11:10	Session 2 (surnames F – K)
11:15 – 11:45	Session 3 (surnames L – R)
11:50 – 12:20	Session 4 (surnames S – Z)
14:00 – 16:30	Information session regarding BEd programme • Overview of BEd programme • Arrangements regarding subjects: Afrikaans, English Studies and Information Skills • Programme requirements • Visit to the Education Library (media centre)
Venue	Room 1028, GG Cillie Building

Parking available for residence students in Stellenbosch

As a Stellenbosch University residence student, you can apply for parking on the Stellenbosch campus. Here's how it works:

1

Apply for access to parking on university grounds.

2

You will receive an e-mail in response to your application.

3

Should there be no more parking available at your residence, you can apply for long-term parking away from your residence (but still on university grounds).

GOT THE GO-AHEAD FOR LONG-TERM PARKING?

Great, now all you need to do is register for access to the long-term parking area. Go to www.sun.ac.za/mobility-shuttles and click on the registration block at C5.

Once you've registered, you'll have access to

- ▶ safe, access-controlled parking
- ▶ campus shuttle services (for SU staff and students only) from the parking area to the rest of campus.

SHUTTLE TIMES



DAY

The shuttle runs along the circle route indicated on the map on the right at the following times during the day: 07:00, 13:30, 16:00.



NIGHT

At night, the first trip on the circle route leaves at 18:45, with a new trip each hour, until 01:45.

SHUTTLE ROUTE

1. Lentelus in Hammanshand Road
2. Academia entrance gate
3. Bosman Street, opposite Huis Marais
4. Neethling Street, in front of the Conservatorium
5. De Waal Street, in front of the amaMaties Hub
6. Marais Street, Wimbledon Hub



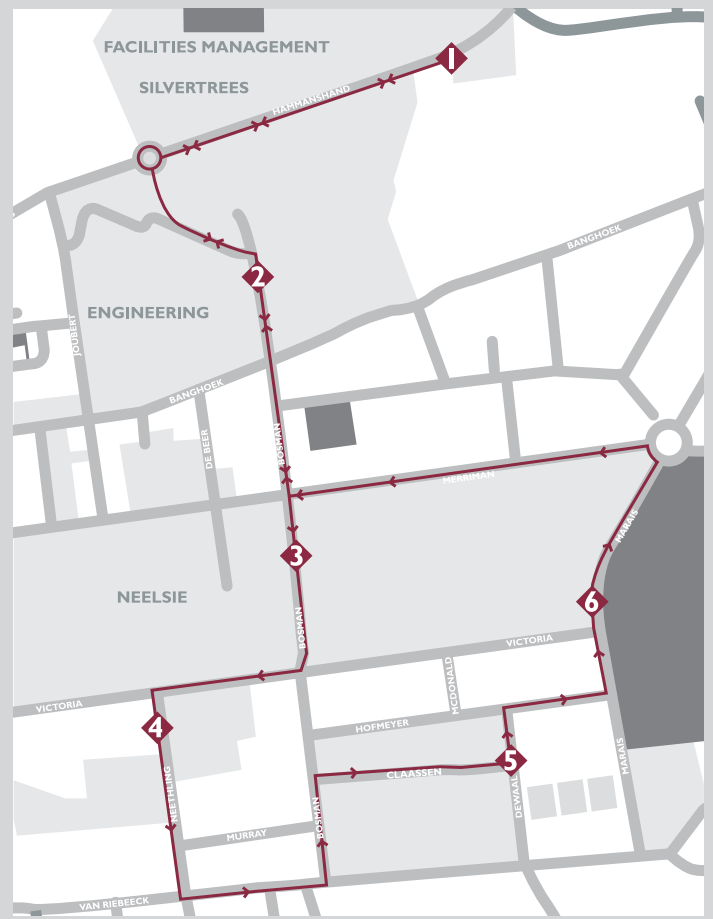
FAQS

What if a friend travelled with me to the parking area?

If the friend is an SU student, they are welcome to swipe their student card to make use of the shuttle service. The service is unfortunately not available to non-SU users.

Why do I have to register?

Registration enables us to stay in contact with you and thereby ensure that the parking and shuttle services meet your needs.



UNIVERSITEIT
STELLENBOSCH
UNIVERSITY

100
1918-2018

Sistemiese
Volhoubaarheid
Systemic
Sustainability

TRANSPORT ON SU CAMPUSES

Get from point A to point B in and around campus without using motor vehicles. This reduces carbon emissions which are detrimental to the environment. There is also definitely not enough parking space available for all the vehicles.

Transport on Stellenbosch campus

Walk



Along various pedestrian routes.

Cycle



Use a Matie Bike or your own bicycle. Register for free to access SU bicycle sheds by sending an e-mail to fiets_bike@sun.ac.za.

Join an existing lift club



Or create your own lift club.

You will save money and protect the environment, and won't have to search for parking on campus.

Parking



Parking is limited. If you have no other alternative than motor vehicle transport, please apply for access to parking.

Use the campus shuttle



Various shuttle services are available. Make sure you choose the right one.

Day shuttle:



Operates from Monday to Friday between **07:00** and **17:30**.

Fixed times and routes, with fixed pick-up and drop-off points as indicated on the website below.

Between general parking areas on periphery of campus and central campus.

Evening shuttle:



For students who study until late at night.

Operates from Monday to Sunday on the hour between **18:00** and **02:00**.

From the main entrance of the Neelsie, within a 6 km radius to private housing in the broader town.

NB: Book your trip online at www.sun.ac.za > My.SUN > Services > Reservations: Shuttle Service

Shuttle service between the long-term parking area and residences:



Available to residence students from Monday to Friday.

Travel ONLY between long-term parking area and residences.

Schedule during the **day**: **07:30**, **13:30** and **16:00**.

In the evening the first trip departs at **18:45**, then every hour until **01:45**.

Residence students can ONLY use the service if they are registered for long-term parking.

Register at www.sun.ac.za/sustainability > Transport.

Show student card.

Visit www.sun.ac.za/sustainability > Transport for the route map.

Visit www.sun.ac.za/mobility-shuttles

Transport on Tygerberg campus

Walk



Along various pedestrian routes.

Join an existing lift club



Or create your own lift club.

You will save money and protect the environment, and won't have to search for parking on campus.

Shopping centre shuttle service



The shuttle runs to a nearby shopping centre at fixed times. Book your trip at www.sun.ac.za > My.SUN > Services > Reservations: Shuttle Services.

Parking



Parking is limited. If you have no other alternative than motor vehicle transport, please apply for access to parking.

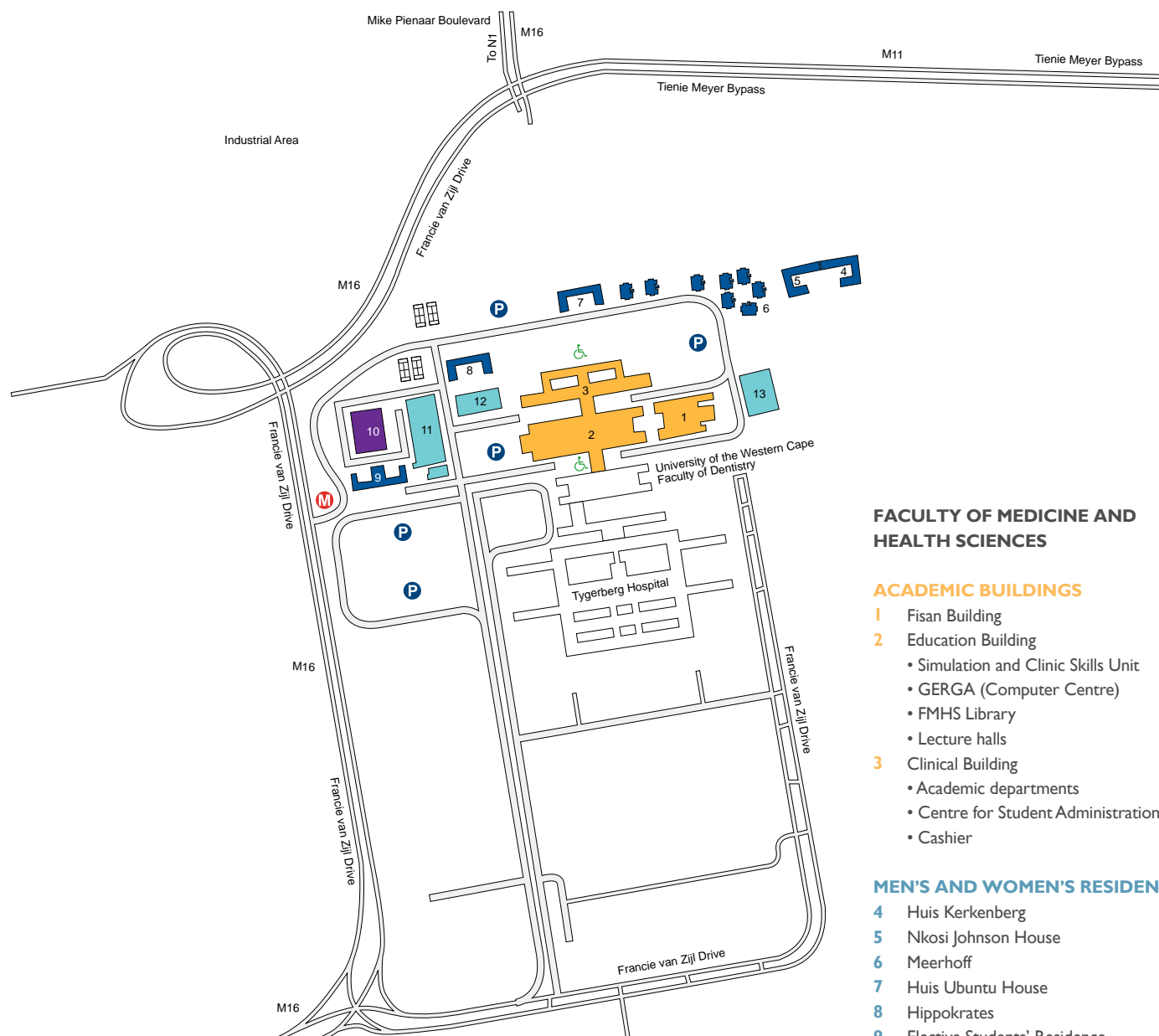


UNIVERSITEIT
iYUNIVESITHI
STELLENBOSCH
UNIVERSITY

100
1918 - 2018

Sistemiese
Volhoubaarheid
Systemic
Sustainability

TYGERBERG CAMPUS MAP



FACULTY OF MEDICINE AND HEALTH SCIENCES

ACADEMIC BUILDINGS

- 1 Fisan Building
- 2 Education Building
 - Simulation and Clinic Skills Unit
 - GERGA (Computer Centre)
 - FMHS Library
 - Lecture halls
- 3 Clinical Building
 - Academic departments
 - Centre for Student Administration
 - Cashier

MEN'S AND WOMEN'S RESIDENCES

- 4 Huis Kerkenberg
- 5 Nkosi Johnson House
- 6 Meerhoff
- 7 Huis Ubuntu House
- 8 Hippokrates
- 9 Elective Students' Residence

WOMEN'S RESIDENCE

- 10 Huis Francie van Zijl

SPORT & RECREATION

- 11 Tygerberg Student Centre
 - Sports Hall
 - Cafeteria
 - Gymnasium
 - Book Shop
 - Tygerberg Student Council (TSC)
- 12 Hippokrates Lawn
- 13 Sports Fields

M Main Entrance from Francie van Zijl Drive

P Parking

Wheelchair access

STELLENBOSCH CAMPUS MAP



INDEX

SUPPORT SERVICES

- 1** Administration, Block A
- 2** Administration, Block B
- 3** Administration, Block C
- 4** SU Library
- 5** Neelsie Student Centre; SRC Office
- 6** Campus Security
- 7** Centre for Student Recruitment
- 8** Centre for Student Counselling and Development: Reception (CSCD)
- 9** CSCD: Office for Students with Special Learning Needs (Disabilities); Den Bosch; Equality Unit
- 10** CSCD: Unit for Psychotherapeutic and Support Services
- 11** Centre for Teaching and Learning
- 12** Division for Student Affairs
- 13** Centre for Student Communities
- 14** Centre for Student Leadership and Structures
- 15** Language Centre: Reading Lab and Language Enrichment Courses
- 16** Campus Health Services
- 17** Maties Sport; Die Stal
- 18** Coetzenburg Centre
- 19** Old Conservatoire
- 20** SU Art Gallery
- 21** SU Museum
- 22** Centre for Learning Technologies: Telematic Services
- 23** IT Hub (Help Centre) and TAS-IT
- 24** Legal Aid Clinic
- 25** Social Impact, Lückhoff School
- 26** Transport Services
- 27** Language Centre: Writing Lab
- 28** Facility Services
- 29** Information Governance
- 30** Purchasing and Provision Services
- 31** Facilities Management; LaunchLab
- 32** Information Technology; LaunchLab
- 71** Stellenbosch University International
- 71** Postgraduates Office

SPORTS FACILITIES

- 33** Danie Craven Stadium
- 34** Coetzenburg Athletics Stadium
- 35** Coetzenburg Tennis Courts
- 36** PSO Club House and Hockey Fields
- 37** Netball Courts
- 38** Swimming Pool
- 39** SU Gymnasium
- 40** Tennis Courts (Residences)
- 41** Old Mutual Sports Centre (squash courts)
- 42** Tennis Courts
- 43** Heidehof Rugby Fields

ACADEMIC BUILDINGS

- 44** Food Science
- 45** PO Sauer
- 46** Electrical/Electronic Engineering
- 47** Civil Engineering
- 48a** Mechanical/Mechatronic Engineering
- 48a/b** Industrial Engineering
- 49** Process Engineering
- 50** Knowledge Centre
- 51** Engineering, General
- 52** Africa Centre for HIV and AIDS Management
- 53** JC Smuts – Biological Sciences
- 54** De Beers – Chemistry
- 55** Mike de Vries
- 56** Chemistry – first-years
- 57** Inorganic Chemistry
- 58** CGW Schumann
- 59** Van der Sterr
- 61** JS Marais
- 62** Polymer Science

- 63** Visual Arts
- 64** JH Neethling
- 65** AI Perold
- 66** Merensky
- 67** Mathematical Sciences and Industrial Psychology
- 68** Nursery
- 69** Natural Sciences
- 70** Chamber of Mines
- 71** RW Wilcocks
- 72** Old Main Building
- 73** Adam Small Theatre
- 74** CL Marais Library
- 75** Journalism
- 76** GG Cillie
- 77** Arts and Social Sciences
- 78** Lombardi
- 79** Konservatorium (University Choir)
- 80** Theology
- 81** Paul van der Bijl Laboratories
- 82** Agronomy
- 83** Welgevallen Experimental Farm
- 84** Sport Science

CLUSTERS: PSOs AND RESIDENCES

Colour Code

 **WOMEN**  **MEN**

 **MEN AND WOMEN**

▲ HUBS

amaMaties

- 92** Erica
- 93** Nemesia
- 94** Serruria
- 95** Tinie Louw dining hall
- ▲ amaMaties-hub: Equité and Libertas PSOs

- 106** Helderberg
- 107** Huis Neethling

Rubix

- 87** Heemstede
- 91** Nerina
- 108** Metanoia
- A** Pieke PSO
- B** Venustia PSO

Validus

- 100** Simonsberg
- 101** Huis Visser
- 102** Huis Marais
- 110** Academia
- 111** Concordia
- 112** Goldfields
- 113** Huis McDonald
- 114** Lobelia
- C** Olympus PSO
- *** ISA (opposite 106)
- *** Nootgedacht (see insert)

VicMeyr

- 88** Huis ten Bosch
- 89** Lydia
- 90** Minerva
- 103** Dagbreek
- 104** Majuba
- D** Aurora PSO

Victoria

- 85** Monica
- 86** Harmonie
- 105** Wilgenhof
- 116** Huis de Villiers

- E** Oude Molen PSO
- F** Silene PSO

Wimbledon

- 96** Sonop (Huis van Niekerk)
- 97** Irene
- 98** Eendrag
- 99** Helshoogte
- 109** Huis Russel Botman House
- ▲ Wimbledon-hub: Vesta and Aristeia PSOs

UNIVERSITY FLATS

- 115** Crozierhof
- 117** Waldenhof

LISTEN, LIVE AND LEARN INITIATIVE

- 118** LLL village
-  LLL houses

FACULTIES (IN COLOUR) AND DEPARTMENTS

Accounting	59
African Languages	77
Afrikaans en Nederlands	77
Agricultural Economics	61
AGRISCIENCES	44, 45, 53, 55, 61, 64, 78, 81–83
Agronomy	82
Ancient Studies	77
Animal Sciences	55
Applied Mathematics	51
ARTS AND SOCIAL SCIENCES	63, 70, 71, 73, 75, 77, 79
Biochemistry	53
Business Management	58
Botany and Zoology	69
Chemistry and Polymer Science	54–57, 62
Computer Science (Math. Sc.)	51
Conservation Ecology and Entomology	61
Drama	73
Earth Sciences	70
ECONOMIC AND MANAGEMENT SCIENCES	19, 52
	58–60, 65, 67
EDUCATION	76, 84
ENGINEERING	47–51
English	77
Food Science	44
Forest and Wood Sciences	45
General Linguistics	77
Genetics	53
Geography and Environmental Studies	70
History	71
Horticulture	78
Industrial Psychology	67
Information Science	77
Institute for Wine Biotechnology	64
Institute for Plantbiotechnology	69
Journalism	75
LAW	72
Mathematics (Math. Sc.)	67
Microbiology	53
Modern Foreign Languages	77
Music	79
Philosophy	77
Physics	66
Physiological Sciences	55
Plant Pathology	78
Political Science	77
Psychology	71
Public Development Management	59
SCIENCE	51, 53–57, 59, 62, 65, 66, 67, 70
Social Work	77
Sociology and Social Anthropology	77
Soil Science	78
Sport Science	84
Statistics and Actuarial Science	59
THEOLOGY	80
Visual Arts	63
Viticulture and Oenology	64