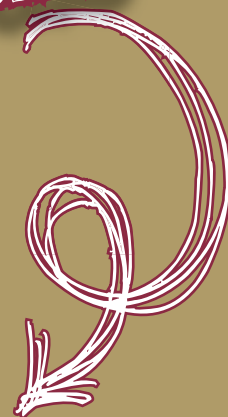




22-31 January 2015

# WELCOMING PROGRAMME

for new students and their parents







Published by Corporate Marketing, Stellenbosch University

Editor: Maretha Joyce

Design: Heloïse Davis

Cover: G Studio

Printing: SunMeDIA

[www.sun.ac.za/welcome](http://www.sun.ac.za/welcome)





## General Information and Stellenbosch Campus

Message: Acting Rector and Vice-Chancellor	5
Outline of the Welcoming Programme	6
Official Welcome	9
Parents' Introduction to Faculties	10
Faculty Programmes	12
What to Expect	15
Registration	17
Listening, Learning and Living Communities (LLL) and Clusters	19
Important General Information	21
AgriSciences	21
Arts and Social Sciences	21
B of Occupational Therapy and B of Speech-Language and Hearing Therapy	21
BAgric (Elsenburg)	23
Career Development	23
Conservation Ecology, Food Science, and Viticulture and Oenology	23
Computers on Campus	23
Computer User Areas (CUAs)	23
Construction on Campus	24
Extended Degree Programmes	24
First-year Academy	24
Insurance: Students and their Property	25
Language Placement Tests	25
Library and Information Service	26
Maties Sport	27
Mentors	27

National Benchmark Tests (NBTs)	27
Parking, Application for Parking and Transport	27
Postgraduate and International Students	28
PSO Students older than 25	28
PSO Transport Service and Accommodation	28
Societies	28
Special Learning Needs (Disabilities)	29
Wellness of all Students	29
Campus Security	31
Sustainability	33
Campus Health Service	35
Important Numbers	36
Emergency Numbers	37
Stellenbosch Campus Map	38

## Tygerberg Campus

Parents meet the Dean	44
Outline and Programme	45
Registration	48
Important General Information	49
Language Placement Tests	49
Extended Degree Programmes	50
Parking, Application for Parking	50
Important Numbers and Emergency Numbers	51
Tygerberg Campus map	52

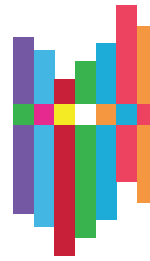
First-year Camps	53
------------------	----

## How to use this book

All first-year students and their parents should read this information booklet before Thursday, 22 January 2015 to familiarise themselves with the programme and logistical arrangements such as parking and venues.

Please bring the booklet along to campus.





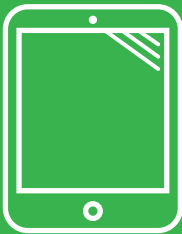
Studente  
**Tegnologie**  
Program

Student  
**Technology**  
Programme

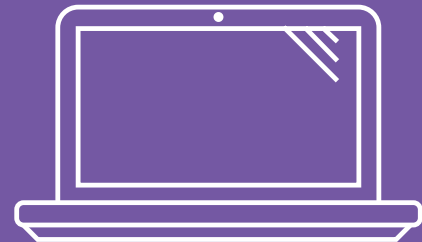


**NUWE tegnologie**  
**vir NUWE Maties –**  
**word deel!**

**NEW technology**  
**for NEW Maties –**  
**get with the**  
**programme**



**Tablets**



**Laptops**

Vir meer inligting kontak  
For more information contact  
**IT HUB 021 808 9289**



student@sun.ac.za  
www.sun.ac.za/ithub  
**www.stp.ac.za**



UNIVERSITEIT  
STELLENBOSCH  
UNIVERSITY



Dear Matie

Welcome to our family. Thank you for choosing Stellenbosch University (SU) to prepare you for your future. Among the reasons for your choice are probably our excellent academic offering and our vibrant student life. This is the Matieland experience!

You are joining an institution that educates thought leaders for the future. At SU we cultivate innovative thinking and responsible leadership. Our vision is to become more inclusive, innovative and future-focused. We will achieve this by broadening access to the University, maintaining our excellence and increasing our impact on society.

SU is among the top 300 universities in the world according to the Times Higher Education World University Rankings 2014-15. These rankings measure a university on the basis of its teaching, research, knowledge transfer and international outlook. On the cultural front we had many highlights in 2014, among them the Stellenbosch University Choir's record of 99% in the category for Mixed Choirs at the World Choir Games held in Riga, Latvia. The choir was named champions in three categories. These examples illustrate the University's excellence across a broad range of activities.

SU is also a leader in the field of student support and we boast an average first-year success rate of 86% over the past few years against the national average of 50%. Make sure you know what assistance is available and where to find it. Do not delay. Be sure to ask for help sooner rather than later. If you work hard and make use of the available support, there is no reason why you cannot succeed.

We believe that inclusivity and diversity promote excellence. Mutual respect, understanding and empathy for each other's differences and opinions go hand in hand with this. And these form the basis of the campus culture that we want to create. Comments and jokes may seem harmless from your frame of reference, but could be offensive to a fellow student.

Exciting new experiences await you, and to prepare yourself, I would recommend this booklet as well as the welcoming programme, which you'll receive upon your arrival in January 2015. Our welcoming programme has been carefully designed to meet your needs and make your adjustment easier. If you fully utilise the academic introductory sessions, you will be properly prepared once lectures start.

The Maties student experience is not limited to University residences. Residences and private wards have been grouped together in clusters, with a hub that serves as a social and academic gathering place. Find your 'home' on campus, and join in. But remember that you are not forced to participate in any group or residence activity. If something bothers you, please feel free to politely say that you prefer not to participate. Also feel free to report any complaints. If the problem is not resolved to your satisfaction, the Vice-Rector: Learning and Teaching, and the University's ombudsman may be contacted. The contact information is available in this booklet and on the University's website ([www.sun.ac.za](http://www.sun.ac.za)).

Stellenbosch is not a safe enclave that escapes the current crime trends in our country. It actually is a place where thousands of smartphones, computers and cars converge: all items with a resale value that attract criminals. Therefore the same precautions that you would take to ensure your safety elsewhere in the country, should be applied here in Stellenbosch also: more information is available at [www.sun.ac.za/safety](http://www.sun.ac.za/safety) and elsewhere in this booklet.

I do believe you will forge lasting connections with your fellow students in the coming years and will enjoy the maximum benefits the available opportunities offer you, allowing you to one day look back with appreciation on your time spent here as the best years of your life.

With best wishes

Prof Leopoldt van Huyssteen  
Acting Rector and Vice-Chancellor





# OUTLINE

## Stellenbosch Campus Welcoming Programme

( academic,  
general and  
social integration )

22 – 31 January

This is only an outline of the programme. All new students will receive the comprehensive welcoming programme upon arrival on campus in January.

### THURSDAY 22 JANUARY

- 08:00 – 12:30** New students report to residences and PSO wards  
Parents' meetings as arranged
- 12:00 – 13:00** Information session for Recruitment Bursary candidates (Stellenbosch campus only)
- 12:30 – 15:00** Walk in session for students with Special Learning Needs (Disabilities) and their parents
- 15:30 – 16:30** Compulsory session for AgriSciences students
- 14:00 – 17:00** Parents' introduction to faculties (excluding students except where indicated otherwise)
- 17:00 – 18:00** 'Dream Launch'
- 18:00 – 19:00** **OFFICIAL WELCOMING**

### FRIDAY 23 JANUARY

- 08:00 – 12:00** Cluster morning for all new students
- 13:30 – 16:30** Faculty meetings in various faculties
- 14:30 – 16:00** Compulsory session for all Arts and Social Sciences
- 14:00 – 16:00** Academic registration of new first-year students for the B of Occupational Therapy and Speech-Language and Hearing Therapy programmes who could not self-register

### SATURDAY 24 JANUARY

- 09:00 – 12:00** Compulsory Language Placement Tests: All faculties, except Tygerberg
- 14:00 – 20:00** Societies Fair and Pool Party



# PROGRAMME OUTLINE

## MONDAY 26 JANUARY

**08:00 – 17:00** Academic registration / CUA registration / faculty meetings / library visits

## TUESDAY 27 JANUARY

**08:00 – 17:00** Academic registration / CUA registration / faculty meetings / library visits

## WEDNESDAY 28 JANUARY

**08:00 – 13:00** CUA registration / faculty meetings / library visits

**16:00 – 18:00** Sports club meetings with sports managers for prospective club members

## THURSDAY 29 JANUARY

**09:00 – 12:00** Community interaction and development (participation in various activities and projects in the community by students and staff)

## FRIDAY 30 JANUARY

**18:00 – 23:00** “Vensters” street theatre

## SATURDAY 31 JANUARY

Closure functions of clusters and residences as arranged by clusters/residences

**OFFICIAL WELCOMING PROGRAMME FOR NEW STUDENTS ENDS**

## MONDAY 2 FEBRUARY

Official commencement of classes for both new students and seniors





# Be a clever piggy.

Enjoy fantastic savings on our new and second hand books  
and make use of our student accounts.



We do it differently

**PROTEA**  
**BOOKSHOP**

t: 021 882 9101/5 • f: 021 882 9110 • e: [proteaboek@mweb.co.za](mailto:proteaboek@mweb.co.za)  
Bergzicht Plaza, Andringastraat, Stellenbosch



The official welcome of new students (Stellenbosch campus, Tygerberg campus and Faculty of Military Science) and their parents, student leaders and staff will take place at 18:00 in the Danie Craven stadium. The pre-programme (Dream Launch), organised by MAD<sup>2</sup> starts at 17:00, also in the stadium.

## Dream Launch

This event will be the start of an exciting welcoming week where first year students will each receive a balloon on which they can write their dreams. The more or less 5 000 balloons will be released into the air during the official opening in the Danie Craven stadium. The aim of this event is to create a sense of unity and belonging, to set your own objectives and to dream big. This will also show the rest of Stellenbosch that the new Maties are in town!

## Parking arrangements

Parents are kindly requested to park at the Coetzenburg sports fields and the Coetzenburg Centre near the Danie Craven stadium for their introduction to the faculties as well as the official welcoming event. Parking on the central campus is limited, and in support of our environment we request that parents park at Coetzenburg and walk to the venues where the introduction to the faculties will take place. Most venues are within walking distance. See the table on p 10 for time slots of the meetings, as well as the map on p 38 to determine the location of the venues.

The Faculty of Engineering is the only exception. It is too far from Coetzenburg to walk, but parking is available at the faculty. Parents should take traffic congestion into consideration when driving to Coetzenburg after meeting with the dean.

## Traffic congestion

Please take the high volume of traffic on all access routes to Stellenbosch, in town and at Coetzenburg into account when planning travelling time, parking and walking distance to the different venues. The pre-programme for students will start at 17:00 and we suggest that you take your seat as soon as possible after your introduction to the faculty, to enjoy that part of the programme. Comfortable clothes, walking shoes, a hat and a bottle of water are also recommended. It can be very windy at Coetzenburg: a light jacket or windbreaker may be a good idea.

# WELCOMING

## of new students and their parents at

# DANIE CRAVEN STADIUM

Thursday, 22 January 18:00 – 19:00

## Shuttle service

A shuttle service will operate in a circular route from the parking area at the Coetzenburg Centre to the Konservatorium (Conservatoire of Music) on the corner of Neethling and Victoria streets. Parents and students who have difficulty walking are welcome to make use of this service. Look out for the vehicles with a Maties bus or Stellenbosch University logo.

## Whisper interpreters

Stellenbosch University wants to welcome new students and their parents in a language-friendly manner. Whisper interpreters and senior students (with neon-coloured bands) will assist those who do not understand Afrikaans. If you would like to make use of this service, it is recommended that you take up a seat on the main stand as early as possible. An announcement will be made regarding the interpreting service and where the earphones may be obtained.

## Information officers

Information officers (dressed in clearly visible T-shirts) will be at Coetzenburg and on the central campus. Please ask them for assistance or directions. The Administration B building (Victoria Street opposite Wilgenhof) and the Administration A building (on the T junction of Ryneveld and Crozier streets) both have an enquiries desk.



# Parents' INTRODUCTION to FACULTIES

(excluding students,  
except where  
indicated otherwise)

Thursday, 22 January

AgriSciences	14:30 – 15:20	Parents meet the Acting Dean, Prof Danie Brink Venue: Lecture Room 1002, JS Marais building (no 61 on the map)
	15:20 – 16:30	Parents visit departments Venue: Parents will be accompanied from the JS Marais building to the various departments
Arts and Social Sciences	14:00 – 15:00	Parents of BA (Sport Science) students meet lecturers Venue: Hall A, Sport Science building (no 84 on the map)
	15:30 – 16:30	Parents meet the Dean, Prof Johan Hattingh Venue: Paul Roos hall, Paul Roos Gymnasium (bottom right on the map)
B of Occupational Therapy and B of Speech Language and Hearing Therapy	15:30 – 16:30	Parents AND NEW STUDENTS meet with the Executive Head, Interdisciplinary Health Sciences, Prof Usuf Chikte Venue: Lecture hall 201, Sports Science building, Coetzenburg (no 84 on the map)
Economic and Management Sciences	15:30 – 16:30	Parents meet the Dean, Prof Stan du Plessis Venue: Coetzenburg Centre, Coetzenburg (no 18 on the map)
Education	15:00 – 15:30	Cool drink and water Venue: Foyer, Room 3001, GG Cillie building (no 76 on the map)
	15:30 – 16:30	Parents meet the Dean, Prof Maureen Robinson Venue: Room 3001, GG Cillie building
	16:30 – 17:00	Parents meet lecturers / opportunity for asking questions Venue: Room 3001, GG Cillie building





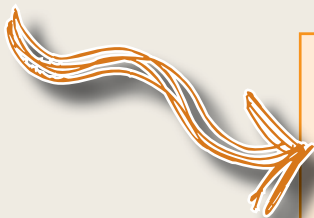
# PARENTS MEET WITH DEANS

Engineering	15:30 – 16:30	Parents (Afrikaans) meet the Dean, Prof Hansie Knoetze Venue: Reitz hall, General Engineering building (no 51 on the map)
	15:30 – 16:30	Parents (English) meet the Vice-Dean, Prof Anton Basson Venue: Room A303B, General Engineering building
Law	14:30 – 15:30	Parents meet the Dean, Prof Sonia Human Venue: JC de Wet hall, Ou Hoofgebou (no 72 on the map)
	15:30 – 16:30	Parents – Opportunity for individual questions Venue: JC de Wet hall, Ou Hoofgebou
Sciences	14:00 – 14:30	Assistance available to parents with individual questions regarding modules and programmes Venue: Foyer, Mathematical Sciences & Industrial Psychology building (no 67 on the map)
	14:30 – 16:00	Parents meet the Dean, Prof Louise Warnich Venue: Mathematical Sciences & Industrial Psychology building, Lecture hall 3001 (Afrikaans) OR Lecture hall 1005 (English)
Theology	15:00 – 16:00	Parents meet the Dean, Prof Nico Koopman Venue: Attie van Wijk Auditorium, Faculty of Theology (no 80 on the map)





## for NEW STUDENTS



Friday, 23 January

Take note: There are also compulsory meetings for students on Monday, Tuesday and Wednesday, 26 – 28 January. Students will receive the comprehensive programme upon arrival on campus.

### AGRISCIENCES

It is compulsory for all AgriSciences students to follow the full programme.

Students who follow the programmes BSc Food Science, BSc in Conservation Ecology, BScAgric Viticulture and Oenology General and BScAgric Oenology Specialised follow the Faculty of AgriSciences welcoming programme.

The programme Agricultural Production and Management (BAgric) is being offered in collaboration with the Cape Institute for Agricultural Training: Elsenburg. Students receive their training at Elsenburg campus and follow the Elsenburg welcoming programme (enquiries: 021 808 5457).

**08:00 – 12:00** Cluster meeting  
**14:00 – 17:00** **Compulsory** for all students  
 Presentation of Academic Programmes  
 (all programmes: Plant and Soil Sciences; Food and Wine Production Systems; Animal Production Systems; Agricultural Economics and Management;

Forestry and Natural Resource Sciences; Conservation Ecology)  
**Venue** Lecture room 1002, JS Marais building (no 61 on the map)

### ARTS AND SOCIAL SCIENCES

**08:00 – 12:00** Cluster meeting  
**14:30 – 16:00** **Compulsory session:**  
 All Arts and Social Sciences' students with a **NSC average of between 57% and 59,9%** meet the First Year Academy about the extended degree programme (EDP) (see p 24 for more information)  
**Venue** Room 1012, RW Wilcocks building (no 71 on the map)  
**14:00 – 16:00** Information kiosk for unsure and/or confused students  
**Venue** Foyer, RW Wilcocks building

**PLEASE NOTE:** The official welcoming programme of the Faculty of Arts and Social Sciences starts on **Monday 26 January from**



**09:00 until 17:00.** Students meet according to their programmes in the following venues:

- **Room 3001, RW Wilcocks building:**  
BA in Humanities
- **Room 1001, RW Wilcocks building:**  
BA in Language and Culture; BA in Social Dynamics; BA in Drama and Theatre Studies; BMus; BA in Music; BA in Visual Arts; Higher Certificate in Music; Diploma in Practical Music
- **Room 1012, RW Wilcocks building:**  
B of Social Work; BA in Human Resource Management; BA in Socio-Informatics; B of Occupational Therapy; B of Speech, Language and Hearing Therapy
- **Room 1028, GG Cillié building (no 76 on the map):**  
BA in Sport Sciences; BA in International Studies; BA in Development and Environment; BA in Political, Philosophical and Economic Studies

## ECONOMIC AND MANAGEMENT SCIENCES

**08:00 – 12:00** Cluster meeting  
**14:00 – 15:30** Information session

**All new students in the following programmes attend this session:**

BAcc, BCom (Fin Acc), BCom (Management Accounting), BCom, BCom (EDP), BCom (Management Sciences), BCom (Economic Sciences), BCom (Math Science), BCom (Industrial Psychology), BCom (Act Science)

**14:00** Welcoming and introduction of the Dean by the Chairperson: Economic and Management Sciences Student Committee (EMSC)  
**14:10** Welcoming by the Dean, Prof Stan du Plessis  
**14:15** Vice-Dean, Prof Ronel du Preez (Teaching)  
**14:20** Faculty Secretary, Ms Nazli Daniels  
Programme choices, admission requirements,

language practice, and registration procedure  
**14:45** Faculty Manager, Mr MJ Brooks  
Timetables, facilities and other necessary information  
**15:00** Question and answer session (optional).  
First-year lecturers from the various departments will be available to answer the individual questions of students  
**Venue** Dutch Reformed Church (Kruiskerk), at the corner of Victoria- and Ryneveld Street (see map on p 38)

## EDUCATION

**08:00 – 12:00** Cluster meeting  
**14:00 – 15:00** Welcoming

- Meeting with the Dean, Prof Maureen Robinson
- Orientation regarding Faculty of Education and BEd programme
- Academic support to newcomer students
- Education bursary and time table
- Meeting with the Education Student Committee
- General information regarding registration

**Venue** Lokaal 1028, GG Cillié-gebou (nr 76 op die kaart)

**15:00** Cool drinks  
**15:00 – 16:30** Enquiries regarding registration, programme and modules  
**Venue** Foyer, GG Cillié building

## ENGINEERING

**08:00 – 12:00** Cluster meeting  
No formal programme for the rest of the day



## LAW

- 08:00 – 12:00** Cluster meeting  
Students in the programmes LLB, BCom (Law), BA (Law) and BAccLLB
- 14:00 – 14:45** Welcoming by the Dean  
**Venue** Room 3001, RW Wilcocks building (no 71 on the map)
- 14:45 – 15:45** Information session: General background and practical information for new students (the University, the Faculty of Law, members of staff, administrative and support services)  
**Venue** Room 3001, RW Wilcocks building
- 15:45 – 16:30** Opportunity for individual enquiries, Ms Karin Wiss, Mr Bradley Greenhalgh & Mr Shirle Cornelissen  
**Venue** Room 3001, RW Wilcocks building

## SCIENCES

- 08:00 – 12:00** Cluster meeting  
**13:30 – 14:50** Welcoming
- Meeting with the Dean, Prof Louise Warnich
  - Orientation regarding programme offering of the Faculty
- Venue** Mathematical Sciences & Industrial Psychology building (nr 67 on the map), Lecture hall 3001 (Afrikaans) OR Lecture hall 1005 (English)
- 15:00 – 16:00** Guidance to students according to programme
- Programme** Human Life Sciences (Biology) and (Biology with Psychology)
- Venue** Lecture hall 1005, Mathematical Sciences & Industrial Psychology

**Programme Plek** Molecular Biology and Biotechnology  
Lecture hall 201, JC Smuts building (no 53 on the map)

**Programme Venue** Biodiversity and Ecology  
Lecture hall 2020, Natural Sciences building (no 69 on the map)

**Programme** Sport Science  
Organisation of the Sport Science practical programme, timetable and the ordering of Sports Science uniforms (compulsory)  
**Venue** Lecture hall 203, JC Smuts building

**Programme Venue** Physics  
Lecture hall Beta 3002, Merensky building (no 66 on the map)

**Programmes Venue** Mathematical Sciences  
Lecture hall 3001, Mathematical Sciences & Industrial Psychology building

**Programmes Venue** Chemistry  
Room 2003, De Beers building (no 54 on the map)

**Programmes Venue** Earth Science and Geo-informatics  
Lecture hall 1004, Chamber of Mines building (no 70 on the map)

## THEOLOGY

- 08:00 – 12:00** Cluster meeting  
**14:00 – 15:00** General orientation to the faculty  
**Venue** Hofmeyr Hall, Faculty of Theology
- 15:00 – 15:30** Undergraduate bursary office  
**15:30 – 16:30** Identity vs Identity - Theology Student Committee



## Your journey to academic success STARTS HERE...

University is not a super high school – it is something entirely different. Therefore, do not expect your welcoming at SU to be anything like your welcoming at a high school or school hostel.

The welcoming period is the start of your journey to academic success. This learning journey continues for as long as you study at Stellenbosch University (SU). In the welcoming week already, you start to integrate the various parts of your life at SU, and you will learn that the residences, PSO wards and clusters are value-driven environments characterised by hospitality, friendliness and dignity.

As first-year student, you enter a phase of rapid development. Remember, your social and emotional adjustment to the university experience constitutes an integral part of your learning journey and personal development. In particular, keep the following in mind:

A first-year experiences a period of intense change, during which 'familiar' attitudes, values and behaviour patterns are often adjusted and developed. This also facilitates the development of challenging and inspiring thought patterns. (Research shows that you and your fellow first-years are more susceptible to change during the welcoming period than in any other stage of your university careers.)

Your introduction to social and community structures during the welcoming week is important. These include structures such as clusters, residences, PSO wards, mentor groups, faculties (such as study and tutor groups), sport clubs and societies.

Role models who live by the University's values and achieve success on their learning journeys may be of great value to you.

As part of the welcoming programme, it is extremely important for you to adhere carefully and timeously to the administrative and academic requirements of your faculty. This will ensure that you are ready for the commencement of the academic part of your learning journey on the very first day of class.

The two most important development phases of a first-year's learning journey are:

- coping with freedom (when and how to say no); and
- negotiating on your own behalf.

Start with these in the welcoming week already. Measure everything in the welcoming programme against the following questions, and ask yourself how the various aspects of the welcoming programme fit into the bigger picture. Remember, this includes everything, even your own decision sometimes not to participate in activities:

- How does this promote my journey to successful studies (learning journey)?
- Does it introduce me, as a first-year, to positive social relations/groups?
- Does it contribute to emotional stability and emotional development?
- Does it help me to join sound listening, living and learning communities, and encourage me to participate both independently and interdependently?
- Does it create a relaxed, safe and constructive listening, living and learning space, where I can get clarity on the nature, content, choice and form of my learning journey?



# CAMPUS SURVIVAL 101

Some things you'll need to make a roaring success of your varsity life



## THE BOOKS

'Cause studying is, after all, the reason you're here. Well, mostly...



## THE ACCESSORIES

You might as well look good while you carry your books around.



## THE GADGETS

In today's world you need more than just a pen and notebook. Connect with the world in the electronic age.



## THE STATIONERY

You never know when that crush of yours will unexpectedly run out of ink and need to borrow a pen...

We know that your first year on campus can be overwhelming. With our wide range of academic & other books, stationery, electronics, computer accessories, lifestyle products and e-textbooks, Van Schaik Bookstore is the best new friend you'll make this year. Come on over and find everything you need.





# TWO OPTIONS to register as student

There are two different options available for you to officially register as a student of Stellenbosch University in January 2015, namely self-registration (e-registration), or by using the registration process in NARGA on the Stellenbosch campus, that takes place during the welcoming programme according to a fixed schedule per faculty.

It is important that you consult the notice on registration that will be sent to you separately by the Registrar of the University, as all the information that you need to decide whether you want to register yourself, or whether you rather want to register in NARGA during the welcoming programme, will be given in the notice. All the necessary dates, times, documentation required and other important information will be contained in the notice. **The system for self-registration will be accessible from 14 to 29 January.** If you have done the National Senior Certificate or the IEB-certificate, you will be able to register yourself. Candidates from other school systems cannot make use of self-registration.

Self-registration can be done from any computer with access to internet on [www.mymaties.com](http://www.mymaties.com). We wish to urge you to use this option, as you will know before leaving for Stellenbosch whether you meet the admission requirements of the study programme to which you were provisionally admitted and, if so, that you were finally accepted and registered as student. You will then just have to acquire your student card at the Student Centre (Neelsie) in Stellenbosch, in the time slot determined for your faculty's registration in NARGA. **It is, however, important that you attend the full welcoming programme.**

If you cannot or do not want to register yourself, you must consult the notice on registration that will be sent to you to ensure that you report for registration at the right

date and time at NARGA, with all the necessary documents that are required (see further on for documents required).

NARGA-registration at the Stellenbosch campus is scheduled for **Monday 26 and Tuesday 27 January**. Please note that first-year students who have not registered on these dates and who obtain special permission to register late, will have to register later in the course of that week in NARGA together with the senior students of their faculty. First-year students, who register later than that, will be charged a levy of R500.

If you do not register yourself, it is your responsibility to ensure that you comply with all the admission requirements of your study programme before you leave for Stellenbosch. If you are going to register in NARGA, you must show the following original documents when you report for registration in your faculty's allotted registration time slot:

1. Advice of Results of the 2014 NSC or IEB final school-leaving examination.
2. NSC or IEB candidates who matriculated in 2013 or earlier: National Senior Certificate.
3. Candidates from other school systems: School-leaving certificate/s and certificate of university exemption issued by the SA Matriculation Board.
4. Candidates who studied at other universities: The document/s mentioned at 2 or 3 above, as well as a full academic record and a certificate of good conduct issued by the university concerned.
5. If you are not a South African citizen: a valid study permit.

Please take note of the notice regarding the writing of the National Benchmark Tests (see p 27).





**STELKOR**  
PHARMACY • APTEEK

open daily from 08:00 - 20:00,  
as well as emergency hours  
on weekends and holidays.

TEL: 021 88 33 162

**STELKOR MEDICAL CENTRE**  
**A PHARMACY, DOCTORS AND A DENTIST ALL UNDER ONE ROOF!**

VISIT A BRANCH NEAR YOU



**SIMONSRUST PHARMACY**  
TEL: (021) 886 8354



**CAMPUS PHARMACY**  
TEL: (021) 887 2725



- accounts for students and scholars
- free delivery
- contracted in with most medical aids
- clinic for flu and vitamin injections, general consultations
- skin care products
- health shop

E-MAIL: [INFO@STELKOR.CO.ZA](mailto:INFO@STELKOR.CO.ZA) | [WWW.STELKOR.CO.ZA](http://WWW.STELKOR.CO.ZA) | FIND US ON FACEBOOK





All Stellenbosch clusters will meet on  
Friday 23 January from 08:00 – 12:00

New students join a campus that has been organised into listening, learning and living communities (LLL). The clusters, residences, organisation for non-residence students (PSO), mentor groups, tutor groups and the listening, learning and living houses for senior students all form part of LLL. An LLL purpose is to integrate the out-of-class experience with the in-class experience to ensure academic success and a well-rounded education for students. That is also a core focus of the First-year Academy (FYA). (See p 25 for more on the FYA.)

## CLUSTERS

A cluster is made up of a number of residences that are geographically close to one another as well as a PSO ward or two. Clusters play a significant role in the integration and support of new students on campus and ensure that students experience the University as a caring and nurturing place. They also integrate the university experience of residence students, day students and students in private accommodation.

**Mentors** are appointed to support new students in adjusting to university life and are allocated in cluster context. **Find out who your mentor is as soon as possible.** Clusters are increasingly used as a way of organising the University, for example, Faculties now tend to employ clusters as a basis on which to form subject tutor groups.

The residences and the PSO wards belong to one of six clusters on Stellenbosch campus. Tygerberg campus forms a seventh cluster.

## CLUSTER MEETING (Stellenbosch campus)

Students (both residence and PSO) meet in their clusters to learn how their social integration at the University could support their academic success. Students will meet others in their cluster who follow the same programmes and learn how they could become involved in the ResEd initiative as well as how their mentors could assist them. In addition, they will be introduced to the academic support groups at the University, such as the First-year Academy (FYA) and the Academic Affairs Council (AAC).

## HOW CAN PSO STUDENTS (NON-RESIDENCE STUDENTS) BECOME INVOLVED?

The members of the Private Student Organisation (PSO) are students who do not live in residence – approximately 70% of all the University's students. This organisation involves students in social and academic events on campus in the same way a residence would have done. The PSO ward does not provide accommodation to members, but PSO students may use their student cards to book meals to have at a residence in their particular cluster.

There are ten PSO wards on Stellenbosch campus and one on Tygerberg campus. New students are randomly divided into PSO wards. Students are notified in writing or by SMS of the specific PSO ward to which they have been allocated. Together with the residences, PSO wards form clusters. The PSO ward to which a student has been allocated also determines the cluster to which that student belongs. Should you not receive any notification of your PSO allocation, please contact Client Services on tel 021 808 9111 or [info@sun.ac.za](mailto:info@sun.ac.za).

## COMPOSITION OF CLUSTERS

<b>amaMaties</b>	Erica, Helderberg, Huis Neethling, Nemesia, Serruria and the PSO wards, Equité and Libertas
<b>Rubix</b>	Heemstede, Metanoia, Nerina and the PSO wards Pieke and Venustia
<b>Tygerberg</b>	Hippokrates, Huis Francie van Zijl, Kerkenberg, Meerhoff, Ubuntu House and the PSO ward Osler
<b>Validus</b>	Academia, Botmashoogte, Concordia, Goldfields, Huis MacDonald, Huis Marais, Huis Visser, ISA, Lobelia, Nooitgedacht, Simonsberg and the PSO ward Olympus
<b>VicMeyr</b>	Dagbreek, Huis ten Bosch, Lydia, Majuba, Minerva and the PSO ward Aurora
<b>Victoria</b>	Harmonie, Huis de Villiers, Monica, Wilgenhof and the PSO wards Oude Molen and Silene
<b>Wimbledon</b>	Eendrag, Helshoogte, Irene, New Generation Residence, Sonop and the PSO wards Aristea and Vesta





## STUDIOSONPARK

STUDIOVJF - FUN, SAFE, QUIET

5 Verreweide Road , Stellenbosch



**Studios (26m<sup>2</sup> - 27m<sup>2</sup>) are selling  
from R1,265,000 - R1,360,000**

(VAT & transfer costs included)



**Rental income: R6,800 - R 7,200 (All services included)**

## THE CONCEPT

- A fully serviced, 24 hour security complex
- Set in lush landscaped gardens
- Within walking distance from campus
- Chic, modern furnished Studios with DSTV and wifi
- A quiet study environment
- CCTV cameras and panic buttons
- Safe basement or shaded parking and bicycle storage

## Call today to make an investment!

Yolandé Visser  
082 579 0560

T: +27 21 887 4740  
[www.annabasson.co.za](http://www.annabasson.co.za)  
[info@annabasson.co.za](mailto:info@annabasson.co.za)

## LET US MAKE FURNISHING YOUR APARTMENT **EASY!**



**FSR**  
**Fresh Start Rental**  
Renting Essentials Made Easy



- Saving you HOURS of your time.
- Up to 50% SAVING compared to other retail stores.
- FREE DELIVERY directly to your door.
- EASY online order process and payment options
- No stress or hassle.
- BUY or RENT.

**Contact us TODAY** to avoid disappointment!

27 21 828 2649 or 27 83 391 2729

[connie@freshstartrental.com](mailto:connie@freshstartrental.com)

[www.freshstartrental.com](http://www.freshstartrental.com)



•Crockery • Cutlery • Cookware • Bedding • & More



# IMPORTANT

## General Information

### AGRISCIENCES

#### Compulsory session on Thursday 22 January for:

- students with aggregates of between 55% and 59% (final Grade 12 results) and/or
- students with aggregates of between 55% and 59% for Mathematics and/or
- students who are provisionally accepted for the Extended Degree Programme (EDP)

**Time** 15:30 – 16:30

**Venue** Lecture Room 1002, JS Marais building (no 61 on the map)

**Enquiries** Dr Natasja Brown, tel 021 808 2015

will be registered for the correct programmes or modules according to Calendar regulations.

**Time** 14:30 – 16:00

**Venue** Room 1012, RW Wilcocks building (no 71 on the map)

**Navrae** Ms Anita Jonker, tel 021 808 2081

Ms Taryn Bernard, tel 021 808 2146

Ms Shaona Lombard, tel 021 808 2513

Prof Christine Anthonissen, tel 021 808 2006

### ARTS AND SOCIAL SCIENCES

#### Compulsory session on Friday 23 January for:

- All prospective students with matric averages of between 57% and 59,9%.
- This session will be used to convey information on the compulsory Extended Degree Programme (EDP) for candidates whose Grade 12 averages are between 57% and 59,9%.
- This session specifically takes place prior to registration to ensure that students are properly advised and

### B OF OCCUPATIONAL THERAPY AND B OF SPEECH-LANGUAGE AND HEARING THERAPY

Please note that students in the programmes B of Occupational Therapy and B of Speech-Language and Hearing Therapy join the programme of the Faculty of Arts and Social Sciences for the duration of the welcoming programme, except for the meeting with the Dean (see p 10) and registration, for which other arrangements will be made. (For more details on registration, please consult the notice in this regard that will be sent to you separately.)

B of Occupational Therapy students also have a session at the Tygerberg campus on **28 January from 09:00 until 16:00**. Report to room 1018, Division of Occupational Therapy, Education Building (no 2 on the map), Tygerberg campus.



# IT HUB

work . play . connect

## WHERE TECHNOLOGY LIVES

IT HUB, Information Technology's brand new, modern, **one stop walk-in centre** will sort out your **technological gremlins** and **other nasties** in no time.

Visit us at [www.sun.ac.za/ithub](http://www.sun.ac.za/ithub) or in the Admin A building (entrance below the bridge on the Rooiplein)



**MATIES**  
VIR ALTYD • FOREVER



Students in MB, ChB, BSc in Physiotherapy, and BSc in Dietetics join the programme on Tygerberg campus (see p 45).

## BAgric (Elsenburg)

The programme Agricultural Production and Management (BAgric) is presented in collaboration with the Cape Institute for Agricultural Training: Elsenburg. Students receive their training at Elsenburg, and will therefore also follow the Elsenburg welcoming programme.

**Enquiries:** Desiree Chinasamy-Dampies, tel 021 808 5457 or DesireeCD@elsenburg.com

Visit the website for more information:  
www.elsenburg.com.

## CAREER DEVELOPMENT

Prospective students are encouraged to start a career development process as early as possible, before they register. An informed career choice (and thus the choice of a suitable study programme) depends on extended self-knowledge and knowledge of the world of work. Psychologists who specialise in career counselling can assist you in this process. Please feel free to contact the Centre for Career Advice at tel 021 808 9543 or info@sun.ac.za for an appointment with a registered psychologist.

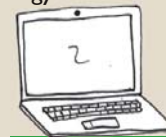
First-year students can also make use of the service of the Centre for Student Counselling and Development (CSCD) for further support in their career development process. It can include confirmation of a possible programme choice as well as a possible change of programme choice.

Stellenbosch students can contact the CSCD at tel 021 808 4707 or visit them at 37 Victoria Street (no 8 on the Stellenbosch campus map) to make an appointment.

Tygerberg students can contact the CSCD at tel 021 938 9590 at the Tygerberg office or visit them on the 3rd floor of the Tygerberg Student Centre (no 10 on the Tygerberg campus map) to make an appointment.

## CONSERVATION ECOLOGY, FOOD SCIENCE, AND VITICULTURE AND OENOLOGY

Students who intend studying the programmes BSc Conservation Ecology, BSc Food Science, BScAgric Viticulture and Oenology, or BScAgric Oenology Specialised follow the **Faculty of AgriSciences'** welcoming programme.



## COMPUTERS ON CAMPUS

- Students may connect their own computers to the University's campus network, subject to certain conditions.
- You may bring along your own PC or purchase a new laptop through the University's STP (Student Technology Programme) at <http://stp.ac.za>.
- For all computer and IT-related information, please visit our website at <http://www.sun.ac.za/ITHUB> or send an e-mail to [student@sun.ac.za](mailto:student@sun.ac.za).
- To avoid long queues, there is a remote registration process that may be followed for all private PCs.

**For more information, follow this link:**

<https://stbsp01.stb.sun.ac.za/innov/it/it-help/Wiki%20Pages/Student%20Private%20Computer.aspx>

## COMPUTER USER AREAS (CUAs)

Students also register at the computer user areas.

**To be able to register:**

- you must take note of the University's Electronic Communications Policy at <http://www.sun.ac.za/ecp/>;
- you must already be registered as a student;
- your student card must be activated and magnetised, and **you must have your card with you**;
- you will need your student number;
- you will need the letter or sms containing your password that you received in the mail; and
- **you MUST know your student number and your ID number.**



## CONSTRUCTION ON CAMPUS



Stellenbosch University is constantly busy improving facilities on campus for the benefit of staff and students. For this reason, please take note that during the academic year building will possibly be taking place in and around the accommodation facilities on campus.

The first phase of an ambitious housing project that is partially funded by the DHET has reached completion during 2014. It provides housing on campus to about 770 students who previously had to find housing elsewhere. Locations for subsequent phases of the housing project are currently being explored. Furthermore, continuous maintenance and upgrade projects are also continuing as usual.

Because continuous building is happening on several terrains on campus and initially everyone is affected negatively in some way, no “discount” regarding residence tariffs will be considered. The question of ‘who will be given discount and who not?’ will result in a situation too tricky to handle. Students and their parents can be assured, however, that the well-being, safety and academic progress of students are always priority and that the University will do everything possible to limit inconvenience as much as possible.

During times of building all possible arrangements will be made for the safety of students and their belongings. For bigger projects, regular meetings will be held to which representatives of the residences will be invited in order to keep them updated on all matters and ensure that students are inconvenienced as little as possible.

No noisy work will be done during the first exam opportunity. In the week leading up to the start of the first exam opportunity, restrictions will be placed on working hours to ensure the residents are given sufficient opportunity to prepare for the upcoming examinations.

All statutory requirements regarding occupational safety will be adhered to and the contract team and workers of

each project will be clearly identifiable. The safety of our students is of cardinal importance.

### Enquiries

Dr Munita Dunn [mdunn@sun.ac.za](mailto:mdunn@sun.ac.za)

Mr Schalk Opperman [swo@sun.ac.za](mailto:swo@sun.ac.za)

## EXTENDED DEGREE PROGRAMMES

**Please note:** For more information **ONLY** about the Extended Degree Programmes, please contact the following persons:

- **Arts and Social Sciences**  
Ms Anita Jonker  
[axjonker@sun.ac.za](mailto:axjonker@sun.ac.za) Tel: 021 808 2081
- **Science**  
Ms Wilma Wagener  
[ww@sun.ac.za](mailto:ww@sun.ac.za) Tel: 021 808 3063
- **Economic and Management Sciences**  
Ms Ilze Gelderblom  
[ilzeg@sun.ac.za](mailto:ilzeg@sun.ac.za) Tel: 021 808 9525
- **Engineering**  
Mr Minnaar Pienaar  
[mop@sun.ac.za](mailto:mop@sun.ac.za) Tel: 021 808 4205
- **AgriSciences**  
Dr Natasja Brown  
[nbro@sun.ac.za](mailto:nbro@sun.ac.za) Tel: 021 808 2015

**Please note:** Students who are following an Extended Degree Programme register in faculty context on either **Monday 26 or Tuesday 27 January**. (Please consult the notice on registration that will be sent to you separately by the University Registrar.)

## FIRST-YEAR ACADEMY

The First-year Academy (FYA) is a comprehensive University initiative that focuses on promoting the success of first-



year students and improving the quality of student learning. To achieve this objective, the FYA facilitates various programmes and activities relating to first-year success and creates opportunities for faculties and support services to work together in an integrated structure. In this way, the FYA provides a unique and focused environment for first-year students to achieve success.

## INSURANCE: STUDENTS AND THEIR PROPERTY

“A safe campus for all” – these words give expression to a core aspiration of Stellenbosch University (SU). Not only does SU conduct a continuous campaign to make staff, students and visitors aware of potential risks that may threaten their safety and/or health, but where necessary, the Division Risk Management and Campus Security is made use of, as well as the South African Police Service, to continually enforce and monitor security measures. Students participate in academic trips, laboratory experiments, sport and other voluntary activities where they can be exposed to risks. The University takes all reasonable measures to protect students and their property when they participate in these activities and during their daily campus life. It is however impossible to eliminate all risks. Since it is not possible for the University to protect students and their property against all risks, students therefore participate in all University related activities on their own risk. The University does not take out personal insurance against accidents, medical insurance or any other insurance on behalf of students. The University would like to draw attention to the fact that each student is responsible for his/her own insurance and therefore recommends that he/she takes out sufficient comprehensive insurance for his/her personal possessions, as well as insurance against accidents and/or medical insurance.

## LANGUAGE PLACEMENT TESTS FOR ALL FIRST-YEAR STUDENTS (COMPULSORY)



*“During the past few years the language placement tests (for Afrikaans and English) were written as part of a battery of tests written by all prospective students. From 2013 these tests are administered separately as part of the welcoming programme for new students. As in the past, all new students should write these tests. This strategy forms an integral part of the University’s language planning and is essential*

- (a) *to annually form a general idea of the language skills of our students, and to gather information that would inform strategic language planning, and*
- (b) *to support the placement of students in different language modules and other language support mechanisms in the relevant faculties. It is particularly important to keep in mind that school results in language subjects do not provide reliable information to measure the linguistic preparedness of students.”*

– Prof Arnold Schoonwinkel: Vice-Rector  
(Learning and Teaching)

## SATURDAY 24 JANUARY 09:00 – 12:00

- **Faculty of Engineering students write in the Engineering building in Banghoek Road**
- **Faculty of AgriSciences students write in the Education building (GG Cillie) in Ryneveld Street**
- **Faculty of Science students write in the RW Wilcocks building in Ryneveld Street**
- **Faculty of Theology students write in the Accounting and Statistics building on the corner of Bosman and Victoria Street**



- **Faculty of Education students write in the Education building (GG Cillié) in Ryneveld Street**
- **Faculty of Law students write in the Accounting and Statistics building on the corner of Bosman and Victoria Street**
- **Faculty of Arts and Social Sciences students write in the Engineering building in Banghoek Road**
- **Faculty of Economic and Management Sciences students write in the Accounting and Statistics building and the Van der Sterr building, both on the corner of Bosman and Victoria Street (report to either of the two buildings)**
- **Occupational therapy students and Speech-Language and Hearing therapy students write in the Engineering building in Banghoek Road**
- **Jewish and Seventh day Adventist students. Please contact the test coordinator to arrange to write the test on an alternative day.**

**Please take a pencil and eraser with you when you write the tests.**

### **Important information: Extra writing time**

Students with disabilities and students who have officially been granted additional writing time must please contact the test coordinator **no later than Wednesday 21 January 17:00**. Please send the following to the coordinator via email: the student's name and student number, the letter from the Department of Education or the IEB that the student used in their matric exams for extra time (also indicating how much extra time), and the report or letter from the medical practitioner that explains the reason for the extra time. These students will then write in a different venue than indicated above.

Arrangements regarding extra writing time that are made with the test coordinator are valid for the Language Placement Tests only. Applications for extra writing time during tests and exams require a separate application process. For extra writing time during tests and exams, go to [www.mymaties.com](http://www.mymaties.com) after registration in 2015, select Studies and then Exam and Test Information to download the application forms for extra writing time. Send the completed and signed application to [skryftyd@sun.ac.za](mailto:skryftyd@sun.ac.za). If you have any questions, send an email to [skryftyd@sun.ac.za](mailto:skryftyd@sun.ac.za) for further information.

**Test coordinator:** Zaan Bester,  
e-mail [zbester@sun.ac.za](mailto:zbester@sun.ac.za) tel 021 808 2695



### **LIBRARY AND INFORMATION SERVICE**

The SU Library and Information Service offers an orientation programme in the central library (JS Gericke) and branch libraries. The programme in the JS Gericke Library (no 4 on the map) takes place on **26, 27 and 28 January**. Library orientation is arranged in accordance with the faculty and is aimed at introducing new students to the services and facilities there-of. Faculty programmes indicate the dates and times of library visits. Participants in the orientation programme also stand a chance to win exciting prizes.

More information is available in the comprehensive programme which students receive in January.

Apart from the JS Gericke Library, orientation programmes are also presented at the following branch libraries: Theology; Music; Engineering and Forestry; Medical & Health Sciences as well as the Bellville Park campus library. The orientation programme will be followed up with individual training called [GetSmart@URLibrary](mailto:GetSmart@URLibrary) in the subsequent week.



## MATIES SPORT



### Wednesday 28 January

**16:00 – 18:00** Maties Sport Presentation  
Coetzenburg Centre

**Enquiries** matiesport@sun.ac.za / 021 808 4642 /  
www.sun.ac.za/sport

## MENTORS

Mentors are senior students who are appointed in residences and PSO's to assist new students with their adjustment to university life. Each new student should have access to a mentor. The mentor already plays an important role during the welcoming period with general assistance regarding university life queries and psychosocial support. Through the mentor, the new students have the opportunity to partake in the Wellness programme of the University, which aims to enhance the wellness of students throughout the year. When you arrive at your residence or PSO, a mentor should be allocated to you. Should you not be allocated a mentor, or have any queries, please contact Client Services at tel 021 808 9111 or info@sun.ac.za.

## NATIONAL BENCHMARK TESTS (NBTs)

It is **compulsory** for all prospective first-year students at SU, regardless of the matriculation year or examination system followed, to write the National Benchmark Tests. For all NBT-related detail and reservations, please visit the official NBT website at [www.nbt.ac.za](http://www.nbt.ac.za). If you have not yet written the NBTs by the **last official test session on 10 January** you can contact the Centre for Student Recruitment at [maties@sun.ac.za](mailto:maties@sun.ac.za) or tel 021 808 2923 to make an appointment to take the NBTs on **Wednesday 21 January** in Stellenbosch.

## PARKING, APPLICATION FOR PARKING AND TRANSPORT



### Transport Bicycles

- Rent a Matie bike or bring your own bicycle to campus.
- Register your bicycle free of charge with Campus Security (in order to get access to safe bicycle sheds and to help find the owners of stolen bicycles).

### Campus Shuttle Service

- See the SU website for the specific routes and times of the service.

### Parking

- The various types of parking on university grounds and the associated costs are available on the SU webpage at <http://www0.sun.ac.za/sustainability/pages/english/home.php>.
- Students will be able to apply for parking and register their vehicles during student registration. Please note that a successful application does not guarantee a specific parking bay.
- The annual parking levy will be debited against the student's account.
- Students must note that application for access to parking can be done electronically throughout the year. Allocations in terms of reserved parking at residences and other SU housing, however, take place once-off at the beginning of the year based on applications received as well as the specific allocation criteria of the residences and SU housing.
- Only registered vehicles may be parked on university grounds.

**Enquiries** SU Client Services, tel 021 808 9111



## POSTGRADUATE AND INTERNATIONAL STUDENTS

The welcoming and orientation programme for international students takes place from **20 to 22 January** in Room 1001, RW Wilcocks building, c/o Victoria & Ryneveld Streets (no 71 on the map). The Welcome Centre will be open from **14 until 23 January**. All incoming international students should please report to the Welcome Centre at the RW Wilcocks building (in front of Room 1012).

For more information, contact Werner de Wit, tel +27 (0)21 808 9002 or email [wdw@sun.ac.za](mailto:wdw@sun.ac.za). Or visit the website at [www.sun.ac.za/international](http://www.sun.ac.za/international) for a detailed programme.

All international undergraduate first-years that have been enrolled for a full degree programme at the University follow the same welcoming programme as their South African peers.

## PSO STUDENTS OLDER THAN 25

Entering campus as an older PSO-student and to become part of a younger, undergraduate student population can be challenging. It is sometimes problematic to really become a part of the necessary support networks, to partake in the welcoming programmes aimed at a younger student profile and to find mentors. An informal function is taking place from **13:00 – 14:00 on Friday 23 January** in the quad of the Visual Arts building (no 63 on the map), where you will be able to meet other older students, can engage with PSO role players and where the basic services will be introduced to you. An email invitation will be sent to all PSO-students older than 25. Any other queries can be directed to Dr Munita Dunn at [mdunn@sun.ac.za](mailto:mdunn@sun.ac.za).

## PSO TRANSPORT SERVICE AND ACCOMMODATION DURING WELCOMING

Students who are not living in residences and are allocated to Private Student Organisations (PSO's) are encouraged to take part in the welcoming programme of their specific PSO. As the programmes end in the evening, a free transport service is available to all PSO students to ensure they get home safely. The transport service leaves at 21:00 and 22:00 from Campus Security in Merriman Avenue and will get students safely to their homes in Stellenbosch and specifically indicated drop-off points in surrounding areas. The drop-off points where students will be taken to, are the following: the SAPS-offices at Bellville, Athlone, Mitchells Plain, Paarl, Kuilsriver and Somerset West, as well as Brent Oil in Idas Valley, the Engen garage in Cloeteville and the security gate at Welgevonden (Stellenbosch). Students must please indicate beforehand, **by 9 January**, whether they would be using this service, as well as indicate the specific drop-off point. Please let your House Committee or Albert Coetzee at [albertcoetzee@sun.ac.za](mailto:albertcoetzee@sun.ac.za) know.

There will also be sleepover facilities in the PSO Clubhouse for students who are not able to go home for an evening. The House Committee of the specific PSO will be able to provide you as a student with more information about this service. Any other queries can be directed to Albert Coetzee on [albertcoetzee@sun.ac.za](mailto:albertcoetzee@sun.ac.za).

## SOCIETIES

The University's student societies have something to offer for everyone – from dancing to debating, from churches to community interaction. So, have a look in the back of the Matie Diary or go to [www.sun.ac.za/societies](http://www.sun.ac.za/societies) to find out more.





Remember to visit the Societies Fair on **Saturday 24 January**. Read more about the fair in the complete programme which all new students receive upon their arrival on campus.

## SPECIAL LEARNING NEEDS (DISABILITIES)

### Information session for students with Special Learning Needs (Disabilities) and their parents

Students who have diagnosed disabilities, for example a diagnosed reading disorder or visual disability, or who may need extra writing time based on other diagnosed conditions, are invited to attend this information session to determine what support is available at the University during their studies.

This **excludes** the National Benchmarking Tests (contact [www.nbt.ac.za](http://www.nbt.ac.za) or 021 650 3523) and the University's compulsory Language Placement Tests (contact Ms Zaan Bester at [zbester@sun.ac.za](mailto:zbester@sun.ac.za) or tel 021 808 2695).

### Stellenbosch students and their parents

**Date** Thursday 22 January, 12:30 – 15:00  
(walk-in session)

**Venue** Room 357 (3rd floor), Arts and Social Sciences Building, corner of Merriman Avenue and Ryneveld Street

### Extra writing time (Stellenbosch campus)

**Note** The cut-off dates for applications for **extra writing time** for tests and examinations are:

1 May (for June examination)  
1 October (for November examination)

**Enquiries** Examination Office, Admin A  
(no 1 on the map), tel 021 808 9111 or email [skryftyd@sun.ac.za](mailto:skryftyd@sun.ac.za). Application forms are available at [www.mymaties.com](http://www.mymaties.com) (exam and test information).

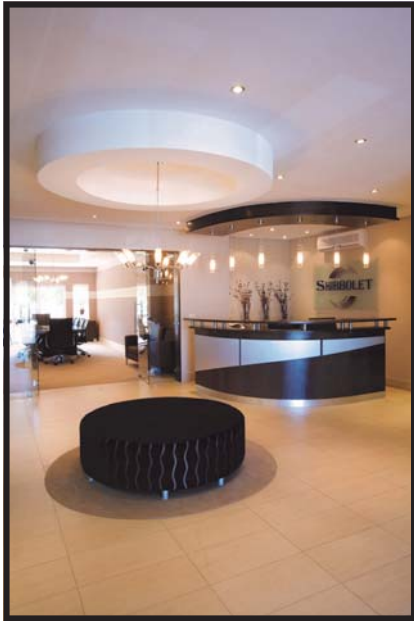
## WELLNESS OF ALL STUDENTS

The University follows a student-centred approach, with a special focus on the wellness of all students. One of the many structures that have been put in place to assist with this (in close collaboration with the entire University) is the Centre for Student Counselling and Development (CSCD). The Centre is located at 37 Victoria Street, Stellenbosch (no 8 on the map), and on the Tygerberg campus on the 3rd floor of the Tygerberg Student Centre (no 10 on the map). Students and parents are encouraged to visit the website and take note of all the services provided: <http://www.sun.ac.za/counselling>.

Some of the help and support includes the following:

- Study methods
- Time management
- Stress management
- Trauma management
- Personal psychotherapy
- Career development
- Academic underachievement
- Developmental workshops
- Specific support to students with Special Learning Needs (Disabilities)





## Student accommodation in Stellenbosch

**Bachelor, 1, 2 and 3 bedroom apartments to rent or to buy**

On-site Offices & Management Team | Gym | Secure Basement Parking |  
24 Hour Security | Satellite TV | Courtyard & Braai area | Laundry & Cleaning  
Facilities | Wireless Internet Available

t: 021 888 7400 | c: 083 381 6961  
admin@spdsa.co.za  
www.larez.co.za





Maties should take the same safety precautions in Stellenbosch than elsewhere in South Africa. Thousands of mobile phones, computers and vehicles attract criminals.

## Tips

- Never walk alone, especially not at night
- Keep your phone and valuables out of sight
- Carry a whistle or pepper spray at all times
- Power outages are unpredictable: carry a torch
- Choose the safest route, even if it is not the shortest
- Avoid isolated areas when you exercise
- Be alert! Look around you and peel your eyes and ears
- Keep a safe distance if motorist asks for directions
- If something looks suspect, change direction
- Be a caring Matie: accompany a friend
- Property on a car seat is tempting to a thief. Lock it in the boot.

**Safety Escort at night:** If you need to move between campus buildings, or from a building to your car after dark (20:00 – 05:00), a security officer will escort you. Call 021 808 4666 and wait for the officer to join you.

**Safest routes:** Bosman and Victoria streets are the safest routes. At night a security officer is on duty in the mobile security kiosk on the Dagbreek corner.

## EMERGENCY NUMBERS

(save these numbers on your mobile phone)

Stellenbosch campus 24-hour emergency number: 021 808 2333

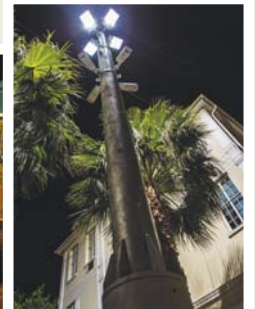
Enquiries/reporting/safety escort: 021 808 4666

Tygerberg campus 24-hour emergency number: 021 938 9507

[www.sun.ac.za/safety](http://www.sun.ac.za/safety)

# TAKE YOUR SAFETY SERIOUSLY

**Shuttle service:** On week days the shuttle service runs on the hour from the periphery to central campus. At night the shuttle service runs on the hour from 18:00 to 02:00 from the parking area between the Neelsie Student Centre and the Merensky building. The buses run up to a 6 kilometre radius from the central campus. This service is available from Monday to Sunday during class and exam periods. You need your student card to make use of this service and from 2015 a trip rate may be applicable. Check the safety website for updates.







*A New Beginning for a Bright Future*

**BRAND NEW 2 BEDROOM,  
2 BATHROOM APARTMENTS FROM**

***R4,500***  
per month

## *Seize the Moment*

- 3 Bedroom homes from R1,190,000  
VAT and transfer cost included
- 2 bedroom , 2 bathroom apartments
- Open plan lounge/dining area
- Fitted kitchen
- Built in cupboards
- 24hr on site security
- Walking trail within the estate
- Only 4km to the University of Stellenbosch
- Easy access to N1 National Road &  
R44 Somerset West
- Panoramic mountain views
- Superior finishes

[www.nuutgevonden.co.za](http://www.nuutgevonden.co.za)

**NOW LETTING | OCCUPATION 1 DECEMBER 2014**



**ON SHOW DAILY**



**Asrin Office:** 021 713 3012

**Yasiera:**

Email: [ymapari@asrin.co.za](mailto:ymapari@asrin.co.za)

**Barbara:**

Cell: 082 440 6080

Email: [sales@asrin.co.za](mailto:sales@asrin.co.za)

**Rehana:**

Cell: 084 055 4431

Email: [marketing@asrin.co.za](mailto:marketing@asrin.co.za)



**INVESTORS!**

**LUXURIOUS 24 HOUR  
SECURITY COMPLEX  
ON STELLENBOSCH CAMPUS**



### **DEO GLORIA**

SUSTAINABLE AND SAFE WITH EXCELLENT SECURITY MEASURES

- ✓ 24 hour security complex with safe basement and undercover parking
- ✓ Central air conditioning
- ✓ Fully equipped kitchen
- ✓ Internet, DSTV and access to a Telkom line
- ✓ Within easy walking distance from campus

ONE, TWO AND THREE BEDROOM APARTMENTS AVAILABLE

**STARTING  
PRICE R1,2m**

Price includes parking and transfer duty

**CONTACT TODAY** | Office : 021 202 2410 | [www.annabasson.co.za](http://www.annabasson.co.za) | Web Ref : 8046



# SUSTAINABILITY

## GREEN IS THE NEW MAROON!



The Matie campus is GREEN – and as a new Matie you are now part of the GREEN team!

One of Stellenbosch University's (SU) major focuses is a sustainable university and campus, and staff and students all work together to promote this aim.

So, new Matie, we need your assistance to help conserve your beautiful campus. You can make a difference and become part of the green generation! See below for what you can and must do to contribute to an environmentally friendly and greener campus ...

### Transport (mobility)

To get from point A to point B in a green way, you have the following options:

**Walking:** Walk to where you want to be. Safe pedestrian routes bring you from town or the campus periphery to central campus.

**Cycling:** Rent a Matie bike or bring your own and cycle to where you want to be.

**Campus shuttle bus:** Travel with the campus shuttle bus along specific routes from the campus periphery to central campus.

**Lift clubs:** Rather club together than using your own transport. Join *Findalift*, a private and free on-line service providing Maties with safe lifts. Register on *Findalift*'s closed website and find a lift with someone travelling the same route as you.

**Parking on campus:** Do not assume you will be able to park your wheels on campus. Rather use another transport option than driving with your own car.

### Recycling

Do not just throw away papers, tins or bottles. Think of recycling and make your contribution by recycling waste material. This way you will be helping to promote a greener campus.

#### At residences

Systems are in place at residences to sort waste material for recycling. Put your recyclable, non-recyclable and food/ compost waste in the specially marked containers. Make sure that your tins and bottles are empty before you put them in the container for dry waste.

#### On campus

Clearly marked bins for recyclable, non-recyclable and food/

compost waste respectively have been placed at many locations on the Stellenbosch, Tygerberg and Bellville Park campuses. Placing your waste products in the correct bins as indicated, makes the sorting process for recycling easier.

### Water

Water is a scarce resource and must be conserved. Here is what you can do to save water ...

- Drink tap water. Three to five litres of tap water are used to produce one litre of bottled water. Bottled water therefore wastes water, generates plastic waste products and has a higher carbon footprint.
- Cut down on your shower time or bath in less water.
- Be on the lookout for the water stations on campus with their special branding. Bring your own water bottle and fill it up at the water station. And use the same bottle the next day to fill up.
- Water-saving shower nozzles have been installed at residences.
- Report leaking taps and irrigation to the Facilities Management helpline on 021 808 4666.

### Energy

From the time that you open your eyes in the morning until you switch off your lights at night, you can make a difference to save energy. Here is what you can do ...

- Switch off lights when you leave the room.
- Switch off your computer, printer, scanner and other similar devices if not in use.
- Switch off your cell phone or computer's cordless capacity and Bluetooth if not in use to save your battery's lifetime. Cordless devices use more energy when searching for connections all the time.
- Remove your power connection plug (e.g. cell phone charger) from the wall socket if not in use. It consumes energy when plugged in.
- Rather climb the stairs than using lifts.
- If possible, use natural daylight and do not switch on the lights unnecessarily.
- If you want to keep the room cool, close the curtains or blinds.
- Read documents on your computer screen and do not print them unnecessarily.
- Switch off your computer monitor if not in use.







## we offer the following services :

- we open accounts for students
- expert knowledge and advice
- claim from most medical aid funds
- day spa for beauty treatments
- health shop
- free delivery
- primary health care clinic
- open 7 days a week
- wide variety sports supplements

### we also have 3 other pharmacy branches in stellenbosch :

die boord pharmacy - tel : (021) 887 9400 (for after hours service)

stellenbosch square pharmacy - (021) 880 2189

medi-health pharmacy - (021) 883 2360



prescriptions can be made up at any of these branches  
(linked pharmacy profiles)

tel : (021) 809 5440 / fax : (021) 883 3837

e-mail : [mlombard@telkomsa.net](mailto:mlombard@telkomsa.net) / [info@dieboordapteek.co.za](mailto:info@dieboordapteek.co.za)

address : shop E109, eikestad mall, andringa street, stellenbosch





## CHS offers INTEGRATED SERVICE

The Stellenbosch University Campus Health Service (CHS) offers an integrated and accessible health service for students and staff and has an equipped pharmacy for this service. CHS supports the wellness initiative for students and personnel and are provided at the Stellenbosch and Tygerberg campuses.

### QUICK QUESTIONS ABOUT CHS

#### *Is this service free?*

Services delivered by our professional medical officers and physiotherapists are charged at the minimum ethical tariff. All services delivered by our professional nurse practitioners are free of charge, excluding any medication that is given.

#### *How are services paid for?*

We are a registered provider of all medical aids in South Africa and Namibia and all accounts are sent electronically. We accept cash/cheque payments as well.

#### *Does CHS cover all medical services (e.g. X-rays and Dentistry)?*

We have professional medical officers, physiotherapists and nurse practitioners. All other services are referred to.

#### *Must I be immunised?*

Being up to date with all vaccinations is an important consideration for all students (especially first years living in residences). The following vaccinations are all optional, but highly recommended:

- Influenza (flu) – annual vaccination
- Meningitis – one injection every 3 years
- Measles, Mumps and Rubella (German Measles) – if non-immune, series of 2 vaccines, 1 year apart
- Hepatitis A and B – compulsory in Health Sciences; combination (Twinrix) available, series of 3 vaccines over 6 months
- Human Papilloma Virus – series of 3 vaccines over 6 months

All vaccines are available at CHS and prices are available upon request. Please check with your Medical Aid if they pay for vaccinations.

#### *Does CHS offer counselling?*

We offer counselling to patients who come for specific screening/test e.g. HIV testing and family planning. Other counselling is given by the Centre for Student Counselling and Development (CSCD). Their contact number is 021 808 4707.

#### *Is patient transport available?*

We offer transport to patients in the confines of the campus. The patient can contact us for this service.

#### *How do I make an appointment?*

Appointments can be made by contacting us on the numbers below or contacting us via social media (Facebook, Twitter) or our website.

#### *What if I have an emergency?*

We can be contacted on the numbers below during office hours. For after-hours emergencies the following numbers can be contacted:

- Stellenbosch Medi-Clinic, tel 021 886 9999 or 021 861 2000
- SU 24-Hour Crisis line, tel 082 557 0880
- Contraception helpline, tel 0800 246 432
- HIV Helpline, tel 0860 HIV 911

#### *For more information go to:*

- Website: [www.sun.ac.za/kampusgesondheid](http://www.sun.ac.za/kampusgesondheid)
- Facebook: [www.facebook.com/Stellenbosch.University.CHS](http://www.facebook.com/Stellenbosch.University.CHS)
- Twitter: @CampusHealth\_SU

#### *All our practices are open from Monday to Friday between 08:00 – 17:00*

- Physiotherapists (next to the gymnasium in the Sport Science building (no 84 on the map)) – tel 021 808 3392
- Stellenbosch clinic (7 Claassen Street (no 16 on the map)) – tel 021 808 3496/3494
- Tygerberg clinic (3rd Floor, Tygerberg Student Centre (no 10 on the map)) – tel 021 938 9590



## for Stellenbosch Campus

### IMPORTANT numbers

All Enquiries / Client Services	021 808 9111
Academic Affairs Council (AAC)	021 808 2491/2493
Admissions	021 808 9111
Bursaries and Loans	021 808 9111
Campus Health Services	021 808 3494/3496
Cape Institute for Agricultural Training: Elsenburg	021 808 5453
Careers Office	021 808 3568
Centre for Student Counselling and Development (CSCD)	021 808 4707
Centre for Student Recruitment (CSR)	021 808 4709
Communication and Liaison	021 808 4977
Facilities Management	021 808 4666
Language Centre	021 808 2167
Library Enquiries	021 808 2486
MAD <sup>2</sup> Office	021 808 3632
Maties Sport	021 808 4941/4642
Ombudsman	082 807 2994
Prim Committee	021 808 2491/2493
Risk Management and Campus Security	021 808 4666
Social worker	021 808 4994
Societies Council	021 808 2491/2493
Student Fees	021 808 9111
Stellenbosch Student Representative Council (SRC)	021 808 2491/2493
SU Gymnasium	021 808 4428
Tygerberg campus (switch board)	021 938 9111
Tygerberg Student Council (TSC)	021 938 9591



# EMERGENCY numbers

for Stellenbosch

CSCD 24-Hour Crisis Service	082 557 0880
Student Structures and Communities	021 808 2848
Risk Management and Campus Security:	
• Ops Room for general enquiries and the reporting of risks	021 808 4666
• 24-hour Emergency Line for the reporting of serious incidents and danger	021 808 2333
The Ombudsman	082 807 2994
Police Flying Squad	10111
Ambulance	084 124 (ER24)
	082 911 (Netcare)
Medi-Clinic 24-hour emergency unit	021 886 9999

Have you saved them on your cell phone?









# SUPPORT SERVICES

- 1 Administration, Block A
- 2 Administration, Block B
- 3 Administration, Block C
- 4 JS Gerick Library
- 5 Neelsie Student Centre
- 6 Campus Security
- 7 Centre for Student Recruitment
- 8 Centre for Student Counselling and Development: Reception (CSCD)
- 9 CSCD: Office for Students with Special Learning Needs (Disabilities); Den Bosch
- 10 CSCD: Unit for Psychotherapeutic and Support Services
- 11 Centre for Teaching and Learning
- 12-14 Division for Student Affairs
- 15 Language Centre: Reading Lab and Language Enrichment Courses
- 16 Campus Health Services
- 17 Maties Sport
- 18 Coetzburg Centre
- 19 Old Conservatoire
- 20 SU Art Gallery
- 21 Eben Dönges Centre (Sasol Art Museum)
- 22 Centre for Learning Technology
- 23 Language Centre (Writing Lab)
- 24 WAT, 115 Banghoek Road
- 25 Matie Community Services, Lückhoff School
- 26 SU Vehicle Fleet
- 27 Legal Aid Clinic
- 28 IT Hub (Help Centre)
- 29 TAS-IT
- 30 Purchasing and Provision Services
- 31 Facilities Management
- 32 Information Technology

# SPORTS FACILITIES

- 33 Danie Craven Stadium
- 34 Coetzburg Athletics Stadium
- 35 Coetzburg Tennis Courts
- 36 PSO Club House and Hockey Fields
- 37 Netball Courts
- 38 Swimming Pool
- 39 SU Gymnasium
- 40 Tennis Courts (Residences)
- 41 Old Mutual Sports Centre (squash courts)
- 42 Tennis Courts
- 43 Heidehof Rugby Fields

# ACADEMIC BUILDINGS

- 44 Food Science
- 45 PO Sauer
- 46 Electrical/Electronic Engineering
- 47 Civil Engineering
- 48 Mechanical/Mechatronic/Industrial Engineering
- 49 Process Engineering
- 50 Knowledge Centre
- 51 Engineering, General
- 52 Africa Centre for HIV and AIDS Management
- 53 JC Smuts – Biological Sciences
- 54 De Beers – Chemistry
- 55 Mike de Vries
- 56 Chemistry – first-years
- 57 Inorganic Chemistry
- 58 CGW Schumann
- 59 Van der Sterr
- 60 Accounting and Statistics
- 61 JS Marais
- 62 Polymer Science
- 63 Visual Arts
- 64 JH Neethling
- 65 AI Perold
- 66 Merensky
- 67 Mathematical Sciences and Industrial Psychology

- 68 Nursery
- 69 Natural Sciences
- 70 Chamber of Mines
- 71 RW Wilcocks
- 72 Old Main Building
- 73 HB Thom Theatre
- 74 CL Marais Library
- 75 Journalism
- 76 GG Cillie
- 77 Arts and Social Sciences
- 78 Lombardi
- 79 Konservatorium (University Choir)
- 80 Theological Seminary
- 81 Paul van der Bijl Laboratories
- 82 Agronomy
- 83 Welgevallen Experimental Farm
- 84 Sport Science

# WOMEN'S RESIDENCES

- 85 Monica
- 86 Harmonie
- 87 Heemstede
- 88 Huis ten Bosch
- 89 Lydia
- 90 Minerva
- 91 Nerina
- 92 Erica
- 93 Nemesia
- 94 Serruria
- 95 Tinie Louw Dining Hall; ▲ amaMaties hub
- 96 Sonop (Huis van Niekerk)
- 97 Irene

# MEN'S RESIDENCES

- 98 Eendrag
- 99 Helshoogte
- 100 Simonsberg
- 101 Huis Visser
- 102 Huis Marais
- 103 Dagbreek
- 104 Majuba
- 105 Wilgenhof
- 106 Helderberg

# MEN'S AND WOMEN'S RESIDENCES

- 107 Huis Neethling
- 108 Metanoia
- 109 New generation residence; ▲ Wimbledon hub
- 110 Academia
- 111 Concordia
- 112 Goldfields
- 113 Huis McDonald

# UNIVERSITY FLATS AND HOUSES

- 114 Lobelia
- 115 Crozierhof
- 116 Huis de Villiers
- 117 Waldenhof

# LISTEN, LIVE AND LEARN

- 118 LLL village
- LLL houses

# CLUSTER HUBS

- ▲ amaMaties 95
- ▲ Wimbledon 108

# FACULTIES (IN COLOUR) AND DEPARTMENTS

- Accounting 59
- African Languages 77
- Afrikaans en Nederlands 77
- Agricultural Economics 61

# AGRISCIENCES 44, 45, 53, 55, 61, 64, 78, 81–83

- Agronomy 82
- Ancient Studies 77
- Animal Sciences 55
- Applied Mathematics 51

# ARTS AND SOCIAL SCIENCES 63, 70, 71, 73, 75, 77, 79

- Biochemistry 53
- Business Management 58
- Botany and Zoology 69
- Chemistry and Polymer Science 54–57, 62
- Computer Science (Math. Sc.) 51
- Conservation Ecology and Entomology 61
- Drama 73
- Earth Sciences 70

# ECONOMIC AND MANAGEMENT SCIENCES 52, 58–60, 67

# EDUCATION 76, 84

# ENGINEERING 47–51

- English 77
- Food Science 44
- Forest and Wood Sciences 45
- General Linguistics 77
- Genetics 53
- Geography and Environmental Studies 70
- History 71
- Horticulture 78
- Industrial Psychology 67
- Information Science 77
- Institute for Wine Biotechnology 64
- Institute for Plantbiotechnology 69
- Journalism 75

# LAW 72

- Mathematics (Math. Sc.) 67
- Microbiology 53
- Modern Foreign Languages 77
- Music 79
- Philosophy 77
- Physics 66
- Physiological Sciences 55
- Plant Pathology 78
- Political Science 77
- Psychology 71
- Public Development Management 59

# SCIENCE 51, 53–57, 59, 62, 65, 66, 67, 70

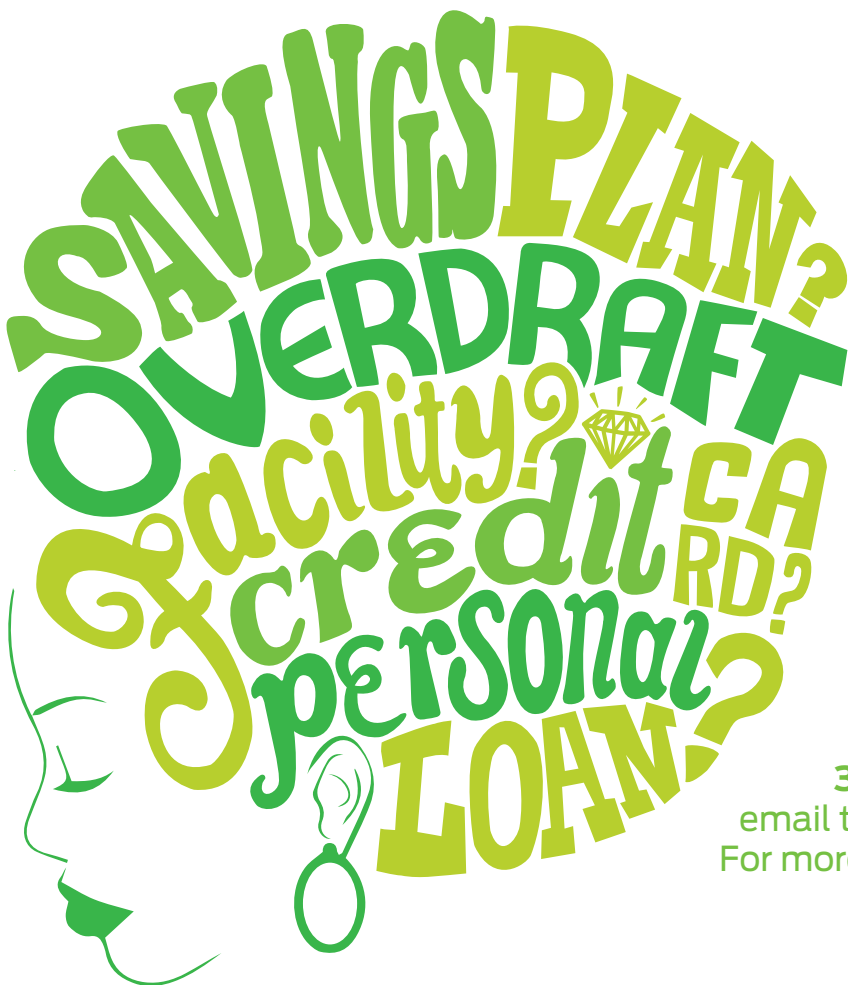
- Social Work 77
- Sociology and Social Anthropology 77
- Soil Science 78
- Sport Science 84
- Statistics and Actuarial Science 60

# THEOLOGY 80

- Visual Arts 63
- Viticulture and Oenology 64

# P Parking





We've got another solution for you... **consider Eduloan...**

As a specialist in educational finance, Eduloan is the answer to being able to afford the education you want. Our finance options cover everything from books to accommodation and tuition to tablets. To apply, you only need four documents. If you have a bursary, the Eduxtras card (fund administration solution) assists with proper fund management.

Eduloan also offers finance for laptops and other technology tools to assist with your studies.

Call **0860 55 55 44** or SMS "**UOS**" to **32150** and we'll call you back or send an email to **[westerncaperegion@eduloan.co.za](mailto:westerncaperegion@eduloan.co.za)**. For more information, visit **[www.eduloan.co.za](http://www.eduloan.co.za)**





IT'S AMAZING HOW A LITTLE  
TOMORROW CAN MAKE UP FOR  
A WHOLE LOT OF YESTERDAY...



BE A PART OF TOMORROW.



MatiesMADsquare



Facebook



Youtube

[www.sun.ac.za/madsquare](http://www.sun.ac.za/madsquare)









T Y G E R B E R G

22-31 January  
Tygerberg Campus

**WELCOMING PROGRAMME**  
for New Students and their Parents





## Parents meet the DEAN (including students)



Thursday, 22 January

Parents and new students in MB, ChB, BSc in  
Physiotherapy, and BSc in Dietetics

08:30 – 10:00

Dean, Prof Jimmy Volmink

Venue

Tygerberg Sports Hall  
(no 10 on the map), Tygerberg campus

See the programme of the Faculty of Medicine and Health  
Sciences on p 45

Parents and new students in B of Occupational  
Therapy and B of Speech-Language and  
Hearing Therapy

15:00 – 16:00

Executive Head: Interdisciplinary  
Health Sciences, Prof Usuf Chikte

Venue

Lecture Hall 201, Sports Science building  
(no 84 on the map), Stellenbosch  
(at Coetzenburg, behind Danie Craven  
stadium)





# OUTLINE AND PROGRAMME

## for TYGERBERG Campus' Welcoming Programme

( Important for both parents  
and students to read )

22 – 31 January

All new students and their parents (MB, ChB, BSc in Physiotherapy, and BSc in Dietetics) are cordially invited to participate in the following activities (for parents, only Thursday 22 January).

**TAKE NOTE:** Students in the programmes B of Speech-Language and Hearing Therapy and B of Occupational Therapy, together with their parents, follow the programme of the Faculty of Arts and Social Sciences on the Stellenbosch campus, unless indicated otherwise.

Please note that the welcoming ceremony at 18:00 (informal programme for students starts at 17:00) on Thursday 22 January takes place at Danie Craven Stadium in Stellenbosch, and not on Tygerberg campus. New Tygerberg campus students and their parents are requested to attend this programme after the day's programme at Tygerberg campus. For those who do not have their own transport, busses will be arranged from Tygerberg campus to Stellenbosch, and back.

### Enquiries

Ronel Retief, tel 021 938 9379  
Liesel Marais, tel 021 938 9533  
Mandi Barnard, tel 021 938 9505

### THURSDAY 22 JANUARY

**08:30 – 10:00**

Welcoming of parents and first-year students by the Dean: Faculty of Medicine and Health Sciences, the Tygerberg Student Council chairperson and other role players in the Faculty  
Tygerberg Sports Hall (no 10 on the map)

### Venue

**10:00 – 11:00**

Meeting of parents and new students with programme coordinators for MB, ChB, BSc in Physiotherapy, and BSc in Dietetics respectively

### Venue

MB, ChB: Lecture Hall 11 / Physiotherapy: Lecture Hall 4 / Dietetics: Lecture Hall 1, Education Building (no 2 on the map)



Visit the student societies' food stalls between 11:30 and 14:00 if you are not involved in any of the sessions below. Please also visit the cafeteria in the Tygerberg Student Centre or the coffee shop in the Clinical Building for refreshments or a light meal.

**11:00 – 12:00** Explore Tygerberg – a campus tour for first-year students

**11:00 – 12:00** Explore Tygerberg – a campus tour for first-year students of Hippokrates and Meerhoff, and their parents

**Venue** Assemble on the Hippokrates lawn (no 4 on the map)

**11:00 – 12:00** Osler\* students and their parents meet Osler committee members

**Venue** Lecture Hall 11, Education Building

**12:00 – 13:00** Explore Tygerberg – a campus tour for first-year students of Huis Francie van Zijl and Huis Kerkenberg, and their parents

**Venue** Assemble on the Hippokrates lawn

**13:00 – 14:00** Explore Tygerberg – a campus tour for first-year students of Osler, and their parents

**Venue** Assemble on the Hippokrates lawn

**14:00 – 15:00** Session on student support at Tygerberg campus for parents of first-year students

**Venue** Lecture Hall 11, Education Building

**14:00 – 15:00** Introduction of student societies to first-year students

**Venue** Tygerberg Sports Hall

**15:00** Busses depart for Danie Craven Stadium

**17:00 – 18:00** Dream Launch

**18:00 – 19:00** **OFFICIAL WELCOMING**

Welcoming of new students and their parents (**compulsory** for all students)

**Venue** Danie Craven stadium (no 33 on the Stellenbosch campus map)

If you are using your own transport, please take the traffic congestion in Stellenbosch into account when planning travelling time, as well as parking and walking distance to the stadium. Comfortable clothes and shoes are recommended (see p 9 for more information).

\*Osler refers to the private students' ward on Tygerberg campus, i.e. students who do not live in residences

## FRIDAY 23 JANUARY

**Please note** A Muslim prayer facility is available on Tygerberg campus

**09:00 – 11:00** Registration (only those first-year students who could not self-register via <http://www.mymaties.com>) and taking of photographs for student cards

**09:00 – 09:30** Huis Francie van Zijl

**09:30 – 10:00** Huis Kerkenberg and Meerhoff

**10:00 – 10:30** Hippokrates

**10:30 – 11:00** Osler

**Venue** GERGA, 3rd floor, Education Building

**12:00 – 16:00** GERGA orientation (**compulsory**)

**12:00 – 12:45** Huis Kerkenberg and Meerhoff

**13:00 – 13:45** Huis Francie van Zijl

**14:00 – 14:45** Osler

**15:00 – 15:45** Hippokrates

**Venue** GERGA, 3rd floor, Education Building

**Please note:** It is highly recommended that all students on Tygerberg campus provide their own electronic devices (e.g. laptops or tablets) for academic purposes, including



assessments. For more information on the Bring-Your-Own-Device (BYOD) system please visit <http://blogs.sun.ac.za/fhscua/byod-guide>.

**14:00 – 16:00** Registration of new first-year students for the B of Occupational Therapy and Speech-Language and Hearing Therapy programmes who cannot self-register

**Venue** Room 3008 (office of Ms Z Jansen), Administration A (no 1 on the Stellenbosch campus map), Stellenbosch

**Please note:** The following is only an outline of the rest of the programme. All new students will receive the comprehensive welcoming programme upon arrival on campus in January.

## SATURDAY 24 JANUARY

General and social integration as arranged by residences and PSO wards

## MONDAY 26 JANUARY

**08:00 – 16:00** Academic orientation

**Venue** Lecture Hall 11, Education Building

**16:30 – 18:00** Academic Administration

**Venue** Lecture Hall 4 and 11, Education Building

## TUESDAY 27 JANUARY

General and social integration as arranged by residences and PSO ward

## WEDNESDAY 28 JANUARY

**08:00 – 08:45** Information session for Recruitment Bursary students

**Venue** Lecture Hall 11, Education Building

**09:00 – 12:00** Compulsory Language Placement Tests

**Venue** Main Lecture Hall and Lecture Hall 7, Education Building

**09:00 – 16:00** Compulsory session for B of Occupational Therapy students

**Venue** Room 1018, Occupational Therapy, Education Building

**13:30 – 16:30** What first years should know – an interactive learning experience

**Venue** Tygerberg Sports Hall

## THURSDAY 29 JANUARY

**09:00 – 12:00** Community interaction and development (participation in various activities and projects in the community by students and staff)

## FRIDAY 30 JANUARY

**18:00 – 23:00** “Vensters” street theatre

## SATURDAY 31 JANUARY

Closure function of clusters and residences as arranged

## OFFICIAL WELCOMING PROGRAMME FOR NEW STUDENTS ENDS

## MONDAY 2 FEBRUARY

Official commencement of classes for new students





## TWO OPTIONS to register as student

There are two different options available for you to officially register as a student of Stellenbosch University in January 2015, namely self-registration (e-registration), or by using the registration process in GERGA at Tygerberg campus for students in the Faculty of Medicine and Health Sciences, that takes place during the welcoming programme according to a fixed schedule.

It is important that you consult the notice on registration that will be sent to you separately by the Registrar of the University, as all the information that you need to decide whether you want to register yourself, or whether you rather want to register in GERGA during the welcoming programme, will be given in the notice. All the necessary dates, times, documentation required and other important information will be contained in the notice. [The system for self-registration will be accessible from 14 to 29 January.](#) If you have done the National Senior Certificate or the IEB-certificate, you will be able to register yourself. Candidates from other school systems cannot self-register.

Self-registration can be done from any computer with access to internet on [www.mymaties.com](http://www.mymaties.com). We wish to urge you to use this option, as you will know before leaving for Tygerberg whether you meet the admission requirements of the study programme to which you were provisionally admitted and, if so, that you were finally accepted and registered as student. You will then just have to acquire your student card in the time slot determined for your registration in GERGA. [It is, however, important that you attend the full welcoming programme](#)

If you cannot or do not want to register yourself, you must ensure that you report for registration on [Friday 23 January](#). Please note that first year students who have not registered on these dates and who have not obtained special permission to register late, will be charged a levy of R500.

If you do not register yourself, it is your responsibility to ensure that you comply with all the admission requirements of your study programme before you leave for Tygerberg.

If you are going to register in GERGA, you must show the following original documents when you report for registration in the allotted time slot:

1. Advice of Results of the 2014 NSC or IEB final school-leaving examination.
2. NSC or IEB candidates who matriculated in 2013 or earlier: National Senior Certificate.
3. Candidates from other school systems: School-leaving certificate/s and certificate of university exemption issued by the SA Matriculation Board.
4. Candidates who studied at other universities: The documents mentioned in 2 or 3 as well as a full academic record and a certificate of good conduct issued by the university concerned.
5. If you are not a South African citizen: a valid study permit.

All new first-year students for the BSc in Dietetics, BSc in Physiotherapy and MB, ChB programmes who cannot self-register will thus register on [Friday 23 January](#) in the computer user area (GERGA), 3rd floor, Education Building (no 2 on the map), Tygerberg campus (see table below).

New first-year students for the B of Occupational Therapy and B of Speech-Language and Hearing Therapy programmes who cannot self-register will register at the Stellenbosch campus on [Friday 23 January between 14:00 and 16:00](#) in room 3008, Administration A (no 1 on the map), office of Ms Zenda Jansen.

[Date and time of registration which involves](#) (only BSc in dietetics I, BSc in Physiotherapy I and MB, ChB I students who cannot self-register):

### Registration – Friday 23 January

RESIDENCES	TIME
Huis Francie van Zyl	09:00 – 09:30
Huis Kerkenberg and Meerhoff	09:30 – 10:00
Hippokrates	10:00 – 10:30
Osler (Private Students' Ward)	10:30 – 11:00



# IMPORTANT

## general information

### (Tygerberg Campus)



#### COMPULSORY LANGUAGE PLACEMENT TESTS FOR ALL FIRST-YEAR STUDENTS

*“During the past few years the language placement tests (for Afrikaans and English) were written as part of a battery of tests written by all prospective students. From 2013 these tests are administered separately as part of the welcoming programme for new students. As in the past, all new students should write these tests. This strategy forms an integral part of the University’s language planning and is essential (a) to annually form a general idea of the language skills of our students, and to gather information that would inform strategic language planning, and (b) to support the placement of students in different language modules and other language support mechanisms in the relevant faculties. It is particularly important to keep in mind that school results in language subjects do not provide reliable information to measure the linguistic preparedness of students.”*

– Prof Arnold Schoonwinkel:  
Vice-Rector (Learning & Teaching)

#### Wednesday 28 January 09:00 – 12:00

Faculty of Medicine and Health Sciences students write in the Main lecture hall, Tygerberg Campus

**Important:** Please take a pencil and eraser with you when you write the tests.

**Extra writing time:** Students with disabilities and students who have officially been granted additional writing time must please contact the test coordinator **no later than Wednesday 21 January 17:00**. Please send the following to the coordinator via email: the student’s name and student number, the letter from the Department of Education or the IEB that the student used in their matric exams for extra time (also indicating how much extra time), and the report or letter from the medical practitioner that explains the reason for the extra time. These students will then write in a different venue than indicated above.

**Important concerning extra writing time:** Arrangements regarding extra writing time that are made with the test coordinator are valid for the Language Placement Tests only. Applications for extra writing time during tests and exams require a separate application process. For extra writing time during tests and exams,



go to [www.mymaties.com](http://www.mymaties.com) after registration in 2015, select Studies and then Exam and Test Information to download the application forms for extra writing time. Send the completed and signed application to [skryftyd@sun.ac.za](mailto:skryftyd@sun.ac.za). If you have any questions, send an email to [skryftyd@sun.ac.za](mailto:skryftyd@sun.ac.za) for further information.

**Test coordinator:** Zaan Bester,  
e-mail [zbester@sun.ac.za](mailto:zbester@sun.ac.za) tel 021 808 2695

## EXTENDED DEGREE PROGRAMMES (EDP)

**PLEASE NOTE:** For more information ONLY about the Extended Degree Programmes, please contact Dr Alwyn Louw, [ajnlouw@sun.ac.za](mailto:ajnlouw@sun.ac.za), tel 021 938 9389

### Registration:

Students who are following an Extended Degree Programme register in faculty context on **Friday 23 January**. (Please consult the notices on registration that will be sent to you separately by the University Registrar.)

## PARKING AND APPLICATION FOR PARKING

- The various types of parking on university grounds and the associated costs are available on the SU webpage at <http://www0.sun.ac.za/sustainability/pages/english/home.php>.
- Students will be able to apply for parking and register their vehicles during student registration. Please note that a successful application does not guarantee a specific parking bay.
- The annual parking levy will be debited against the student's account.
- Students must note that application for access to parking can be done electronically throughout the year. Allocations in terms of reserved parking at residences and other SU housing, however, take place once-off at the beginning of the year based on applications received as well as the specific allocation criteria of the residences and SU housing.
- Only registered vehicles may be parked on university grounds.

**Enquiries:** Ms E van der Merwe, tel 021 938 9351





# EMERGENCY AND NON EMERGENCY NUMBERS

## CSCD 24-hour Crisis Service

Student Structures and Communities (SSC)

Risk Management and Campus Security

The Ombudsman

Police Flying Squad

Ambulance

Poison Information Centre

Tygerberg Hospital

082 557 0880

021 808 2848

021 938 9507/9500

082 807 2994

10111

084 124 (ER24)

082 911 (Netcare)

021 931 6129

021 938 4911

**EMERGENCY**  
**numbers**  
Have you saved them  
on your cell phone?

All Enquiries / Client Services

Admissions

Bursaries and Loans

Campus Health Services

Careers Office

Centre for Student Recruitment (CSR)

Centre for Student Counselling and Development (CSCD)

Centre for Teaching and Learning (CTL)

Facilities Management

Language Centre

Library Enquiries

MAD<sup>2</sup> Office

Marketing Office

Maties Sport

Ombudsman

Risk Management and Campus Security

Social worker

Societies Council

Stellenbosch Student Representative Council (SRC)

Student Structures and Communities (SSC)

Student Fees

SU Gymnasium

Tygerberg Academic Affairs Council (TAAC)

Tygerberg campus (switch board)

Tygerberg Gymnasium

Tygerberg Hospital

Tygerberg Prim Committee

Tygerberg Student Council

021 808 9111

021 808 9111

021 938 9458

021 938 9590

021 808 3568

021 808 4709

021 938 9590

021 808 3717

021 808 4666

021 808 2167

021 938 9368

021 808 3632

021 938 9202

021 808 4941/4642

082 807 2994

021 938 9507/9500

021 808 4994

021 808 2491/2493

021 808 2491/2493

021 808 2810

021 808 9111

021 808 4428

021 938 9591

021 938 9111

021 932 2888

021 938 4911

021 938 9591

021 938 9591

**IMPORTANT**  
**numbers**



# TYGERBERG CAMPUS MAP





JESUS  
TURNED  
WATER  
INTO  
WINE  
AND HUNG  
OUT WITH  
PROSTITUTES



*Grace  
Life*

DISCOVER JESUS'  
UNCONDITIONAL  
LOVE & GRACE  
FOR YOU

WWW.GRACELIFEMINISTRIES.CO.ZA

2015

DIE OORSPRONKLIKE  
EERSTE JAARSKAMP

AANGEBIED DEUR DIE NG KERK, STELLENBOSCH KRUISKERK | MOEDERKERK

#EVERYDAYHERO

18-21 JANUARIE  
KOSTE R550

SKRYF IN VOOR 12 JANUARIE 2015 BY  
WWW.KRUISKERK.COM/EERSTEJAARSKAMP2015

MEER INLIGTING: KAMP@KRUISKERK.COM | WWW.KRUISKERK.COM |

021 883 3458 | 072 969 5915 |



/KRUISKERKEERSTEJAARSKAMP



@KRUISKERKCOM

## First-year camps

Various student societies, including religious affiliations, offer a variety of camps for first-year students just before Stellenbosch University's official welcoming programme commences in January 2015. These camps do not form part of the institutional welcoming programme of SU, but are offered by registered student societies. As a prospective student you should familiarise yourself with the objectives and values of the various student societies before enrolling for a first-year camp.





## GET READY FOR THE CAMP OF THE YEAR!!!

### 18-21 JANUARY 2015

### VENUE: PMR WELLINGTON

REGISTER ONLINE @  
[WWW.CRCCAPETOWN.CO.ZA](http://WWW.CRCCAPETOWN.CO.ZA)

CRC THE PLACE TO BE!



#### CRC CAPE TOWN

UNIT 7, LUDEL PARK,  
 CORNER OF KOEBERG &  
 1 LUDEL AVENUE  
 MONTAGUE GARDENS, 7441  
 021 552 4096

#### CRC STELLENBOSCH

STELLENBOSCH PRIMARY  
 SCHOOL, ENDLER STREET,  
 MOSTERTSDRIF  
 STELLENBOSCH, 7600  
 021 883 8402

#### CRC MITCHELLS PLAIN

YELLOWWOOD PRIMARY  
 CORNER OF YELLOWWOOD  
 & SKELETON STR, EASTRIDGE  
 MITCHELLS PLAIN, 7798  
 021 552 4096

### 1ST YEAR CAMP



## AMPLIFIED

first years' camp 2015

18-21 January 2015  
 R540 / Stellenbosch



## JOIN US!

for an epic fun crazy camp

Activities on the camp:

Adventure activities

Paintball & Amplified band

Maak awesome nuwe vriende



KIBWE KIDS



BRIDGING ABILITIES

INSPIRED2BECOME!

youth development through sport

community  
 keepers



PROCHORUS

register online today!

[www.amplifiedonline.org](http://www.amplifiedonline.org)

[info@amplifiedonline.org](mailto:info@amplifiedonline.org)

facebook: amplified students





# TYGERBERG 1<sup>ste</sup> JAARS CHRISTELIKE KAMP

DARE TO PREPARE  
YOUR HEART!

4 days, 3 nights,  
Camp for fun & games

Fellow 1<sup>st</sup> years, Friendly seniors

Most importantly, have a meaningful connection with God  
#GodEncounters

For more info & application forms visit →

16-19 JAN  
2015

Find us:  
Tygerberg First Years Christian Camp  
on  
[tygerbergFYC@tumblr.com](mailto:tygerbergFYC@tumblr.com)  
on  
<https://twitter.com/tygFYC2015>  
on  
Call Abram @ 072 231 4129

## "JOU KAARTJIE NA SUKSESVOLLE STUDENTWEES!"

'n onvergeetlike, opwindende reis!! Ons ry vanaf die eerste skof saam met jou.

### Gereformeerde Studente Stellenbosch bied aan:

Eerstejaarskamp 2015

Datum: 17-21 Januarie

Koste: R590

Navrae en inskrywing: [eerstejaarskamp@gkstellenbosch.co.za](mailto:eerstejaarskamp@gkstellenbosch.co.za)

of Janet 072-555-5677 of Ds Johan 082-929-1733

Besoek ons webtuiste: [www.gkstellenbosch.co.za](http://www.gkstellenbosch.co.za)



2015



## 4 EASY STEPS TO SUPPORT STELLENBOSCH UNIVERSITY

Students and parents can now support Stellenbosch University (SU) without it costing you a cent. Swipe your *MySchool* card whenever you shop at any of the participating retailers nationwide and a percentage of the transaction will be donated to SU.

My School / MyVillage / MyPlanet is South Africa's biggest community support programme which raises funds for schools and other organisations to improve education and social development.

### How does it work?

1. Get a free card online or simply phone 0860 100 445. You can also get a card at any Woolworths store.
2. Nominate Stellenbosch University as your beneficiary.
3. Swipe your card whenever you make a purchase at any partner store (these include Woolworths, Engen Quickshops, Toys R Us, Waltons, Reggie's, kalahari.com, Power24 and many more).
4. The partner will donate a percentage of your purchases to your beneficiary!

As an added bonus you will receive exclusive discounts and special offers from selected partners, such as **WRewards** at Woolworths. You will also receive monthly statements via email showing your transactions and how much has been raised for your beneficiary.

For more information visit [www.myschool.co.za](http://www.myschool.co.za) or send an e-mail to Client Services at [cs@myschool.co.za](mailto:cs@myschool.co.za) or call 0860 100 445.

## 4 MAKLIKE STAPPE OM UNIVERSITEIT STELLENBOSCH TE ONDERSTEUN

Studente en ouers kan die Universiteit Stellenbosch (US) ondersteun sonder dat dit jou 'n sent kos. Gebruik jou *MySchool*-kaart wanneer jy inkopies doen by enige van verskeie deelnemende kleinhandelaars landwyd en 'n persentasie van jou aankope sal aan die US geskenk word.

MySchool/MyVillage/MyPlanet is Suid-Afrika se grootste gemeenskapsondersteuningsprogram wat fondse insamel vir skole en ander organisasies en sodoende opvoedkundige en maatskaplike ontwikkeling bevorder.

### Hoe werk dit?

1. Kry 'n gratis kaart aanlyn of skakel 0860 100 445. Jy kan ook by enige Woolworths-winkel 'n kaart kry.
2. Nominer die Universiteit Stellenbosch as jou begunstigde.
3. Gebruik jou kaart wanneer jy aankope doen by onder meer Woolworths, Engen Quickshops, Toys R Us, Waltons, Reggie's, kalahari.com en Power24.
4. Die vennoot sal 'n persentasie van jou transaksie aan jou begunstigde sken.

Boonop sal jy eksklusiewe afslag en spesiale aanbiedings ontvang van uitgesoekte vennote soos **WRewards** by Woolworths. Jy sal ook 'n maandelikse staat per e-pos ontvang wat jou op hoogte hou van jou inkopies en hoeveel daar vir die US ingesamel is.

Vir meer inligting besoek [www.myschool.co.za](http://www.myschool.co.za) of stuur 'n e-pos na [cs@myschool.co.za](mailto:cs@myschool.co.za) of skakel 0860 100 445.