



Stellenbosch
UNIVERSITY
IYUNIVESITHI
UNIVERSITEIT

forward together
sonke siya phambili
saam vorentoe

Adapting assessment in an Academic Literacies module in the AI era

Sharon Malan

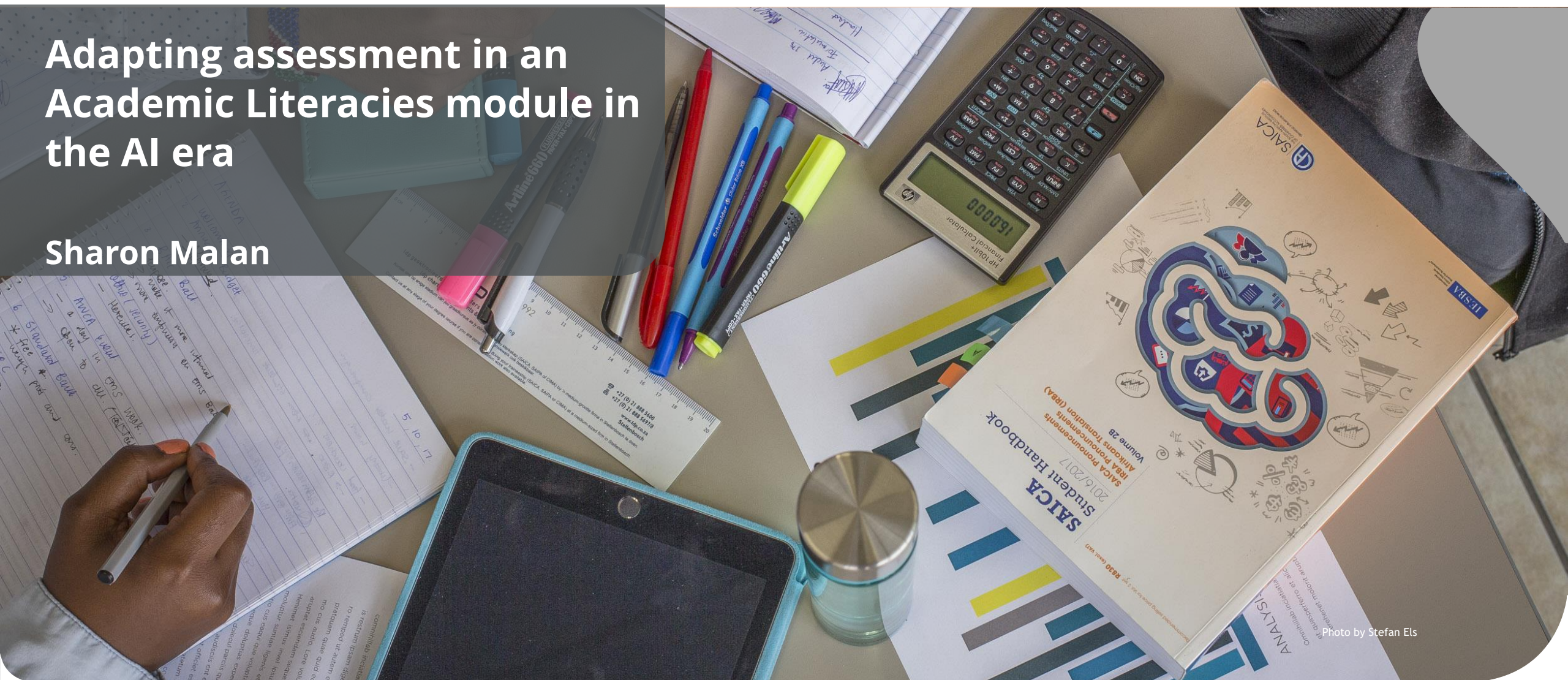


Photo by Stefan Els

- ✓ Why I adapted my assessment practices
- ✓ How I adapted it
- ✓ My observations of these changes



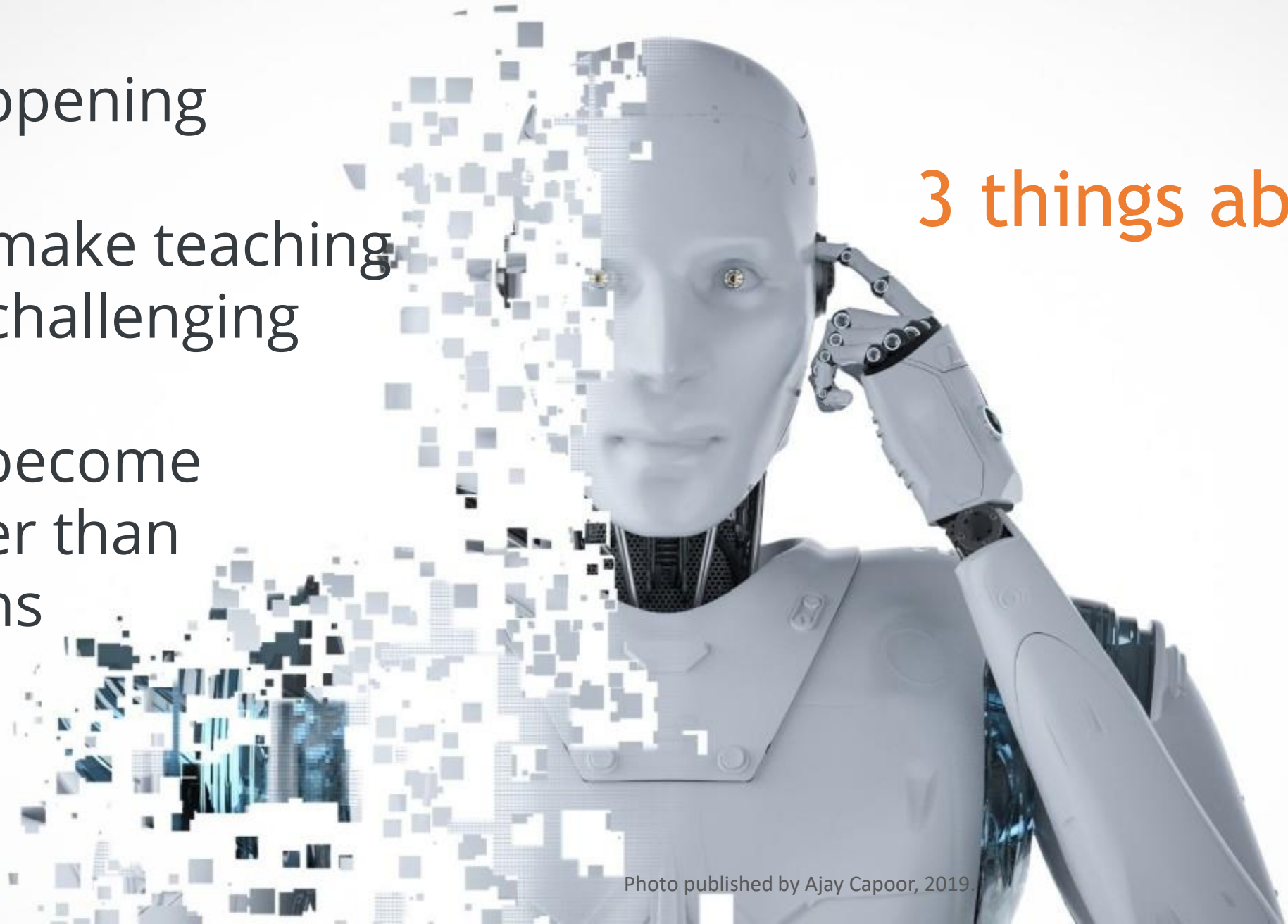
Photo by charlesdeluvio on Unsplash

It's happening

It can make teaching
more challenging

It will become
smarter than
humans

3 things about AI



- ✓ Personalized & interactive
- ✓ Fosters equity
- ✓ A mirror for TLA practices



Photo published by Ajay Capoor, 2019.

Overall outcome of module

Why I adapted my assessment practices

... to empower students to develop critical thinking skills through speaking, reading, and the writing of well-organized, persuasive argumentative essays in economics



Katie Szymanski, Could AI impact UX writing?

Writing is thinking. And when something else is doing the writing, I'm not thinking. There is a risk that our thinking becomes impoverished and superficial when we outsource writing to machines. Rowe, M. 2023.



Sally Kerrigan, 2014. 'Writing is thinking. Published in Community writing.

Webinar



AI: friend or foe?

Tuesday 28 February 2023 | 2-3 pm (GMT)



With guest speaker:

Robin Crockett

Academic Integrity Lead,

The University of Northampton

AI doesn't
write. It merely
generates text.

Writing...

- ✓ Express thinking on paper
- ✓ Clarify ideas
- ✓ Organize thinking
- ✓ Refine perspectives
- ✓ Encourage introspection



Sally Kerrigan, 2014. 'Writing is thinking. Published in Community writing.



Photo by ilgmyzin on Unsplash

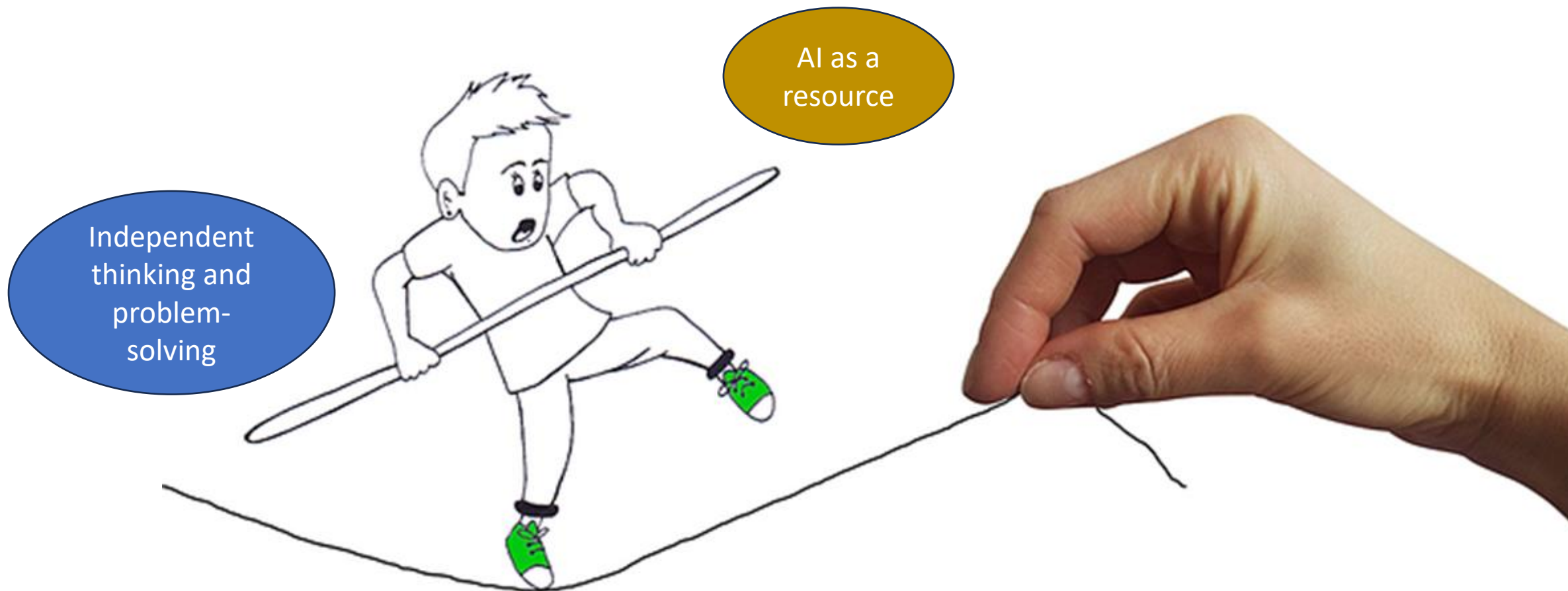


Sparks were seen to fly from the front of the plane due to what is thought to have been a problem with the nose landing gear (Picture: Storyful/YouTube)

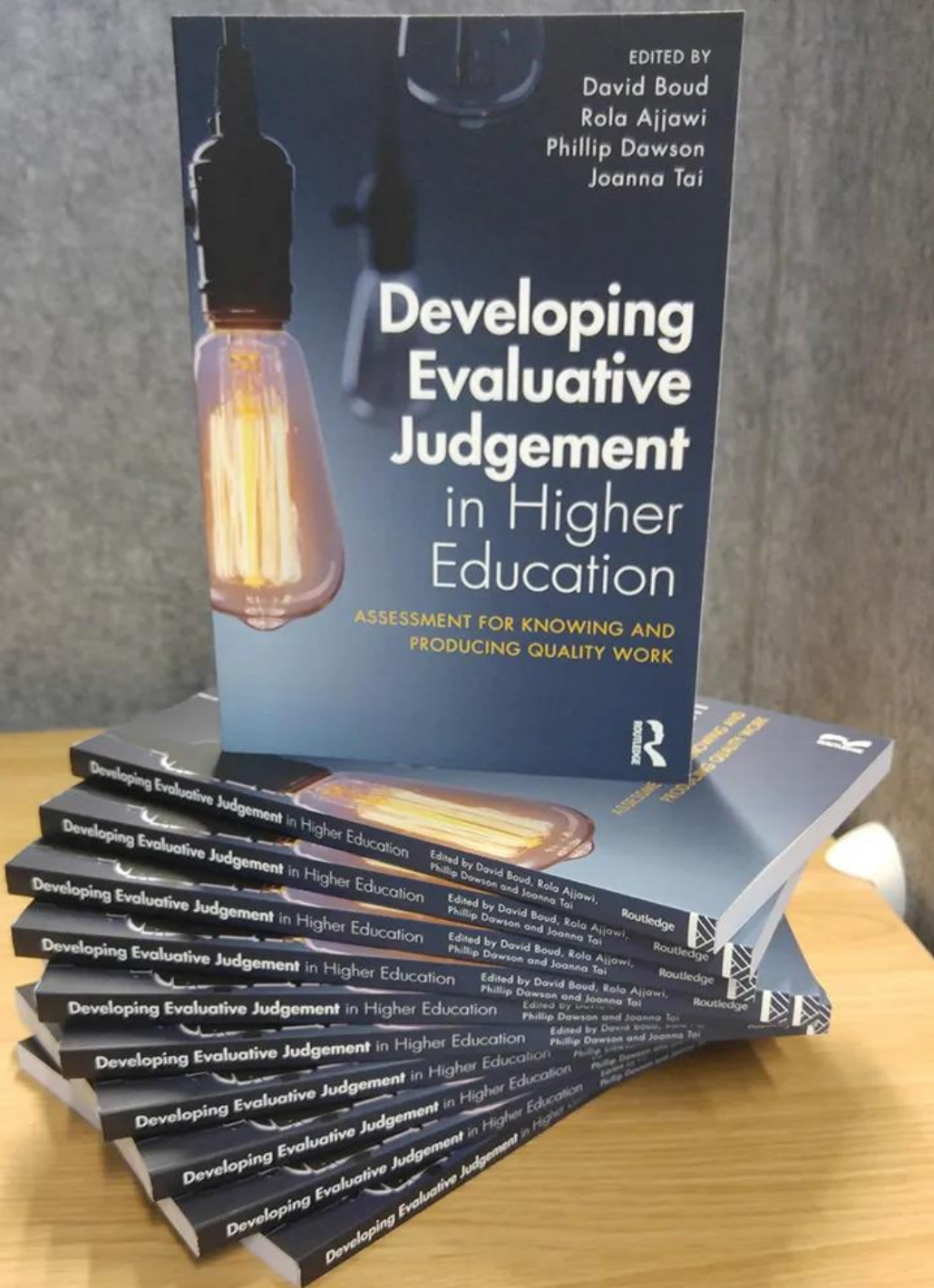
- 
- ✓ Deep engagement
 - ✓ Understanding & LT retention
 - ✓ Metacognition
 - ✓ Critical thinking
 - ✓ Approach problem from different angles
 - ✓ Alternative solutions
 - ✓ Adapt thinking



Photo by [Glenn Carstens-Peters](#) on [Unsplash](#)



How I adapted my assessment practices



“...the capability to make decisions about the quality of work of oneself and others”.

Art of persuasion

A Workbook for ARGUMENTS

A Complete
Course in
Critical
Thinking



David R. Morrow & Anthony Weston

inequality

climate change

sustainable development

unemployment

resource scarcity

environment

economic development

inflation

recession prevention

globalisation

growth


optimisation

productivity

SCHOOLS, UNIVERSITIES & TRAINING • 24 NOV 2020

What do economics students see as today's biggest challenges?

Debate

An illustration depicting economic inequality. On the left, a wealthy, multi-story building with a red roof and a clock tower sits on a lush green cliff. Money is falling from the building. On the right, a poor, dilapidated shack with a corrugated metal roof sits on a barren, brown cliff. The background is a bright blue sky with white clouds.

Does economic growth make the rich richer and the poorer poorer?

Group concept maps

Source 2:

An overview of poverty and inequality in South Africa- **Ingrid Woolard article**

Why am I reading this: To understand how poverty and inequality works, appears and its consequences in South Africa

Thesis: Despite South Africa being a developing/upper middle-class country, inequality, hunger, poverty and overcrowding is evident.

Topic question: How does inequality and poverty appear In South Africa and what are the causes and consequences of it.

Summary:

South Africa has a GDP of 419 billion USD (**-world bank**), making it a **developing**, upper **middle-income** country, however South Africa is also a country of immense inequality, impoverishment, hunger and overfull. Poverty holds many aspects, a vast majority of South Africa (specifically black race groups) experiences poverty while a minority thrives off the wealth of the country. Living standards and race correlate. Due to the restricted past economic **policies**, many race groups (black, colored, Indian) were denied **vertical mobility** from **labor markets**, making the income distribution skewed. Households with low wage income is the major cause for inequality and poverty. The poor cannot access healthcare and education. Thus, increasing mortality amongst the poor, making



watter bron	definisies	ongelykheid in SA	ongelykheid wêreldwyd (meeste swak).	ongelykheid van inkomste	meet lewenstandaard	meet ongelikheid	oorsake van ongelikheid	die impak van ongelikheid	oplossings	teenargument	eie kommentaar	vrae
Diane Coyle skrywer van GDP boek wat geselsaam met Russ Roberts oor die geskiedenis van BBP, die gebruik en misbruike daarvan.	BBP- (bruto binnelandse produk) die totale waarde van alles wat in 'n gegewe tydperk soos 'n jaar geproduseer word. Kom ooreen met gemiddelde jaarlikse inkomste.				BBP per capita (bruto binnelandse inkomste)		groot depressie, wêreldoorlog twee	Diane Coyle praat van gedurende die groot depressie het die regerings niks aan die verswakte ekonomie gedoen nie, dit het beteken dat werkloosheid en hongersnood sigbaar geword het.	uitset van intermediêre goedere wat insette tot finale produksie is, word uitgesluit om dubbeltelling te voorkom.	mense stel net belang in die groei van BBP, maar elke 5 jaar kyk hulle na die ekonomie as 'n geheel wat hoë gewigte op sekere afdelings van die land plaas, bv. die goud industrie. daar is geen doel om dit eintlik te meet nie, die BBP verander elke dag, en dit word nooit dan eintlik akkuraat gemeet nie.		om die groei van goedere en dienste bymekaar te tel en die waarde van BBP per capita te bereken vir die totale inkomste van die land deur die populasie van die land te deel. BBP per capita is dit wel die regte manier om BBP per capita te
Meet inkomste en lewenstandaard. Diane Coyle se gesprek met Russ Roberts vervolg.							die erge verhoging in seker kosse lei tot die geval dat armes nie dit kan bekostig nie en ander opsies moet oorweeg, waar rykes steeds die styging in pryse kan bekostig en nie geraak word nie, ongelikheid verhoog dan vinniger.	die waarde op bv. boekspas verhoog erg wat dit moeilik maak vir huishoudings om dit te bekostig.	die voorbeeld waar 'n limiet op die groei van die BBP gestel moet word om innovasie te stop, maar innovasie is groei, en variasie van produkte is nodig vir die BBP om te groei in vandag se tyd.		die voorbeeld waar daar al 'n tegnologiese TV program begin is in die 1800's, maar die aanbieder kon nie haar hare gereed en netjies kry vir die program nie, omdat daar nog nie sjampoo ontwikkel het nie. die waarde op toerusting was en is nog steeds belangriker.	
	90/10 verhouding - die verhouding tussen twee individuele se inkomste by die negentiende en			in elke land kan dit verwys word dat die ryk meer het as die arm. die 90/10 verhouding word gebruik tussen die							kan die lande nie net fokus om hulle eie ongelikheid op te los en daardeur	

Weekly structure

Monday: Lecture & exercises (come to class prepared)

Tuesday: Write

Wednesday: Feedback

Thursday: Reflect on feedback

Friday: Improvement

PEER REVIEW OF PEER 1 on

Give feedback on peer 1's essay. Use the **rubric at all times** (only the part that is **applicable**) to help you with the feedback.

1. This is the **BEST thing** of peer 1's paper with specific examples.
2. Here are the **two or three most important areas** in which peer 1 needs **to improve** in an order of descending importance. Give specific examples.
3. Here are **practical solutions** I can offer peer 1 to correct the problem for the next draft.

Adapted from Elkhoury, 2023

Examples of feedback

Introduction edits

- ~~the~~ and ~~the~~ have both suggested that I add a more engaging opening sentence.
- ~~the~~ said when I mention “money” I am redundant in terms of how my topic should be addressed so I have decided to take it out as when I mention poverty, we can assume that people have a lack of “money”
- ~~the~~ said I should link increased poverty to education and health care as I just mentioned “increased poverty”
- DR Malan said I should improve my third argument as the tax was not suited in the main topic of argument
- I then added my new argument as unequal employment opportunities

The gap between the wealthy and the poor expands daily as the wealth of the world's billionaires continues to rise. When there is a significant gap between the rich and the poor, it can create social and economic problems, such as reduced social mobility, increased poverty, such as a lack to education and health care, and political instability. Tax can play a role in promoting or hindering inequality, this can influence people's access to healthcare, ~~money~~, education, and employment.

REFLECTION ON PEER REVIEW

Fill in the following reflection sheet in detail



Stellenbosch
UNIVERSITY
IYUNIVESITHI
UNIVERSITEIT

forward together
sonke siya phambili
saam vorentoe

Comparing my introduction with the exemplar

1. What are the two main differences in this introduction and mine? Explain.
2. What did I learn from these differences? Explain.
3. Overall, which is better - my introduction or this one? Explain.

Reflecting on feedback from peer 1

1. Take an example(s) from a commentary from peer 1 that you agree with and motivate why you agree.
2. Take an example(s) from a commentary from peer 1 that you disagree with and motivate why you disagree.

Reflecting on feedback from peer 2

1. Take an example(s) from a commentary from peer 2 that you agree with and motivate why you agree.
2. Take an example(s) from a commentary from peer 2 that you disagree with and motivate why you disagree.
3. From reviewing all 3 essays (2 of your peers and the exemplar), name two things you are going to do to improve your introduction.

Submit your reflection to Dr Malan during class.

Now make the improvements to your introduction

Thesis: South Africa's rich and complex history, shaped by segregation, continues to create an unbalanced distribution of wealth that affects social cohesion overall hindering economic

Argument one:

Distribution of wealth individually (impact) and measurement of country's wealth. Using recent evidence of South Africa's GDP and the Gini-index. Mentioning the market SA competes with.

Argument two:

The generational effects of segregation such as displacement academically, financially and the impact thereof on standard of living. Example of access to education and jobs (discriminatory).

Argument three:

The hierarchal chain that widens the gap between the rich and the poor considering socioeconomic factors and rooted discrimination which impacts the social cohesion which hinders progression socially and economically.

Counterargument: The vertical movement individually induced through investment in education, innovative solutions to increase economic growth, reducing wealth gap. For example, creating stability through resources.

Rebuttal: Effects on stability by the lack of political control, management of resources, inadequate services, unemployment, fluctuations in the market and lack of concern for societal well-being increases inequality and distribution thereof.

Examples of improvements

IMPROVEMENT (2) INTRODUCTION:

~~The gap between the wealthy and the poor expands daily as the wealth of the world's billionaires continues to rise. In South Africa the gap between the rich and the poor expands daily, as the wealth of the rich continues to rise. In 1994, the democratic transition, in some ways, only worked to favour the already wealthy while leaving many in poverty, despite the promise that democracy would bring equality and prosperity to all. When there is a significant gap between the rich and the poor, it can create social and economic problems, such as reduced social mobility, increased poverty, such as a lack to education and health care, and political instability. Tax reductions can play a role in promoting or hindering inequality, this can influence people's access to healthcare, education, and employment. Therefore, addressing inequality is essential to establishing a fair and just society where everyone has an equal chance to prosper and realize their potential.~~

I have decided to take the last sentence out as my essay is not about how to address inequality but more about how inequality in south Africa makes the rich richer and the poor poorer

NEW INTRODUCTION (FINAL)

In South Africa, the gap between the rich and the poor expands daily, as the wealth of the rich continues to rise. In 1994, the democratic transition, in some ways, only worked to favour the already wealthy while leaving many in poverty, despite the promise that democracy would bring



Photo by Jungwoo Hong on Unsplash

Assessment AS learning

An educational approach where the process of assessment is viewed as an integral part of the learning experience itself.

I used the main summative assessment opportunity (A2) AS a further opportunity to learn

General instructions



1. Read the information on this (1) **question paper** (2) and the accompanying **answer book** (3) and **rubric**, provide your details on all three and sign all three.
2. Answer all questions in **ink** in the answer book and rubric provided.
3. This question paper consists of 10 pages – please ensure that you have received all the pages.
4. You have to submit the **question paper**, and the **essay with your own scribbled notes** on it along with the **rubric** and **answer book**. Thus, **submit everything**.

Specific instructions

5. This paper consists of 6 main questions.
6. Answer all questions.
7. Keep the numbering of your answers identical to the numbering on the question paper.
8. Ensure that you answer the questions as completely as possible, providing specific examples and evidence where necessary.
9. Write your answers in **full sentences**.

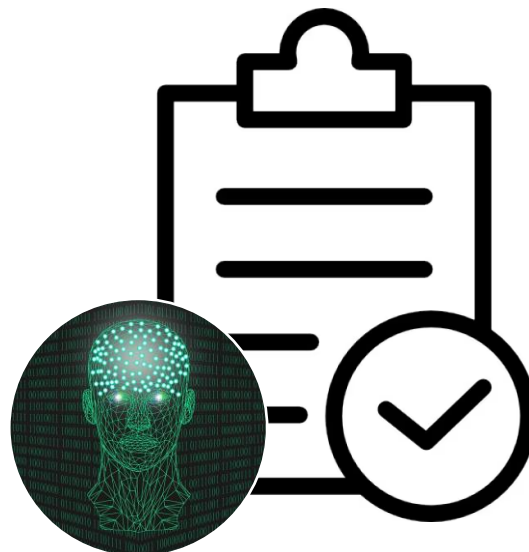
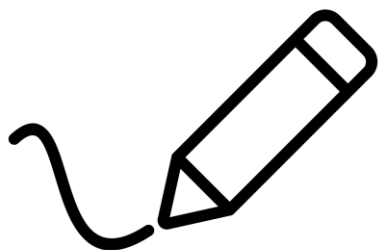
Evaluating an argumentative essay generated by AI (Artificial Intelligence)

This test will require you to critically analyse and evaluate an **argumentative essay** generated by ChatGPT on the following topic: **Can machine intelligence replace human intelligence?**

ChatGPT is a large **language** model trained by OpenAI. Here are the biggest **weaknesses of ChatGPT** that you need to be aware of:

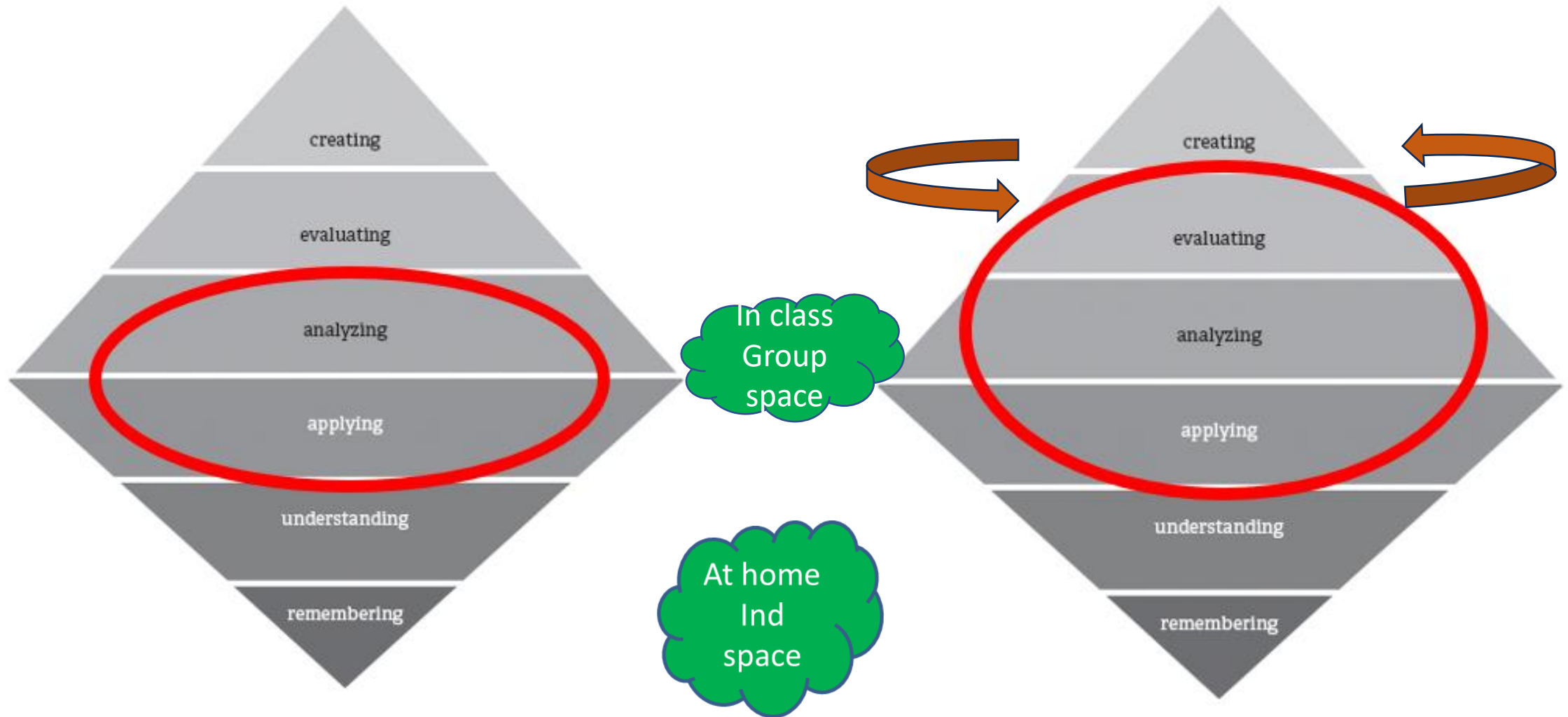
1. It lacks the common sense knowledge that humans possess.
2. It can sometimes fail to understand the context of a conversation which can lead to misinterpretations.
3. It may produce responses that perpetuate certain stereotypes or reinforce existing prejudices.
4. It currently does not have access to the internet, thus information may be outdated.
5. It also has no way of verifying if the content that it generates is accurate, or consistent.
6. It does not have the ability to match relevant sources to any given topic.
7. It may also fabricate sources that do not exist. So, be wary of asking ChatGPT to summarize a particular source, or write your literature review.

Read the following essay generated by AI critically before answering the questions that follow. Answer all questions in ink in the answer book provided.



IMPROVEMENT

Maximising face-to-face time



A2 test on Monday 22 May (9:00-11:00) at VDSterr 2058
Evaluating an argumentative essay generated by AI (Artificial Intelligence)

The scenario and essay are made available online to you 24 hours before the actual test commences. You may bring a PRINTED scenario and essay along to the test venue on Monday 22 May. You are encouraged to make notes **ONLY on the 2 PRINTED pages** of the essay as received, which can be handed in along with the answer book and the question paper.

The scenario

This test will require you to critically analyse and evaluate an argumentative essay generated by ChatGPT on the following topic: Can machine intelligence replace human intelligence?

ChatGPT is a large language model trained by OpenAI. Here are the biggest **weaknesses** of ChatGPT that you need to be aware of:

1. It lacks the common sense knowledge that humans possess.
2. It can sometimes fail to understand a conversation's context, leading to misinterpretations.
3. It may produce responses that perpetuate certain stereotypes or reinforce existing prejudices.
4. It currently does not have access to the internet, thus information may be outdated.
5. It also has no way of verifying if the content that it generates is accurate, or consistent.
6. It does not have the ability to match relevant sources to any given topic.
7. It may also fabricate sources that do not exist. So, be wary of asking ChatGPT to summarize a particular source, or write your literature review.

Read the following essay generated by AI critically. You are allowed to make notes on the essay.

Essay generated by AI (Artificial Intelligence)

Topic: Can machine intelligence replace human intelligence?

The idea of machines replacing humans is not new. Ever since the dawn of the Industrial Revolution, humanity has been plagued by an overwhelming sense of apprehension and dread about the looming threat of machines in the workforce. With the relentless advancement of artificial intelligence, this fear has now mutated into an all-consuming terror that haunts us day and night, leaving us helpless and vulnerable in the face of an uncertain future. While machines and artificial intelligence have made significant strides in recent years, there are certain

I'm still
un-insightfully
robotic, for
now!



QUESTION 3

(Counterarguments)

[10 marks]

- 3.1 Identify and write in **your own words** the counterargument(s) that AI presents in this essay. (1)
- 3.2 How does AI address and refute the counterargument(s) or opposing viewpoints and does it do so effectively? Explain your answer in your own words. (3)
- 3.3 The introduction perpetuates two flawed stereotypes since they are not representative of the full picture. What does the word 'stereotypes' mean and what are the two flawed stereotypical ideas? Keep your answers short and to the point- no more than 12 words each! (2)
- 3.4 How would you refute or counter each of the two flawed stereotypical ideas? (4)

QUESTION 6

(Overall impression)

[10 marks]



Stellenbosch

UNIVERSITY
IYUNIVESITHI
UNIVERSITEIT

forward together
sonke siya phambili
saam vorentoe

Evaluate the whole essay generated by AI on the following rubric.

Fill your answers onto the **rubric handout** that is provided in your answer book.

Make sure your name, surname and student number appears on the rubric.

6.1 In the marks column, clearly indicate what **mark** you will give **for each of the elements** in this essay and **your reasons** for giving each of those marks.

Your reasons should be much more **specific** than the rubric and include **examples** from the essay. (6)

6.2 Add up all your marks and provide an overall mark out of 100. (2)

6.3 Now provide **general feedback** for the AI author/agent (Maximum one or two sentences). (2)

Students essay analysis & evaluation notes before the test

Note: Argument 2

Add sources / information to describe the importance to think critically and make decisions. Add linking sentence to describe the creativity of humans and machines.

Rule 6: **consistent terms**; use critical thinking to make connection clear.

R4: **concise & concrete**; be specific about which tasks. source is already used.

In the same way as

Another crucial aspect of human intelligence is our ability to think critically to analyze information, evaluate its relevance, and draw logical conclusions. Machines are data - and not human intellect based. They lack the ability to think at the level of critical thinking. While machines can analyze data, they lack the ability to draw conclusions based on it (Kurzweil, 2012.) X (Kurzweil, 2012).

Furthermore, machines lack the ability to be creative. Creativity is a key aspect of human intelligence. It is what allows us to think outside the box and come up with new ideas because they are programmed to follow a set of rules. They lack the ability to think creatively (Searle, 1980). *Add sources from paragraph 2 (2014 instead of 1980)*

despite Many believe that machine intelligence can advance to the point where it can replace human intelligence in many areas, from complex calculations to pattern recognition (Ferreira, 2017). *such as writing a essay.* Machines learn and adapt at an incredible speed, machines have the potential to replace humans in a range of tasks, resulting in increased efficiency and productivity (Dennett 2017). *lead to, resulting in...* However, while machine intelligence has made significant advancements in recent years, there are still areas where human intelligence is essential. [For example, machines lack the creativity, empathy, and emotional intelligence that are crucial in many industries, such as the arts, healthcare, and social work (Russell, 2017).] Machines can only operate within the parameters set by their programming, while humans have the capacity to think beyond established limits and discover new solutions to complex problems.

Read the following essay generated by AI critically. You are allowed to make notes on the essay.

Essay generated by AI (Artificial Intelligence)

Topic: Can machine intelligence replace human intelligence?

↳ Not a good opening sentence.

↳ loaded language: Since

↳ unreliable P: - claims without support

The idea of machines replacing humans is not new. Ever since the dawn of the Industrial Revolution, humanity has been plagued by an overwhelming sense of apprehension and dread about the looming threat of machines in the workforce. With the relentless advancement of artificial intelligence, this fear has now mutated into an all-consuming terror that haunts us day and night, leaving us helpless and vulnerable in the face of an uncertain future. While machines and artificial intelligence have made significant strides in recent years, there are certain aspects of human intelligence, that cannot be replicated or replaced by machines.

To start with, it is essential to understand what we mean by intelligence. Intelligence is the ability to learn, understand, and apply knowledge to solve problems. Machines are designed to perform tasks based on pre-programmed instructions (Bostrom, 2014). They can process data at a speed that is impossible for humans, and they can analyze large amounts of data with precision. However, they lack the flexibility and creativity of human intelligence (Brynjolfsson, et al. 2014). X (Brynjolfsson & McAfee, 2014).

Humans are not just intelligent; we are also emotional. Emotions are essential for our decision-making process. Machines lack the ability to feel emotions, and this is a significant disadvantage. Human beings have the ability to empathize with others and make decisions that take into account the feelings of others. Machines cannot do this. Machines can only make decisions based on the data they have been programmed to analyze, which can lead to unintended consequences. One example of how emotions play a critical role in decision-making is in the healthcare industry. Doctors often need to make difficult decisions about their patients' treatments, and these decisions can have significant emotional and ethical implications. In a study conducted by Stanford University researchers found that physicians who had high levels of empathy and emotional intelligence had better patient outcomes, including fewer medical errors, increased patient satisfaction, and better adherence to treatment plans. The study also found that patients who perceived their physicians as more empathetic were more likely to adhere to treatment plans and had better health outcomes (Hinton, G. (2018)). This research underscores the crucial role of emotions in healthcare decision-making, and highlights the importance of training healthcare professionals in emotional intelligence and empathy - a skill that AI does not have.

rule 1:
identifying
P & C
no thesis,
no evidence.

rule 3:
fact.

Not necessary

Rule 2: natural
order = C → P's

premise →
conclusion

Rule 4: clarity
and concise:
use definition.

Generalization?

Introduction: Thesis is vague and imperceptable
where is it?

Loaded language - use of neg conn words
to evoke emotions of fear, upset
& aversion to AI

↳ use of appeal to emotion fallacy

Does not state any arguments to follow, very weak
Shows ChatGPT doesn't know the structure of
an argumentative academic essay

1st argument - arg itself is good - good, strong claim
little premise, evidence and backing for claim

"To start with" - informal register, bad intro into
arg, use academic lang.

Emotional language

L.2	plague x	negatively impacted on ✓
	creed x	reluctance ✓
	mutilated x	spread ✓
	all-consuming terror x	concern ✓
	relentless x	continuous ✓

Student responses on the test scripts

0-11	Mark 11/30
AI does not succeed in explaining or integrating information.	<p>Reason & example</p> <p>The AI repeats a lot of what it is saying through the essay. The content is very basic, broad and generalized. The sources are not relevant in the slightest.</p> <p>Ex: Paragraph 3: Healthcare</p>

GENERAL FEEDBACK: Maximum 1 or 2 sentences for the arguments. The essay lacks evidence and premises for the arguments. It is loaded with emotional language and bias.

My observations



Photo by [DJ Johnson](#) on [Unsplash](#)



Imperfect nonsense



Imperfect sense



‘perfect’ sense



Stellenbosch

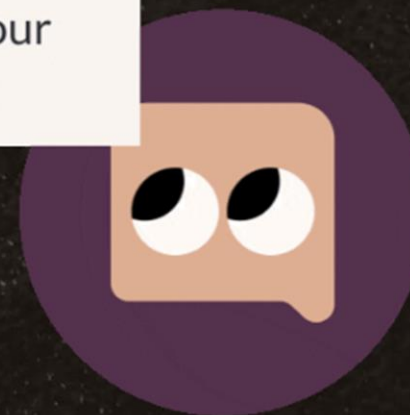
UNIVERSITY
IYUNIVESITHI
UNIVERSITEIT

forward together
sonke siya phambili
saam vorentoe

**UNDER
CONSTRUCTION**

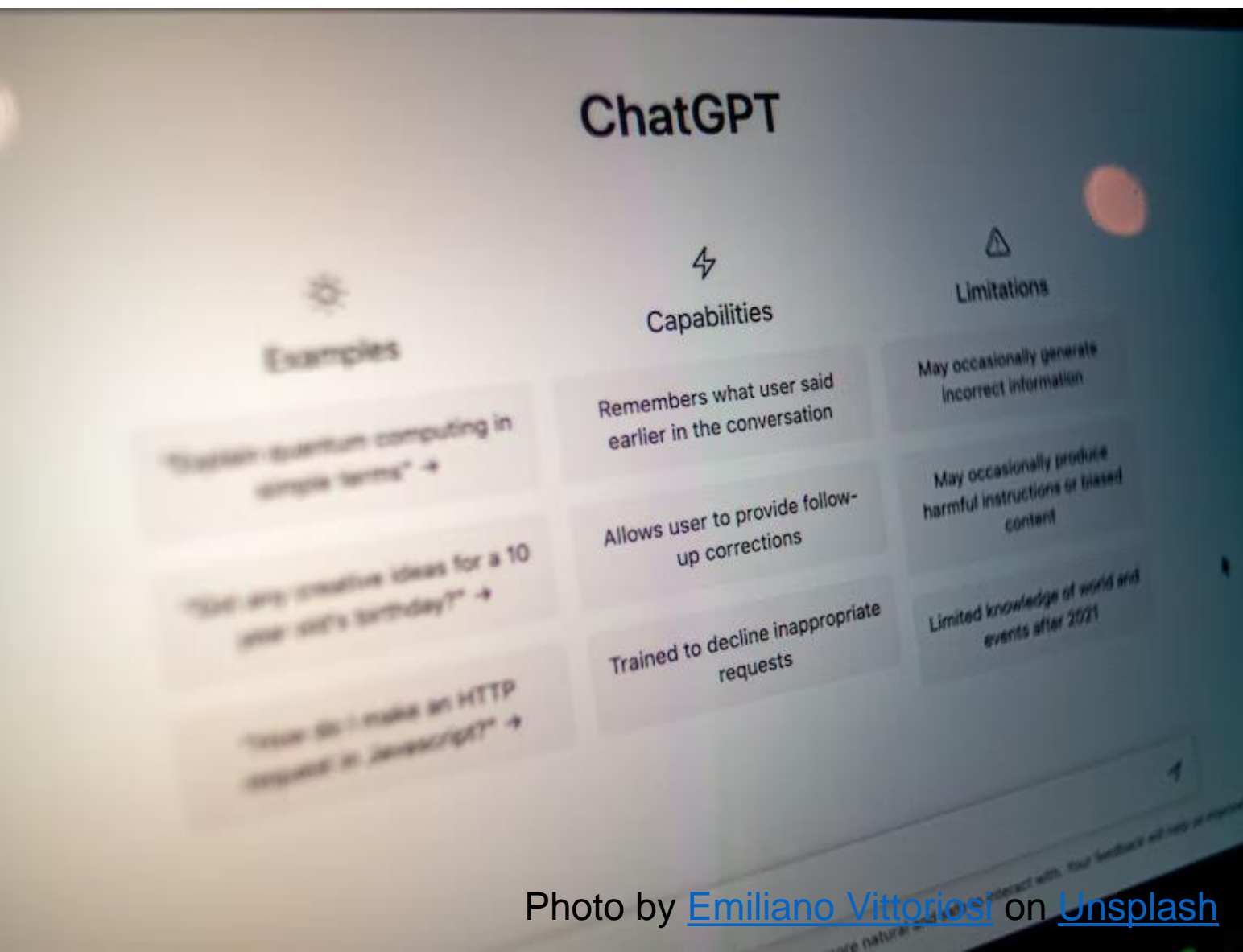


Hi, I'm Khanmigo! Ask
me anything—I'm your
new learning guide!



Can you just tell me the answer?

It's important that you learn how to do this
yourself! What do you think you need to do
to multiply 2 by $\frac{5}{12}$?



If ChatGPT can do a job as well as (better) as a person, then humans shouldn't duplicate those abilities; they must surpass them...we must produce graduates who can do things that the tools can't.



Thank you

Photo by D koi on Unsplash

References

- Adendorff, H. 2023. Our HE responsibility [Webinar]. Discussion: AI and Teaching-Learning assessment (TLA) at SU – Where are we? 8 March 2023
- AI2 in Higher Education: ChatGPT and its Implications for Teaching, Learning, and Assessment
- Boud, D., Ajjawi, R., Dawson, P. & Tai, J. (Eds.). 2018. Developing evaluative judgement in higher education: assessment for knowing and producing quality work. Routledge
- Coetzee, M. 2023. Personal interview. Conversations on ChatGPT, 13 March, Stellenbosch.
- Crockett, R. 2023. Turnitin: AI friend or foe seminar. Academic Integrity Lead, University of Northampton, 28 February 2023.
- De Villiers, M., Joubert, D., Southey, P. & Adendorff, H. 2023. [Auxin]. Artificial intelligence in higher education: ChatGPT and its implications for teaching, learning, and assessment. [12 Apr 2023].
- Elkhoury, E. 2023. Alternative assessment in the AI era. [Presentation at Stellenbosch University.
- George, E. 2023. Personal interview: Conversations on ChatGPT. 28 March, Stellenbosch.
- Jansen, J., Cronje, J. & Cronje, F. 2023. The implications of ChatGPT for assessment in Higher Education. [Webinar]. The 11th ASSAf Presidential Roundtable discussion. Available: <http://hdl.handle.net/20.500.11911/275> [22 February 2023].
- Kram, N. & Rowe, N. 2023. HELTASA: How do we navigate the AI hype together? Digital dialogue series. Available: <https://heltasa.org.za/key-takeaways-how-do-we-navigate-the-ai-hype-together/> [15 March 2023.]
- Lambert, M. & Twala, B. 2023. The impact of Artificial Intelligence (AI) on scholarly writing and publishing. [Zoom webinar]. Academy of Science of South Africa. Available: <http://hdl.handle.net/20.500.11911/317> [23 March 2023].
- Lütge, C. 2023. AI and ethics: SU School for Data Science and Computational Thinking. [Colloquium]. 9 March 2023.
- Pallitt, N., Bali, M & Gachago, D. 2023. Social justice in African Digital Contexts: Compassionate assessment design with AI [Colloquium].
- Policy: Stellenbosch University Centre for Teaching and Learning. 2017. Strategy for teaching and learning 2017-2021 [Online]. Available: <http://www.sun.ac.za/english/learning-teaching/ctl/Documents/SU%20TL%20Strategy.pdf> [2020, May 6].
- Staffel, J. 2023. Writing assignments and Chat GPT. [Video]. University of Colorado Boulder.
- Strever, A., Joubert, D. AI2 Auxin: AI-enabled learning: Experience with embracing AI in T, L & A. 23 May 2023.
- Van der Merwe, A. 2023: ChatGPT's implications for TLA.

Past (prior to ChatGPT)

Critical thinking & writing skills
Ethical use of sources
Research – library visit
Actual writing mostly done at home (graded)
Weekly feedback & improvements in class and at <u>home</u> (Improvements graded)
A2 take-home summative assessment task (final edited essay) (product) <u>Significant</u> contribution to grades.

Present (with ChatGPT)

Critical thinking & writing skills
Ethical use of AI technologies .
Research – Lecture, class discussion & debate. Library visit, 5 compulsory sources - Group concept map
Actual writing mostly done in class (not graded)
Weekly feedback, Reflections & improvements mostly in class (Reflections & effort graded)
Take-home assessment task (final edited essay (product) Small contribution to grades
A2 summative assessment opportunity used as an ass AS learning opportunity.