



## KERNGENEESKUNDE / NUCLEAR MEDICINE TYGERBERG HOSPITAAL / TYGERBERG HOSPITAL

Tel: 021 938 4265 (results) 021 938 4268 (bookings) Fax: (021) 938 4694  
www.sun.ac.za/nuclear



### IMIBI UVAVANYO LWENTLIZIYO Ulwazi olunokunceda Izigulane

Le ncwadana yenzelwe ukukunika ulwazi nokwenza ingqondo yakho izole malunga novavanyo okanye uxilongo oza kwenziwa lona ngoku. Siyathemba ukuba emva kokufunda le ncwadana, uyakuqonda ngcono ukuba lungantoni olu vavanyo.

#### LUYINTONI UVAVANYO LWENTLIZIYO OLUBIZWA NGEMIBI?

Ingakhangeleka ngathi inzima nakuba ilula! ITechnetium MIBI ilula, yinto nje esebenzisa iradio-active ethi yakuba ingene emithanjeni iye egazini ize ingene kwiiseli ezisezihlunwini zomzimba. Njengoko intliziyo inezihlunu/ inyama, iyangena nakuyo le technetium MIBI.

Ukungena kweMIBI kwizihlunu zentliziyo yakho kuya kubonisa kakuhle ukuba umthambo oyikhronari ulithumela kanjani igazi entliziyweni. Iradio-activity ingenisa imitha esuka kwitechnetium kwizihlunu/kwinyama yentliziyo yakho, oku kungabonwa xa usebenzisa uhlobo oluthile lekhamera ebizwa ngokuba yigamma. Oku kwenza sibone ukuba igazi eliya entliziyweni yakho lanele na okanye lincinci kunomlinganiselo ofunekayo – olu lwazi lubalulekile kugqirha wakho ukuze akwazi ukucwangcisa uvavanyo okanye unyango lwakho kwixesha elizayo.

#### IRADIYESHINI

Akukho mfuneko yokuba uxhalabe bubungakanani beradiyeshini oza kuyifumana. Sisebenzisa nje amathamo amancinci eradio-activity ngoko ke akuyi kufumana iradiyeshini eninzi ngaphezu kwaleyo unokuyifumana xa usenziwa vavanyo ngeX-Reyi.

#### INGABA OLU VAVANYO LUQUKA NTONI?

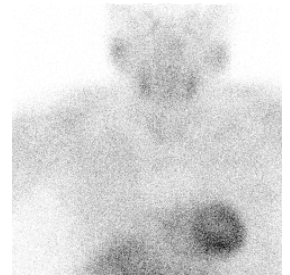
Olu vavanyo lunamanqanaba amabini:

- Uvavanyo loxinzelelo (uvavanyo lwesitresi);
- nolwe phasivi (ukuba kuyimfuneko)

- Uvavanyo lwesitresi

Kweli nqanaba lovavanyo kufuneka konyuswe iqondo lokufunwa kwegazi yintliziyo, eli gazi ligqitha kwizihlunu. Uxinzelelo entliziyweni lunokwenziwa kusetyenziswa enye yezi zinto zilandelayo: ukuzilolonga kumatshini oyithredi mili, okanye usebenzise enye yezi nto zimbini i(Persantin® okanye iDobutamine).

Phambi kovavanyo kuza kubakho uqhagamshelwano olwenziwa ngee-elektrodi phakathi kwakho nemonitha yeECG. Ezi elektrodi zincanyathiselwa esifubeni. Oku kujonga isantya ebetha ngaso intliziyo ne-ECG xa kwenziwa uvavanyo lwesitresi. Ufakwa idriphu emithanjeni njengeyona ndlela ilula ekunokwenziwa ngayo iMIBI.



Olu vavanyo ludla ngokwenziwa kwithredi mili. Mhlawumbi sele wakhe wayisebenzisa ithredi mili xa usenziwa uvavanyo lwesitresi. Ukuba akunjalo, siza kunika ixesha elaneleyo lokuba ude uwuqhele lo matshini phambi kokuba siqalise ngovavanyo. Sidla ngokuqhubeka ude ufikelele kwisantya obekelwe sona sokubetha kwentliziyo yakho, oku kwenziwa kujongwe neminyaka yobudala bakho neqondo lempilo yakho. Kubalulekile ukuba uzame ukufikelela kumlinganiselo wesantya owubekelweyo. Asizi kukunyanzela ngaphezu kokuba unako ukwenza, kodwa nceda usilumkise xa udinwe kangangokuba ungakwazi ukuqhubeka nokuzilolonga okanye ukuba uva kubuhlungu esifubeni.

Ukuba awukwazi kuzilolonga (umzekelo: ngenxa yengxaki onayo emilenzeni), siya kufaka inaliti enePersantin® okanye iDobutamine emithanjeni yakho. Le naliti inala mayeza yenza kuvuleke imithanjana yegazi – le ibiza kuvulwa kukuzilolonga okanye kukwenza umthambo. IPersantin® ithatha imizuzu engaphezu kwe-4 ukuya-5, ngeli xesha iDobutamine ithatha imizuzu eli-12. Emva kwexesha lokulinda siya kufaka iMIBI size sikucele uhamba-hambe imizuzwana embalwa, ukuze siqinisekise ukungena ngokwaneleyo kweMIBI entliziweni yakho.

IMIBI ifakwa kumzuzu omnye phambi kokuyekiswa kwakho ukuzilolonga kwithredi mili okanye phambi kokufumana inaliti enePersantin® okanye iDobutamine. Ngokweenjongo zovavanyo lwesitresi kubalulekile ukuba uqhubeka nokuzilolonga kangangomzuzu omnye emva kokufumana inaliti eneMIBI ukuze unyuse iqondo lokungena kwayo kwizihlunu okanye kwinyama yentliziyo. Uza kunikwa itshokoletshi encinci emva kokuhlatywa ngenaliti. Ngenxa yokuba isibindi siyikhuphela kwinyongo enye iMIBI, itshokoletshi iza kwenza isingxobo senyongo sicutheke okanye sishwabane kancinci ukwenzela ukuba ibe ncinci iMIBI eshiyekayo. Oku kuya kwenza ukuba sibone kakuhle ngekhamera okwenzekayo ngaphakathi entliziweni.

Uza kulinda ke ngoku imizuzu engama-15 ukuya kwengama-30 ukuba iMIBI ijongane nokusebenza entliziweni. Ngeli xesha ungahlamba ukuba kuyimfuneko, usenako nokutya. Igama khamera iza kusetyenziswa ukufota yonke into eyenzekayo entliziweni yakho. Xa ithatha le mifanekiso, siza kucela ukuba ungqengqele ebhedi elungiselelwe oku, ize iingalo uzolule zibe phezu kwentloko yakho. Uya kucelwa ukuba ungashukumi tu ukwenzela ukuba ifoteke kakuhle yonke into esentliziweni.

#### b) Uvavanyo lwephasivi

Xa kusenziwa uvavanyo lwephasivi siya kuqala sijonge isantya sokubetha kwentliziyo size sikuhlabe inaliti eneMIBI. Awuzukuphinda ufumane iPersantin® okanye iDobutamine. Emva kokuhlatywa kwakho inaliti uza kulinda kangangemizuzu engama-30 ukuya-kwengama45 ukulungiselela ukuba iMIBI ingene ngokwaneleyo entliziweni, emva koku imifanekiso yento eyenzeka entliziweni efana nanjengangokuya bekusenziwa uvavanyo lwesitresi iza kufotwa kwakhona.

Iziphumo zovavanyo obelusenziwa kuwe ziya kuthunyelelwa ugqirha wakho uze wena uzifumane kuye. Ugqirha wakho unako ukusifowunela xa efuna iziphumo zovavanyo lwakho.

## **OMAKWENZIWE NEMAKUNGENZIWA**

1. Nceda ungatyi kakhulu kusasa phambi kovavanyo oza kulenza, kuba ukutya kakhulu kwakwenza ukuba kube nzima xa kufuneka uzilolonge. Kucetyiswa ukuba ukutya okutyayo kwisidlo sakho sakusasa ibe sisidudu okanye isiriyeli nesiselo seziqhamo (ijusi).
2. Nceda ungaphungi iti okanye ikofu, ungaseli isiselo esinjengeCoke, ungaseli mayeza ozithengele wona anjengee(Grandpa®, Compral®, iyeza lokukhohlela) kangangeeyure ezingama-24 phambi kovavanyo/uxilongo. Ezi zinto ziya kwenza ukuba ingasebenzi kakuhle iPersantin®, loo nto yenze ukuba uvavanyo oluza kwenziwa lungazikhuphi kakuhle iziphumo njengoko kulindelekile.
3. Yiza neempahla eziza kwenza ukuba uwenze kakuhle umthambo xa uzilolonga, ungalibali ukuza netawuli yakho oza kuzosula ngayo. Izinto zokuhlamba nesepha ziyafumaneka apha, ungazihluphi ngokuza nezakho.
4. Ukulungiselela uvavanyo lwesitresi neDobutamine kwakufuneka uyeke ukusela amayeza akho esiqhelo kangangeentsuku ezintathu phambi kokwenza uvavanyo, umzekelo: amayeza okuthomalalisa anjenge(Inderal®, Tenormin®, Cave-dilol®, njalo njaloetc.). Ukuba akuqinisekanga okanye uyathandabuza, nceda usifowunele kwangethuba okanye ubonane nogqirha wakho.
5. Asinakuthanda ukuba wenze imithambo okanye uzilolonge xa unomkhuhlane okanye ubunawo kwiiveki ezintathu phambi kokuba uze kuvavanyo. Oku kukwanjalo nakwisiphi na isigulo esesulelyayo. Ukuba ukule meko nceda usazise kwangethuba ukuze sikwazi ukuhlelisa umhla wakho wokubonanan nathi.
6. Ixabiso leMIBI liphezulu kakhulu kwaye l-odelwa wena wedwa, kubalulekile ke ngoko ukuba ugcine umhla obekelwe bucala wokubonana nathi. Ukuba uneengxaki ngoku okanye unemibuzo onayo nceda unxibelelane nathi kwangethuba.
7. Idinga lakho lenzelwe umhla nexesha elithile. Fika kwangethuba. Ukuba ufike emva kwexesha uza kwenza lulibaziseke uvavanyo lwazo zonke izigulane ezimelwe kukuvavanywa emva kwakho ngalemini.

## **SIFUMANE**

Ukuba unemibuzo nceda ubuze ngaphandle kokuthandabuza.

### **FOWUNELA LE NOMBOLE:**

Tel: (021) 938 4265 / 938-4268

Fax: (021) 938 4694

E-mail: [TBH.NucMed@westerncape.gov.za](mailto:TBH.NucMed@westerncape.gov.za) / [nucmed@sun.ac.za](mailto:nucmed@sun.ac.za)

Web address: [www.sun.ac.za/nuclear](http://www.sun.ac.za/nuclear)