



**Western Cape
Government**

Health

TRACKING THE COVID19 EPIDEMIC

Prof H Mahomed
Dr M Paleker

Challenges with routine data and monitoring

22 May 2020

Global situation

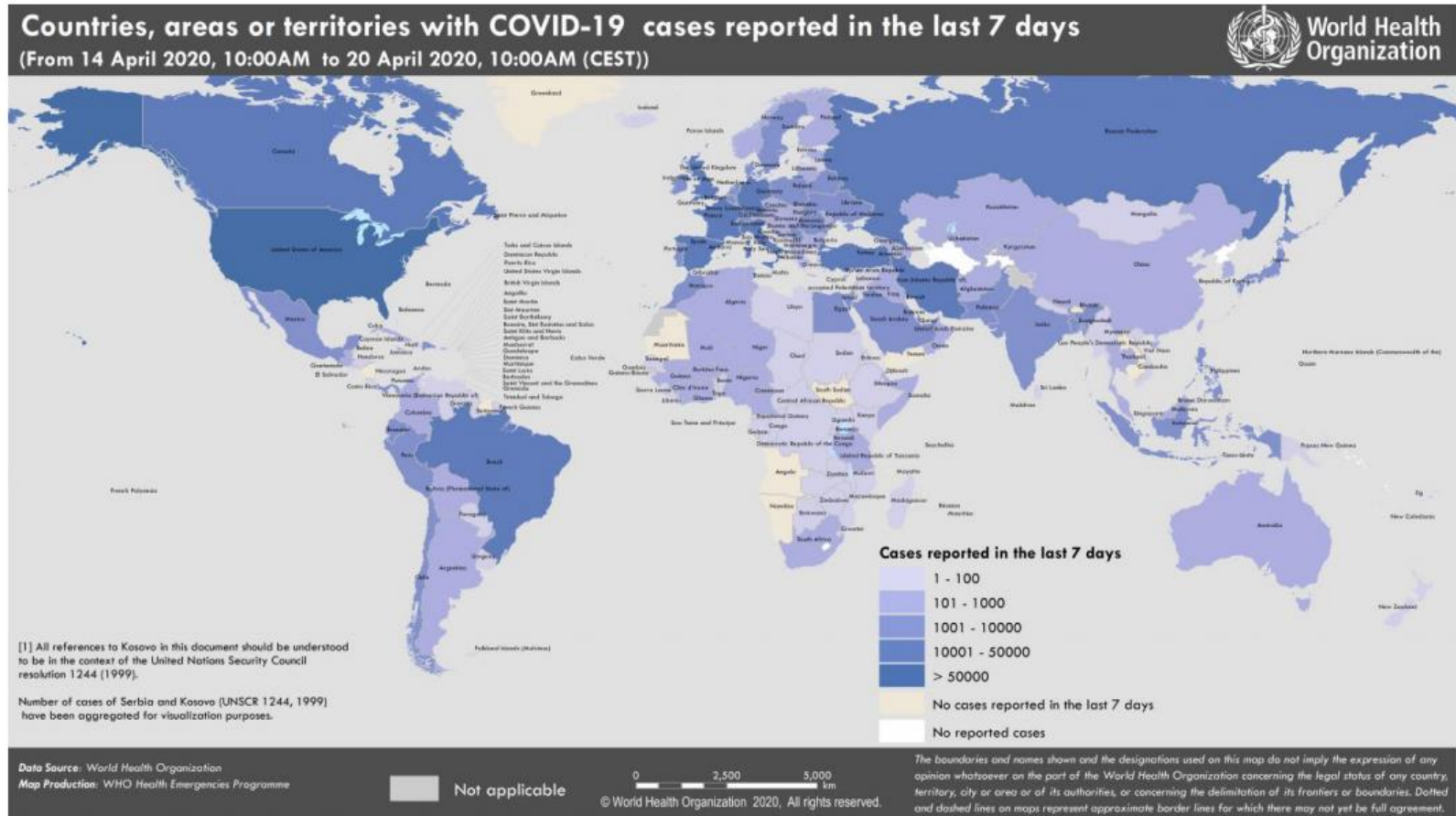
Situation in numbers (by WHO Region) as at 21 May 2020

Total (new cases in last 24 hours)

Globally	4 789 205 cases (57 804)	318 789 deaths (2 621)
Africa	65 956 cases (2 435)	1 846 deaths (50)
Americas	2 105 670 cases (22 782)	125 843 deaths (1 176)
Eastern Mediterranean	361 902 cases (5 153)	10 303 deaths (154)
Europe	1 928 799 cases (19 207)	169 033 deaths (1 035)
South-East Asia	156 211 cases (7 450)	4 971 deaths (191)
Western Pacific	169 955 cases (777)	6 780 deaths (15)

Global situation

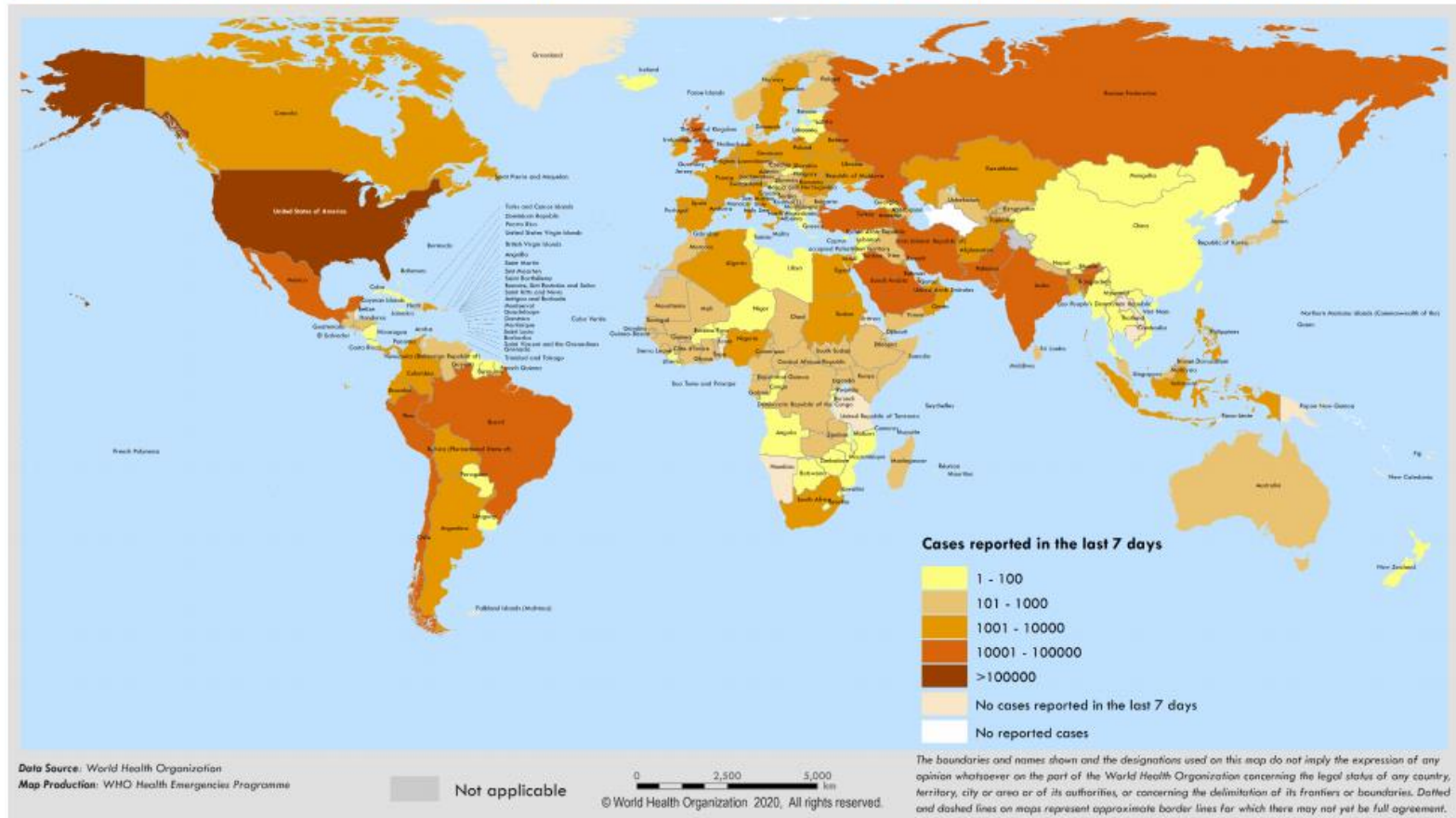
Figure 1. Countries, territories or areas with reported confirmed cases of COVID-19, 20 April 2020



Global situation

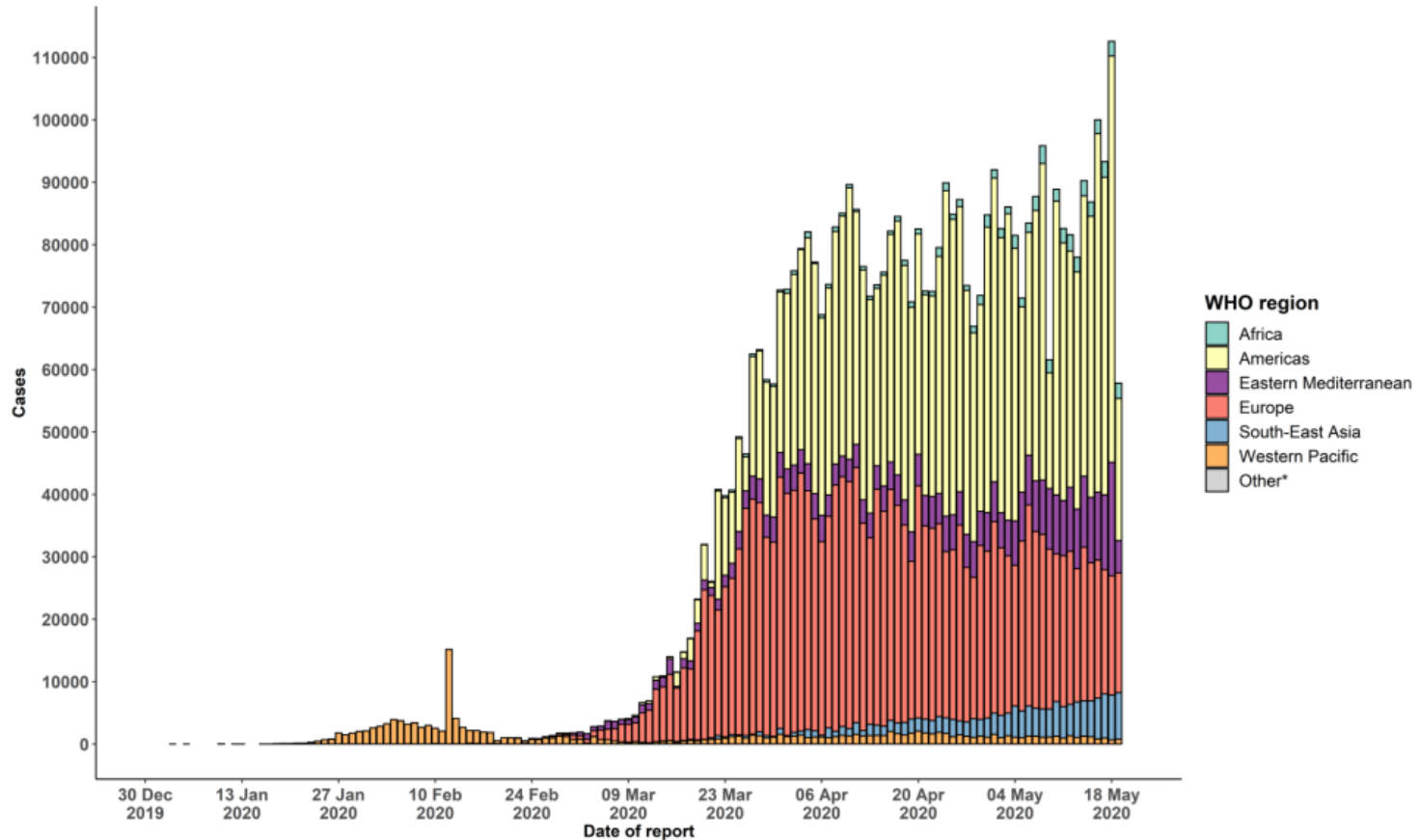
Surveillance

Figure 1. Number of confirmed COVID-19 cases reported in the last seven days by country, territory or area, 14 May to 20 May**



Global situation

Figure 2. Number of confirmed COVID-19 cases, by date of report and WHO region, 30 December 2019 through 20 May 2020**



Uses of indicators

- **Snapshot of the actual current situation**
 - Removed from any emotion or rhetoric
- **Shows where and how to focus strategies**
 - Testing
 - Quarantine/Isolation
 - Hospitals
 - Health care workers
 - Vulnerable groups
 - Etc.
- **Inform policy and decision-making**

It is important to have a critical mindset when looking at the data

Measuring COVID-19

Indicators used:

- Number of tests
- Reported number of cases
- Admissions to hospital
- Deaths
- Recoveries

Measuring COVID-19

Indicators used:

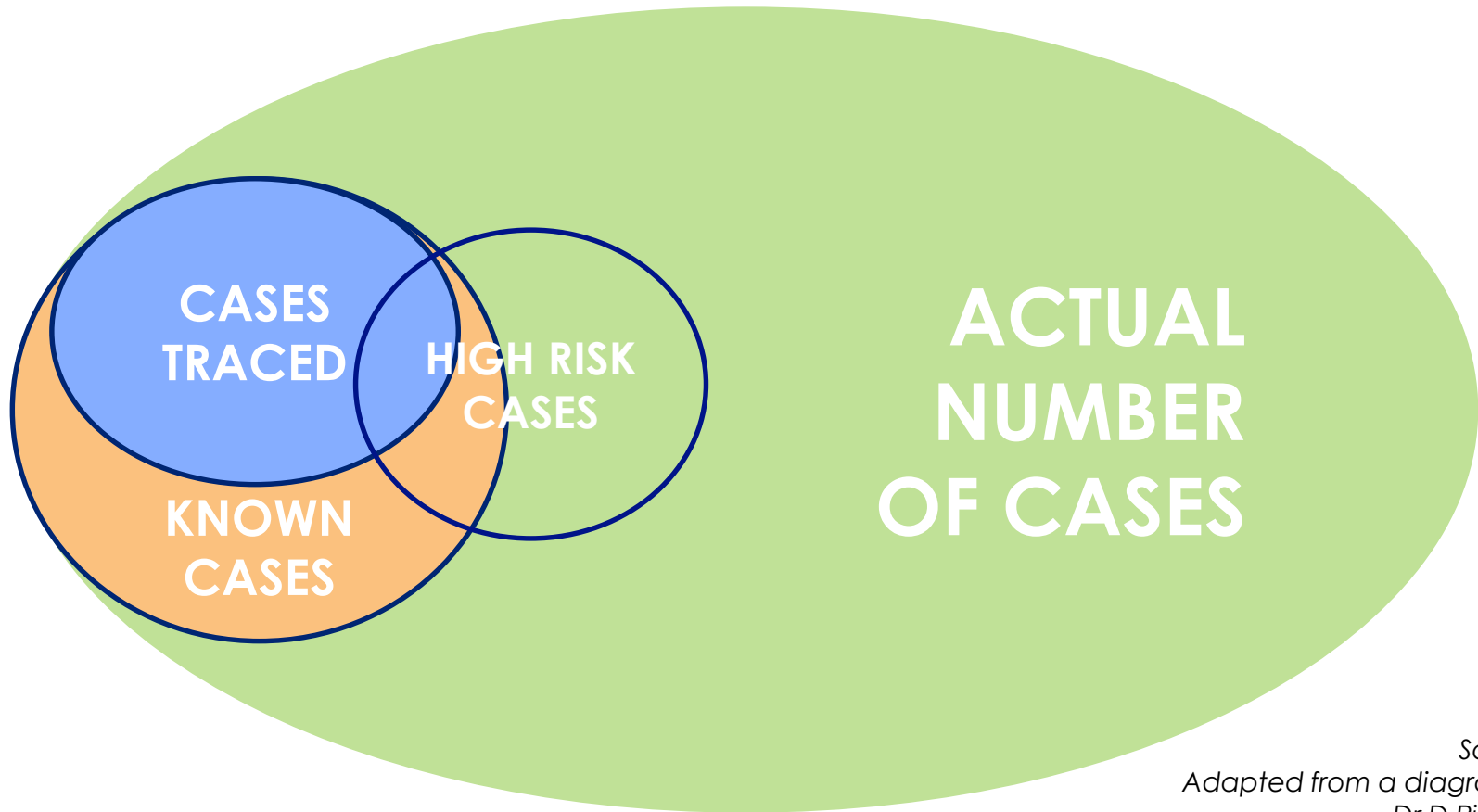
- **Number of tests**
- Reported number of cases
- Admissions to hospital
- Deaths
- Recoveries

Measuring COVID-19

Indicators used:

- Number of tests
- **Reported number of cases**
- Admissions to hospital
- Deaths
- Recoveries

The current situation



Source:
Adapted from a diagram by
Dr D Pienaar

Measuring COVID-19

Indicators used:

- Number of tests
- Reported number of cases
- **Admissions to hospital**
- Deaths
- Recoveries

Measuring COVID-19

Indicators used:

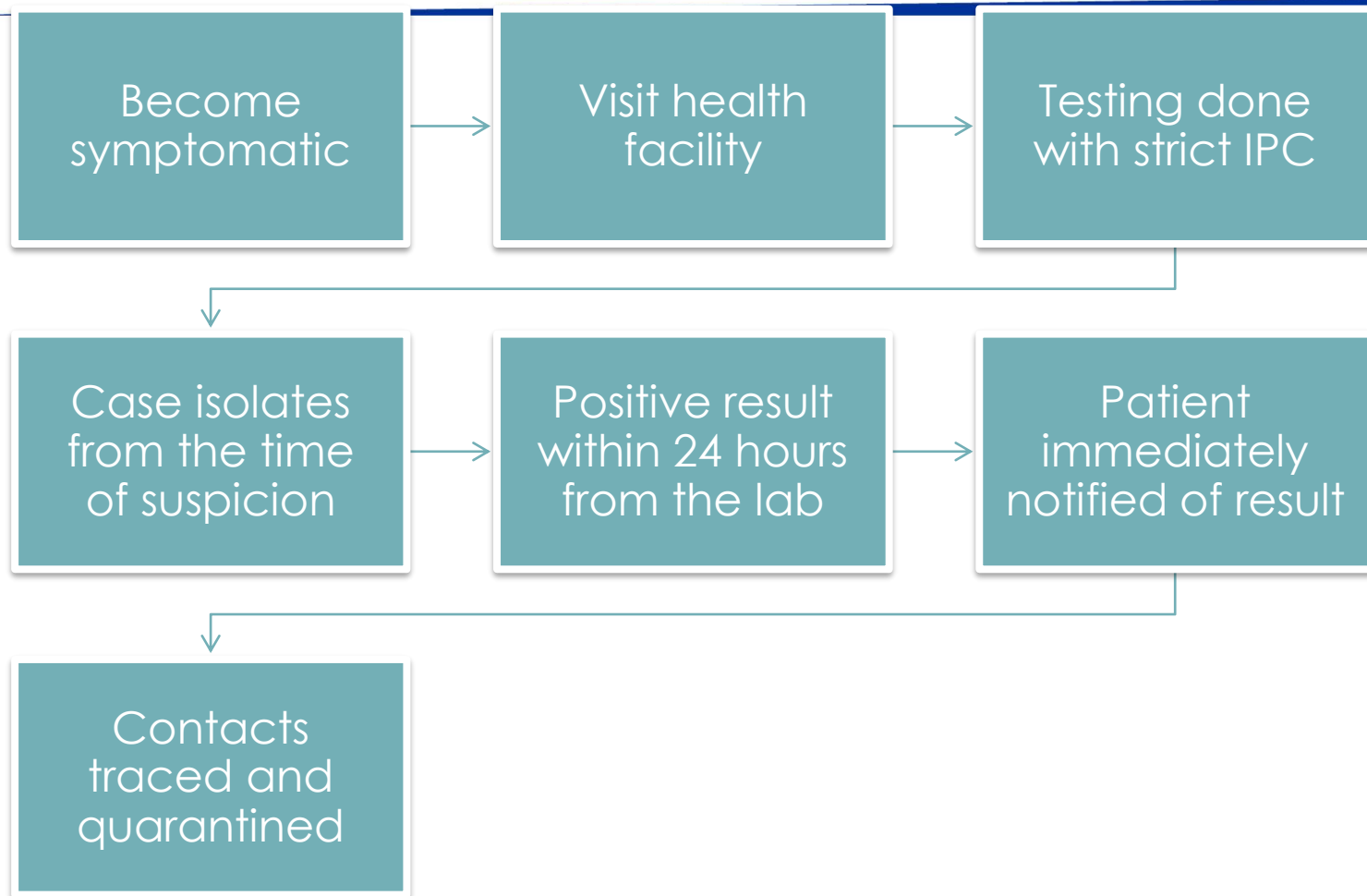
- Number of tests
- Reported number of cases
- Admissions to hospital
- **Deaths**
- Recoveries

Measuring COVID-19

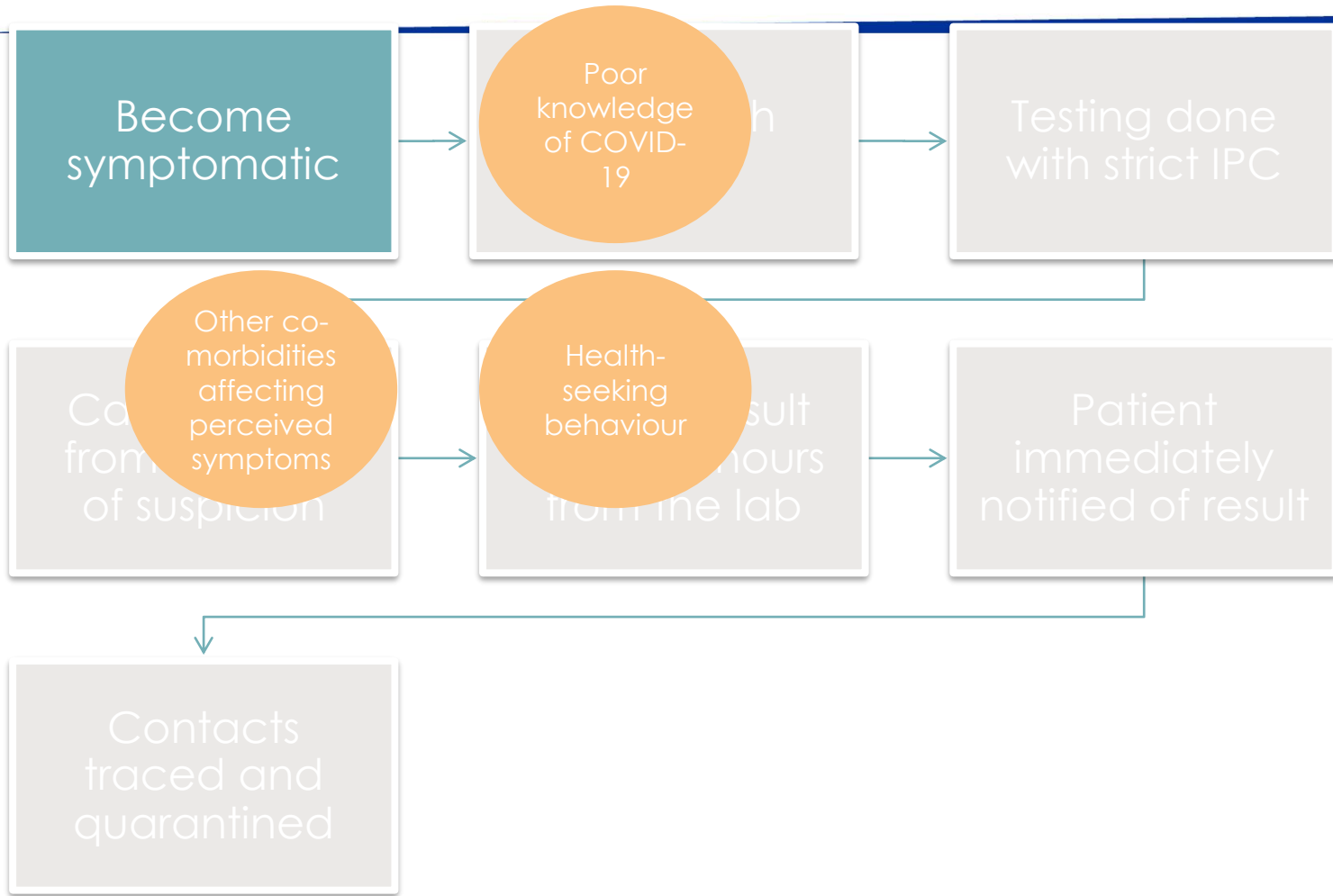
Indicators used:

- Number of tests
- Reported number of cases
- Admissions to hospital
- Deaths
- **Recoveries**

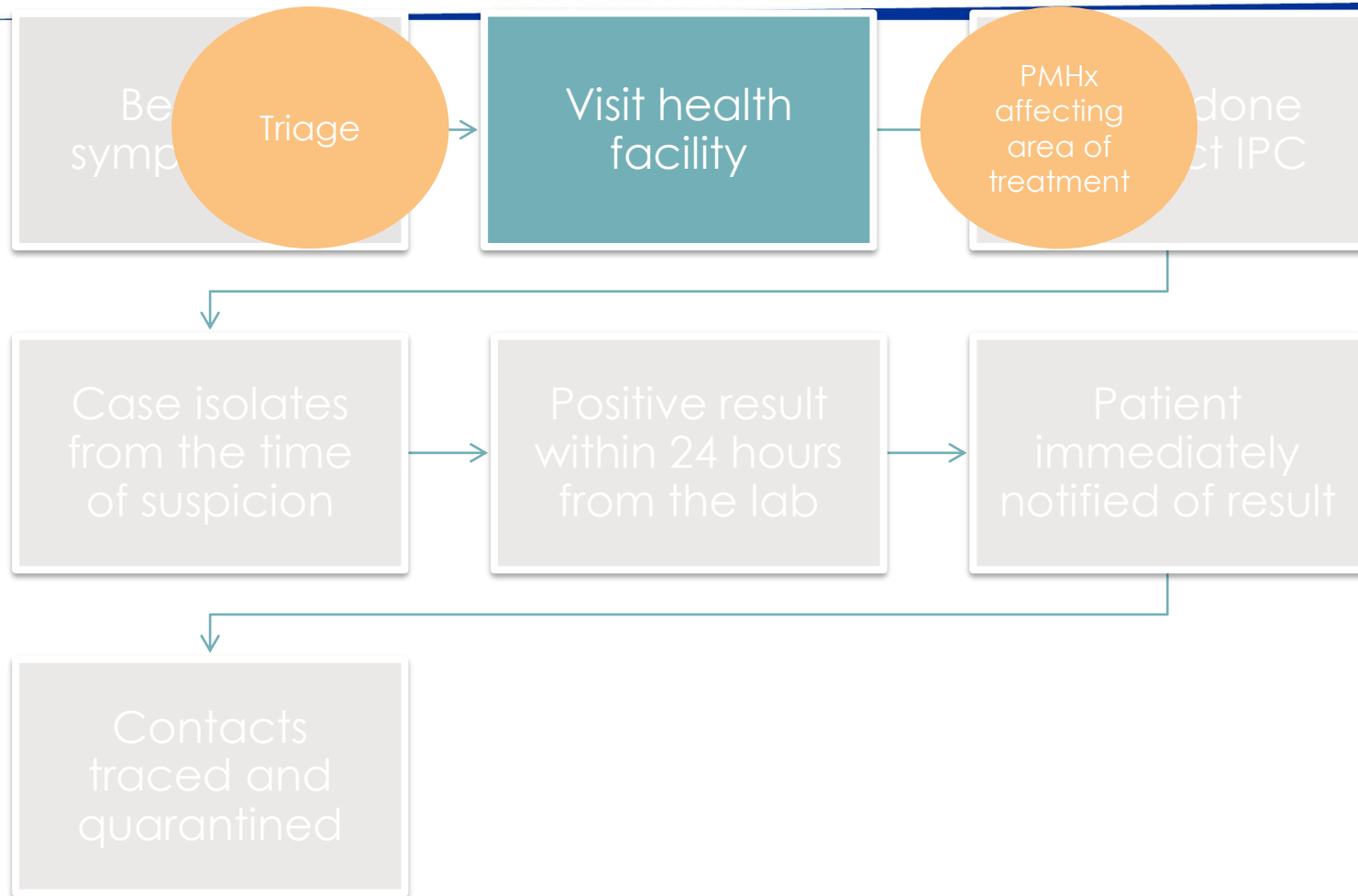
The ideal patient and data collection



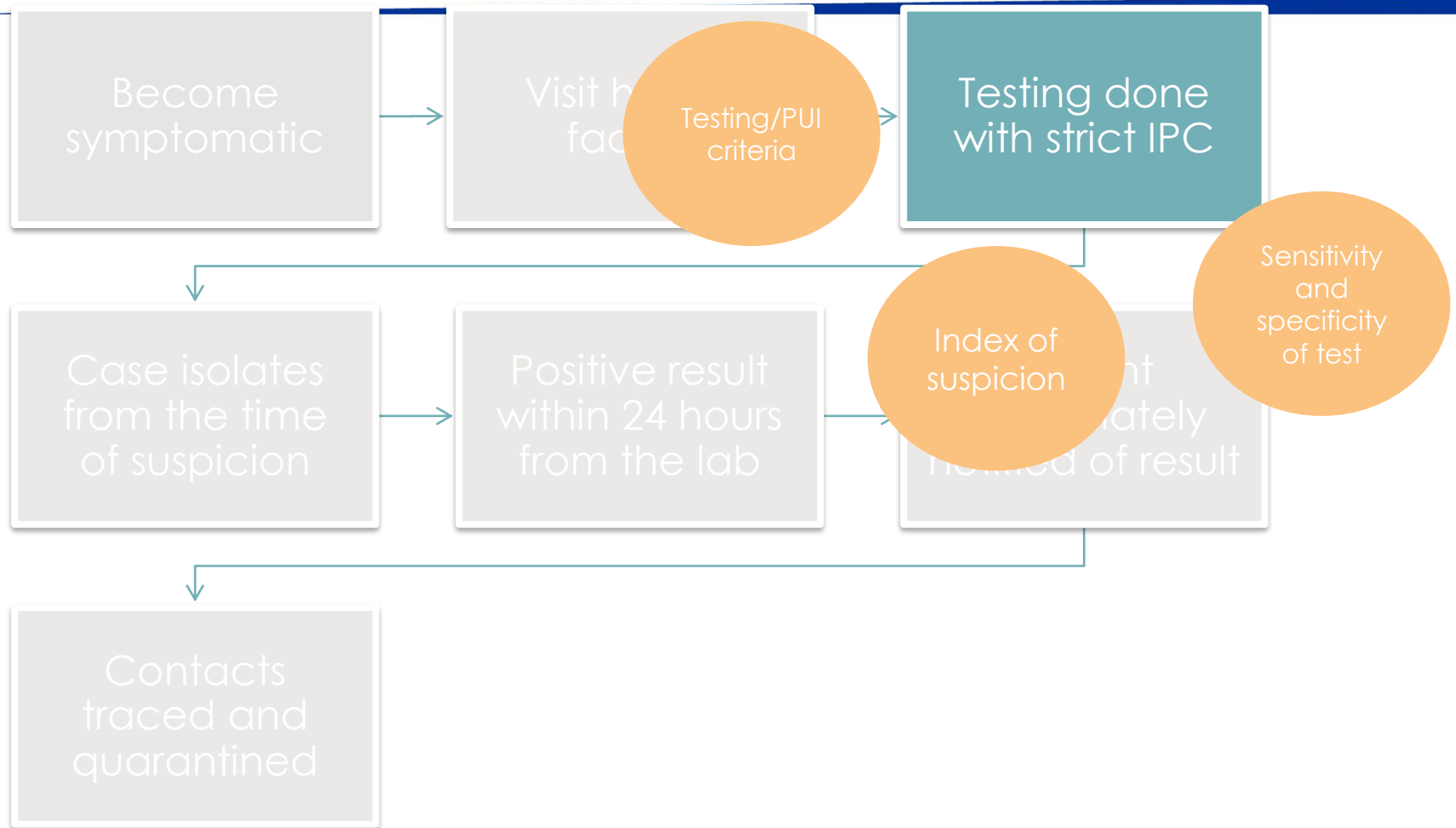
Why reported cases could be inaccurate



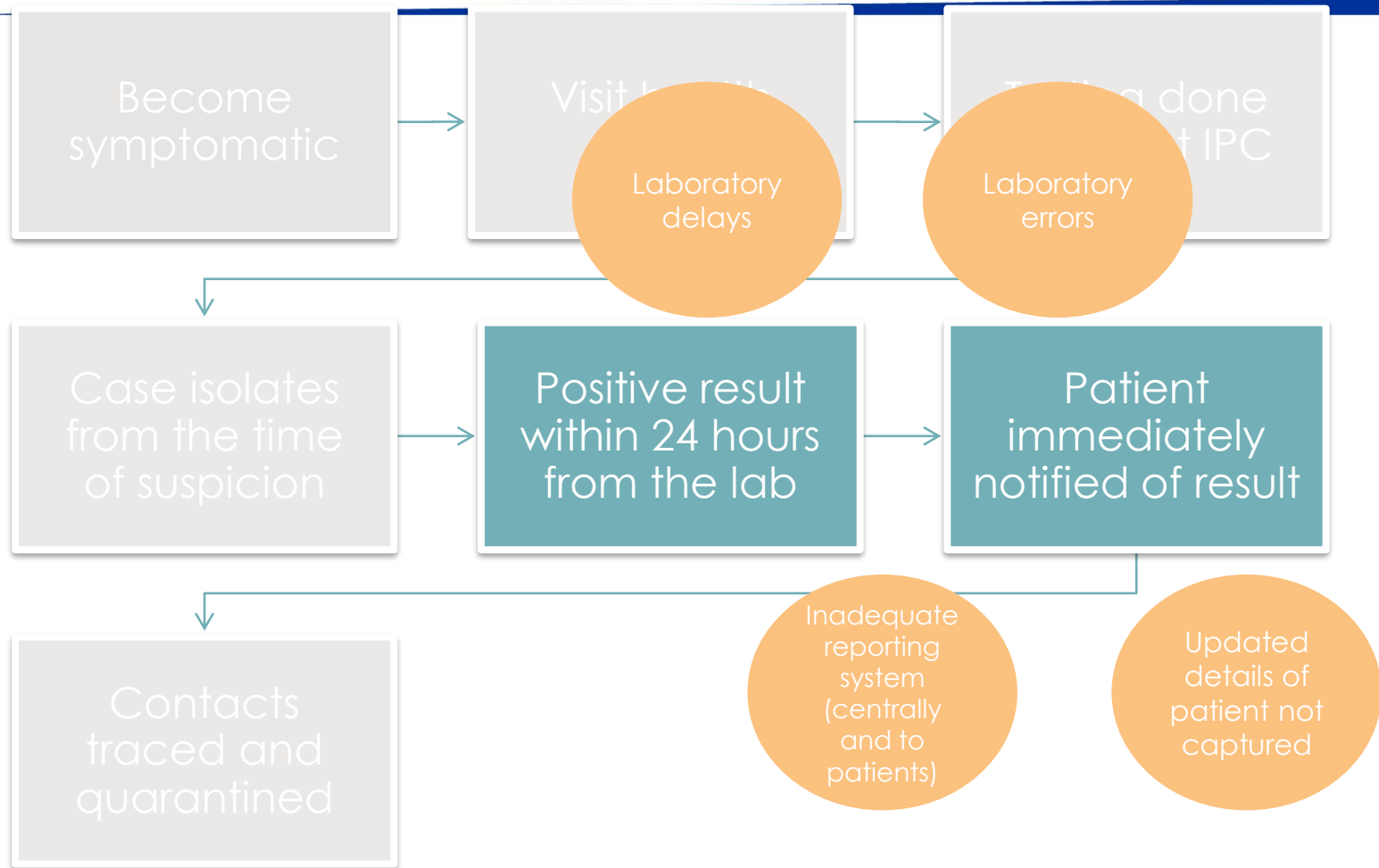
Why reported cases could be inaccurate



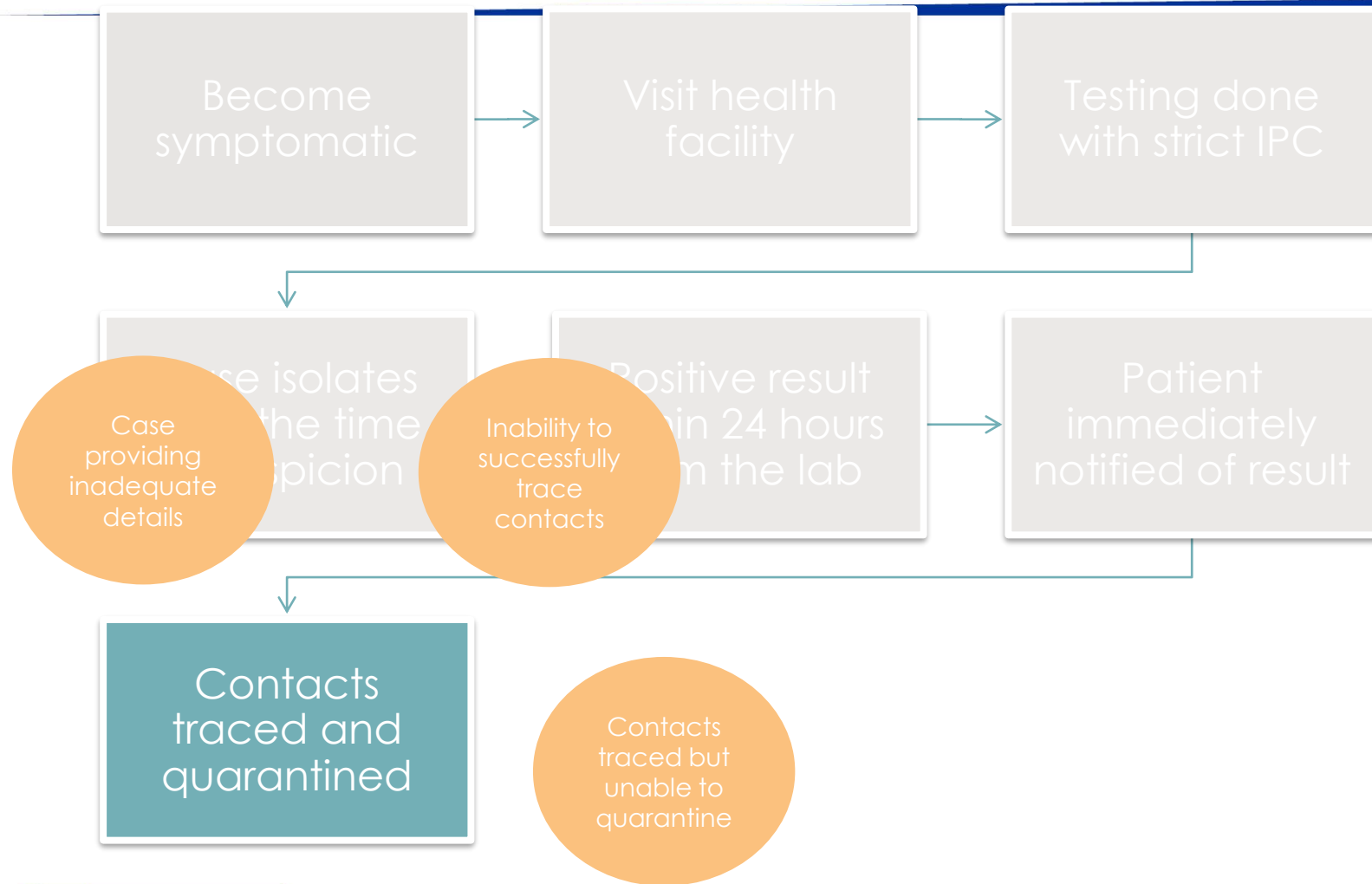
Why reported cases could be inaccurate



Why reported cases could be inaccurate



Why reported cases could be inaccurate



Surveillance

- Strength of surveillance
- Active surveillance
 - Looking for cases
 - Asymptomatic and recovered cases will be picked up
- Passive surveillance
 - Notification of cases without actively finding them
 - Incomplete reporting

Summary

- Combinations of types of surveillance used in tracking Covid-19
- Types of surveillance will affect the indicators used in reporting
- Indicators need to be used appropriately depending on data source and availability

It is important to have a critical mindset when looking at the data

Thank you