

Postgraduate Programmes Information Guide

**MPhil in Health
Professions Education**

**PhD in Health
Professions Education**

MPhil in Health Professions Education

(Structured programme)

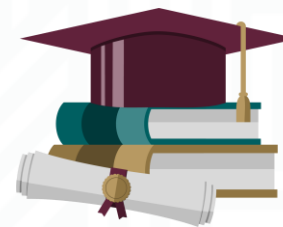
This programme aims to:

- **Promote excellence** with respect to education, research and community interaction in the field of health professions education on the African continent;
- **Facilitate research and academic reflection** in order to make a scholarly contribution to the body of knowledge in the field of health professions education;
- **Ensure a rich learning environment**, fostered through multidisciplinary and international perspectives; and
- **Develop health professions education leaders** who can contribute to the advancement of evidence-based practice in higher education in health sciences in the interest of enhancing the quality of health care in Africa.

Admission requirements

To be admitted to the MPhil in HPE, you need to have one of the following qualifications:

- a four-year (or longer) bachelor's degree in Health Sciences (NQF level 8) and currently actively involved in teaching at a Health Sciences higher education institution, **or**
- a three-year degree or diploma in Education or Social Sciences and a Postgraduate Diploma in Education, Higher Education or Health Sciences Education (NQF level 8) or an honours degree in Education or Social Sciences and currently actively involved in teaching at a Health Sciences higher education institution.



Learning outcomes for the programme

On completion of the MPhil in HPE you will be able to understand, critically evaluate and apply:

- Contemporary and appropriate educational approaches in a health professions teaching and learning context;
- Principles of professional practice, with specific reference to ethics, reflection and social responsiveness, in a health professions teaching and learning context;
- Findings derived from international and, in particular, African research into health professions education within the context of diversity and varying levels of resources.

Assessment

The course-based approach consists of a series of modules. All modules are subject to assessment. You will be required to complete assignments in which you will apply theory to your own work setting and practice. In order to pass, a minimum mark of 50% has to be achieved in each module. You are also required to submit a satisfactory research assignment demonstrating your ability to conduct an independent scientific investigation and to interpret the results thereof. The research assignment will be assessed according to Stellenbosch University guidelines. In order to pass the research assignment, a minimum of 50% has to be achieved.

Programme structure

First Year		Second Year	
Curriculum Development and Analysis in HPE	15	Staff Development in HPE OR Clinical Skills Development	15
Teaching and Learning in HPE	25		
Assessment in HPE	15	Leadership in HPE	15
Research Methodology in HPE	20	Research Assignment	60
Longitudinal Learning Components			
Academic Writing		Integrated Portfolio for HPE	15

Programme format: Hybrid

A compulsory residential period of one week, usually in January/February, introduces each year of study.

The remainder of the programme is facilitated online via the SU learning management system (FMHSLearn), using structured study materials, written assignments and feedback.



MPhil in Health Professions Education
(Thesis option)

The programme can also be completed by following a full thesis option. Admission is subject to approval of the envisaged study by the programme committee. You are required to submit proof of experience in an educational environment. If you are unable to supply proof of knowledge of and experience in educational or social sciences research, you will be required to complete the Research Methodology module (20 credits).

You are required to submit a research thesis demonstrating your ability to independently conduct a scientific investigation. This must be at a more comprehensive level than required for the research assignment in the structured programme. The research thesis will be assessed according to Stellenbosch University guidelines and a minimum of 50% has to be achieved in order to pass.

Recognition of Prior Learning (RPL)

In keeping with university guidelines, applications for RPL will be considered for those who can demonstrate having considerable experience in health professions education.

PhD in Health Professions Education

The Doctorate in Philosophy (Health Professions Education) (PhD in HPE) requires the submission of a full research dissertation that meets the requirements for doctoral studies as defined by SU guidelines.

Admission is subject to approval by the programme committee. You are required to submit proof of experience in an educational environment and proof of knowledge of and experience in educational or social sciences research.

Testimonials from former students:

"I think the MPhil has given me the confidence and empowered me with the knowledge, skills and competencies to actually go on and drive things at an institutional level."

"When I entered the programme I thought it was about improving myself, where I now really view myself as somebody who should be critical in improving education and teaching and learning at the University and particularly also in my programme."

For further enquiries, contact:
Dr Mariette Volschenk
m volschenk@sun.ac.za
+27 21 938 9447

SCAN THE QR CODE TO VISIT OUR WEBSITE