

MONITORING GUIDELINES

for *Bactrocera dorsalis*

Abbr.

Bactrocera dorsalis - BD

FruitFly Africa - FFA

Methyl Eugenol - ME

Production Unit Code - PUC

PLACEMENT

- In the orchard
- In the host tree
- 1,5 m above ground
- Place in shade
- Clear of leaves
- Additional trap in home garden

MONITORING

- Monitor all year
- Bi-weekly

REPLACE ATTRACTANT

- Every 6 – 8 weeks

RECORD KEEPING

Datasheet with the following details:

- Province and region
- Farm Name
- PUC
- Host/ cultivated crop
- Orchard number
- Date
- GPS coordinates
- Keep records

WHY MONITOR

- BD is a quarantine pest
- Monitoring data is required for special program registration
- Pro-active eradication/ control

HOW MANY TRAPS NEEDED

BD not present

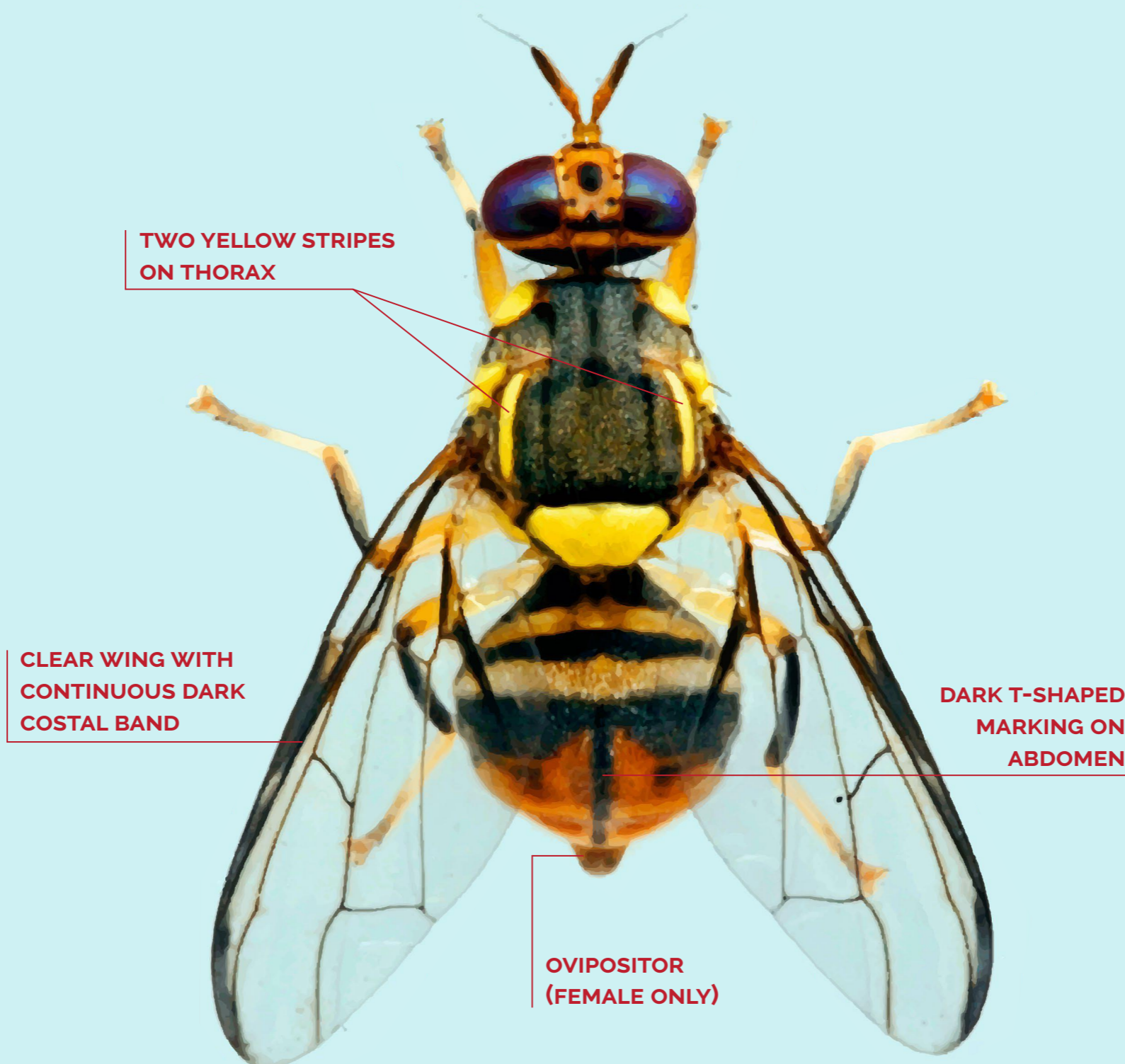
- 1/PUC
- 1/100 ha

BD present

- 1/PUC
- 1/25 ha

WHICH TRAP

- Bucket trap
- Lure: ME Dispenser
- Be cautious of cross contamination when handling ME.
- Insecticide: Dichlorvos strip
- Coat support wire with sticky ant barrier or Vaseline



NOTIFICATION

If in a BD free area:

- Notify FFA; Eloise du Plessis (eloise@fruitfly.co.za or 021 882 9541)
- Send specimen in vial to FFA