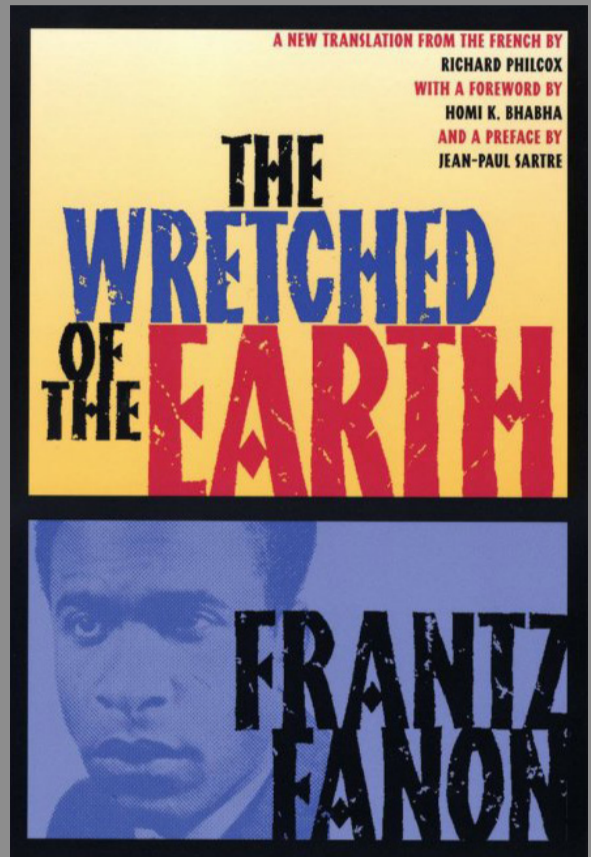


# HISTORICAL TRAUMA AND TRANSFORMATION INDEXING TRANSFORMATION



In what way, then,  
can the once colonized  
woman or man  
[and anyone else  
who earnestly joins this  
ethico-political project]  
be the figures  
of instruction  
for our global century?

Homi Bhabha, 2004



FRANTZ FANON (1925-1961)  
Cover of *The Wretched of the Earth*  
Forward by Homi Bhabha, Preface by Jean-Paul Sartre

A conversation with  
Prof Homi Bhabha on

## Engaged Scholarship and Ethical Citizenship

Based on a Reading  
of his Foreword to  
*The Wretched of the Earth*  
"Framing Fanon"

Moderator: Dr Buhle Zuma  
Chair: Dr Kim Wale

Date  
**Tuesday, 15 August 2017**

Time  
**12:15 - 14:00**

Venue  
**Seminar Room 1018  
Perold Building**  
on the Rooi Plein (Next to Neelsie)

**Light refreshments  
will be served**



UNIVERSITEIT  
STELLENBOSCH  
UNIVERSITY