

GRADUATE DESTINATION SURVEY 2019/2020

Carla Kroon, Centre for Business Intelligence, Information Governance, 2020

Table of Content

1. Introduction	2
2. Demographic Summary	3
2.1. Qualification types.....	3
2.2. Language, gender and population group.....	3
2.3. Faculty	4
3. Analysis.....	5
3.1. Primary activity after graduation	5
3.2. Employment Rate	6
3.3. Work-related questions	7
3.4. Study-related questions	14
3.5. UGCS activities participation	15
3.6. Co-curricular activities participation.....	16
4. List of Figures	18
5. List of Tables	19
6. Annexure.....	20

1. Introduction

This Graduate Destination Survey 2019/2020 was conducted at the December 2019 and March 2020 graduations as a collaboration between the Division for Information Governance (Centre for Business Intelligence) and Centre for Student Counselling and Development (Unit for Graduand Career Services). This is the third round of the Graduate Destination Survey at Stellenbosch University (SU) since it has resumed in 2017/2018. Before 2017, a similar survey was last conducted in 2013. There was a need for the Unit for Graduand Career Services to collect information about the SU graduates and the world of work again.

Data Cleaning

Student numbers as identifiers were collected for the first time as part of the survey and allows for extended analysis related to demographic factors and other graduation information. In cases where student numbers were invalid, the correct student number was inferred or the entry was not included in the analysis. Where graduates completed the survey twice, the latest entry was used in the analysis. In total 2654 entries were used in the analysis.

Participation Rate

A full report on graduates for 2019 is available [here](#). Important information to take into account is the total number of graduates in 2019 (Table 1 below) for the university as a whole is 9120 (4488 undergraduates and 4632 postgraduates).

Table 1: Number of graduates in 2019

Graduation Month	2019		
	Undergraduates	Postgraduates	Total
December	3 177	2 665	5 842
March ¹	1 311	1 967	3 278
Grand Total	4 488	4 632	9 120

Using the above information, the overall participation rate in the survey is therefore 29.1%. It is 30.6% for undergraduates and 27.6% for postgraduates (see Table 2 below).

¹ Graduation opportunities of March reflects graduations associated with the previous academic year, e.g. students whom have graduated in March 2020 forms part of the 2019 graduates.

2. Demographic Summary

In this section a breakdown of the participant demographics will be provided before the analysis on the graduates and the world of work.

2.1. Qualification types

1280 postgraduates (PG) and 1347 undergraduate (UG) graduates completed the survey. Table 2 below provides a breakdown of the various qualification types of graduates. The table also provides a further breakdown of whether the survey was completed by participant's in March 2020 (1047 participant's) or December 2019 (1607 participant's).

Table 2: Qualification type and graduation ceremony

	March	December	Grand Total
Postgraduate	588	692	1280
Postgraduate Diploma/Certificate	148	204	352
Postgraduate Bachelors	12	9	21
Honours	83	256	339
Masters	284	165	449
Doctoral	61	58	119
Undergraduate	459	915	1374
Undergraduate Diploma/Certificate	16	29	45
Undergraduate Bachelors (General)	362	475	837
Undergraduate Bachelors (Professional)	81	411	492
Grand Total	1047	1607	2654

Furthermore, 3% of respondents were Extended Degree Programme (EDP) students, 13% were international students and 13% passed their degree cum laude.

2.2. Language, gender and population group

Figure 1 to Figure 3 below shows the language, gender and population group distribution of participants, respectively.

The majority of participants completed the survey in English (2066; 78%), while 588 participants completed the survey in Afrikaans (22%) as per Figure 1. More females (1551; 58%) than males (1103; 42%) completed the survey as per Figure 2. The majority of participants were white (1440; 54%) and 640 black African (24%), 475 coloured (18%), 81 Indian (3%), 3 Asian (0%) and 15 withheld (1%) participants completed the survey as per Figure 3.

Language

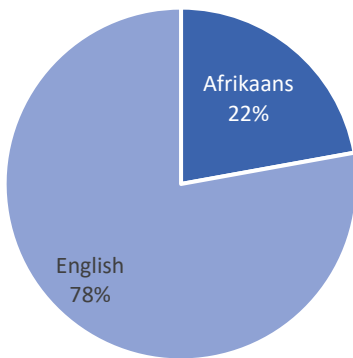


Figure 1: Language distribution

Gender

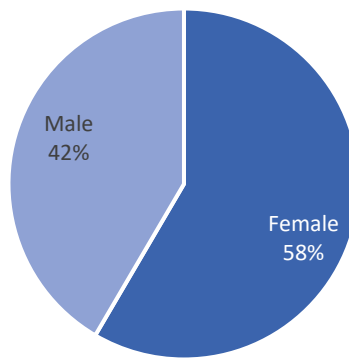


Figure 2: Gender distribution

Population Group

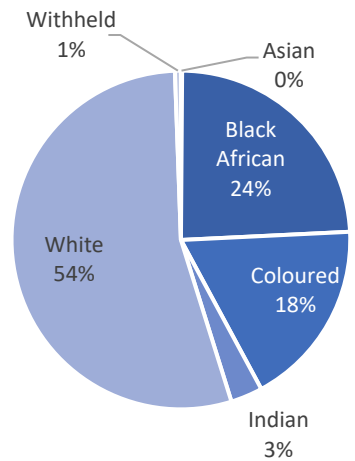


Figure 3: Population group distribution

2.3. Faculty

Table 3 below provides the faculty distribution of the respondents (also for postgraduates and undergraduates separately).

Table 3: Faculty distribution

	Postgraduate	Undergraduate	Grand Total
Agrisciences	53	91	144
Arts And Social Sciences	164	238	402
Econ and Management Sciences	514	434	948
Education	101	80	181
Engineering	82	191	273
Law	45	28	73
Medicine And Health Sciences	204	89	293
Military Science	9	18	27
Science	93	185	278
Theology	15	20	35
Grand Total	1280	1374	2654

3. Analysis

This section will provide information about the graduates and the world of work, further studies, participation in the services offered by the Unit for Graduated Career Services and co-curricular involvement in their time as a student.

3.1. Primary activity after graduation

The first question of the survey was aimed at obtaining the primary activity after graduation. Table 4 below provides the summary of postgraduate, undergraduate and overall graduate activity after graduation.

Table 4: Primary activity after graduation for PG and UG graduates

	Postgraduate		Undergraduate		Grand Total	
	N	%	N	%	N	%
Accepted full-time further study	130	10.2%	471	34.3%	601	22.6%
Accepted part-time/modular further studies	39	3.0%	35	2.5%	74	2.8%
Will be applying for further studies	106	8.3%	99	7.2%	205	7.7%
Subtotal studies	275	21.5%	605	44.0%	880	33.1%
Secured a job and will be entering the world of work	205	16.0%	155	11.3%	360	13.6%
Compulsory obligation	86	6.7%	134	9.8%	220	8.3%
Studied part-time staying on at my current employer	386	30.2%	45	3.3%	431	16.2%
Subtotal work in sector	677	52.9%	334	24.4%	1011	38.1%
Started own business while at university	25	2.0%	8	0.6%	33	1.2%
Will start own business	28	2.2%	155	11.3%	183	6.9%
Subtotal own business	53	4.2%	163	11.9%	216	8.1%
Not secured a job yet and will be job-hunting	227	17.7%	207	15.1%	434	16.4%
Travel	10	0.8%	27	2.0%	37	1.4%
Unsure	38	3.0%	38	2.8%	76	2.9%
Grand Total	1280	100.0%	1374	100.0%	2654	100.0%

Overall 30.3% of graduates will be pursuing full-time studies (22.6% of participants are already accepted and 7.7% would still apply at graduation) and 2.8% of graduates will be pursuing part-time studies.

By graduation, 13.6% of graduates have secured a new job above and beyond those that will pursue further studies (33.1%), stay on at their current employer (16.2%), have a job due to a compulsory bursary obligation/internship/community year (8.3%), travel (1.4%) or start/continue their own business (8.1%). Only 16.4% of graduates have indicated that they will be job-hunting and have not secured a job by graduation.

3.2. Employment Rate

Using the responses from the question relating to primary activity after graduation (Table 4), an employment rate is calculated in Table 5 below.

Table 5: Employment Rate

	Postgraduate		Undergraduate		Grand Total	
	N	%	N	%	N	%
Working (sector or own business)	730	76.3%	497	70.6%	1227	73.9%
Job-Hunting	227	23.7%	207	29.4%	434	26.1%
Grand Total	957	100.0%	704	100.0%	1661	100.0%

The employment rate is calculated using all the respondents indicating that they have secured a job (secured a job and will be entering the world of work, compulsory obligation, studied part-time staying on at my current employer, started own business while at university or will start own business) and those that are still job-hunting as the base. All respondents that have indicated they will pursue further studies, travel or are unsure of their plans were not included in the calculation.

The employment rate for postgraduates (76.3%) are higher than for undergraduates (70.6%) and the overall employment rate is 73.8% at the time of graduation.

3.3. Work-related questions

This section's questions were answered by all participants (1011) that indicated that they have secured a job and will work after graduation, secured a job as part of a compulsory internship/community year/bursary obligation or that will be staying on at their current employer. This excludes participants that indicated they will be starting their own business or already started their own business.

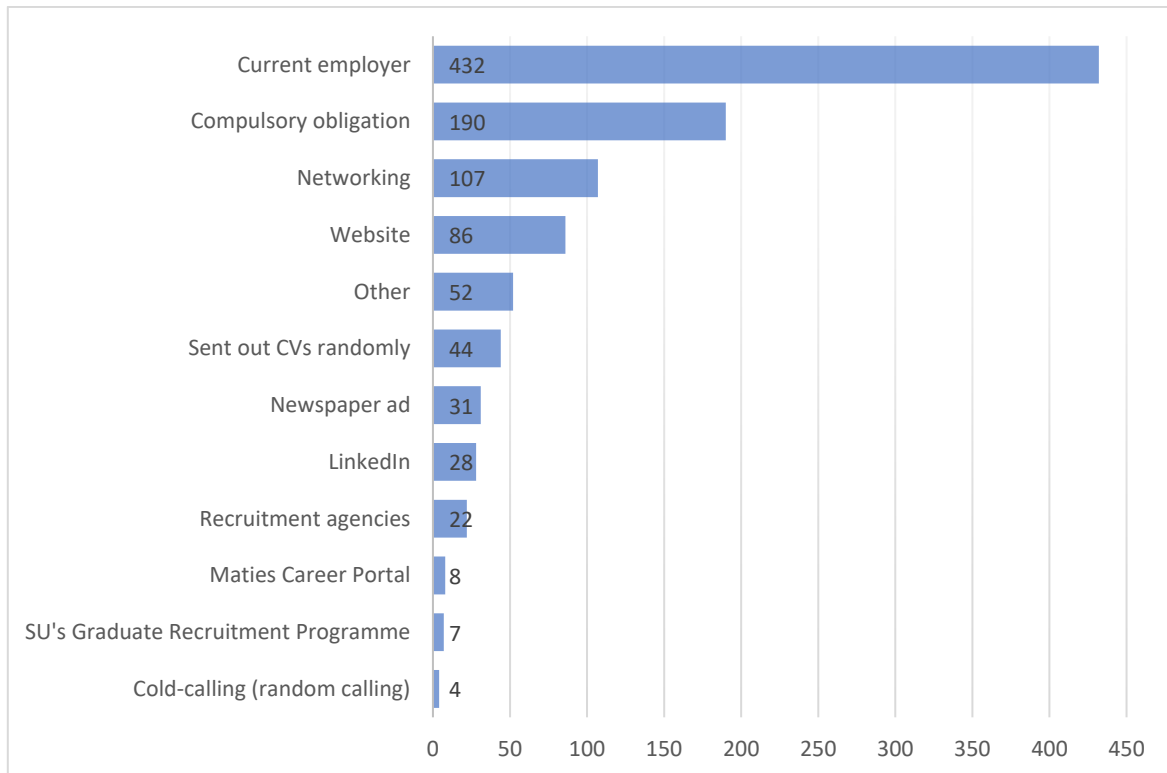


Figure 4: How did you apply for your job?

Figure 4 above indicates the participant's response to the question "How did you apply for your job?". The main reason was that participants will be staying on at their current employers. The second largest factor was that their job is part of compulsory internship/community year/bursary obligation. The third reason was networking. A further breakdown of this question is available in the annexure (Table 12).

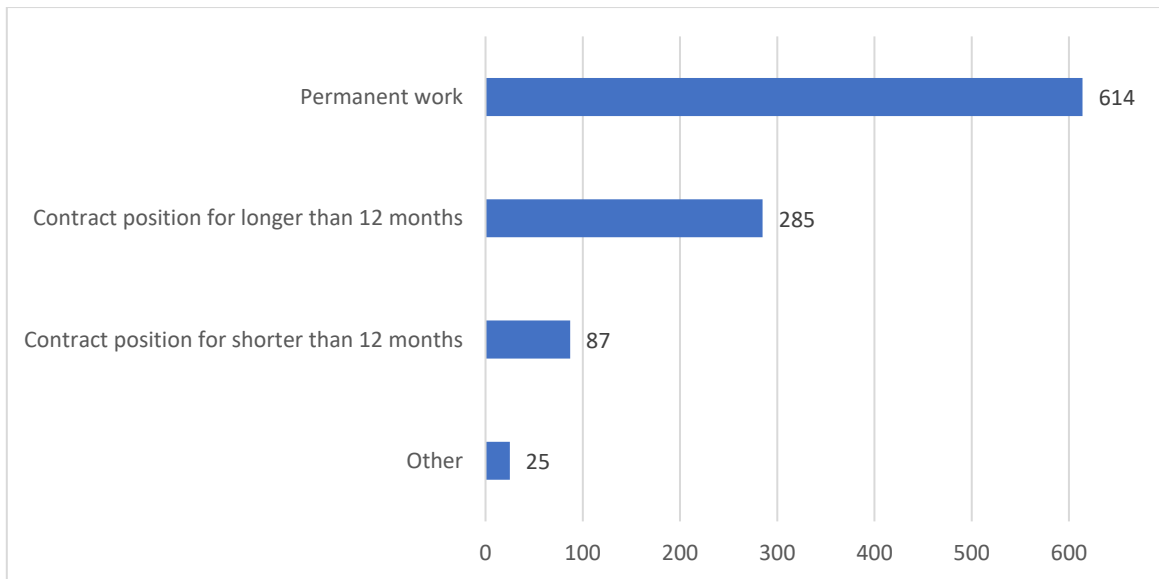
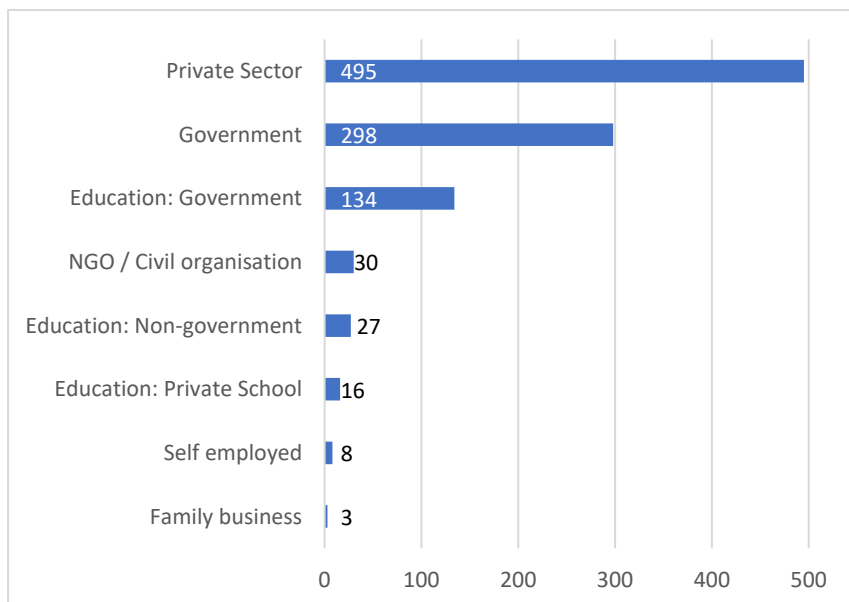


Figure 5: What is the nature of your employment?

Figure 5 above indicates the participant’s response to the question “What is the nature of your employment?”. Of the 1011 participants, 60.7% (614) of participants found permanent work, while 28.2% (285) will be working in a contract position for longer than 12 months. A more detailed breakdown of this question is available in the annexure (Table 13).



	Count	Percentage
Private Sector	495	49.0%
Government	298	29.5%
Education: Government	134	13.3%
NGO / Civil organisation	30	3.0%
Education: Non-government	27	2.7%
Education: Private School	16	1.6%
Self employed	8	0.8%
Family business	3	0.3%
Grand Total	1011	100.0%

Figure 6: In which sector will you be working?

Figure 6 above indicates the participant’s response to the question “In which sector will you be working?”. Of the 1011 participants, 49.0% (495) of participants will be working in the private sector, while 29.5% (296) will be working in government positions. Note that the education students had specific categories relevant to them in the above question.

Figure 7 and Figure 8 provides the detail of the location (country and province) where graduates will work. As per Figure 7, 86% of participants indicated they will work in South Africa, with 9% in other African countries and 5% indicating overseas. As per Figure 8, of the 867 participants that will be staying in South Africa, 68% (585) will be working in the Western Cape and the second largest portion (139; 16%) in Gauteng.

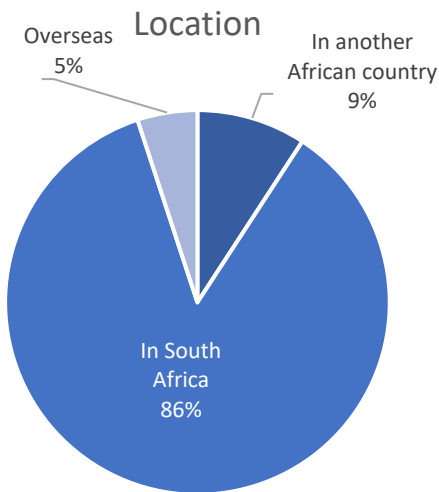


Figure 7: Where will you work?

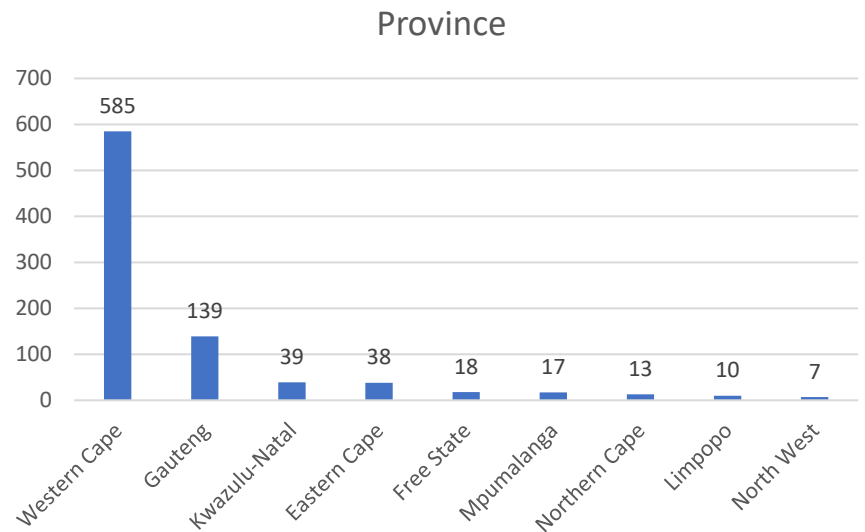


Figure 8: In which province will you work?

The graph below (Figure 9) indicates the responses to the question “In your opinion is the type of work related to your qualification?” per faculty. The work that participants will enter into is generally highly correlated to the qualification they receive. The faculties where the relationships are slightly lower than the rest are in the Faculty of Arts and Social Sciences and Military Sciences (take note of the small sample size for this faculty).

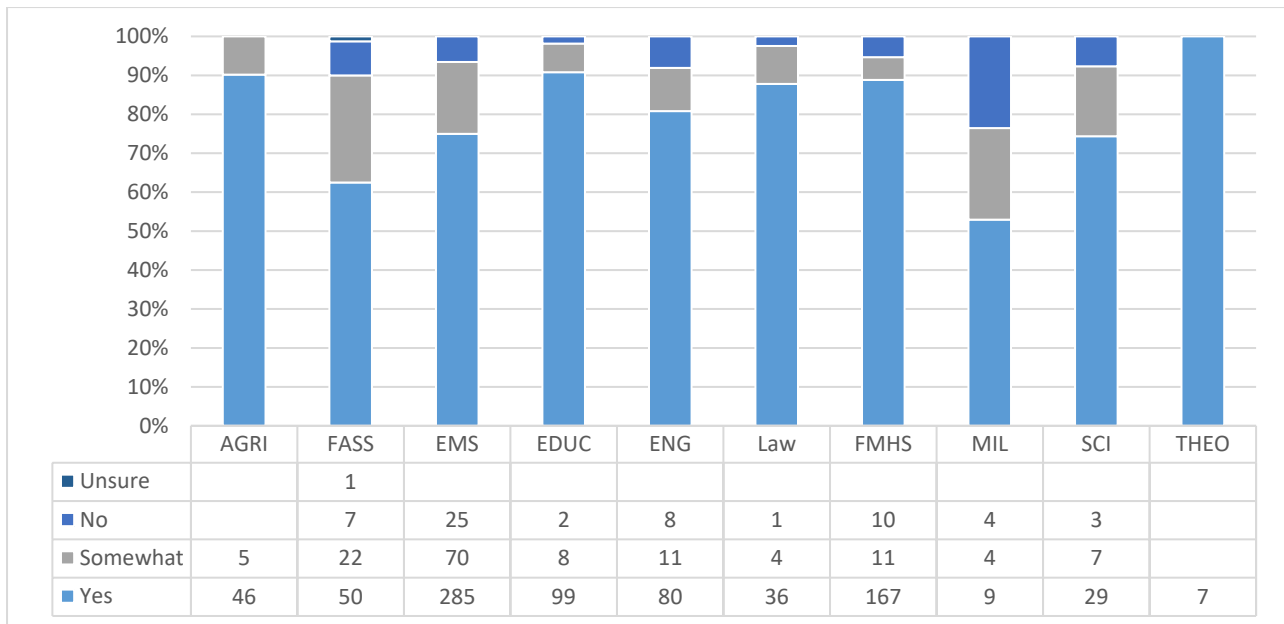


Figure 9: In your opinion is the type of work related to your qualification?

Table 6 below indicates the participant’s response to the question “How many organisations did you approach before you were offered a job?”. The table breaks down the results for undergraduate, postgraduate and total respondents.

Table 6: PG and UG breakdown: How many organisations did you approach before you were offered a job?

		Postgraduate	Undergraduate	Grand Total
1	N	104	126	230
2	N	55	28	83
3	N	28	30	58
4	N	13	9	22
5	N	4	7	11
More than 5	N	78	59	137
I am staying on at my current employer	N	395	75	470
Grand Total	N	677	334	1011
1	%	15.4%	37.7%	22.8%
2	%	8.1%	8.4%	8.2%
3	%	4.1%	9.0%	5.7%
4	%	1.9%	2.7%	2.2%
5	%	0.6%	2.1%	1.1%
More than 5	%	11.5%	17.7%	13.6%
I am staying on at my current employer	%	58.4%	22.5%	46.5%
Grand Total	%	100.0%	100.0%	100.0%

From Table 6 above it can be deduced that more postgraduates have secured a job while studying and therefore be staying on at their current employer. For a faculty breakdown of the question above,

refer to Figure 10 below (this figure excludes respondents that are staying on at their current employer), while Table 7 provides the breakdown more detail.

From Figure 10 below, it can be deduced that there are clear differences between respondents from different faculties in how many organisations were approach before securing a job. Note that Military Sciences and Theology was omitted from the graph due to small sample sizes after removing the respondents that will stay on at their current employer.

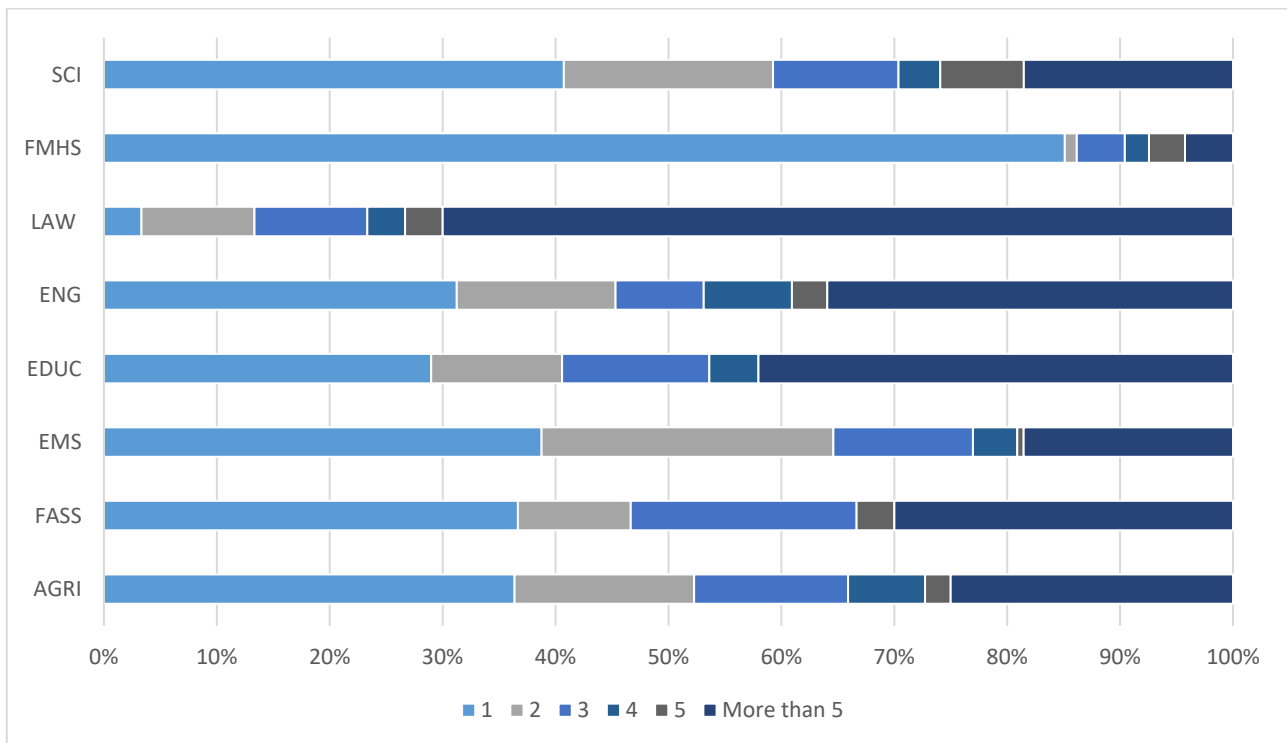


Figure 10: Organisations approached per faculty

Table 7: Faculty breakdown: How many organisations did you approach before you were offered a job?

	1	2	3	4	5	More than 5	Current Employer	Grand Total
AgriSciences	16	7	6	3	1	11	7	51
Arts And Social Sciences	11	3	6		1	9	50	80
Econ and Management Sciences	69	46	22	7	1	33	202	380
Education	20	8	9	3		29	40	109
Engineering	20	9	5	5	2	23	35	99
Law	1	3	3	1	1	21	11	41
Medicine And Health Sciences	80	1	4	2	3	4	94	188
Military Science		1				1	15	17
Science	11	5	3	1	2	5	12	39
Theology	2					1	4	7
Grand Total	230	83	58	22	11	137	470	1011

Table 8 below indicates the breakdown of the answer to the question “*What will your average monthly salary be?*” for postgraduate, undergraduate and total respondents. To make further sense of this question, a faculty breakdown for undergraduates and postgraduates follow in Figure 11 and Figure 12 below.

Table 8: What will your average monthly salary be?

		Postgraduate	Undergraduate	Grand Total
< R5 000	N	7	4	11
R5 000 - R10 000	N	43	42	85
R10 000 - R15 000	N	71	51	122
R15 000 - R20 000	N	94	63	157
R20 000 - R25 000	N	86	62	148
R25 000 - R30 000	N	79	29	108
> R30 000	N	297	83	380
Grand Total	N	677	334	1011
< R5 000	%	1.0%	1.2%	1.1%
R5 000 - R10 000	%	6.4%	12.6%	8.4%
R10 000 - R15 000	%	10.5%	15.3%	12.1%
R15 000 - R20 000	%	13.9%	18.9%	15.5%
R20 000 - R25 000	%	12.7%	18.6%	14.6%
R25 000 - R30 000	%	11.7%	8.7%	10.7%
> R30 000	%	43.9%	24.9%	37.6%
Grand Total	%	100.0%	100.0%	100.0%

From the table above it is clear that a larger portion of postgraduate students earn in the higher salary brackets (above R30 000 and R25 000 – R30 000 per month) compared to undergraduate students. From the figures below it is clear that this is also true on a faculty level.

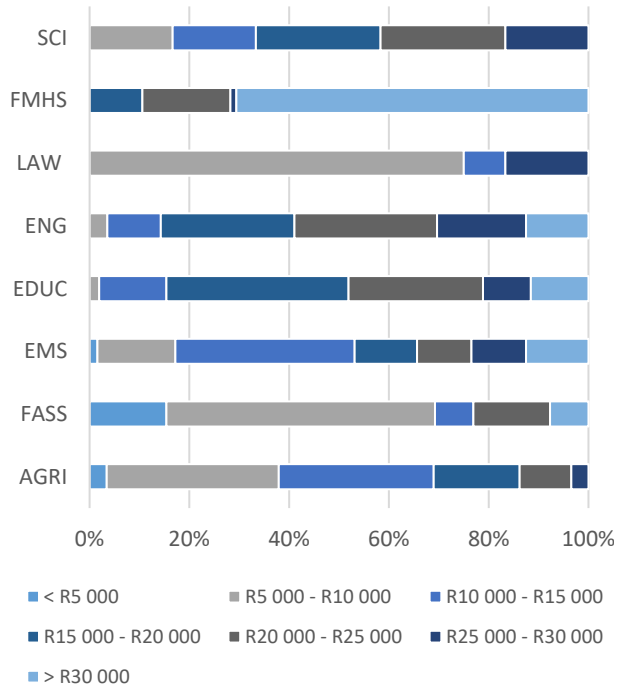


Figure 11: Undergraduate breakdown

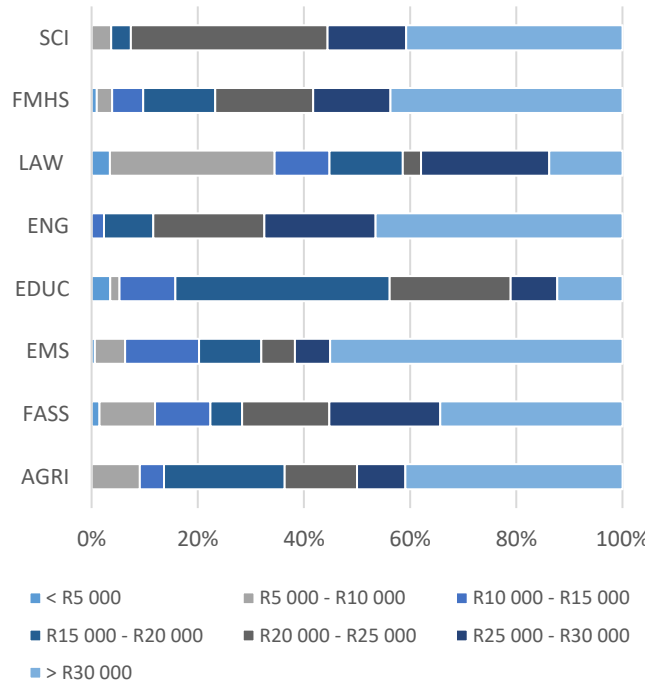


Figure 12: Postgraduate breakdown

A complete breakdown of this question by faculty and enrolment status (undergraduate or postgraduate) can be found in the annexure (Table 14).

The last work-related question was “Did you obtain any work experience while you were studying?”. Table 9 below depicts the breakdown of responses by postgraduate, undergraduate and total respondents.

Table 9: Did you obtain any work experience while you were studying?

	Postgraduate		Undergraduate		Total	
	Count	Percentage	Count	Percentage	Count	Percentage
No	289	22.58%	394	28.68%	683	25.73%
Yes	991	77.42%	980	71.32%	1971	74.27%
Grand Total	1280	100.00%	1374	100.00%	2654	100.00%

From the table above it is clear that 74.3% of graduates obtained work experience while they were studying. This figure is slightly higher for postgraduate students (77.4%).

3.4. Study-related questions

This section was answered by all participants (1042) that indicated that they will pursue further studies (either full-time or part-time) and are already accepted or will still be applying.

Table 10: At which institution are you going to or are you planning to study?

Institution	Count	Percentage
University of Stellenbosch	884	84.84%
Other	78	7.49%
University of Cape Town	26	2.50%
University of South Africa	20	1.92%
University of the Witwatersrand	8	0.77%
University of the Free State	5	0.48%
University of the Western Cape	4	0.38%
University of Pretoria	4	0.38%
University of Johannesburg	3	0.29%
North-West University	2	0.19%
Nelson Mandela University	2	0.19%
Central University of Technology	1	0.10%
Sefako Makgatho Health Sciences University	1	0.10%
University of Venda	1	0.10%
Walter Sisulu University	1	0.10%
Rhodes University	1	0.10%
Tshwane University of Technology	1	0.10%
Grand Total	1042	100.00%

The table above (Table 10) indicates the responses to the question “*At which institution are you going to or are you planning to study?*”. From this question it is clear that the majority (84.8%) of students will pursue further studies at Stellenbosch University. There were also 7.5% of students that indicate “Other”. These institutions include colleges in South Africa or other institutions abroad.

Table 11: Why did you decide to continue with your studies? (Choose the most important reason)

	Postgraduate		Undergraduate		Total	
	Count	%	Count	%	Count	%
To improve my future career progression	109	37.2%	359	47.9%	468	44.9%
To improve my chances of finding employment	37	12.6%	129	17.2%	166	15.9%
I would like to become an academic/lecturer	87	29.7%	53	7.1%	140	13.4%
Personal motivation	39	13.3%	88	11.7%	127	12.2%
I was advised to continue with further studies	5	1.7%	35	4.7%	40	3.8%
To change to a different career	10	3.4%	27	3.6%	37	3.6%
To increase my salary potential	3	1.0%	29	3.9%	32	3.1%
Other	3	1.0%	29	3.9%	32	3.1%
Grand Total	293	100.0%	749	100.0%	1042	100.0%

The question “*Why did you decide to continue with your studies? (Choose the most important reason)*” was asked in response to pursuing further studies. Based on the responses it is clear that most graduates decide to pursue further studies to improve their career progression (44.9%), improve their chances of finding employment (15.9%), to become an academic/lecturer (13.4%) or personal motivation (12.2%) as per Table 11. The table also provides a breakdown of postgraduate and undergraduate respondents.

3.5. UGCS activities participation

This section was answered by all participants (2654) that completed the survey and are aimed at the resources made available by the Unit for Graduat and Career Services. This section comprised of 12 activities that should be answered in the context “*Did you participate in any of the following UGCS activities (UGCS = Unit for Graduat Career Services) while you were studying?*”. Figure 13 below gives an overview of all participants’ responses. 1454 participants participated in at least one of the below activities. A breakdown of undergraduate and postgraduate students is available in the annexure in Figure 17 and Figure 18, respectively (please note that students that indicated they were studying part-time and already secured a job were not included in these two figures).

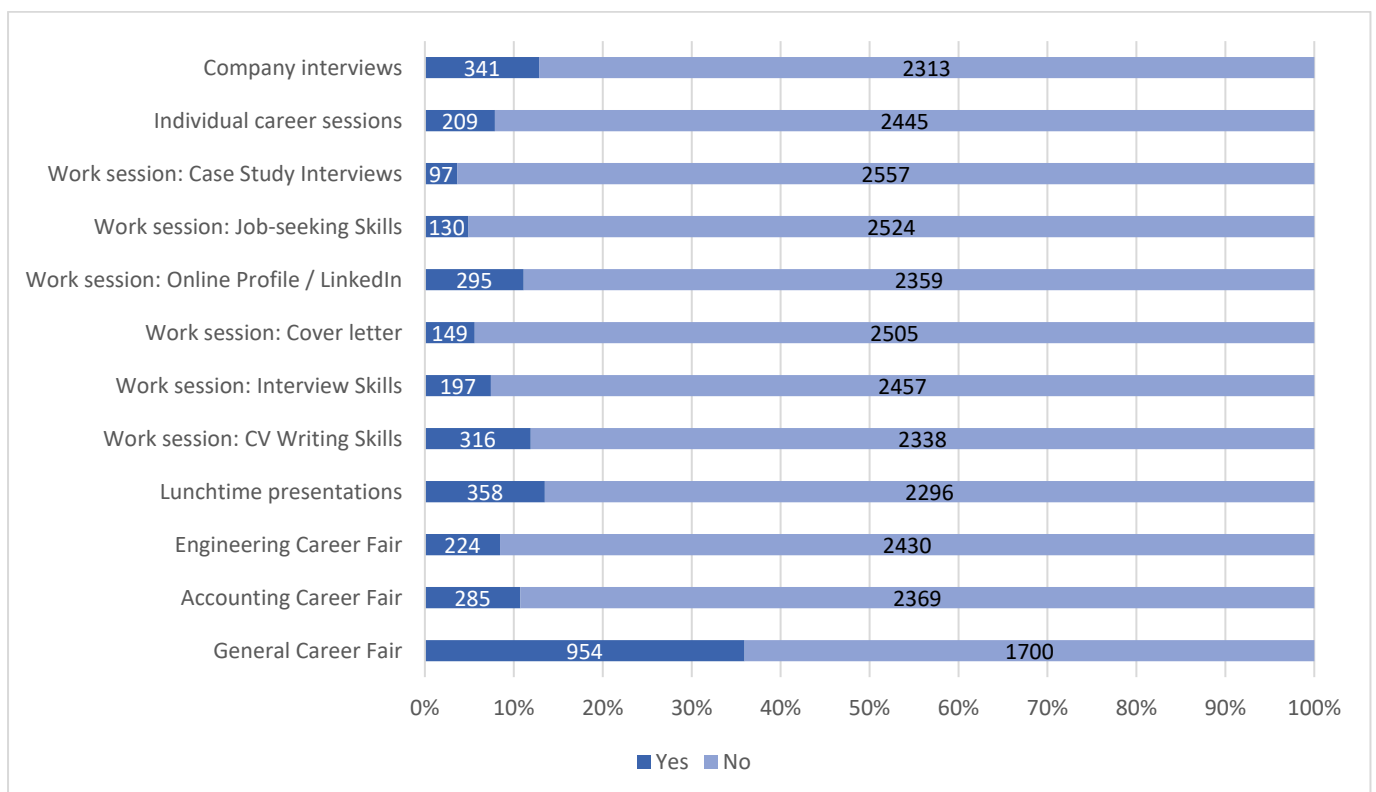


Figure 13: Did you participate in any of the following UGCS activities while you were studying?

To provide a clearer picture for the engineering and accounting fair participation, Figure 14 and Figure 15 below give feedback on these specific occasions by only the applicable students. For the Engineering Fair all participants in the engineering faculty were considered and for the Accounting Fair all participants that were in the programmes BAcc, BAcc (Hons), BAcc (LLB), BCom (Financial Accounting), BCom (Management Accounting), MAcc and Diploma in Public Accounting were considered. Both these participation rates are 68% for the targeted groups.

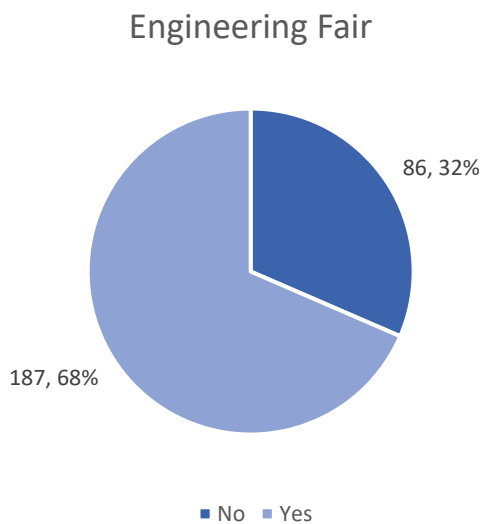


Figure 14: Engineering Fair

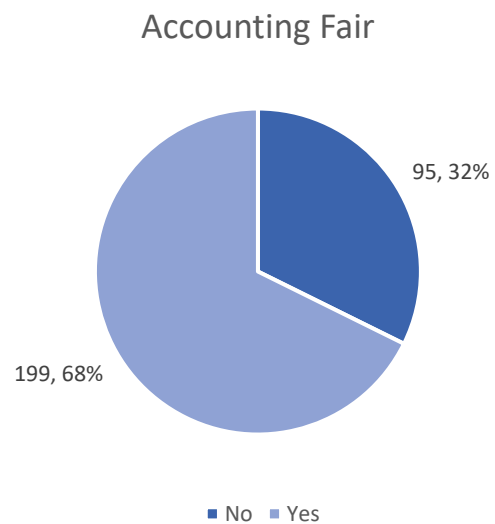


Figure 15: Accounting Fair

3.6. Co-curricular activities participation

This section was answered by all participants (2654) that completed the survey and is aimed at the co-curricular activities that graduates participated in while studying. This section comprised of 9 activities that was answered in the context “Did you participate in any of the following co-curricular activities?”. Figure 16 below gives an overview of all participants’ responses.

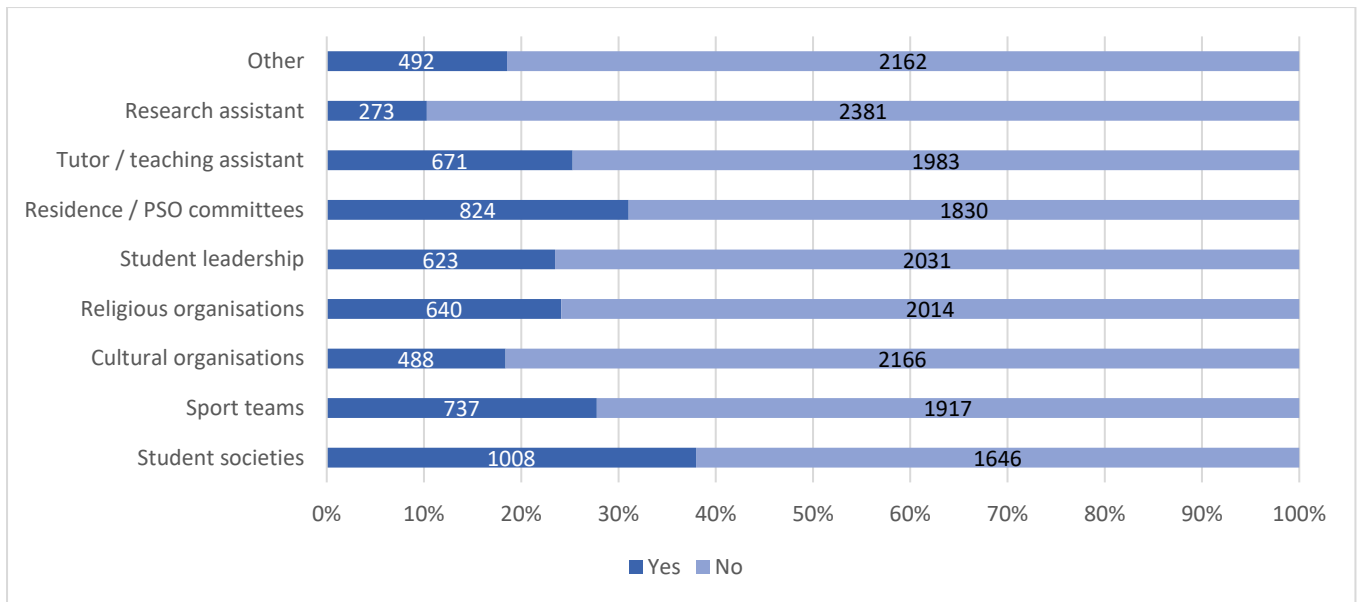


Figure 16: Did you participate in any of the following co-curricular activities?

4. List of Figures

Figure 1: Language distribution	4
Figure 2: Gender distribution.....	4
Figure 3: Population group distribution.....	4
Figure 4: How did you apply for your job?.....	7
Figure 5: What is the nature of your employment?	8
Figure 6: In which sector will you be working?.....	8
Figure 7: Where will you work?	9
Figure 8: In which province will you work?.....	9
Figure 9: In your opinion is the type of work related to your qualification?	10
Figure 10: Organisations approached per faculty	11
Figure 11: Undergraduate breakdown	13
Figure 12: Postgraduate breakdown.....	13
Figure 13: Did you participate in any of the following UGCS activities while you were studying?	15
Figure 14: Engineering Fair	16
Figure 15: Accounting Fair	16
Figure 16: Did you participate in any of the following co-curricular activities?	17

5. List of Tables

Table 1: Number of graduates in 2019	2
Table 2: Qualification type and graduation ceremony	3
Table 3: Faculty distribution.....	4
Table 4: Primary activity after graduation for PG and UG graduates.....	5
Table 5: PG and UG breakdown: How many organisations did you approach before you were offered a job?	10
Table 6: Faculty breakdown: How many organisations did you approach before you were offered a job?	11
Table 7: What will your average monthly salary be?.....	12
Table 8: Did you obtain any work experience while you were studying?.....	13
Table 9: At which institution are you going to or are you planning to study?	14
Table 10: Why did you decide to continue with your studies? (Choose the most important reason)	14
Table 11: How did you obtain your job?.....	20
Table 12: What is the nature of your employment?	21
Table 13: Starting salary by faculty and enrolment status	22

6. Annexure

Table 12: How did you obtain your job?

	Postgraduate	Undergraduate	Grand Total
I am staying on at my current employer			
Count	384	48	432
Percentage	56.7%	14.4%	42.7%
Job is part of compulsory internship/community year/bursary obligation			
Count	53	89	142
Percentage	7.8%	26.6%	14.0%
Networking with friends, family or acquaintances			
Count	56	51	107
Percentage	8.3%	15.3%	10.6%
Website of company or other electronic media			
Count	51	35	86
Percentage	7.5%	10.5%	8.5%
Other			
Count	33	19	52
Percentage	4.9%	5.7%	5.1%
Job is part of compulsory internship/community year/bursary obligation			
Count	19	29	48
Percentage	2.8%	8.7%	4.7%
Sent out CVs randomly			
Count	21	23	44
Percentage	3.1%	6.9%	4.4%
Newspaper ad			
Count	21	10	31
Percentage	3.1%	3.0%	3.1%
LinkedIn			
Count	16	12	28
Percentage	2.4%	3.6%	2.8%
Recruitment agencies			
Count	12	10	22
Percentage	1.8%	3.0%	2.2%
Maties Career Portal			
Count	4	4	8
Percentage	0.6%	1.2%	0.8%
Stellenbosch University's Graduate Recruitment Programme			
Count	4	3	7
Percentage	0.6%	0.9%	0.7%
Cold-calling (random calling)			
Count	3	1	4
Percentage	0.4%	0.3%	0.4%
Total Count	677	334	1011
Total Percentage	100.0%	100.0%	100.0%

Table 13: What is the nature of your employment?

	Postgraduate	Undergraduate	Grand Total
Agrisciences	22	29	51
Contract position for longer than 12 months	3	9	12
Contract position for shorter than 12 months	5	7	12
Other		1	1
Permanent work	14	12	26
Arts And Social Sciences	67	13	80
Contract position for longer than 12 months	7	8	15
Contract position for shorter than 12 months	7	2	9
Other	2	1	3
Permanent work	51	2	53
Econ and Management Sciences	316	64	380
Contract position for longer than 12 months	77	20	97
Contract position for shorter than 12 months	7	4	11
Other	7	2	9
Permanent work	225	38	263
Education	57	52	109
Contract position for longer than 12 months	11	12	23
Contract position for shorter than 12 months	7	10	17
Other	1		1
Permanent work	38	30	68
Engineering	43	56	99
Contract position for longer than 12 months	11	13	24
Contract position for shorter than 12 months	4	6	10
Other	1	2	3
Permanent work	27	35	62
Law	29	12	41
Contract position for longer than 12 months	17	9	26
Contract position for shorter than 12 months		1	1
Permanent work	12	2	14
Medicine And Health Sciences	103	85	188
Contract position for longer than 12 months	13	55	68
Contract position for shorter than 12 months	6	16	22
Other		8	8
Permanent work	84	6	90
Military Science	6	11	17
Contract position for longer than 12 months	2	7	9
Permanent work	4	4	8
Science	27	12	39
Contract position for longer than 12 months	6	4	10
Contract position for shorter than 12 months	4	1	5
Permanent work	17	7	24
Theology	7		7

Contract position for longer than 12 months	1		1
Permanent work	6		6
Grand Total	677	334	1011

Table 14: Starting salary by faculty and enrolment status

Faculty	Salary	Postgraduate	Undergraduate	Grand Total
Agrisciences	< R5 000		1	1
	R5 000 - R10 000	2	10	12
	R10 000 - R15 000	1	9	10
	R15 000 - R20 000	5	5	10
	R20 000 - R25 000	3	3	6
	R25 000 - R30 000	2	1	3
	> R30 000	9		9
Agrisciences Total		22	29	51
Arts And Social Sciences	< R5 000	1	2	3
	R5 000 - R10 000	7	7	14
	R10 000 - R15 000	7	1	8
	R15 000 - R20 000	4		4
	R20 000 - R25 000	11	2	13
	R25 000 - R30 000	14		14
	> R30 000	23	1	24
Arts And Social Sciences Total		67	13	80
Econ and Management Sciences	< R5 000	2	1	3
	R5 000 - R10 000	18	10	28
	R10 000 - R15 000	44	23	67
	R15 000 - R20 000	37	8	45
	R20 000 - R25 000	20	7	27
	R25 000 - R30 000	21	7	28
	> R30 000	174	8	182
Econ and Management Sciences Total		316	64	380
Education	< R5 000	2		2
	R5 000 - R10 000	1	1	2
	R10 000 - R15 000	6	7	13
	R15 000 - R20 000	23	19	42
	R20 000 - R25 000	13	14	27
	R25 000 - R30 000	5	5	10
	> R30 000	7	6	13
Education Total		57	52	109
Engineering	R5 000 - R10 000		2	2
	R10 000 - R15 000	1	6	7
	R15 000 - R20 000	4	15	19
	R20 000 - R25 000	9	16	25
	R25 000 - R30 000	9	10	19

	> R30 000	20	7	27
Engineering Total		43	56	99
Law	< R5 000	1		1
	R5 000 - R10 000	9	9	18
	R10 000 - R15 000	3	1	4
	R15 000 - R20 000	4		4
	R20 000 - R25 000	1		1
	R25 000 - R30 000	7	2	9
	> R30 000	4		4
Law Total		29	12	41
Medicine And Health Sciences	< R5 000	1		1
	R5 000 - R10 000	3		3
	R10 000 - R15 000	6		6
	R15 000 - R20 000	14	9	23
	R20 000 - R25 000	19	15	34
	R25 000 - R30 000	15	1	16
	> R30 000	45	60	105
Medicine And Health Sciences Total		103	85	188
Military Science	R5 000 - R10 000		1	1
	R10 000 - R15 000	1	2	3
	R15 000 - R20 000	1	4	5
	R20 000 - R25 000		2	2
	R25 000 - R30 000	1	1	2
	> R30 000	3	1	4
Military Science Total		6	11	17
Science	R5 000 - R10 000	1	2	3
	R10 000 - R15 000		2	2
	R15 000 - R20 000	1	3	4
	R20 000 - R25 000	10	3	13
	R25 000 - R30 000	4	2	6
	> R30 000	11		11
Science Total		27	12	39
Theology	R5 000 - R10 000	2		2
	R10 000 - R15 000	2		2
	R15 000 - R20 000	1		1
	R25 000 - R30 000	1		1
	> R30 000	1		1
Theology Total		7		7
Grand Total		677	334	1011

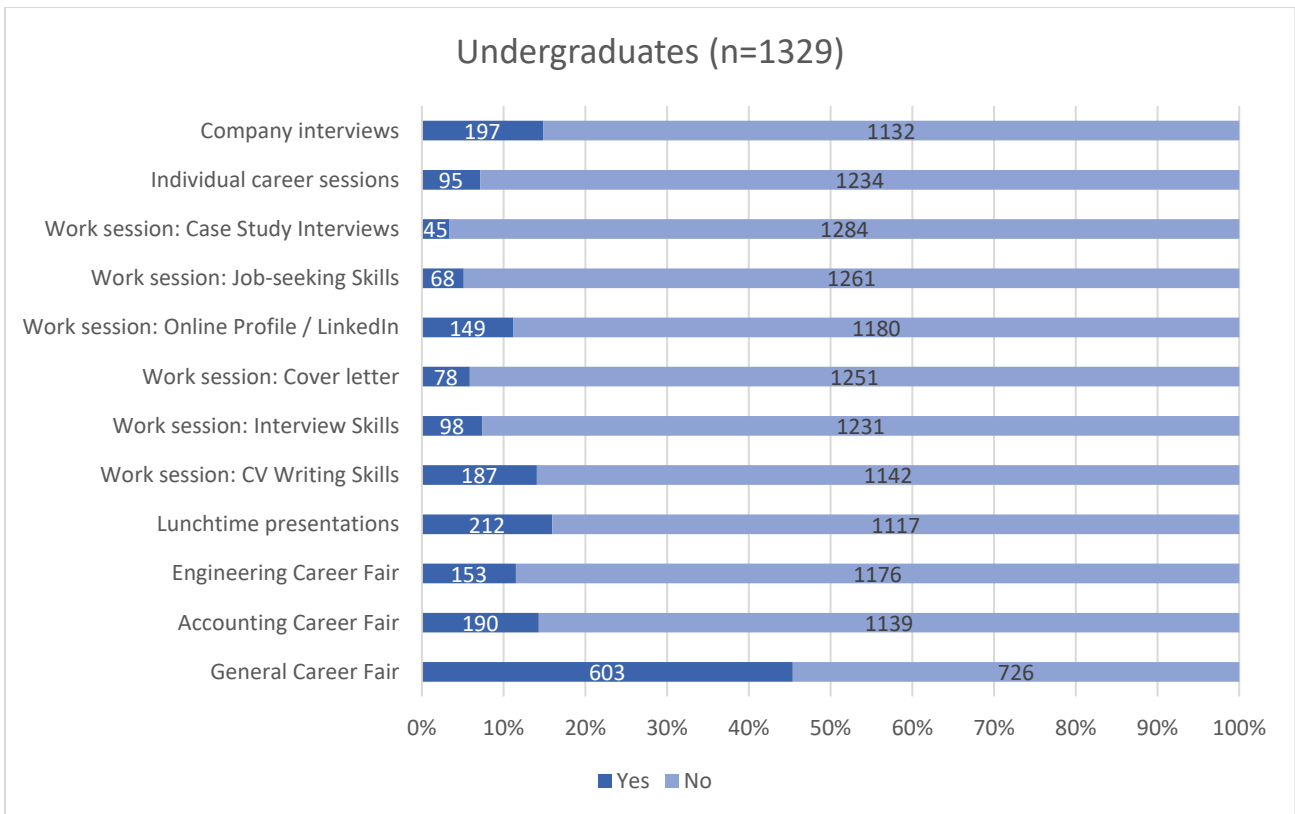


Figure 17: Did you participate in any of the following UGCS activities while you were studying? (UG's)

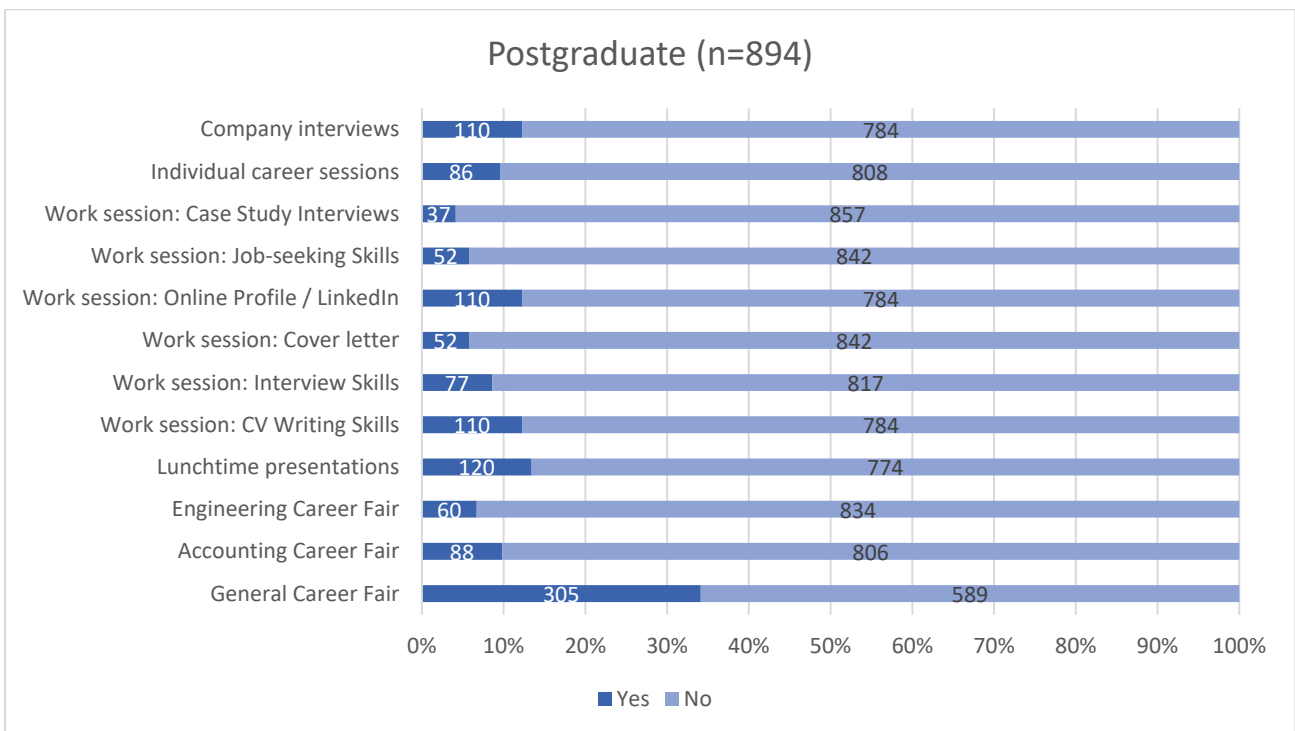


Figure 18: Did you participate in any of the following UGCS activities while you were studying? (PG's)